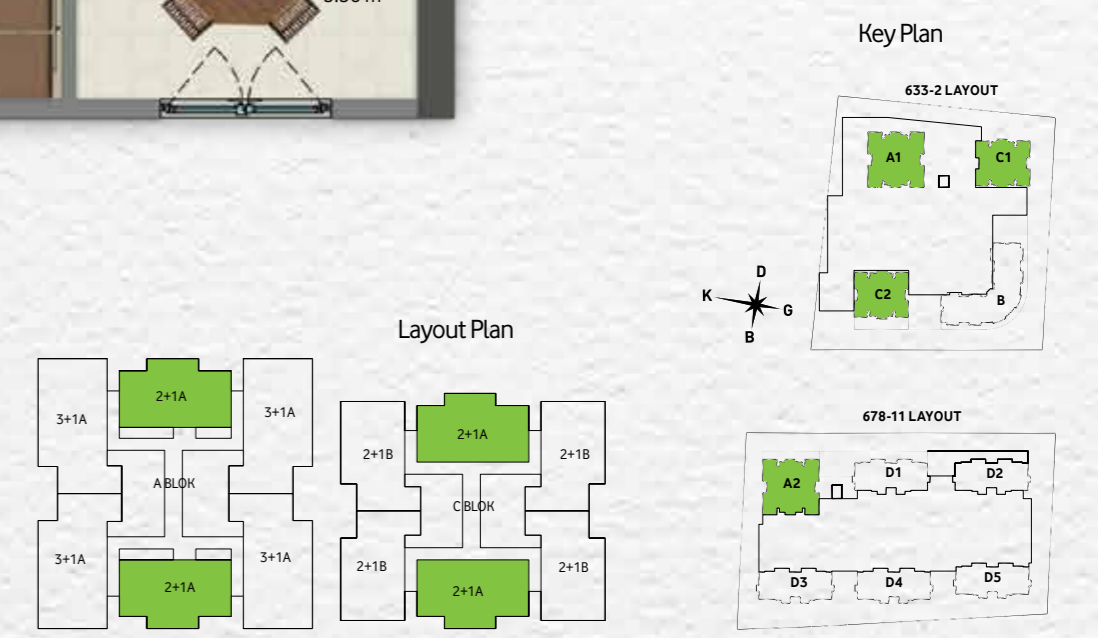


FLOOR PLANS

2+1-A A1-A2-C1-C2 Block | Normal Floor



Net Area Subjected to Sales : 84,43 m²
 Gross Area Subjected to Sales : 127,84 m² - 128,15 m²
 : 127,10 m² - 124,95 m²

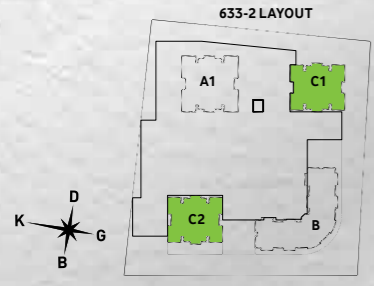


2+1-B

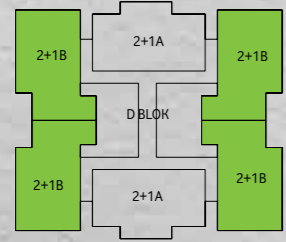
C1-C2 Block | Normal Floor



Key Plan



Layout Plan



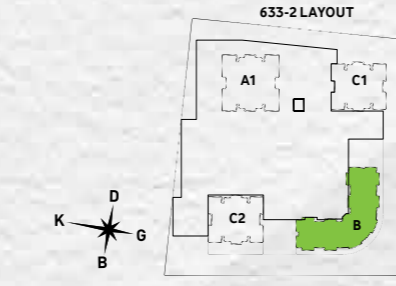
Net Area Subjected to Sales : 85,67 m²
 Gross Area Subjected to Sales : 126,45 m² - 128,72 m²

2+1-C

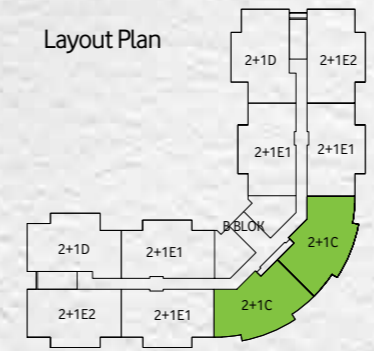
B Block | Normal Floor



Key Plan



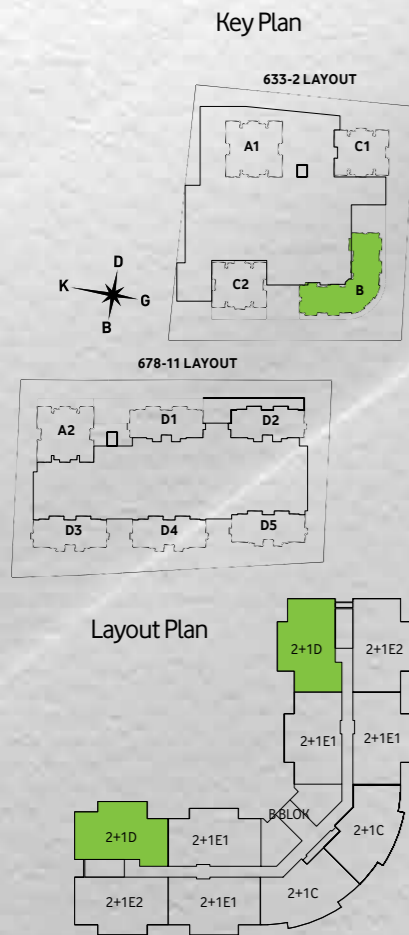
Layout Plan



Net Area Subjected to Sales : 86,65 m² - 86,84 m²
 Gross Area Subjected to Sales : 115,39 m² - 115,57 m²

2+1-D

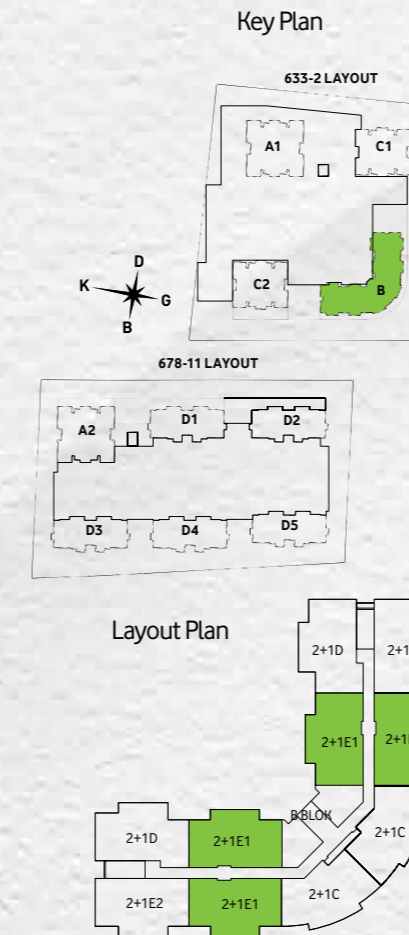
B Block | Normal Floor



Net Area Subjected to Sales : 86,52 m²
 Gross Area Subjected to Sales : 117,61 m²

2+1-E1

B Block | Normal Floor



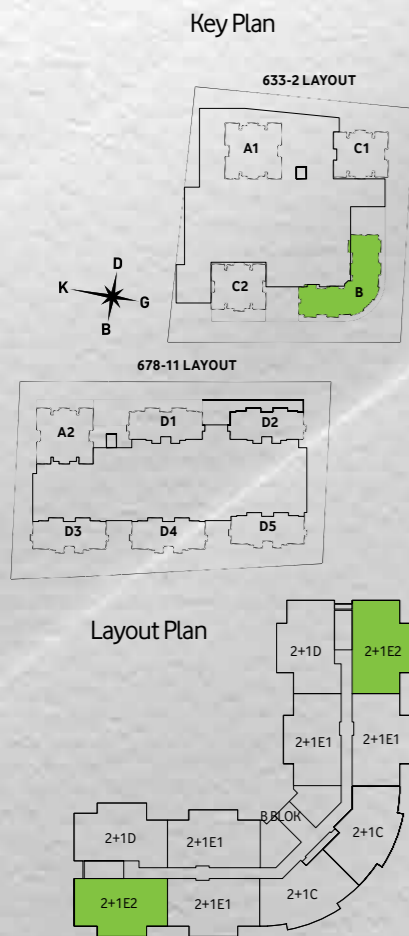
Net Area Subjected to Sales : 86,04 m² - 86,32 m²
 Gross Area Subjected to Sales : 114,45 m² - 115,66 m²

2+1-E2

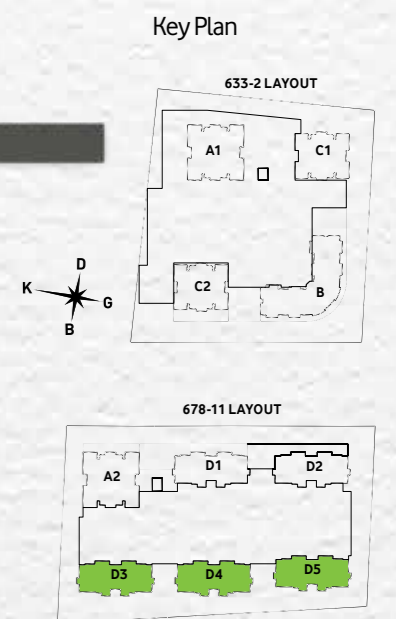
B Block | Normal Floor

2+1-F

D3-D4-D5 Block | 1st Floor



Net Area Subjected to Sales : 86,34 m²
 Gross Area Subjected to Sales : 117,15 m²



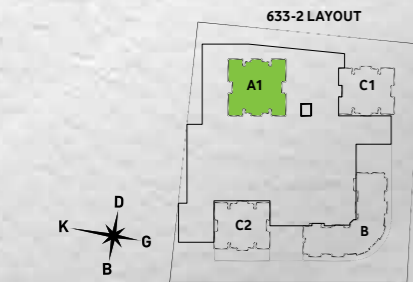
Net Area Subjected to Sales : 101,82 m²
 Gross Area Subjected to Sales : 136,28 m² - 136,95 m²

3+1-A

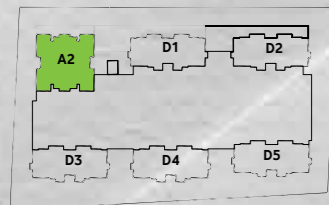
A1-A2 Block | Normal Floor



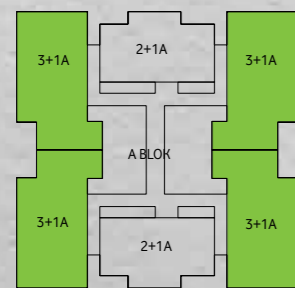
Key Plan



678-11 LAYOUT



Layout Plan



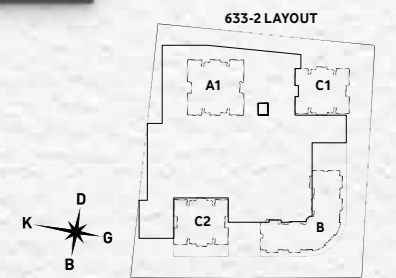
Net Area Subjected to Sales : 111,81 m²
 Gross Area Subjected to Sales : 168,21 m² - 168,61 m²

3+1-C

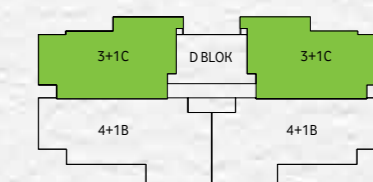
D1-D2-D3-D4-D5 Block | Normal Floor



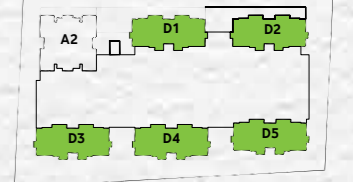
Key Plan



Layout Plan



678-11 LAYOUT



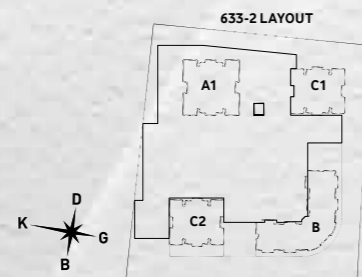
Net Area Subjected to Sales : 124,87 m²
 Gross Area Subjected to Sales : 161,87 m² - 168,27 m²

4+1-A

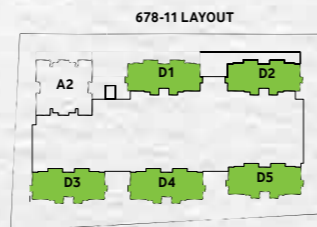
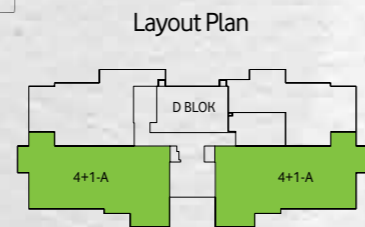
D1-D2-D3-D4-D5 | Ground Floor



Key Plan



Layout Plan



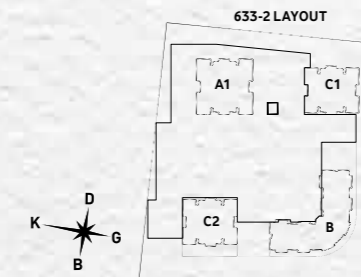
Net Area Subjected to Sales : 142,02 m²
 Net Area Subjected to Sales + Open Balcony : 147,78 m²
 Gross Area Subjected to Sales : 192,11 m² - 202,97 m²

4+1-B

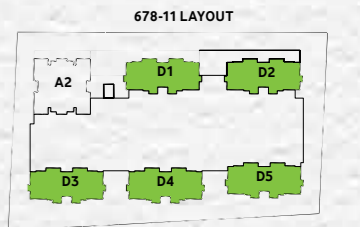
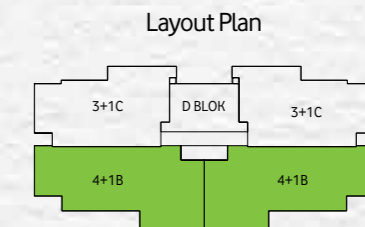
D1-D2-D3-D4-D5 Block | Normal Floor



Key Plan



Layout Plan



Net Area Subjected to Sales : 144,99 m²
 Net Area Subjected to Sales + Open Balcony : 155,02 m²
 Gross Area Subjected to Sales : 200,27 m² - 208,19 m²