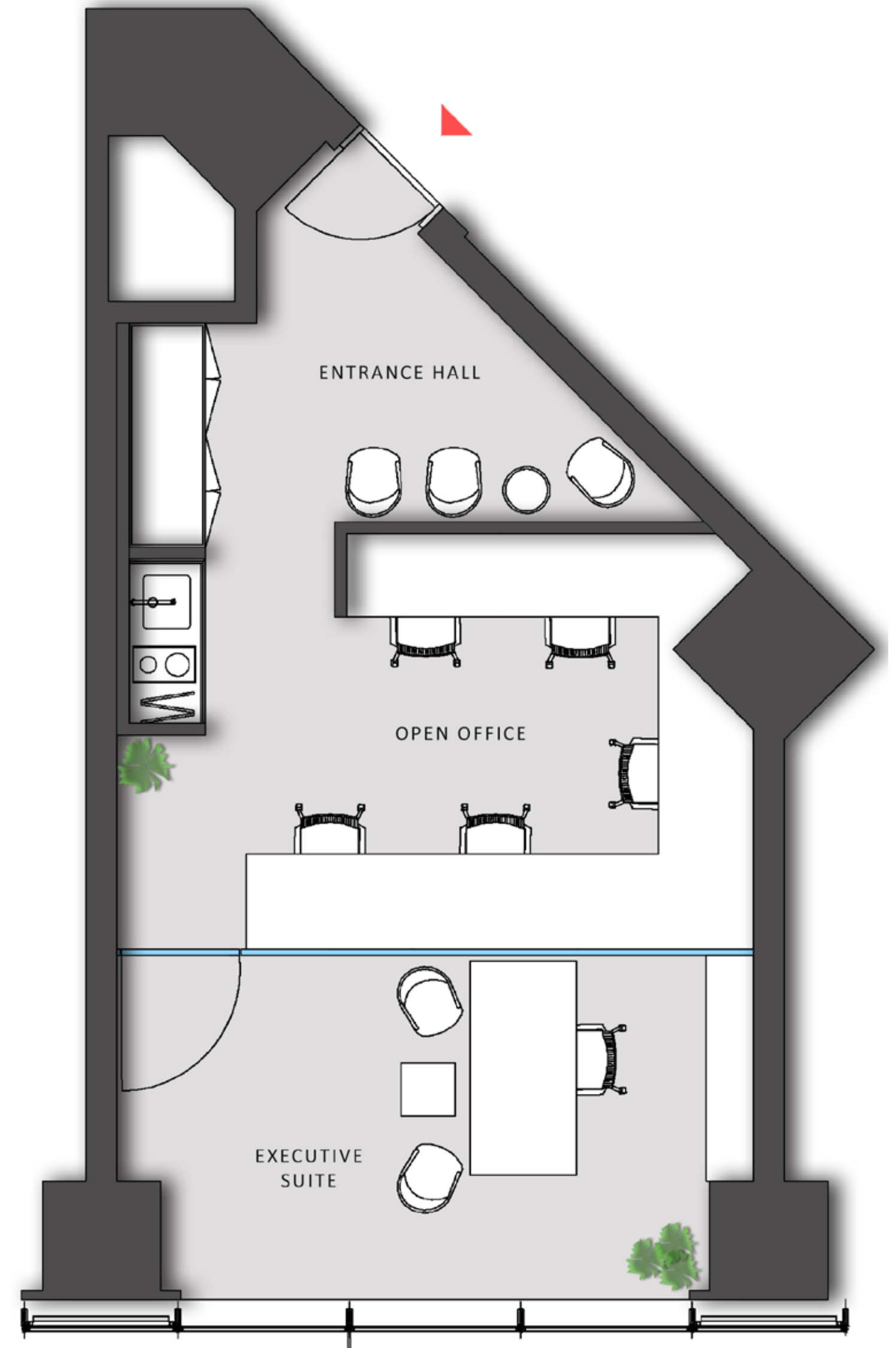




Nuroi Tower  
Office Plan



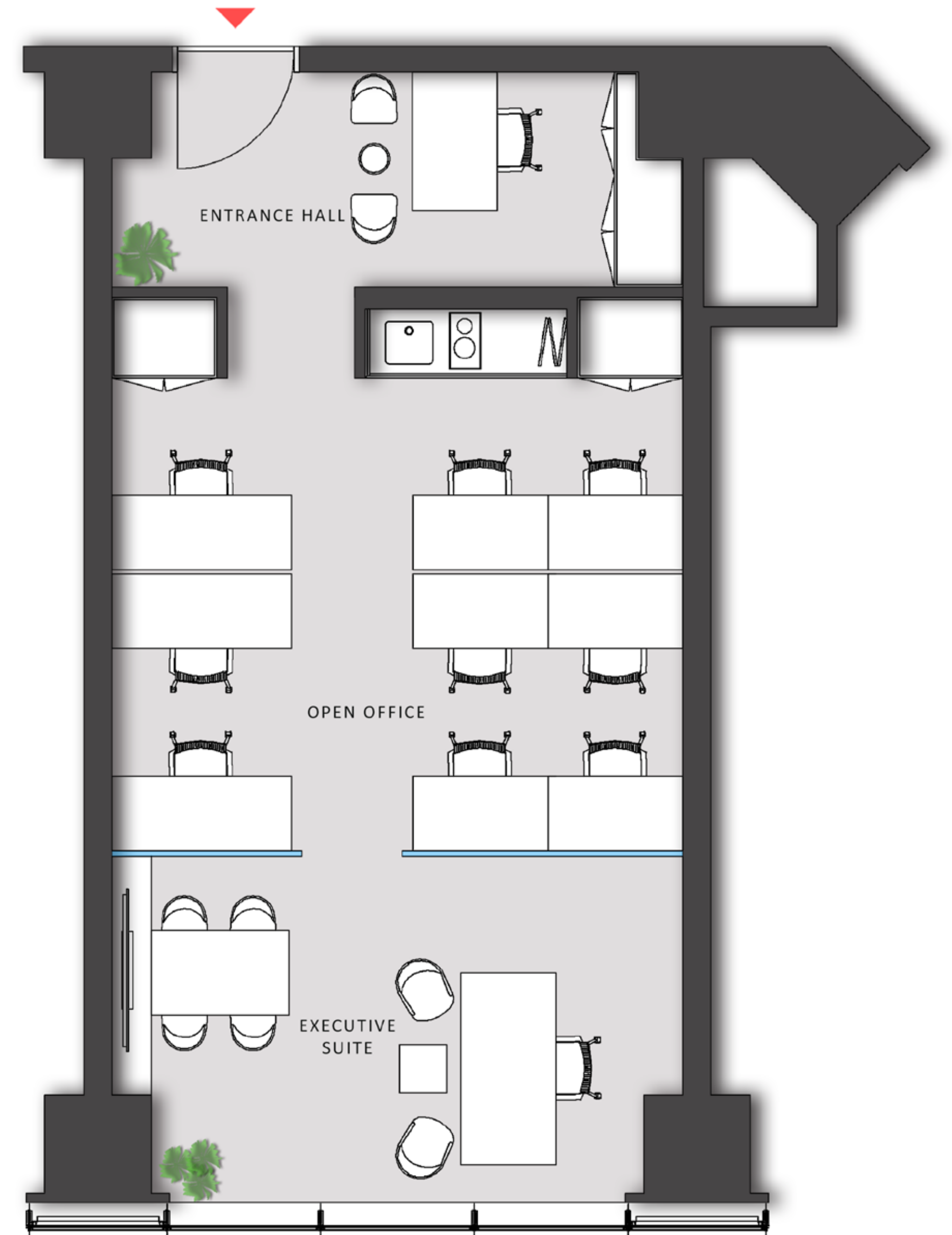
**B-06**  
 Net: 41.76 m<sup>2</sup>  
 Gross: 73.10 m<sup>2</sup>



**Net:** "Net" area refers to the clear area calculated with deduction for 2-cm plaster margin, inclusive of floor garden -if any- in a condominium unit and exclusive of columns, shafts, and outer walls of the same condominium unit.  
**Gross:** "Gross Floor Area" refers to the sum of the net area of a condominium unit and columns, walls and floor garden areas contained in it as well as its share of lifts, utility spaces, hallway, emergency stairs and common areas in the hallway.



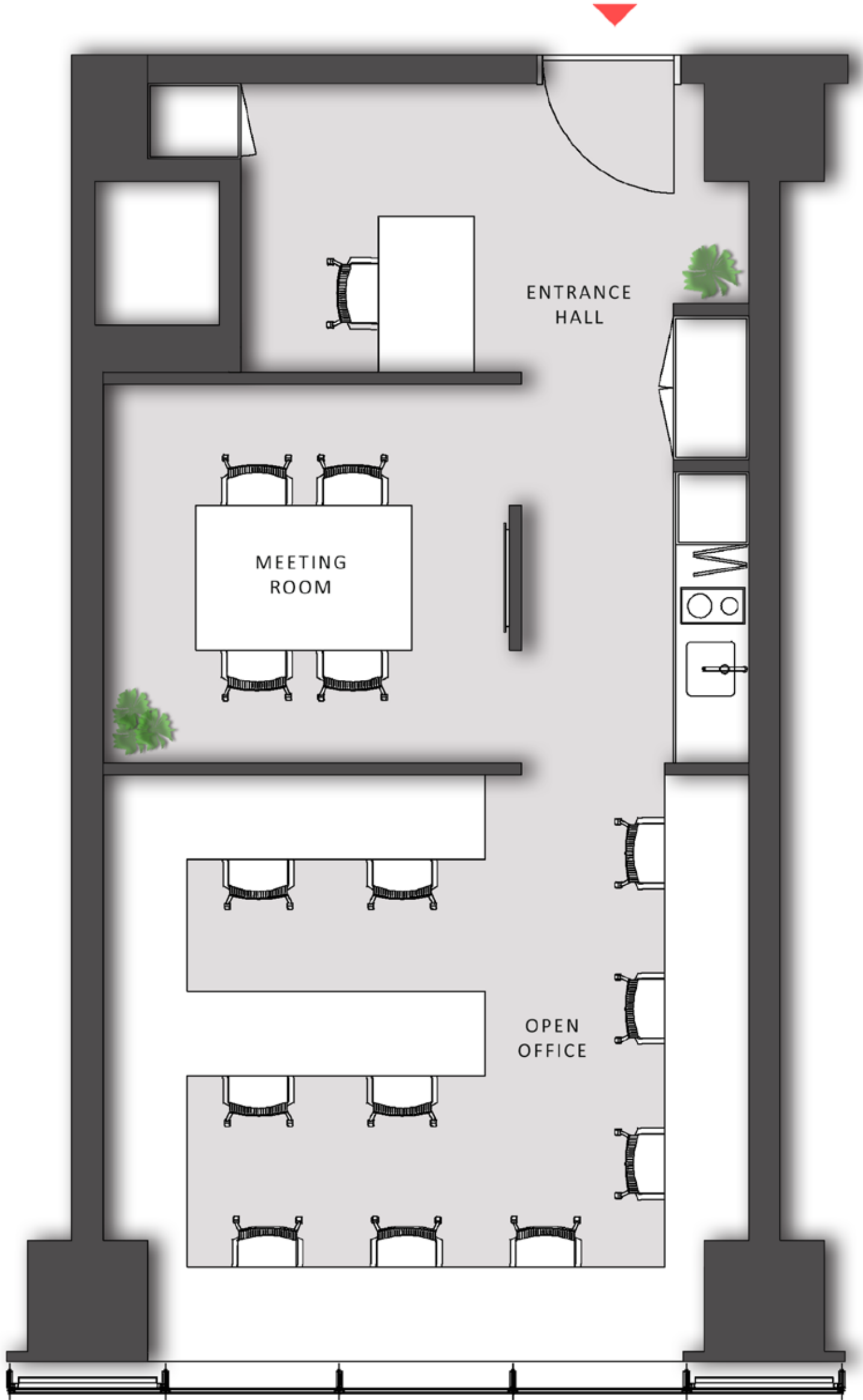
**B-07**  
 Net: 54.72 m<sup>2</sup>  
 Gross: 94.36 m<sup>2</sup>



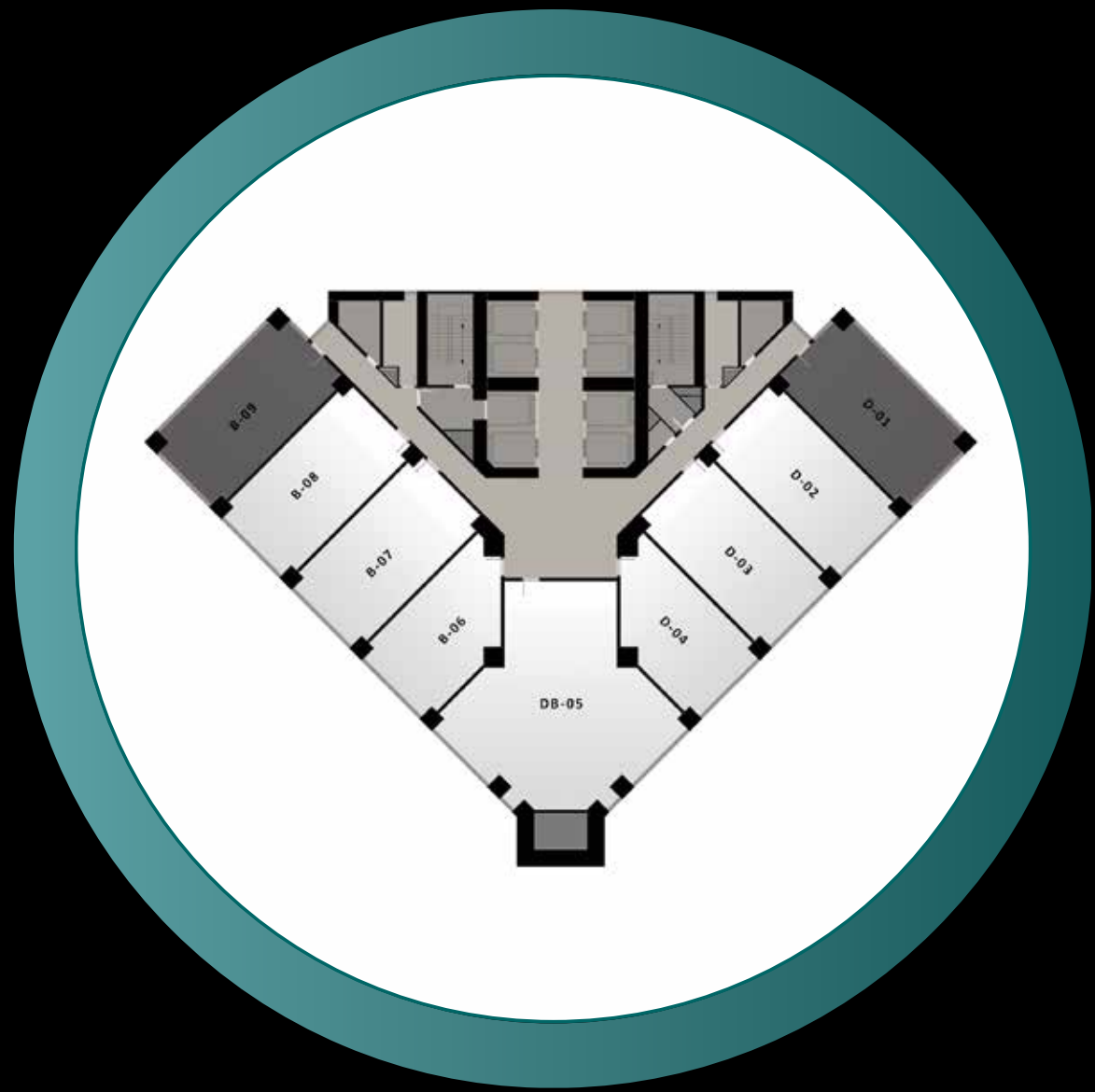
**Net:** "Net" area refers to the clear area calculated with deduction for 2-cm plaster margin, inclusive of floor garden -if any- in a condominium unit and exclusive of columns, shafts, and outer walls of the same condominium unit.  
**Gross:** "Gross Floor Area" refers to the sum of the net area of a condominium unit and columns, walls and floor garden areas contained in it as well as its share of lifts, utility spaces, hallway, emergency stairs and common areas in the hallway.



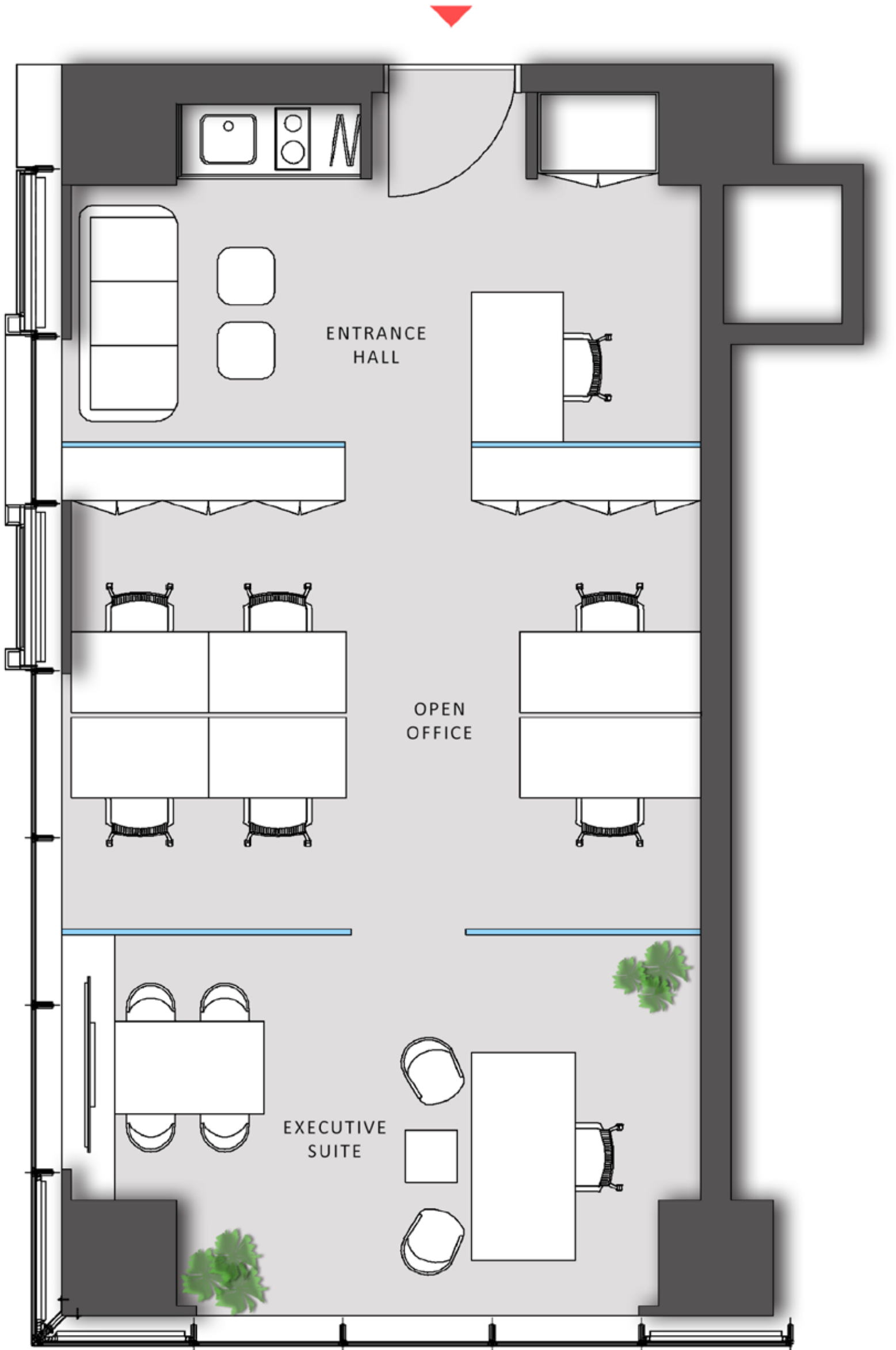
**B-08**  
 Net: 52.86 m<sup>2</sup>  
 Gross: 92.06 m<sup>2</sup>



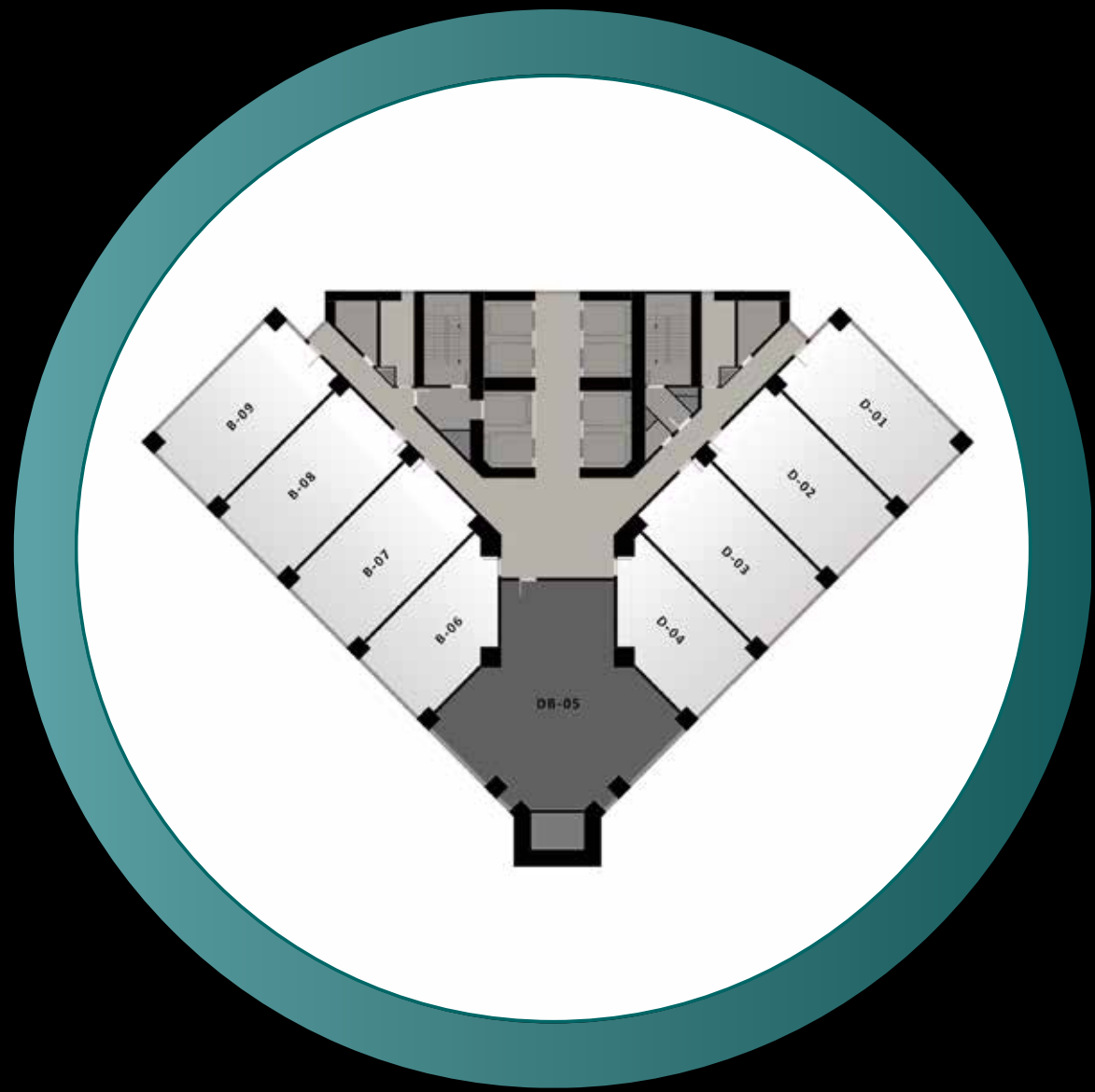
**Net:** "Net" area refers to the clear area calculated with deduction for 2-cm plaster margin, inclusive of floor garden -if any- in a condominium unit and exclusive of columns, shafts, and outer walls of the same condominium unit.  
**Gross:** "Gross Floor Area" refers to the sum of the net area of a condominium unit and columns, walls and floor garden areas contained in it as well as its share of lifts, utility spaces, hallway, emergency stairs and common areas in the hallway.



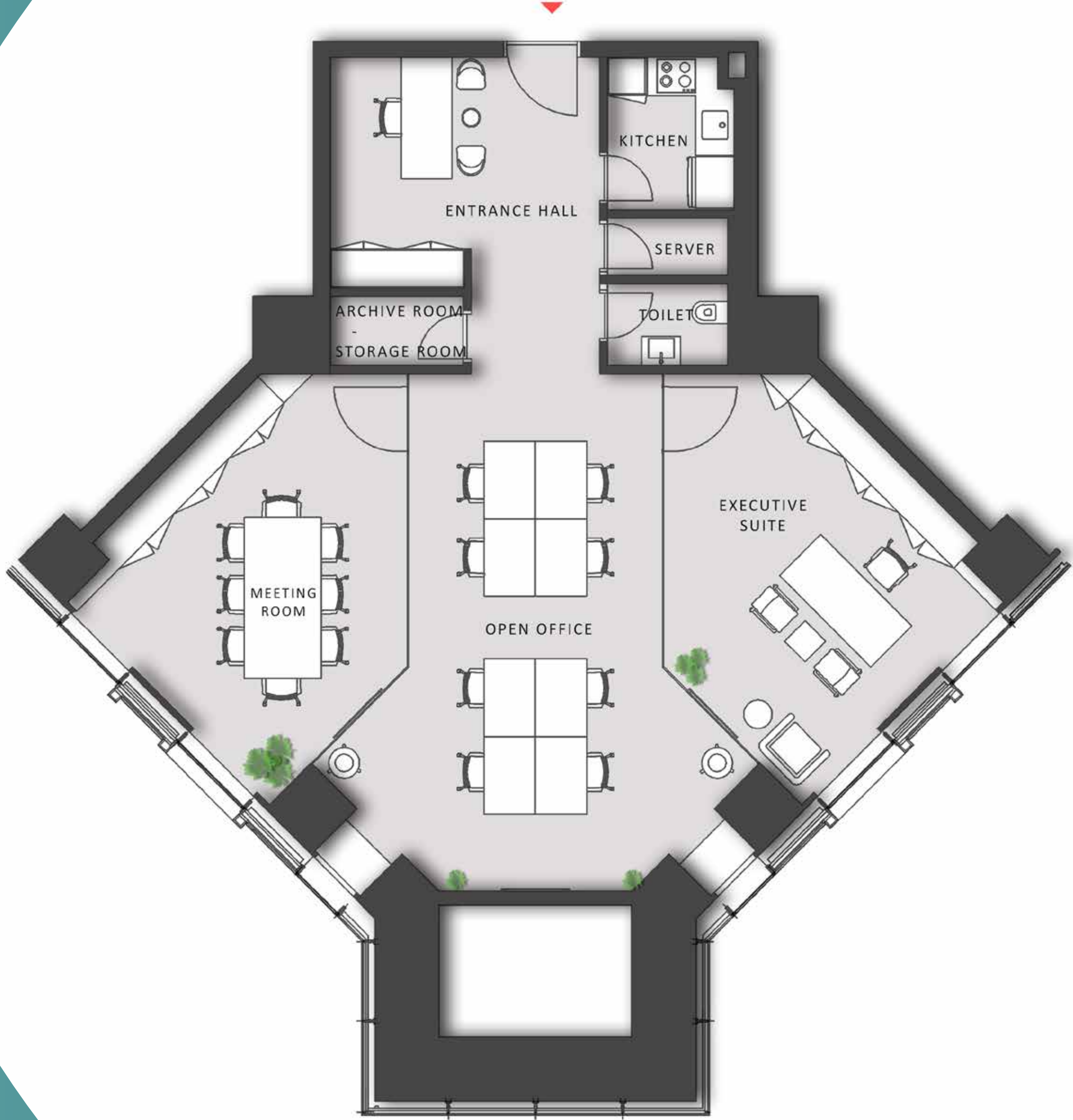
**B-09**  
 Net: 55.77 m<sup>2</sup>  
 Gross: 93.77 m<sup>2</sup>



**Net:** "Net" area refers to the clear area calculated with deduction for 2-cm plaster margin, inclusive of floor garden -if any- in a condominium unit and exclusive of columns, shafts, and outer walls of the same condominium unit.  
**Gross:** "Gross Floor Area" refers to the sum of the net area of a condominium unit and columns, walls and floor garden areas contained in it as well as its share of lifts, utility spaces, hallway, emergency stairs and common areas in the hallway.



**DB-05**  
 Net: 114.00 m<sup>2</sup>  
 Gross: 193.03 m<sup>2</sup>



**Net:** "Net" area refers to the clear area calculated with deduction for 2-cm plaster margin, inclusive of floor garden -if any- in a condominium unit and exclusive of columns, shafts, and outer walls of the same condominium unit.  
**Gross:** "Gross Floor Area" refers to the sum of the net area of a condominium unit and columns, walls and floor garden areas contained in it as well as its share of lifts, utility spaces, hallway, emergency stairs and common areas in the hallway.