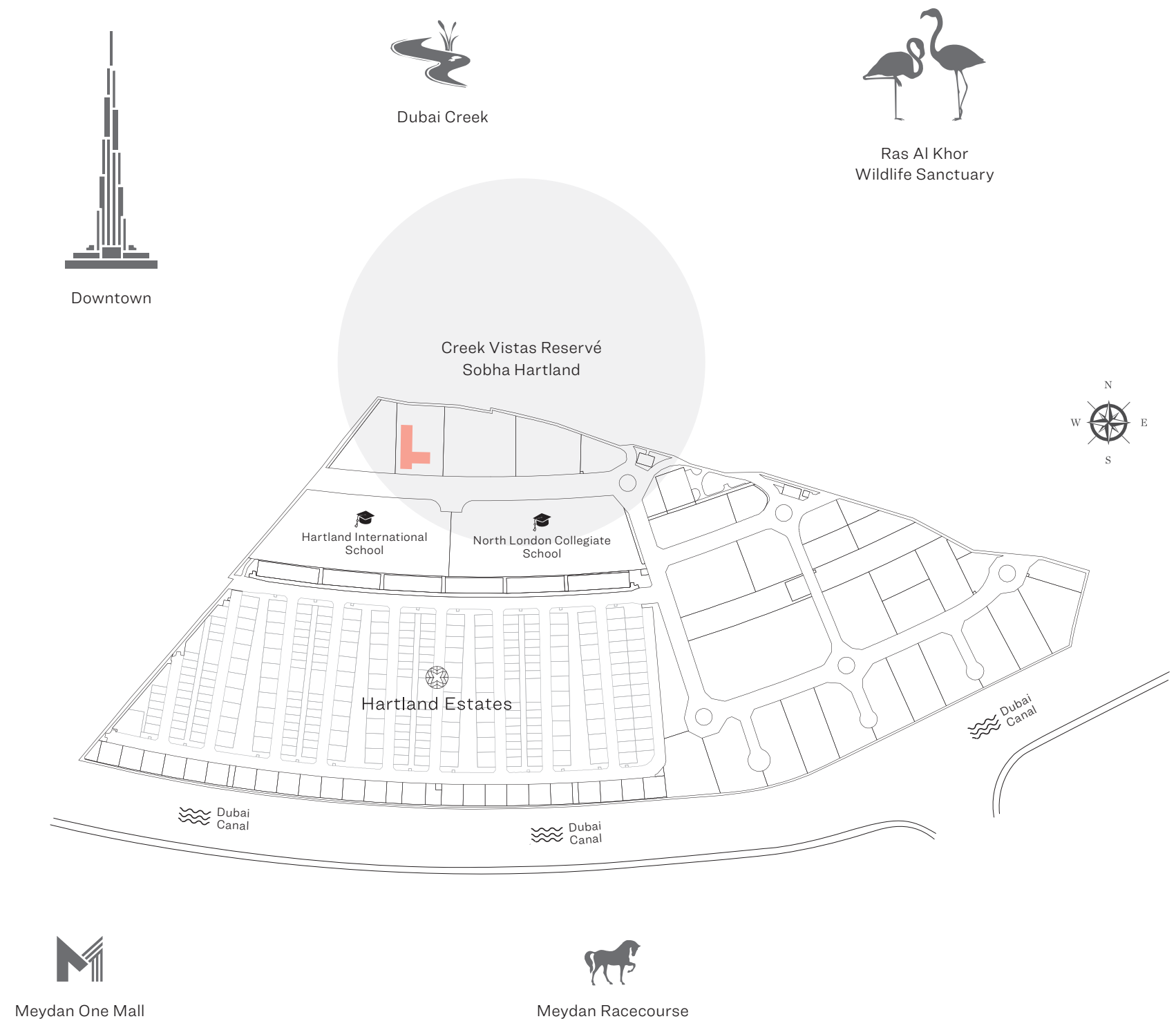







PLANS

MASTER PLAN



APARTMENT FEATURES

-   
 Variety of unit plans
-   
 Impeccable interiors
-   
 Undercover car parking
-   
 Choice of balcony in units
-   
 Bedroom wardrobe in all units

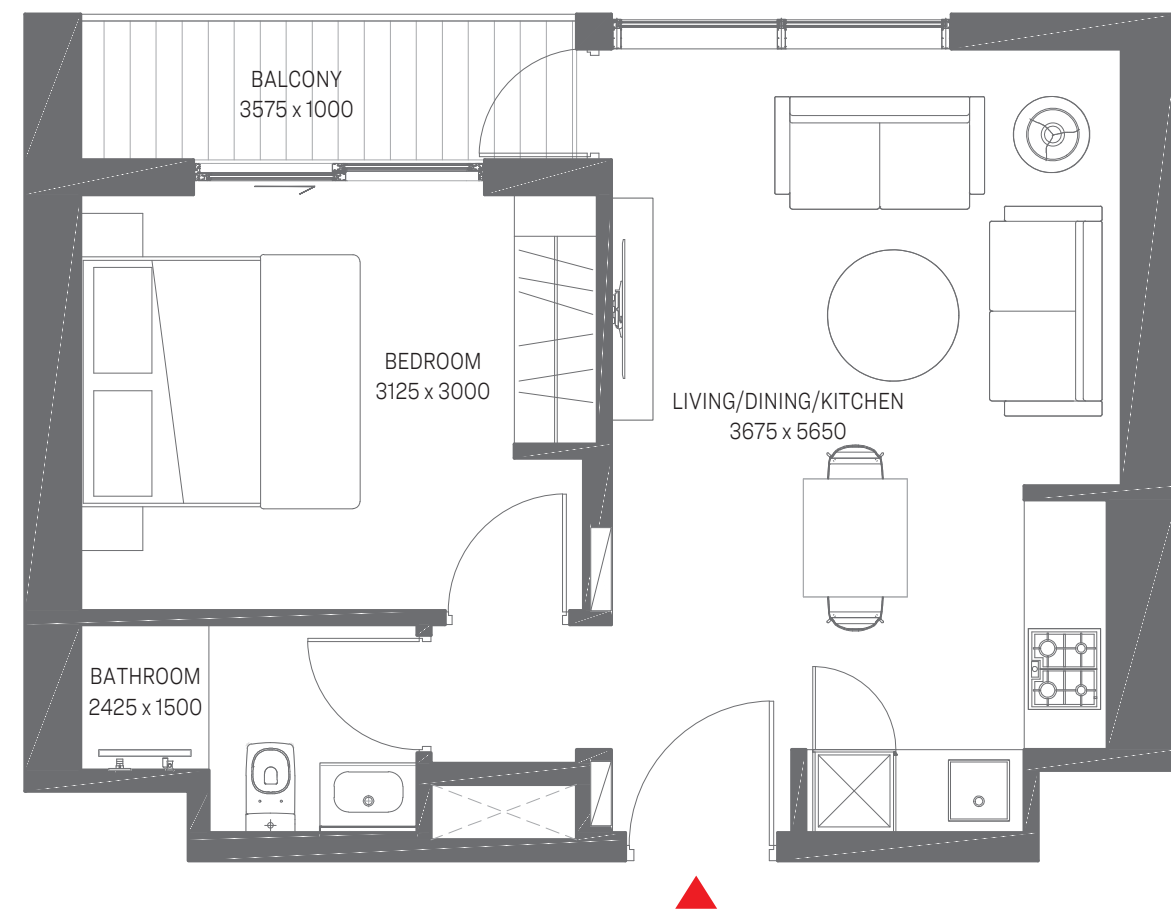
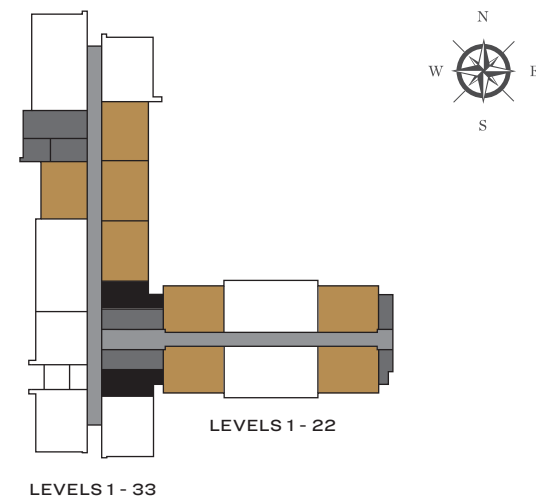
UNIT PLAN

- 1 BEDROOM - TYPE A
- 1 BEDROOM - TYPE B
- 1 BEDROOM - TYPE C
- 1 BEDROOM - TYPE D
- 2 BEDROOM - TYPE A
- 2 BEDROOM - TYPE B



1 BEDROOM - OPTIMA

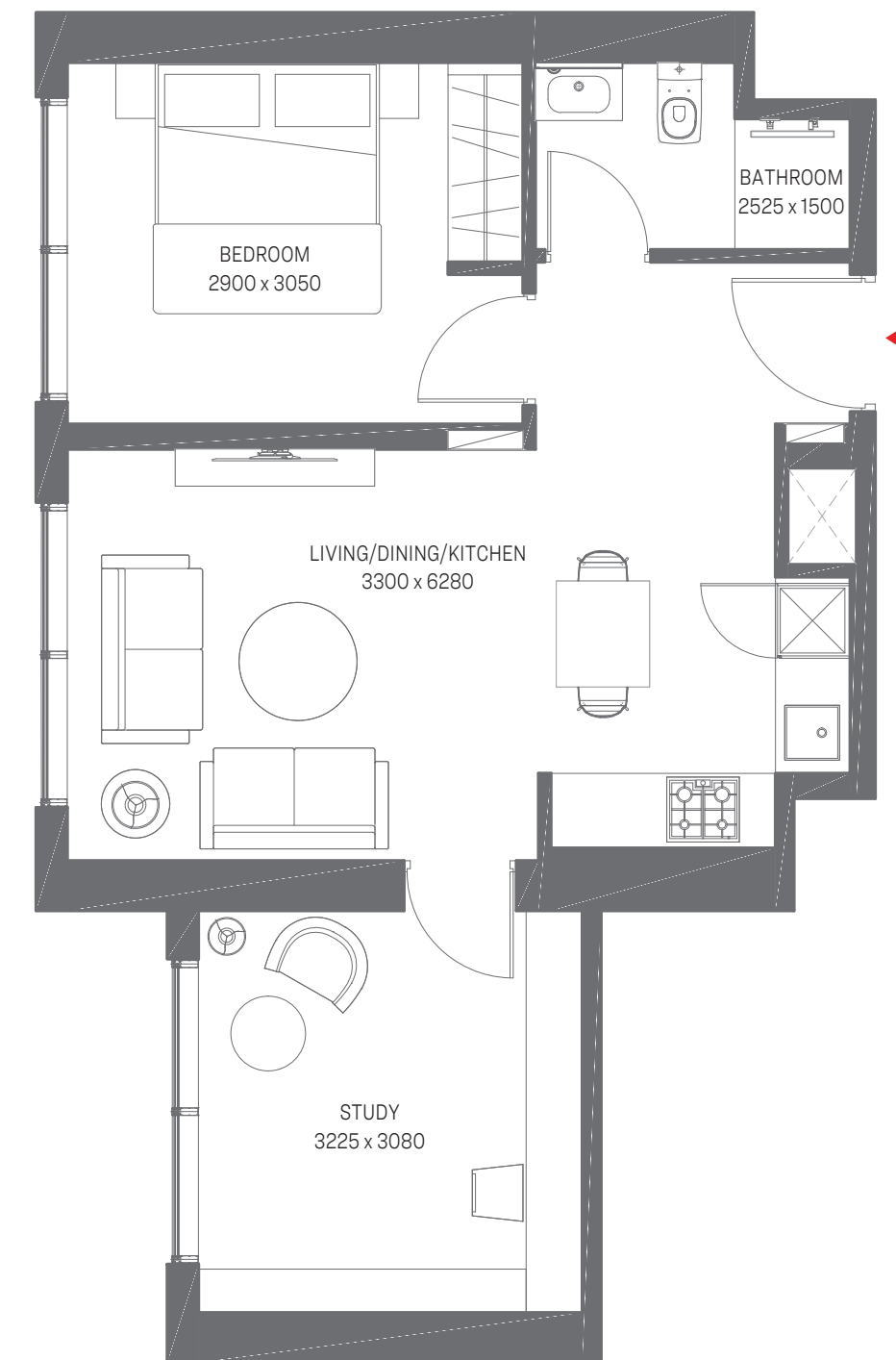
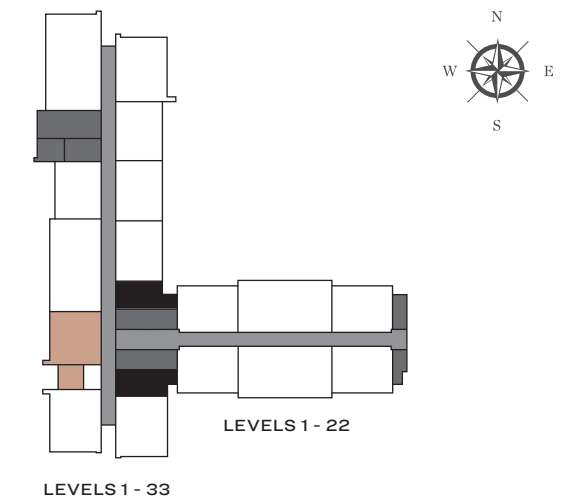
Suite Area - 439.06 Sq.Ft.  
 Balcony Area - 49.30 Sq.Ft.  
 Net Saleable Area - 488.36 Sq.Ft.



Disclaimer: 1. All dimensions are in metric, measured to wall finishes. 2. All materials, dimensions & drawings are approximate. 3. Information is subject to change without notice, at developer's absolute discretion. 4. Actual area may vary from the stated area. 5. Drawing are not to scale. 6. All images used are for illustrative purpose only and do not represent the actual size, features, specifications, fittings and furnishings. 7. The developer reserves the right to make revisions/ alterations, at its absolute discretion, without any liability whatsoever.

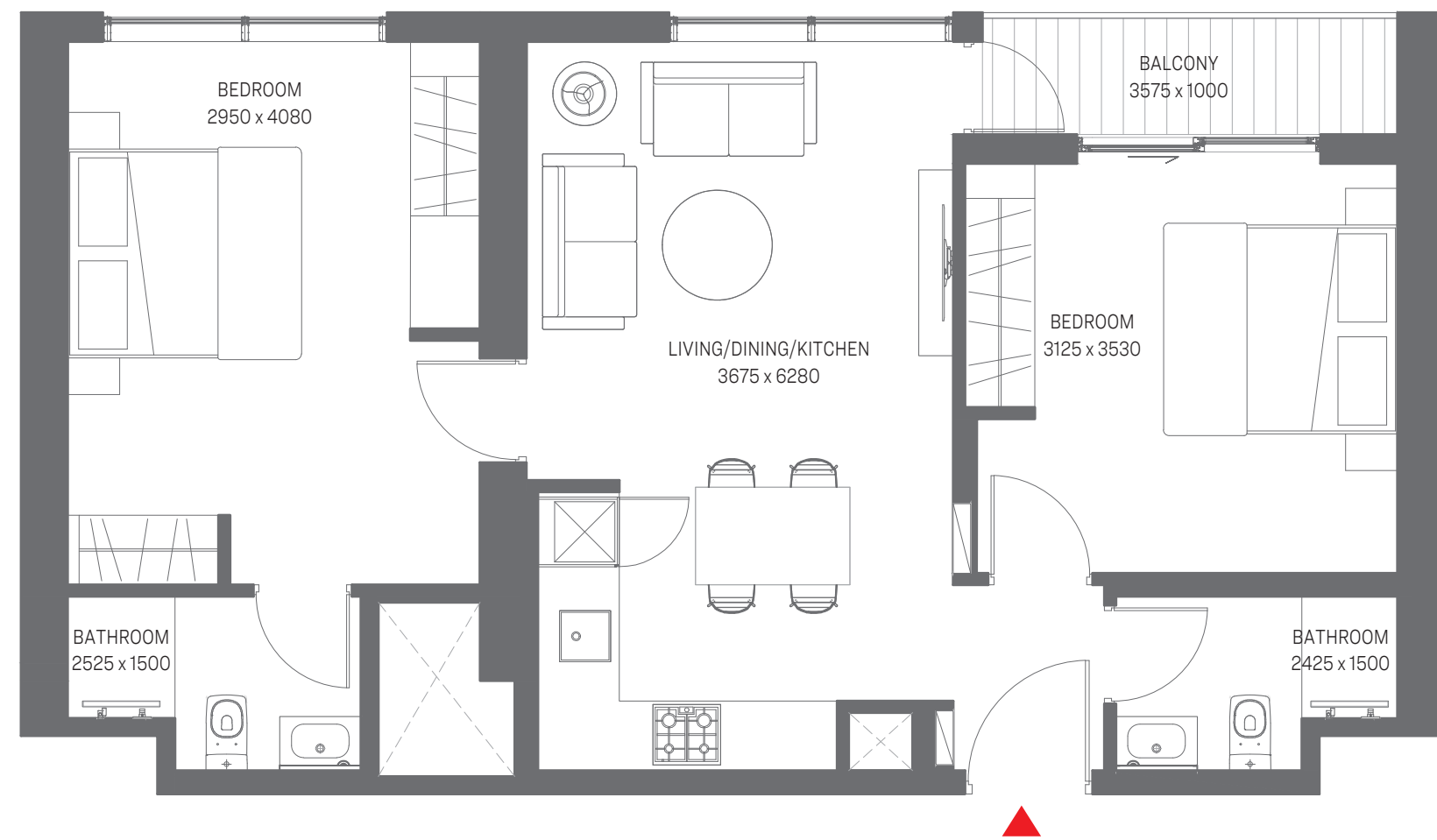
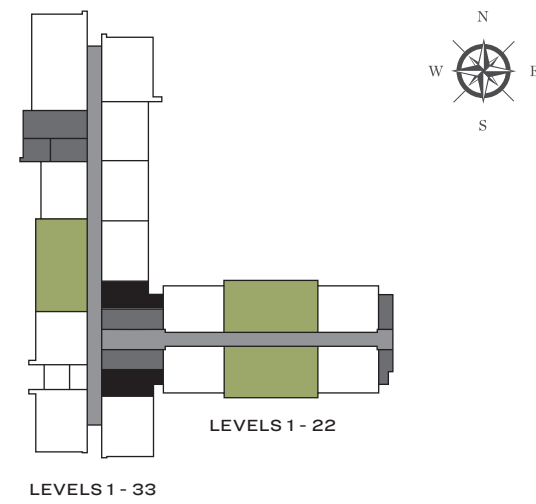
1 BEDROOM - PRIMA

Suite Area - 584.16 Sq.Ft.  
 Balcony Area - 584.16 Sq.Ft.



2 BEDROOM - OPTIMA

Suite Area - 746.69 Sq.Ft.  
 Balcony Area - 49.30 Sq.Ft.  
 Net Saleable Area - 795.99 Sq.Ft.



2 BEDROOM APARTMENT

TYPE B (corner units with two balconies)

Suite Area - 730.01 Sq Ft  
 Balcony Area - 168.99 Sq Ft  
 Net Saleable Area - 899 Sq Ft

