

HEIGHTS
DAİRE PLANLARI
UNIT PLANS



İSTANBUL

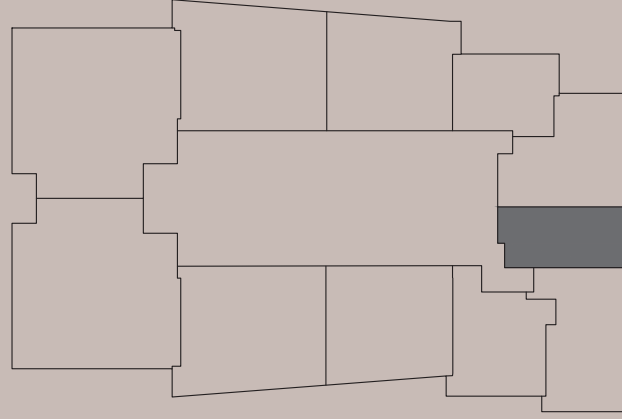




HEIGHTS



EMAAR
SQUARE



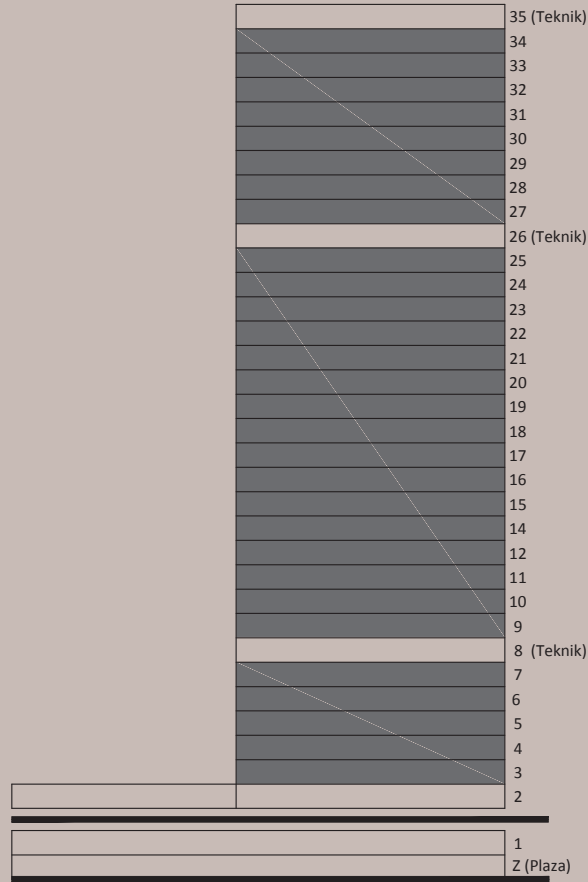
TİP 1 / TYPE 1

1. Giriş holü / Entry: A: 5.30 m²
2. Salon / Living room: A: 10.92 m²
3. Mutfak / Kitchen: A: 9.88 m²
4. Banyo / Bathroom: A: 4.71 m²
5. Yatak odası / Bedroom: A: 10.18 m²
6. Çamaşırılık / W.D: A: 0.76 m²

Net alan / Net area: 41.75 m²

Brüt alan / Gross area: 59.98 m²

KULE 1

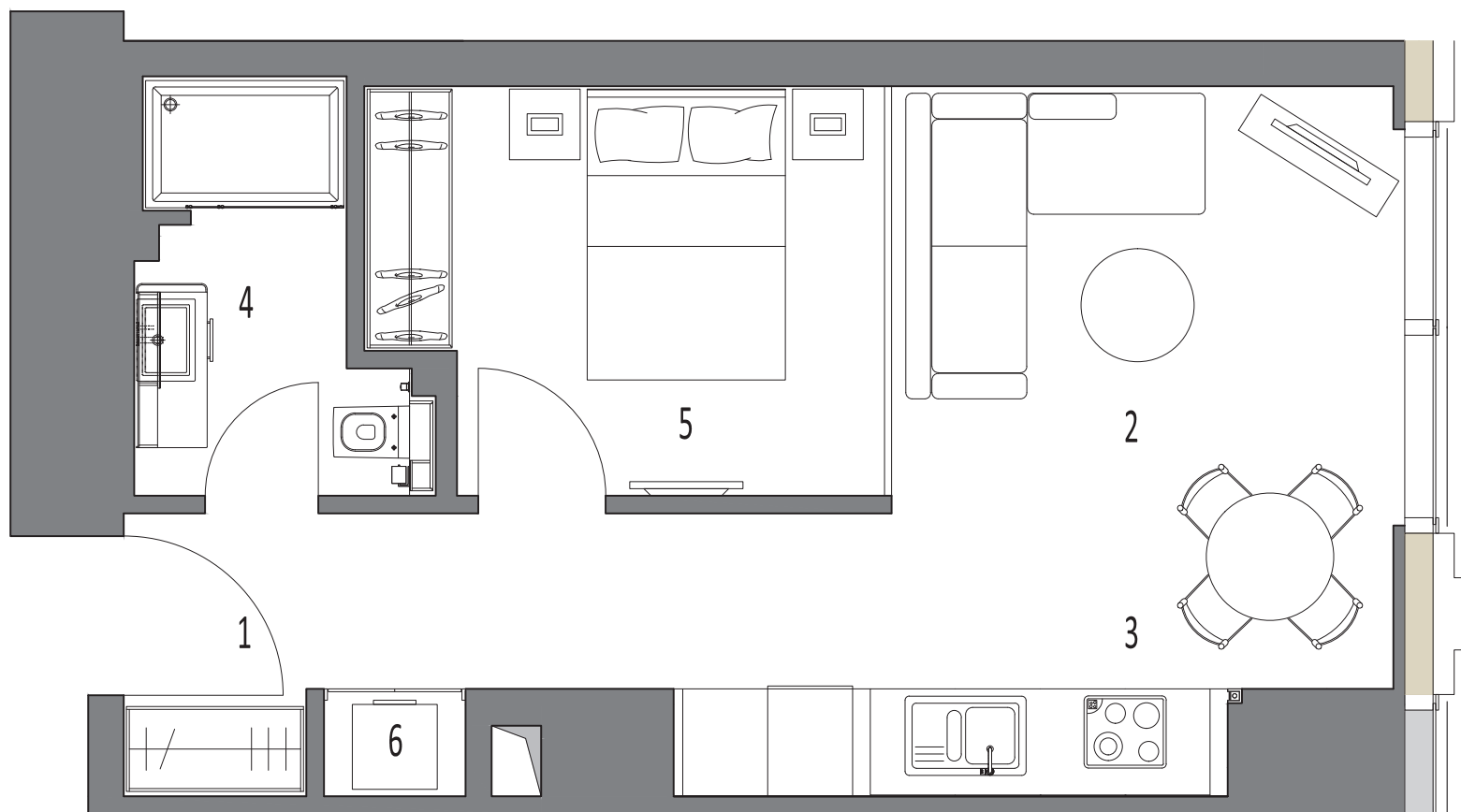


Örnek planlar dairenin projede bulunduğu blok ve kata göre alt yapıdan kaynaklanan farklılıklar gösterebilir. Emaar, projenin uygulanması sırasında teknik açıdan gerekli gördüğü değişiklikleri yapma hakkına sahiptir.
The sample layouts may differ according to the floor or block infrastructures where the circle is placed. Emaar is within right to do any changes or adjustments to the layout, if any arise due to technical necessities in the implementation of the project.

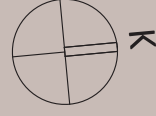
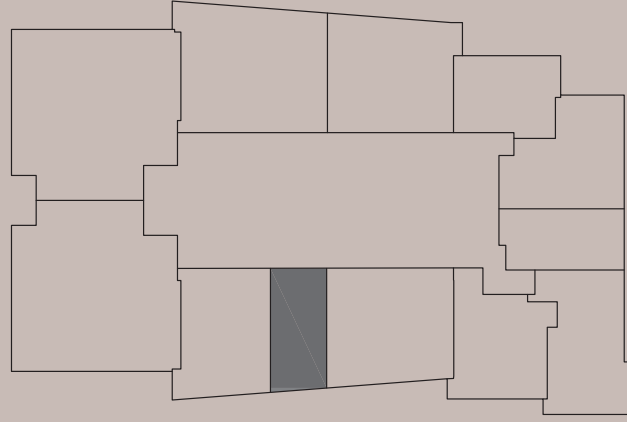


HEIGHTS

1+1 / 59.98 m²



EMAAR
SQUARE



TİP 1-A / TYPE 1-A

1. Giriş holü / Entry: A: 3.91 m²
2. Salon / Living room: A: 15.77 m²
3. Mutfak / Kitchen: A: 9.12 m²
4. Banyo / Bathroom: A: 4.17m²
5. Çamaşırılık / W.D: A: 0.76 m²

Net alan / Net area: 33.73 m²

Brüt alan / Gross area: 50.85 m²

KULE 1

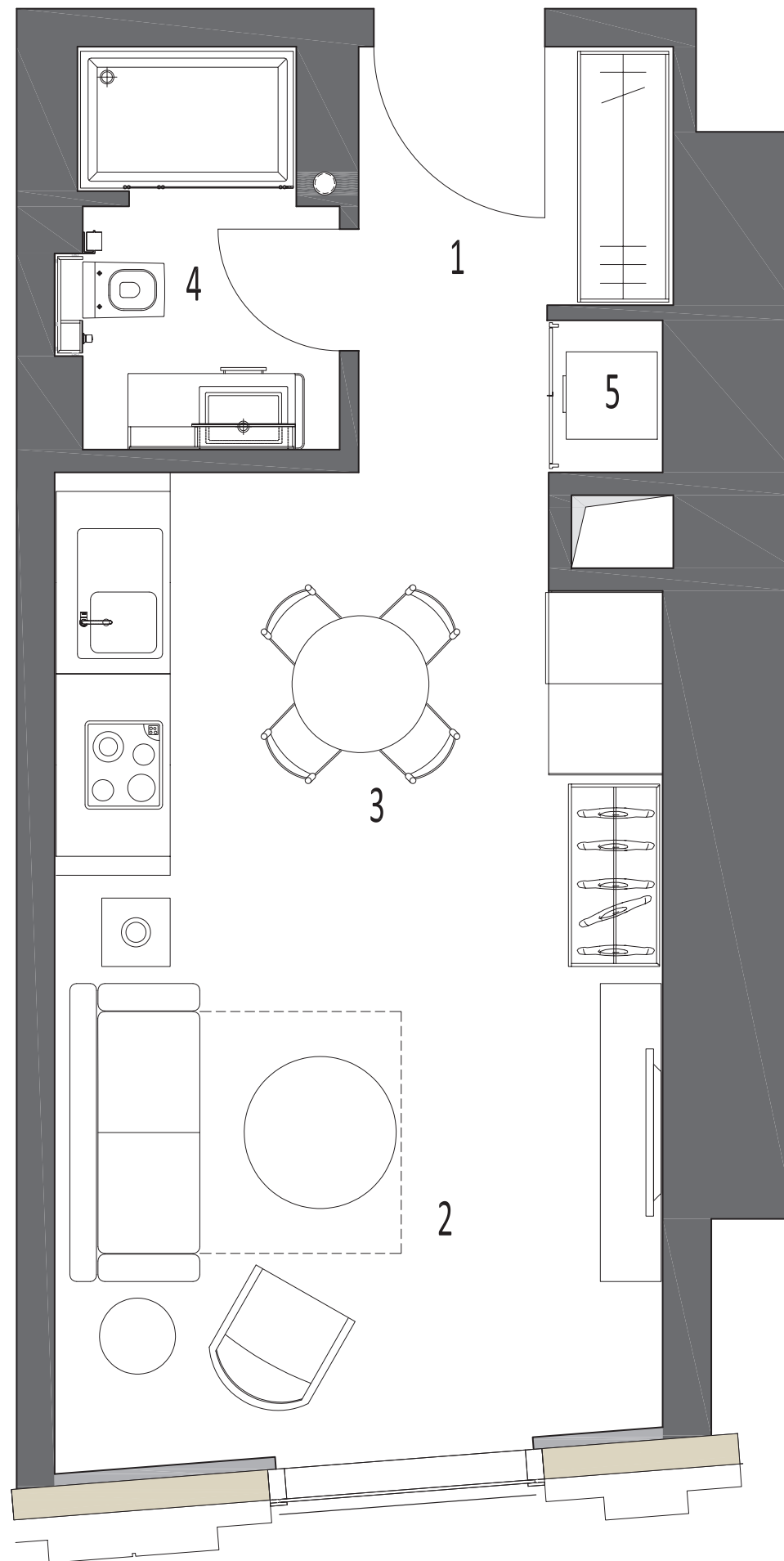
35 (Teknik)
34
33
32
31
30
29
28
27
26 (Teknik)
25
24
23
22
21
20
19
18
17
16
15
14
12
11
10
9
8 (Teknik)
7
6
5
4
3
2
1
Z (Plaza)

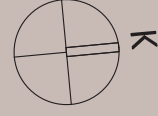
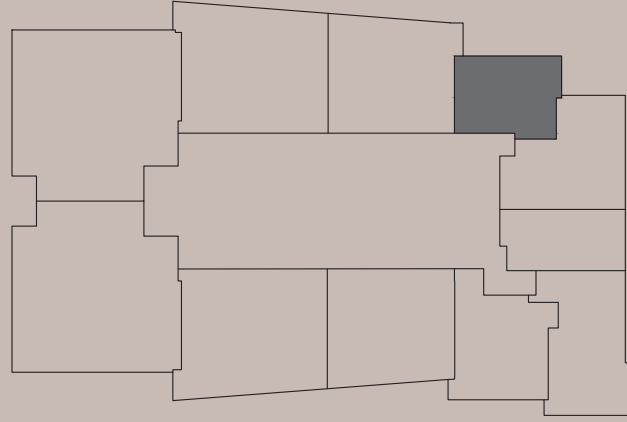
Örnek planlar dairenin projede bulunduğu blok ve kata göre alt yapıdan kaynaklanan farklılıklar gösterebilir. Emaar, projenin uygulanması sırasında teknik açıdan gerekli gördüğü değişiklikleri yapma hakkına sahiptir.
The sample layouts may differ according to the floor or block infrastructures where the circle is placed. Emaar is within right to do any changes or adjustments to the layout, if any arise due to technical necessities in the implementation of the project.



HEIGHTS

Studio / 50.85 m²



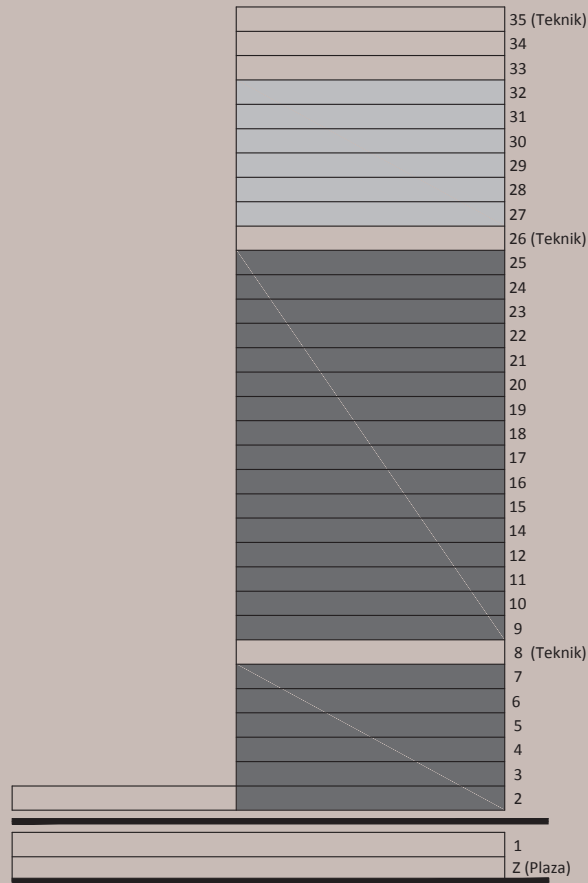


TİP 1-B / TYPE 1-B

1. Giriş holü / Entry: A: 3.52 m²
2. Salon / Living room: A: 12.95 m²
3. Mutfak / Kitchen: A: 8.83 m²
4. Çamaşırılık / W.D: A: 0.56 m²
5. Banyo / Bathroom: A: 3.86 m²
6. Yatak odası / Bedroom: A: 12.03 m²
7. Hol / Hall: A: 1.63 m²

Net alan / Net area: 43.38 m²Brüt alan / Gross area: 61.39 m²

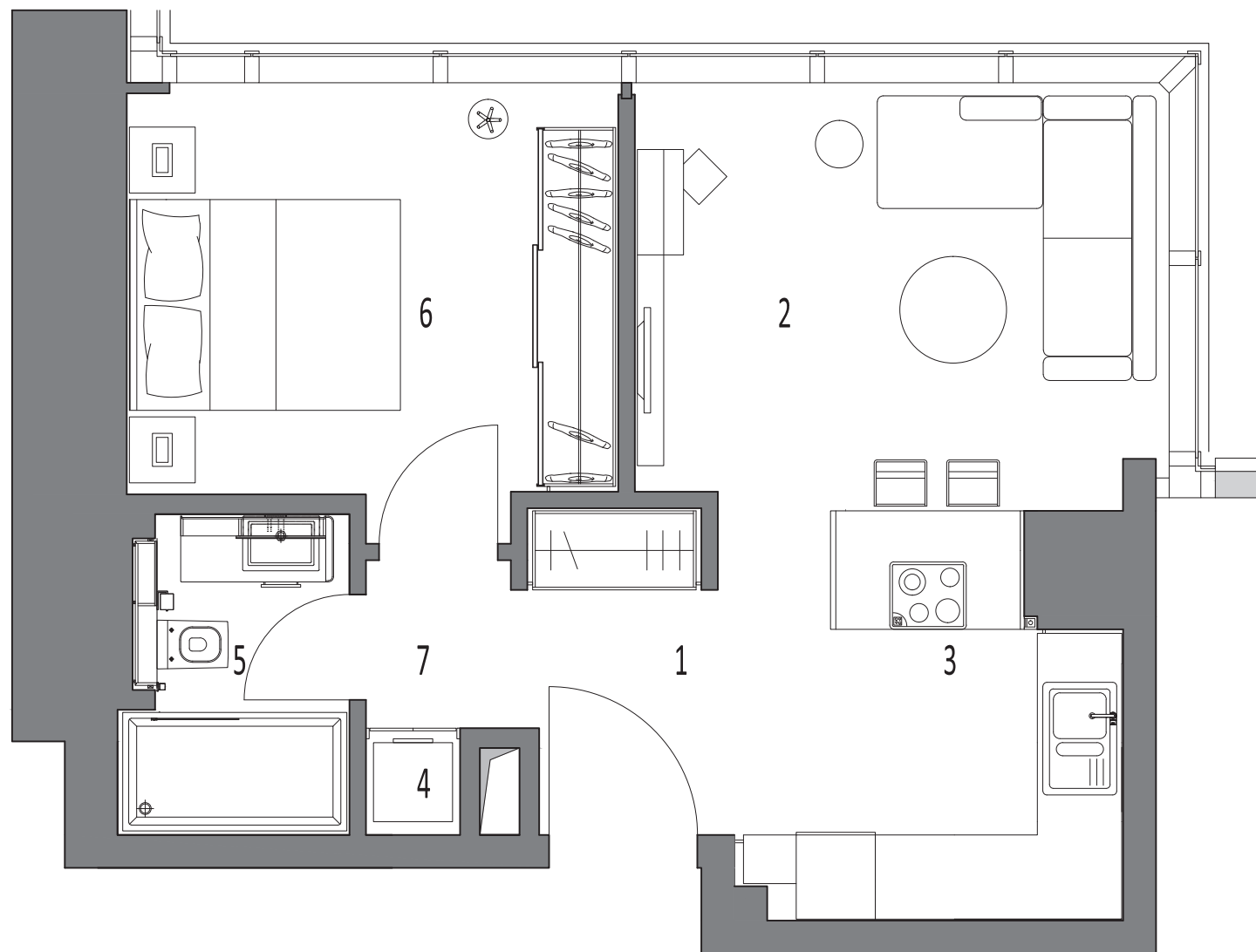
KULE 1





HEIGHTS

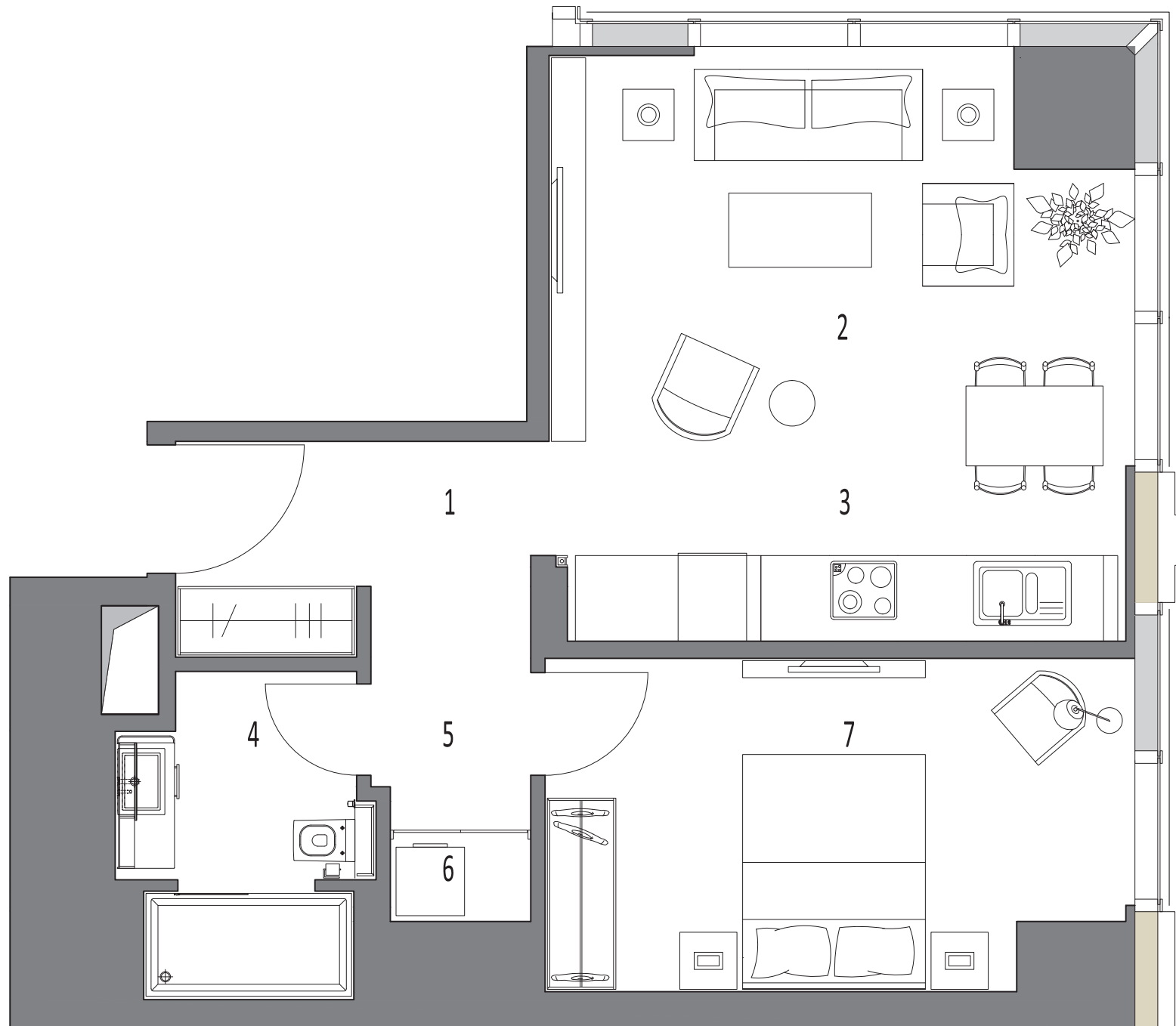
1+1 / 61.39 m²



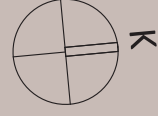
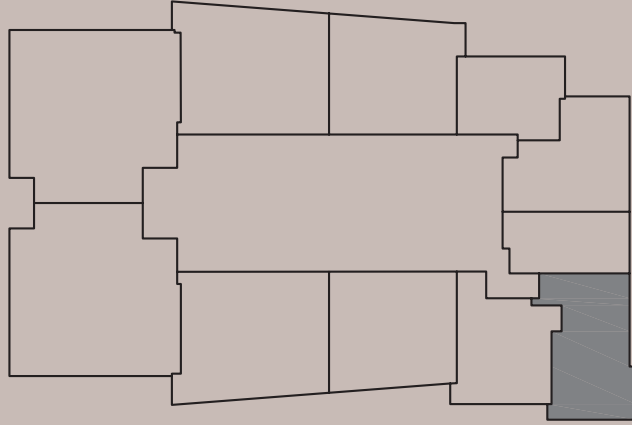


HEIGHTS

1+1 / 77.47 m²



EMAAR
SQUARE



TİP 1-D / TYPE 1-D

1. Giriş holü / Entry: A: 6.38 m²
2. Salon / Living room: A: 19.74 m²
3. Mutfak / Kitchen: A: 9.68 m²
4. Yatak odası / Bedroom: A: 12.06 m²
5. Banyo / Bathroom: A: 6.02 m²
6. Hol / Hall: A: 7.28 m²
7. Çamaşırılık / W.D: A: 1.30 m²

Net alan / Net area: 62.46 m²

Brüt alan / Gross area: 87.65 m²

KULE 1

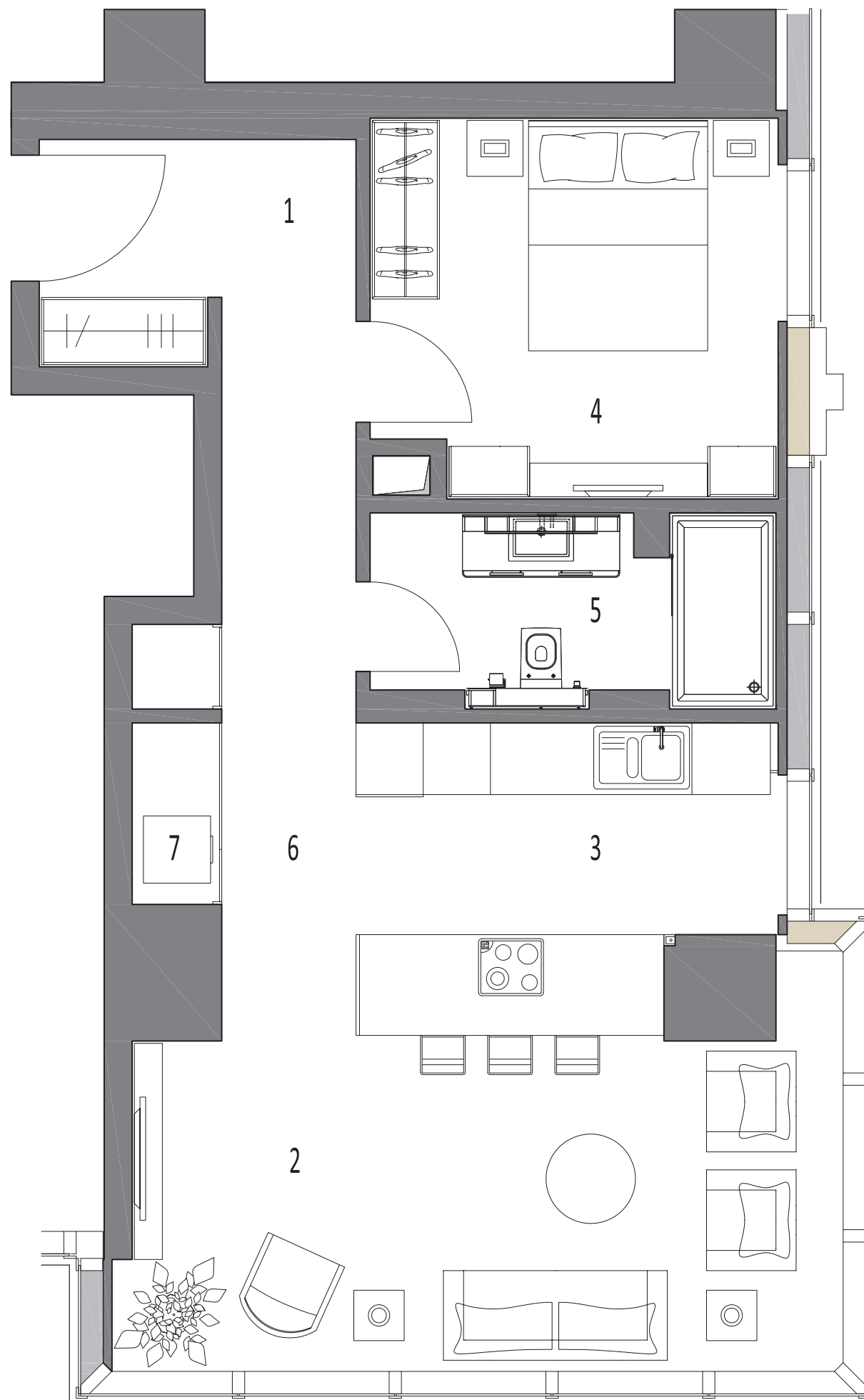
35 (Teknik)
34
33
32
31
30
29
28
27
26 (Teknik)
25
24
23
22
21
20
19
18
17
16
15
14
12
11
10
9
8 (Teknik)
7
6
5
4
3
2
1
Z (Plaza)

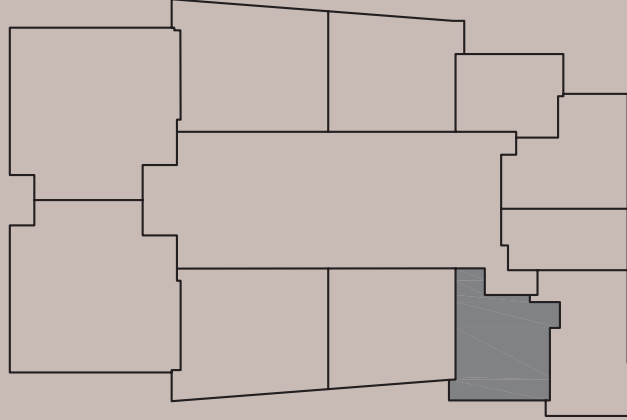
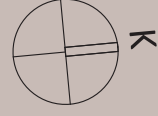
Örnek planlar dairenin projede bulunduğu blok ve kata göre alt yapıdan kaynaklanan farklılıklar gösterebilir. Emaar, projenin uygulanması sırasında teknik açıdan gerekli gördüğü değişiklikleri yapma hakkına sahiptir.
The sample layouts may differ according to the floor or block infrastructures where the circle is placed. Emaar is within right to do any changes or adjustments to the layout, if any arise due to technical necessities in the implementation of the project.



HEIGHTS

1+1 / 87.65 m²





TİP 1-E / TYPE 1-E

1. Giriş holü / Entry: A: 7.27 m²
2. Salon / Living room: A: 18.83 m²
3. Mutfak / Kitchen: A: 7.98 m²
4. Banyo / Bathroom: A: 5.68 m²
5. Çamaşırılık / W.D: A: 0.66 m²
6. Yatak odası / Bedroom: A: 11.11 m²

Net alan / Net area: 51.53 m²

Brüt alan / Gross area: 75.51 m²

Balkon / Balcony: 4.61 m²

Teras ve balkon alanları net ve brüt alan hesabına dahil değildir.
Terrace and balcony areas are not included in net and gross area calculations.

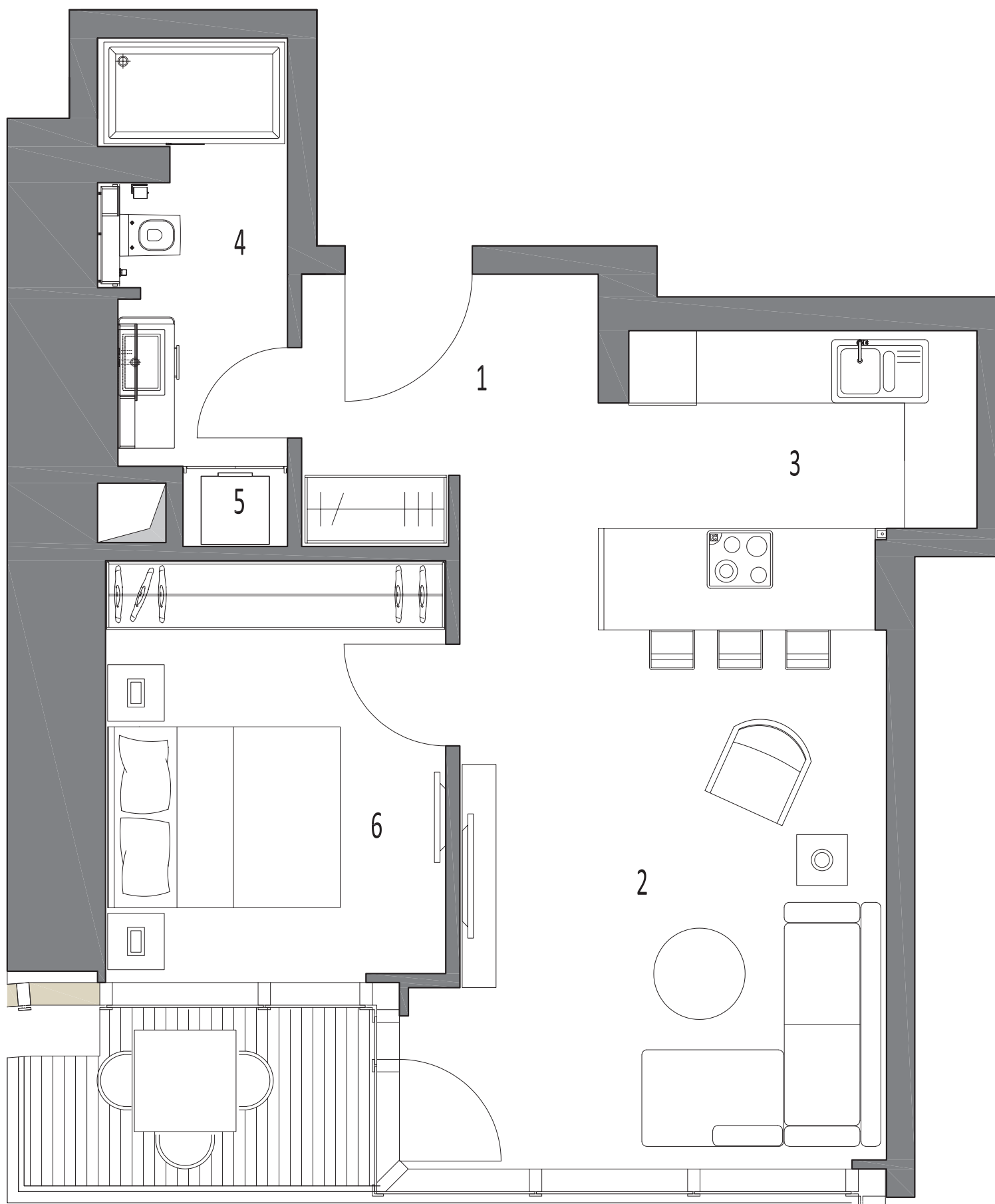
KULE 1

35 (Teknik)
34
33
32
31
30
29
28
27
26 (Teknik)
25
24
23
22
21
20
19
18
17
16
15
14
12
11
10
9
8 (Teknik)
7
6
5
4
3
2
1
Z (Plaza)

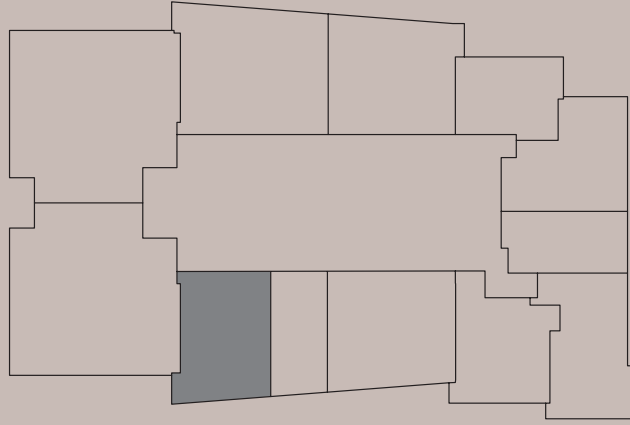


HEIGHTS

1+1 / 75.51 m²



EMAAR
SQUARE



TİP 1-F / TYPE 1-F

1. Giriş holü / Entry: A: 6.69 m²
2. Salon / Living room: A: 24.97 m²
3. Mutfak / Kitchen: A: 9.14 m²
4. Yatak odası / Bedroom: A: 15.78 m²
5. Banyo / Bathroom: A: 3.57 m²
6. Çamaşırılık / W.D: A: 0.71 m²

Net alan / Net area: 60.86 m²

Brüt alan / Gross area: 87.60 m²

KULE 1

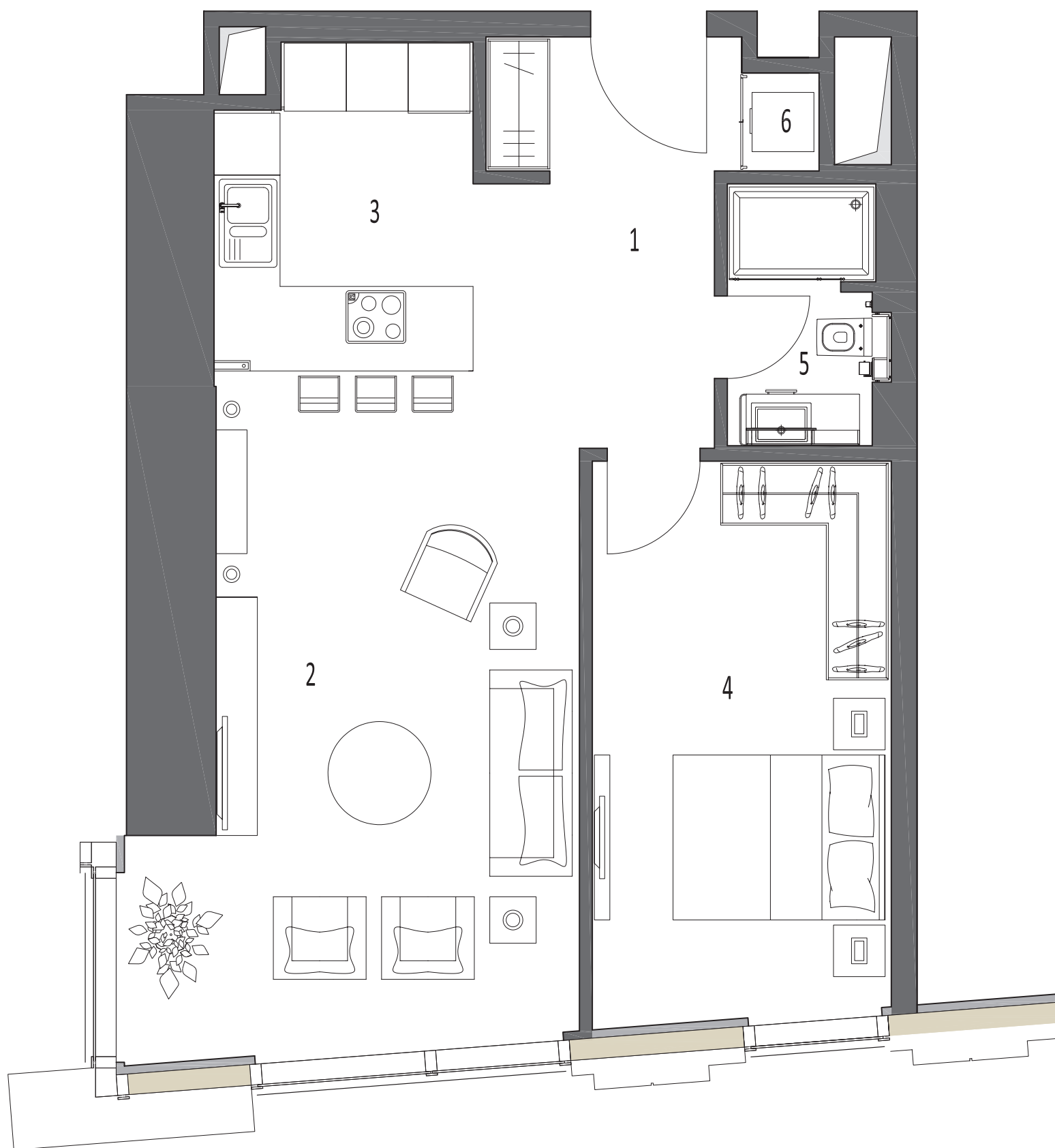
35 (Teknik)
34
33
32
31
30
29
28
27
26 (Teknik)
25
24
23
22
21
20
19
18
17
16
15
14
12
11
10
9
8 (Teknik)
7
6
5
4
3
2
1
Z (Plaza)

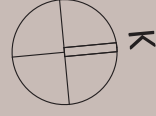
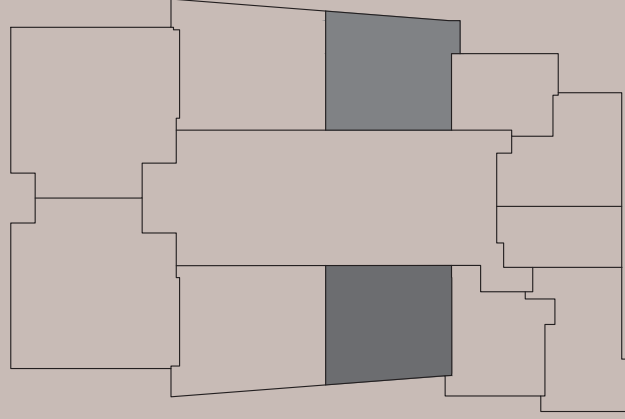
Örnek planlar dairenin projede bulunduğu blok ve kata göre alt yapıdan kaynaklanan farklılıklar gösterebilir. Emaar, projenin uygulanması sırasında teknik açıdan gerekli gördüğü değişiklikleri yapma hakkına sahiptir.
The sample layouts may differ according to the floor or block infrastructures where the circle is placed. Emaar is within right to do any changes or adjustments to the layout, if any arise due to technical necessities in the implementation of the project.



HEIGHTS

1+1 / 87.60 m²





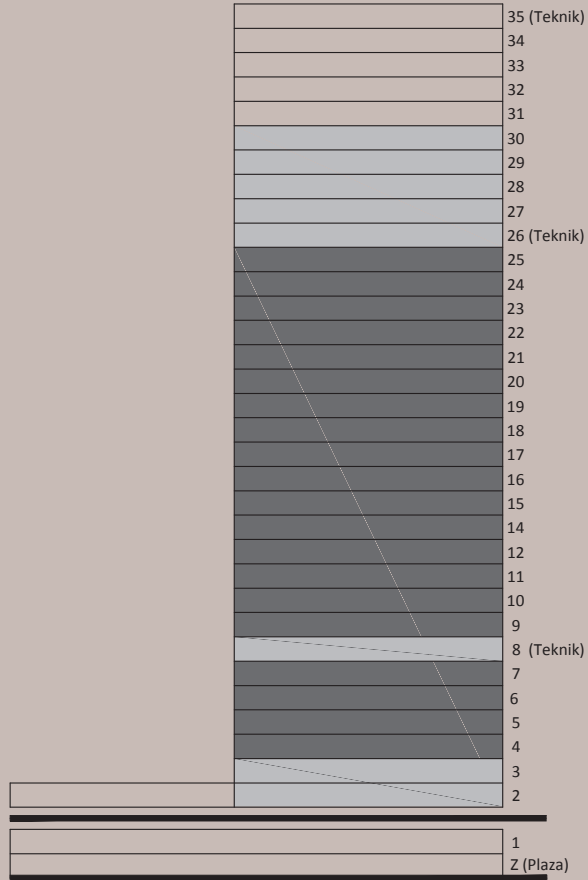
TİP 2-A / TYPE 2-A

1. Giriş holü / Entry: A: 4.38 m²
2. Salon / Living room: A: 21.95 m²
3. Mutfak / Kitchen: A: 7.05 m²
4. Çamaşırılık / W.D: A: 0.55 m²
5. Banyo / Bathroom: A: 5.02 m²
6. E. banyo / Master bathroom: 4.78 m²
7. E. yatak odası /
Master bedroom: A: 16.70 m²
8. Yatak odası / Bedroom: A: 11.66 m²
9. Hol / Hall: A: 3.53 m²

Net alan / Net area: 75.62 m²

Brüt alan / Gross area: 108.10 m²

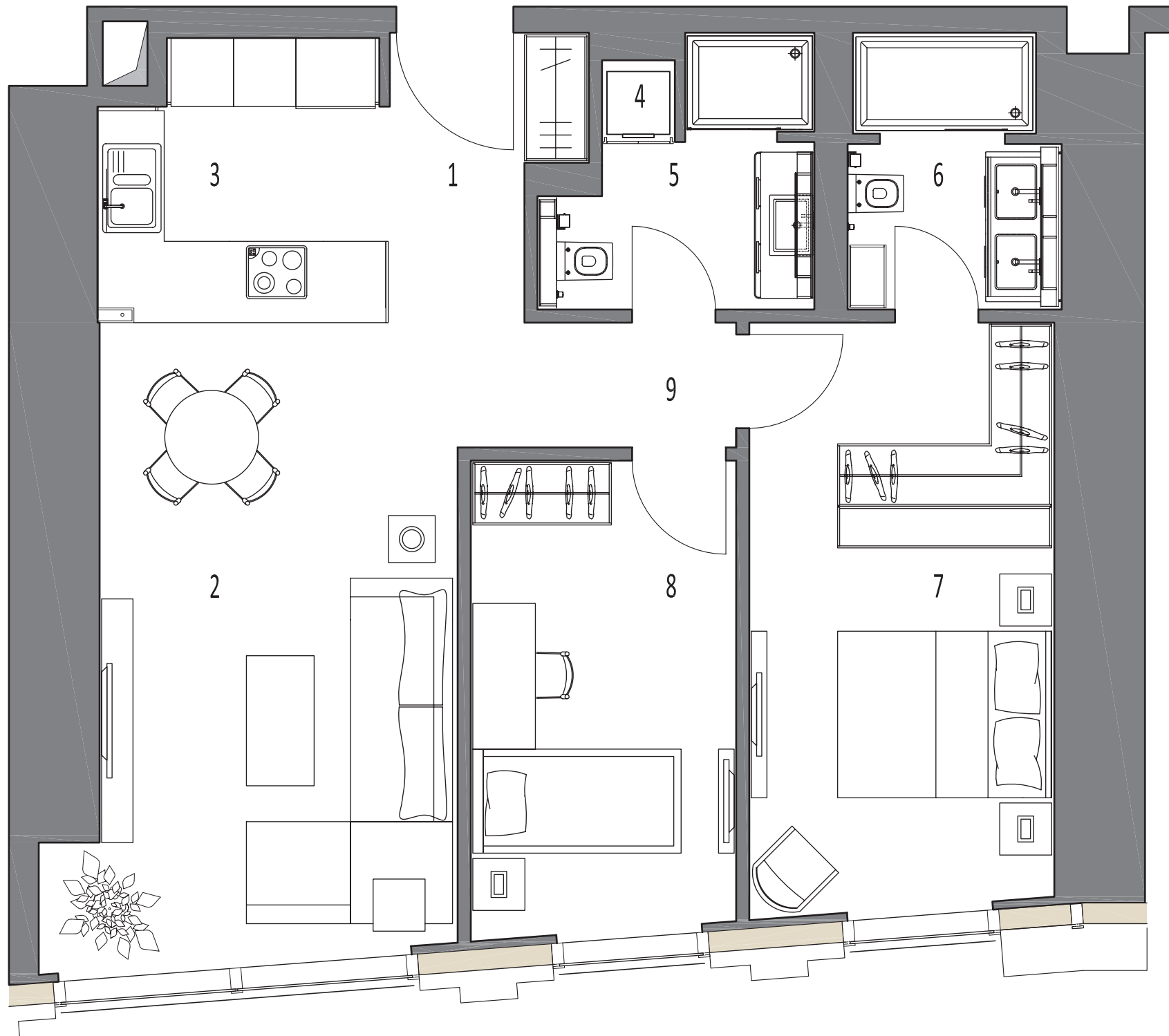
KULE 1

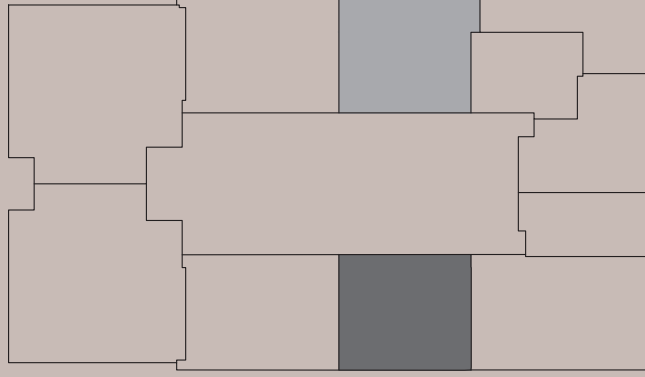
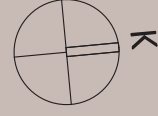




HEIGHTS

2+1 / 108.10 m²



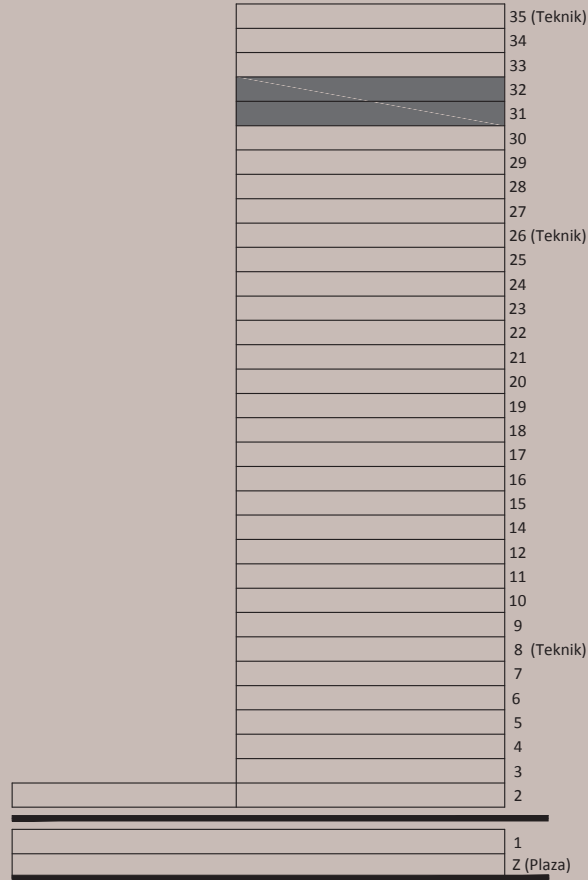


TİP 2-A6 / TYPE 2-A6

1. Giriş holü / Entry: A: 4.55 m²
2. Salon / Living room: A: 19.27 m²
3. Mutfak / Kitchen: A: 7.83 m²
4. Çamaşırılık / W.D: A: 0.55 m²
5. Banyo / Bathroom: A: 5.02 m²
6. E. banyo / Master bathroom: A: 5.11 m²
7. E. yatak odası /
Master bedroom: A: 16.86 m²
8. Yatak odası / Bedroom: A: 11.79 m²
9. Hol / Hall: A: 3.83 m²

Net alan / Net area: 74.81 m²Brüt alan / Gross area: 106.13 m²

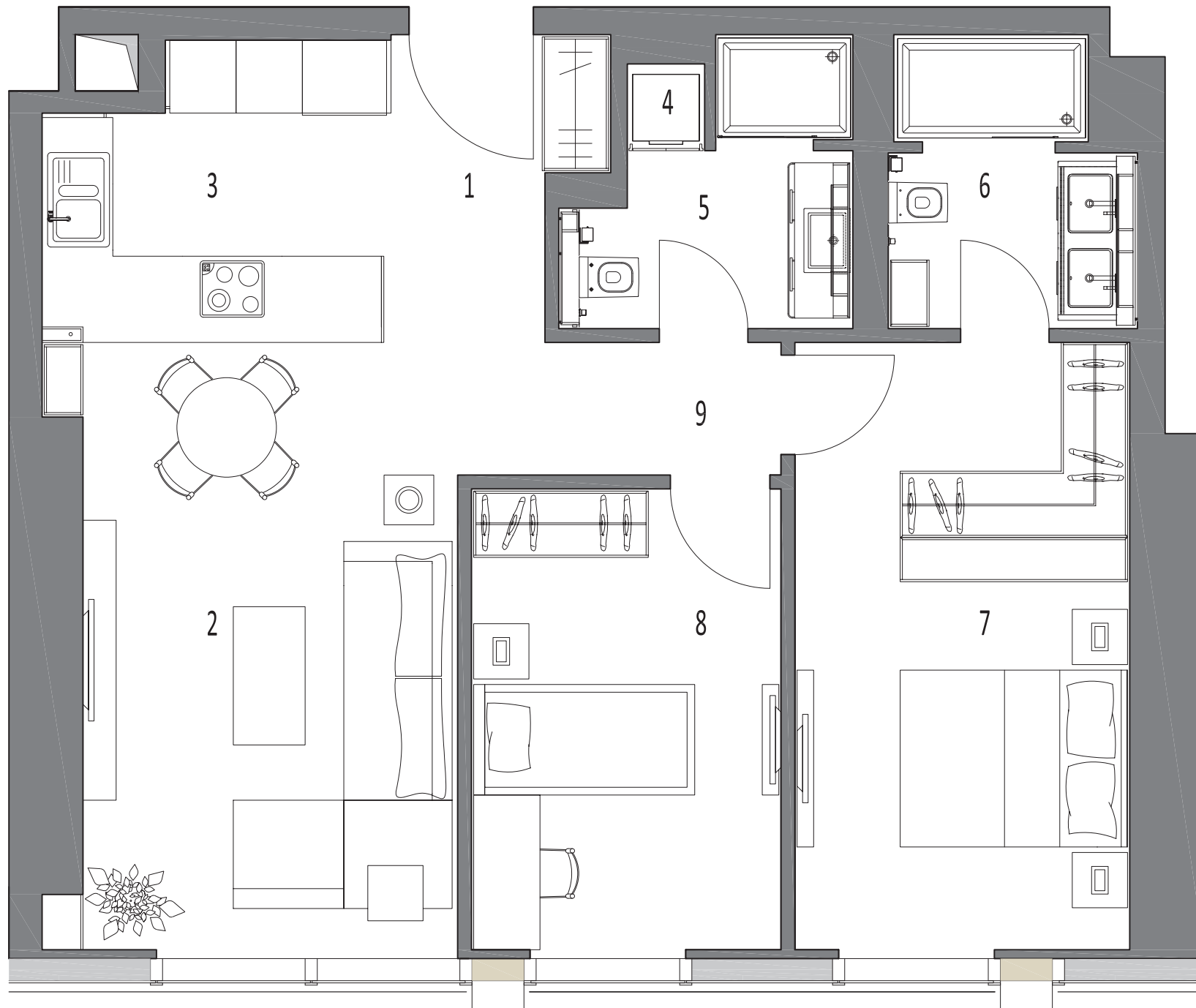
KULE 1

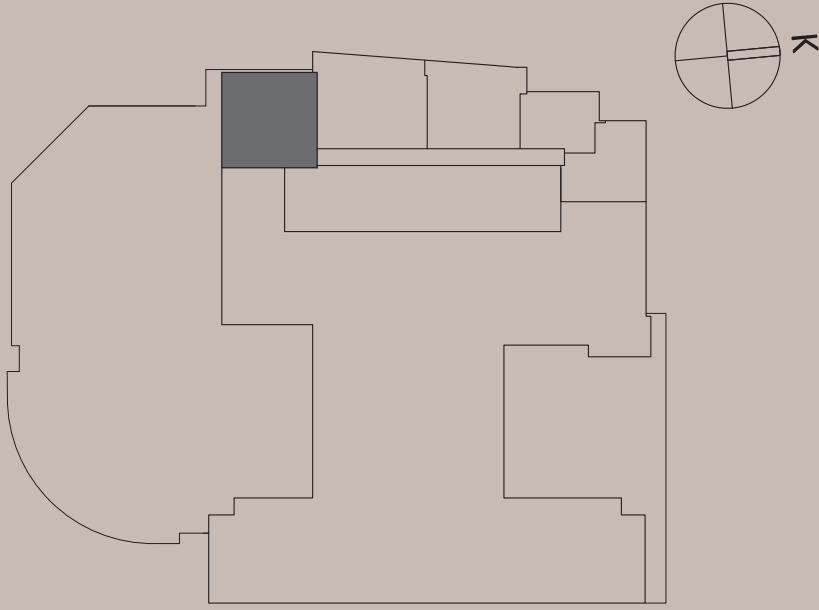




HEIGHTS

2+1 / 106.13 m²





TİP 2-B / TYPE 2-B

1. Giriş holü / Entry: A: 8.81 m²
2. Salon / Living room: A: 19.41 m²
3. Mutfak / Kitchen: A: 7.88 m²
4. Banyo / Bathroom: A: 4.44 m²
5. E. banyo / Master bathroom: A: 5.57 m²
6. E. yatak odası /
Master bedroom: A: 19.79 m²
7. Yatak odası / Bedroom: A: 14.64 m²
8. Çamaşırılık / W.D: A: 0.71 m²
9. Hol / Hall: A: 5.66 m²

Net alan / Net area: 86.91 m²Brüt alan / Gross area: 125.37 m²

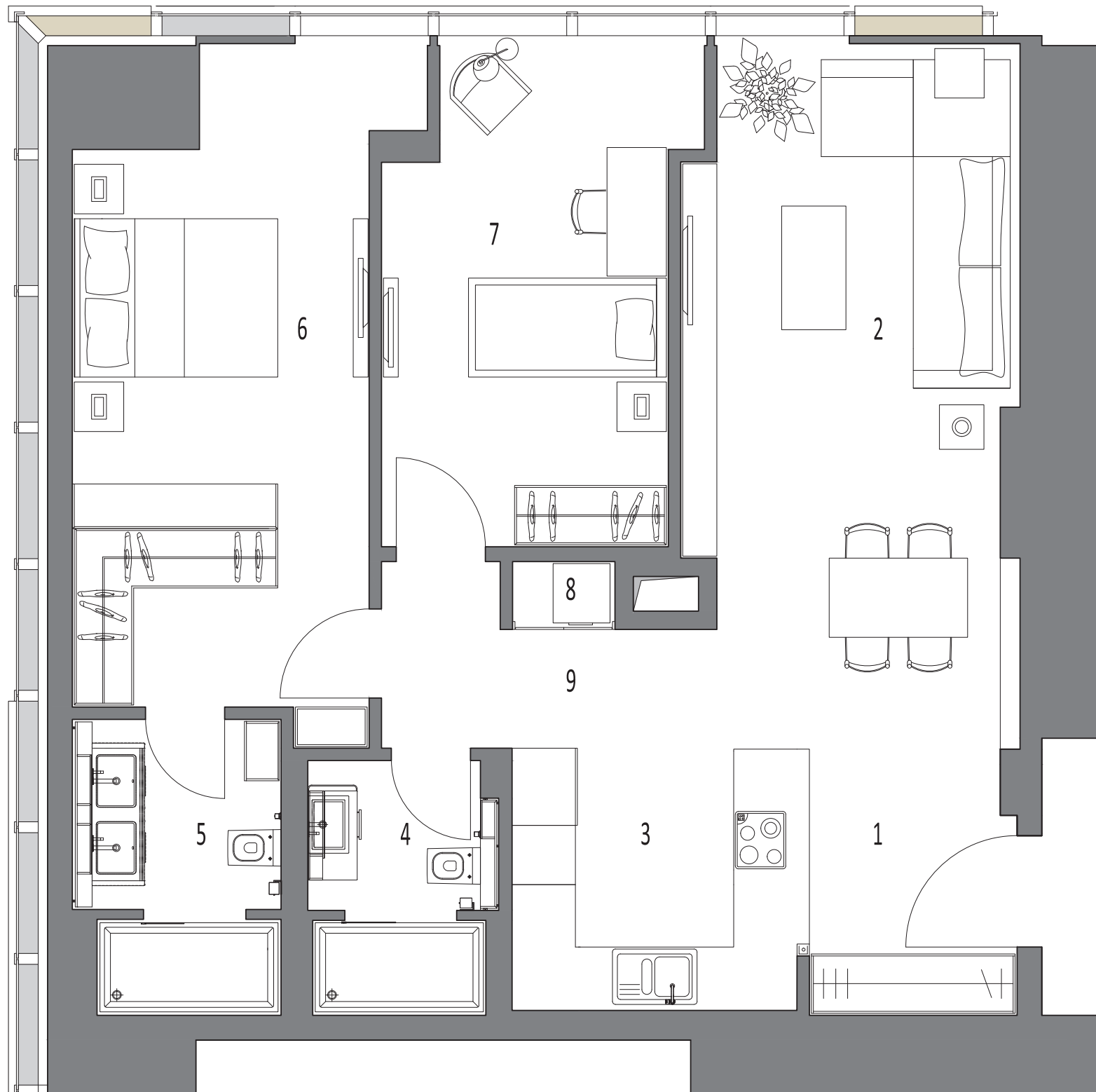
KULE 1

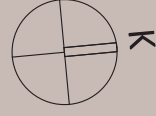
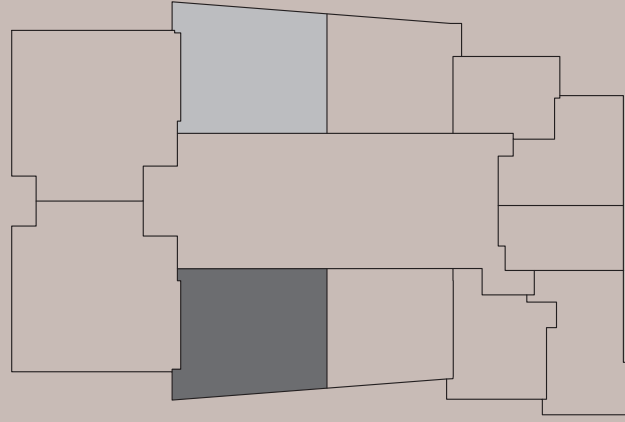
35 (Teknik)
34
33
32
31
30
29
28
27
26 (Teknik)
25
24
23
22
21
20
19
18
17
16
15
14
12
11
10
9
8 (Teknik)
7
6
5
4
3
2
1
Z (Plaza)



HEIGHTS

2+1 / 125.37 m²



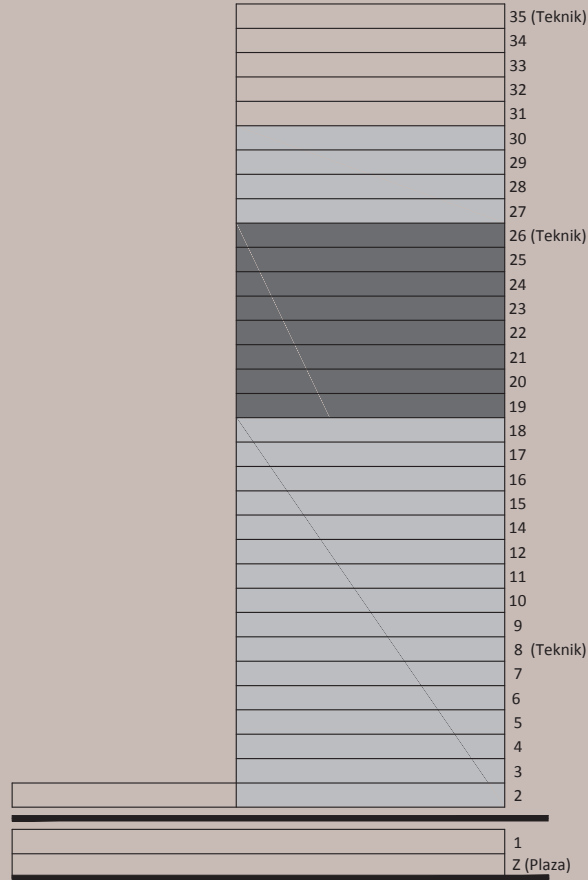


TİP 2-C / TYPE 2-C

1. Giriş holü / Entry: A: 4.18 m²
2. Salon / Living room: A: 30.31 m²
3. Mutfak / Kitchen: A: 9.75 m²
4. Çalışma odası / Study room: A: 5.31 m²
5. Banyo / Bathroom: A: 5.81m²
6. Çamaşırılık / W.D: A: 0.79 m²
7. E. banyo / Master bathroom: A: 5.55 m²
8. E. yatak odası /
Master bedroom: A: 19.49 m²
9. Yatak odası / Bedroom: A: 14.73 m²
10. Hol / Hall: A: 4.08 m²

Net alan / Net area: 100.00 m²Brüt alan / Gross area: 141.86 m²

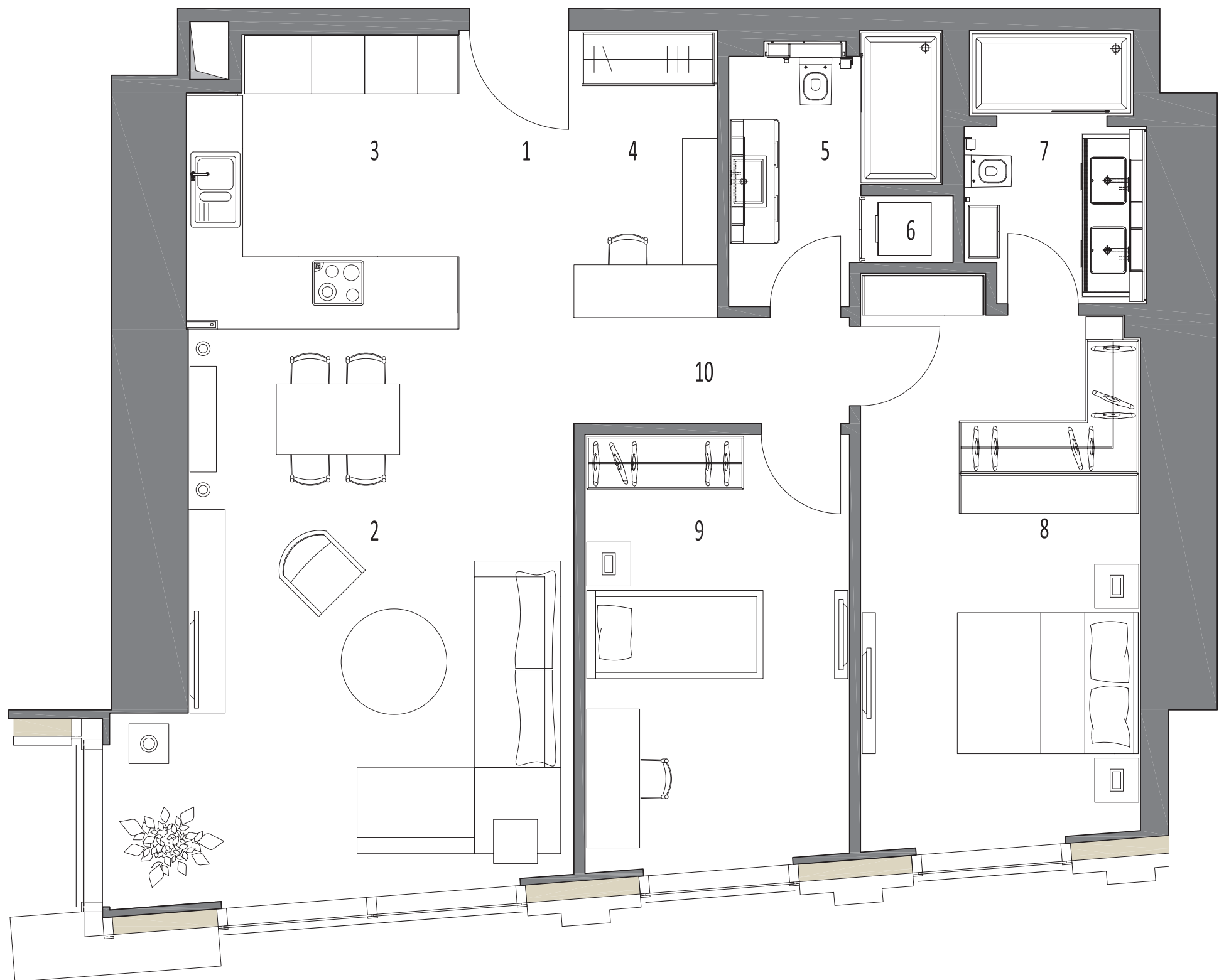
KULE 1

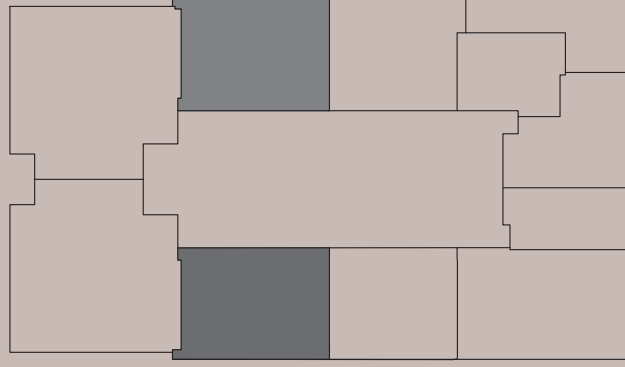
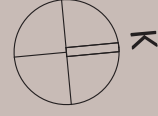




HEIGHTS

2+1 / 141.86 m²





KULE 1

35 (Teknik)
34
33
32
31
30
29
28
27
26 (Teknik)
25
24
23
22
21
20
19
18
17
16
15
14
12
11
10
9
8 (Teknik)
7
6
5
4
3
2
1
Z (Plaza)

TİP 2-C4 / TYPE 2-C4

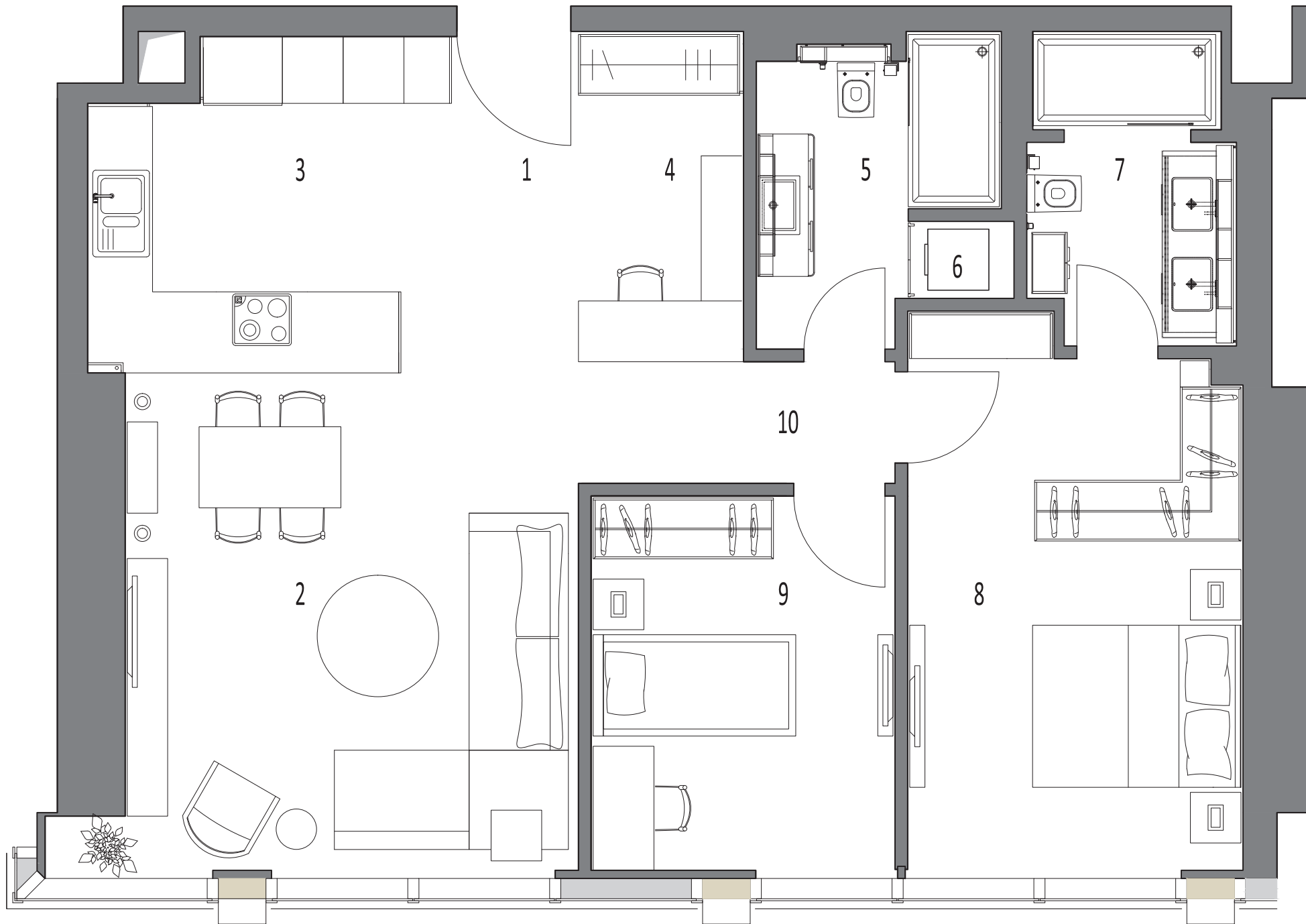
1. Giriş holü / Entry: A: 4.18 m²
2. Salon / Living room: A: 22.86 m²
3. Mutfak / Kitchen: A: 10.94 m²
4. Çalışma odası / Study room: A: 5.31 m²
5. Banyo / Bathroom: A: 5.81 m²
6. Çamaşırılık / W.D: A: 0.79 m²
7. E. banyo / Master bathroom: A: 5.55 m²
8. E. yatak odası /
Master bedroom: A: 17.63 m²
9. Yatak odası / Bedroom: A: 11.19 m²
10. Hol / Hall: A: 4.07 m²

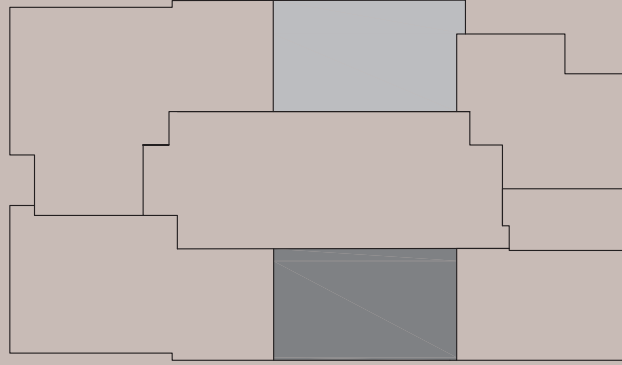
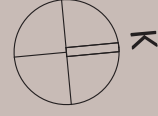
Net alan / Net area: 88.33 m²Brüt alan / Gross area: 124.54 m²



HEIGHTS

2+1 / 124.54 m²





KULE 1

35 (Teknik)
34
33
32
31
30
29
28
27
26 (Teknik)
25
24
23
22
21
20
19
18
17
16
15
14
12
11
10
9
8 (Teknik)
7
6
5
4
3
2
1
Z (Plaza)

TİP 2-D / TYPE 2-D

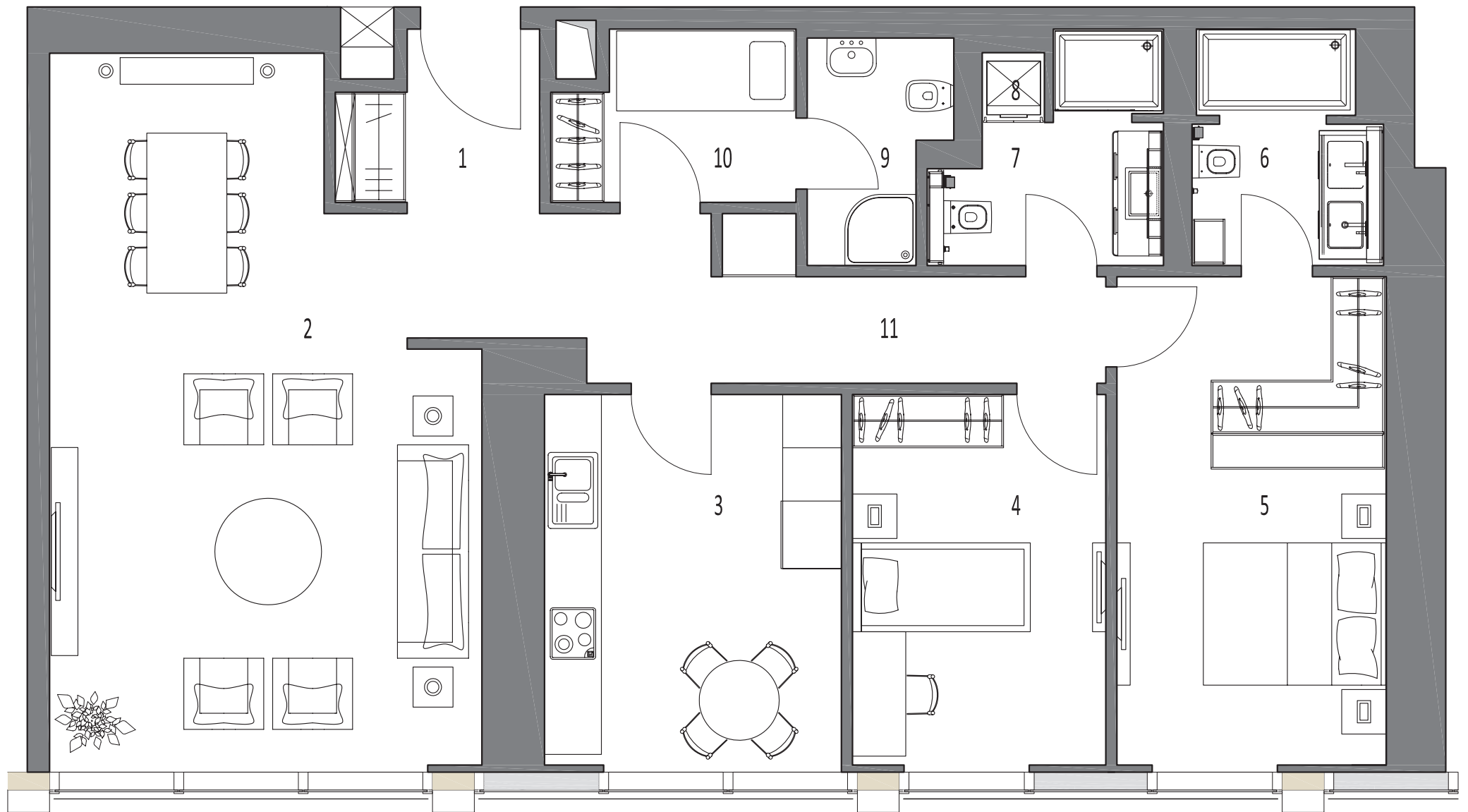
1. Giriş holü / Entry: A: 6.18 m²
2. Salon / Living room: A: 34.82 m²
3. Mutfak / Kitchen: A: 14.14 m²
4. Yatak odası / Bedroom: A: 12.00 m²
5. E. yatak odası /
Master bedroom: A: 16.86 m²
6. E. banyo / Master bathroom: A: 0.95 m²
7. Banyo / Bathroom: A: 5.02m²
8. Çamaşırılık / W.D: A: 0.55 m²
9. Hizmetli banyo /
Maid's bathroom A: 3.62 m²
10. Hizmetli odası / Maid's room: A: 5.01 m²
11. Hol / Hall: A: 9.88 m²

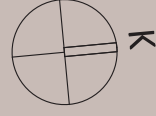
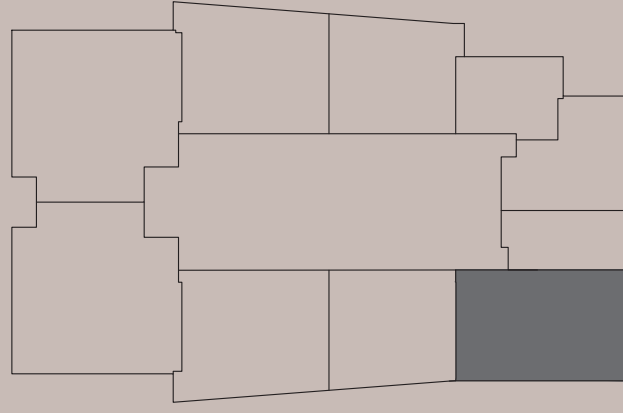
Net alan / Net area: 113.06 m²
Brüt alan / Gross area: 159.61 m²



HEIGHTS

2,5+1 / 159.61 m²





TİP 2-E / TYPE 2-E

1. Giriş holü / Entry: A: 8.27 m²
2. Salon / Living room: A: 32.21 m²
3. Mutfak / Kitchen: A: 15.06 m²
4. E. yatak odası /
Master bedroom: A: 17.30 m²
5. E. banyo / Master bathroom: A: 5.04 m²
6. Yatak odası / Bedroom: A: 12.66 m²
7. Banyo / Bathroom: A: 5.56 m²
8. Hol / Hall: A: 4.32 m²
9. Çamaşırılık / W.D: A: 0.82 m²

Net alan / Net area: 101.24 m²Brüt alan / Gross area: 141.94 m²

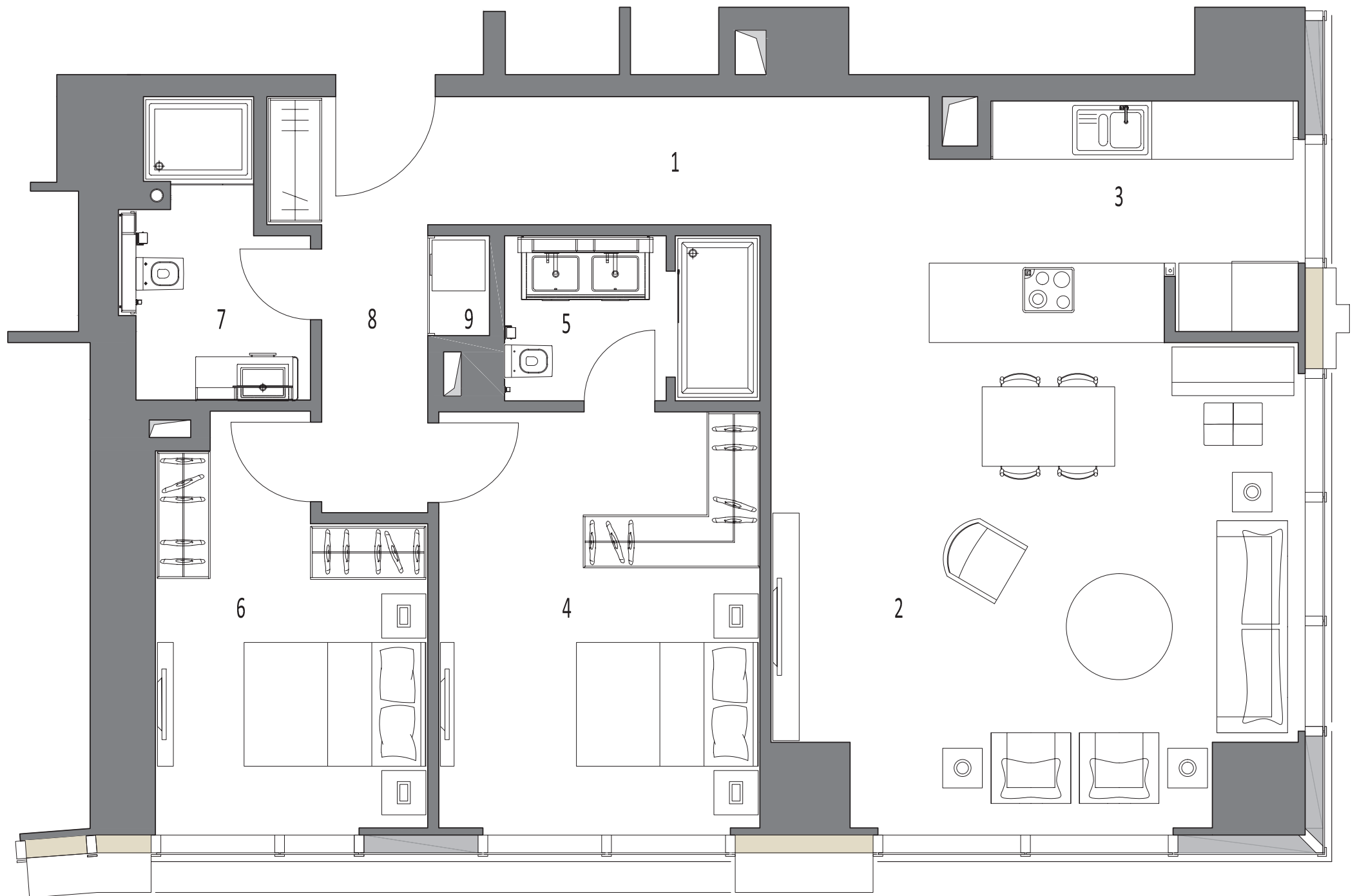
KULE 1

35 (Teknik)
34
33
32
31
30
29
28
27
26 (Teknik)
25
24
23
22
21
20
19
18
17
16
15
14
12
11
10
9
8 (Teknik)
7
6
5
4
3
2
1
Z (Plaza)

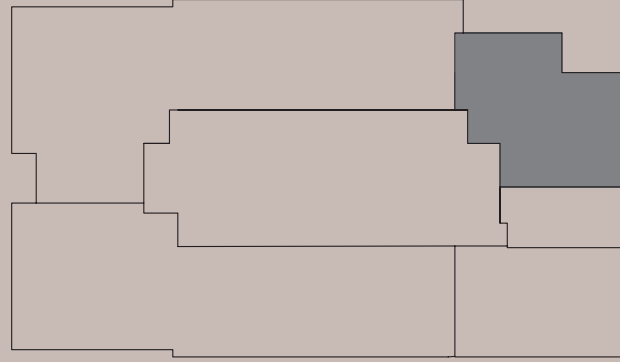
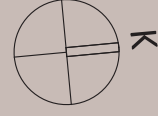


HEIGHTS

2+1 / 141.94 m²



EMAAR
SQUARE



TİP 2-F / TYPE 2-F

1. Giriş holü / Entry: A: 8.50 m²
2. Mutfak / Kitchen: A: 13.33 m²
3. Salon / Living room: A: 28.31 m²
4. E. yatak odası /
Master bedroom: A: 20.91 m²
5. E. banyo / Master bathroom: A: 5.80 m²
6. Hol / Hall: A: 4.54 m²
7. Çamaşırılık / W.D: A: 0.56 m²
8. Banyo / Bathroom: A: 3.86 m²
9. Yatak odası / Bedroom: A: 12.49 m²

Net alan / Net area: 98.30 m²

Brüt alan / Gross area: 138.67 m²

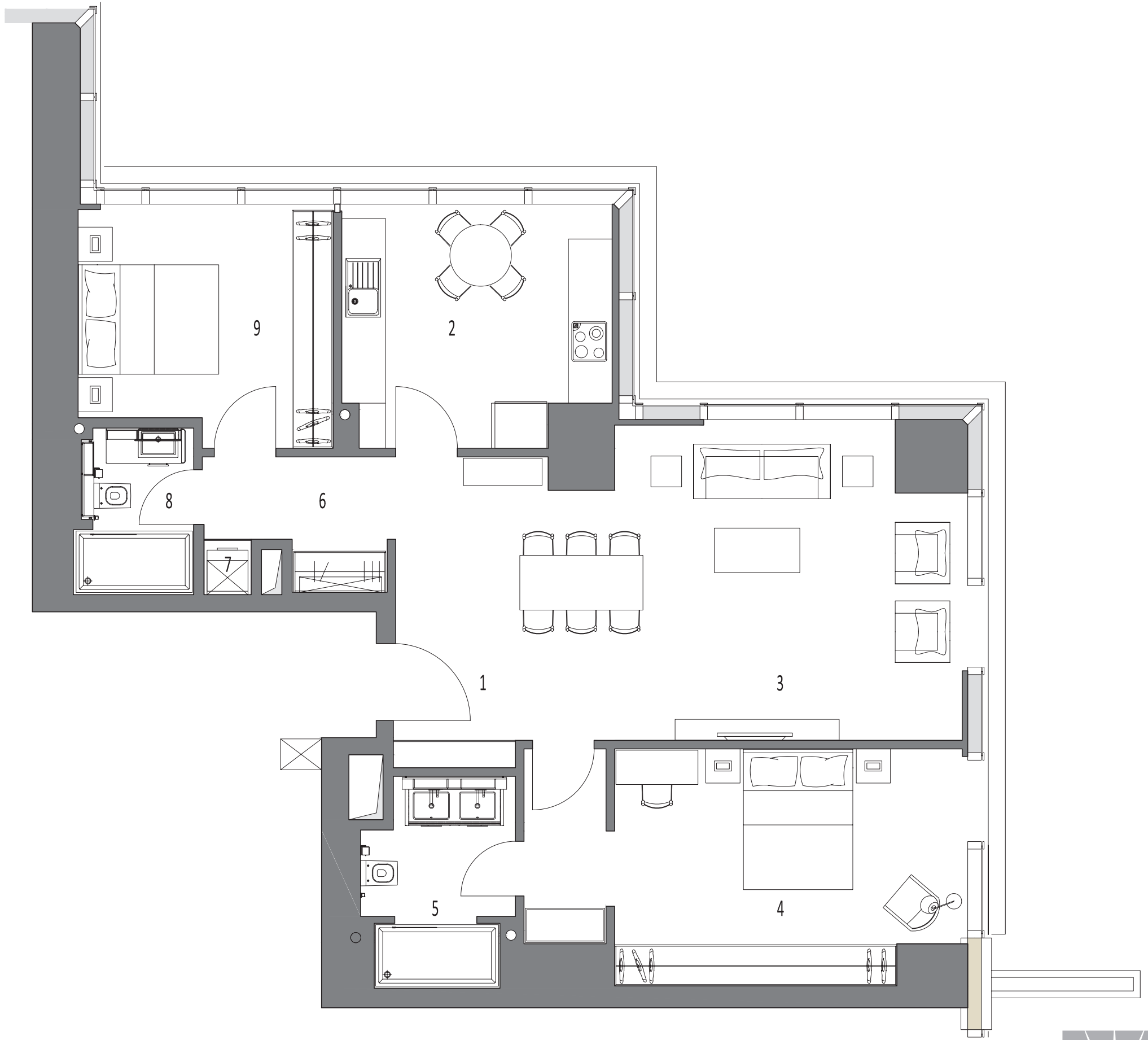
KULE 1

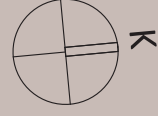
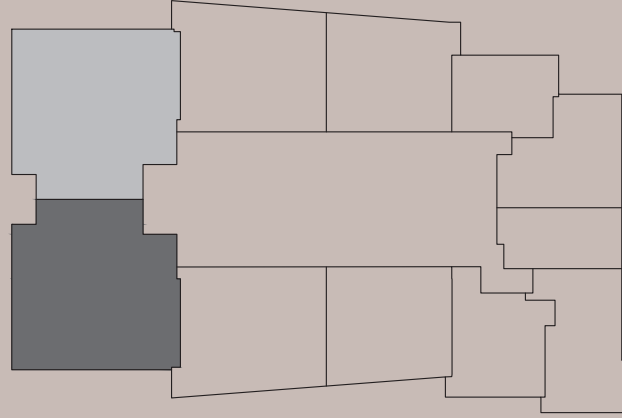
35 (Teknik)
34
33
32
31
30
29
28
27
26 (Teknik)
25
24
23
22
21
20
19
18
17
16
15
14
12
11
10
9
8 (Teknik)
7
6
5
4
3
2
1
Z (Plaza)



HEIGHTS

2+1 / 138.67 m²





TİP 3-A / TYPE 3-A

1. Giriş holü / Entry: A: 12.68 m²
2. Salon / Living room: A: 35.31 m²
3. Mutfak / Kitchen: A: 15.67 m²
4. Misafir WC / Powder room: A: 2.28m²
5. Banyo / Bathroom: A: 5.53 m²
6. Çamaşırılık / W.D: A: 0.82 m²
- 7-8. Hizmetli banyo / Maid's bathroom
Hizmetli odası / Maid's room: A: 6.86 m²
9. Yatak odası 1 / Bedroom 1: A: 11.81 m²
10. Yatak odası 2 / Bedroom 2: A: 11.19 m²
11. E. banyo / Master bathroom: A: 8.78 m²
12. E. yatak odası /
Master bedroom: A: 16.05 m²
13. Soyunma odası /
Walk in closet: A: 6.64 m²
14. Hol / Hall: A: 9.12 m²

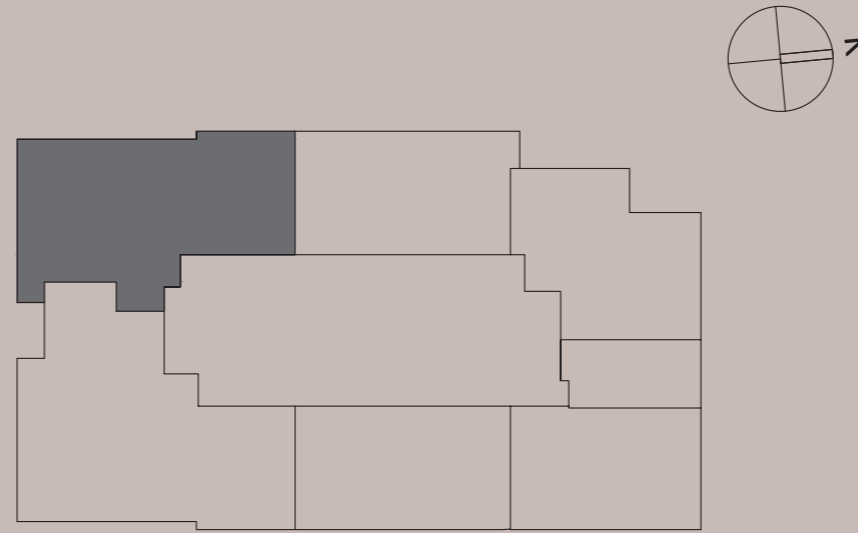
Net alan / Net area: 142.74 m²
Brüt alan / Gross area: 202.34 m²

KULE 1

35 (Teknik)
34
33
32
31
30
29
28
27
26 (Teknik)
25
24
23
22
21
20
19
18
17
16
15
14
12
11
10
9
8 (Teknik)
7
6
5
4
3
2
1
Z (Plaza)

HEIGHTS
3,5+1 / 202.34 m²

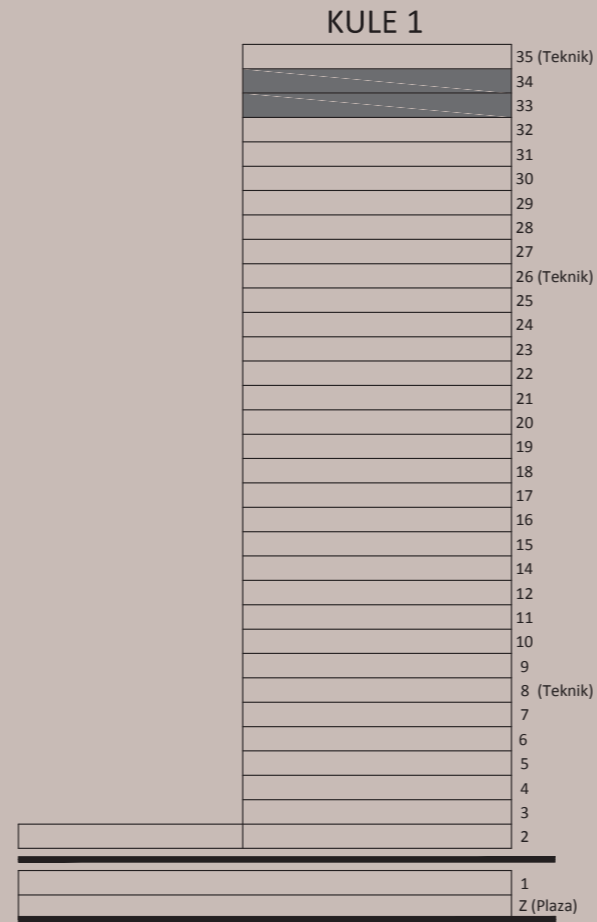




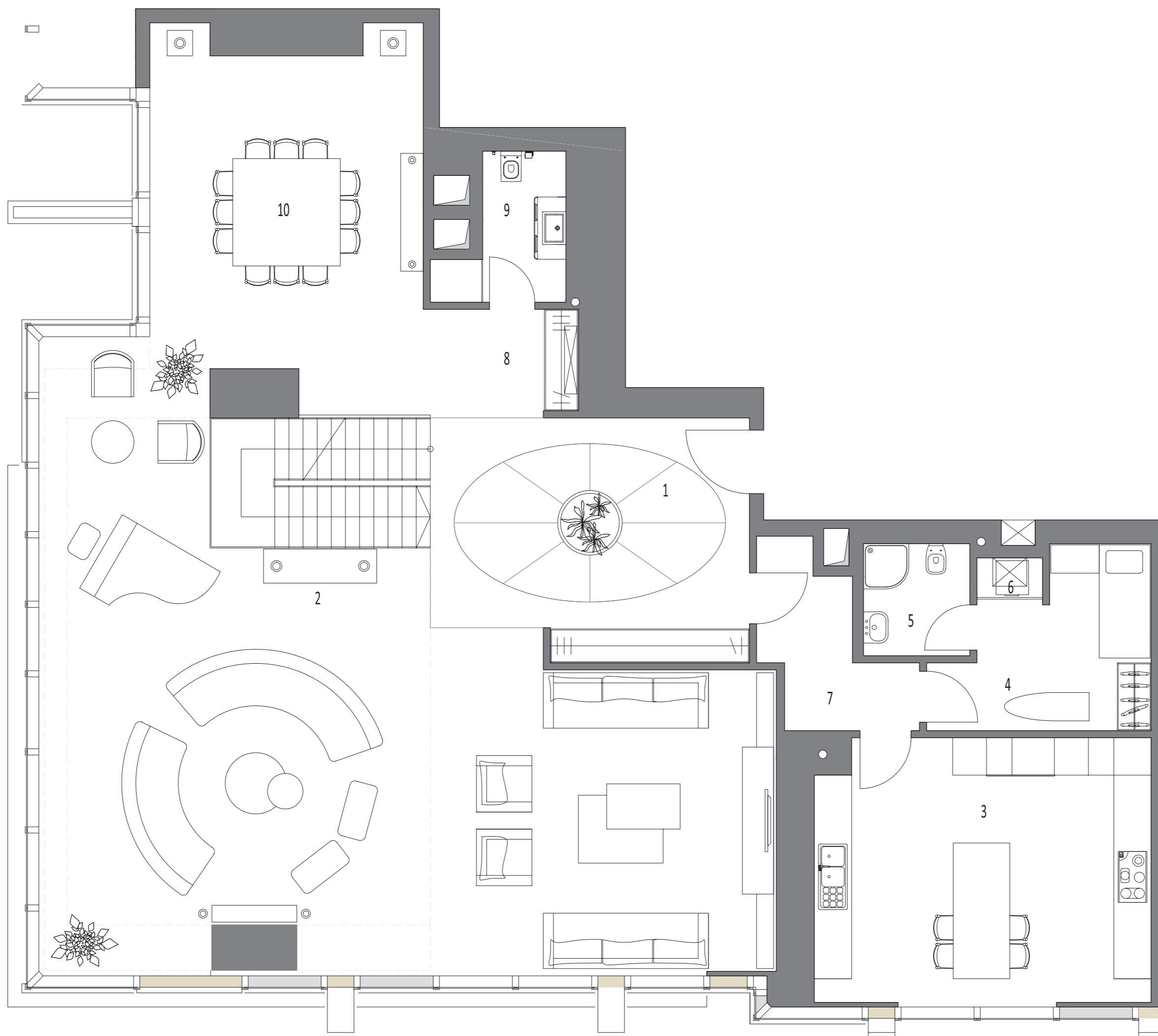
PENTHOUSE 1 ALT / LOWER

1. Giriş holü / Entry: A: 23.22 m²
2. Salon / Living room: A: 105.72 m²
3. Mutfak / Kitchen: A: 27.66 m²
4. Hizmetli odası / Maid's room: A: 10.08 m²
5. Hizmetli banyosu /
Maid's bathroom: A: 3.72 m²
6. Çamaşırılık / W.D. : A: 0.85m²
7. Hol 1 / Hall 1: A: 6.39 m²
8. Hol 2 / Hall 2: A: 5.28 m²
9. Misafir WC / Powder room: A: 4.62m²
10. Yemek odası / Dining room: A: 29.30 m²

Net alan / Net area: 216.84 m²



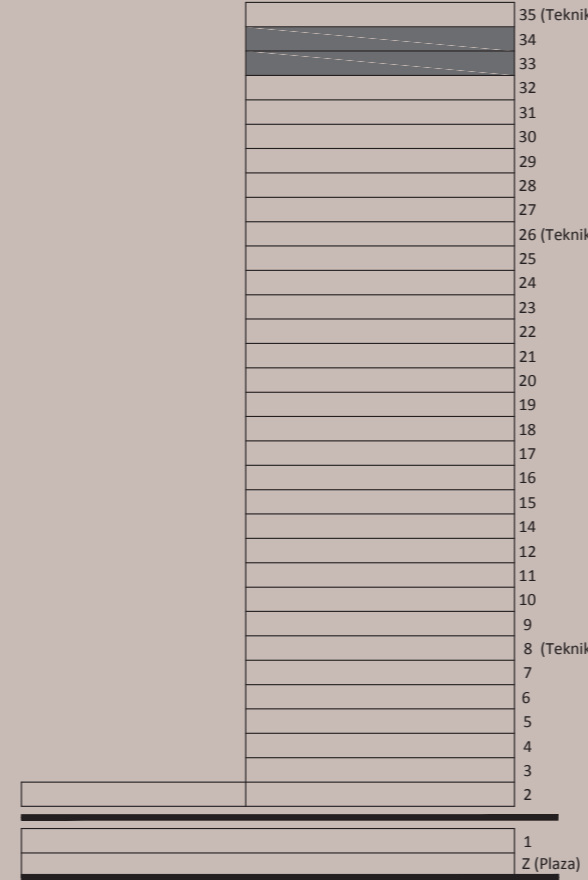
HEIGHTS
Penthouse



EMAAR
SQUARE



KULE 1



PENTHOUSE 1 ÜST / UPPER

11. Depo / Storage: A: 4.07 m²
12. Mini mutfak / Kitchenette: A: 5.85 m²
13. Oturma odası / Family room: A: 61.04 m²
14. Misafir banyo/
Guest bathroom: A: 4.55 m²
15. Misafir yatak odası /
Guest bedroom: A: 18.53 m²
16. Yatak odası 1 / Bedroom 1: A: 16.56 m²
17. Yatak odası 2 / Bedroom 2: A: 15.59 m²
18. E. Yatak odası /
Master suite: A: 33.65 m²
19. Soyunma odası /
Walk in closet: A: 25.82 m²
20. E. Banyo / Master bathroom: A: 7.98 m²
21. Soyunma odası 2 /
Walk in closet 2: A: 11.05 m²
22. Banyo / Bathroom A: 5.60 m²
23. Misafir WC / Powder room: A: 2.89 m²
24. Hol 3 / Hall 3: A: 17.73 m²

Net alan / Net area: 230.91 m²

Galeri alanı / Gallery area: 73.09 m²

Toplam net alan / Total net area: 447.75 m²

Toplam brüt alan / Total gross area: 733.74 m²

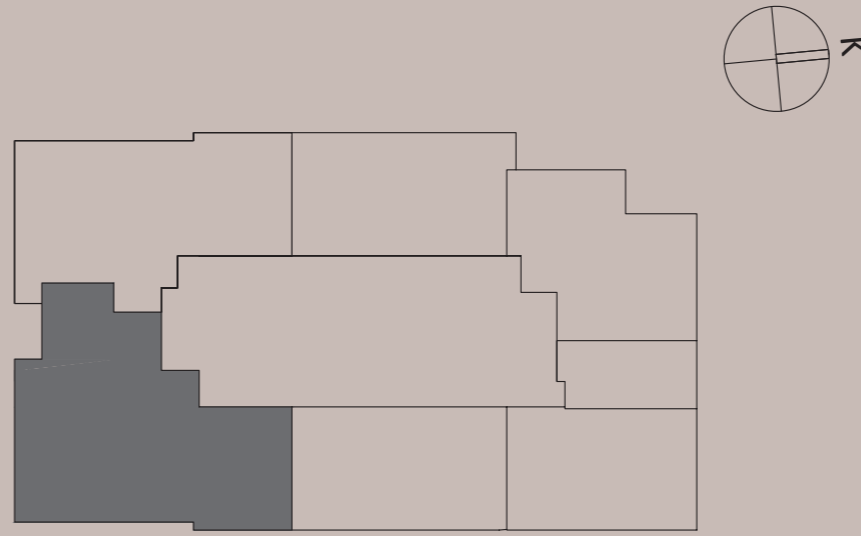
EMAAR
SQUARE

Örnek planlar dairenin projede bulunduğu blok ve kata göre alt yapıdan kaynaklanan farklılıklar gösterebilir. Emaar, projenin uygulanması sırasında teknik açıdan gerekli gördüğü değişiklikleri yapma hakkına sahiptir.

The sample layouts may differ according to the floor or block infrastructures where the circle is placed. Emaar is within right to do any changes or adjustments to the layout, if any arise due to technical necessities in the implementation of the project.

HEIGHTS
Penthouse / 733.74 m²

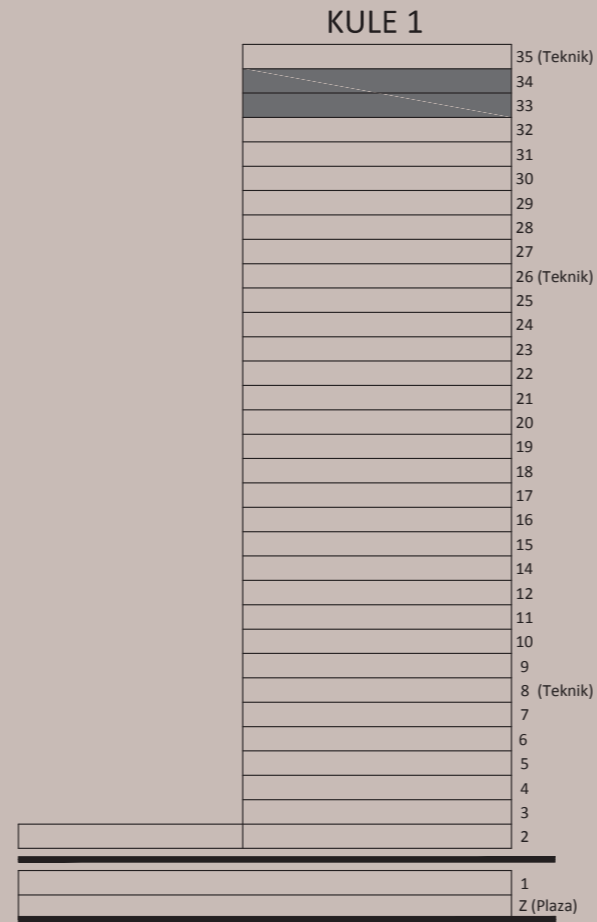




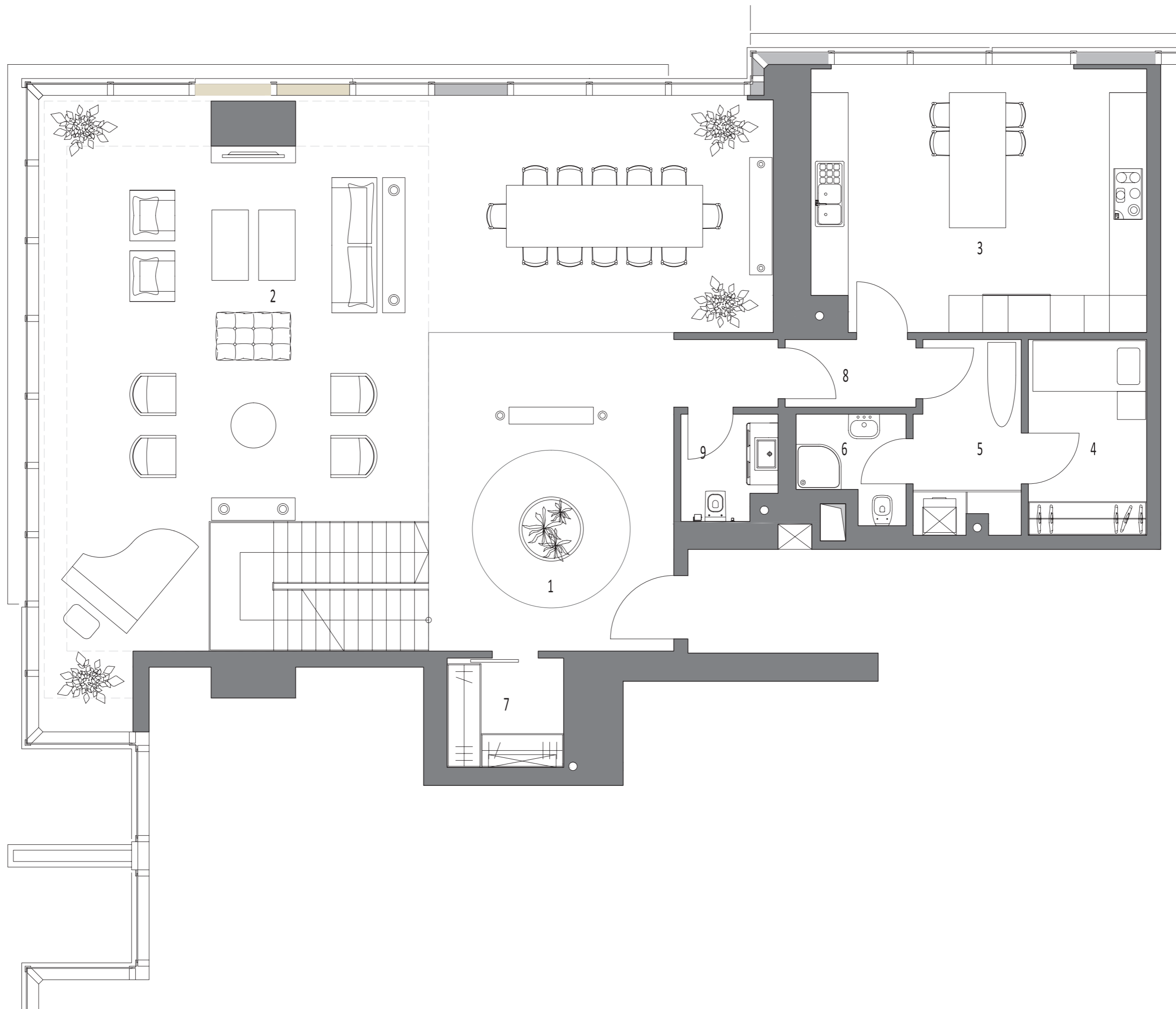
PENTHOUSE 2 ALT / LOWER

1. Giriş holü / Entry: A: 27.03 m²
2. Salon / Living room: A: 96.37 m²
3. Mutfak / Kitchen: A: 27.78 m²
4. Hizmetli odası / Maid's room: A: 7.30 m²
5. Çamaşır Odası / Laundry: A: 6.50 m²
6. Hizmetli banyo /
Maid's bathroom A: 3.15m²
7. Vestiyer / Cloak room: A: 4.11m²
8. Hol / Hall: A: 3.01 m²
9. Misafir WC / Powder room: A: 3.04m²

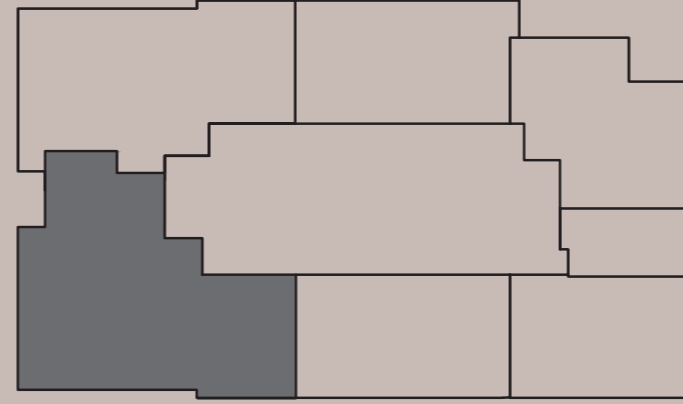
Net alan / Net area: 178.29 m²



HEIGHTS
Penthouse



EMAAR
SQUARE



PENTHOUSE 2 ÜST / UPPER

10. Oturma odası / Family room: A: 17.97 m²
11. Misafir odası / Guest room: A: 18.68 m²
12. Misafir banyo/
Guest bathroom: A: 5.66 m²
13. Misafir WC / Powder room: A: 3.12 m²
14. Mini mutfak / Kitchenette: A: 4.79 m²
15. Hol / Hall: A: 3.51 m²
16. Banyo / Bathroom A: 4.89 m²
17. E. Banyo / Master bathroom A: 11.05 m²
18. Soyunma odası /
Walk in closet A: 15.65 m²
19. Ebeveyn yatak odası /
Master suite A: 19.09 m²
20. Yatak odası 1 / Bedroom 1 A: 12.36 m²
21. Yatak odası 2 / Bedroom 2 A: 12.09 m²
22. Hol / Hall: A: 8.43 m²

Net alan / Net area: 137.29 m²

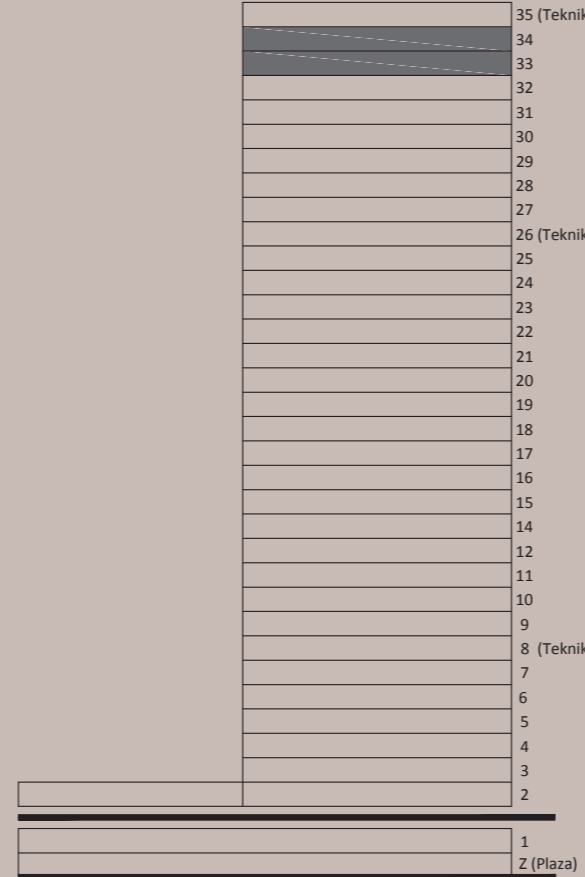
Galeri alanı / Gallery area: 70.71 m²

Toplam net alan / Total net area: 315.58 m²

Toplam brüt alan / Total gross area: 548.60 m²

EMAAR
SQUARE

KULE 1



Örnek planlar dairenin projede bulunduğu blok ve kata göre alt yapıdan kaynaklanan farklılıklar gösterebilir. Emaar, projenin uygulanması sırasında teknik açıdan gerekli gördüğü değişiklikleri yapma hakkına sahiptir.

The sample layouts may differ according to the floor or block infrastructures where the circle is placed. Emaar is within right to do any changes or adjustments to the layout, if any arise due to technical necessities in the implementation of the project.

HEIGHTS

Penthouse / 548.60 m²

