

رؤيا كاشف
REFLECTION

CAPITAL LIVING ON REEM

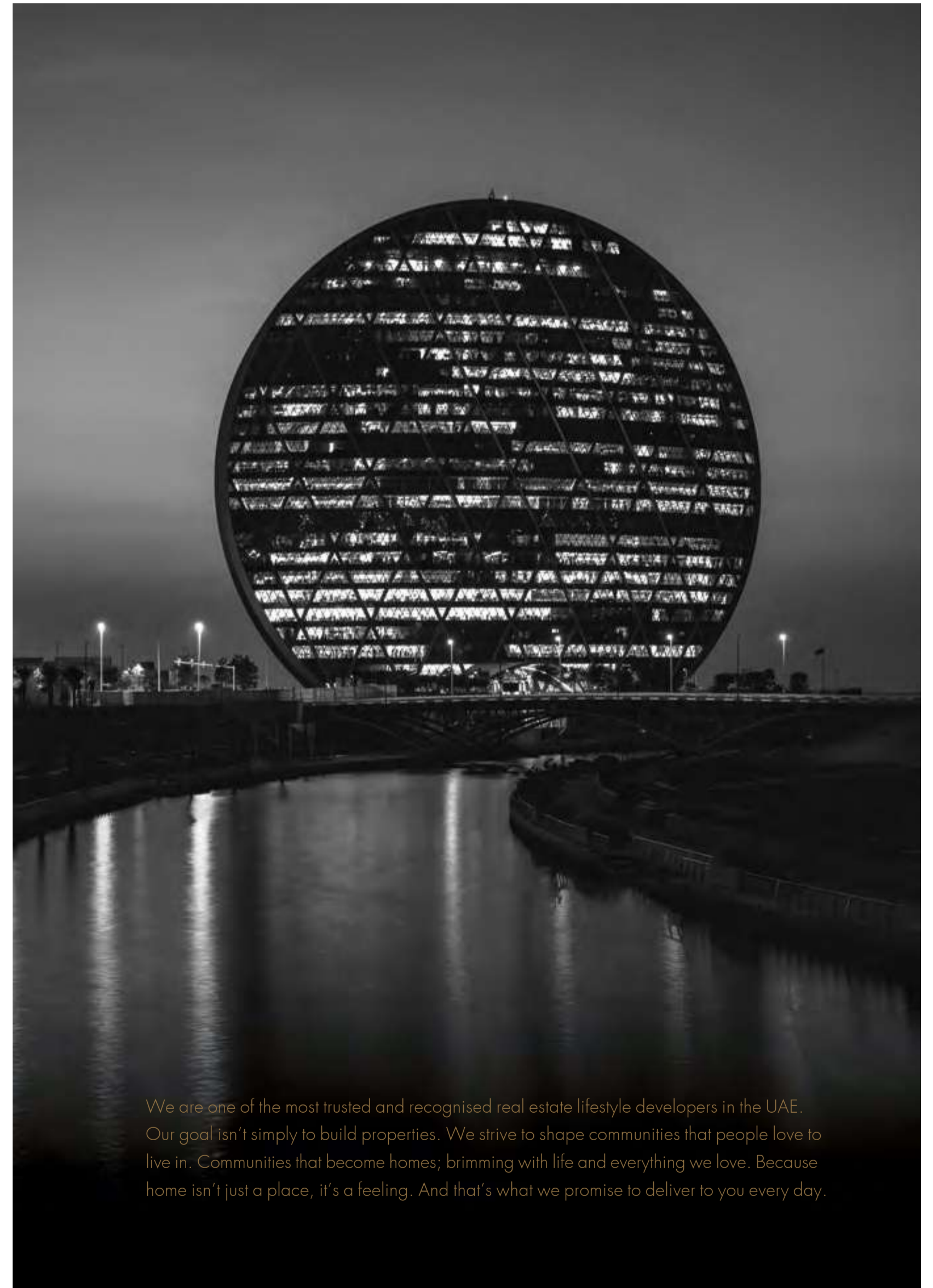


ABU DHABI

Abu Dhabi, the capital of the UAE, has become home to people from all over the world who are drawn to its natural beauty, vibrant culture, inspiring heritage and dynamic business landscape.

ALDAR

EVERYTHING
WE DO
COMES FROM
THE HEART

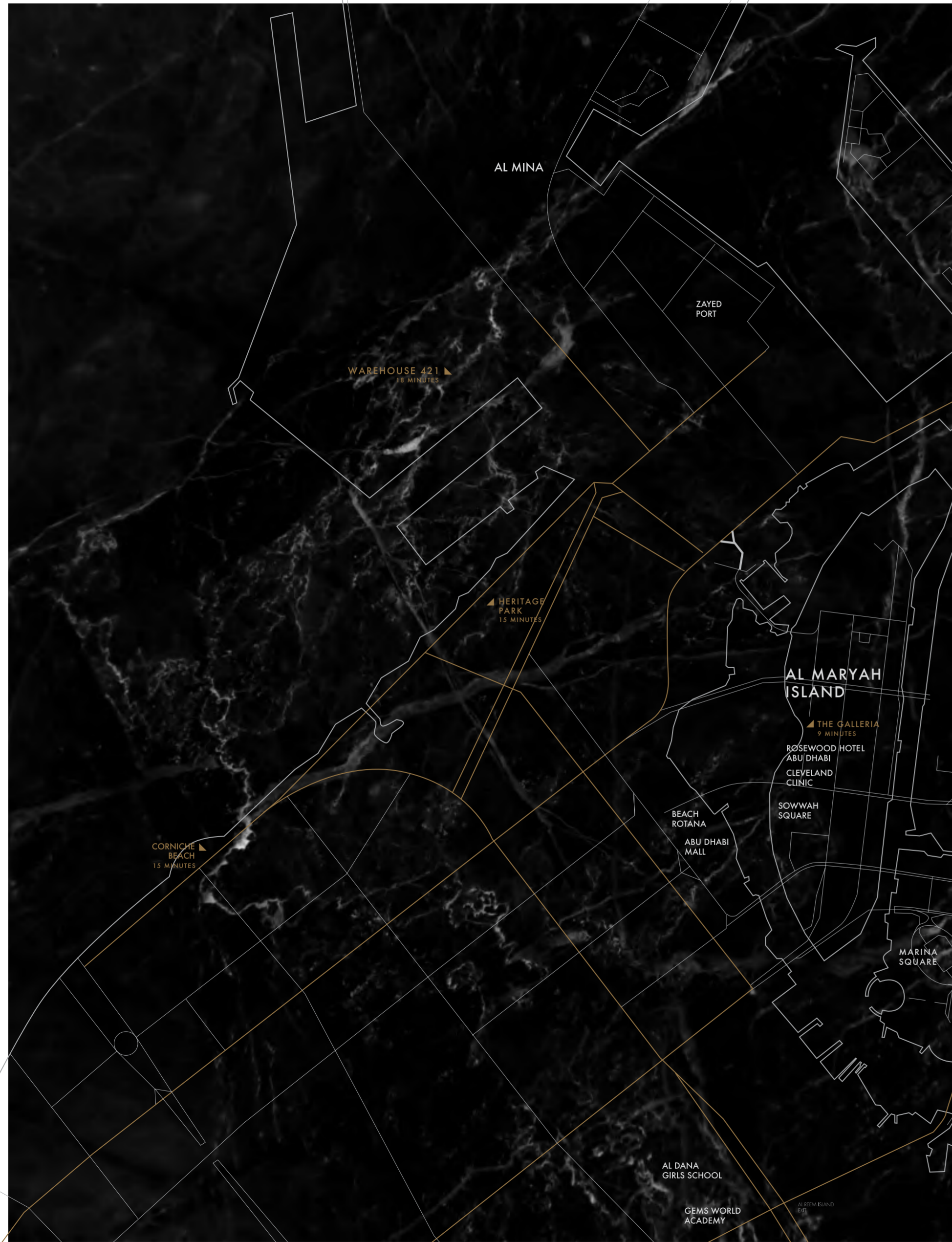


We are one of the most trusted and recognised real estate lifestyle developers in the UAE. Our goal isn't simply to build properties. We strive to shape communities that people love to live in. Communities that become homes; brimming with life and everything we love. Because home isn't just a place, it's a feeling. And that's what we promise to deliver to you every day.

W E L C O M E
T O
C A P I T A L
L I V I N G
O N R E E M

Answer the call of the sea and the city, from the new heart of the capital. Reem Island offers a fulfilling cosmopolitan lifestyle, with a bounty of dining outlets, cafes, malls, beaches, schools and more. The natural island is also surrounded by the cultural and financial centres of Saadiyat and Al Maryah Islands respectively, while being minutes away from downtown Abu Dhabi.





BUILT WITH
CHARACTER

A double take on urban style and elegance, this central destination redefines home with a modern edge. The two towers mirror each other with elegant facades that make a bold statement on the skyline. From smart studios to sophisticated three bedroom apartments, every property delivers a fresh take on the art of capital living, with balconies that look out over the sea and mangroves, park or city skyline.



S P A C E
T O
R E F L E C T





Between the two towers, a tailored urban park sets the scene for picnics, barbecues and outdoor fitness. The park will also be overlooked by a selection of cafes, coffee shops and amenities. Five floors up in each tower, a podium level houses a state-of-the-art gym and relaxing infinity pool with views over the park below. Just a short walk away are Gate Towers, Shams Boutik, the beach and Reem Central Park.



THE
BIGGER
PICTURE



Together, the towers will consist of 374 stylish apartments, each offering a unique view of Reem Island.



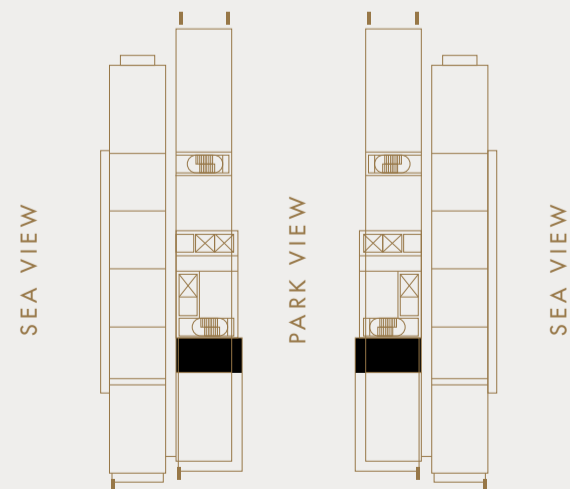


STUDIO

TYPE

A

Apartment area : 37 m²
Balcony area : 7 m²

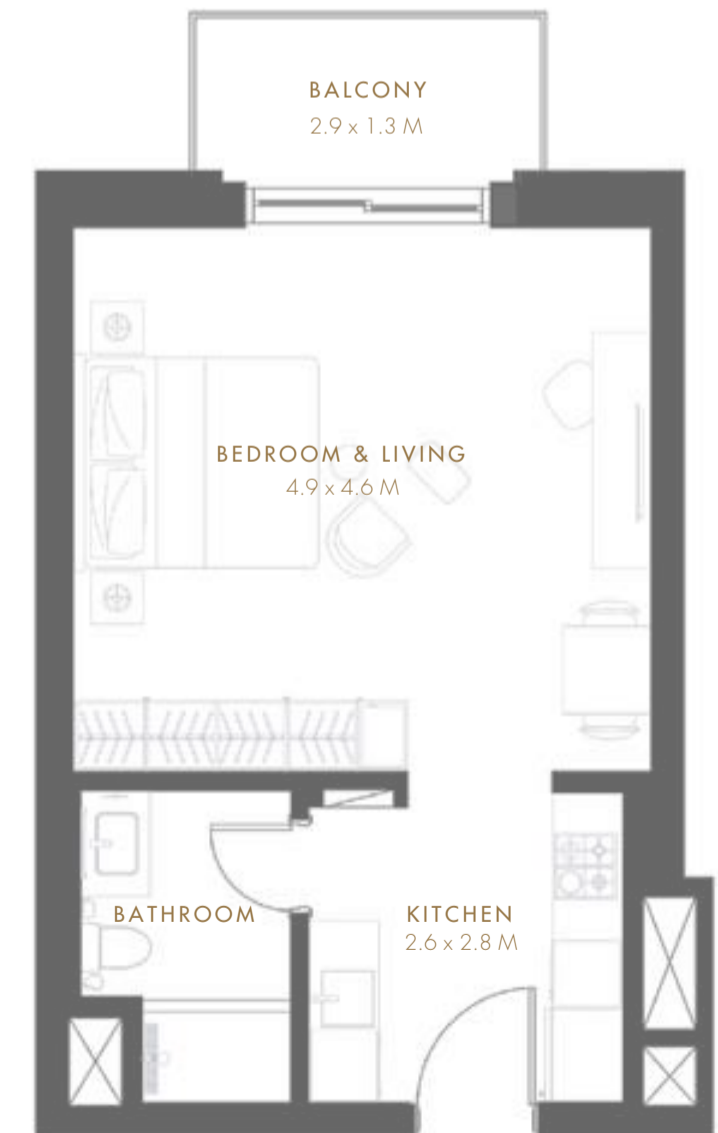
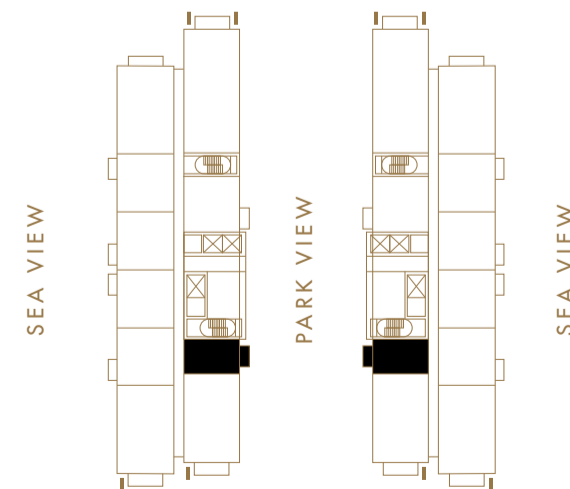


STUDIO

TYPE

B

Apartment area : 37 m²
Balcony area : 5 m²



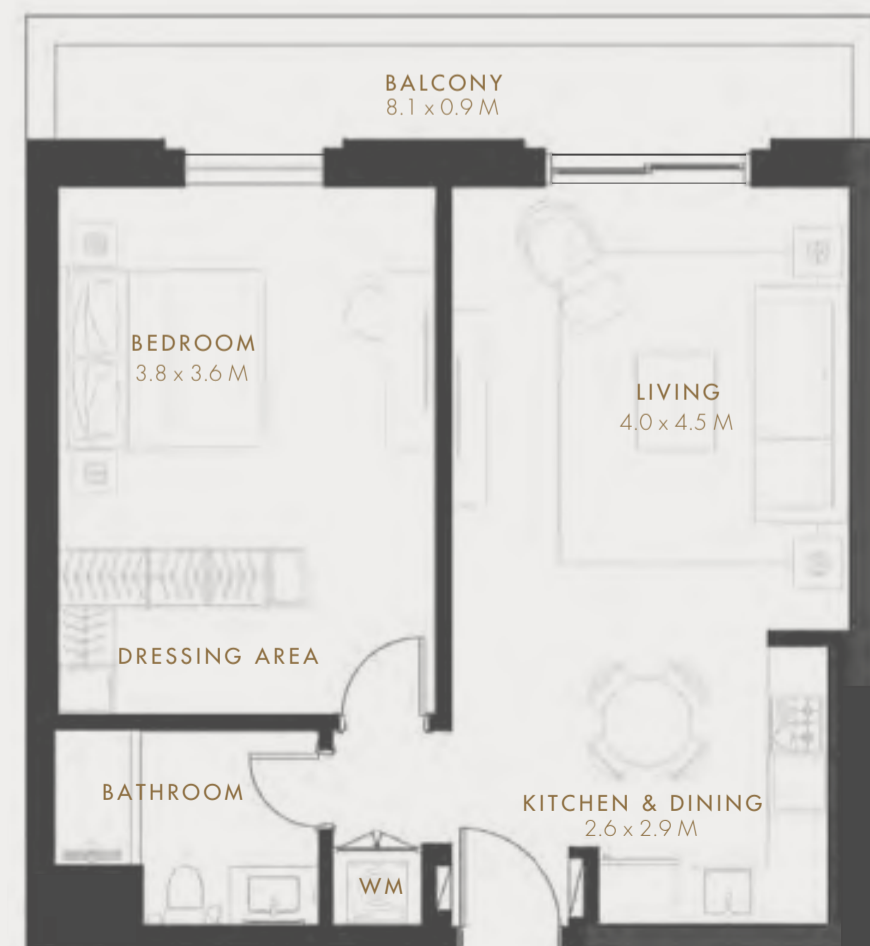
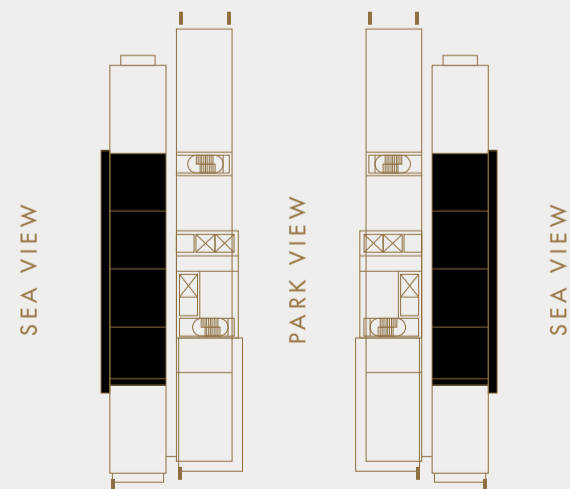
Disclaimer: Note that this floor plan was produced prior to the completion of construction and is indicative only and not to scale. Changes may be made during the development and areas, fittings, finishes and specifications are subject to change without notice in accordance with the provision of the Contract of Sale. The furniture depicted is not included with any sale and should not be taken to indicate the final positions of power points, TV connections etc. Prospective purchasers must rely on their own enquiries from time to time. Bulkheads necessary for services and structure are not depicted.

ONE BEDROOM

TYPE

A

Apartment area : 60 m²
Balcony area : 11 m²

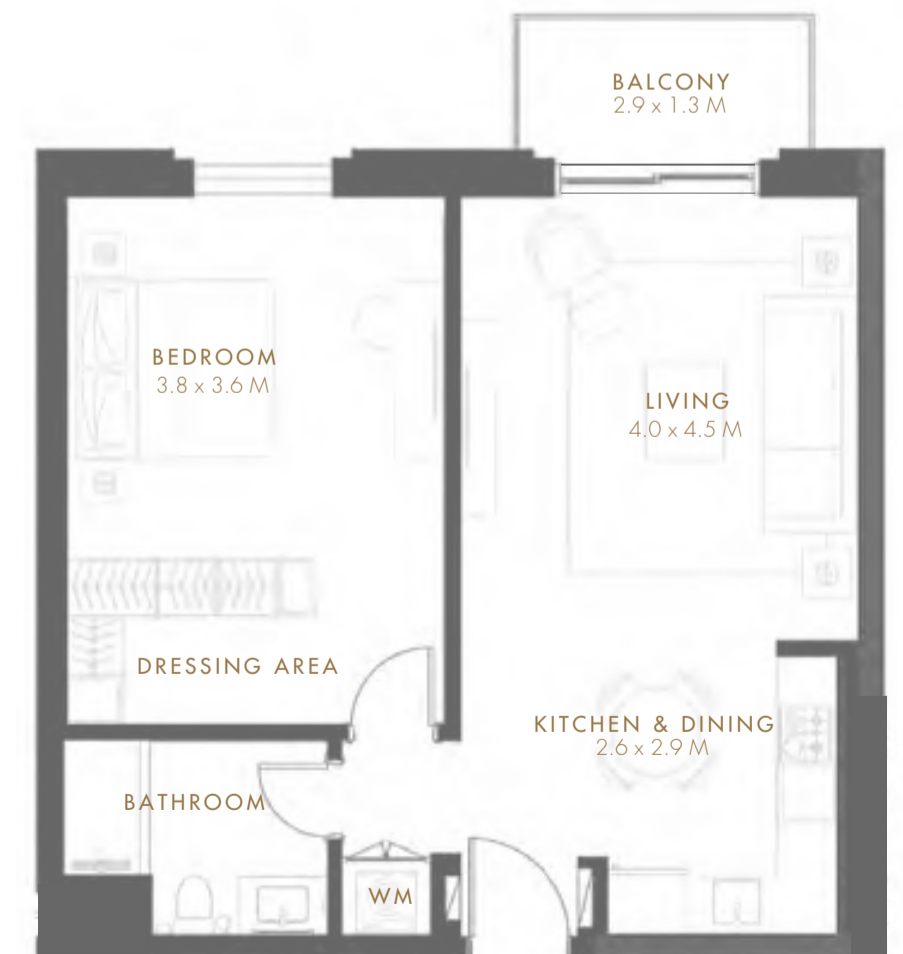
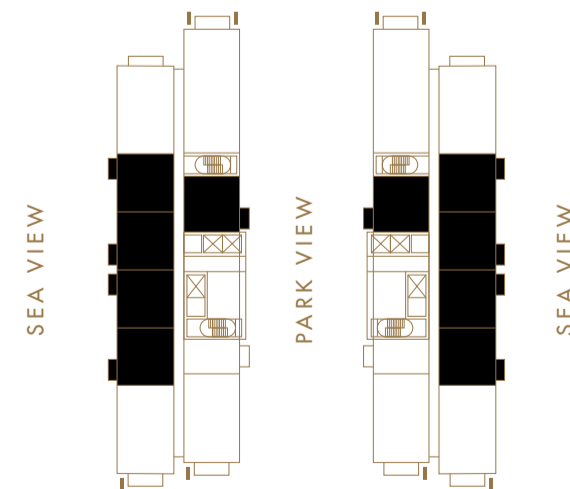


ONE BEDROOM

TYPE

B

Apartment area : 60 m²
Balcony area : 5 m²



Disclaimer: Note that this floor plan was produced prior to the completion of construction and is indicative only and not to scale. Changes may be made during the development and areas, fittings, finishes and specifications are subject to change without notice in accordance with the provision of the Contract of Sale. The furniture depicted is not included with any sale and should not be taken to indicate the final positions of power points, TV connections etc. Prospective purchasers must rely on their own enquiries from time to time. Bulkheads necessary for services and structure are not depicted.

TWO BEDROOM

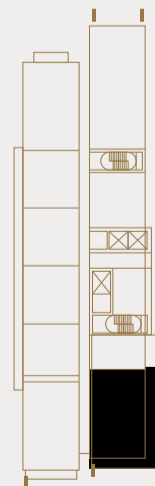
TYPE

A

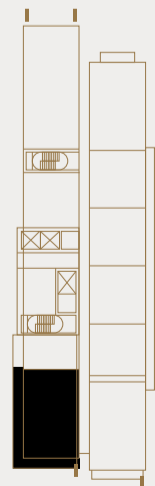
Apartment area : 91 m²
Balcony area : 38 m²



SEA VIEW



PARK VIEW



SEA VIEW

TWO BEDROOM

TYPE

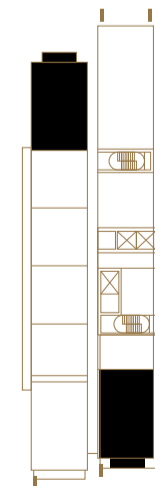
B

Apartment area : 91 m²
Balcony area : 8 m²

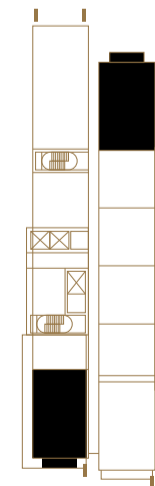
Disclaimer: Note that this floor plan was produced prior to the completion of construction and is indicative only and not to scale. Changes may be made during the development and areas, fittings, finishes and specifications are subject to change without notice in accordance with the provision of the Contract of Sale. The furniture depicted is not included with any sale and should not be taken to indicate the final positions of power points, TV connections etc. Prospective purchasers must rely on their own enquiries from time to time. Bulkheads necessary for services and structure are not depicted.



SEA VIEW



PARK VIEW



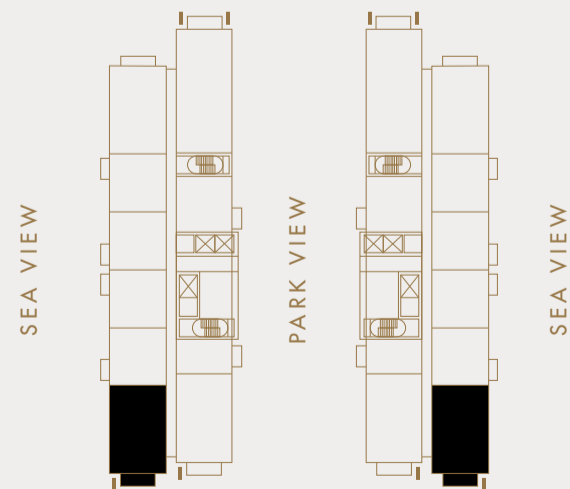
SEA VIEW

TWO BEDROOM

TYPE

B 1

Apartment area : 92 m²
Balcony area : 11 m²

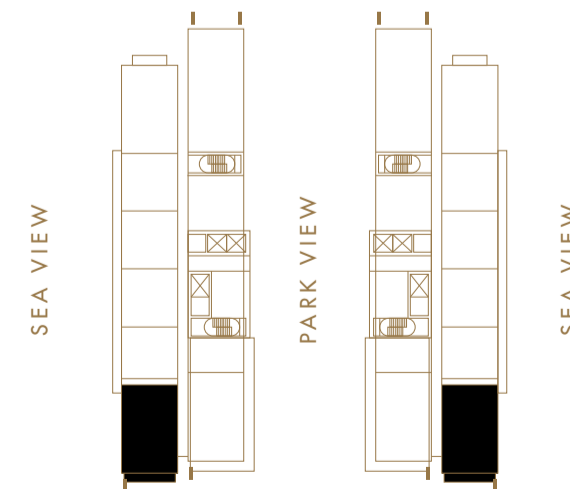


TWO BEDROOM

TYPE

B 1 A

Apartment area : 91 m²
Balcony area : 17 m²



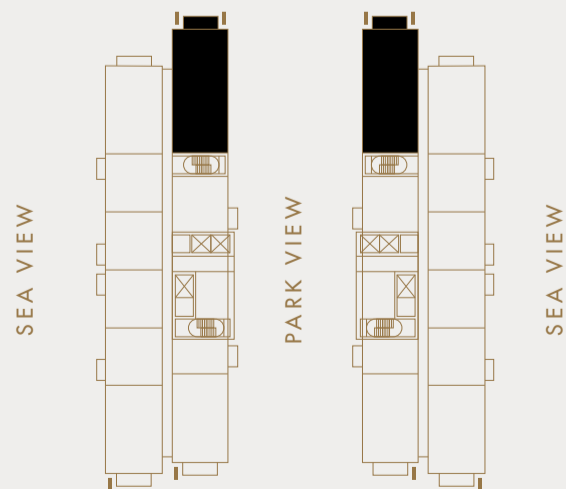
Disclaimer: Note that this floor plan was produced prior to the completion of construction and is indicative only and not to scale. Changes may be made during the development and areas, fittings, finishes and specifications are subject to change without notice in accordance with the provision of the Contract of Sale. The furniture depicted is not included with any sale and should not be taken to indicate the final positions of power points, TV connections etc. Prospective purchasers must rely on their own enquiries from time to time. Bulkheads necessary for services and structure are not depicted.

THREE BEDROOM

TYPE

A

Apartment area : 131 m²
Balcony area : 11 m²



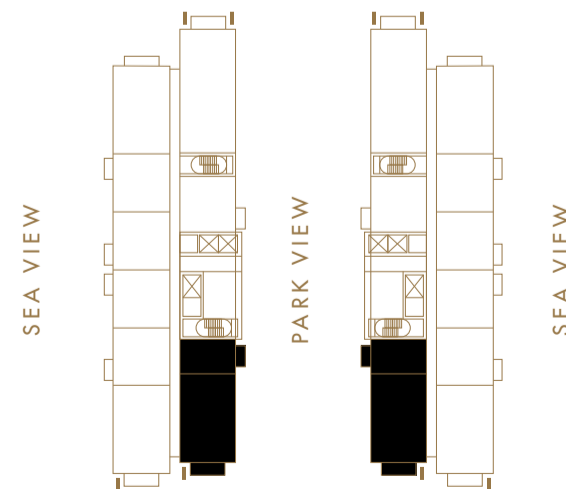
THREE BEDROOM

TYPE

B

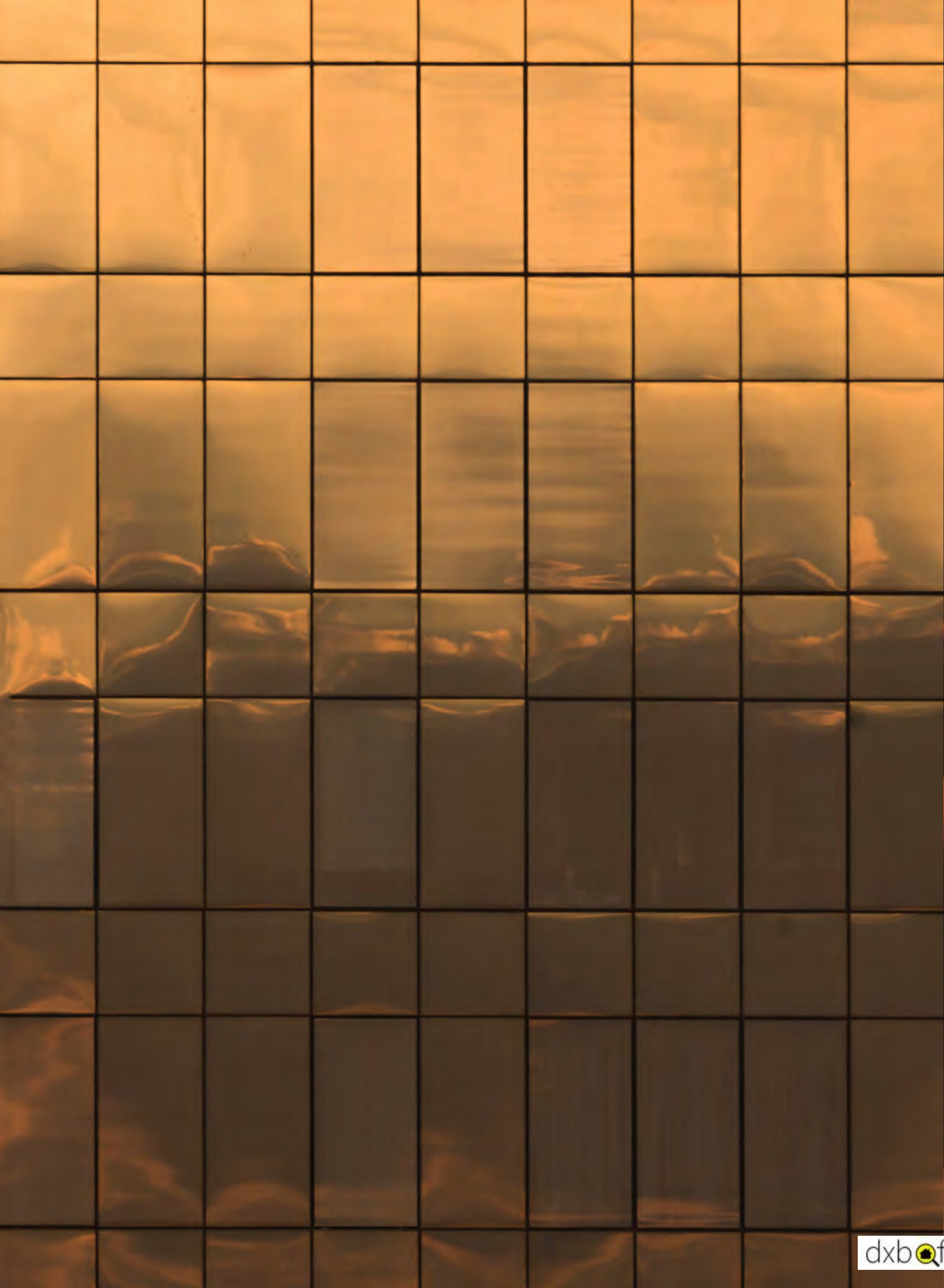
Apartment area : 130m²
Balcony area : 16 m²

Disclaimer: Note that this floor plan was produced prior to the completion of construction and is indicative only and not to scale. Changes may be made during the development and areas, fittings, finishes and specifications are subject to change without notice in accordance with the provision of the Contract of Sale. The furniture depicted is not included with any sale and should not be taken to indicate the final positions of power points, TV connections etc. Prospective purchasers must rely on their own enquiries from time to time. Bulkheads necessary for services and structure are not depicted.













REEM
CENTRAL
PARK





This contemporary park at the heart of Reem Island puts 1 million sq. ft. of leisure in your backyard. With something for everyone – including gardens, a skate park, an adventure trail, a mosque, a beach and a selection of restaurants – this park isn't just where the capital comes together, it's the space where the city reinvents itself.

ABOUT TOWN



LOUVRE ABU DHABI

Saadiyat Island - The first museum of its kind in the Arab world. Walk beneath 8,000 metal stars, and see shared stories of humanity in a whole new light.



BUTCHER & STILL

Four Seasons, Al Maryah Island - Find yourself transported to a 1920's Chicago steakhouse, with prime cuts straight from the USA.



DRAGON'S TOOTH BAR @DAI PAI DONG

Rosewood Hotel, Al Maryah Island - Welcome to Al Maryah's best kept secret. Inspired by 1920's Shanghai, this speakeasy bar promises an evening of cool elegance.



WAREHOUSE 421

Mina Zayed, Next to Mina Centre - The official hangout for Abu Dhabi's creative community. Enjoy the seasonal events or simply admire the art on display..



ZUMA

Sowwah Square, Al Maryah Island
At the top of the fine-dining scene.
The name says it all.



THE COBBLER

Galleria Mall, Al Maryah Island
Shoes make the man. A premium
cobbler for the sartorially-savvy.

99 SUSHI BAR

Galleria Mall, Al Maryah Island
Haute Japanese cuisine that
oozes international glamour.



ZAYA NURAI ISLAND

10 minutes boat ride from Saadiyat Island
Your own slice of paradise awaits you.





