



ADDRESS
RESIDENCES
JUMEIRAH
RESORT + SPA

ONE-BEDROOM SERVICED APARTMENT - TYPE S1A

LEVELS: 18 to 41, 43 to 72



SELLABLE AREA

	SQ.M	SQ.FT
SUITE AREA	57	611 - 615
BALCONY AREA	08	89
TOTAL AREA	65	700 - 705

Disclaimer: 1. All materials, dimensions and drawings are approximate. 2. Information is subject to change without notice.
3. Actual suite area may vary from the stated area. 4. Drawings not to scale. 5. The developer reserves the right to make revisions/alterations without any liability whatsoever.



ADDRESS
RESIDENCES
JUMEIRAH
RESORT + SPA

ONE-BEDROOM SERVICED APARTMENT - TYPE S1C

LEVELS: 18 to 41, 43 to 62



SELLABLE AREA

	SQ.M	SQ.FT
SUITE AREA	59	637 - 640
TOTAL AREA	59	637 - 640

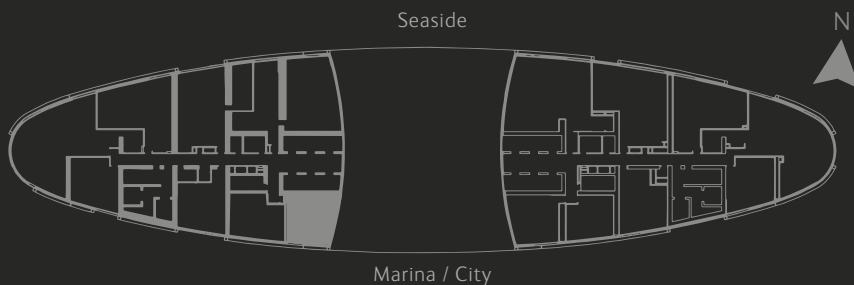
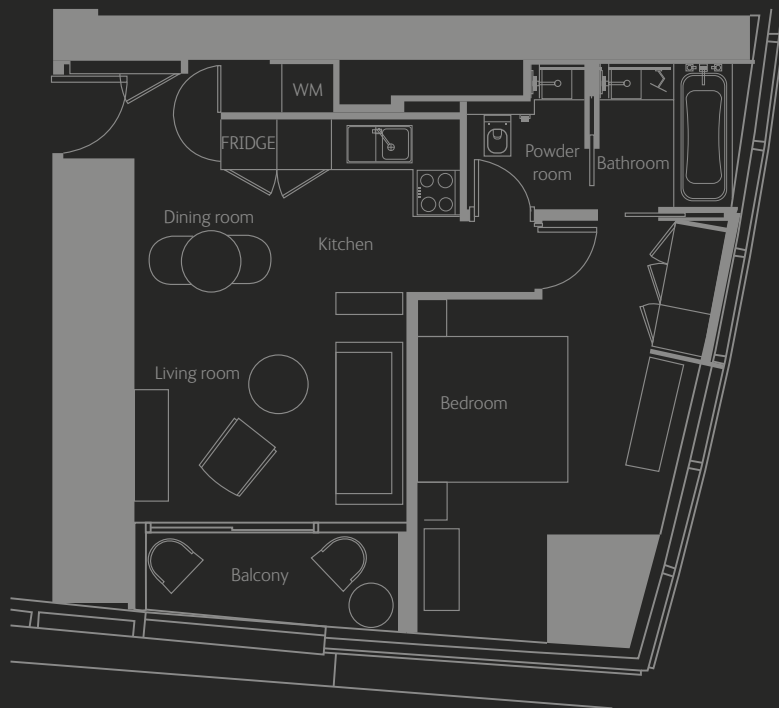
Disclaimer: 1. All materials, dimensions and drawings are approximate. 2. Information is subject to change without notice. 3. Actual suite area may vary from the stated area. 4. Drawings not to scale. 5. The developer reserves the right to make revisions/alterations without any liability whatsoever.



ADDRESS
RESIDENCES
JUMEIRAH
RESORT + SPA

ONE-BEDROOM SERVICED APARTMENT - TYPE S1D

LEVELS: 18 to 41, 43 to 62



SELLABLE AREA

	SQ.M	SQ.FT
SUITE AREA	64 - 65	694 - 703
BALCONY AREA	7	71 - 73
TOTAL AREA	71 - 72	765 - 775

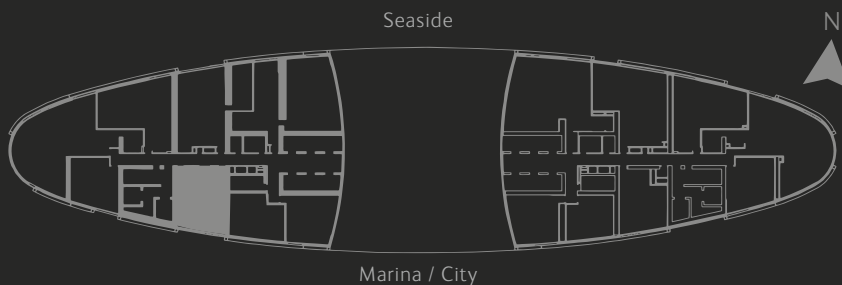
Disclaimer: 1. All materials, dimensions and drawings are approximate. 2. Information is subject to change without notice.
3. Actual suite area may vary from the stated area. 4. Drawings not to scale. 5. The developer reserves the right to make revisions/alterations without any liability whatsoever.



ADDRESS RESIDENCES JUMEIRAH RESORT + SPA

ONE-BEDROOM SERVICED APARTMENT - TYPE S1F

LEVELS: 18 to 41, 43 to 72



SELLABLE AREA

	SQ.M	SQ.FT
SUITE AREA	68 - 75	717 - 808
BALCONY AREA	0 - 7	0 - 78
TOTAL AREA	75	795 - 808

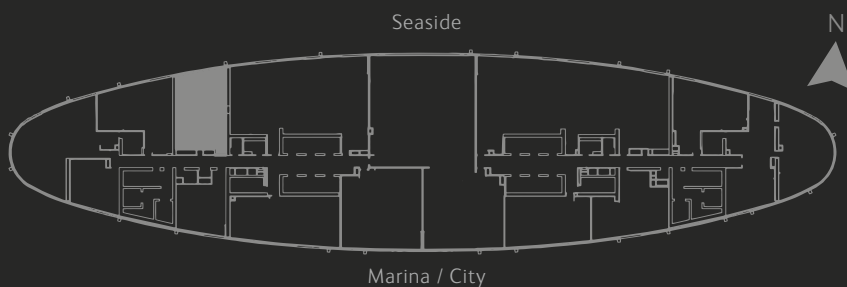
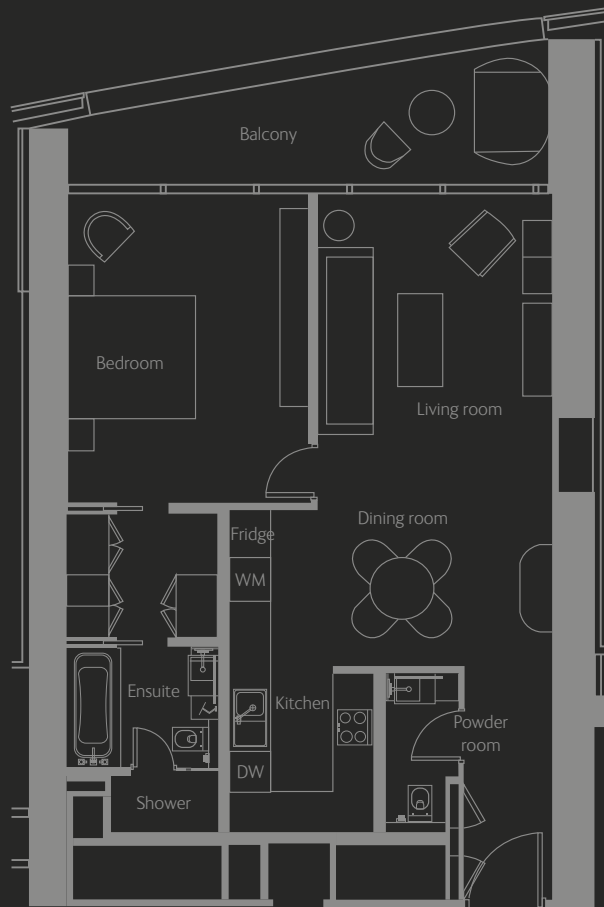
Disclaimer: 1. All materials, dimensions and drawings are approximate. 2. Information is subject to change without notice. 3. Actual suite area may vary from the stated area. 4. Drawings not to scale. 5. The developer reserves the right to make revisions/alterations without any liability whatsoever.



ADDRESS
RESIDENCES
JUMEIRAH
RESORT + SPA

ONE-BEDROOM SERVICED APARTMENT - TYPE S1G

LEVELS: 68 to 72



SELLABLE AREA

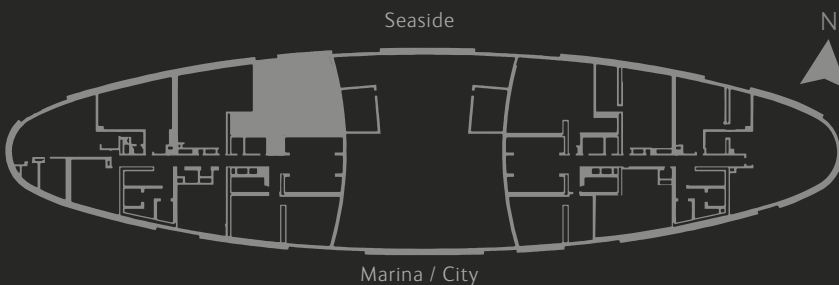
	SQ.M	SQ.FT
SUITE AREA	91	980
BALCONY AREA	16	176
TOTAL AREA	107	1155

Disclaimer: 1. All materials, dimensions and drawings are approximate. 2. Information is subject to change without notice.
3. Actual suite area may vary from the stated area. 4. Drawings not to scale. 5. The developer reserves the right to make revisions/alterations without any liability whatsoever.



ADDRESS
RESIDENCES
JUMEIRAH
RESORT + SPA

TWO-BEDROOM SERVICED APARTMENT - TYPE S2A
LEVEL: 63



SELLABLE AREA

	SQ.M	SQ.FT
SUITE AREA	163	1759
BALCONY AREA	21	221
TOTAL AREA	184	1981

Disclaimer: 1. All materials, dimensions and drawings are approximate. 2. Information is subject to change without notice.
3. Actual suite area may vary from the stated area. 4. Drawings not to scale. 5. The developer reserves the right to make
revisions/alterations without any liability whatsoever.



ADDRESS
RESIDENCES
JUMEIRAH
RESORT + SPA

TWO-BEDROOM SERVICED APARTMENT - TYPE S2C

LEVELS: 18 to 41, 43 to 72



SELLABLE AREA

	SQ.M	SQ.FT
SUITE AREA	99 - 100	1066 - 1072
BALCONY AREA	10	106 - 109
TOTAL AREA	109 - 110	1171 - 1181

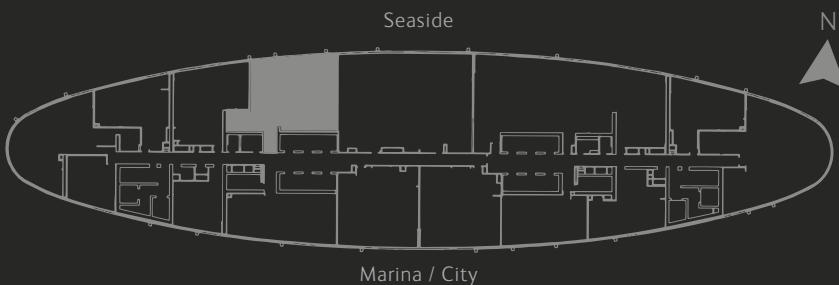
Disclaimer: 1. All materials, dimensions and drawings are approximate. 2. Information is subject to change without notice.
3. Actual suite area may vary from the stated area. 4. Drawings not to scale. 5. The developer reserves the right to make revisions/alterations without any liability whatsoever.



ADDRESS
RESIDENCES
JUMEIRAH
RESORT + SPA

TWO-BEDROOM SERVICED APARTMENT - TYPE S2D

LEVELS: 64 to 67



SELLABLE AREA

	SQ.M	SQ.FT
SUITE AREA	165	1777
BALCONY AREA	22	235
TOTAL AREA	187	2012

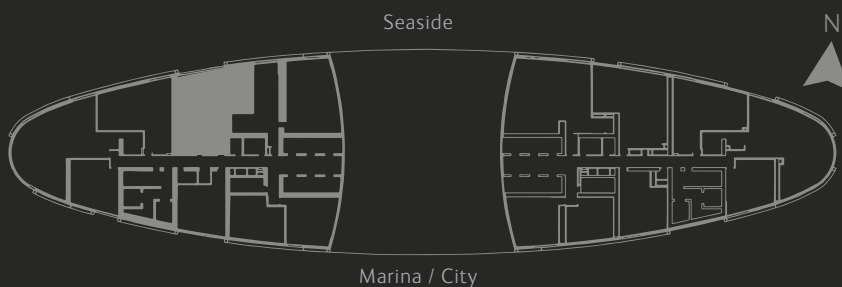
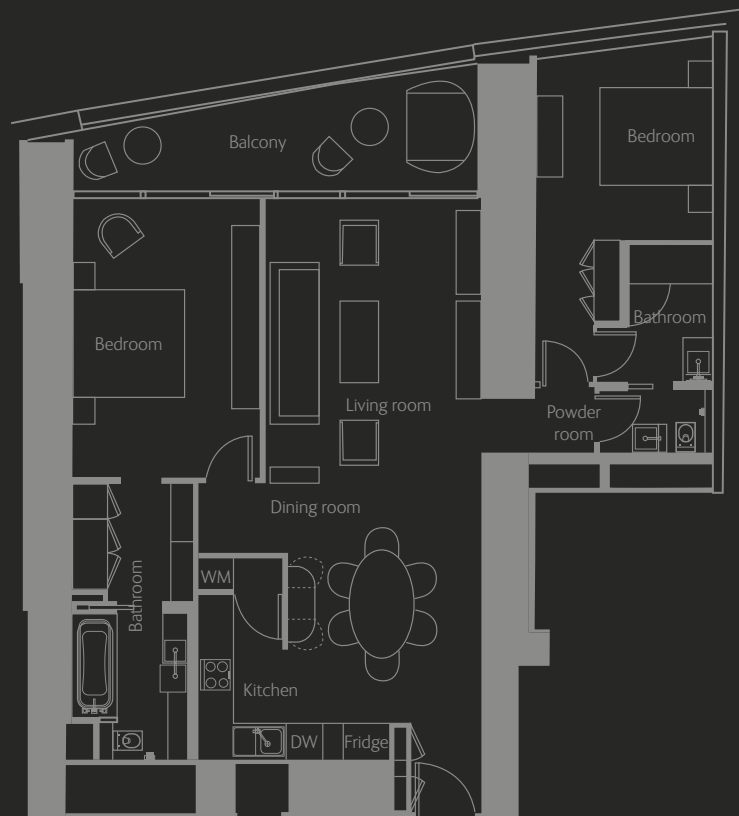
Disclaimer: 1. All materials, dimensions and drawings are approximate. 2. Information is subject to change without notice. 3. Actual suite area may vary from the stated area. 4. Drawings not to scale. 5. The developer reserves the right to make revisions/alterations without any liability whatsoever.



ADDRESS
RESIDENCES
JUMEIRAH
RESORT + SPA

TWO-BEDROOM SERVICED APARTMENT - TYPE S2E

LEVELS: 18 to 41, 43 to 67



SELLABLE AREA

	SQ.M	SQ.FT
SUITE AREA	123 - 124	1320 - 1330
BALCONY AREA	16 - 17	176 - 178
TOTAL AREA	139 - 140	1497 - 1505

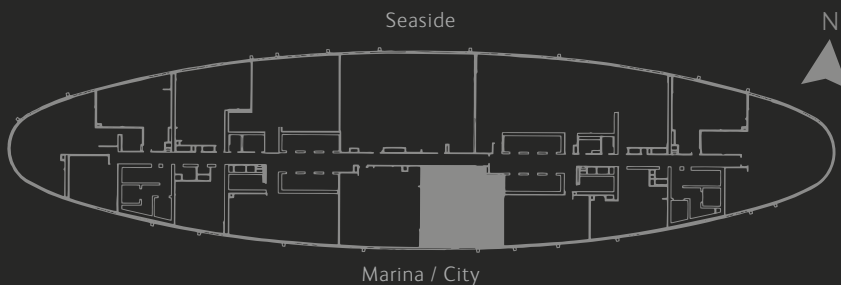
Disclaimer: 1. All materials, dimensions and drawings are approximate. 2. Information is subject to change without notice. 3. Actual suite area may vary from the stated area. 4. Drawings not to scale. 5. The developer reserves the right to make revisions/alterations without any liability whatsoever.



ADDRESS
RESIDENCES
JUMEIRAH
RESORT + SPA

TWO-BEDROOM SERVICED APARTMENT - TYPE S2J

LEVELS: 64 to 67



SELLABLE AREA

	SQ.M	SQ.FT
SUITE AREA	140	1507
BALCONY AREA	26	275
TOTAL AREA	166	1782

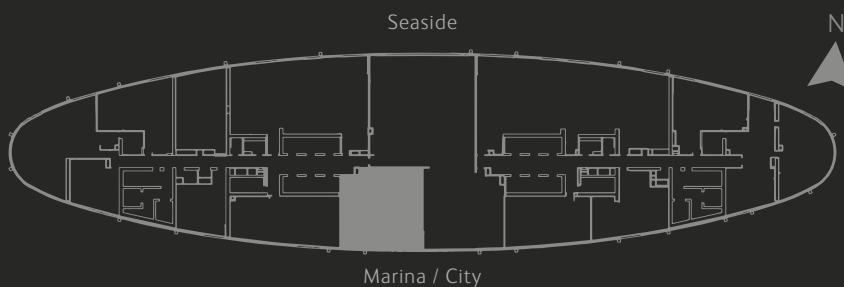
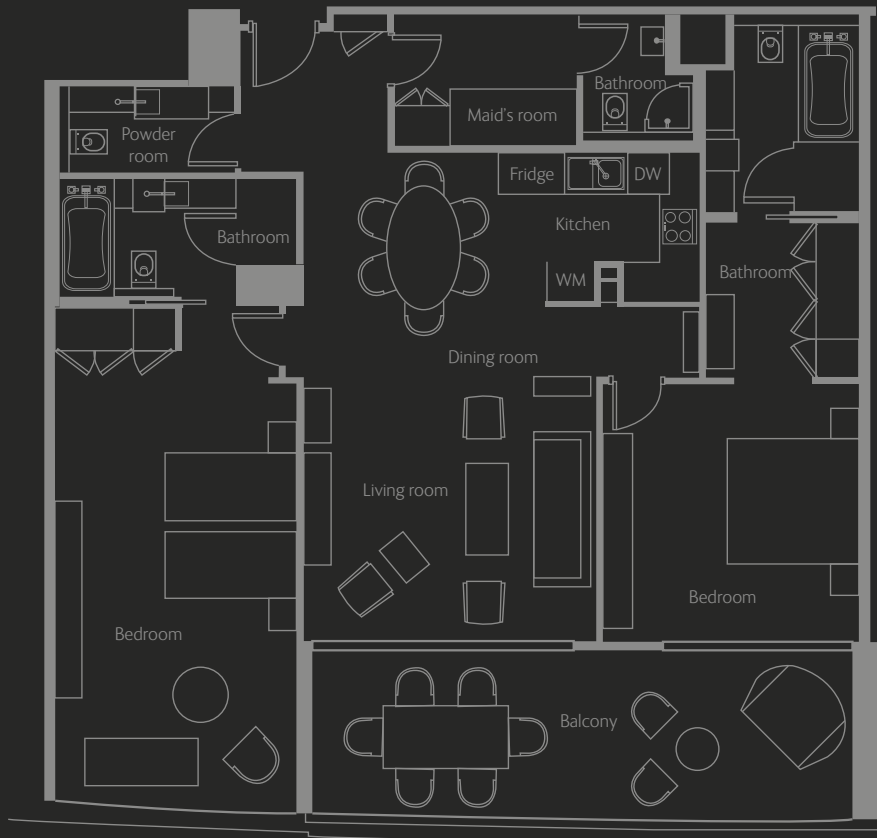
Disclaimer: 1. All materials, dimensions and drawings are approximate. 2. Information is subject to change without notice. 3. Actual suite area may vary from the stated area. 4. Drawings not to scale. 5. The developer reserves the right to make revisions/alterations without any liability whatsoever.



ADDRESS
RESIDENCES
JUMEIRAH
RESORT + SPA

TWO-BEDROOM SERVICED APARTMENT - TYPE S2K

LEVELS: 64 to 72



SELLABLE AREA

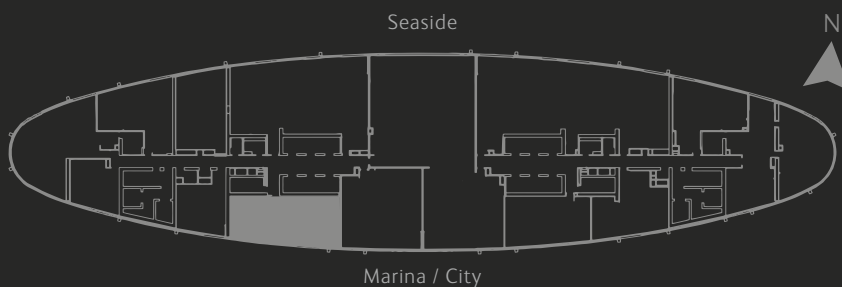
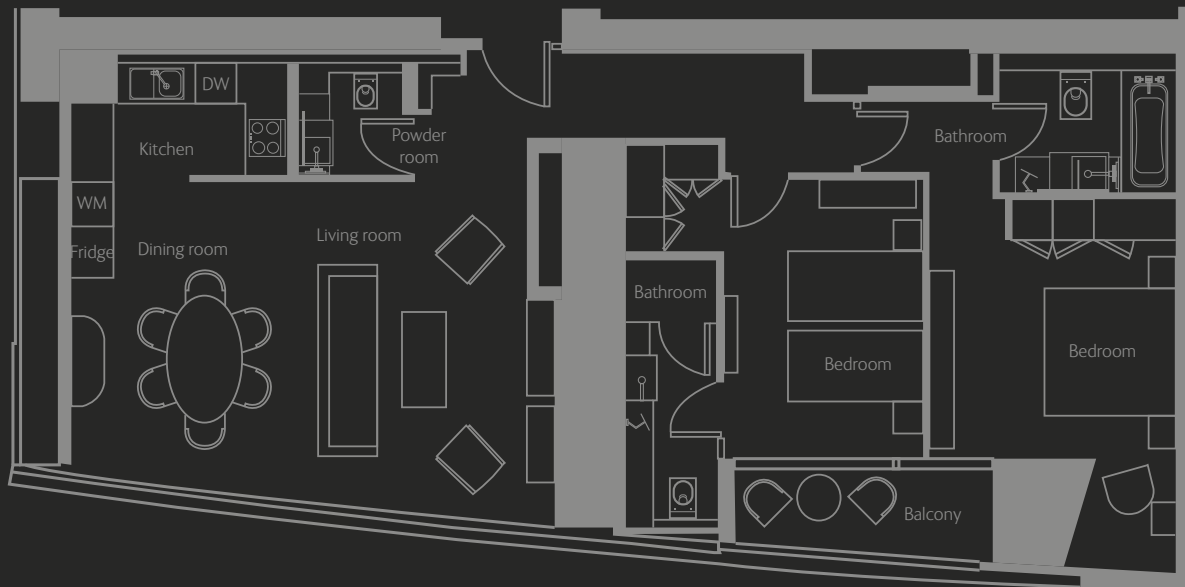
	SQ.M	SQ.FT
SUITE AREA	140	1507
BALCONY AREA	26	276 - 282
TOTAL AREA	166	1783 - 1789

Disclaimer: 1. All materials, dimensions and drawings are approximate. 2. Information is subject to change without notice.
3. Actual suite area may vary from the stated area. 4. Drawings not to scale. 5. The developer reserves the right to make revisions/alterations without any liability whatsoever.



ADDRESS
RESIDENCES
JUMEIRAH
RESORT + SPA

TWO-BEDROOM SERVICED APARTMENT - TYPE S2L
LEVELS: 64 to 72



SELLABLE AREA

	SQ.M	SQ.FT
SUITE AREA	133	1428 - 1434
BALCONY AREA	7	77
TOTAL AREA	140	1505 - 1511

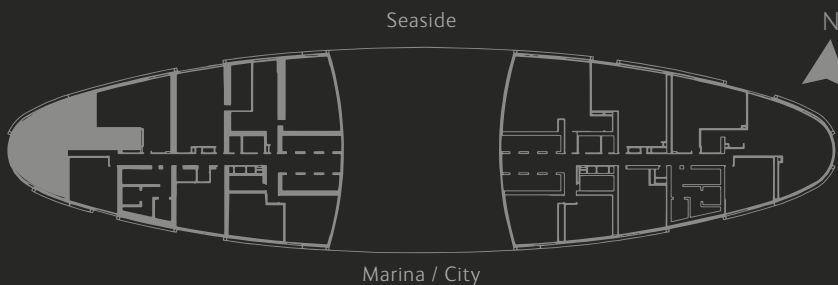
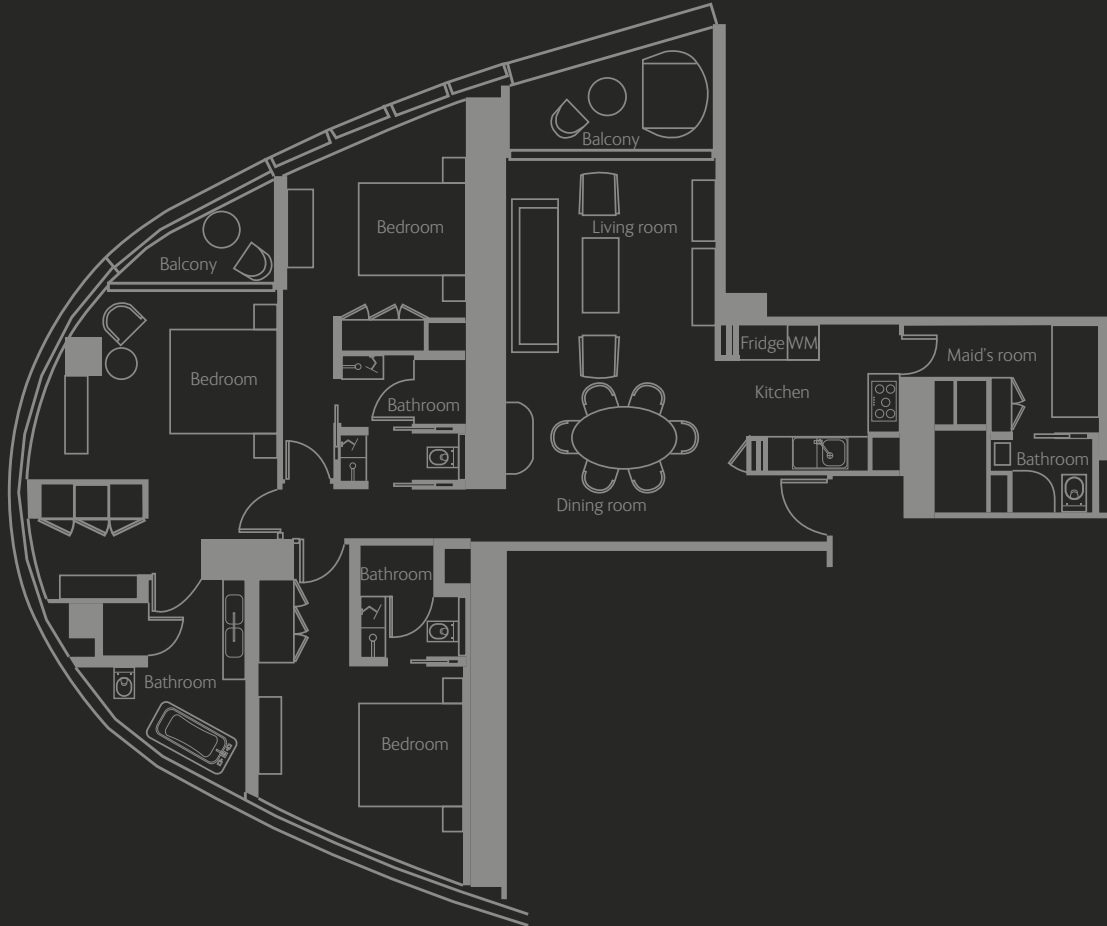
Disclaimer: 1. All materials, dimensions and drawings are approximate. 2. Information is subject to change without notice.
3. Actual suite area may vary from the stated area. 4. Drawings not to scale. 5. The developer reserves the right to make revisions/alterations without any liability whatsoever.



ADDRESS
RESIDENCES
JUMEIRAH
RESORT + SPA

THREE-BEDROOM SERVICED APARTMENT - TYPE S3A

LEVELS: 18 to 41, 43 to 72



SELLABLE AREA

	SQ.M	SQ.FT
SUITE AREA	162 - 163	1746 - 1757
BALCONY AREA	14	151 - 152
TOTAL AREA	176 - 177	1898 - 1908

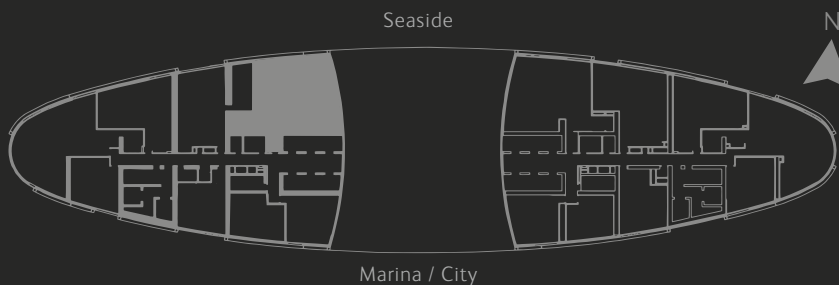
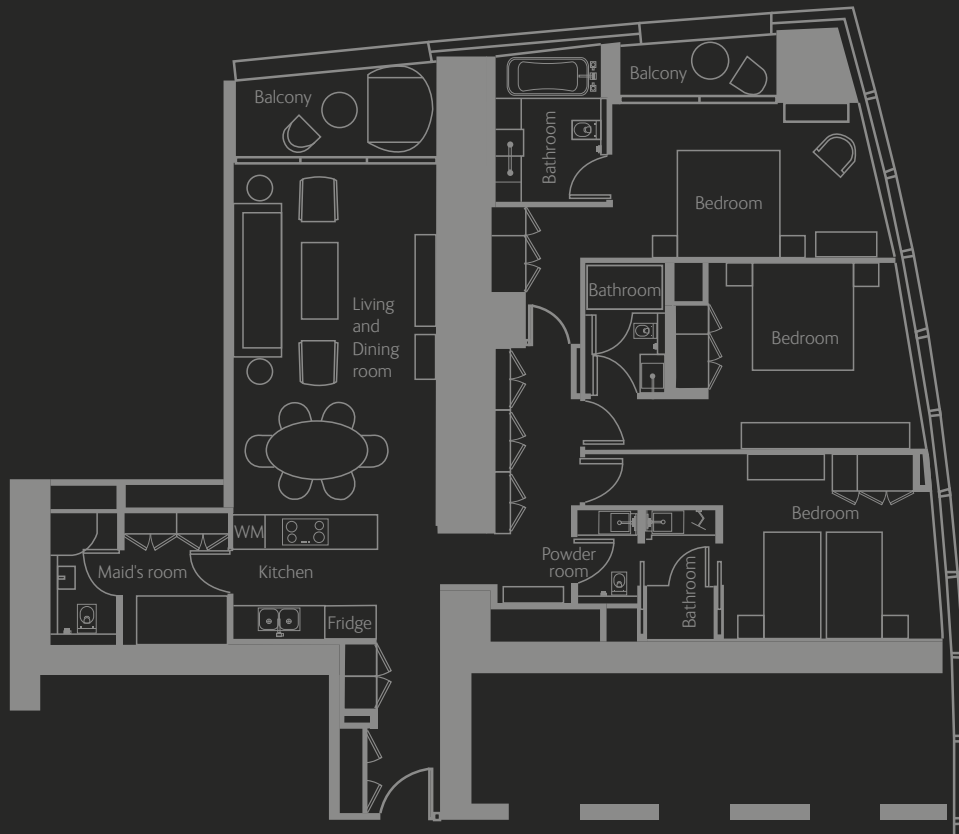
Disclaimer: 1. All materials, dimensions and drawings are approximate. 2. Information is subject to change without notice.
3. Actual suite area may vary from the stated area. 4. Drawings not to scale. 5. The developer reserves the right to make revisions/alterations without any liability whatsoever.



ADDRESS
RESIDENCES
JUMEIRAH
RESORT + SPA

THREE-BEDROOM SERVICED APARTMENT - TYPE S3B

LEVELS: 18 to 41, 43 to 62



SELLABLE AREA

	SQ.M	SQ.FT
SUITE AREA	166 - 167	1791 - 1796
BALCONY AREA	16 - 17	175 - 178
TOTAL AREA	183	1966 - 1973

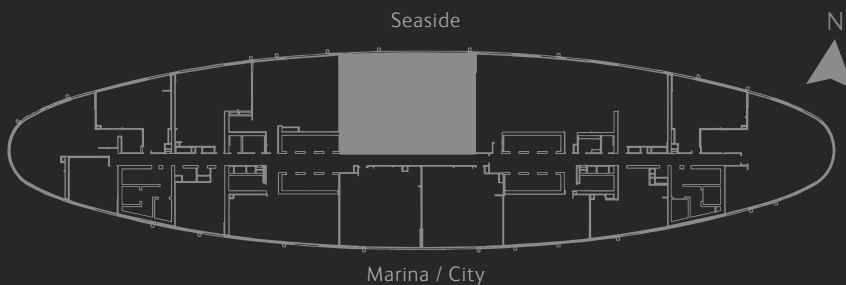
Disclaimer: 1. All materials, dimensions and drawings are approximate. 2. Information is subject to change without notice. 3. Actual suite area may vary from the stated area. 4. Drawings not to scale. 5. The developer reserves the right to make revisions/alterations without any liability whatsoever.



ADDRESS
RESIDENCES
JUMEIRAH
RESORT + SPA

FOUR-BEDROOM SERVICED APARTMENT - TYPE S4B

LEVELS: 64 to 67



SELLABLE AREA

	SQ.M	SQ.FT
SUITE AREA	256	2751
BALCONY AREA	83	890
TOTAL AREA	338	3641

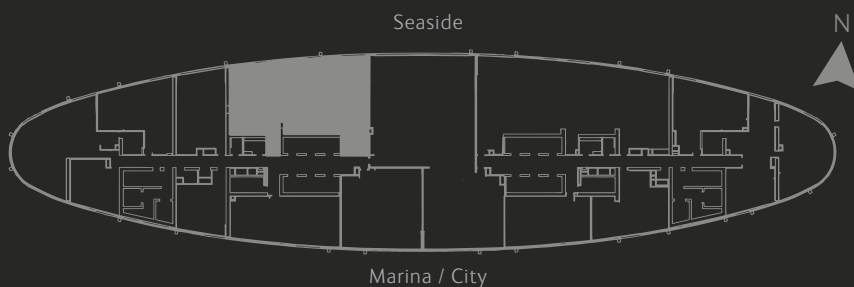
Disclaimer: 1. All materials, dimensions and drawings are approximate. 2. Information is subject to change without notice. 3. Actual suite area may vary from the stated area. 4. Drawings not to scale. 5. The developer reserves the right to make revisions/alterations without any liability whatsoever.



ADDRESS
RESIDENCES
JUMEIRAH
RESORT + SPA

FOUR-BEDROOM SERVICED APARTMENT - TYPE S4C

LEVELS: 68 to 72



SELLABLE AREA

	SQ.M	SQ.FT
SUITE AREA	259	2788
BALCONY AREA	32	340
TOTAL AREA	291	3128

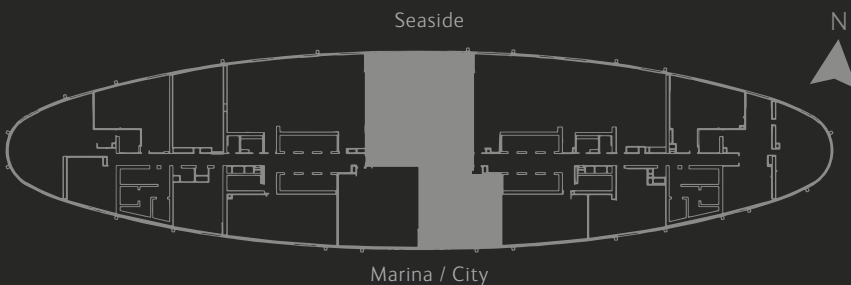
Disclaimer: 1. All materials, dimensions and drawings are approximate. 2. Information is subject to change without notice.
3. Actual suite area may vary from the stated area. 4. Drawings not to scale. 5. The developer reserves the right to make revisions/alterations without any liability whatsoever.



ADDRESS
RESIDENCES
JUMEIRAH
RESORT + SPA

FIVE-BEDROOM SERVICED APARTMENT - TYPE S5B

LEVELS: 68 to 72



SELLABLE AREA

	SQ.M	SQ.FT
SUITE AREA	367	3954
BALCONY AREA	99	1064
TOTAL AREA	466	5018

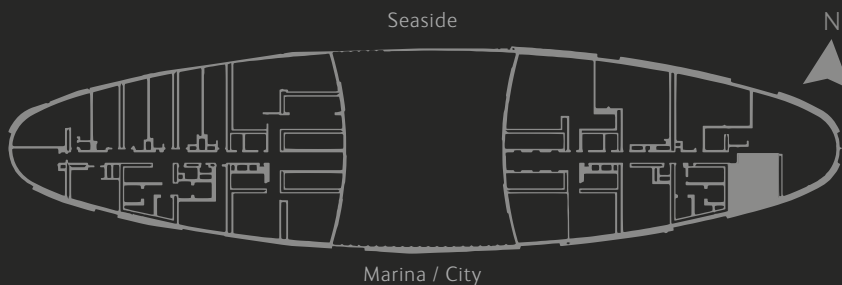
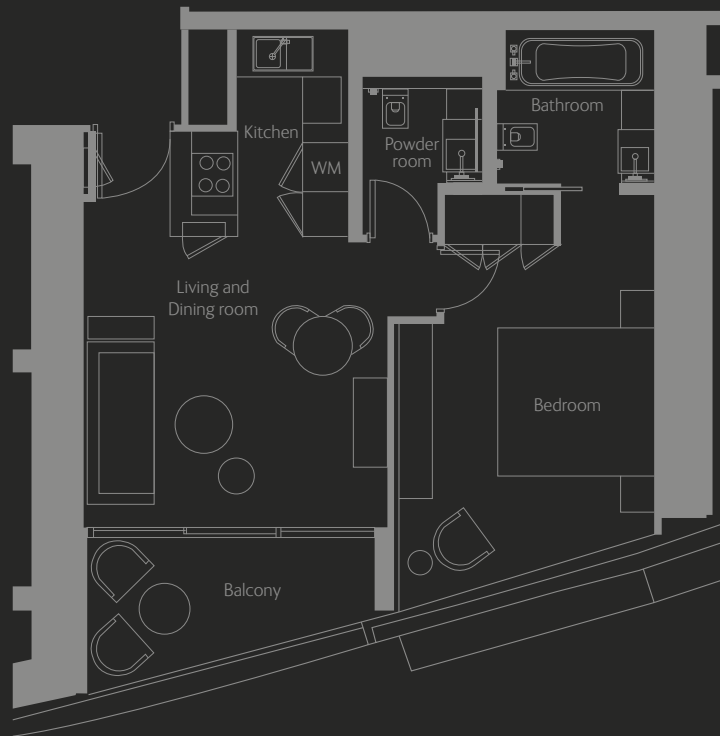
Disclaimer: 1. All materials, dimensions and drawings are approximate. 2. Information is subject to change without notice.
3. Actual suite area may vary from the stated area. 4. Drawings not to scale. 5. The developer reserves the right to make revisions/alterations without any liability whatsoever.



ADDRESS
RESIDENCES
JUMEIRAH
RESORT + SPA

ONE-BEDROOM RESIDENCE - TYPE R1A

LEVELS: 3 to 16, 18 to 41



SELLABLE AREA

	SQ.M	SQ.FT
SUITE AREA	57	615 - 616
BALCONY AREA	8	89
TOTAL AREA	65 - 66	704 - 706

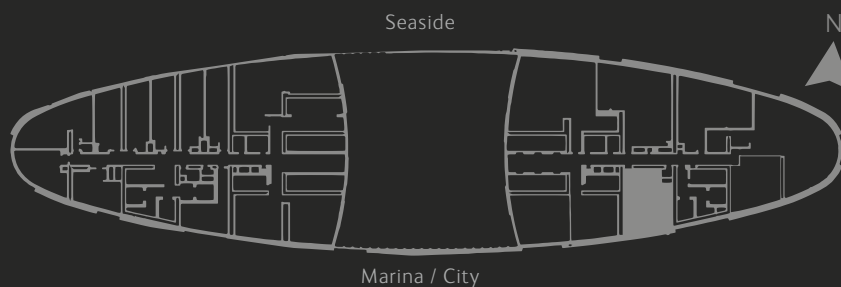
Disclaimer: 1. All materials, dimensions and drawings are approximate. 2. Information is subject to change without notice. 3. Actual suite area may vary from the stated area. 4. Drawings not to scale. 5. The developer reserves the right to make revisions/alterations without any liability whatsoever. 6. Residential Apartments are sold as unfurnished apartments, without furniture, furnishings, white goods, etc.



ADDRESS
RESIDENCES
JUMEIRAH
RESORT + SPA

ONE-BEDROOM RESIDENCE - TYPE R1B

LEVELS: 3 to 16, 18 to 41



SELLABLE AREA

	SQ.M	SQ.FT
SUITE AREA	72	776 - 777
BALCONY AREA	8	81
TOTAL AREA	80	858

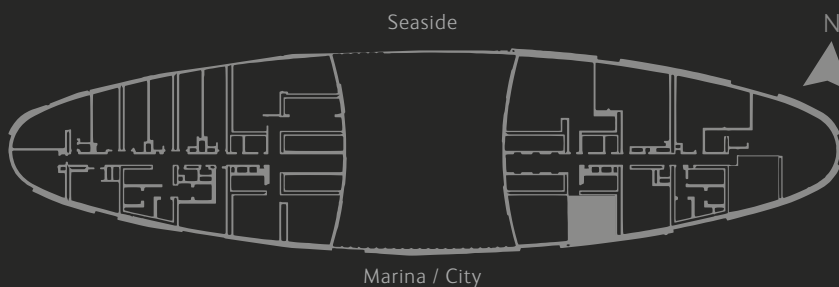
Disclaimer: 1. All materials, dimensions and drawings are approximate. 2. Information is subject to change without notice. 3. Actual suite area may vary from the stated area. 4. Drawings not to scale. 5. The developer reserves the right to make revisions/alterations without any liability whatsoever. 6. Residential Apartments are sold as unfurnished apartments, without furniture, furnishings, white goods, etc.



ADDRESS
RESIDENCES
JUMEIRAH
RESORT + SPA

ONE-BEDROOM RESIDENCE - TYPE R1C

LEVELS: 3 to 16, 18 to 41



SELLABLE AREA

	SQ.M	SQ.FT
SUITE AREA	59	638
TOTAL AREA	59	638

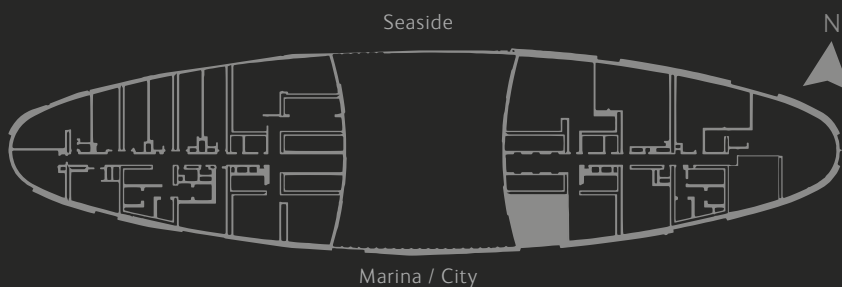
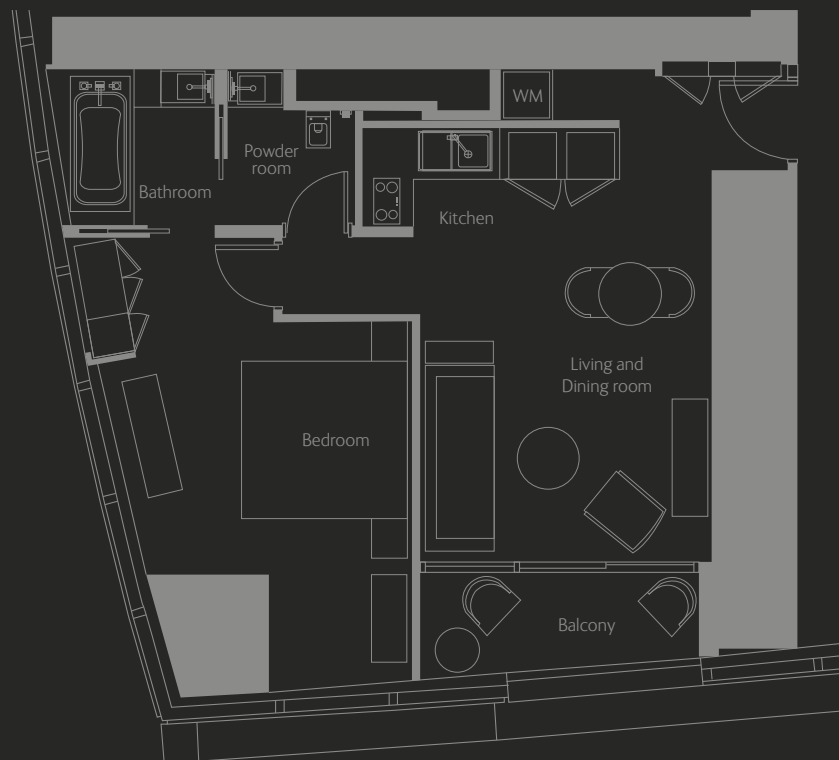
Disclaimer: 1. All materials, dimensions and drawings are approximate. 2. Information is subject to change without notice. 3. Actual suite area may vary from the stated area. 4. Drawings not to scale. 5. The developer reserves the right to make revisions/alterations without any liability whatsoever. 6. Residential Apartments are sold as unfurnished apartments, without furniture, furnishings, white goods, etc.



ADDRESS
RESIDENCES
JUMEIRAH
RESORT + SPA

ONE-BEDROOM RESIDENCE - TYPE R1D

LEVELS: 13 to 16, 18 to 41



SELLABLE AREA

	SQ.M	SQ.FT
SUITE AREA	62 - 65	672 - 695
BALCONY AREA	6	68
TOTAL AREA	69 - 71	740 - 763

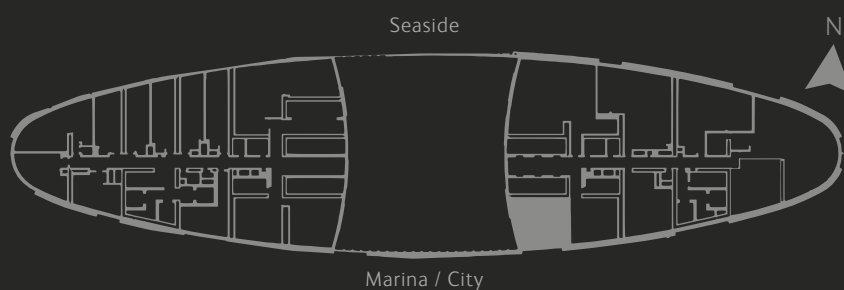
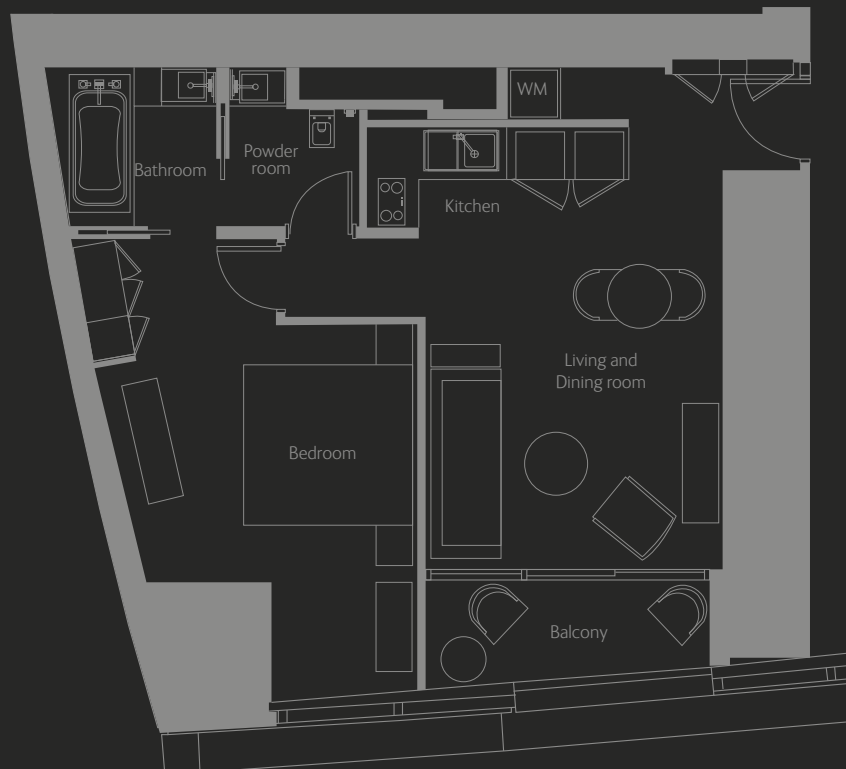
Disclaimer: 1. All materials, dimensions and drawings are approximate. 2. Information is subject to change without notice. 3. Actual suite area may vary from the stated area. 4. Drawings not to scale. 5. The developer reserves the right to make revisions/alterations without any liability whatsoever. 6. Residential Apartments are sold as unfurnished apartments, without furniture, furnishings, white goods, etc.



ADDRESS
RESIDENCES
JUMEIRAH
RESORT + SPA

ONE-BEDROOM RESIDENCE - TYPE R1D

LEVELS: 3 to 8, 11 to 12



SELLABLE AREA

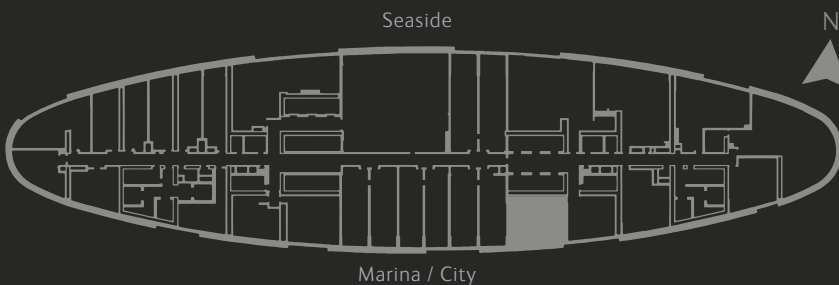
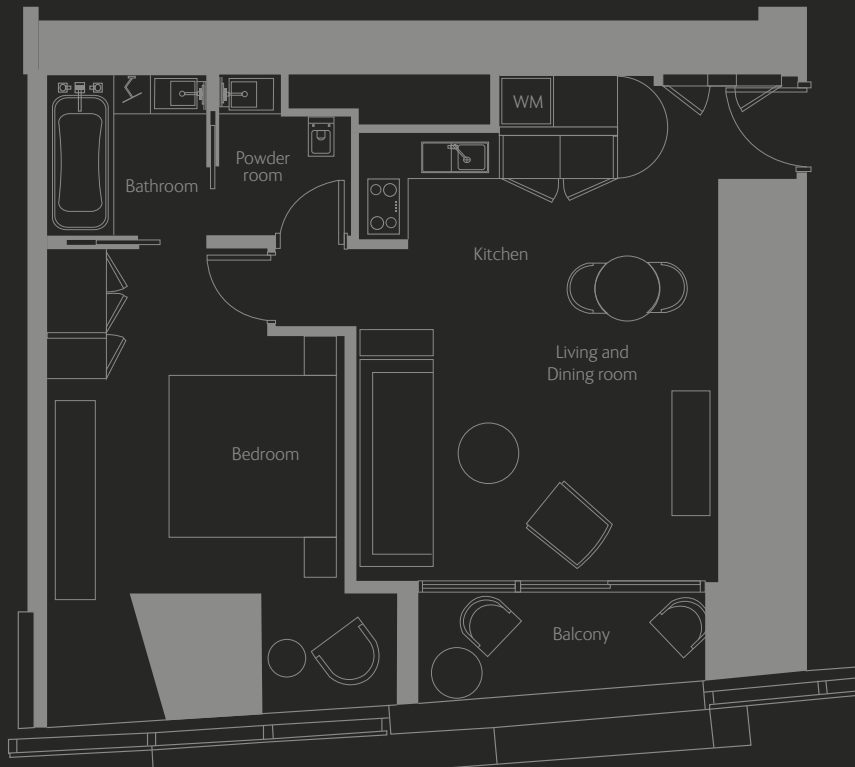
	SQ.M	SQ.FT
SUITE AREA	62 - 65	672 - 695
BALCONY AREA	6	68
TOTAL AREA	69 - 71	740 - 763

Disclaimer: 1. All materials, dimensions and drawings are approximate. 2. Information is subject to change without notice. 3. Actual suite area may vary from the stated area. 4. Drawings not to scale. 5. The developer reserves the right to make revisions/alterations without any liability whatsoever. 6. Residential Apartments are sold as unfurnished apartments, without furniture, furnishings, white goods, etc.



ADDRESS
RESIDENCES
JUMEIRAH
RESORT + SPA

ONE-BEDROOM RESIDENCE - TYPE R1E
LEVELS: 9 to 10



SELLABLE AREA

	SQ.M	SQ.FT
SUITE AREA	69	738
BALCONY AREA	6	66
TOTAL AREA	75	804

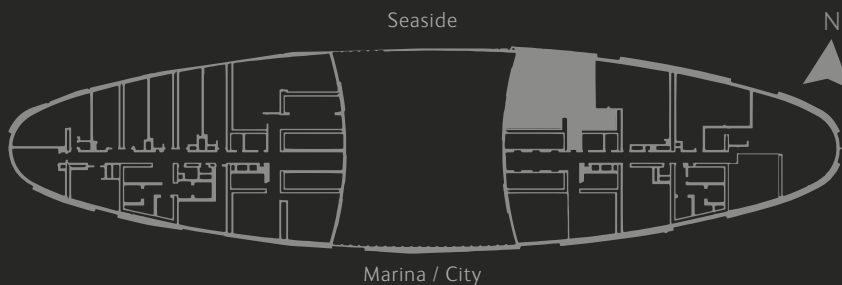
Disclaimer: 1. All materials, dimensions and drawings are approximate. 2. Information is subject to change without notice. 3. Actual suite area may vary from the stated area. 4. Drawings not to scale. 5. The developer reserves the right to make revisions/alterations without any liability whatsoever. 6. Residential Apartments are sold as unfurnished apartments, without furniture, furnishings, white goods, etc.



ADDRESS
RESIDENCES
JUMEIRAH
RESORT + SPA

TWO-BEDROOM RESIDENCE - TYPE R2A

LEVELS: 3 to 8, 11 to 12, 63



SELLABLE AREA

	SQ.M	SQ.FT
SUITE AREA	160 - 163	1723 - 1759
BALCONY AREA	19 - 21	210 - 221
TOTAL AREA	180 - 184	1933 - 1981

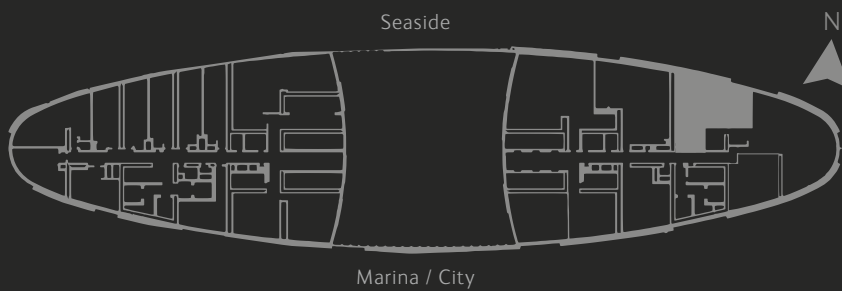
Disclaimer: 1. All materials, dimensions and drawings are approximate. 2. Information is subject to change without notice. 3. Actual suite area may vary from the stated area. 4. Drawings not to scale. 5. The developer reserves the right to make revisions/alterations without any liability whatsoever. 6. Residential Apartments are sold as unfurnished apartments, without furniture, furnishings, white goods, etc.



ADDRESS
RESIDENCES
JUMEIRAH
RESORT + SPA

TWO-BEDROOM RESIDENCE - TYPE R2C

LEVELS: 3 to 16, 18 to 41, 43 to 72



SELLABLE AREA

	SQ.M	SQ.FT
SUITE AREA	99 - 100	1066 - 1072
BALCONY AREA	10	106 - 109
TOTAL AREA	109 - 110	1171 - 1181

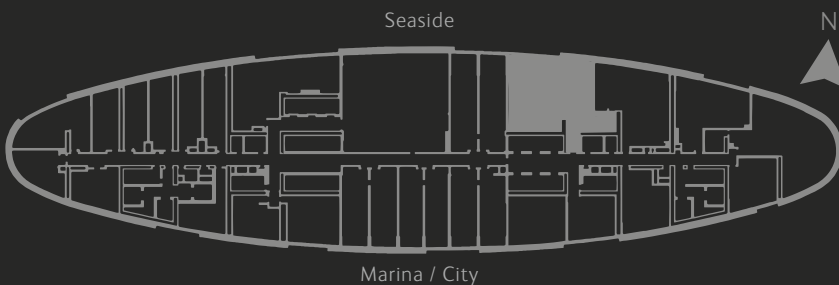
Disclaimer: 1. All materials, dimensions and drawings are approximate. 2. Information is subject to change without notice. 3. Actual suite area may vary from the stated area. 4. Drawings not to scale. 5. The developer reserves the right to make revisions/alterations without any liability whatsoever. 6. Residential Apartments are sold as unfurnished apartments, without furniture, furnishings, white goods, etc.



ADDRESS
RESIDENCES
JUMEIRAH
RESORT + SPA

TWO-BEDROOM RESIDENCE - TYPE R2D

LEVELS: 9 to 10



SELLABLE AREA

	SQ.M	SQ.FT
SUITE AREA	162	1746
BALCONY AREA	23	243
TOTAL AREA	185	1989

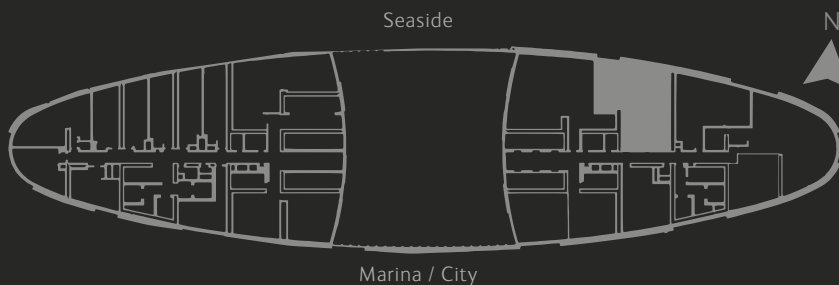
Disclaimer: 1. All materials, dimensions and drawings are approximate. 2. Information is subject to change without notice. 3. Actual suite area may vary from the stated area. 4. Drawings not to scale. 5. The developer reserves the right to make revisions/alterations without any liability whatsoever. 6. Residential Apartments are sold as unfurnished apartments, without furniture, furnishings, white goods, etc.



ADDRESS
RESIDENCES
JUMEIRAH
RESORT + SPA

TWO-BEDROOM RESIDENCE - TYPE R2E

LEVELS: 3 to 16, 18 to 41, 43 to 67



SELLABLE AREA

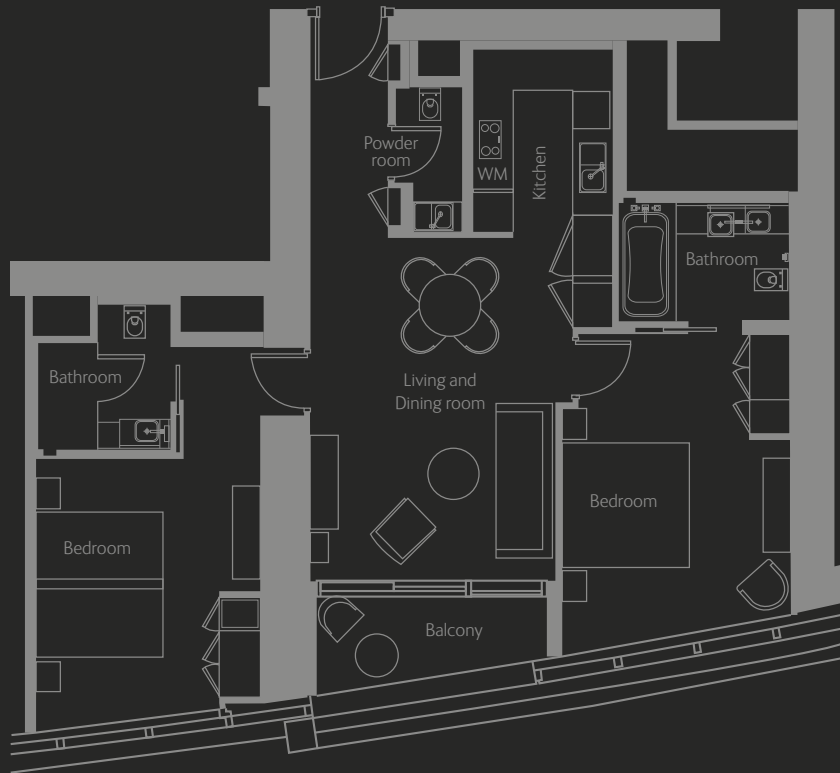
	SQ.M	SQ.FT
SUITE AREA	123 - 124	1320 - 1330
BALCONY AREA	16	176 - 177
TOTAL AREA	139 - 140	1497 - 1505

Disclaimer: 1. All materials, dimensions and drawings are approximate. 2. Information is subject to change without notice. 3. Actual suite area may vary from the stated area. 4. Drawings not to scale. 5. The developer reserves the right to make revisions/alterations without any liability whatsoever. 6. Residential Apartments are sold as unfurnished apartments, without furniture, furnishings, white goods, etc.



ADDRESS
RESIDENCES
JUMEIRAH
RESORT + SPA

TWO-BEDROOM RESIDENCE - TYPE R2F
LEVELS: 43 to 72



SELLABLE AREA

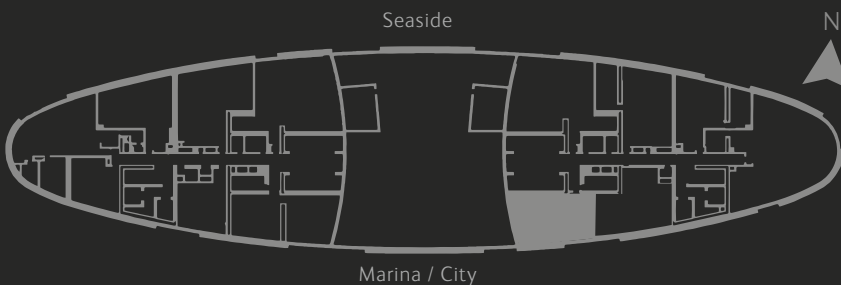
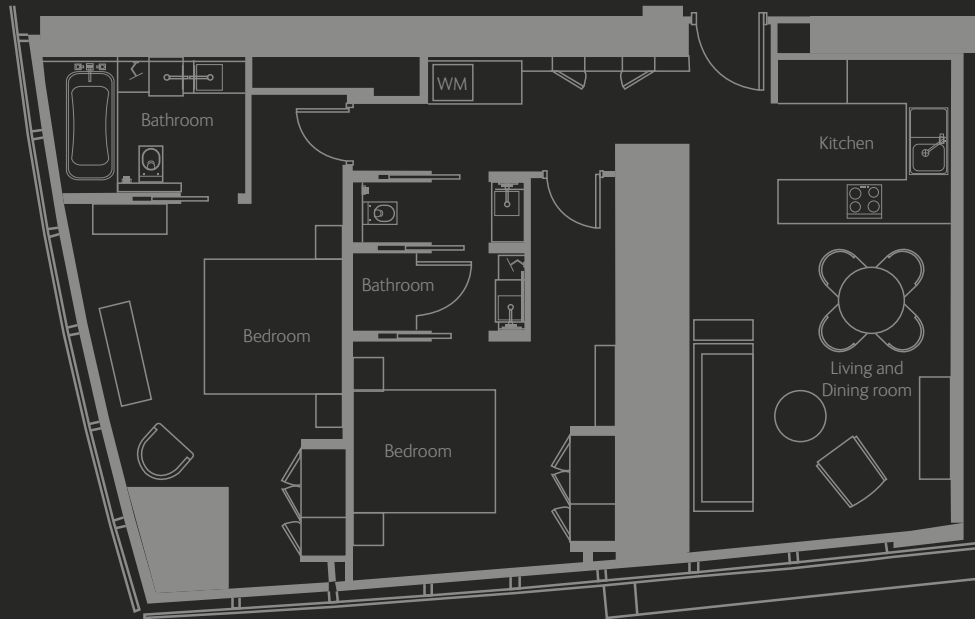
	SQ.M	SQ.FT
SUITE AREA	100 - 101	1081 - 1090
BALCONY AREA	7	79
TOTAL AREA	108 - 109	1160 - 1169

Disclaimer: 1. All materials, dimensions and drawings are approximate. 2. Information is subject to change without notice. 3. Actual suite area may vary from the stated area. 4. Drawings not to scale. 5. The developer reserves the right to make revisions/alterations without any liability whatsoever. 6. Residential Apartments are sold as unfurnished apartments, without furniture, furnishings, white goods, etc.



ADDRESS
RESIDENCES
JUMEIRAH
RESORT + SPA

TWO-BEDROOM RESIDENCE - TYPE R2G
LEVELS: 43 to 62



SELLABLE AREA

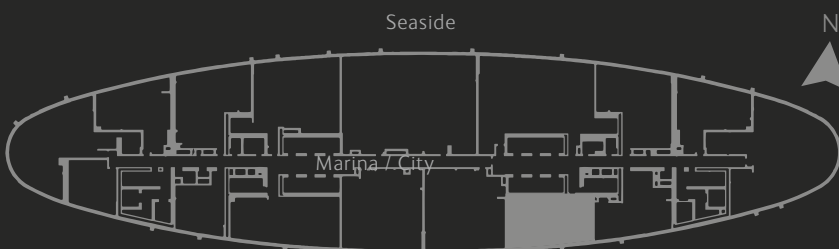
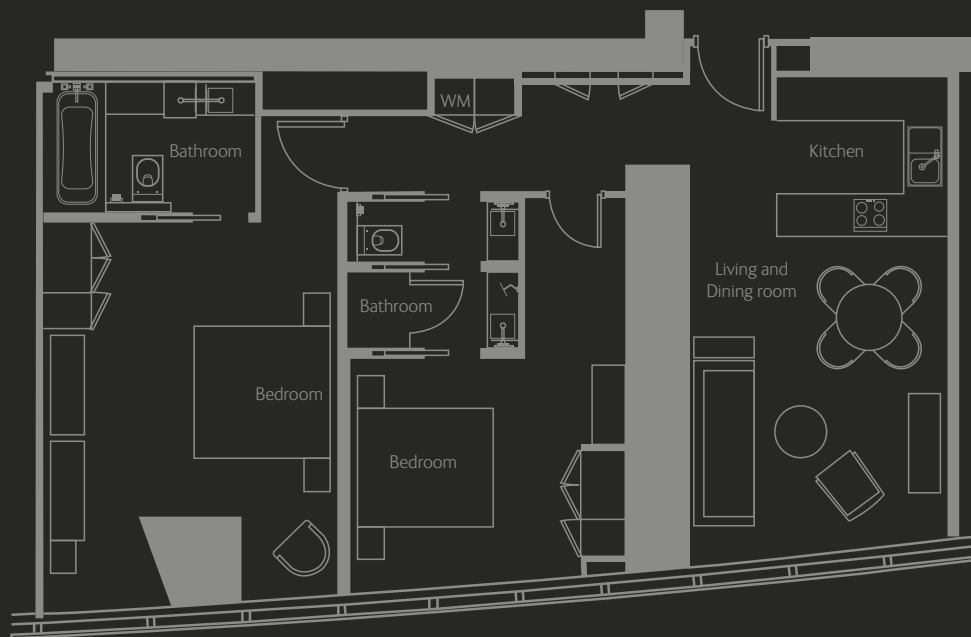
	SQ.M	SQ.FT
SUITE AREA	107 - 108	1152 - 1159
TOTAL AREA	107 - 108	1152 - 1159

Disclaimer: 1. All materials, dimensions and drawings are approximate. 2. Information is subject to change without notice. 3. Actual suite area may vary from the stated area. 4. Drawings not to scale. 5. The developer reserves the right to make revisions/alterations without any liability whatsoever. 6. Residential Apartments are sold as unfurnished apartments, without furniture, furnishings, white goods, etc.



ADDRESS
RESIDENCES
JUMEIRAH
RESORT + SPA

TWO-BEDROOM RESIDENCE - TYPE R2H
LEVELS: 64 to 72



SELLABLE AREA

	SQ.M	SQ.FT
SUITE AREA	113	1218
TOTAL AREA	113	1218

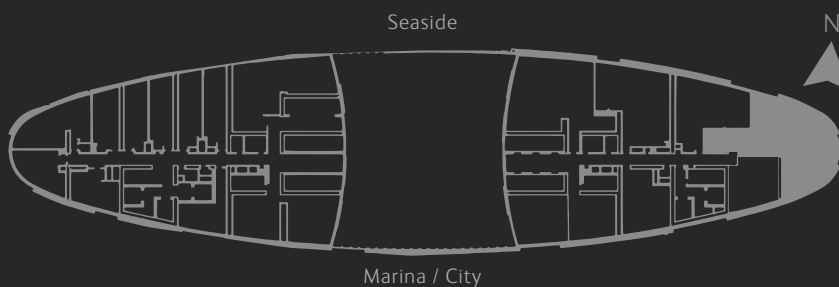
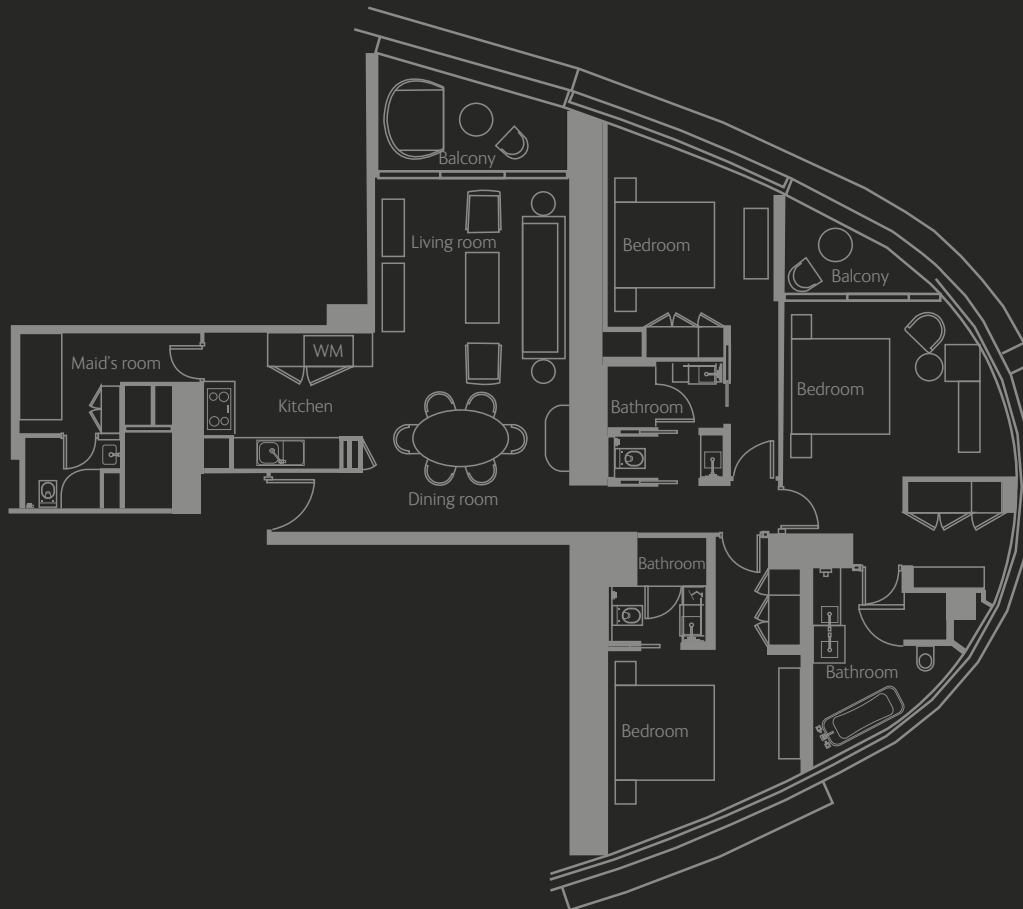
Disclaimer: 1. All materials, dimensions and drawings are approximate. 2. Information is subject to change without notice. 3. Actual suite area may vary from the stated area. 4. Drawings not to scale. 5. The developer reserves the right to make revisions/alterations without any liability whatsoever. 6. Residential Apartments are sold as unfurnished apartments, without furniture, furnishings, white goods, etc.



ADDRESS
RESIDENCES
JUMEIRAH
RESORT + SPA

THREE-BEDROOM RESIDENCE - TYPE R3A

LEVELS: 3 to 16, 18 to 41



SELLABLE AREA

	SQ.M	SQ.FT
SUITE AREA	162	1746
BALCONY AREA	14	151 -152
TOTAL AREA	176	1897 - 1899

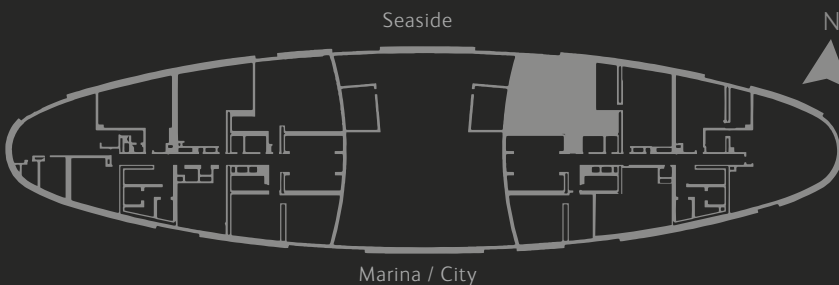
Disclaimer: 1. All materials, dimensions and drawings are approximate. 2. Information is subject to change without notice. 3. Actual suite area may vary from the stated area. 4. Drawings not to scale. 5. The developer reserves the right to make revisions/alterations without any liability whatsoever. 6. Residential Apartments are sold as unfurnished apartments, without furniture, furnishings, white goods, etc.



ADDRESS
RESIDENCES
JUMEIRAH
RESORT + SPA

THREE-BEDROOM RESIDENCE - TYPE R3B

LEVELS: 13 to 16, 18 to 41, 43 to 62



SELLABLE AREA

	SQ.M	SQ.FT
SUITE AREA	166 - 167	1782 - 1793
BALCONY AREA	16 - 17	174 - 180
TOTAL AREA	182 - 183	1962 - 1968

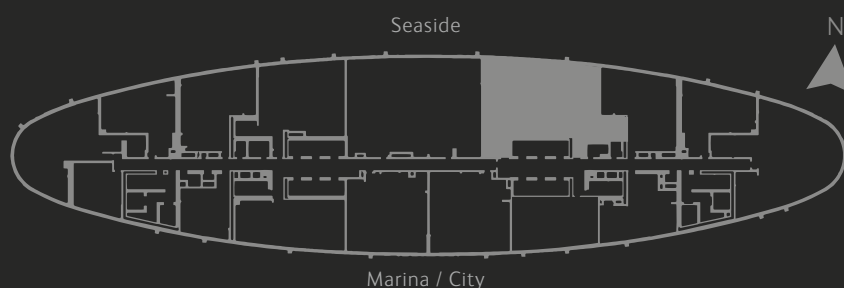
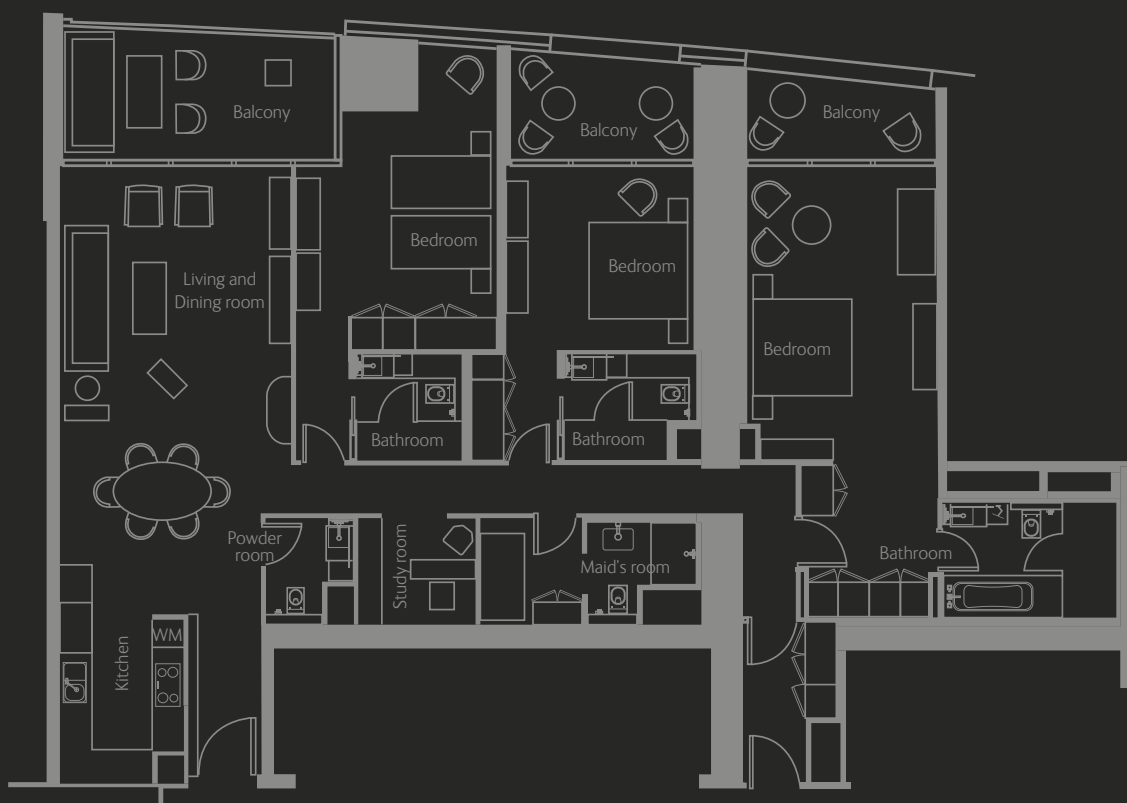
Disclaimer: 1. All materials, dimensions and drawings are approximate. 2. Information is subject to change without notice. 3. Actual suite area may vary from the stated area. 4. Drawings not to scale. 5. The developer reserves the right to make revisions/alterations without any liability whatsoever. 6. Residential Apartments are sold as unfurnished apartments, without furniture, furnishings, white goods, etc.



ADDRESS
RESIDENCES
JUMEIRAH
RESORT + SPA

THREE-BEDROOM RESIDENCE - TYPE R3C

LEVELS: 64 to 67



SELLABLE AREA

	SQ.M	SQ.FT
SUITE AREA	218	2351
BALCONY AREA	37	401
TOTAL AREA	256	2752

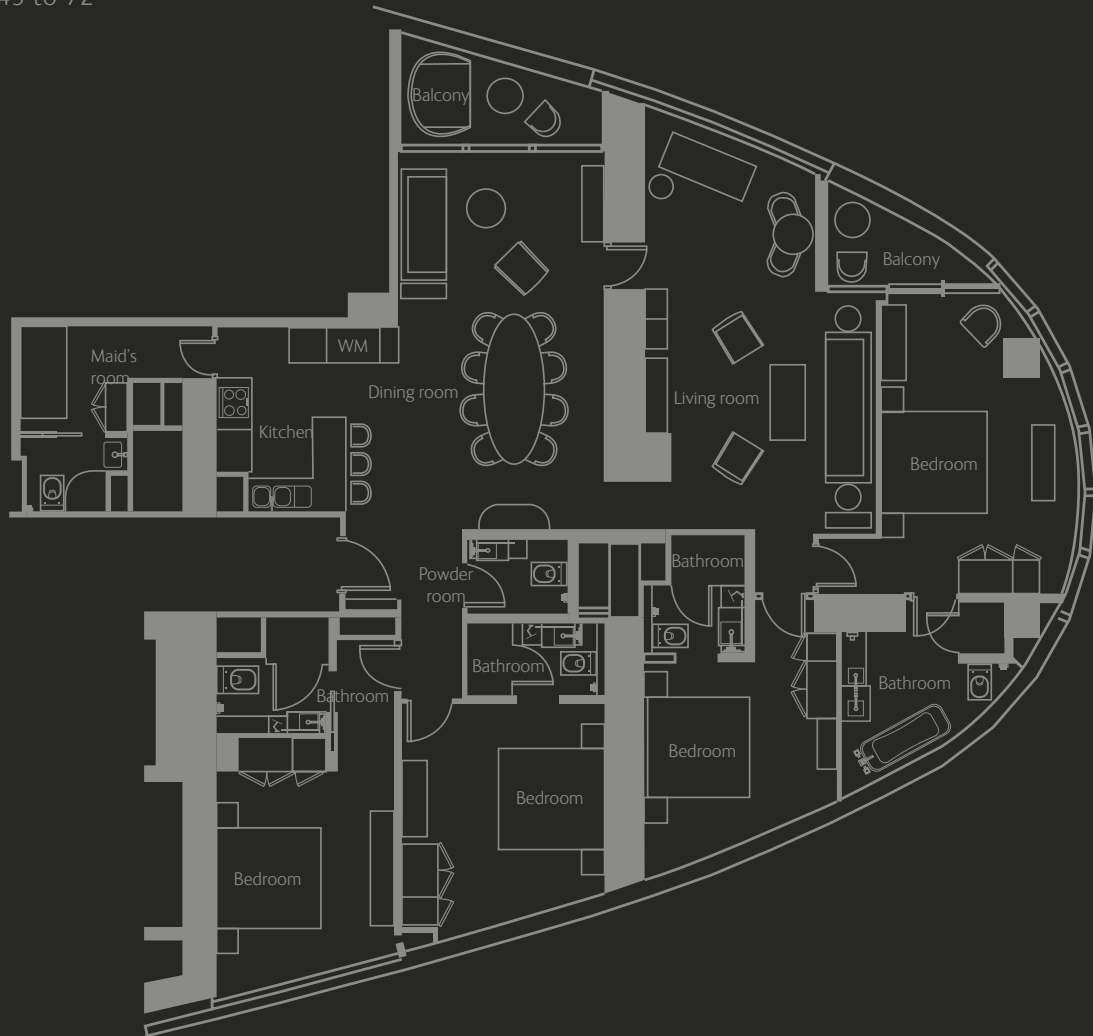
Disclaimer: 1. All materials, dimensions and drawings are approximate. 2. Information is subject to change without notice. 3. Actual suite area may vary from the stated area. 4. Drawings not to scale. 5. The developer reserves the right to make revisions/alterations without any liability whatsoever. 6. Residential Apartments are sold as unfurnished apartments, without furniture, furnishings, white goods, etc.



ADDRESS
RESIDENCES
JUMEIRAH
RESORT + SPA

FOUR-BEDROOM RESIDENCE - TYPE R4A

LEVELS: 43 to 72



SELLABLE AREA

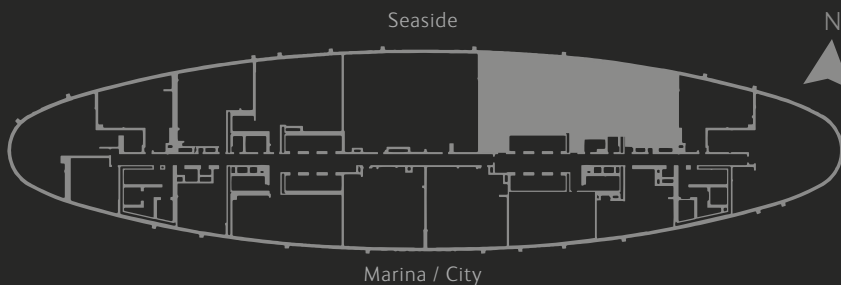
	SQ.M	SQ.FT
SUITE AREA	227	2441 - 2442
BALCONY AREA	14	147 - 148
TOTAL AREA	240 - 241	2588 - 2590

Disclaimer: 1. All materials, dimensions and drawings are approximate. 2. Information is subject to change without notice. 3. Actual suite area may vary from the stated area. 4. Drawings not to scale. 5. The developer reserves the right to make revisions/alterations without any liability whatsoever. 6. Residential Apartments are sold as unfurnished apartments, without furniture, furnishings, white goods, etc.



ADDRESS
RESIDENCES
JUMEIRAH
RESORT + SPA

FIVE-BEDROOM RESIDENCE - TYPE R5A
LEVELS: 68 to 72



SELLABLE AREA

	SQ.M	SQ.FT
SUITE AREA	354	3810
BALCONY AREA	45	489
TOTAL AREA	399	4300

Disclaimer: 1. All materials, dimensions and drawings are approximate. 2. Information is subject to change without notice. 3. Actual suite area may vary from the stated area. 4. Drawings not to scale. 5. The developer reserves the right to make revisions/alterations without any liability whatsoever. 6. Residential Apartments are sold as unfurnished apartments, without furniture, furnishings, white goods, etc.