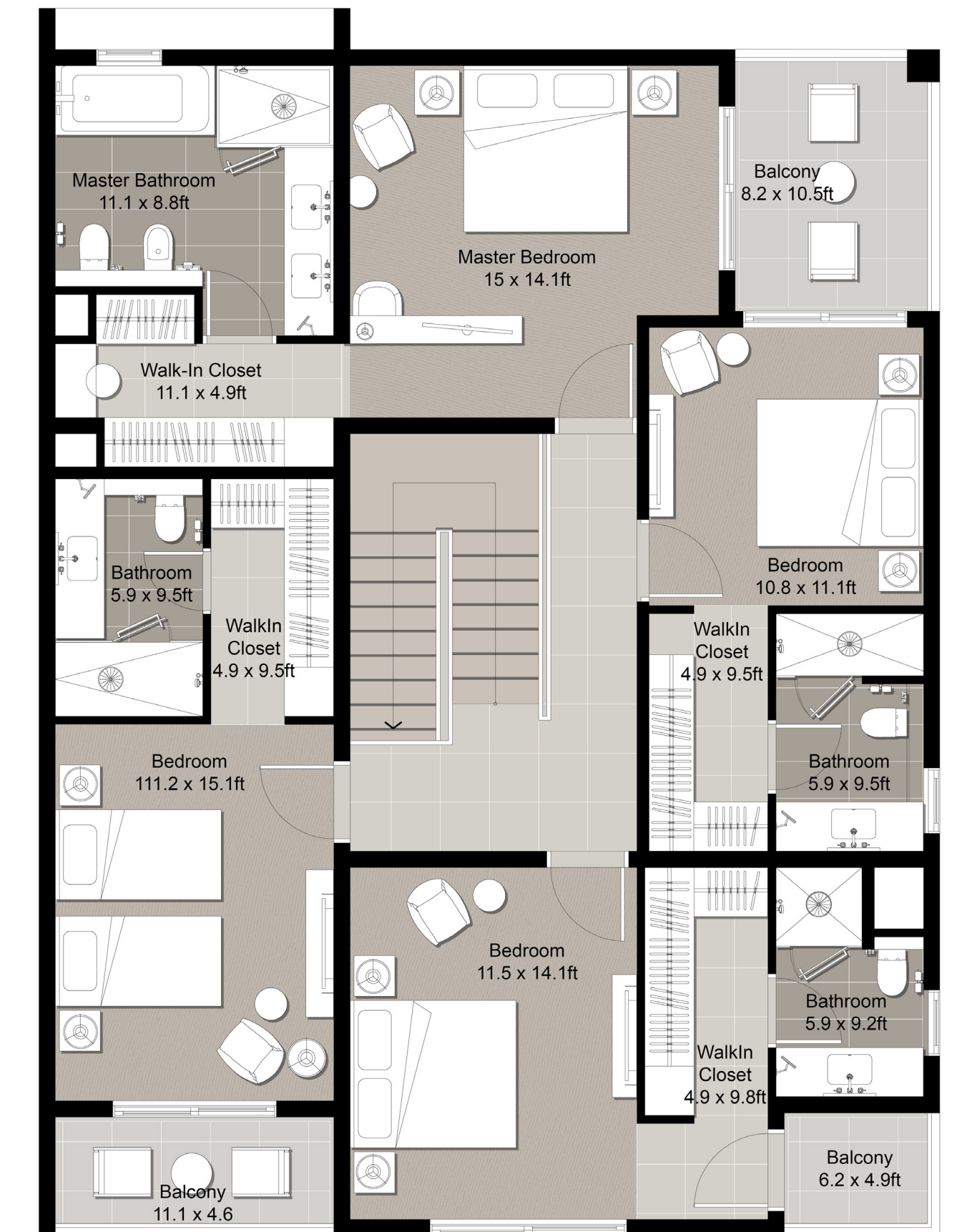
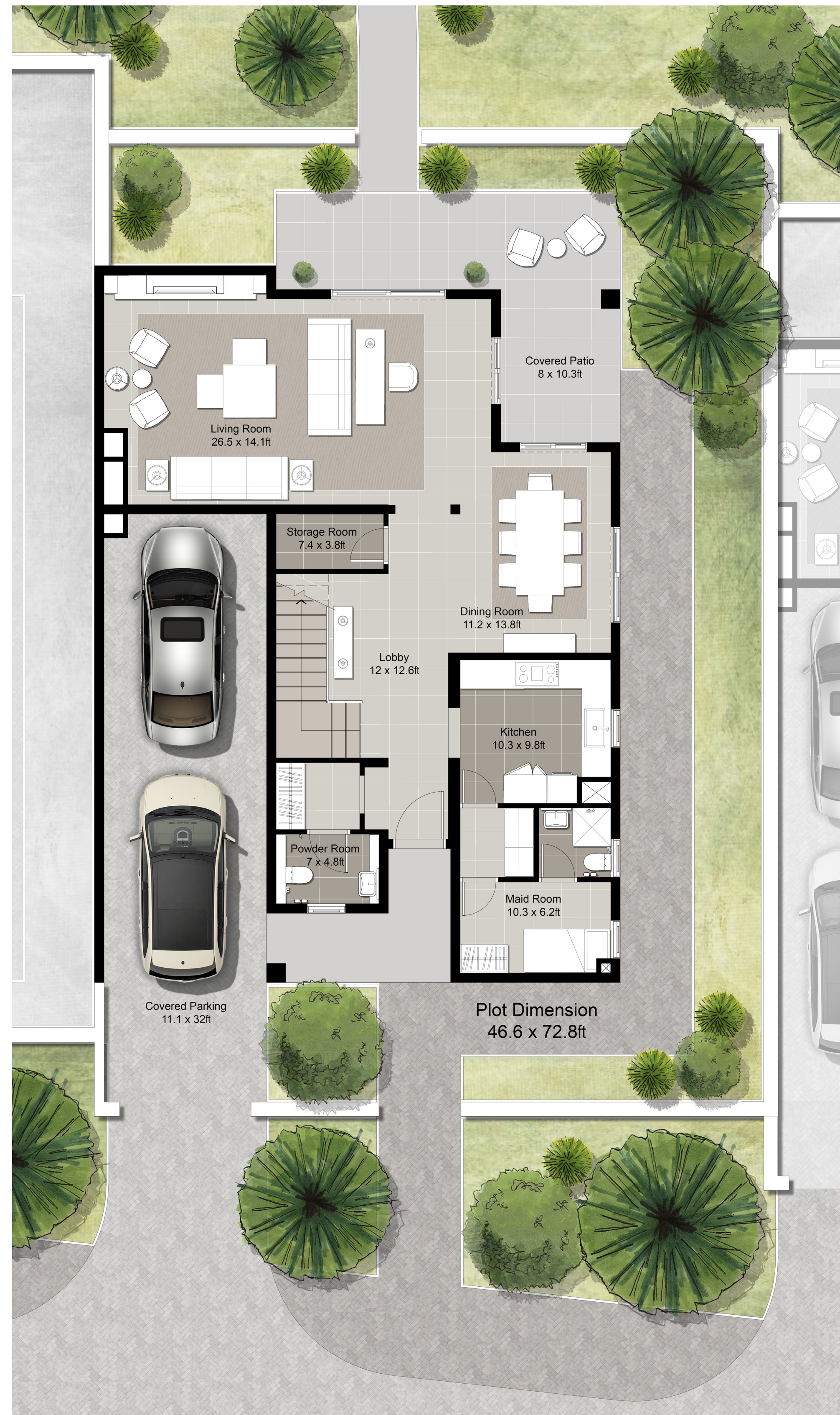




ADDRESS  
RESIDENCES  
FUJAIRAH  
RESORT + SPA

4_BEDROOM	<b>GARDEN VILLA</b>
UNIT NO.	<b>GV-02</b>
PLOT AREA	<b>315 m<sup>2</sup> / 3,390 ft<sup>2</sup></b>
UNIT AREA	<b>254 m<sup>2</sup> / 2,734 ft<sup>2</sup></b>
TERRACES AREA	<b>31 m<sup>2</sup> / 334 ft<sup>2</sup></b>
PARKING AREA	<b>35 m<sup>2</sup> / 377 ft<sup>2</sup></b>
TOTAL AREA	<b>320 m<sup>2</sup> / 3,445 ft<sup>2</sup></b>



ADDRESS  
RESIDENCES  
FUJAIRAH  
RESORT + SPA

**Disclaimer:**

**1.** All room dimensions are measured to structural elements and exclude all finishes and construction tolerances. **2.** All dimensions have been provided by our consultant architects. **3.** All materials, dimensions and drawings are approximate. Information is subject to change without notice. **4.** Actual suite area may vary from the stated area. Drawings not to scale. The developer reserves the right to make revisions. **5.** Calculation of suite area is measured as the area bounded by the centre line of the demising or partition walls separating one unit from another unit, the exterior face of all exterior walls, and the exterior face of the corridor wall enclosing the adjoining unit. **6.** Calculation of balcony area is measured as the area bounded by the centre line of the demising or partition walls separating one unit from another unit, the out most face of the enclosing guard and the external face of the unit adjoining the balcony. **7.** The units are measured at typical floor in the building. Columns may vary in size depending on the floor level.