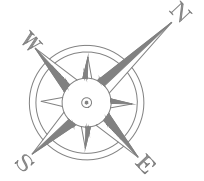


FIRST FLOOR PLAN

- STUDIO
- 1 BEDROOM
- 2 BEDROOM



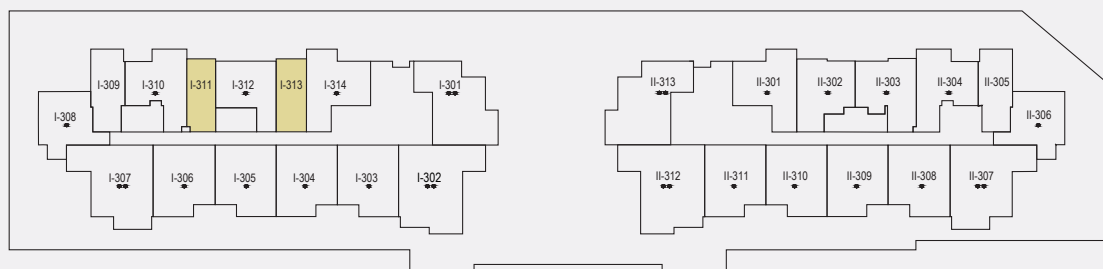


TYPICAL FLOOR PLAN



Typical apartment type

STUDIO-TYPE A



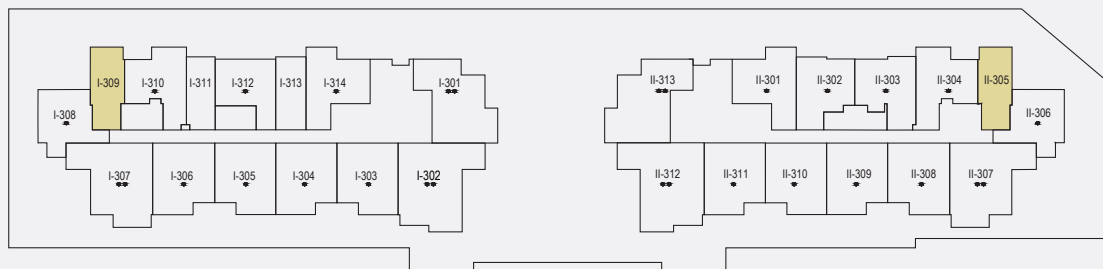
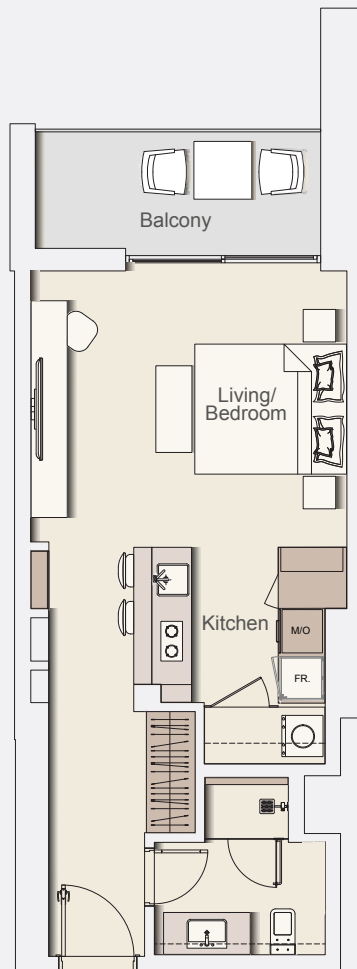
Typical Floor Plan from 2nd to 12th floor.

| | |
|--------------------------|----------------------|
| Internal Living Area | 439.27 sq.ft. |
| Outdoor Living Area | 77.93 sq.ft. |
| Total Living Area | 517.21 sq.ft. |

All drawings and dimensions are approximate. Drawings are not to scale and are subject to change without notice. The developer reserves the right to make revisions. The units are measured at typical floor in the building and columns may vary in size depending on the floor level. The furnishings and accessories shown are for representation only. The length and width of the Unit and balcony varies depending on which floor and which orientation the unit is located within the building to comply with the building authority regulations.

Typical apartment type

STUDIO-TYPE B



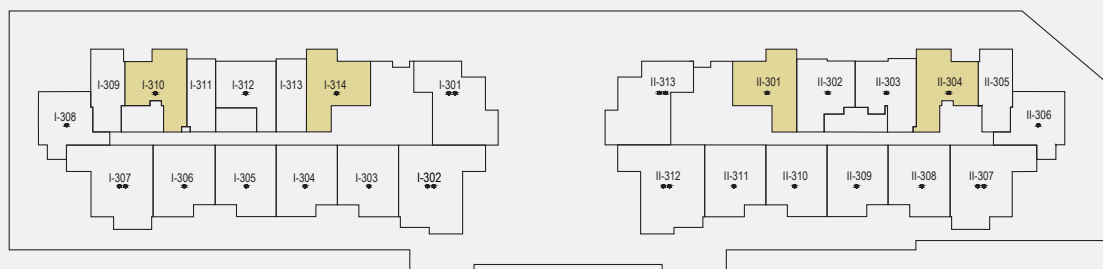
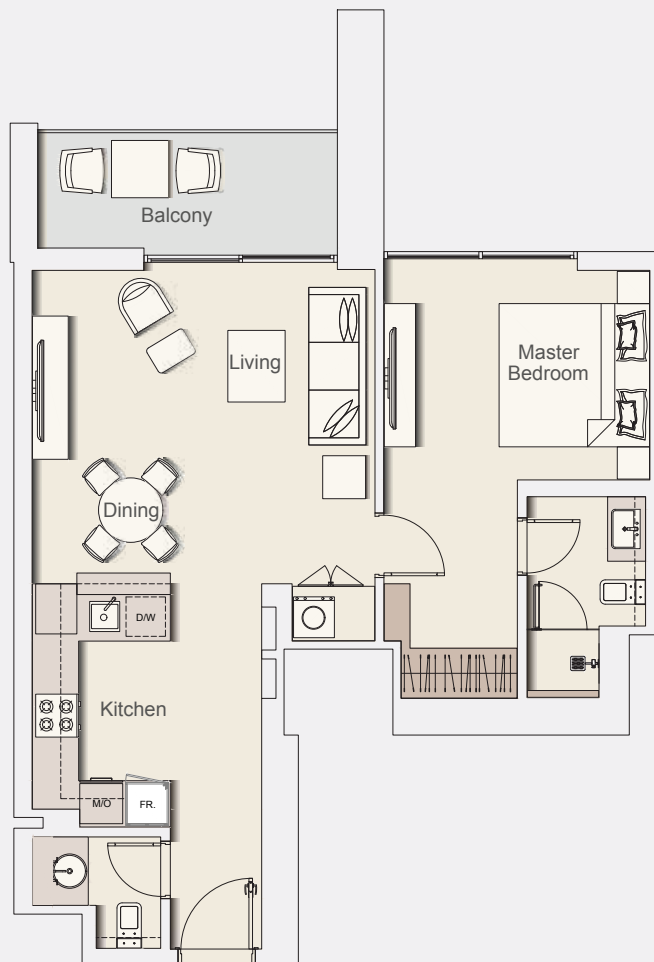
Typical Floor Plan from 2nd to 12th floor.

| | |
|----------------------|---------------|
| Internal Living Area | 455.96 sq.ft. |
| Outdoor Living Area | 84.17 sq.ft. |
| Total Living Area | 540.13 sq.ft. |

All drawings and dimensions are approximate. Drawings are not to scale and are subject to change without notice. The developer reserves the right to make revisions. The units are measured at typical floor in the building and columns may vary in size depending on the floor level. The furnishings and accessories shown are for representation only. The length and width of the Unit and balcony varies depending on which floor and which orientation the unit is located within the building to comply with the building authority regulations.

Typical apartment type

1 BR-TYPE A



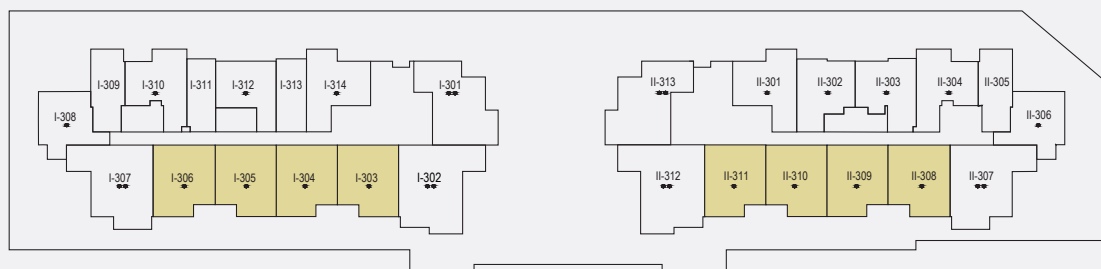
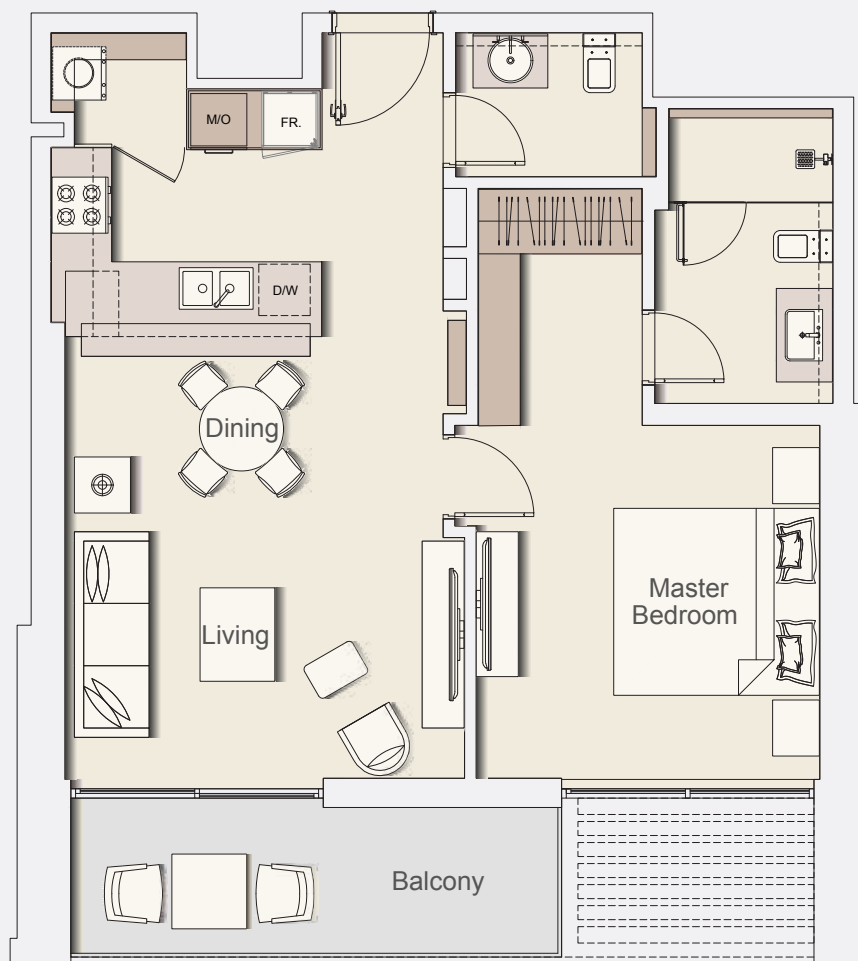
Typical Floor Plan from 2nd to 12th floor.

| | |
|--------------------------|----------------------|
| Internal Living Area | 697.93 sq.ft. |
| Outdoor Living Area | 88.59 sq.ft. |
| Total Living Area | 786.52 sq.ft. |

All drawings and dimensions are approximate. Drawings are not to scale and are subject to change without notice. The developer reserves the right to make revisions. The units are measured at typical floor in the building and columns may vary in size depending on the floor level. The furnishings and accessories shown are for representation only. The length and width of the Unit and balcony varies depending on which floor and which orientation the unit is located within the building to comply with the building authority regulations.

Typical apartment type

1 BR-TYPE B



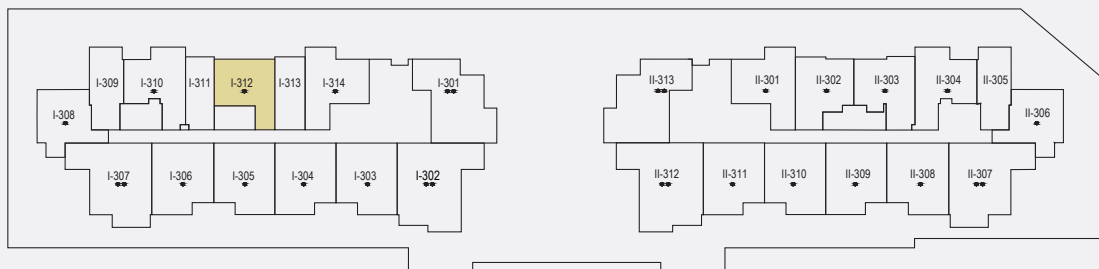
Typical Floor Plan from 2nd to 12th floor.

| | |
|--------------------------|----------------------|
| Internal Living Area | 731.73 sq.ft. |
| Outdoor Living Area | 100.21 sq.ft. |
| Total Living Area | 831.94 sq.ft. |

All drawings and dimensions are approximate. Drawings are not to scale and are subject to change without notice. The developer reserves the right to make revisions. The units are measured at typical floor in the building and columns may vary in size depending on the floor level. The furnishings and accessories shown are for representation only. The length and width of the Unit and balcony varies depending on which floor and which orientation the unit is located within the building to comply with the building authority regulations.

Typical apartment type

1 BR-TYPE C



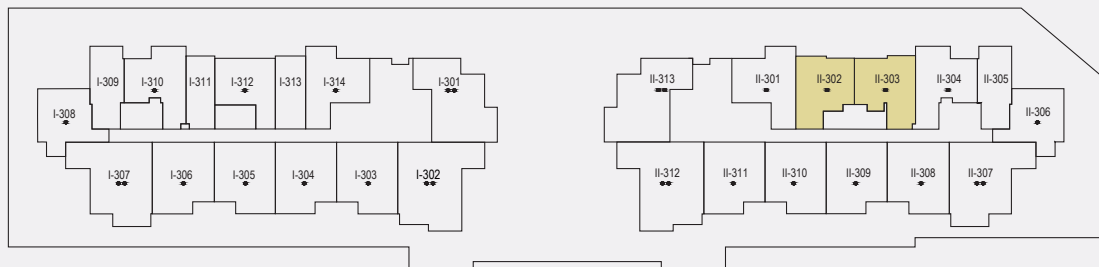
Typical Floor Plan from 2nd to 12th floor.

| | |
|--------------------------|----------------------|
| Internal Living Area | 673.17 sq.ft. |
| Outdoor Living Area | 102.15 sq.ft. |
| Total Living Area | 775.32 sq.ft. |

All drawings and dimensions are approximate. Drawings are not to scale and are subject to change without notice. The developer reserves the right to make revisions. The units are measured at typical floor in the building and columns may vary in size depending on the floor level. The furnishings and accessories shown are for representation only. The length and width of the Unit and balcony varies depending on which floor and which orientation the unit is located within the building to comply with the building authority regulations.

Typical apartment type

1 BR-TYPE D



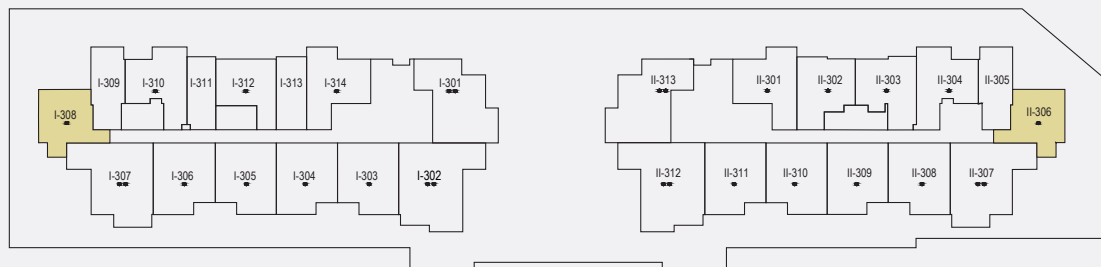
Typical Floor Plan from 2nd to 12th floor.

| | |
|--------------------------|----------------------|
| Internal Living Area | 673.60 sq.ft. |
| Outdoor Living Area | 90.52 sq.ft. |
| Total Living Area | 764.13 sq.ft. |

All drawings and dimensions are approximate. Drawings are not to scale and are subject to change without notice. The developer reserves the right to make revisions. The units are measured at typical floor in the building and columns may vary in size depending on the floor level. The furnishings and accessories shown are for representation only. The length and width of the Unit and balcony varies depending on which floor and which orientation the unit is located within the building to comply with the building authority regulations.

Typical apartment type

1 BR-TYPE E



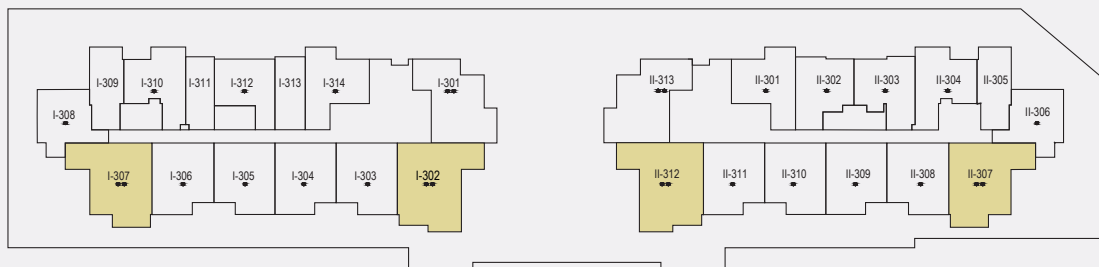
Typical Floor Plan from 2nd to 12th floor.

| | |
|--------------------------|----------------------|
| Internal Living Area | 651.32 sq.ft. |
| Outdoor Living Area | 55.00 sq.ft. |
| Total Living Area | 706.33 sq.ft. |

All drawings and dimensions are approximate. Drawings are not to scale and are subject to change without notice. The developer reserves the right to make revisions. The units are measured at typical floor in the building and columns may vary in size depending on the floor level. The furnishings and accessories shown are for representation only. The length and width of the Unit and balcony varies depending on which floor and which orientation the unit is located within the building to comply with the building authority regulations.

Typical apartment type

2 BR-TYPE A



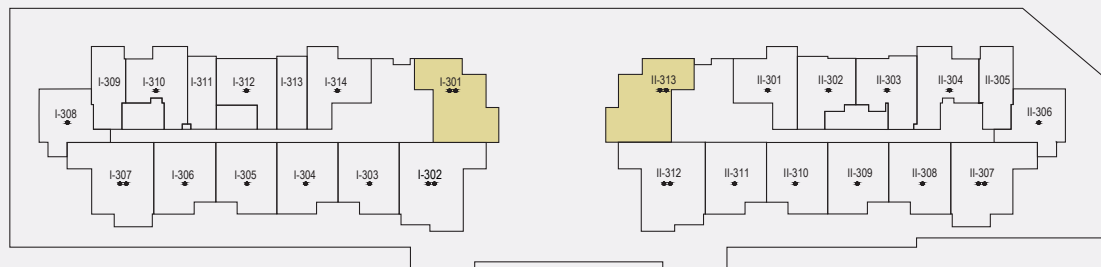
Typical Floor Plan from 2nd to 12th floor.

| | |
|----------------------|----------------|
| Internal Living Area | 1037.64 sq.ft. |
| Outdoor Living Area | 105.27 sq.ft. |
| Total Living Area | 1142.91 sq.ft. |

All drawings and dimensions are approximate. Drawings are not to scale and are subject to change without notice. The developer reserves the right to make revisions. The units are measured at typical floor in the building and columns may vary in size depending on the floor level. The furnishings and accessories shown are for representation only. The length and width of the Unit and balcony varies depending on which floor and which orientation the unit is located within the building to comply with the building authority regulations.

Typical apartment type

2 BR-TYPE B



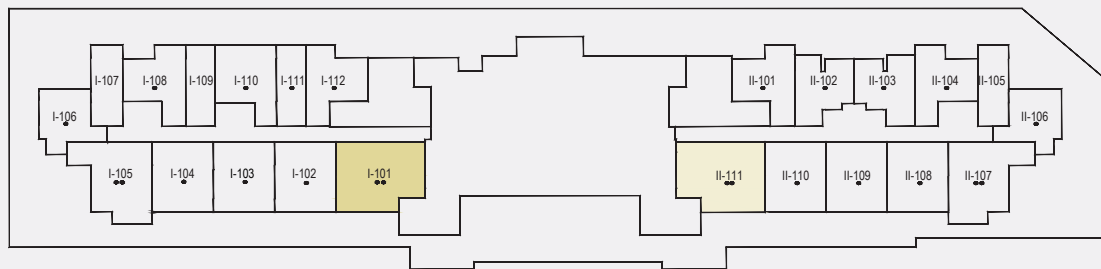
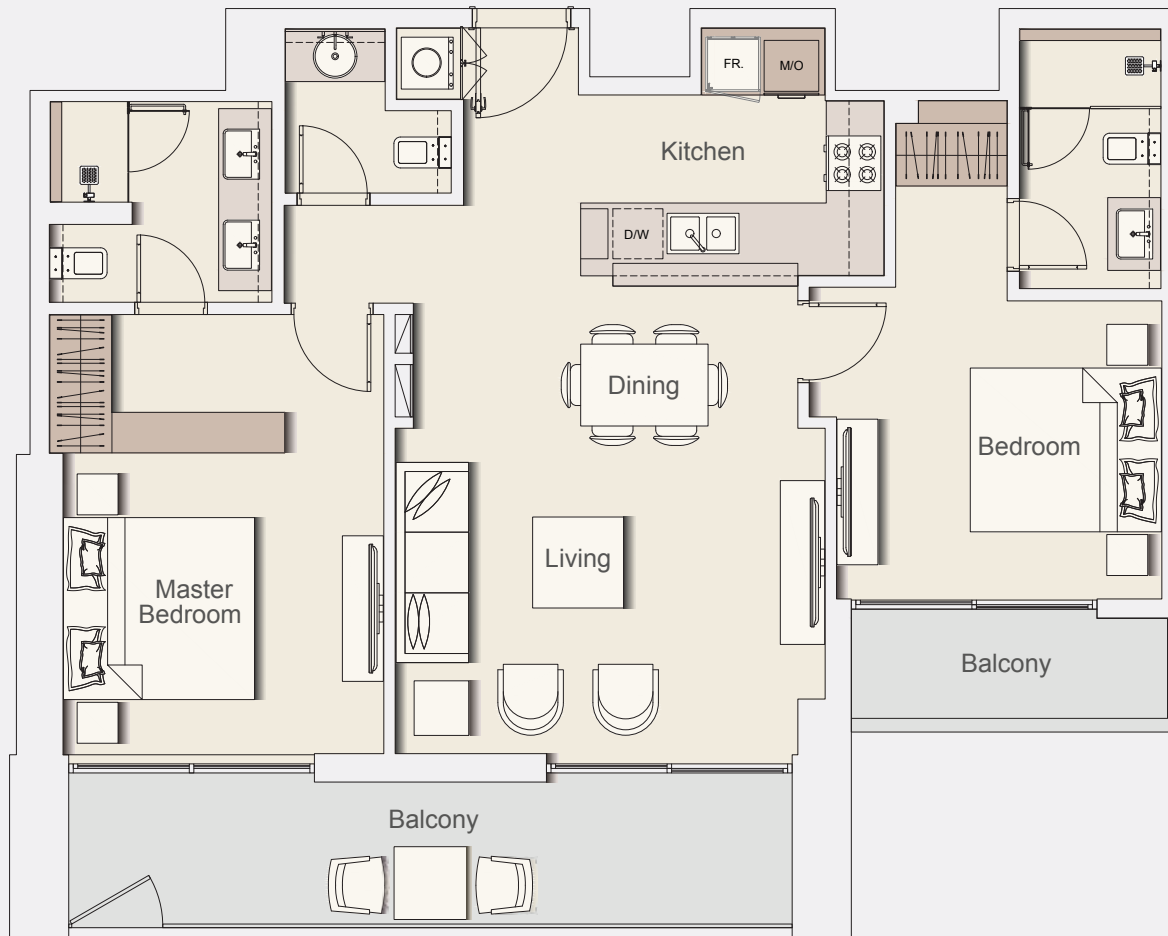
Typical Floor Plan from 2nd to 12th floor.

| | |
|--------------------------|-----------------------|
| Internal Living Area | 957.02 sq.ft. |
| Outdoor Living Area | 93.00 sq.ft. |
| Total Living Area | 1050.02 sq.ft. |

All drawings and dimensions are approximate. Drawings are not to scale and are subject to change without notice. The developer reserves the right to make revisions. The units are measured at typical floor in the building and columns may vary in size depending on the floor level. The furnishings and accessories shown are for representation only. The length and width of the Unit and balcony varies depending on which floor and which orientation the unit is located within the building to comply with the building authority regulations.

Typical apartment type

2 BR-TYPE C



| | |
|--------------------------|-----------------------|
| Internal Living Area | 999.75 sq.ft. |
| Outdoor Living Area | 1157.26 sq.ft. |
| Total Living Area | 1157.01 sq.ft. |

All drawings and dimensions are approximate. Drawings are not to scale and are subject to change without notice. The developer reserves the right to make revisions. The units are measured at typical floor in the building and columns may vary in size depending on the floor level. The furnishings and accessories shown are for representation only. The length and width of the Unit and balcony varies depending on which floor and which orientation the unit is located within the building to comply with the building authority regulations.