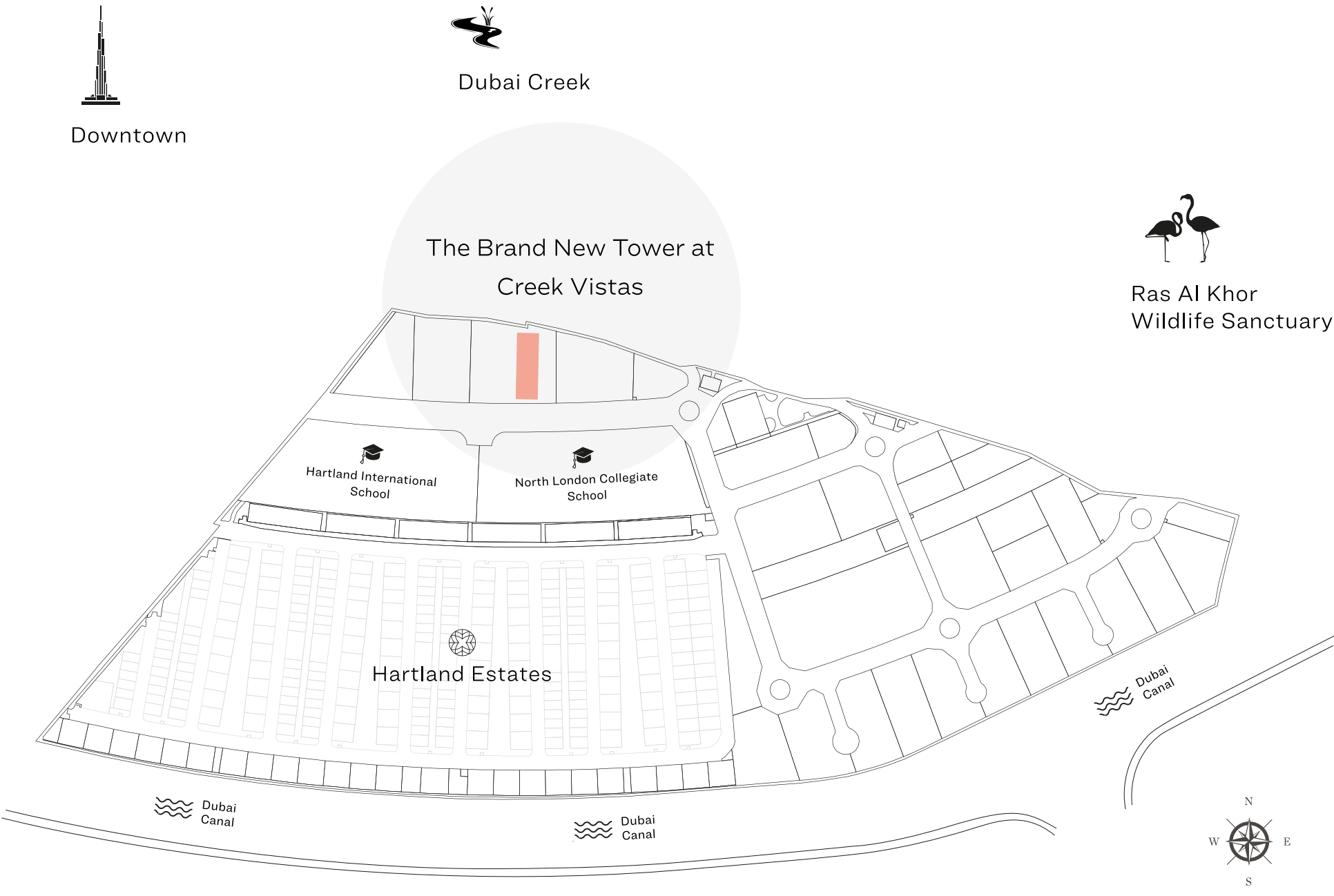


SOBHA HARTLAND
CREEK VISTAS

FLOOR PLAN



MASTER PLAN



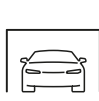
APARTMENT FEATURES



Variety of unit plans



Impeccable interiors



Undercover car parking



Fully fitted kitchens



Balcony in all units



Bedroom wardrobe in all units



SOBHA HARTLAND

CREEK VISTAS

UNIT PLAN

- 1 BEDROOM TYPE A
- 1 BEDROOM TYPE B
- 2 BEDROOM TYPE A
- 2 BEDROOM TYPE B



Hartland Estates



Dubai Canal



Dubai Canal



SOBHA HARTLAND

CREEK VISTAS

1 B E D R O O M A P A R T M E N T

TYPE A (with balcony)

Downtown and Canal view



Dubai Canal

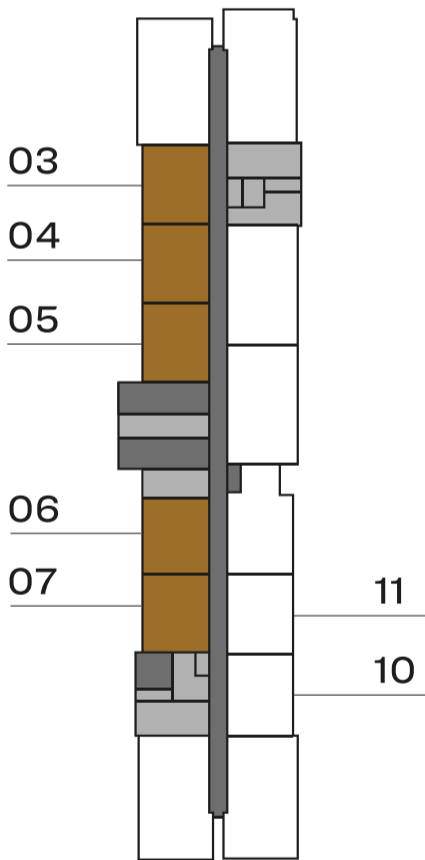


Downtown

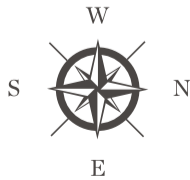
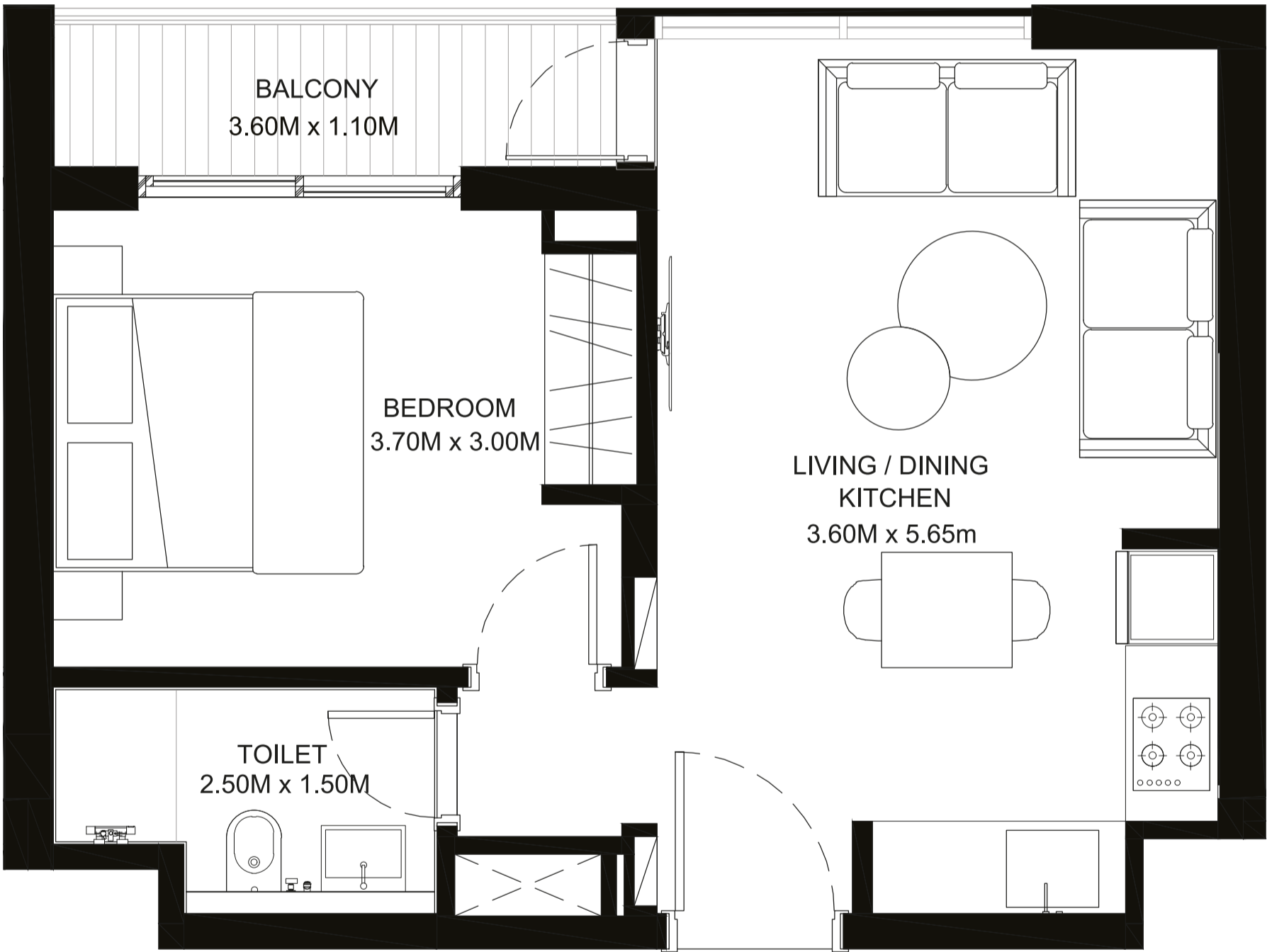
Suite Area - 445.09 Sq. Ft.

Balcony Area - 49.41 Sq. Ft.

Net Saleable Area - 494.50 Sq. Ft.



UNIT TYPE - 1A | LEVELS 2 - 28



Disclaimer: 1. All dimensions are in metric, measured to wall finishes. 2. All materials, dimensions & drawings are approximate. 3. Information is subject to change without notice, at developer's absolute discretion. 4. Actual area may vary from the stated area. 5. Drawings are not to scale. 6. All images used are for illustrative purposes only and do not represent the actual size, features, specifications, fittings and furnishings. 7. The developer reserves the right to make revisions/ alterations, at its absolute discretion, without any liability whatsoever.



SOBHA HARTLAND

CREEK VISTAS

1 B E D R O O M A P A R T M E N T

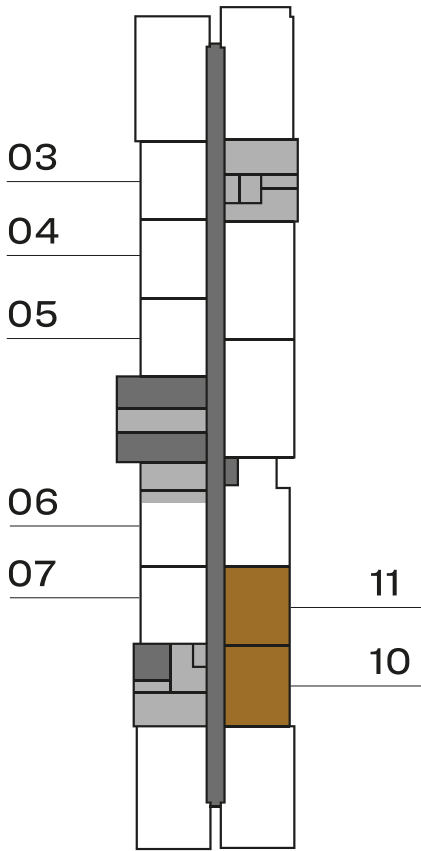
TYPE A (with balcony)

Ras Al Khor Wildlife Sanctuary and Canal view

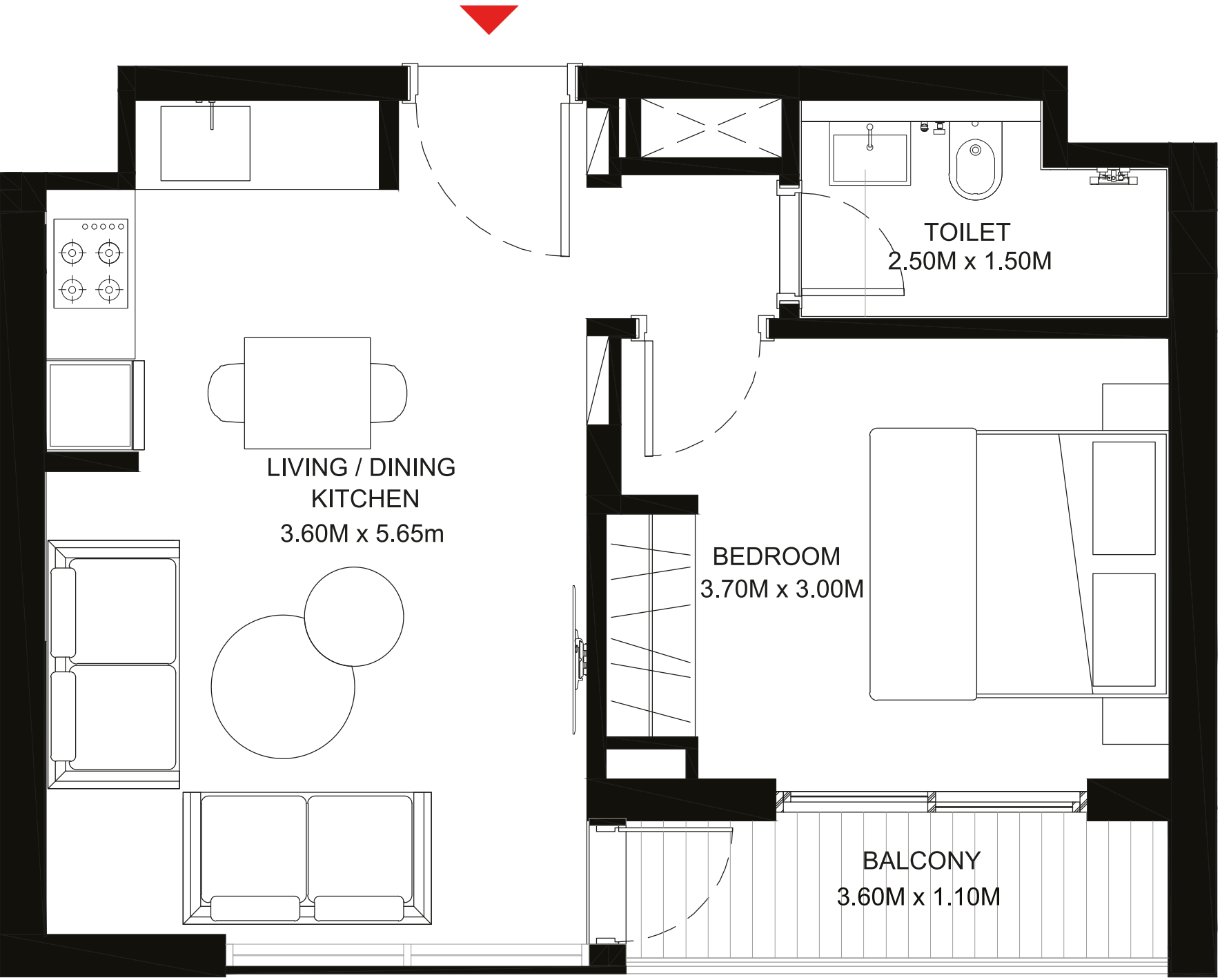
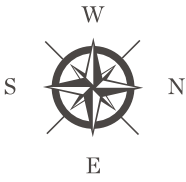
Suite Area - 444.00 Sq. Ft.

Balcony Area - 49.00 Sq. Ft.

Net Saleable Area - 493.00 Sq. Ft.



UNIT TYPE - 1A | LEVELS 2 - 28



Dubai Canal



Ras Al Khor
Wildlife Sanctuary

Disclaimer: 1. All dimensions are in metric, measured to wall finishes. 2. All materials, dimensions & drawings are approximate. 3. Information is subject to change without notice, at developer's absolute discretion. 4. Actual area may vary from the stated area. 5. Drawings are not to scale. 6. All images used are for illustrative purposes only and do not represent the actual size, features, specifications, fittings and furnishings. 7. The developer reserves the right to make revisions/ alterations, at its absolute discretion, without any liability whatsoever.



SOBHA HARTLAND

CREEK VISTAS

1 B E D R O O M A P A R T M E N T

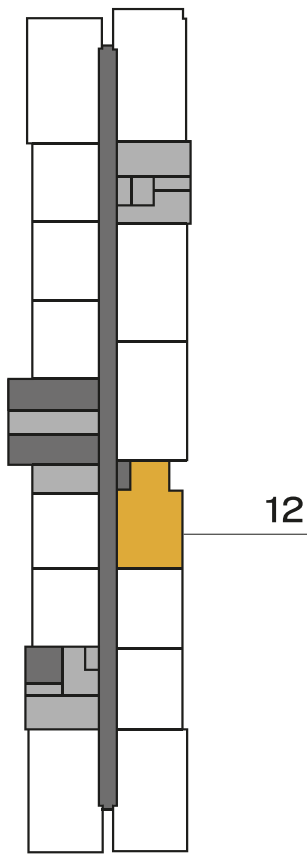
TYPE B (with balcony and study)

Ras Al Khor Wildlife Sanctuary and Canal view

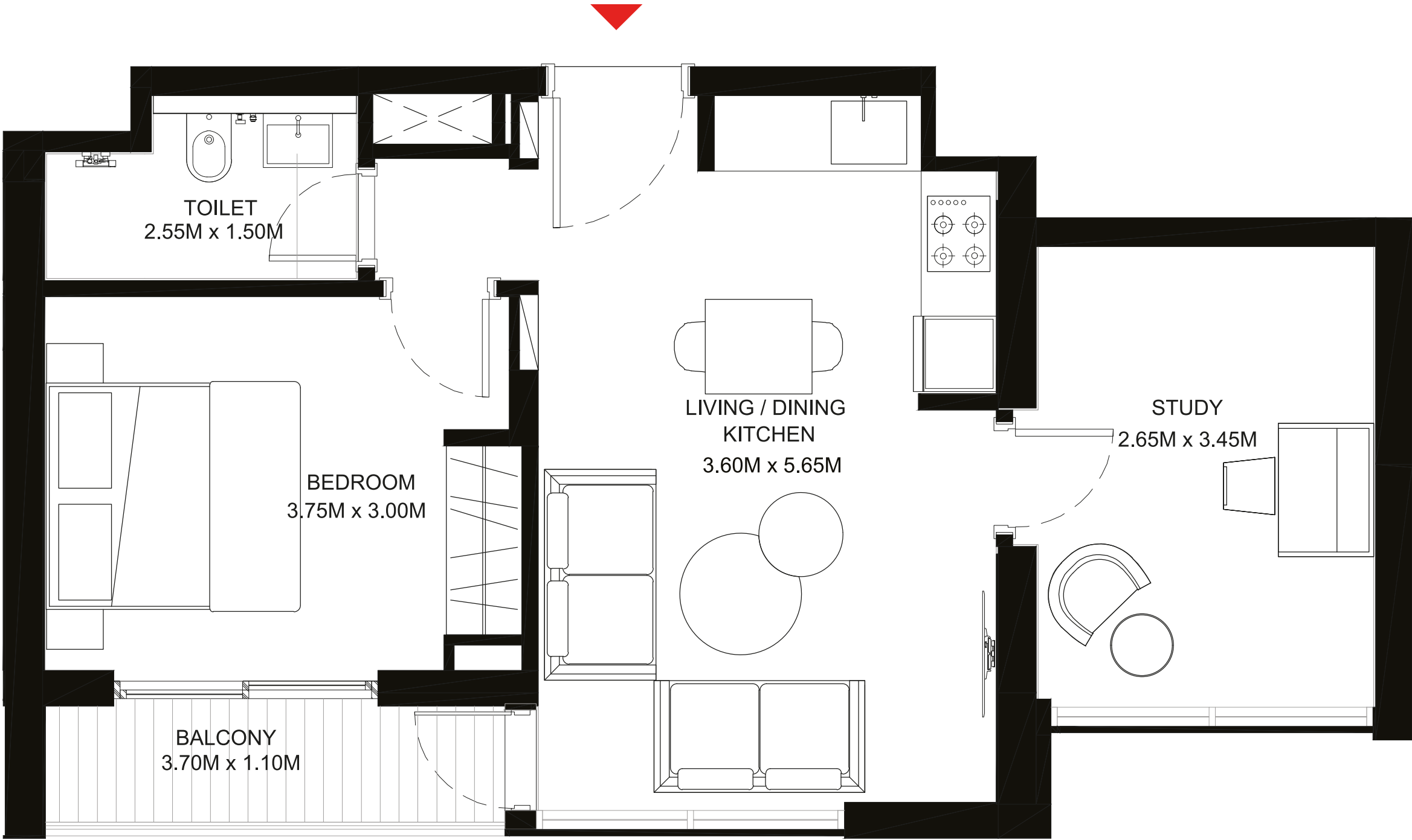
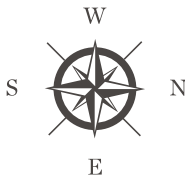
Suite Area - 562.52 Sq. Ft.

Balcony Area - 50.38 Sq. Ft.

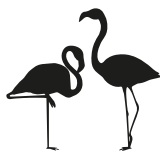
Net Saleable Area - 612.90 Sq. Ft.



UNIT TYPE - 1B | LEVELS 2 - 28



Dubai Canal



Ras Al Khor
Wildlife Sanctuary

Disclaimer: 1. All dimensions are in metric, measured to wall finishes. 2. All materials, dimensions & drawings are approximate. 3. Information is subject to change without notice, at developer's absolute discretion. 4. Actual area may vary from the stated area. 5. Drawings are not to scale. 6. All images used are for illustrative purposes only and do not represent the actual size, features, specifications, fittings and furnishings. 7. The developer reserves the right to make revisions/ alterations, at its absolute discretion, without any liability whatsoever.



SOBHA HARTLAND

CREEK VISTAS

2 BEDROOM APARTMENT

TYPE A (corner units and non-corner units, all with two balconies)

Downtown and Canal view

Suite Area - 684.15 Sq. Ft.

Balcony Area - 121.52 Sq. Ft.

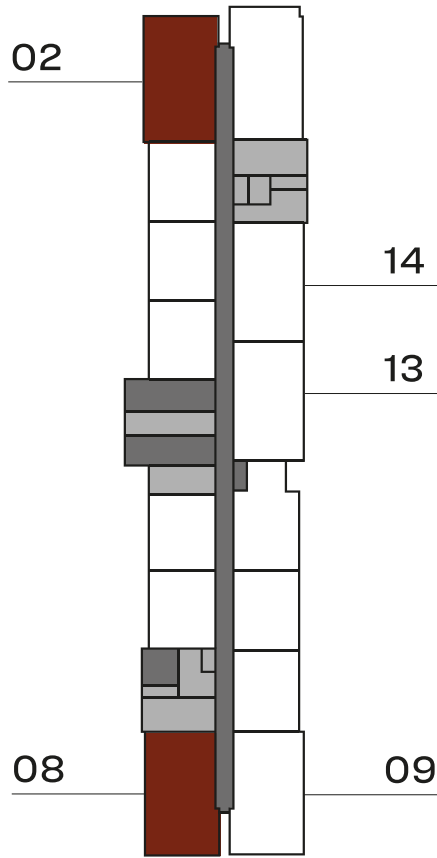
Net Saleable Area - 805.67 Sq. Ft.



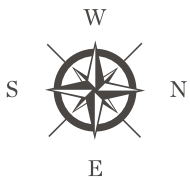
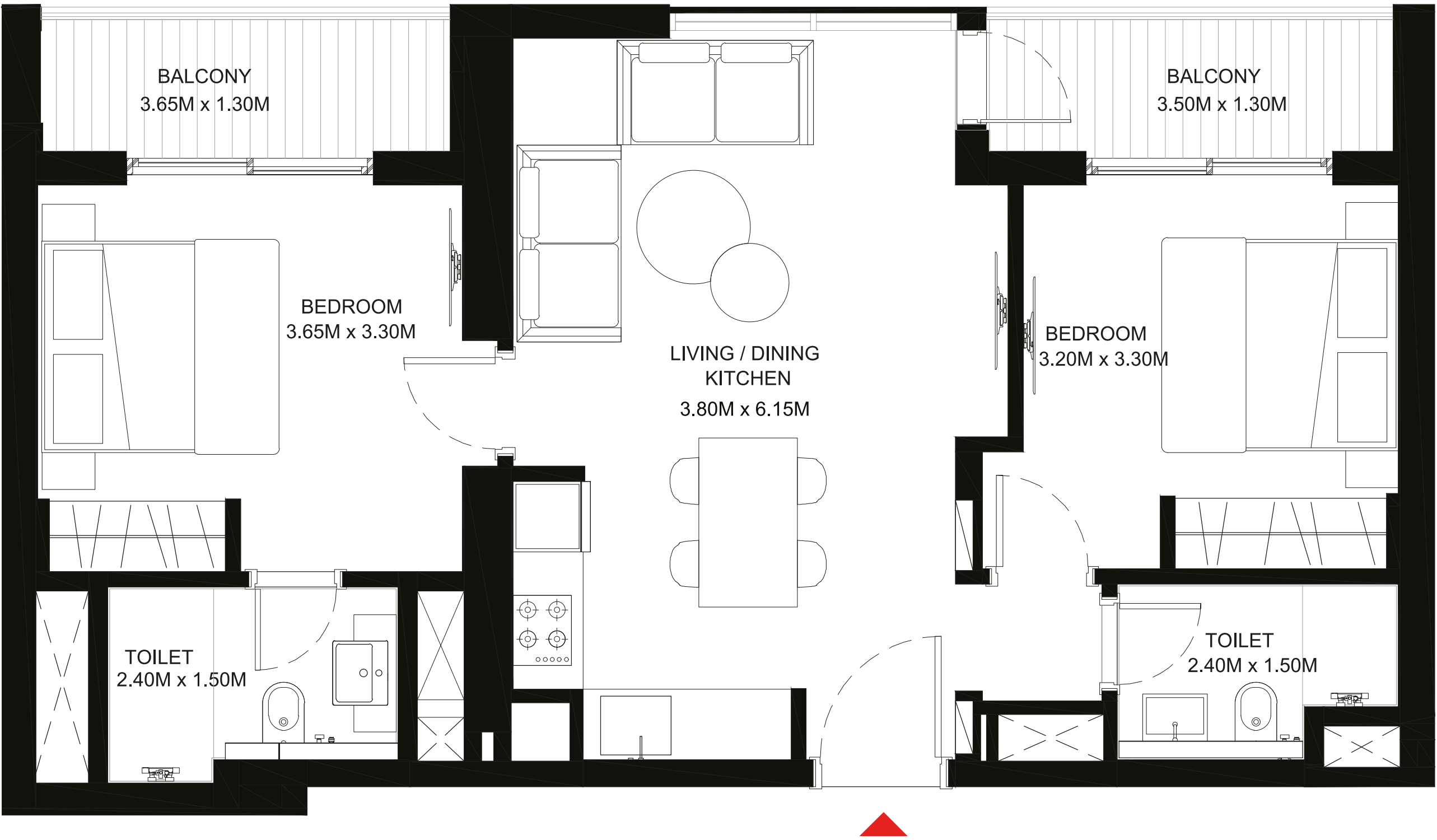
Dubai Canal



Downtown



UNIT TYPE - 2A | LEVELS 2 - 28



Disclaimer: 1. All dimensions are in metric, measured to wall finishes. 2. All materials, dimensions & drawings are approximate. 3. Information is subject to change without notice, at developer's absolute discretion. 4. Actual area may vary from the stated area. 5. Drawings are not to scale. 6. All images used are for illustrative purposes only and do not represent the actual size, features, specifications, fittings and furnishings. 7. The developer reserves the right to make revisions/ alterations, at its absolute discretion, without any liability whatsoever.



SOBHA HARTLAND

CREEK VISTAS

2 BEDROOM APARTMENT

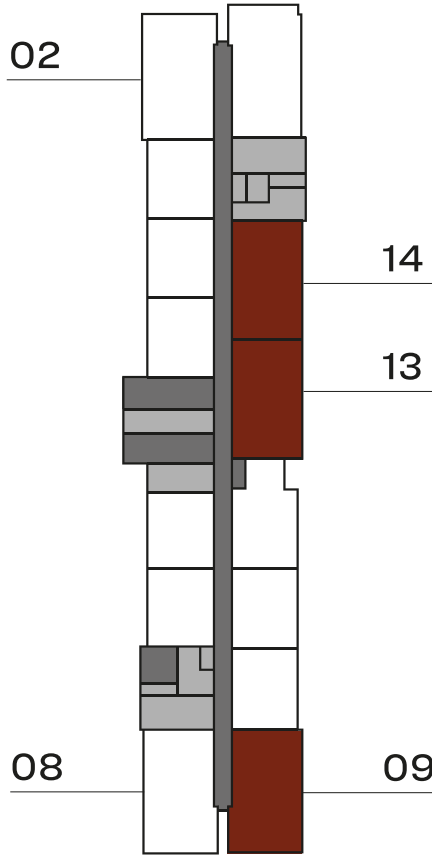
TYPE A (corner units and non-corner units, all with two balconies)

Ras Al Khor Wildlife Sanctuary and Canal view

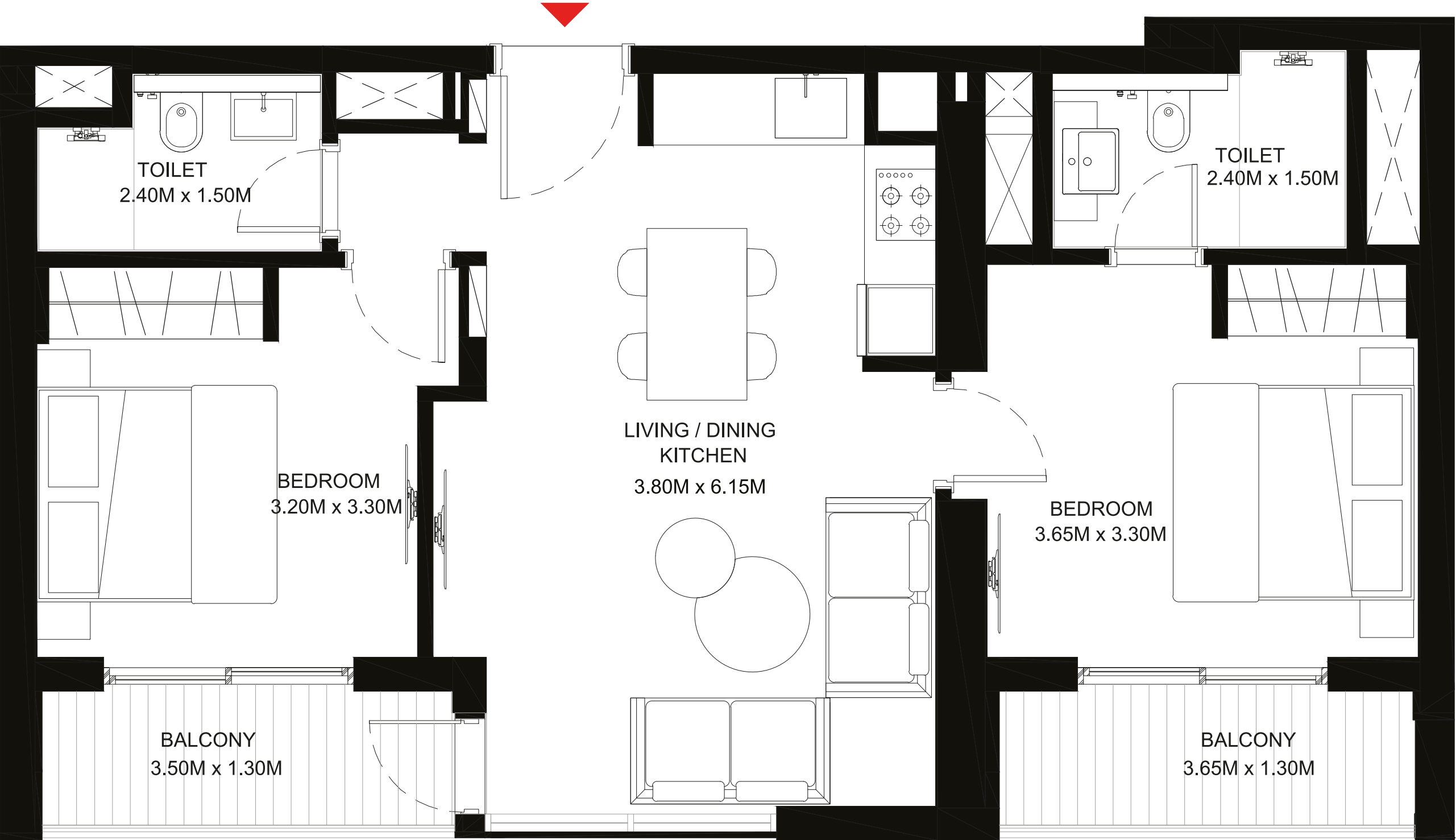
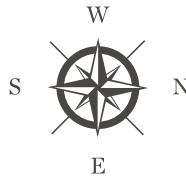
Suite Area - 685.00 Sq. Ft.

Balcony Area - 119.00 Sq. Ft.

Net Saleable Area - 804.00 Sq. Ft.



UNIT TYPE - 2A | LEVELS 2 - 28



Dubai Canal



Ras Al Khor
Wildlife Sanctuary

Disclaimer: 1. All dimensions are in metric, measured to wall finishes. 2. All materials, dimensions & drawings are approximate. 3. Information is subject to change without notice, at developer's absolute discretion. 4. Actual area may vary from the stated area. 5. Drawings are not to scale. 6. All images used are for illustrative purposes only and do not represent the actual size, features, specifications, fittings and furnishings. 7. The developer reserves the right to make revisions/ alterations, at its absolute discretion, without any liability whatsoever.



SOBHA HARTLAND
CREEK VISTAS

2 B E D R O O M A P A R T M E N T

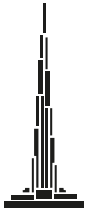
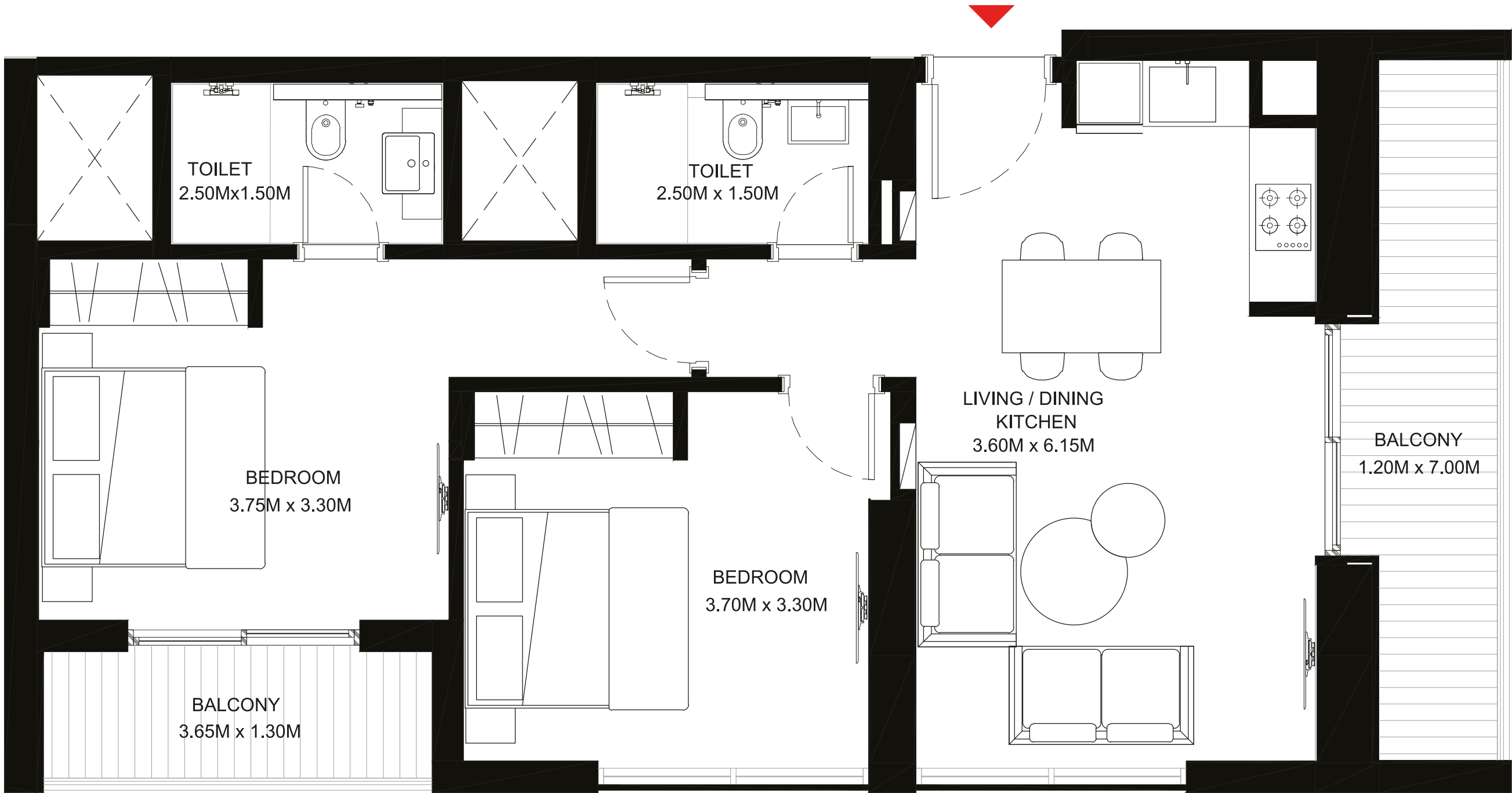
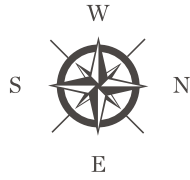
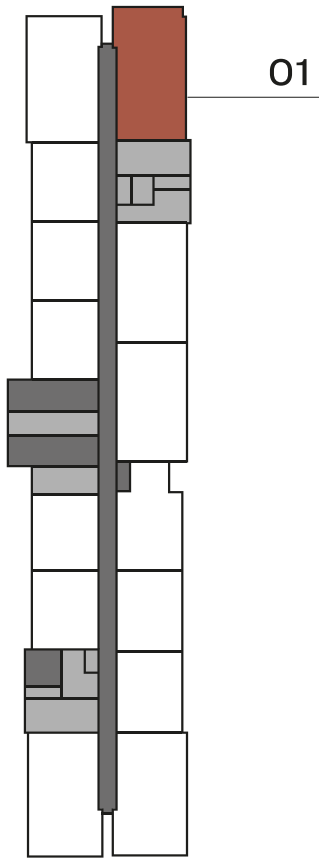
TYPE B (corner units with two balconies)

Ras Al Khor Wildlife Sanctuary, Dubai Creek, Downtown and Canal view

Suite Area - 729.00 Sq. Ft.

Balcony Area - 170.00 Sq. Ft.

Net Saleable Area - 899.00 Sq. Ft.



Downtown



Dubai Creek



Dubai Canal



Ras Al Khor
Wildlife Sanctuary

Disclaimer: 1. All dimensions are in metric, measured to wall finishes. 2. All materials, dimensions & drawings are approximate. 3. Information is subject to change without notice, at developer's absolute discretion. 4. Actual area may vary from the stated area. 5. Drawings are not to scale. 6. All images used are for illustrative purposes only and do not represent the actual size, features, specifications, fittings and furnishings. 7. The developer reserves the right to make revisions/ alterations, at its absolute discretion, without any liability whatsoever.