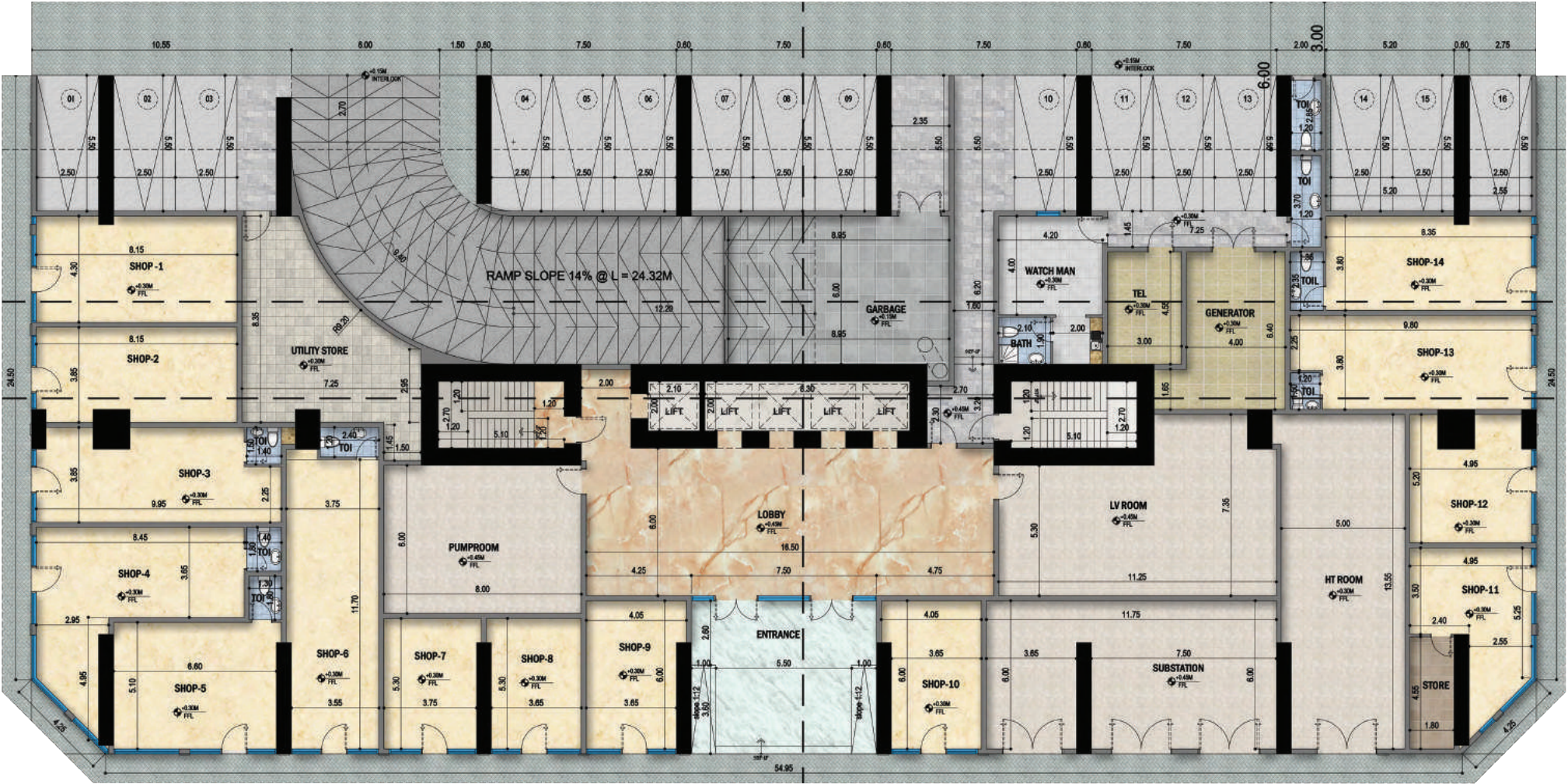




BE PART OF THE  
**FAMILY**



# GROUND FLOOR



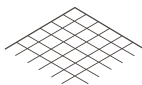
NO. OF SHOPS

14



CAR PARKING

16

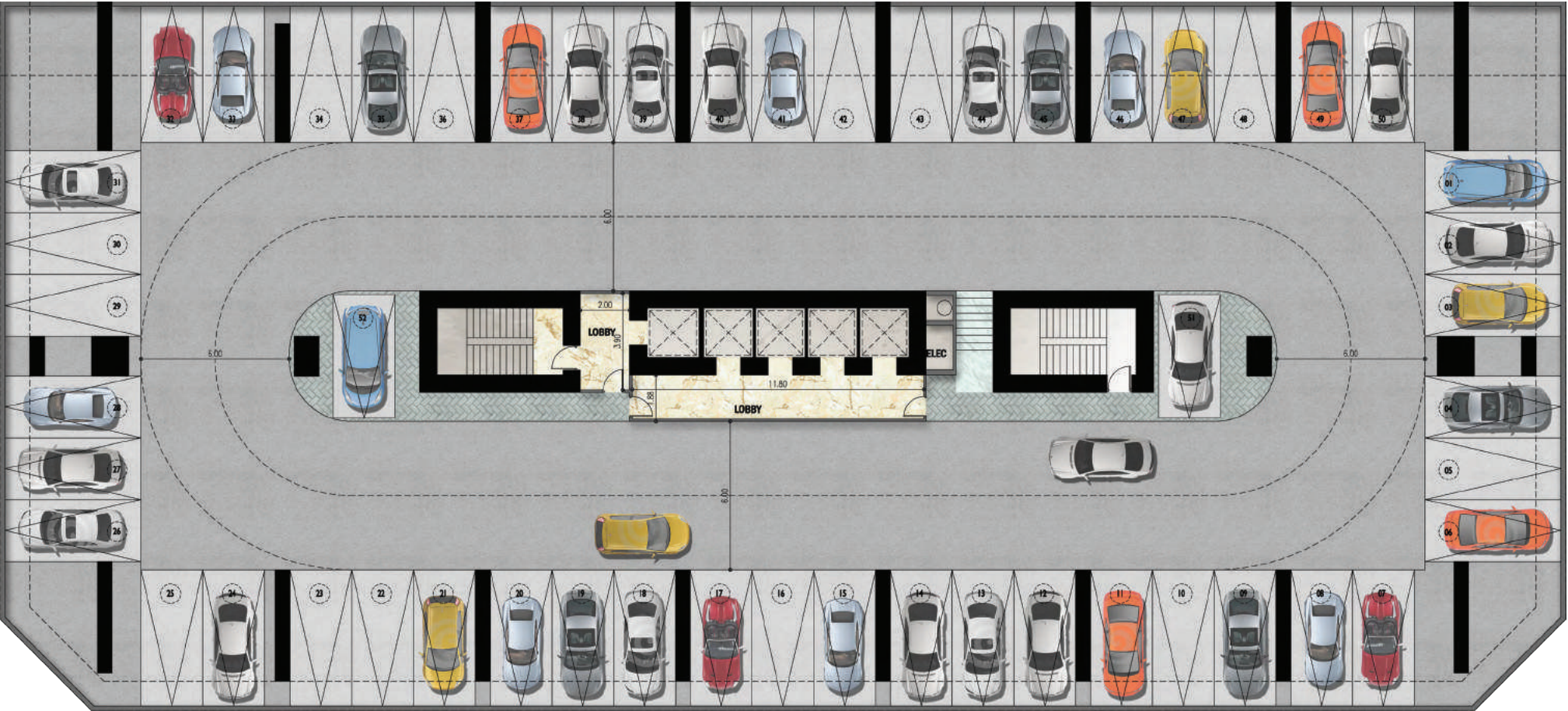


GROUND FLOOR AREA

1803.45  
SQM



# PARKING FLOOR



NO. OF CAR PARKING

12



5 CAR PARKING FLOOR  
BUILT UP AREA

9017.25  
SQM

1. All dimensions are in imperial and metric, and measurement and are measured from start to finish excluding construction tolerances. 2. All materials, dimensions, and drawings are approximate only. 3. Above information is subject to change without notice and is at developer's absolute discretion. 4. Actual area may vary from the stated area. 5. All images used are for illustrative purposes only and do not represent the actual size, features, specifications, fittings, and furnishings. 6. The developer reserves the right to make revisions / alterations, at it's absolute discretion, without any liability whatsoever.



# HEALTH CLUB FLOOR PLAN



HEALTH CLUB FLOOR AREA

1803.45  
SQM

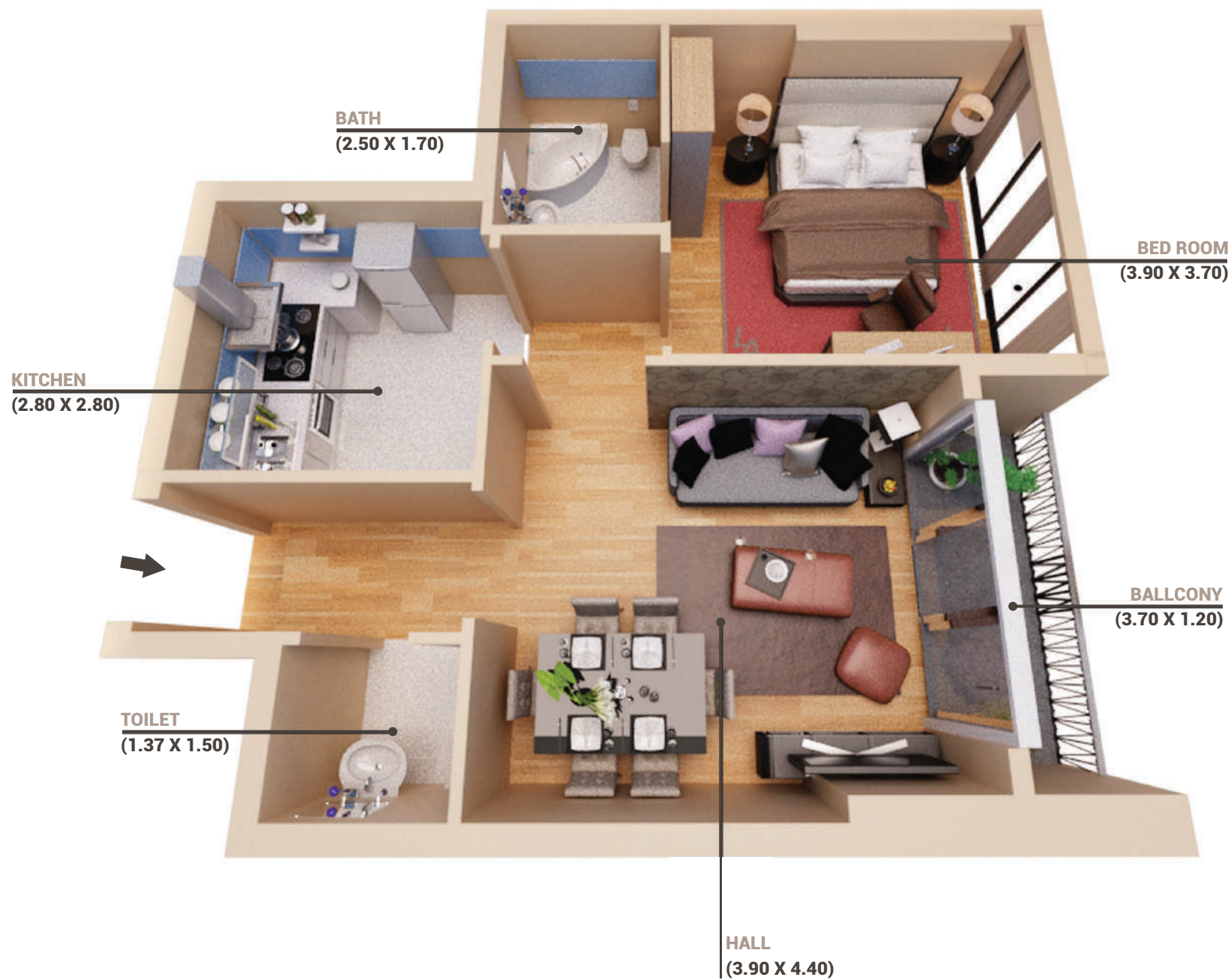
TYPICAL FLOOR

FLAT NO. 12 1 BED ROOM	Gross Area (sq m)	-	80.18
	Gross Area (Sq ft)	-	863.03
FLAT NO. 11 2 BED ROOM	Gross Area (sq m)	-	122.47
	Gross Area (Sq ft)	-	1318.31
FLAT NO. 10 2 BED ROOM	Gross Area (sq m)	-	123.59
	Gross Area (Sq ft)	-	1330.32
FLAT NO. 9 1 BED ROOM	Gross Area (sq m)	-	79.94
	Gross Area (Sq ft)	-	860.46
FLAT NO. 8 2 BED ROOM	Gross Area (sq m)	-	121.75
	Gross Area (Sq ft)	-	1310.48
FLAT NO. 7 1 BED ROOM	Gross Area (sq m)	-	78.05
	Gross Area (Sq ft)	-	840.08
FLAT NO. 6 1 BED ROOM	Gross Area (sq m)	-	82.82
	Gross Area (Sq ft)	-	891.52
FLAT NO. 5 2 BED ROOM	Gross Area (sq m)	-	122.44
	Gross Area (Sq ft)	-	1317.90
FLAT NO. 4 1 BED ROOM	Gross Area (sq m)	-	79.83
	Gross Area (Sq ft)	-	859.25
FLAT NO. 3 2 BED ROOM	Gross Area (sq m)	-	130.71
	Gross Area (Sq ft)	-	1407.01
FLAT NO. 2 3 BED ROOM	Gross Area (sq m)	-	168.82
	Gross Area (Sq ft)	-	1817.20
FLAT NO. 1 2 BED ROOM	Gross Area (sq m)	-	116.95
	Gross Area (Sq ft)	-	1258.90

23RD TYPICAL FLOOR

FLAT NO. 1 2 BED ROOM	Gross Area (sq m)	-	159.74
	Gross Area (Sq ft)	-	1719.44
FLAT NO. 2 3 BED ROOM	Gross Area (sq m)	-	167.19
	Gross Area (Sq ft)	-	1799.67
FLAT NO. 3 3 BED ROOM	Gross Area (sq m)	-	165.65
	Gross Area (Sq ft)	-	1783.03
FLAT NO. 4 3 BED ROOM	Gross Area (sq m)	-	170.05
	Gross Area (Sq ft)	-	1830.39
FLAT NO. 5 2 BED ROOM	Gross Area (sq m)	-	151.05
	Gross Area (Sq ft)	-	1625.92
FLAT NO. 6 3 BED ROOM	Gross Area (sq m)	-	169.41
	Gross Area (Sq ft)	-	1823.55
FLAT NO. 7 3 BED ROOM	Gross Area (sq m)	-	154.44
	Gross Area (Sq ft)	-	1662.42
FLAT NO. 8 3 BED ROOM	Gross Area (sq m)	-	170.35
	Gross Area (Sq ft)	-	1833.61





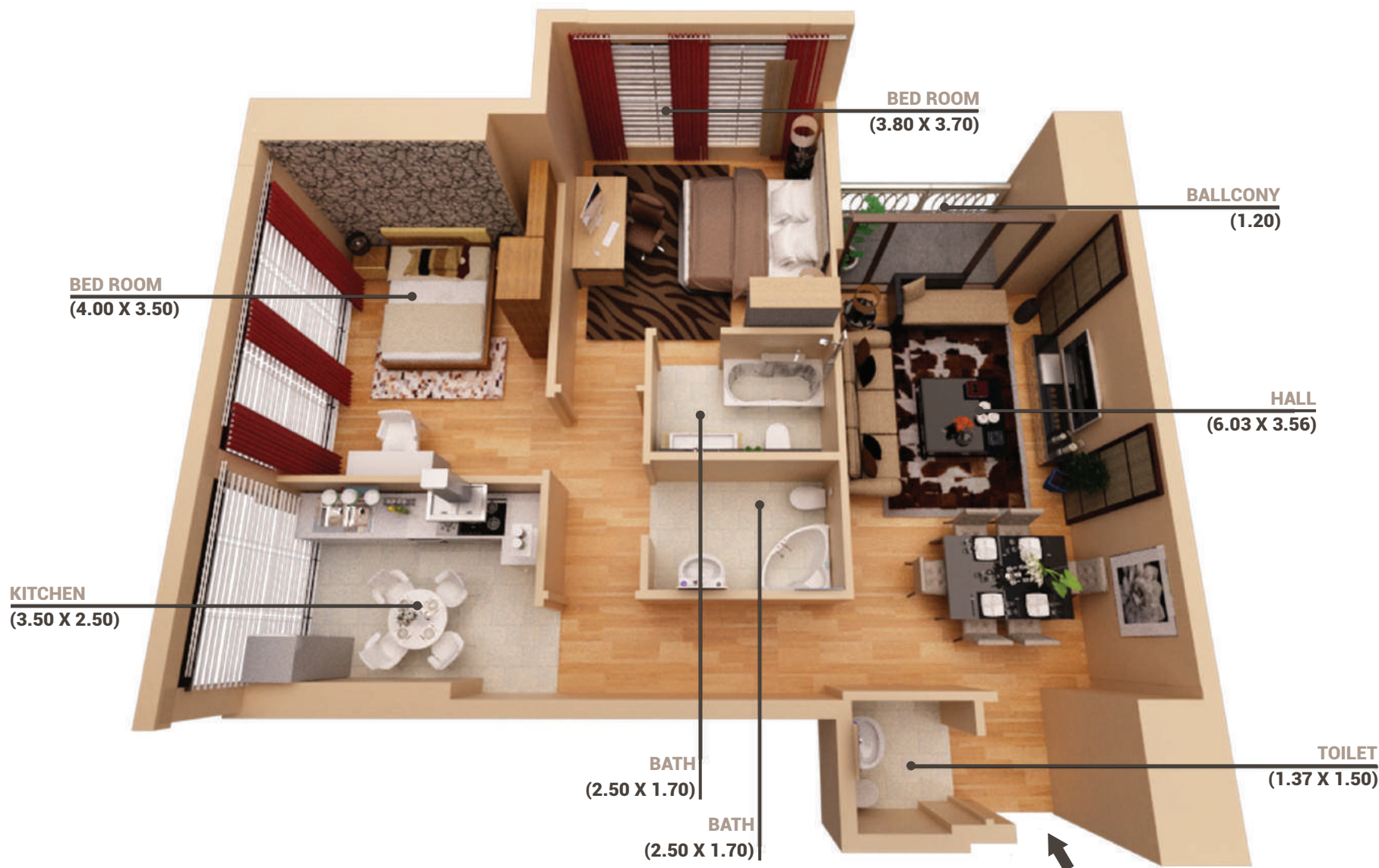
## TYPICAL FLOOR

FLAT NO. 12

1 BED ROOM

Gross Area (sq m)	-	80.18
Gross Area (Sq ft)	-	863.03





## TYPICAL FLOOR

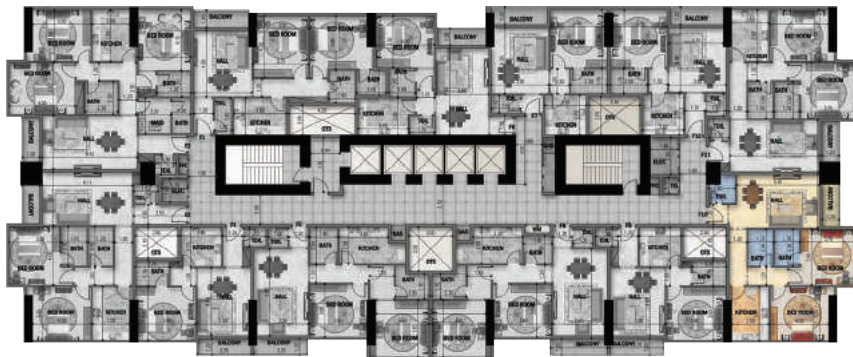
FLAT NO. 11

2 BED ROOM

Gross Area (sq m)	-	122.47
Gross Area (Sq ft)	-	1318.31

1. All dimensions are in imperial and metric, and measurement and are measured from start to finish excluding construction tolerances. 2. All materials, dimensions, and drawings are approximate only. 3. Above information is subject to change without notice and is at developer's absolute discretion. 4. Actual area may vary from the stated area. 5. All images used are for illustrative purposes only and do not represent the actual size, features, specifications, fittings, and furnishings. 6. The developer reserves the right to make revisions / alterations, at it's absolute discretion, without any liability whatsoever.



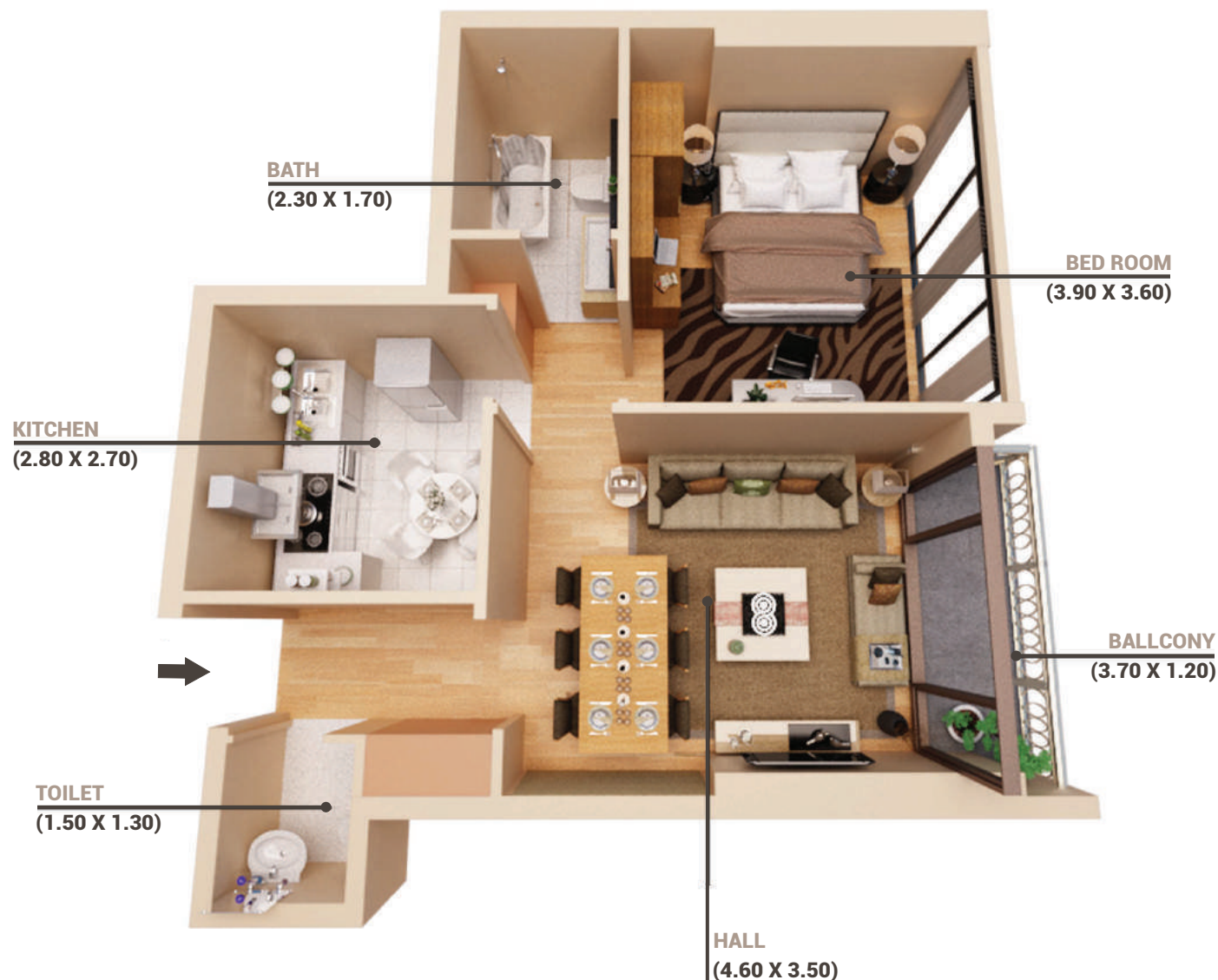


## TYPICAL FLOOR

FLAT NO. 10

2 BED ROOM

Gross Area (sq m)	-	123.59
Gross Area (Sq ft)	-	1330.32



## TYPICAL FLOOR

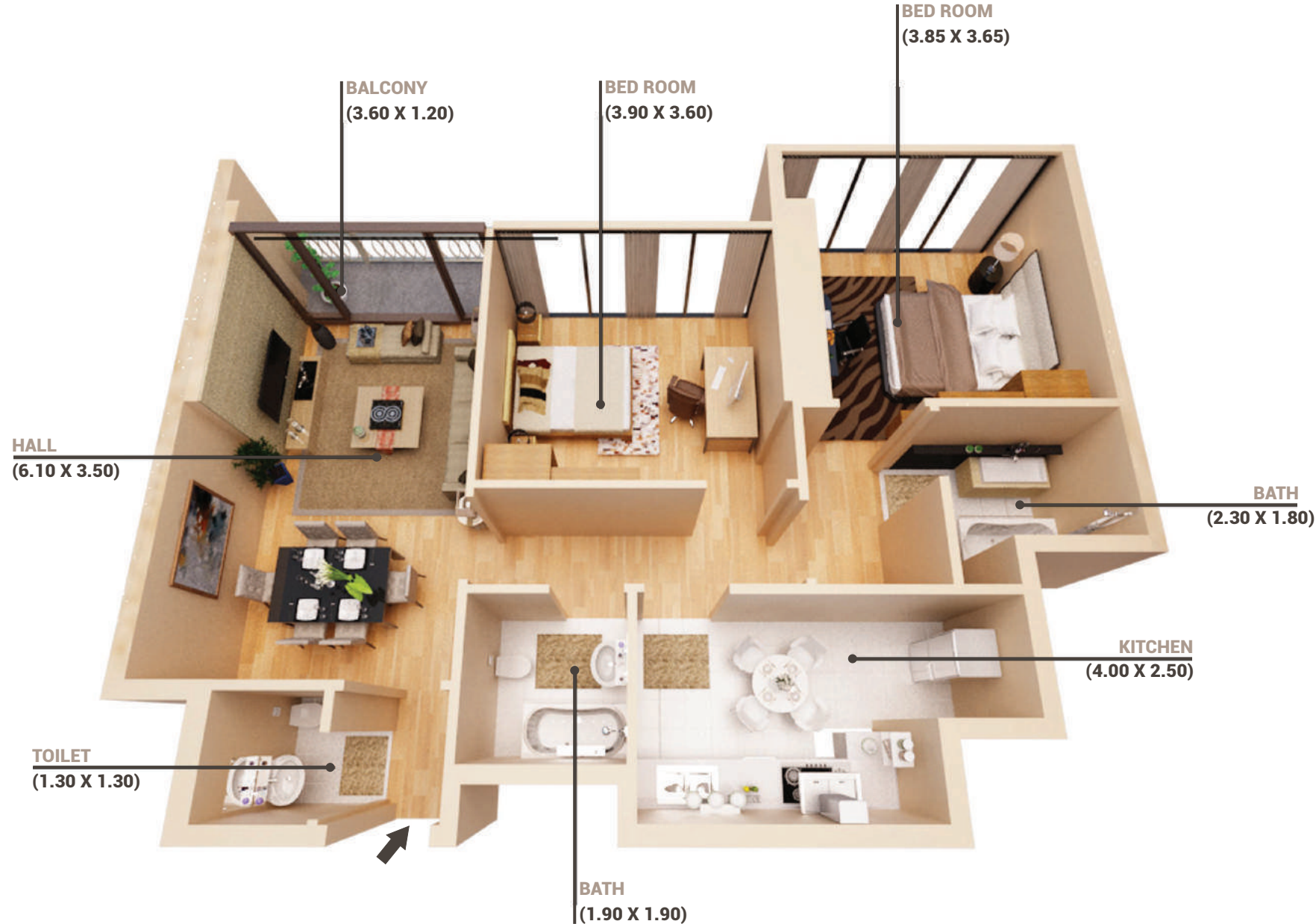
FLAT NO. 9

1 BED ROOM

Gross Area (sq m)	-	79.94
Gross Area (Sq ft)	-	860.46

1. All dimensions are in imperial and metric, and measurement and are measured from start to finish excluding construction tolerances. 2. All materials, dimensions, and drawings are approximate only. 3. Above information is subject to change without notice and is at developer's absolute discretion. 4. Actual area may vary from the stated area. 5. All images used are for illustrative purposes only and do not represent the actual size, features, specifications, fittings, and furnishings. 6. The developer reserves the right to make revisions / alterations, at it's absolute discretion, without any liability whatsoever.



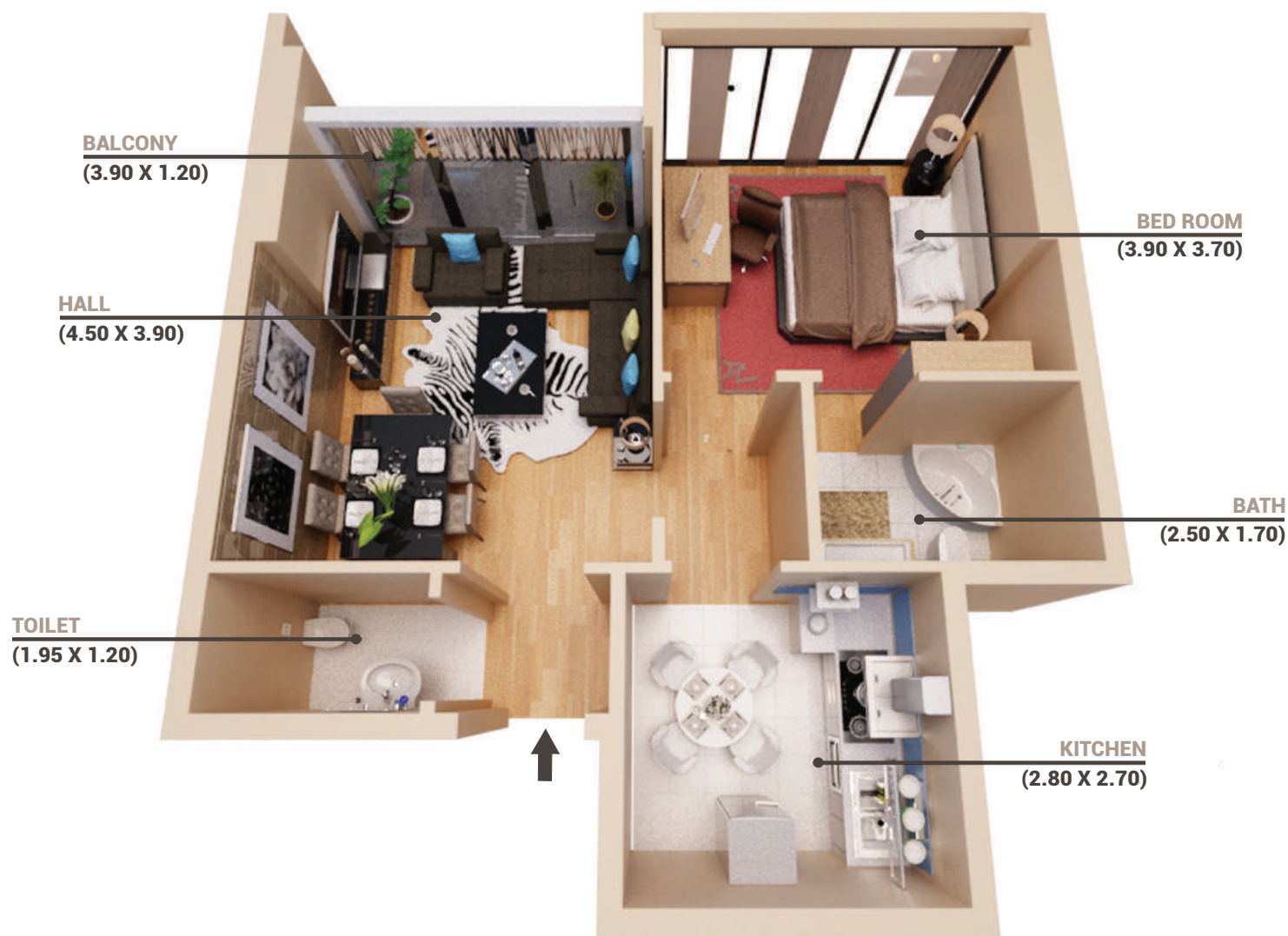


**TYPICAL FLOOR**

FLAT NO. 8

2 BED ROOM

Gross Area (sq m)	-	121.75
Gross Area (Sq ft)	-	1310.48



## TYPICAL FLOOR

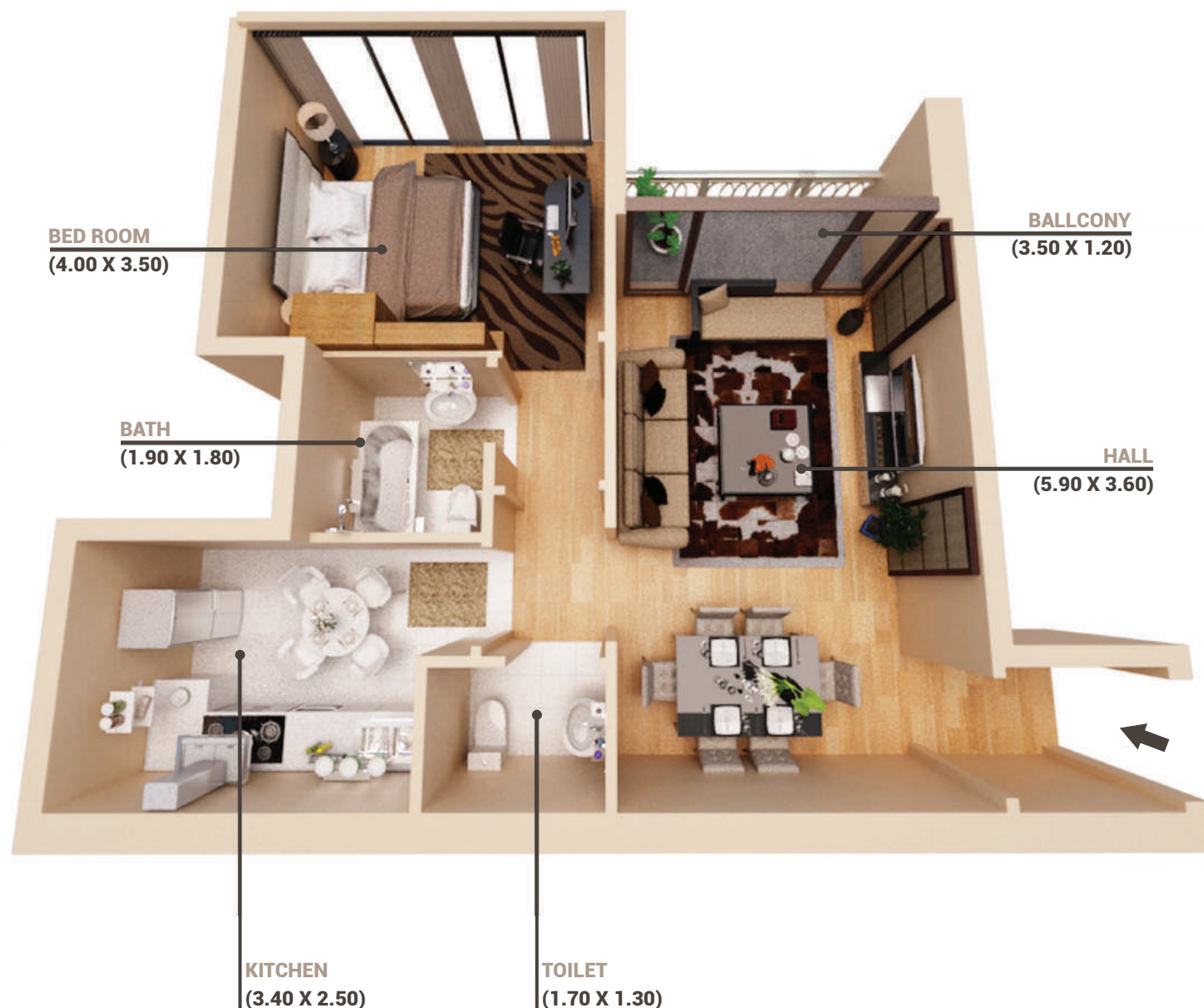
FLAT NO 7

1 BED ROOM

Gross Area (sq m)	-	78.05
Gross Area (Sq ft)	-	840.08

1. All dimensions are in imperial and metric, and measurement and are measured from start to finish excluding construction tolerances. 2. All materials, dimensions, and drawings are approximate only. 3. Above information is subject to change without notice and is at developer's absolute discretion. 4. Actual area may vary from the stated area. 5. All images used are for illustrative purposes only and do not represent the actual size, features, specifications, fittings, and furnishings. 6. The developer reserves the right to make revisions / alterations, at it's absolute discretion, without any liability whatsoever.



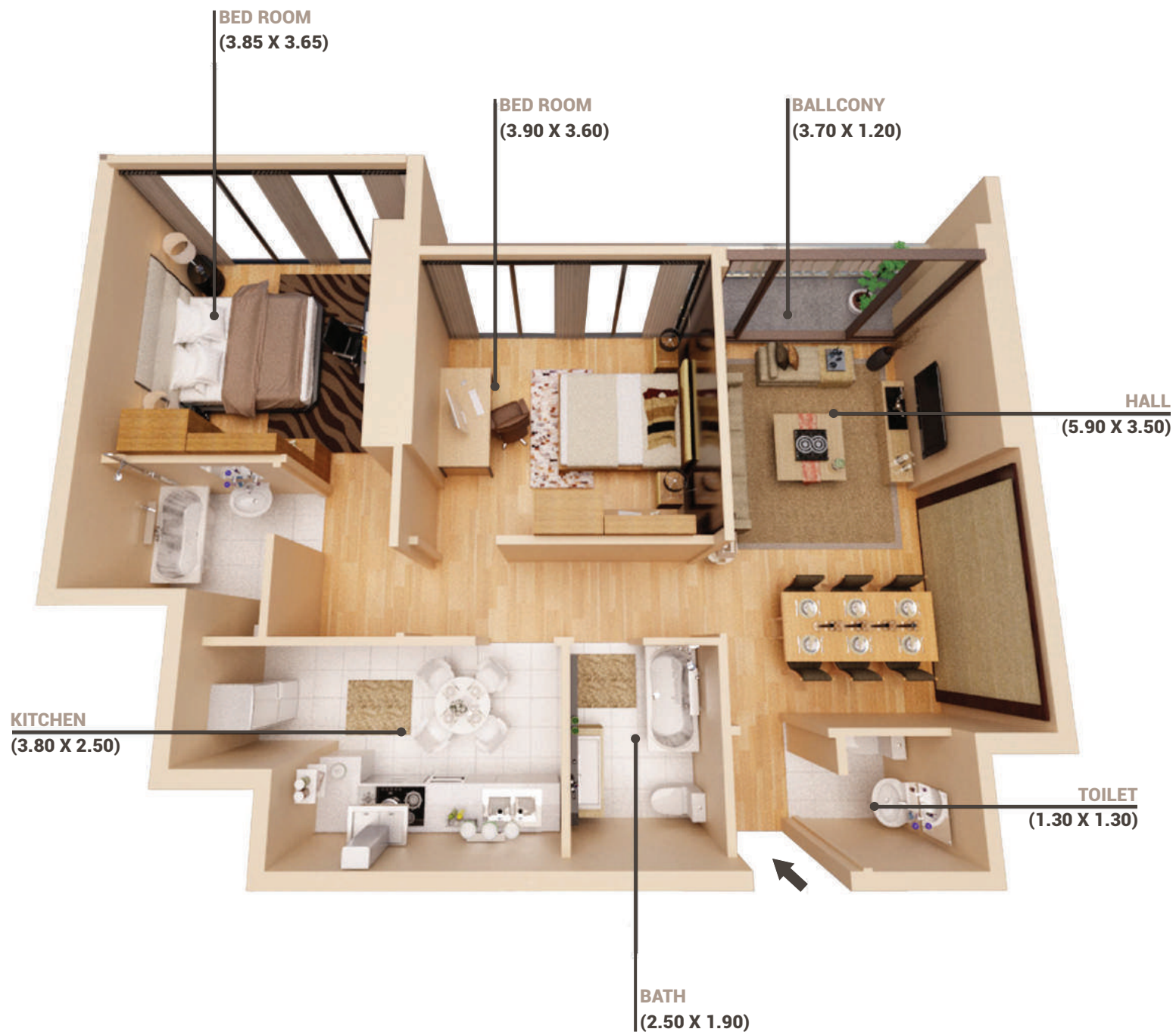


## TYPICAL FLOOR

FLAT NO. 6

1 BED ROOM

Gross Area (sq m)	-	82.82
Gross Area (Sq ft)	-	891.52



## TYPICAL FLOOR

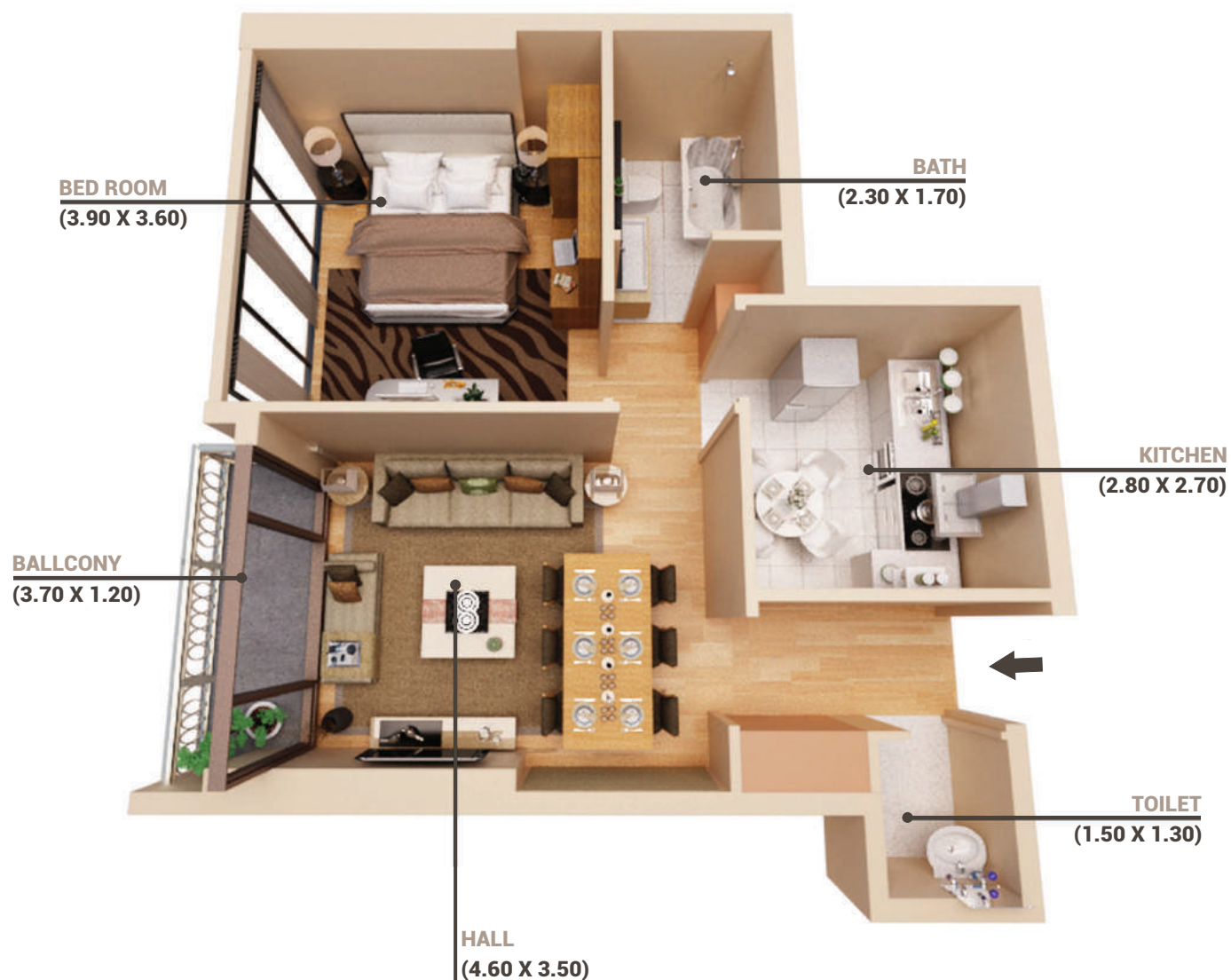
FLAT NO. 5

2 BED ROOM

Gross Area (sq m)	-	122.44
Gross Area (Sq ft)	-	1317.90

1. All dimensions are in imperial and metric, and measurement and are measured from start to finish excluding construction tolerances. 2. All materials, dimensions, and drawings are approximate only. 3. Above information is subject to change without notice and is at developer's absolute discretion. 4. Actual area may vary from the stated area. 5. All images used are for illustrative purposes only and do not represent the actual size, features, specifications, fittings, and furnishings. 6. The developer reserves the right to make revisions / alterations, at it's absolute discretion, without any liability whatsoever.



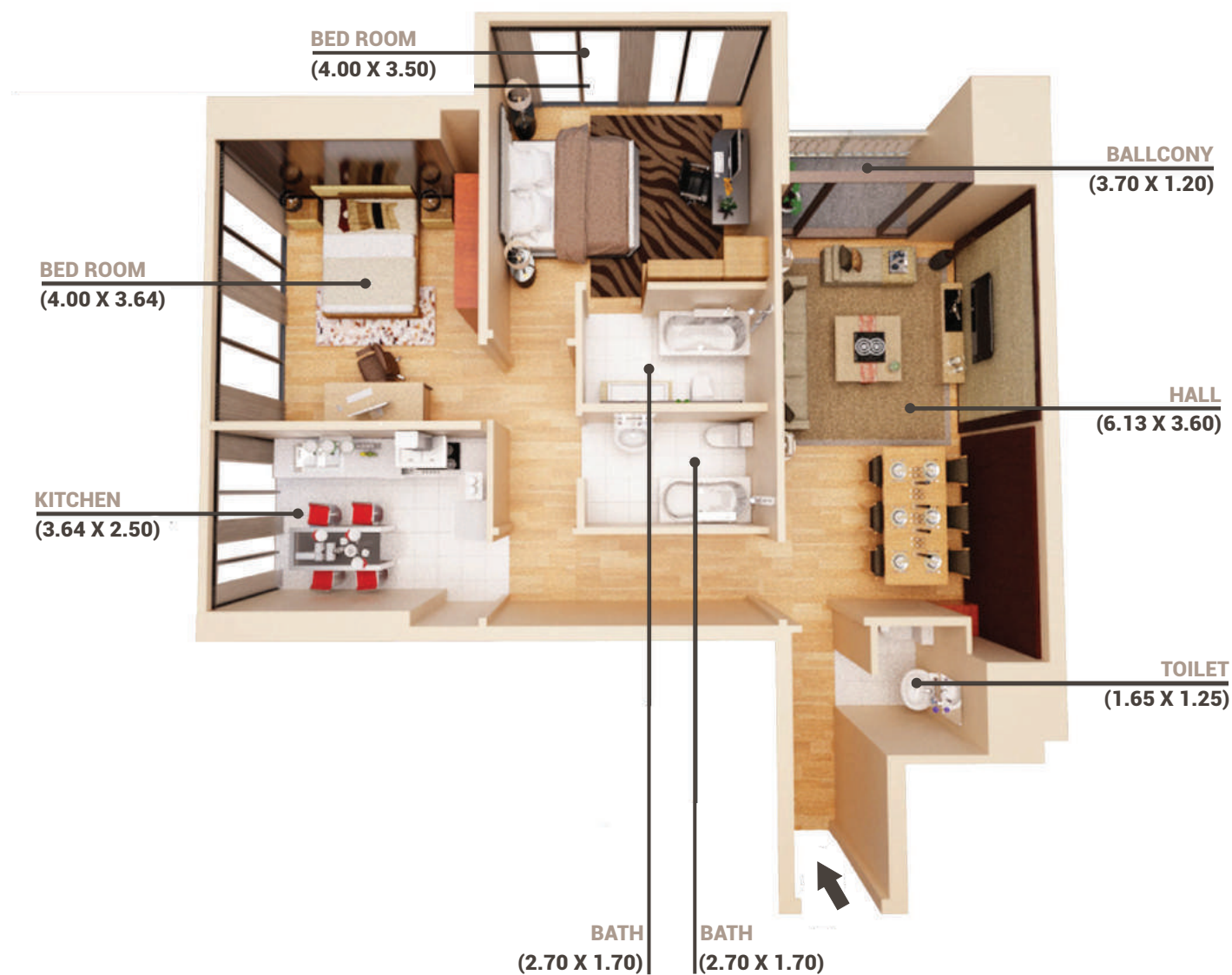


## TYPICAL FLOOR

FLAT NO. 4

1 BED ROOM

Gross Area (sq m)	-	79.83
Gross Area (Sq ft)	-	859.25



## TYPICAL FLOOR

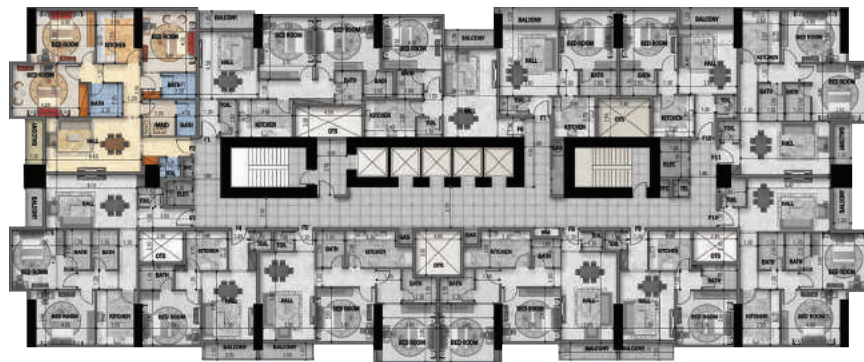
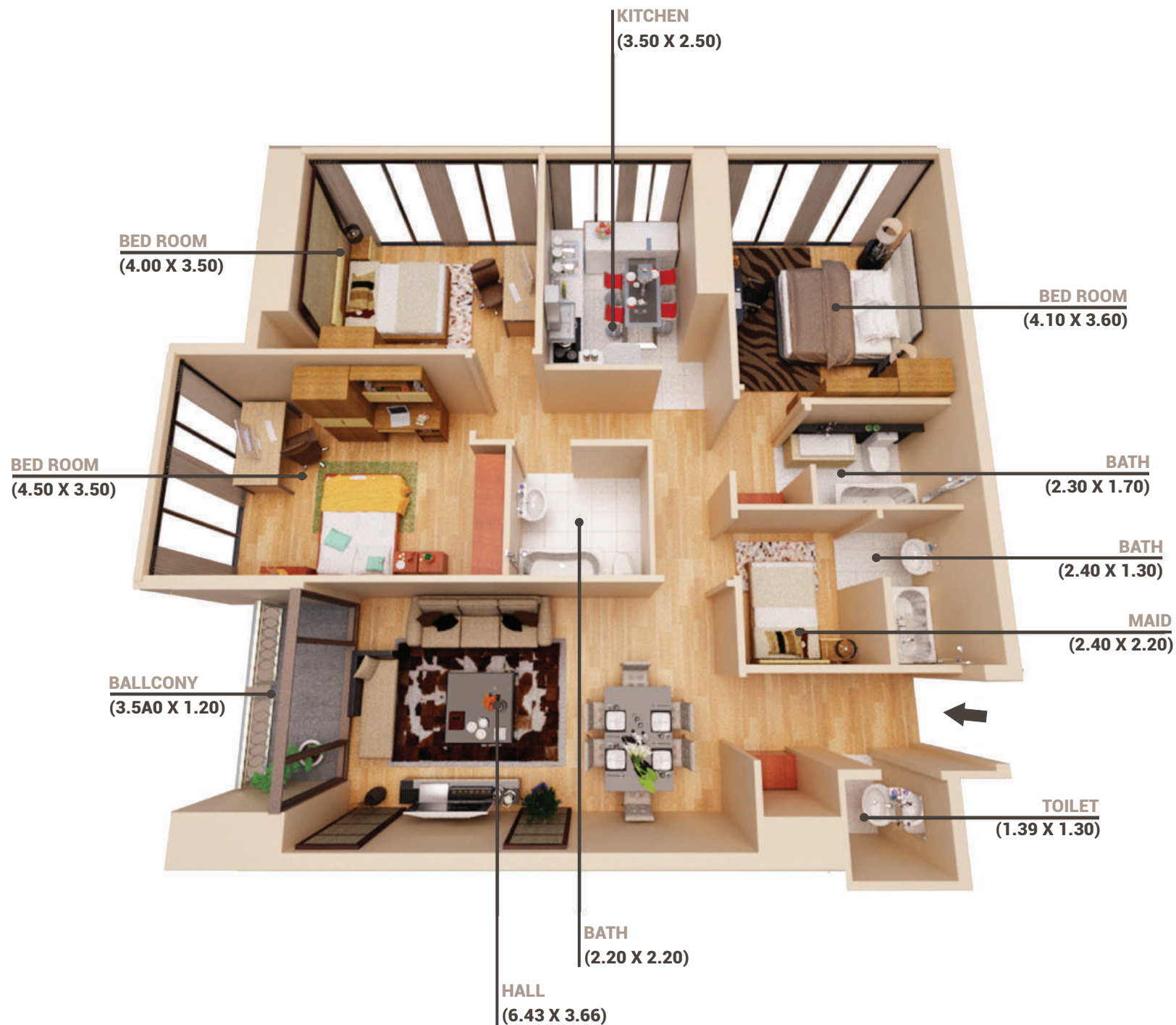
FLAT NO. 3

2 BED ROOM

Gross Area (sq m)	-	130.71
Gross Area (Sq ft)	-	1407.01

1. All dimensions are in imperial and metric, and measurement and are measured from start to finish excluding construction tolerances. 2. All materials, dimensions, and drawings are approximate only. 3. Above information is subject to change without notice and is at developer's absolute discretion. 4. Actual area may vary from the stated area. 5. All images used are for illustrative purposes only and do not represent the actual size, features, specifications, fittings, and furnishings. 6. The developer reserves the right to make revisions / alterations, at it's absolute discretion, without any liability whatsoever.



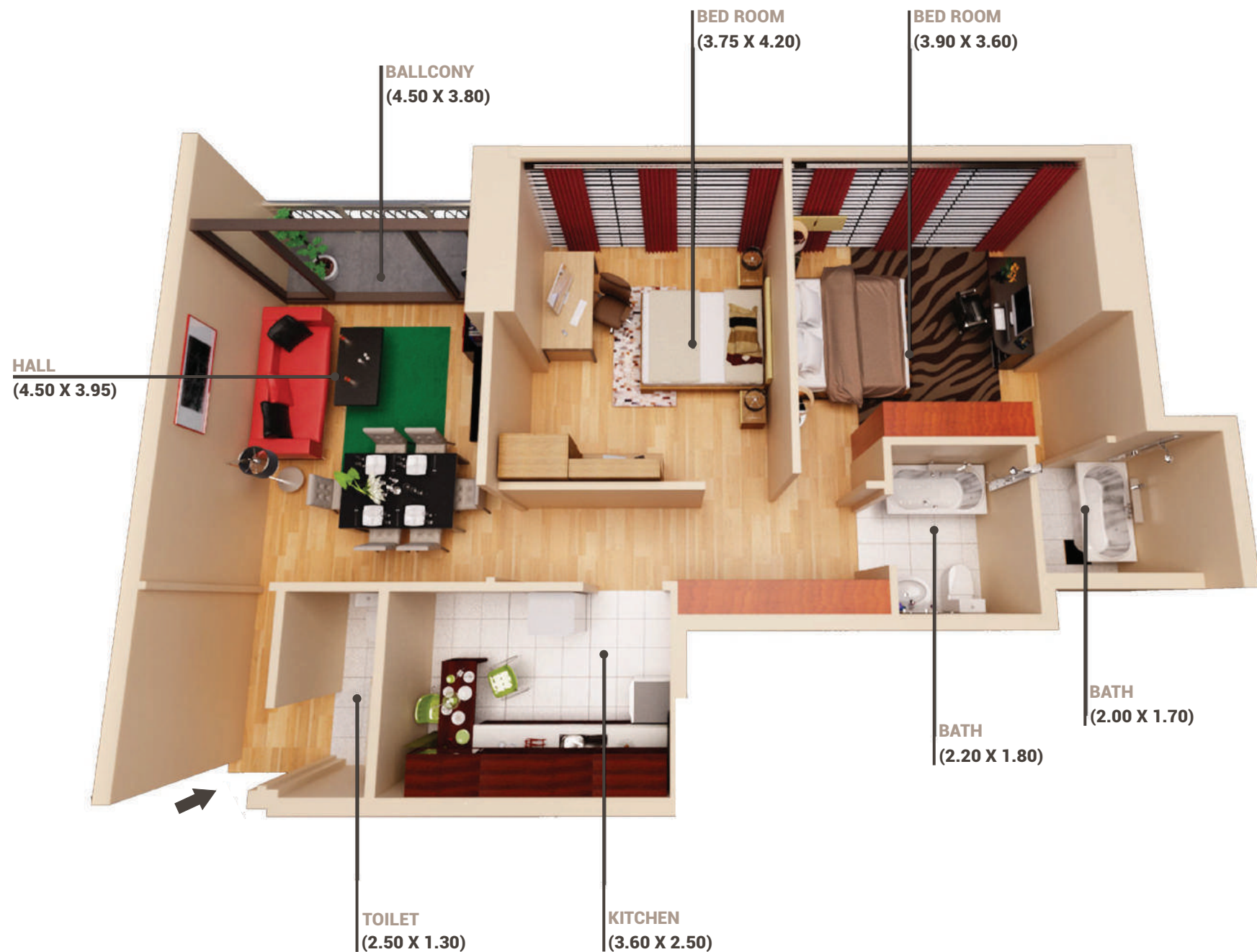


## TYPICAL FLOOR

FLAT NO. 2

3 BED ROOM

Gross Area (sq m)	-	168.82
Gross Area (Sq ft)	-	1817.20



## TYPICAL FLOOR

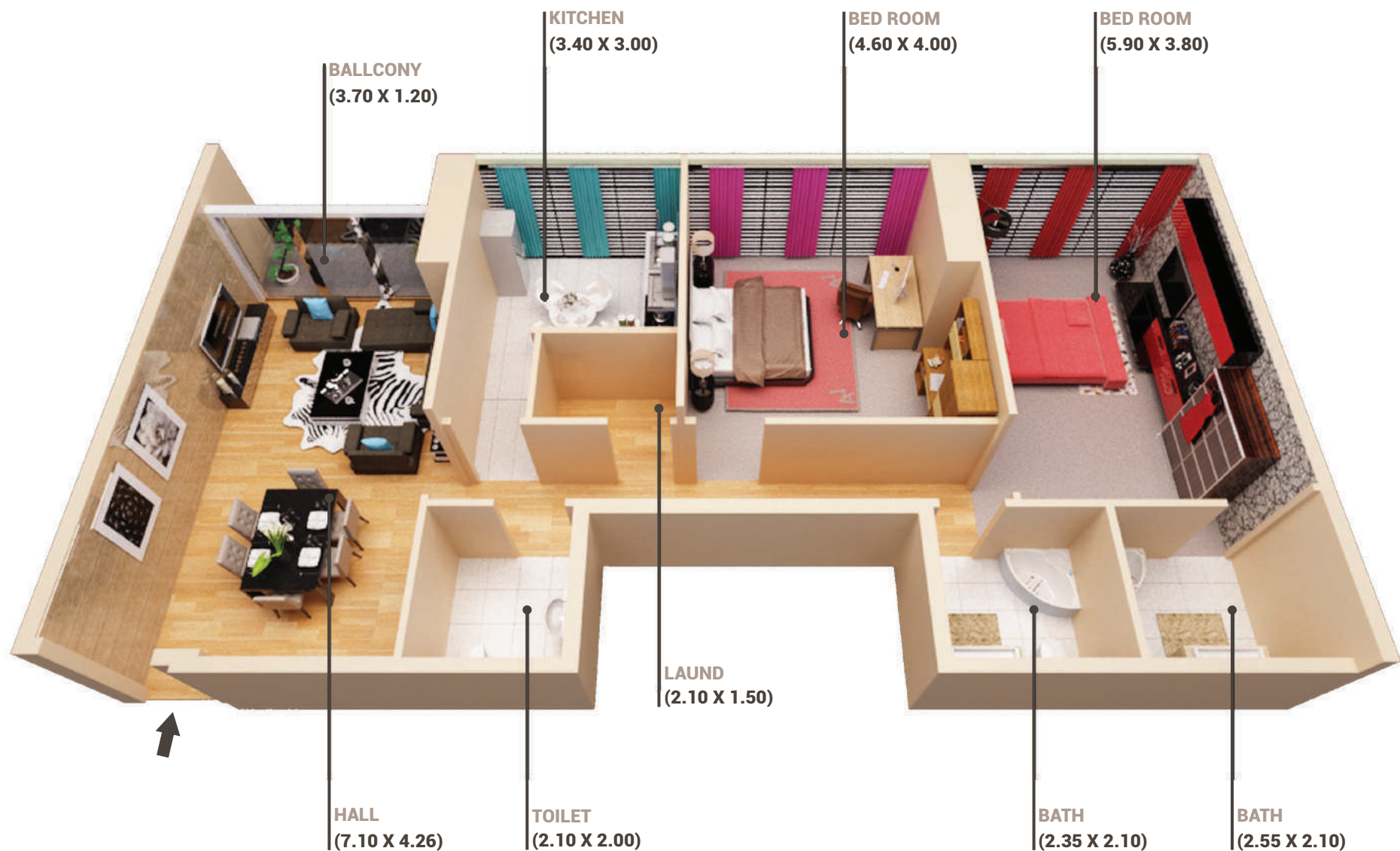
FLAT NO. 1

2 BED ROOM

Gross Area (sq m)	-	116.95
Gross Area (Sq ft)	-	1258.90

1. All dimensions are in imperial and metric, and measurement and are measured from start to finish excluding construction tolerances. 2. All materials, dimensions, and drawings are approximate only. 3. Above information is subject to change without notice and is at developer's absolute discretion. 4. Actual area may vary from the stated area. 5. All images used are for illustrative purposes only and do not represent the actual size, features, specifications, fittings, and furnishings. 6. The developer reserves the right to make revisions / alterations, at it's absolute discretion, without any liability whatsoever.



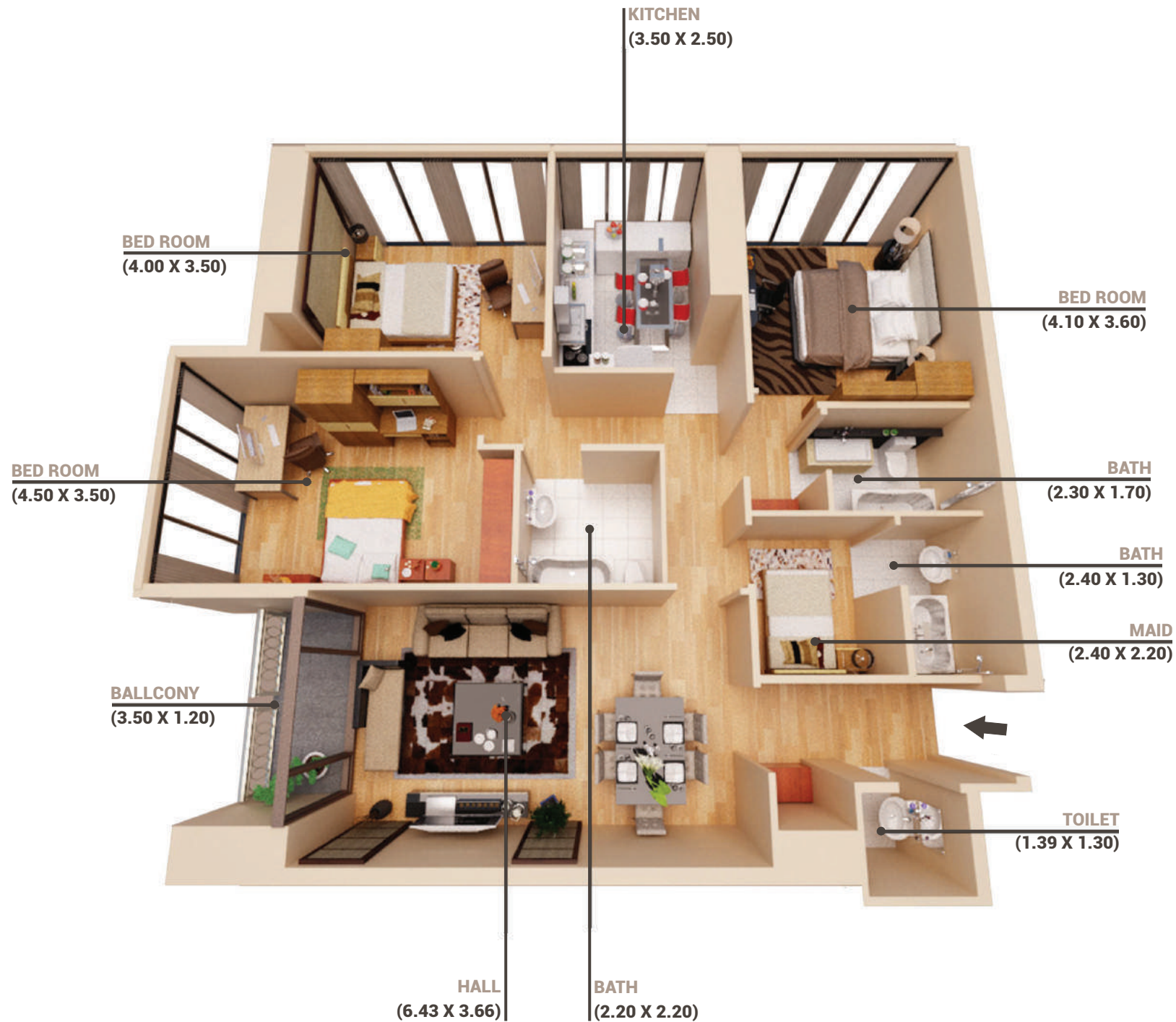


## 23RD TYPICAL FLOOR

FLAT NO. 1

2 BED ROOM

Gross Area (sq m)	-	159.74
Gross Area (Sq ft)	-	1719.44



## 23RD TYPICAL FLOOR

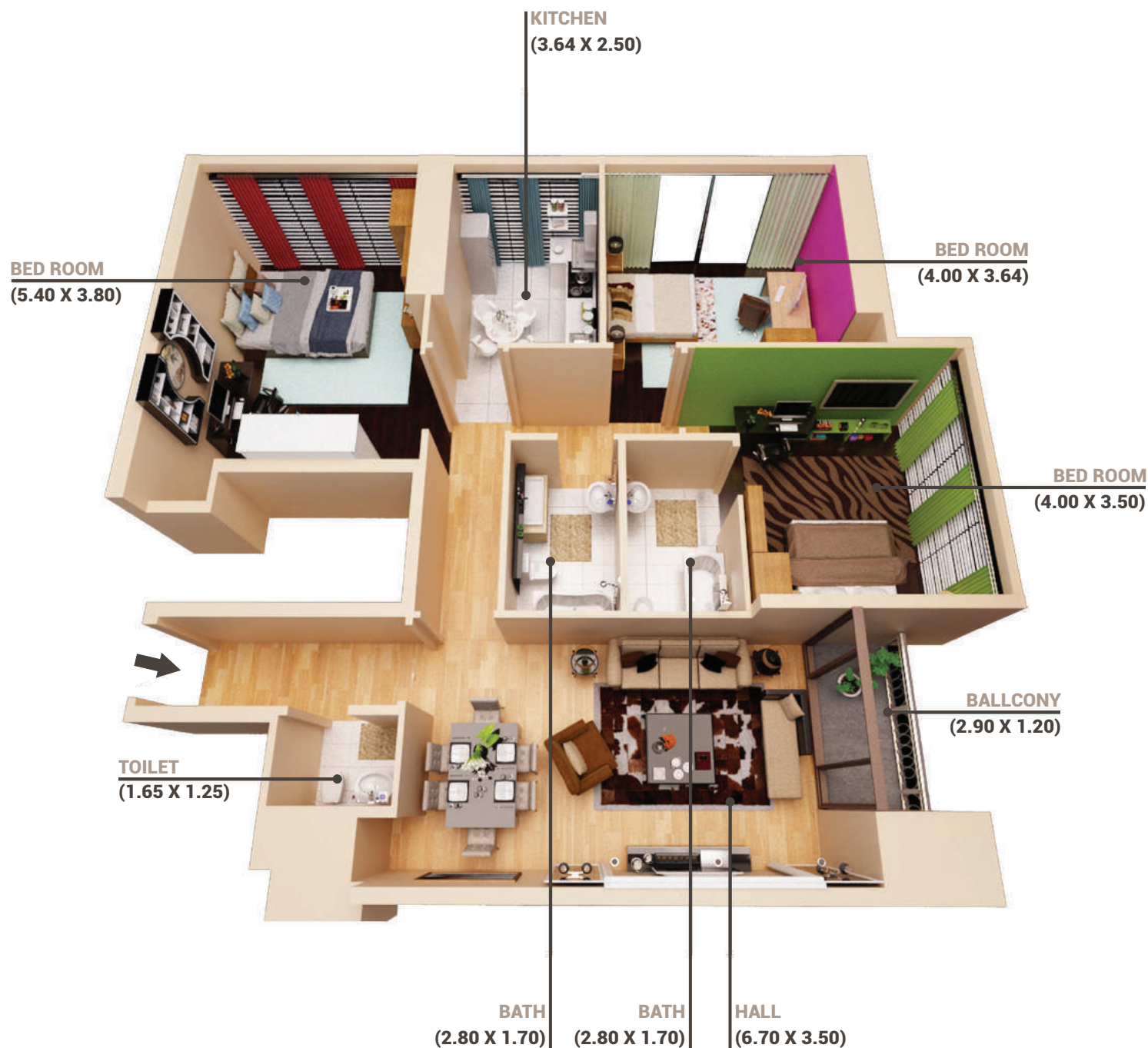
FLAT NO. 2

3 BED ROOM

Gross Area (sq m)	-	167.19
Gross Area (Sq ft)	-	1799.67

1. All dimensions are in imperial and metric, and measurement and are measured from start to finish excluding construction tolerances. 2. All materials, dimensions, and drawings are approximate only. 3. Above information is subject to change without notice and is at developer's absolute discretion. 4. Actual area may vary from the stated area. 5. All images used are for illustrative purposes only and do not represent the actual size, features, specifications, fittings, and furnishings. 6. The developer reserves the right to make revisions / alterations, at it's absolute discretion, without any liability whatsoever.





**HALL**  
(6.43 X 3.66)

## 23RD TYPICAL FLOOR

FLAT NO. 3

3 BED ROOM

Gross Area (sq m)	-	165.65
Gross Area (Sq ft)	-	1783.03



## 23RD TYPICAL FLOOR

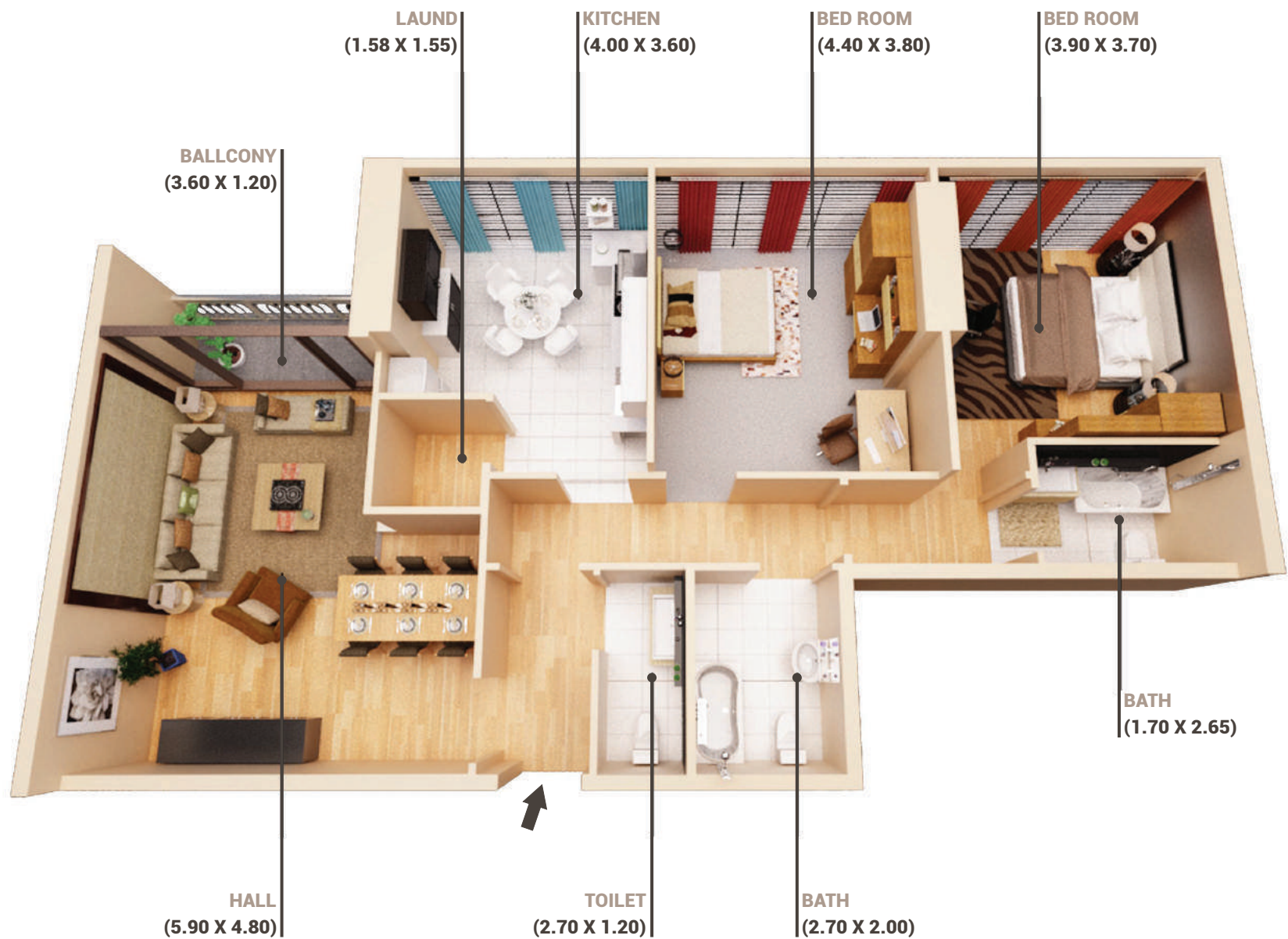
FLAT NO. 4

3 BED ROOM

Gross Area (sq m)	-	170.05
Gross Area (Sq ft)	-	1830.39

1. All dimensions are in imperial and metric, and measurement and are measured from start to finish excluding construction tolerances. 2. All materials, dimensions, and drawings are approximate only. 3. Above information is subject to change without notice and is at developer's absolute discretion. 4. Actual area may vary from the stated area. 5. All images used are for illustrative purposes only and do not represent the actual size, features, specifications, fittings, and furnishings. 6. The developer reserves the right to make revisions / alterations, at it's absolute discretion, without any liability whatsoever.





## 23RD TYPICAL FLOOR

FLAT NO. 5

2 BED ROOM

Gross Area (sq m)	-	151.05
Gross Area (Sq ft)	-	1625.92



## 23RD TYPICAL FLOOR

FLAT NO. 6

3 BED ROOM

Gross Area (sq m)	-	169.41
Gross Area (Sq ft)	-	1823.55

1. All dimensions are in imperial and metric, and measurement and are measured from start to finish excluding construction tolerances. 2. All materials, dimensions, and drawings are approximate only. 3. Above information is subject to change without notice and is at developer's absolute discretion. 4. Actual area may vary from the stated area. 5. All images used are for illustrative purposes only and do not represent the actual size, features, specifications, fittings, and furnishings. 6. The developer reserves the right to make revisions / alterations, at it's absolute discretion, without any liability whatsoever.



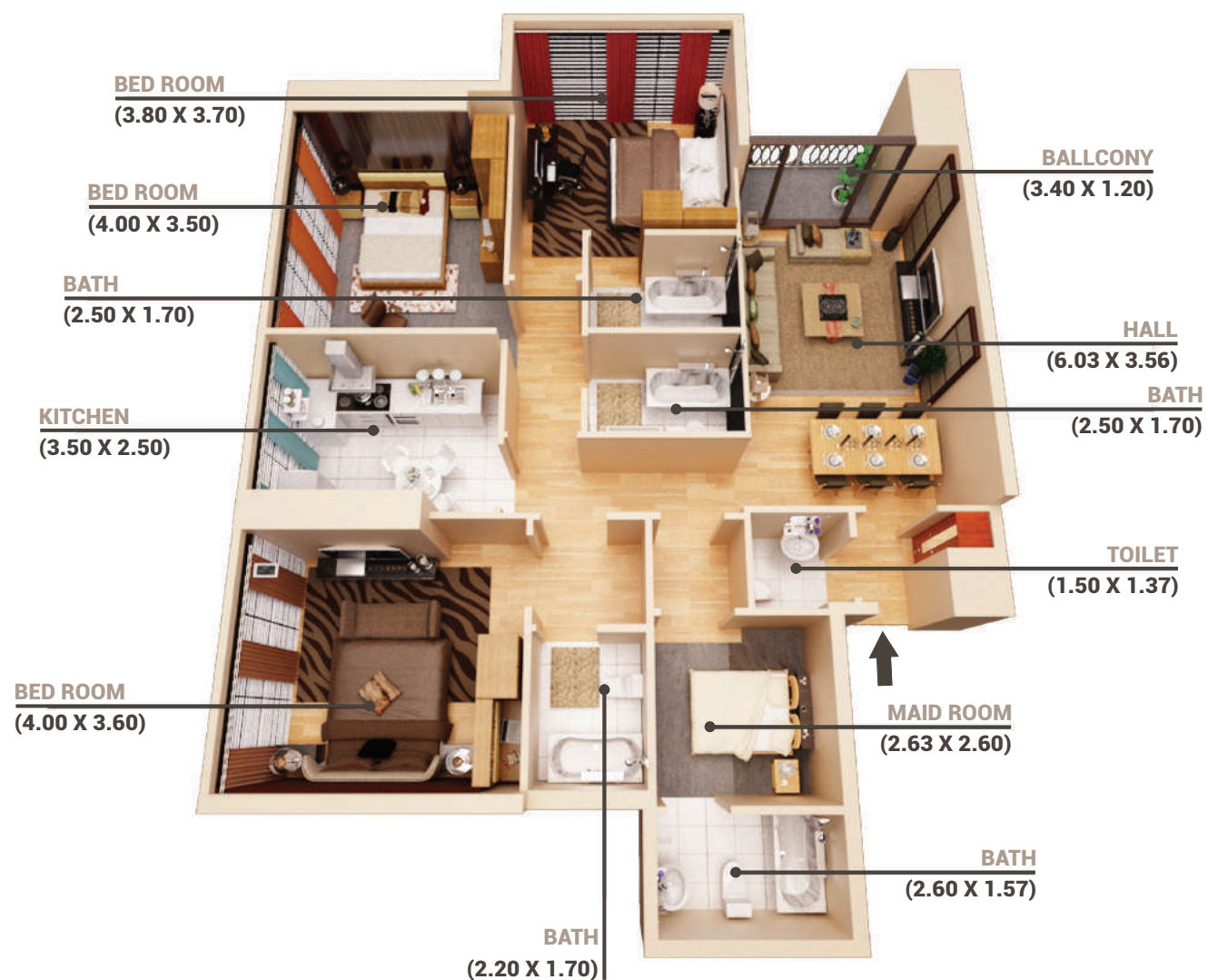


## TYPICAL FLOOR

FLAT NO. 7

3 BED ROOM

Gross Area (sq m)	-	154.44
Gross Area (Sq ft)	-	1662.42



## 23RD TYPICAL FLOOR

FLAT NO. 8

3 BED ROOM

Gross Area (sq m)	-	170.35
Gross Area (Sq ft)	-	1833.61

1. All dimensions are in imperial and metric, and measurement and are measured from start to finish excluding construction tolerances. 2. All materials, dimensions, and drawings are approximate only. 3. Above information is subject to change without notice and is at developer's absolute discretion. 4. Actual area may vary from the stated area. 5. All images used are for illustrative purposes only and do not represent the actual size, features, specifications, fittings, and furnishings. 6. The developer reserves the right to make revisions / alterations, at it's absolute discretion, without any liability whatsoever.