



Family Tower



CONTENTS

About Family Tower عن البرج 1

About Fam عن فام 2

Location الموقع 3

Design التصميم 4

Amenities المرافق 5

Floor Plans المخططات 6

Our Projects مشاريعنا 7

Contact Us اتصل بنا 8

SHARJAH NEW CENTRAL HUB

Billed as 'the most prestigious square kilometer in the UAE, Fam Holding's flagship project prides itself on its famous assets. Vibrant Sharjah New Central Hub is lined with hip cafes and high-street retail establishments, when completed, is expected to be an integral part of the city's cultural and arts scene for years to come.

أيقونة الشارقة


يمتاز "فاميلي تاور" بموقعه الفريد، فهو يتخذ من قلب الشارقة - منطقة أبو شغارة مقراً له، حيث يبعد عن إمارة دبي نحو 10 دقائق، الأمر الذي يكسب البرج حيوية خاصة. وعلى خلاف الأبراج السكنية الأخرى، يمتاز "فاميلي تاور" ببيئته الاجتماعية، فكافة الشقق السكنية تم تصميمها بطريقة هندسية تتناسب مع احتياجات العائلة على اختلافها.





فام القابضة
FAM HOLDING





شهدت سنة ٢٠٠٦ انشاء فام القابضة كمجموعة وطنية تتنوع نشاطاتها بين عدة قطاعات من خلال شركاتها و استثماراتها المتعددة

منذ تأسيسها، تتقدم فام القابضة بخطوات ثابتة نحو مزيد من التوسع و الفاعلية من خلال طرح و انجاز مشاريع فريدة لترسم بذلك نمطا جديدا في كافة مجالات الاعمال التي تنشط فيها المجموعة

FAM Holding is a conglomerate of business solutions across a number of industries having diversified investments in the region. Since our founding in early 2006, we have been moving forward aggressively on many fronts to capitalize on solid growth opportunities, to improve our operating efficiency, to expand our global presence and to sharpen our business portfolio's focus on our core businesses.

FAM Holding, with a rich heritage, strong convictions and fair business principles is ideally positioned to leverage its strengths and make optimum use of resources to become one of the most sought business houses in the region. The long-term aim is to create a broad range of innovative industries that will generate a steady flow of new ideas and technologies and advances.

Take the first step towards developing positive relationships by allowing us to share our experience and expertise in the art of doing business.

في قلب الشارقة

تعد إمارة الشارقة، منارة العلم و الثقافة ليس في الإمارات فقط، وإنما في المنطقة العربية أيضاً، فضلاً عن كونها تمثل مركزاً عالمياً للتطور و الأعمال. في حضرتها تلتقي كافة جنسيات العالم، بفضل ما توفره الإمارة من بيئة إستثمارية و إجتماعية جاذبة، فضلاً عن كونها الإمارة الوحيدة في الإمارات التي تمتاز بشواطئها، حيث تطل على ساحل الخليج العربي وخليج عمان، وتمتاز بمعالها السياحية والتراثية و متاحفها ومحمياتها الطبيعية، و الأجل أنها تمتاز بابتسامتها، فهي "الإمارة الباسمة"، التي تفضلها العائلات، لما تتمتع به من هدوء ونسيج اجتماعي قوي

In the Heart of Sharjah

A global hub on the rise, where East meets West and ambition meets opportunity, Sharjah brings the world together to live, work and play. Sharjah is a city of firsts, making the impossible a reality every day, constantly expanding the boundaries of human ingenuity to bring new environments and experiences to its citizens, residents and visitors. Sharjah's vision and innovative spirit serve as a beacon for the region and an inspiration to the world.

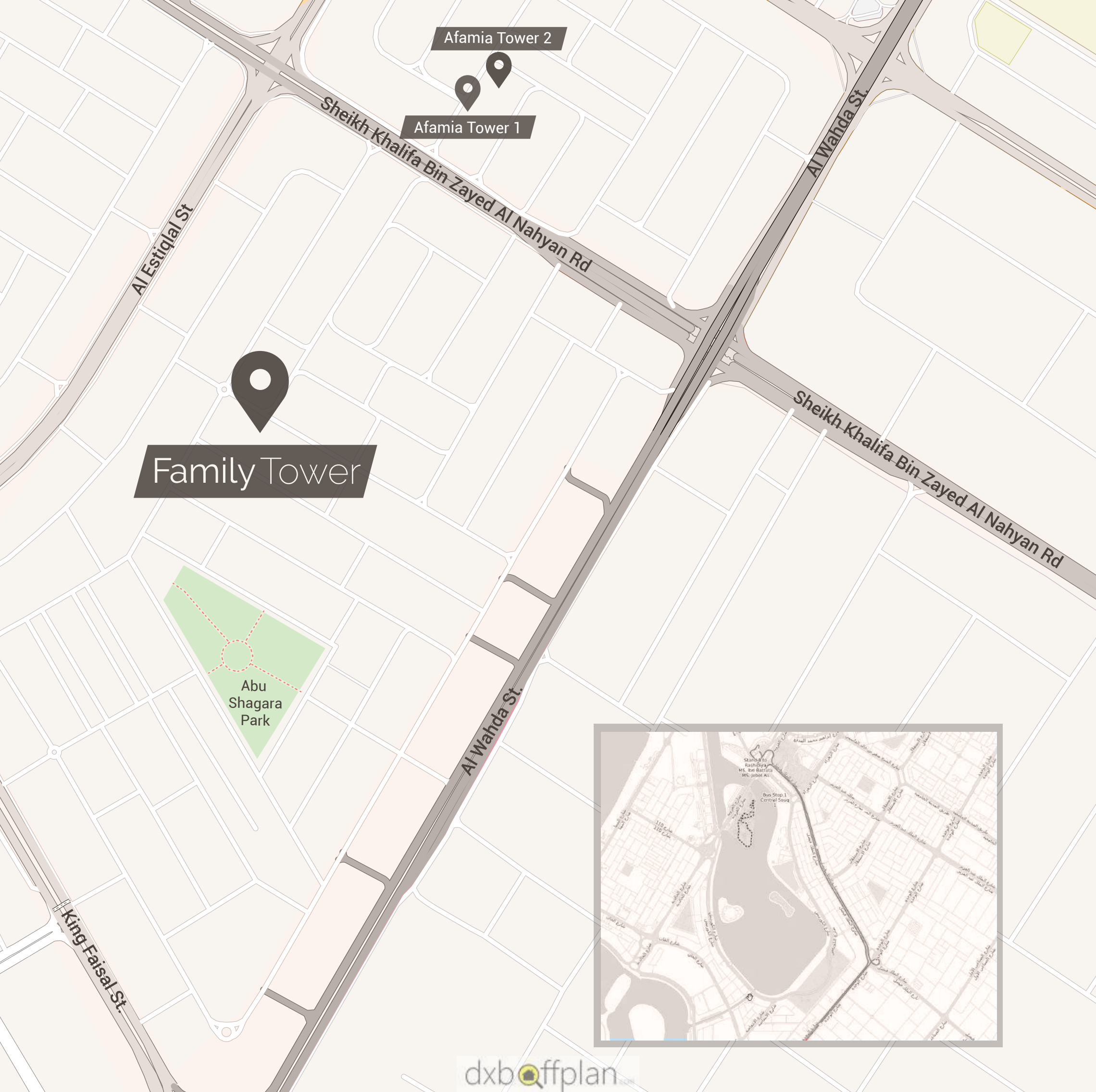
Khalid Lake

Al Nakheel
Oasis

Al Nud

King Faisal St.

Al Majaz



FAMILY TIME



Designed to deliver the pinnacle of Sharjah living, all Family Tower features outstanding finishing, and large windows and balconies that melt away the barriers between indoor living environments and the spectacular vistas that lie beyond. The perfect home for any lifestyle awaits, with a wide range of apartments sizes and layouts to suit every need. Come home to Family Tower, a vibrant vision of urban living.

العائلة في قلب اهتماماتنا

تم تصميم البرج بطريقة فريدة، قادرة على إذابة الحواجز بين العائلات، وضمان حصولها على الراحة التامة، والخصوصية الكاملة، كما تمتاز شقق البرج باتساعها وتشطيباتها الرائعة، وامتلاكها لنوافذ كبيرة وشرفات واسعة وممتدة تعمل على كسر الجمود في الأماكن المغلقة، وتضمن الحصول على إطلالات جذابة. لكافة الشقق في البرج صممت برؤية نابضة بالحياة.

CINEMA INTERGRATED



High tack cinema Hall at your disposal
to watch the latest Hollywood and
Bollywood movies at your leisure time.

قاعة سينما نهر حواسك

تخصيص قاعة للسينما في الأبراج السكنية، تعد فكرة نادرة، ولكنها في "فاميلي تاور" أصبحت حقيقة واقعية، حيث تم تصميم قاعة مخصصة لعروض الأفلام العالمية، وتم تزويدها بأحدث تقنيات العرض والصوت، التي تضمن حصول المشاهد على تجربة فريدة من نوعها.

GAMES & AMUSEMENT



Fun time for all kids and family at Family Tower Indore Amusement park to be enjoyed thought all seasons.



العاب و تسالي

لا حدود للمتعة، في "فاميلي تاور"، فسكانه لن يضطروا إلى مغادرة شقق أحلامهم بحثاً عن المتعة التي توفرها إدارة البرج، من خلال مناطق مخصصة للعب الأطفال، وزوايا مخصصة للشواء، بالإضافة إلى مسبح واسع، صمم وفق معايير أولمبية، ويمتاز بإطلالاته الخلابة على المدينة، وإلى جانب ذلك تتوفر في البرج أيضاً مجموعة كبيرة من المحال التجارية ومنافذ البيع بالتجزئة والمطاعم والمقاهي، التي من شأنها أن تُغني تجربة سكان البرج.

SWIMMING POOL



In addition to having the finest retail and dining outlets at their doorstep, residents of Family Tower will have access to a glistening infinity pool with stunning views of the ever-evolving metropolis. They will also have access to cabanas, barbecue areas, children's play areas

المسابح

بالإضافة إلى وجود أرقى منافذ بيع التجزئة والمطاعم على أعتاب منازلهم ، سيتمكن سكان "فاميلي تاور" من الوصول إلى مسبح لامتناهي مع إطلالات خلابة على المدينة المتطورة باستمرار. كما يمكنهم الوصول إلى الكبائن ومناطق الشواء ومناطق لعب الأطفال

COFFEE SHOP



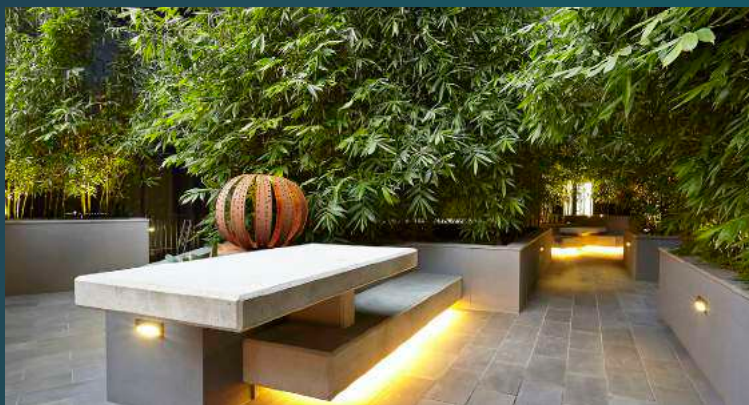
**ALL YOU NEED IS LOVE AND A CUP
OF COFFEE!**

Family Tower also provides a Coffee Shop where you can spend quality time with your friends and family anytime during the day.

المقهى

الهدوء والحب، هما أكثر ما تبحث عنه العائلات، وهو ما يتوفر في "فاميلي تاور"، الذي يضم ركناً خاصاً بالقهوة، حيث يمنح سكان البرج، بعضاً من لحظات الهدوء والكثير من الحب بصحبة فنجان القهوة، خاصة في أوقات الصباح، حيث يمكن الاستمتاع بما تشهده المدينة من نشاط لافت. مقهى القهوة، هو المكان الأمثل للقاء الأصدقاء وأفراد العائلة. وسط أجواء هادئة، مفعمة بالدفء.

COURTYARD



Beautiful gardens surrounded by water features throughout Family Tower offers an exclusive healthy lifestyle to make every day an exceptional experience. To accentuate this lifestyle, we have designed BBQ areas & fire pits along the walkway to be enjoyed by Family Tower residents



الحديقة

يمتاز "فاميلي تاور" بأجوائه الصحية الدافئة، التي توفر لسكان البرج اسلوب حياة فريد من نوعه، حيث سيكون بإمكانهم قضاء أوقات جميلة في حديقة الفناء، التي تمتاز بلونها الأخضر وألوان الزهور التي تحيط المكان، تتوفر في البرج أيضاً أماكن خاصة بالشواء، التي تمنح سكان البرج خصوصية كاملة، حيث يمكنهم قضاء أيام استثنائية تعيش في ذاكرتهم لفترات طويلة

PARTY HALL



Family Tower also provides a Banquet Hall with utmost care and detail for your special event. Whether you are planning a wedding, Birthday or a seminar the tenants can host their private events by utilizing this Banquet Hall.



قاعة حفلات

تفاصيل كثيرة يتضمنها "فاميلي تاور" والتي تضمن حصول سكانه على الراحة التامة، وتعد قاعة الحفلات واحدة من أبرز الأركان التي تم مراعاتها خلال تصميم البرج، حيث يمكن للسكان الاستفادة من القاعة في إقامة الولائم الكبيرة، وحفلات الزفاف أو أعياد الميلاد، وكذلك تنظيم الندوات والمؤتمرات. القاعة تم تجهيزها بأحدث التقنيات التي تتناسب مع تطلعات السكان

GYM

GENTS & LADIES



We also provide with latest GM facilities for all our tenants so that they can utilize these amenities to keep themselves fit.



صالة اللياقة البدنية

قاعات منفصلة للرجال و النساء

لضمان نمط حياة عصري لسكان "فاملي تاور" تم تجهيز قاعات للياقة البدنية بشكل منفصل للرجال و النساء. تم تزويد هذه القاعات بمعدات وفق معايير عالية تضمن تلبية احتياجات ساكني البرج

HYPERMARKET



Another most important feature of Family Tower is that we have a hypermarket just below the building where all the tenants can shop for their daily requirement with much ease and comfort.



محلات تجزئة

يتميز "فاملي تاور" بمحلات التجزئة المخصصة لخدمة ساكني البرج على مدار الساعة. تتميز هذه المحلات بأنها تغطي احتياجات ساكني البرج من الحاجات اليومية و تضمن التوصيل السريع خلال فترة قصيرة







تصميم فريد

يتضمن "فاميلي تاور" نحو 272 شقة سكنية، تختلف في أحجامها وكذلك في تصاميمها الفريدة، التي تراعي كافة احتياجات أفراد العائلة. وتتميز كافة الشقق بتصميمها النوعية، وتشطيباتها الرائعة، التي روعي فيها وجود النوافذ الكبيرة التي تمنح البيت ما يحتاج إليه من إضاءة الشمس، واطلالة جذابة، كما تم تزويدها بشرفات كبيرة، قادرة على منح البيت حياة أخرى.

WHERE YOU STAY, SAYS IT ALL

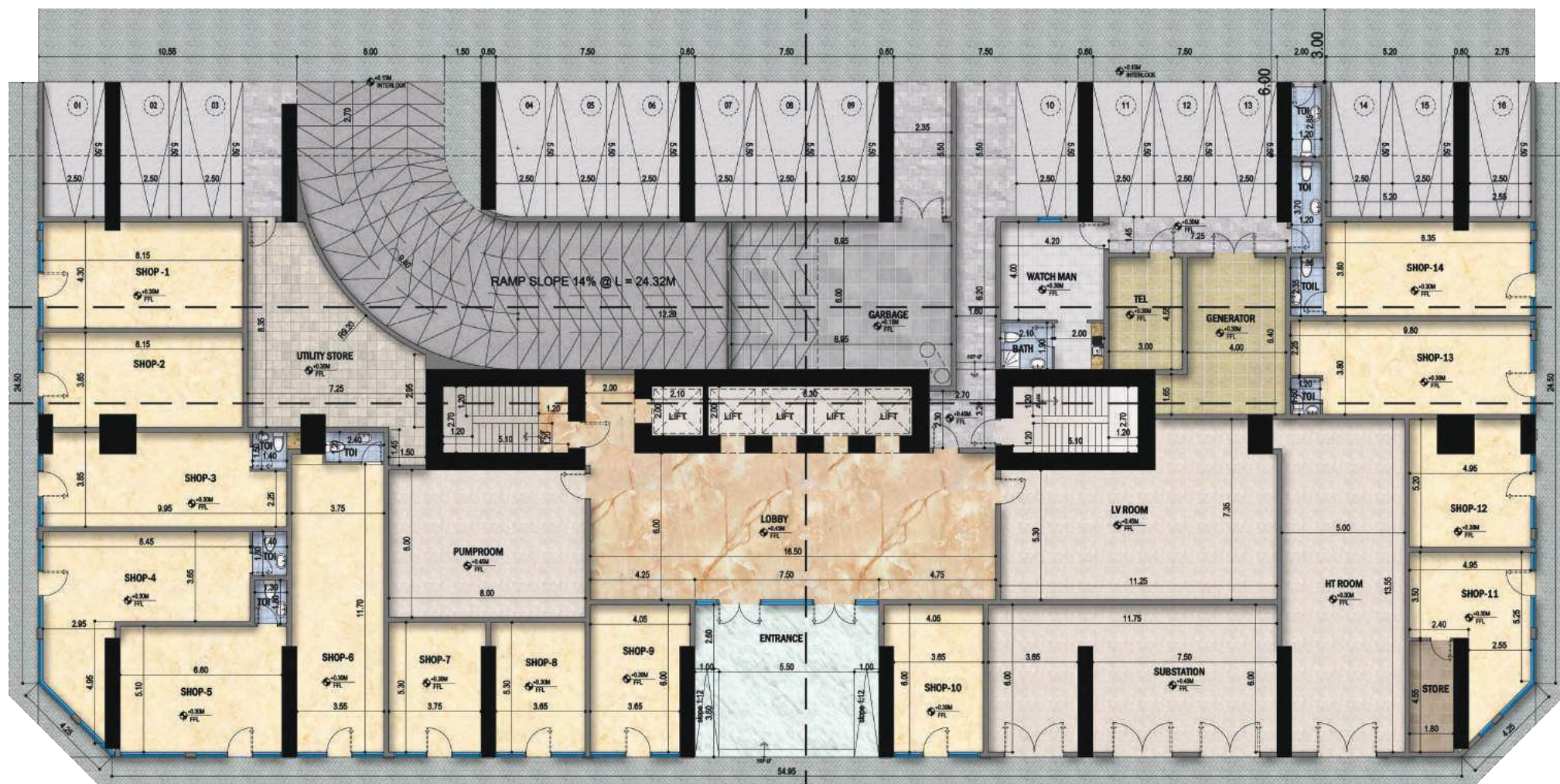
Spaces for exquisite living

Where You Stay, Says It All, Family tower is elegantly outfitted to both reflect and complement the cosmopolitan lifestyles of its inhabitants. Stone countertops, pendant lights and glass paneling enhance each living space with a tasteful, modern aesthetic. Spaces for exquisite living



BE PART OF THE
FAMILY

GROUND FLOOR



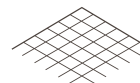
NO. OF SHOPS

14



CAR PARKING

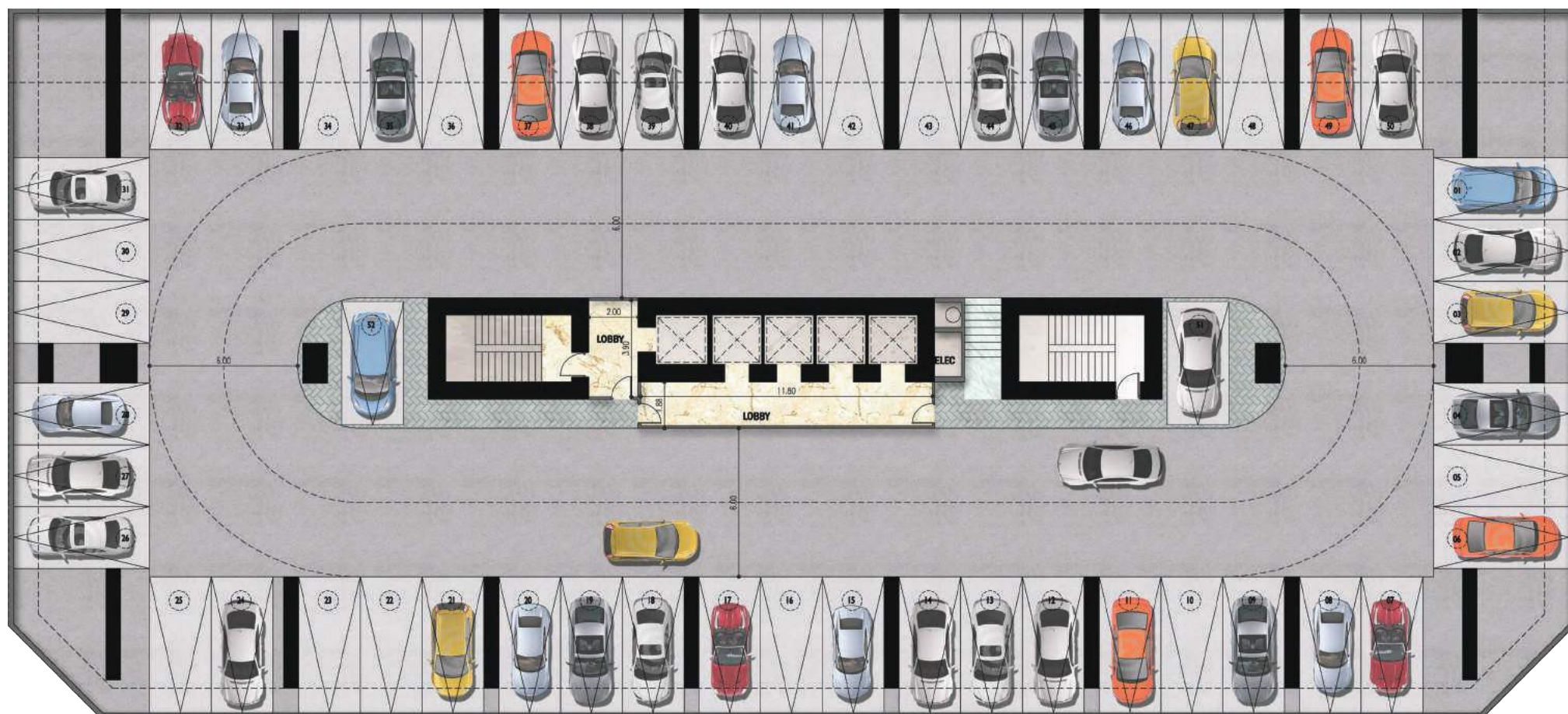
16



GROUND FLOOR AREA

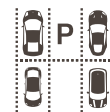
1803.45
SQM

PARKING FLOOR



NO. OF CAR PARKING

12

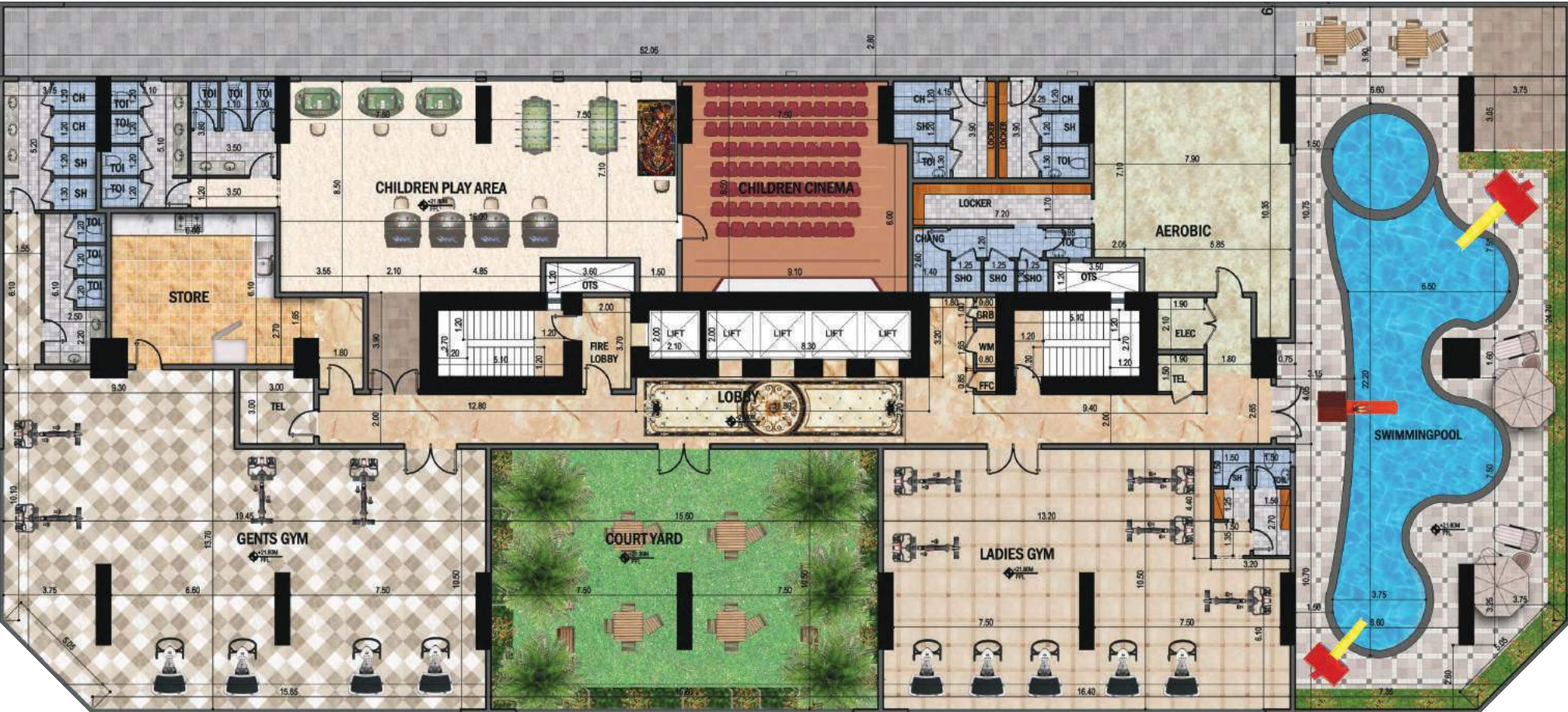


5 CAR PARKING FLOOR
BUILT UP AREA

9017.25
SQM

1. All dimensions are in imperial and metric, and measurement and are measured from start to finish excluding construction tolerances. 2. All materials, dimensions, and drawings are approximate only. 3. Above information is subject to change without notice and is at developer's absolute discretion. 4. Actual area may vary from the stated area. 5. All images used are for illustrative purposes only and do not represent the actual size, features, specifications, fittings, and furnishings. 6. The developer reserves the right to make revisions / alterations, at it's absolute discretion, without any liability whatsoever.

HEALTH CLUB FLOOR PLAN



HEALTH CLUB FLOOR AREA

1803.45
SQM



1. All dimensions are in imperial and metric, and measurement and are measured from start to finish excluding construction tolerances. 2. All materials, dimensions, and drawings are approximate only. 3. Above information is subject to change without notice and is at developer's absolute discretion. 4. Actual area may vary from the stated area. 5. All images used are for illustrative purposes only and do not represent the actual size, features, specifications, fittings, and furnishings. 6. The developer reserves the right to make revisions / alterations, at it's absolute discretion, without any liability whatsoever.

TYPICAL FLOOR

FLAT NO. 12 1 BED ROOM	Gross Area (sq m)	-	80.18
	Gross Area (Sq ft)	-	863.03

FLAT NO. 11 2 BED ROOM	Gross Area (sq m)	-	122.47
	Gross Area (Sq ft)	-	1318.31

FLAT NO. 10 2 BED ROOM	Gross Area (sq m)	-	123.59
	Gross Area (Sq ft)	-	1330.32

FLAT NO. 9 1 BED ROOM	Gross Area (sq m)	-	79.94
	Gross Area (Sq ft)	-	860.46

FLAT NO. 8 2 BED ROOM	Gross Area (sq m)	-	121.75
	Gross Area (Sq ft)	-	1310.48

FLAT NO. 7 1 BED ROOM	Gross Area (sq m)	-	78.05
	Gross Area (Sq ft)	-	840.08

FLAT NO. 6 1 BED ROOM	Gross Area (sq m)	-	82.82
	Gross Area (Sq ft)	-	891.52

FLAT NO. 5 2 BED ROOM	Gross Area (sq m)	-	122.44
	Gross Area (Sq ft)	-	1317.90

FLAT NO. 4 1 BED ROOM	Gross Area (sq m)	-	79.83
	Gross Area (Sq ft)	-	859.25

FLAT NO. 3 2 BED ROOM	Gross Area (sq m)	-	130.71
	Gross Area (Sq ft)	-	1407.01

FLAT NO. 2 3 BED ROOM	Gross Area (sq m)	-	168.82
	Gross Area (Sq ft)	-	1817.20

FLAT NO. 1 2 BED ROOM	Gross Area (sq m)	-	116.95
	Gross Area (Sq ft)	-	1258.90

23RD TYPICAL FLOOR

FLAT NO. 1 2 BED ROOM	Gross Area (sq m)	-	159.74
	Gross Area (Sq ft)	-	1719.44

FLAT NO. 2 3 BED ROOM	Gross Area (sq m)	-	167.19
	Gross Area (Sq ft)	-	1799.67

FLAT NO. 3 3 BED ROOM	Gross Area (sq m)	-	165.65
	Gross Area (Sq ft)	-	1783.03

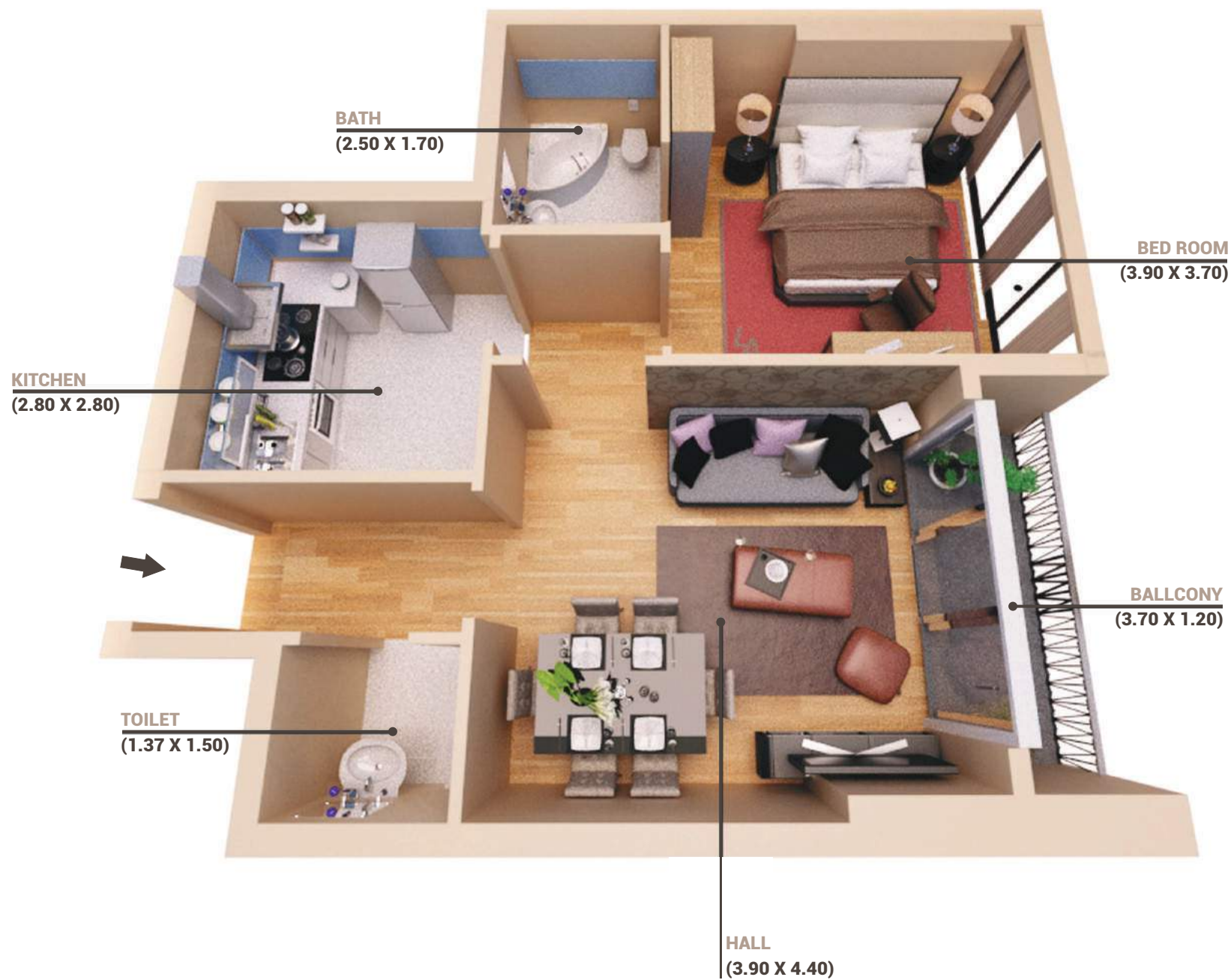
FLAT NO. 4 3 BED ROOM	Gross Area (sq m)	-	170.05
	Gross Area (Sq ft)	-	1830.39

FLAT NO. 5 2 BED ROOM	Gross Area (sq m)	-	151.05
	Gross Area (Sq ft)	-	1625.92

FLAT NO. 6 3 BED ROOM	Gross Area (sq m)	-	169.41
	Gross Area (Sq ft)	-	1823.55

FLAT NO. 7 3 BED ROOM	Gross Area (sq m)	-	154.44
	Gross Area (Sq ft)	-	1662.42

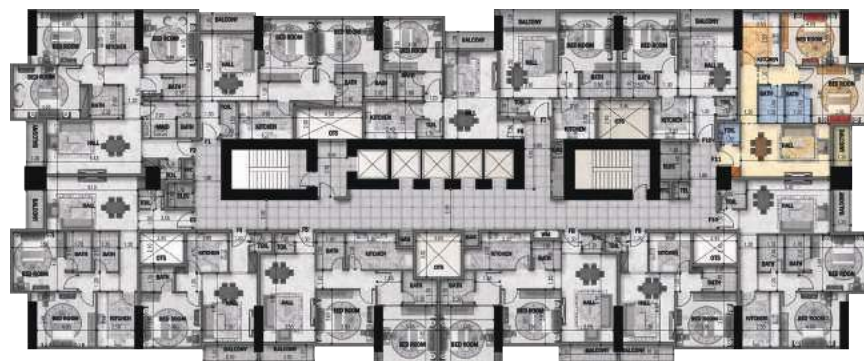
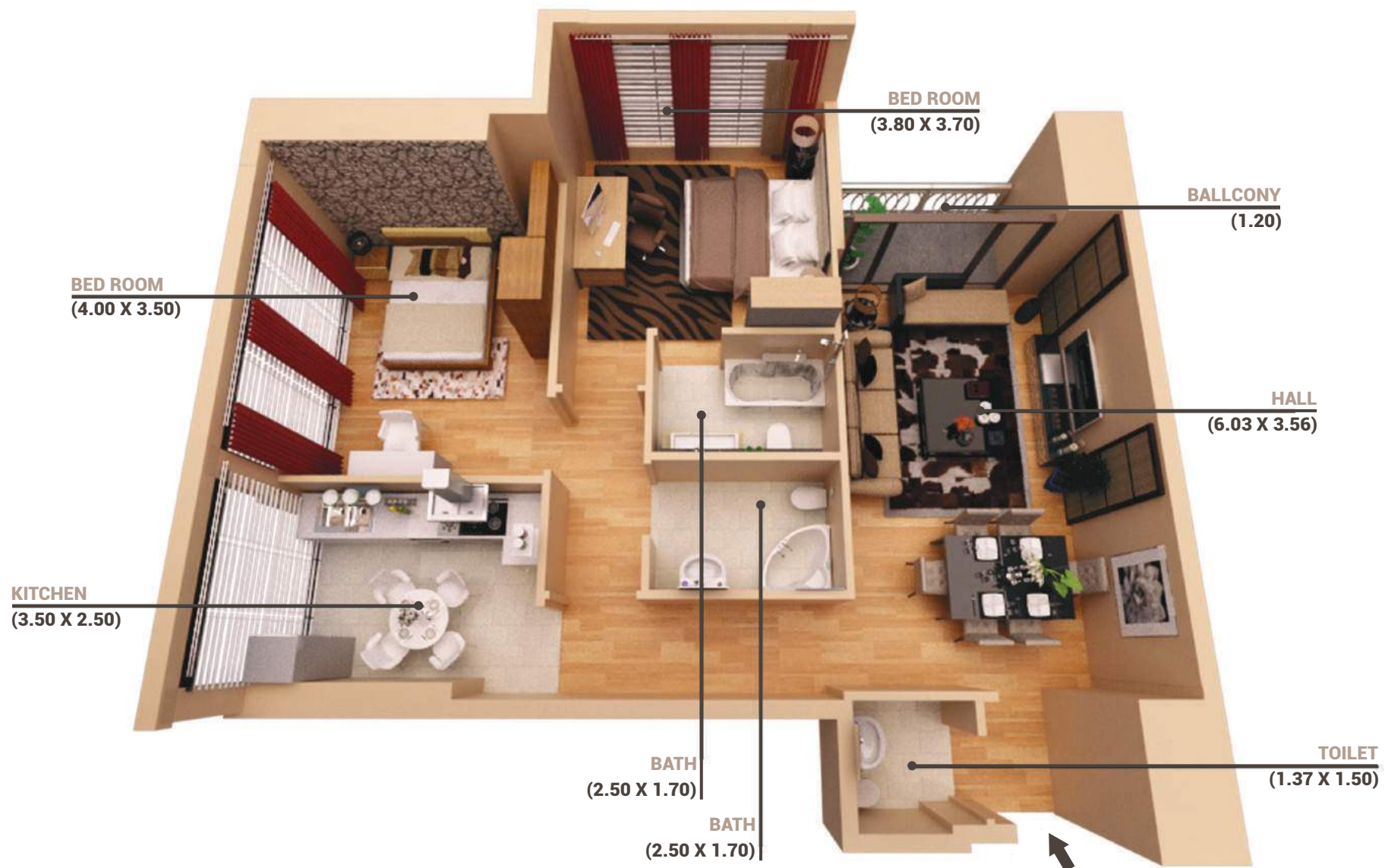
FLAT NO. 8 3 BED ROOM	Gross Area (sq m)	-	170.35
	Gross Area (Sq ft)	-	1833.61



TYPICAL FLOOR

FLAT NO. 12	
1 BED ROOM	

Gross Area (sq m)	-	80.18
Gross Area (Sq ft)	-	863.03



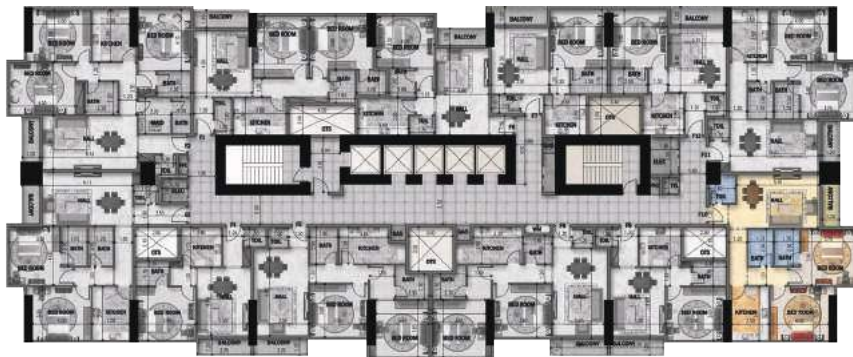
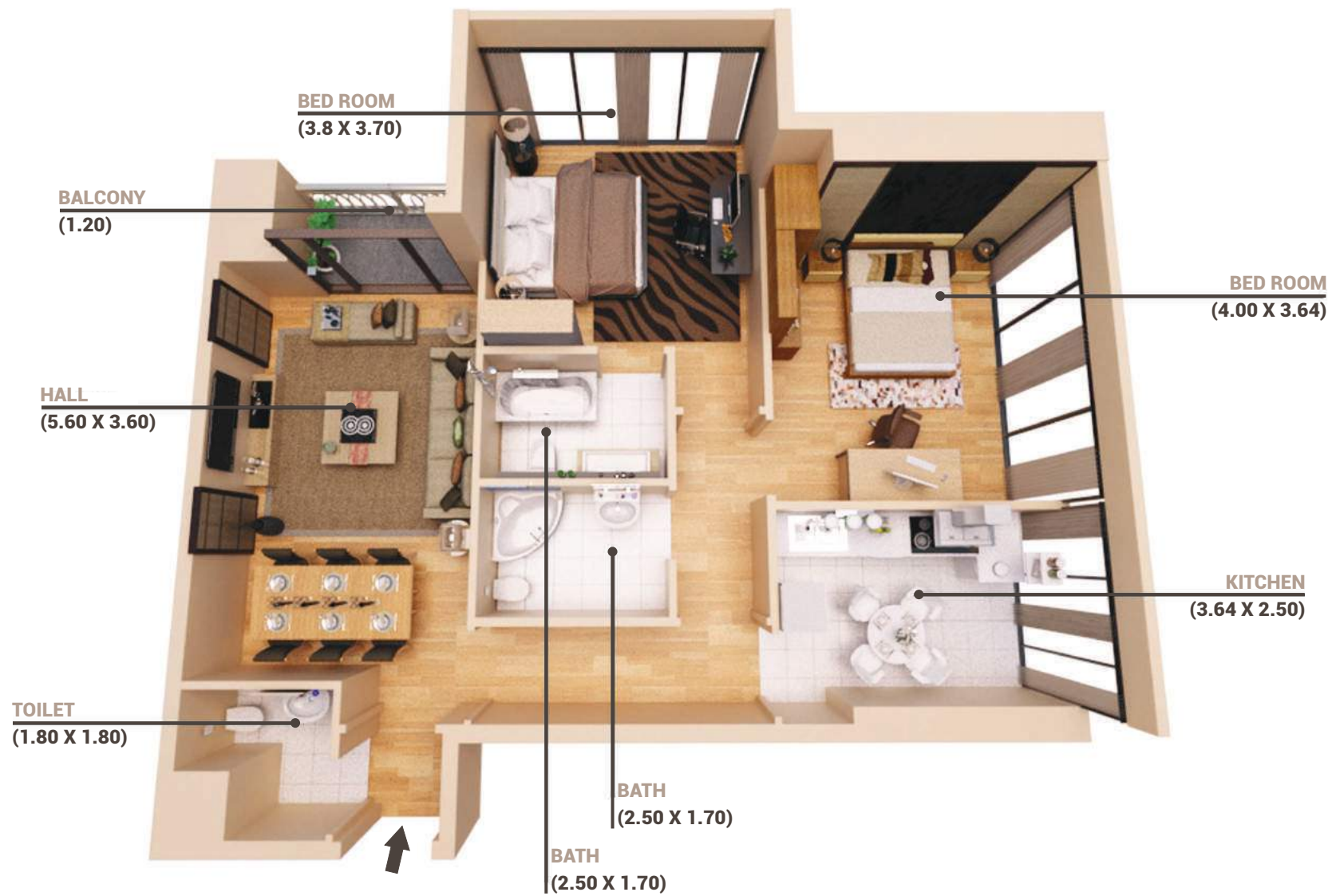
TYPICAL FLOOR

FLAT NO. 11

2 BED ROOM

Gross Area (sq m)	-	122.47
Gross Area (Sq ft)	-	1318.31

1. All dimensions are in imperial and metric, and measurement and are measured from start to finish excluding construction tolerances. 2. All materials, dimensions, and drawings are approximate only. 3. Above information is subject to change without notice and is at developer's absolute discretion. 4. Actual area may vary from the stated area. 5. All images used are for illustrative purposes only and do not represent the actual size, features, specifications, fittings, and furnishings. 6. The developer reserves the right to make revisions / alterations, at it's absolute discretion, without any liability whatsoever.

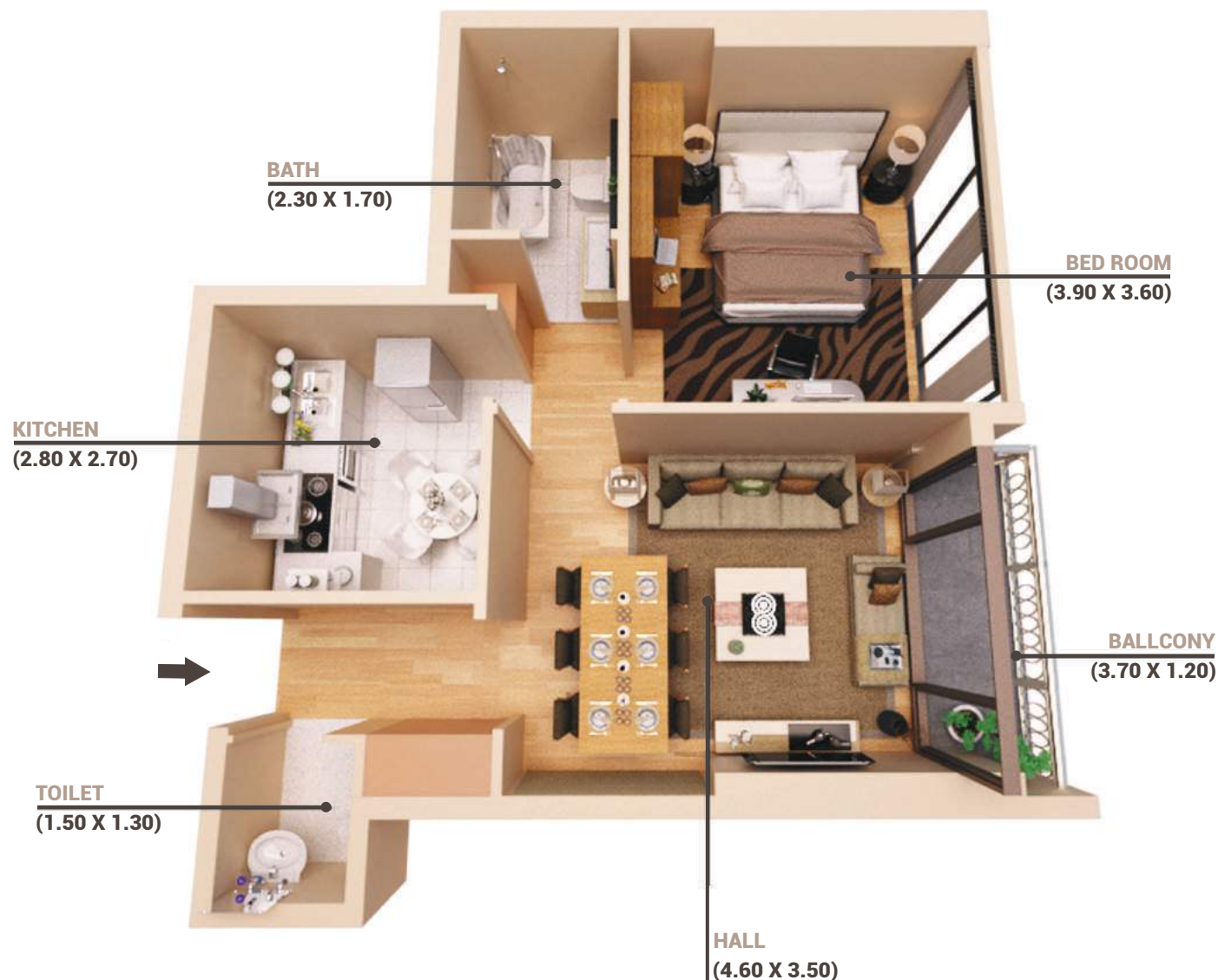


TYPICAL FLOOR

FLAT NO. 10

2 BED ROOM

Gross Area (sq m)	-	123.59
Gross Area (Sq ft)	-	1330.32



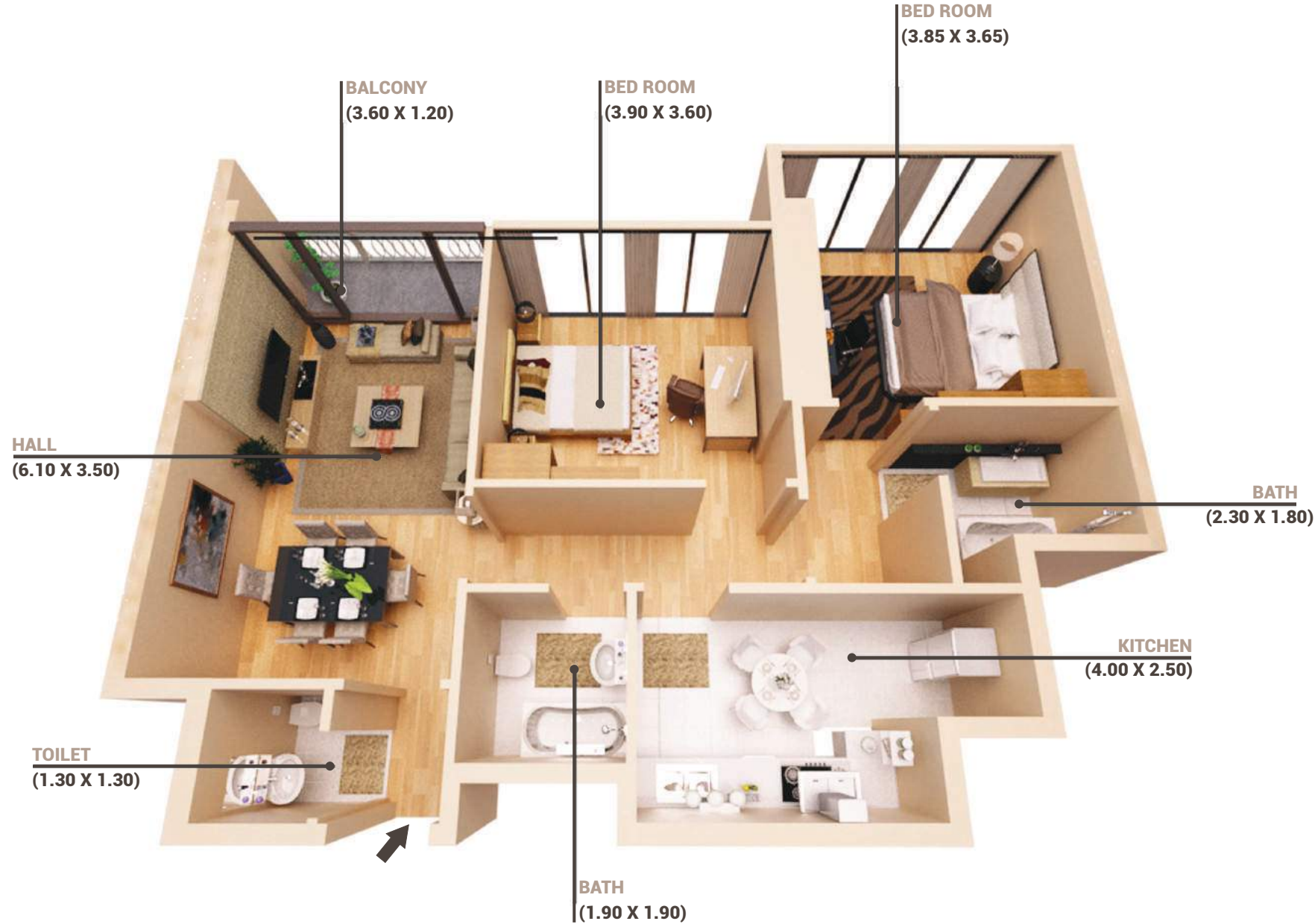
TYPICAL FLOOR

FLAT NO. 9

1 BED ROOM

Gross Area (sq m)	-	79.94
Gross Area (Sq ft)	-	860.46

1. All dimensions are in imperial and metric, and measurement and are measured from start to finish excluding construction tolerances. 2. All materials, dimensions, and drawings are approximate only. 3. Above information is subject to change without notice and is at developer's absolute discretion. 4. Actual area may vary from the stated area. 5. All images used are for illustrative purposes only and do not represent the actual size, features, specifications, fittings, and furnishings. 6. The developer reserves the right to make revisions / alterations, at it's absolute discretion, without any liability whatsoever.

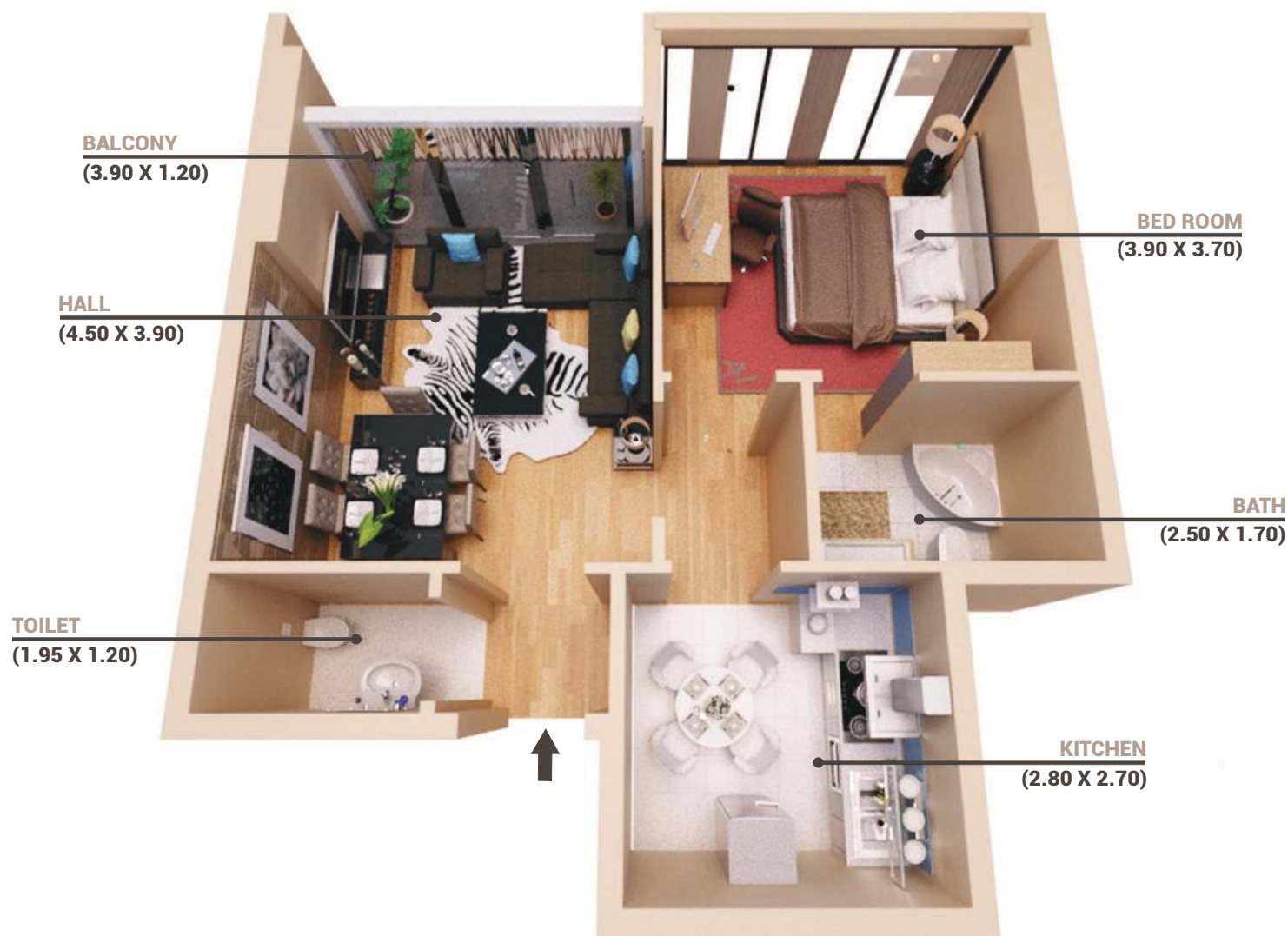


TYPICAL FLOOR

FLAT NO. 8

2 BED ROOM

Gross Area (sq m)	-	121.75
Gross Area (Sq ft)	-	1310.48



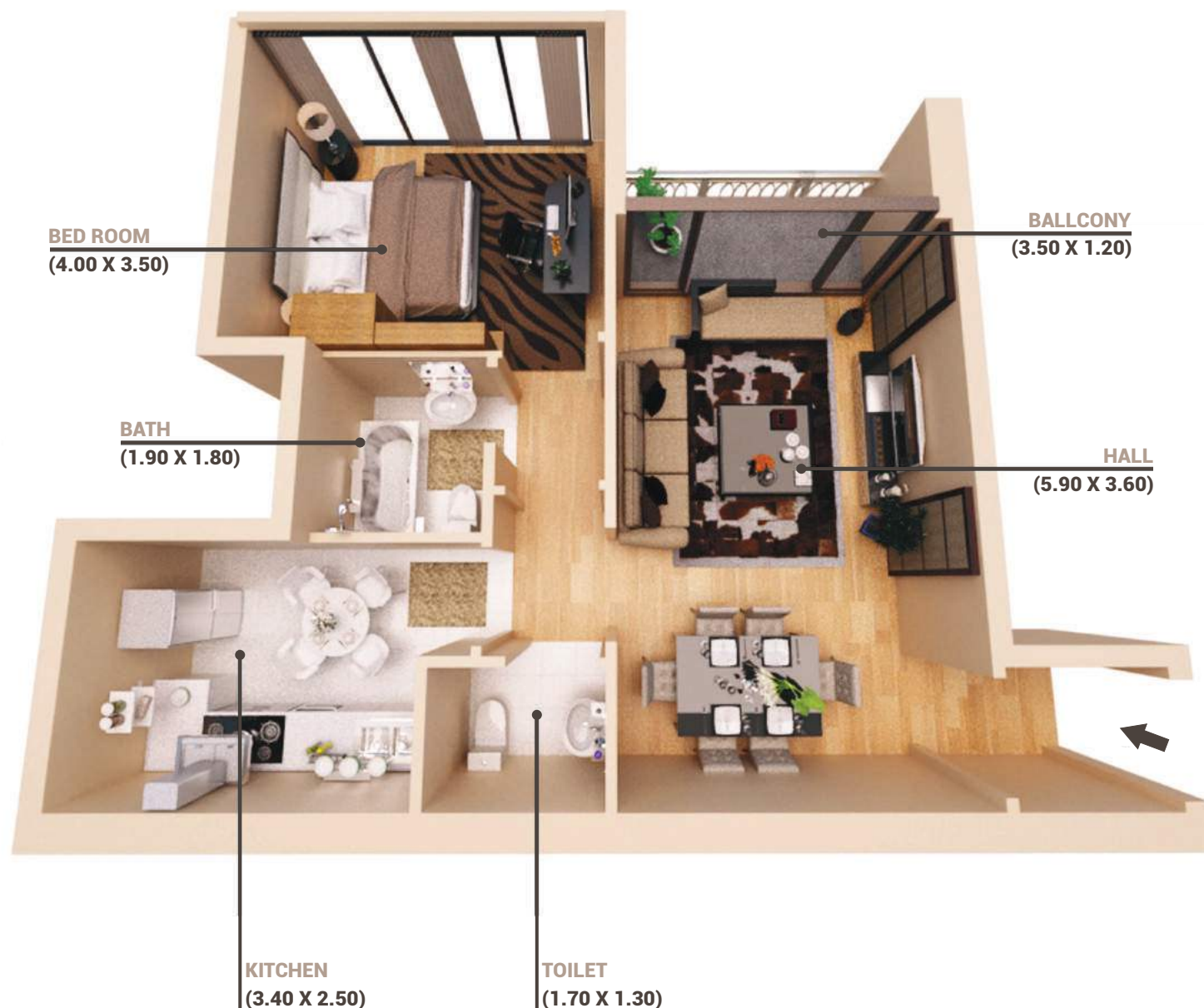
TYPICAL FLOOR

FLAT NO 7

1 BED ROOM

Gross Area (sq m)	-	78.05
Gross Area (Sq ft)	-	840.08

1. All dimensions are in imperial and metric, and measurement and are measured from start to finish excluding construction tolerances. 2. All materials, dimensions, and drawings are approximate only. 3. Above information is subject to change without notice and is at developer's absolute discretion. 4. Actual area may vary from the stated area. 5. All images used are for illustrative purposes only and do not represent the actual size, features, specifications, fittings, and furnishings. 6. The developer reserves the right to make revisions / alterations, at it's absolute discretion, without any liability whatsoever.

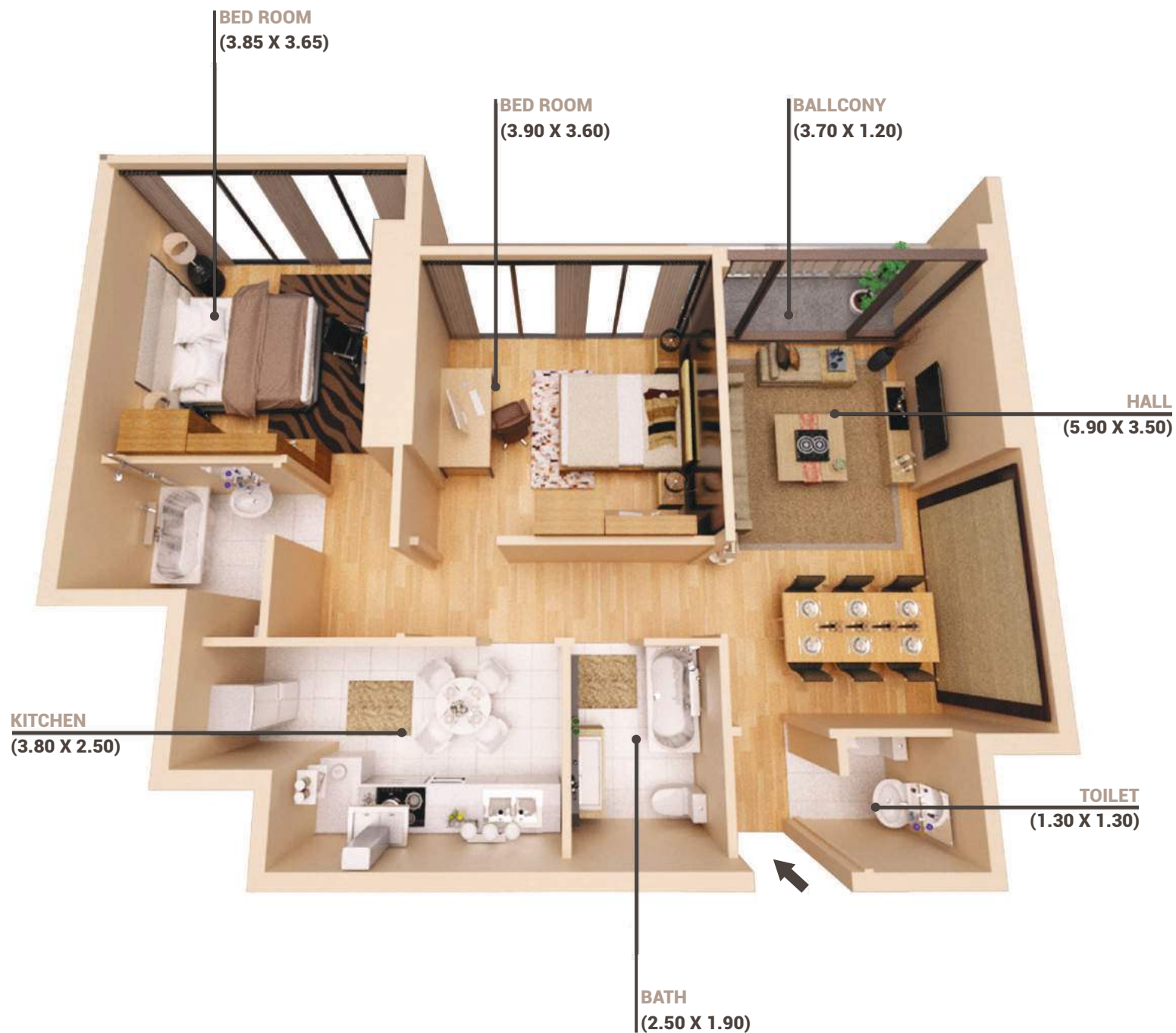


TYPICAL FLOOR

FLAT NO. 6

1 BED ROOM

Gross Area (sq m)	-	82.82
Gross Area (Sq ft)	-	891.52



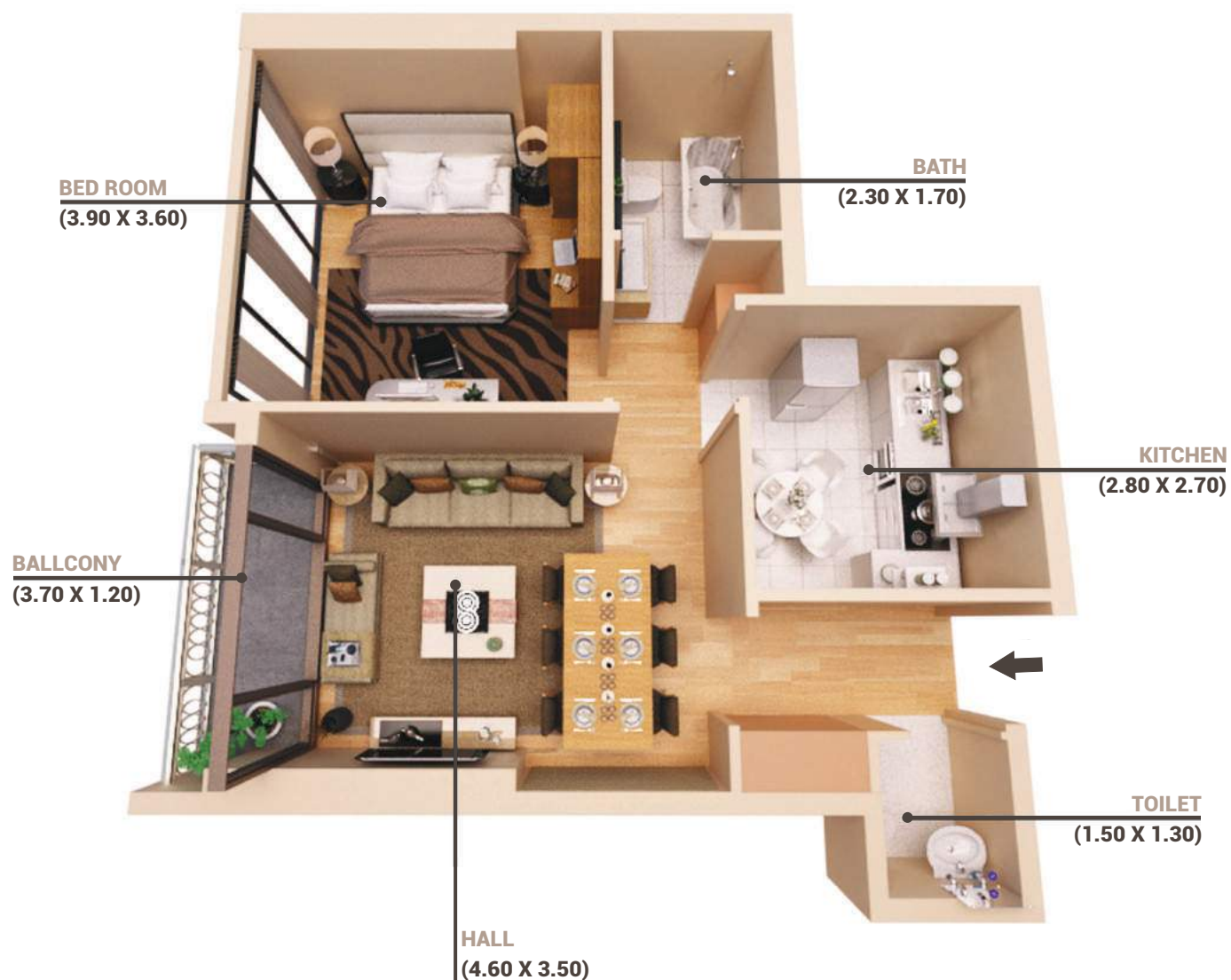
TYPICAL FLOOR

FLAT NO. 5

2 BED ROOM

Gross Area (sq m)	-	122.44
Gross Area (Sq ft)	-	1317.90

1. All dimensions are in imperial and metric, and measurement and are measured from start to finish excluding construction tolerances. 2. All materials, dimensions, and drawings are approximate only. 3. Above information is subject to change without notice and is at developer's absolute discretion. 4. Actual area may vary from the stated area. 5. All images used are for illustrative purposes only and do not represent the actual size, features, specifications, fittings, and furnishings. 6. The developer reserves the right to make revisions / alterations, at it's absolute discretion, without any liability whatsoever.

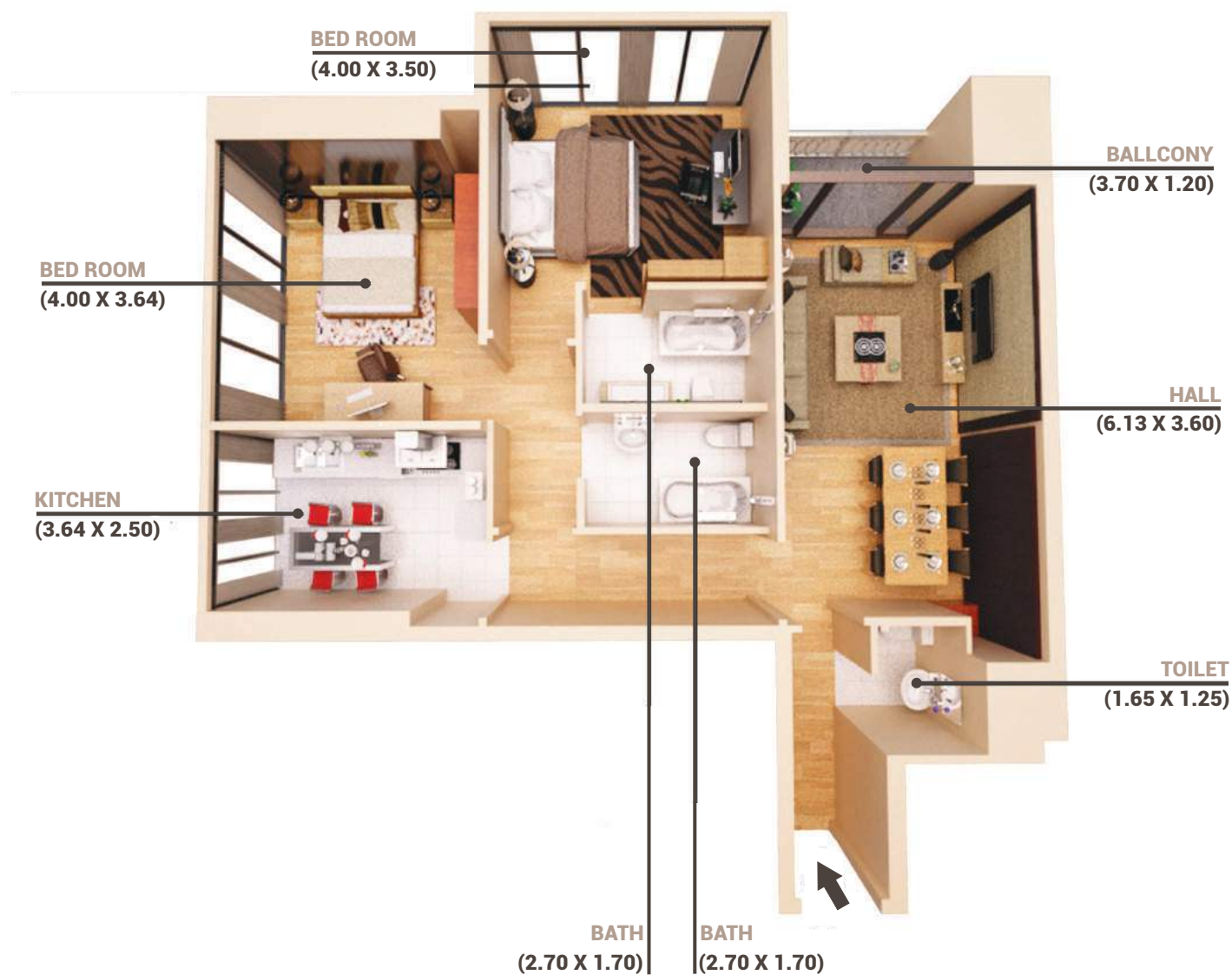


TYPICAL FLOOR

FLAT NO. 4

1 BED ROOM

Gross Area (sq m)	-	79.83
Gross Area (Sq ft)	-	859.25



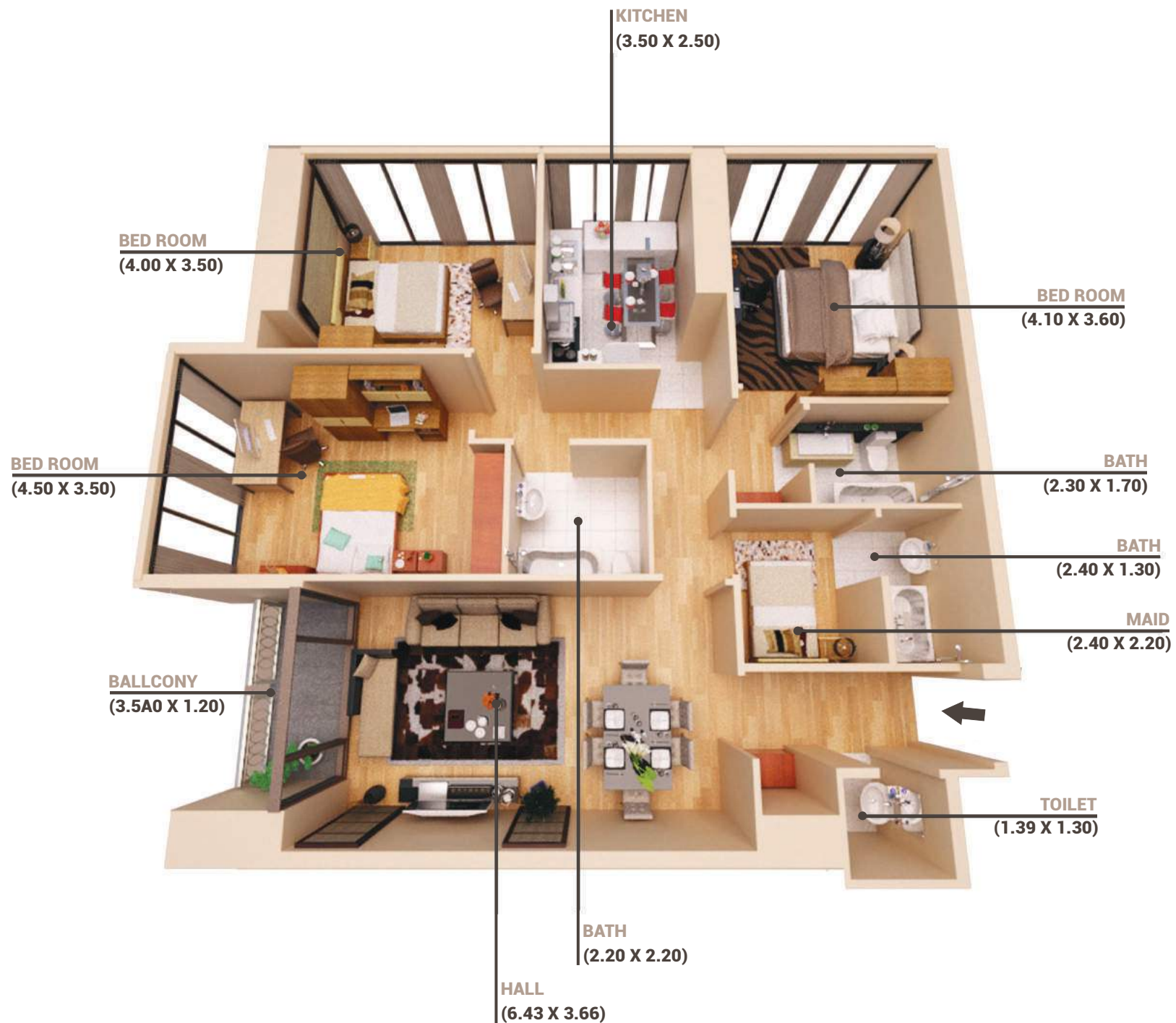
TYPICAL FLOOR

FLAT NO. 3

2 BED ROOM

Gross Area (sq m)	-	130.71
Gross Area (Sq ft)	-	1407.01

1. All dimensions are in imperial and metric, and measurement and are measured from start to finish excluding construction tolerances. 2. All materials, dimensions, and drawings are approximate only. 3. Above information is subject to change without notice and is at developer's absolute discretion. 4. Actual area may vary from the stated area. 5. All images used are for illustrative purposes only and do not represent the actual size, features, specifications, fittings, and furnishings. 6. The developer reserves the right to make revisions / alterations, at it's absolute discretion, without any liability whatsoever.

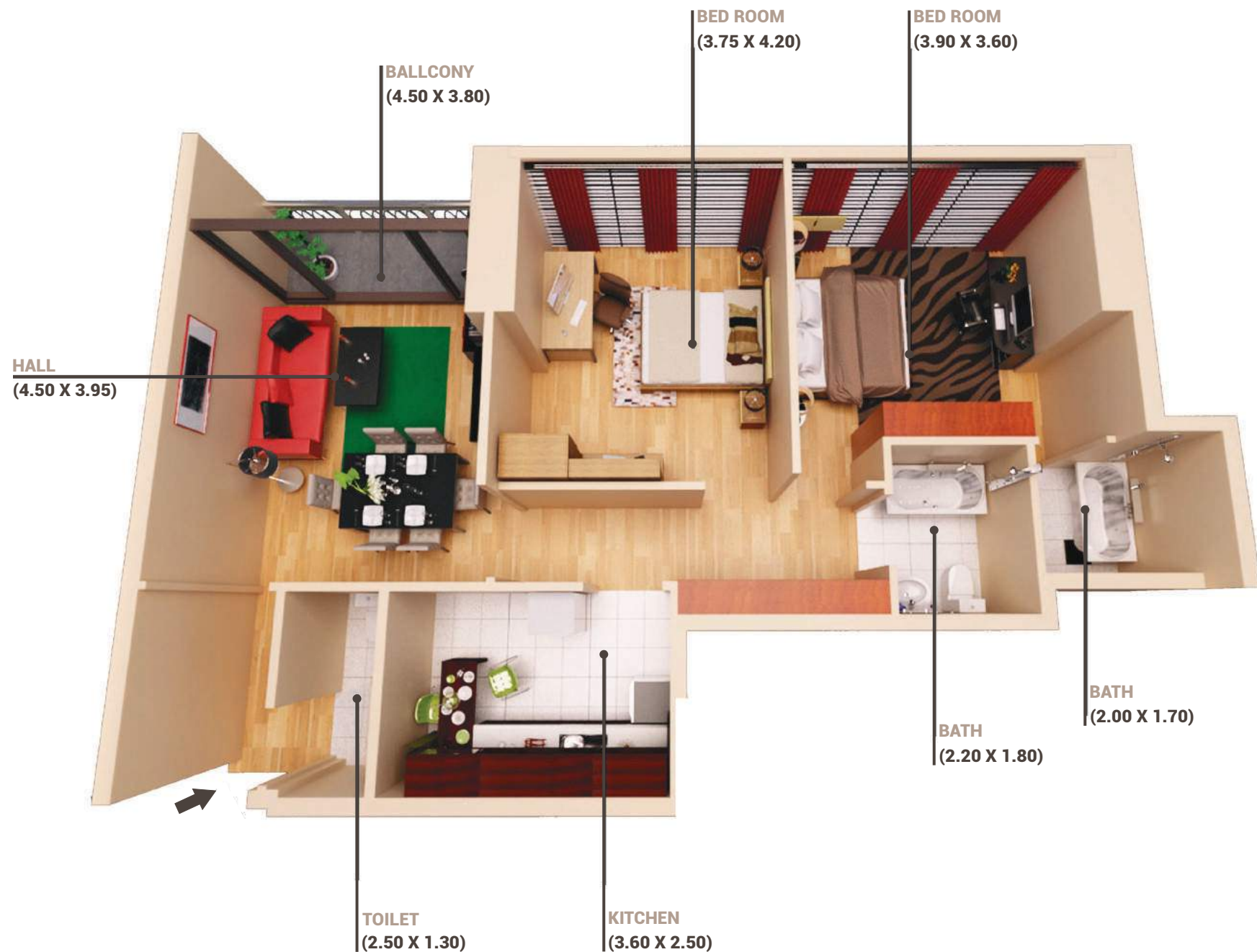


TYPICAL FLOOR

FLAT NO. 2

3 BED ROOM

Gross Area (sq m)	-	168.82
Gross Area (Sq ft)	-	1817.20



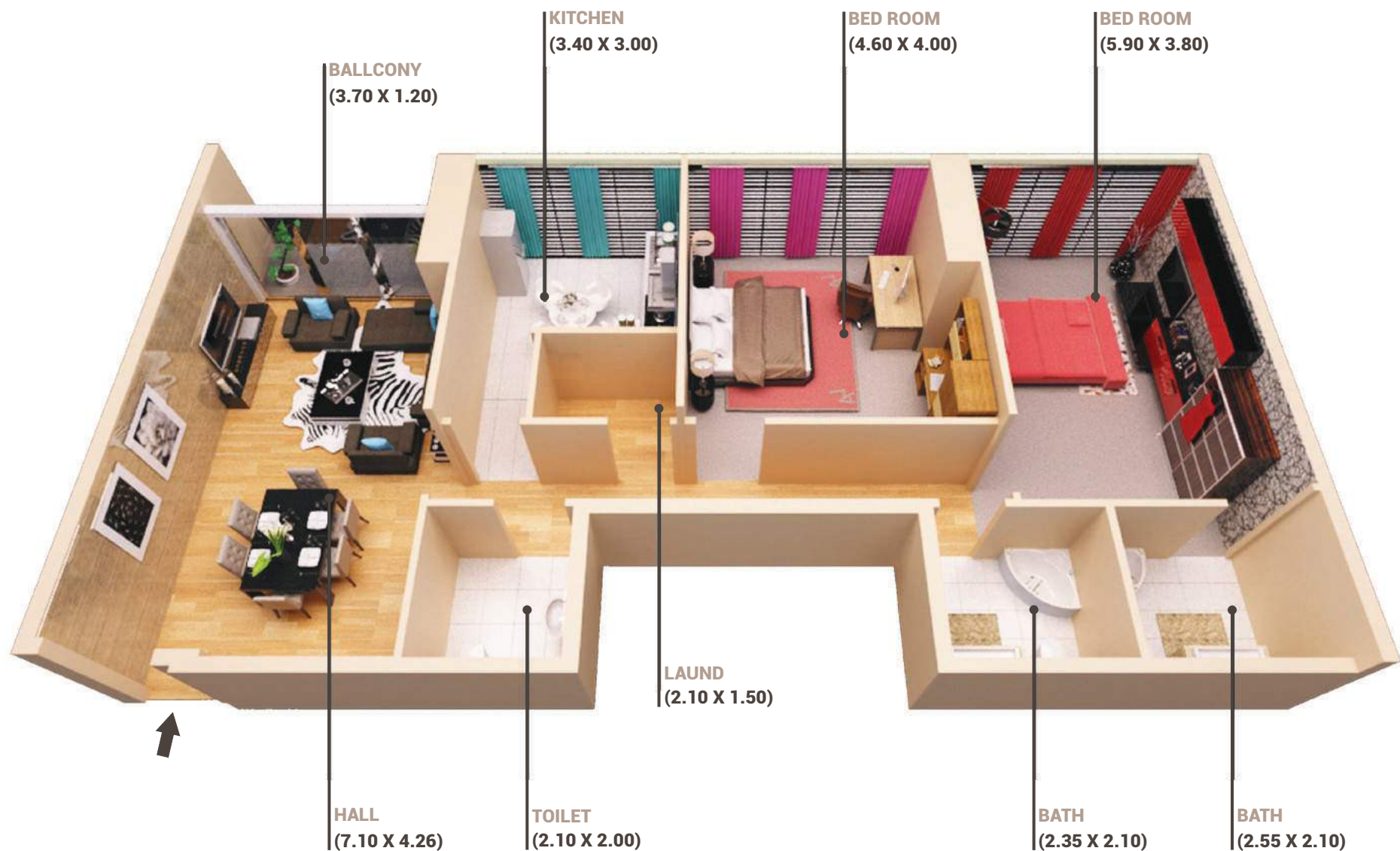
TYPICAL FLOOR

FLAT NO. 1

2 BED ROOM

Gross Area (sq m)	-	116.95
Gross Area (Sq ft)	-	1258.90

1. All dimensions are in imperial and metric, and measurement and are measured from start to finish excluding construction tolerances. 2. All materials, dimensions, and drawings are approximate only. 3. Above information is subject to change without notice and is at developer's absolute discretion. 4. Actual area may vary from the stated area. 5. All images used are for illustrative purposes only and do not represent the actual size, features, specifications, fittings, and furnishings. 6. The developer reserves the right to make revisions / alterations, at it's absolute discretion, without any liability whatsoever.

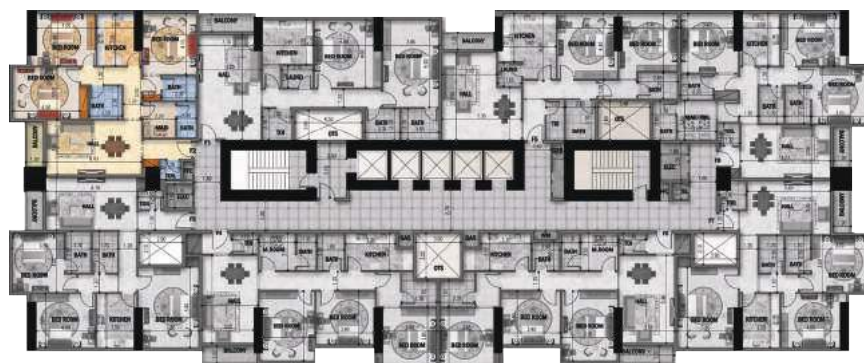
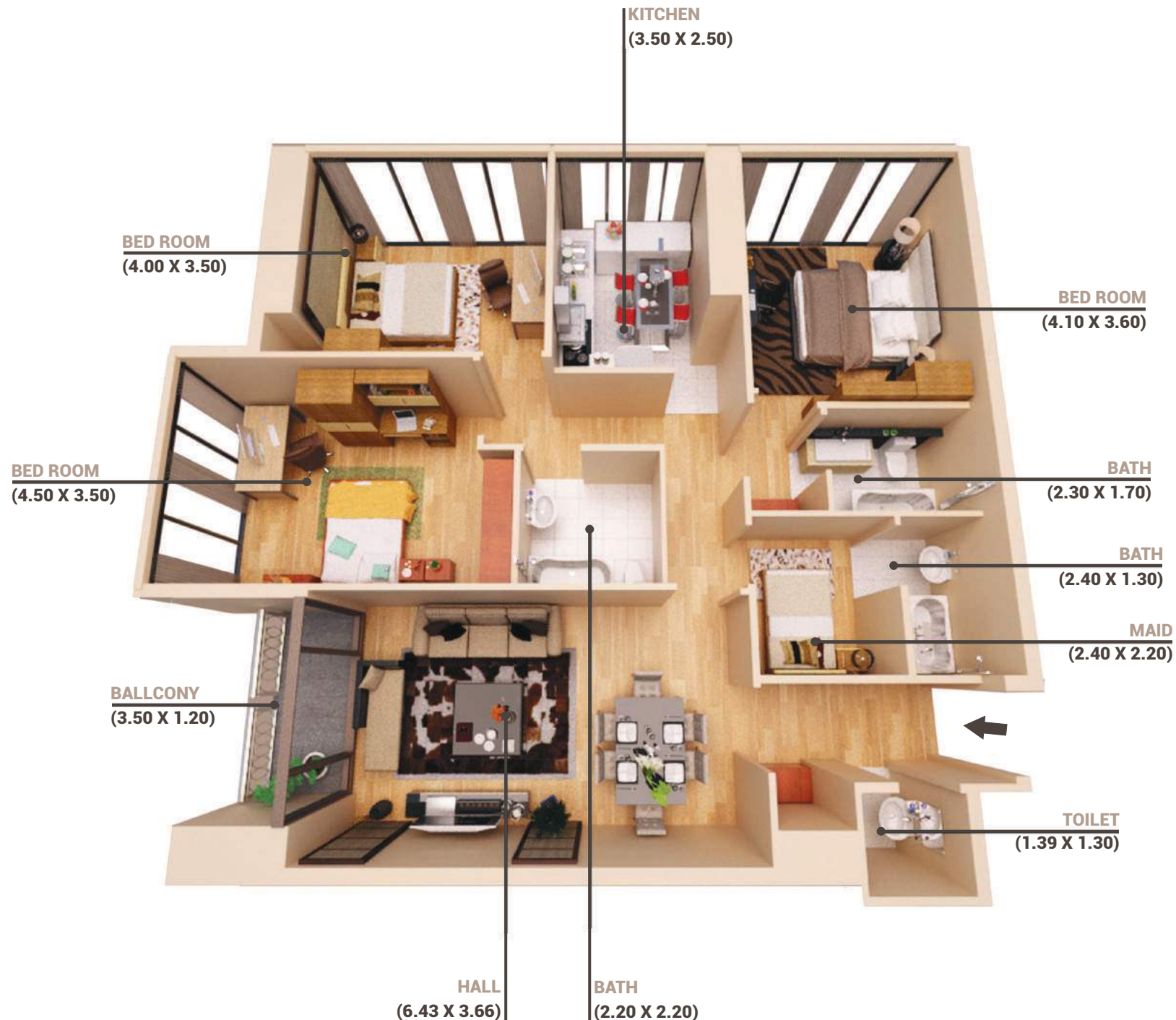


23RD TYPICAL FLOOR

FLAT NO. 1

2 BED ROOM

Gross Area (sq m)	-	159.74
Gross Area (Sq ft)	-	1719.44



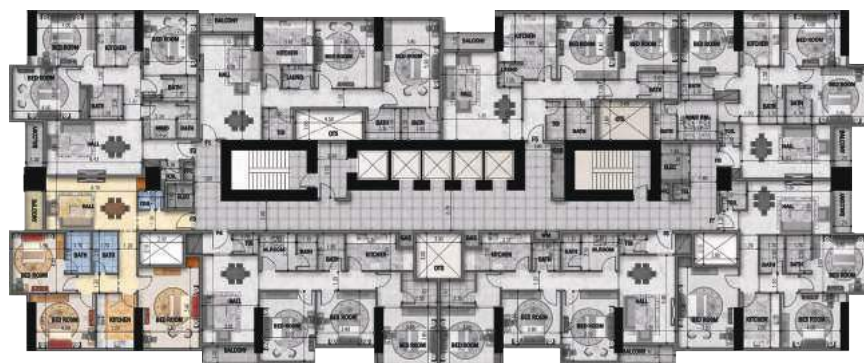
23RD TYPICAL FLOOR

FLAT NO. 2

3 BED ROOM

Gross Area (sq m)	-	167.19
Gross Area (Sq ft)	-	1799.67

1. All dimensions are in imperial and metric, and measurement and are measured from start to finish excluding construction tolerances. 2. All materials, dimensions, and drawings are approximate only. 3. Above information is subject to change without notice and is at developer's absolute discretion. 4. Actual area may vary from the stated area. 5. All images used are for illustrative purposes only and do not represent the actual size, features, specifications, fittings, and furnishings. 6. The developer reserves the right to make revisions / alterations, at it's absolute discretion, without any liability whatsoever.



HALL
(6.43 X 3.66)

23RD TYPICAL FLOOR

FLAT NO. 3

3 BED ROOM

Gross Area (sq m)	-	165.65
Gross Area (Sq ft)	-	1783.03



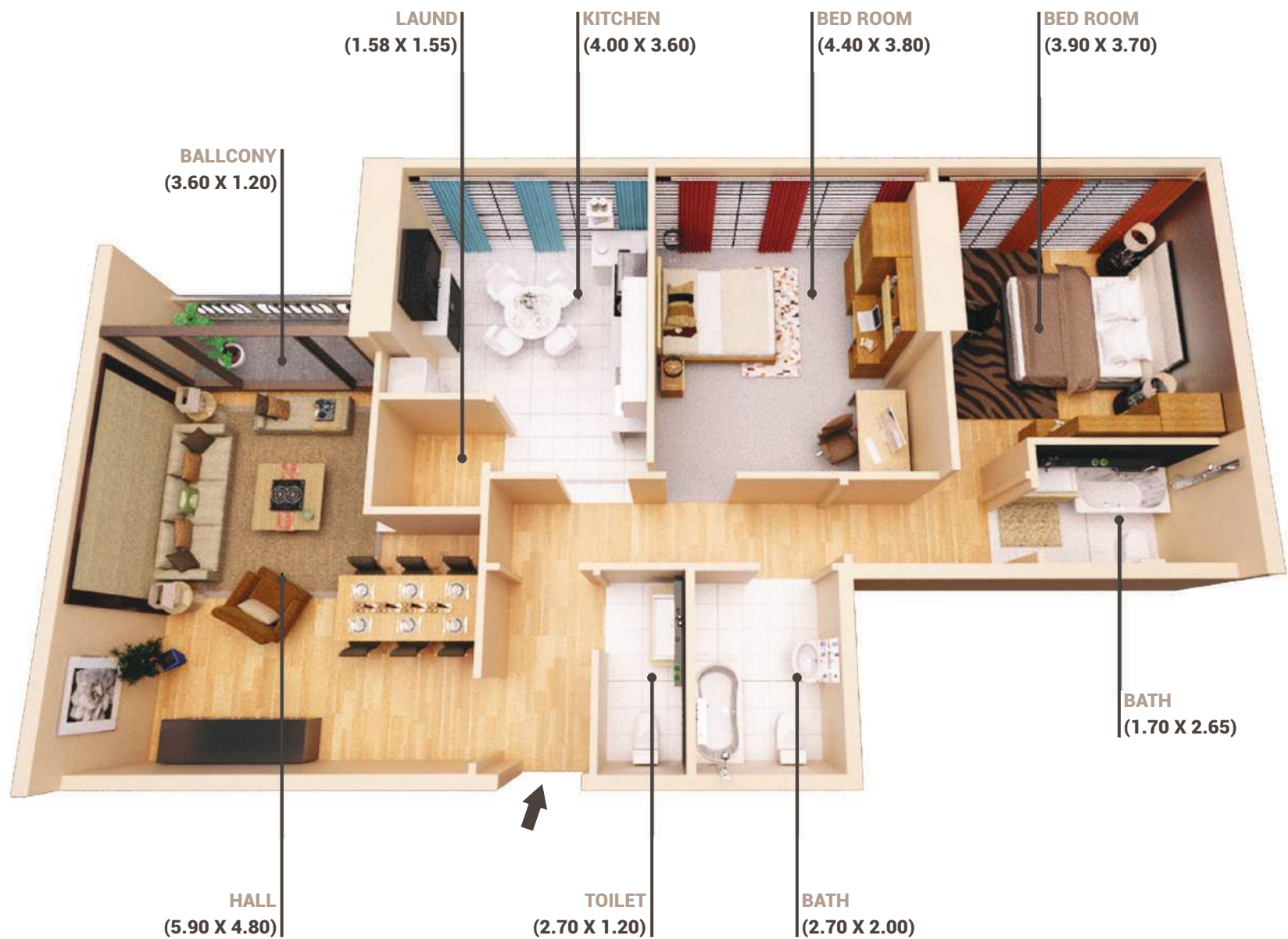
23RD TYPICAL FLOOR

FLAT NO. 4

3 BED ROOM

Gross Area (sq m)	-	170.05
Gross Area (Sq ft)	-	1830.39

1. All dimensions are in imperial and metric, and measurement and are measured from start to finish excluding construction tolerances. 2. All materials, dimensions, and drawings are approximate only. 3. Above information is subject to change without notice and is at developer's absolute discretion. 4. Actual area may vary from the stated area. 5. All images used are for illustrative purposes only and do not represent the actual size, features, specifications, fittings, and furnishings. 6. The developer reserves the right to make revisions / alterations, at it's absolute discretion, without any liability whatsoever.

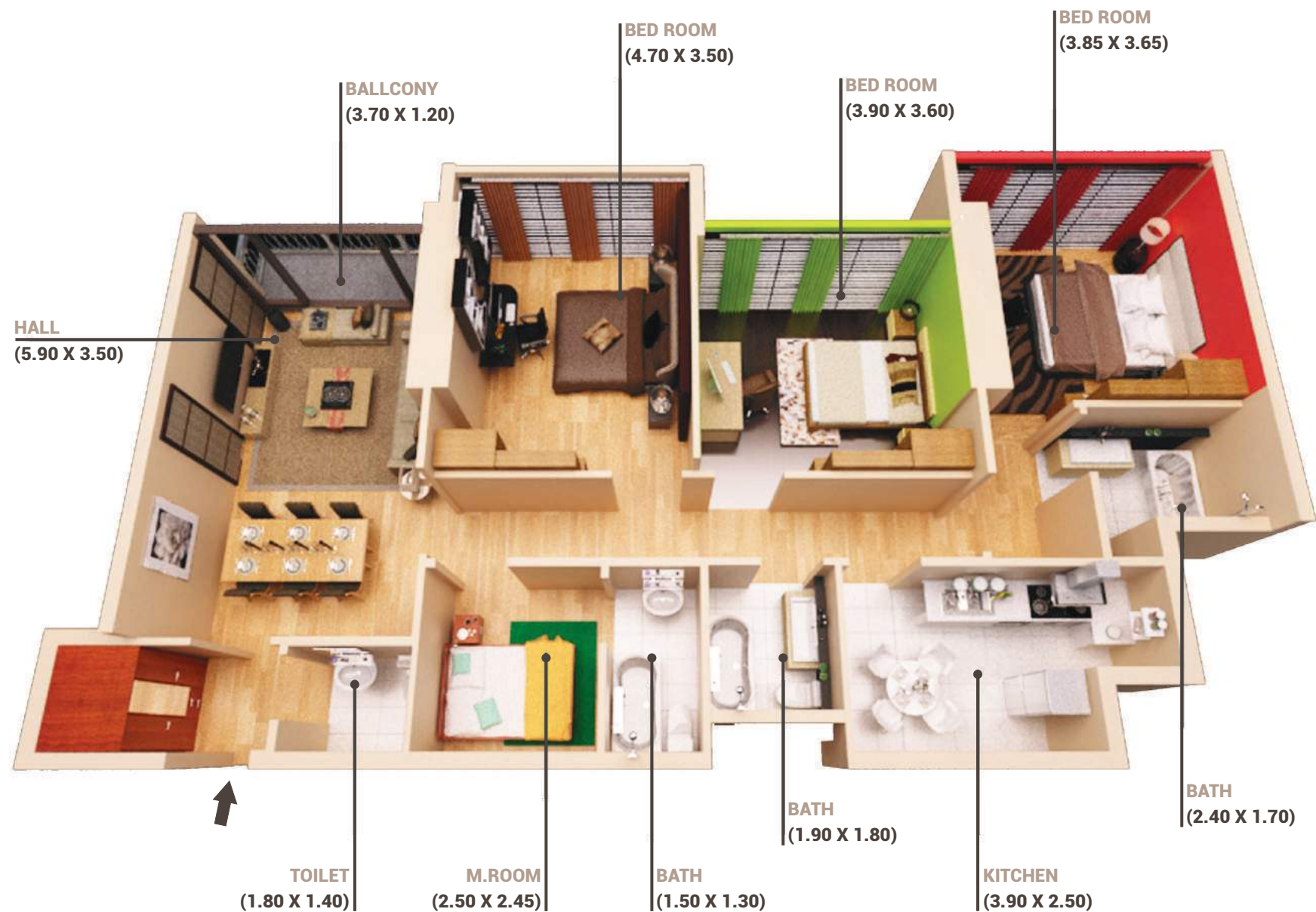


23RD TYPICAL FLOOR

FLAT NO. 5

2 BED ROOM

Gross Area (sq m)	-	151.05
Gross Area (Sq ft)	-	1625.92



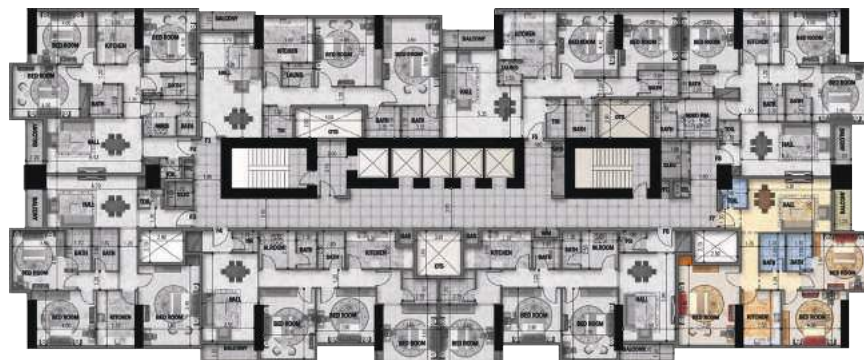
23RD TYPICAL FLOOR

FLAT NO. 6

3 BED ROOM

Gross Area (sq m)	-	169.41
Gross Area (Sq ft)	-	1823.55

1. All dimensions are in imperial and metric, and measurement and are measured from start to finish excluding construction tolerances. 2. All materials, dimensions, and drawings are approximate only. 3. Above information is subject to change without notice and is at developer's absolute discretion. 4. Actual area may vary from the stated area. 5. All images used are for illustrative purposes only and do not represent the actual size, features, specifications, fittings, and furnishings. 6. The developer reserves the right to make revisions / alterations, at it's absolute discretion, without any liability whatsoever.

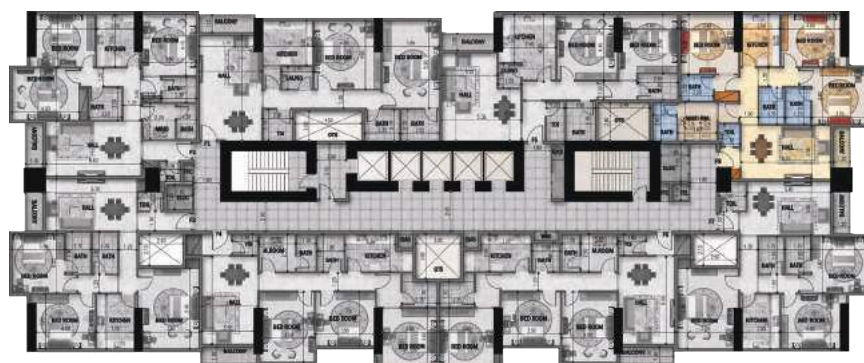
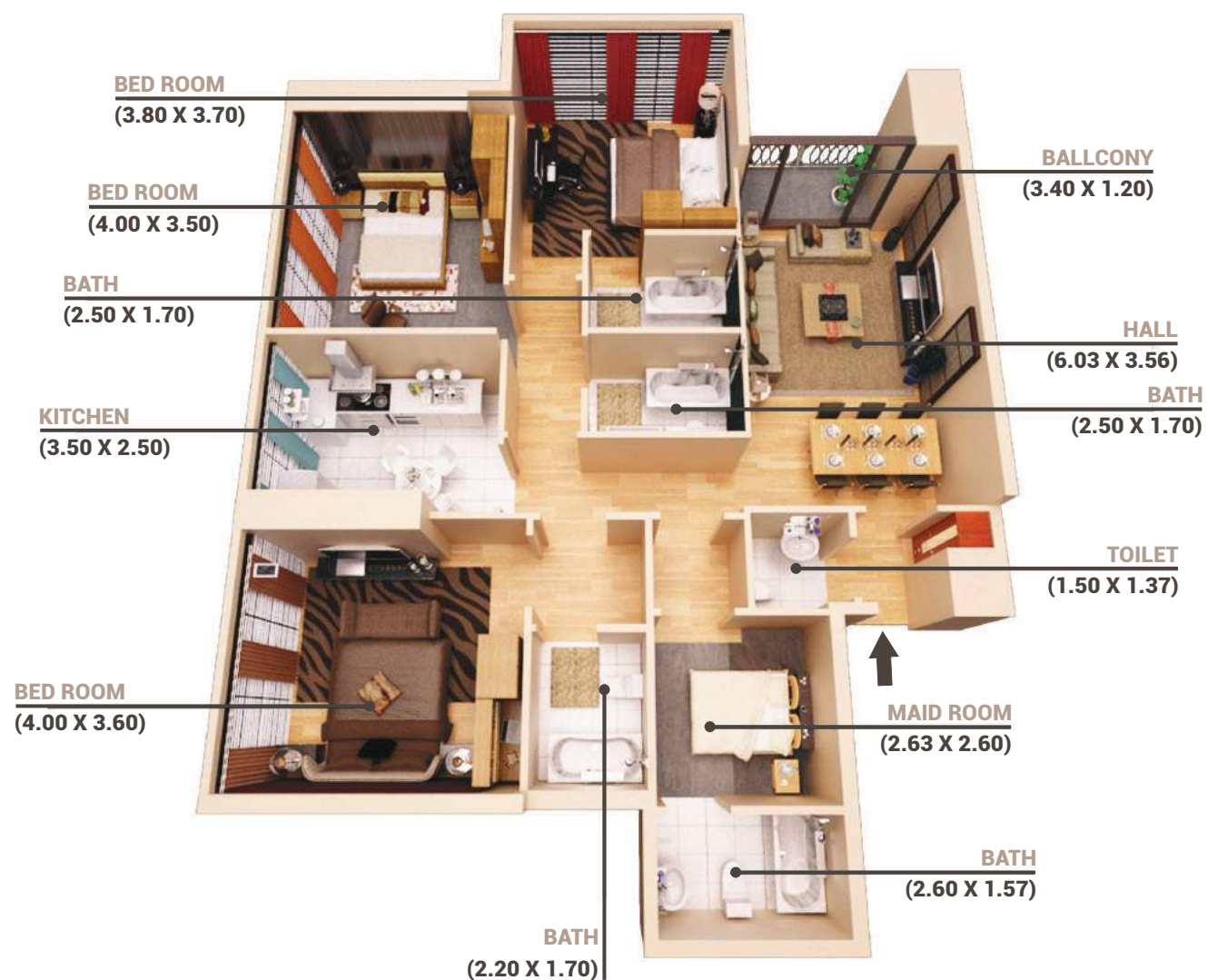


TYPICAL FLOOR

FLAT NO. 7

3 BED ROOM

Gross Area (sq m)	-	154.44
Gross Area (Sq ft)	-	1662.42



23RD TYPICAL FLOOR

FLAT NO. 8

3 BED ROOM

Gross Area (sq m)	-	170.35
Gross Area (Sq ft)	-	1833.61

1. All dimensions are in imperial and metric, and measurement and are measured from start to finish excluding construction tolerances. 2. All materials, dimensions, and drawings are approximate only. 3. Above information is subject to change without notice and is at developer's absolute discretion. 4. Actual area may vary from the stated area. 5. All images used are for illustrative purposes only and do not represent the actual size, features, specifications, fittings, and furnishings. 6. The developer reserves the right to make revisions / alterations, at it's absolute discretion, without any liability whatsoever.



FAMILY TOWER | ART TOWER | AFAMIA TOWER 2 | SARKOA TOWER | SMART TOWER 2



SMART TOWER



AL MAHRA RESORT



SMART TOWER 3



AL MAZRA TOWER



AL MAZRA TOWER



AFAMIA TOWER

