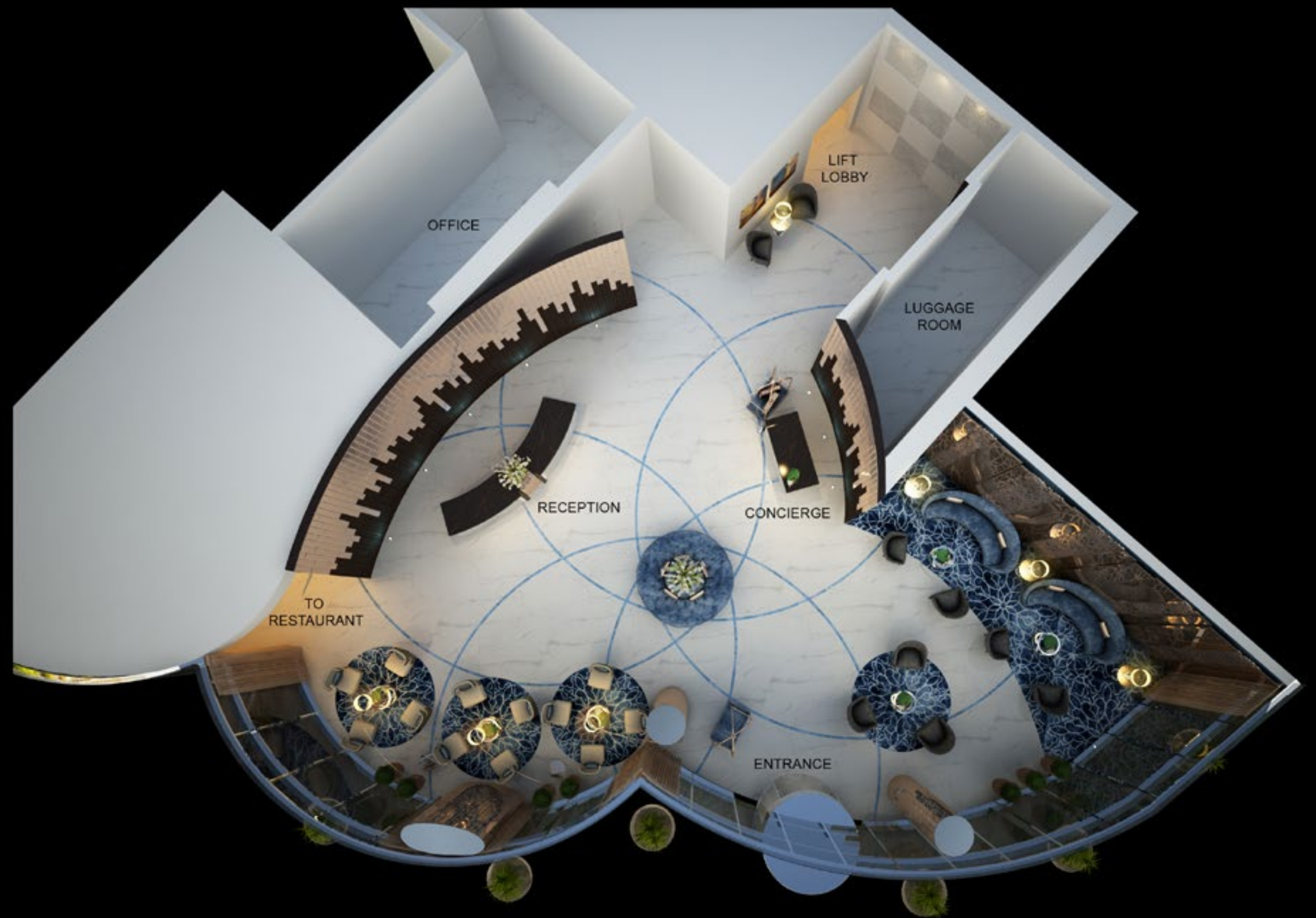


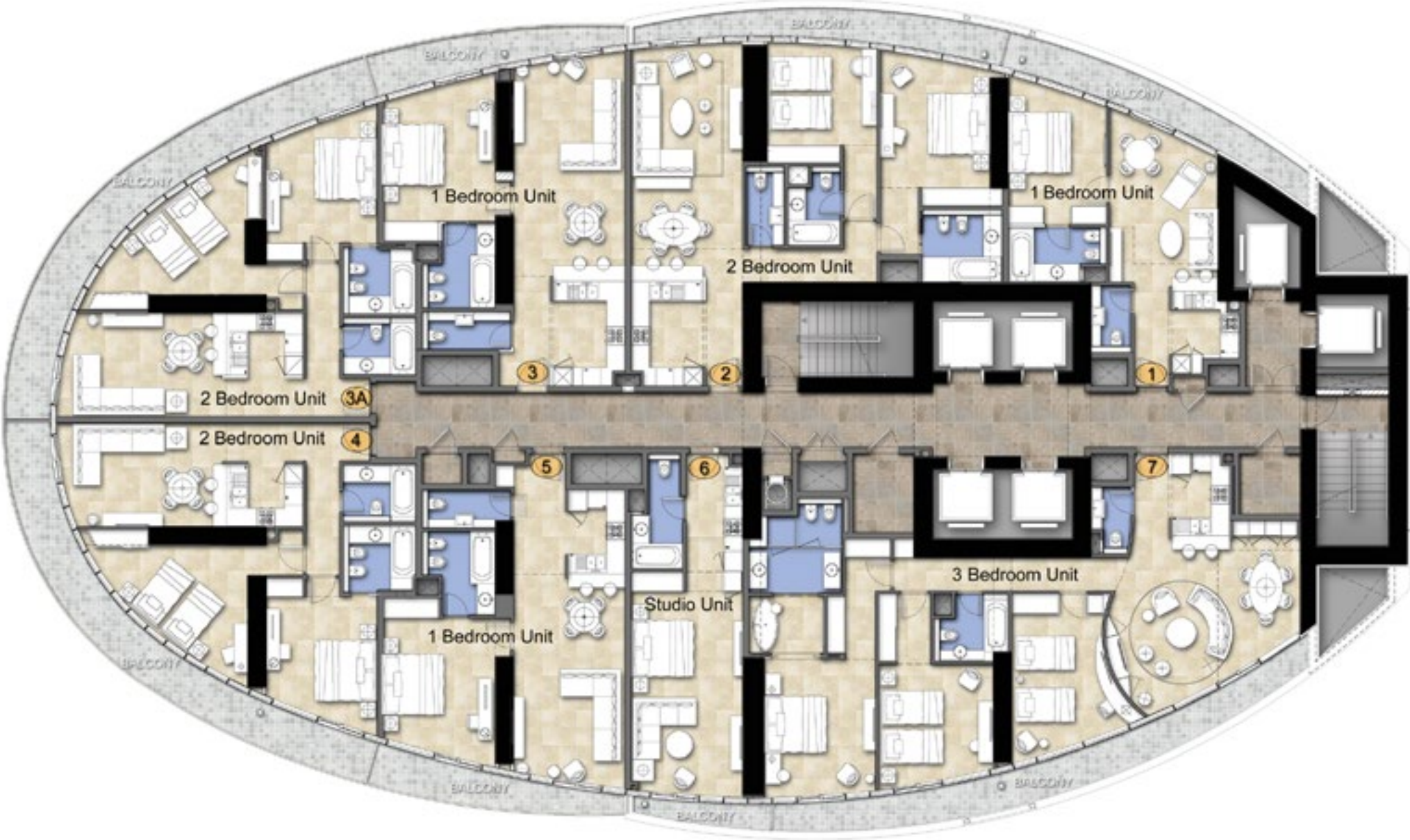
# FLOOR PLANS

## **DAMAC** **MAISON ROYALE** THE DISTINCTION

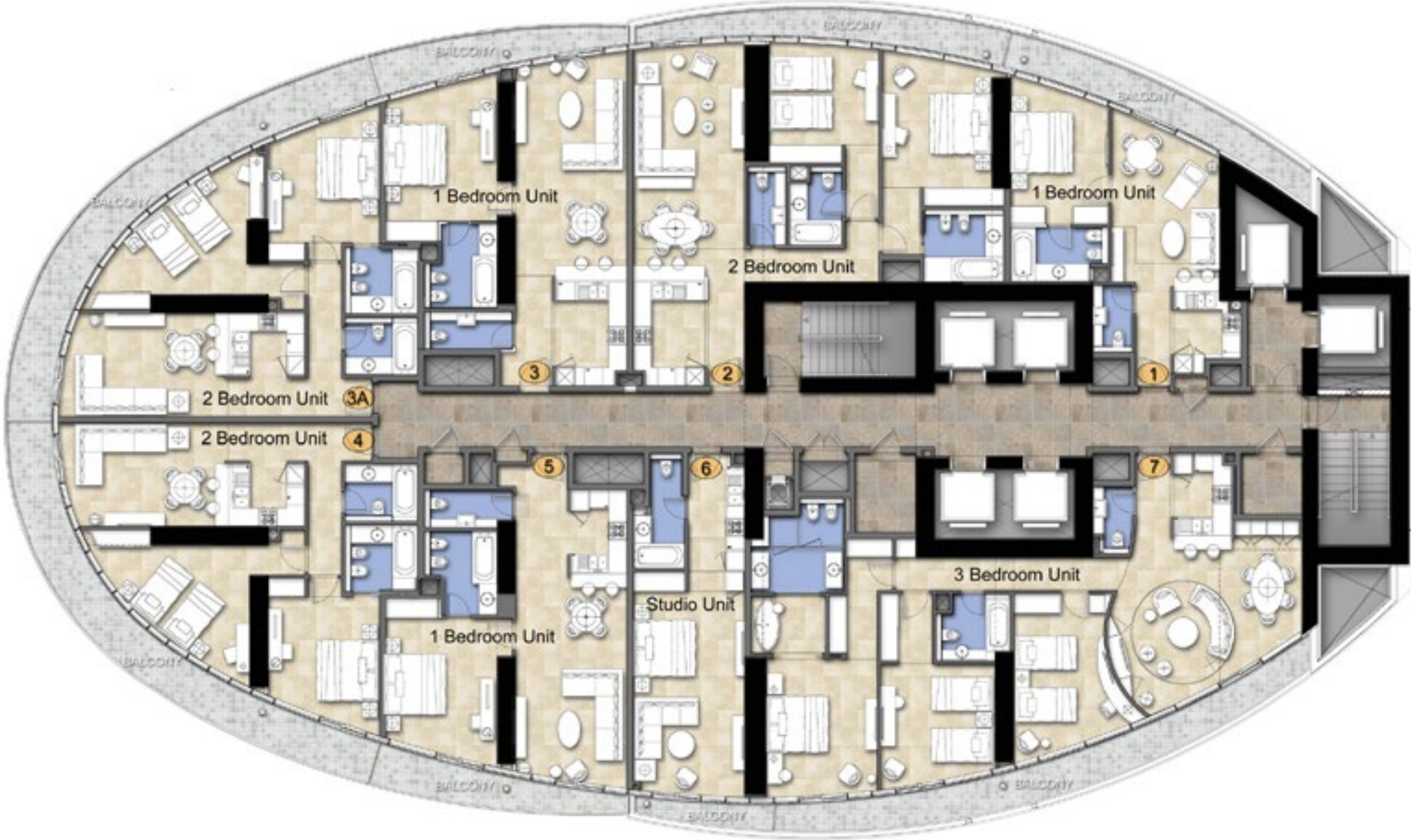




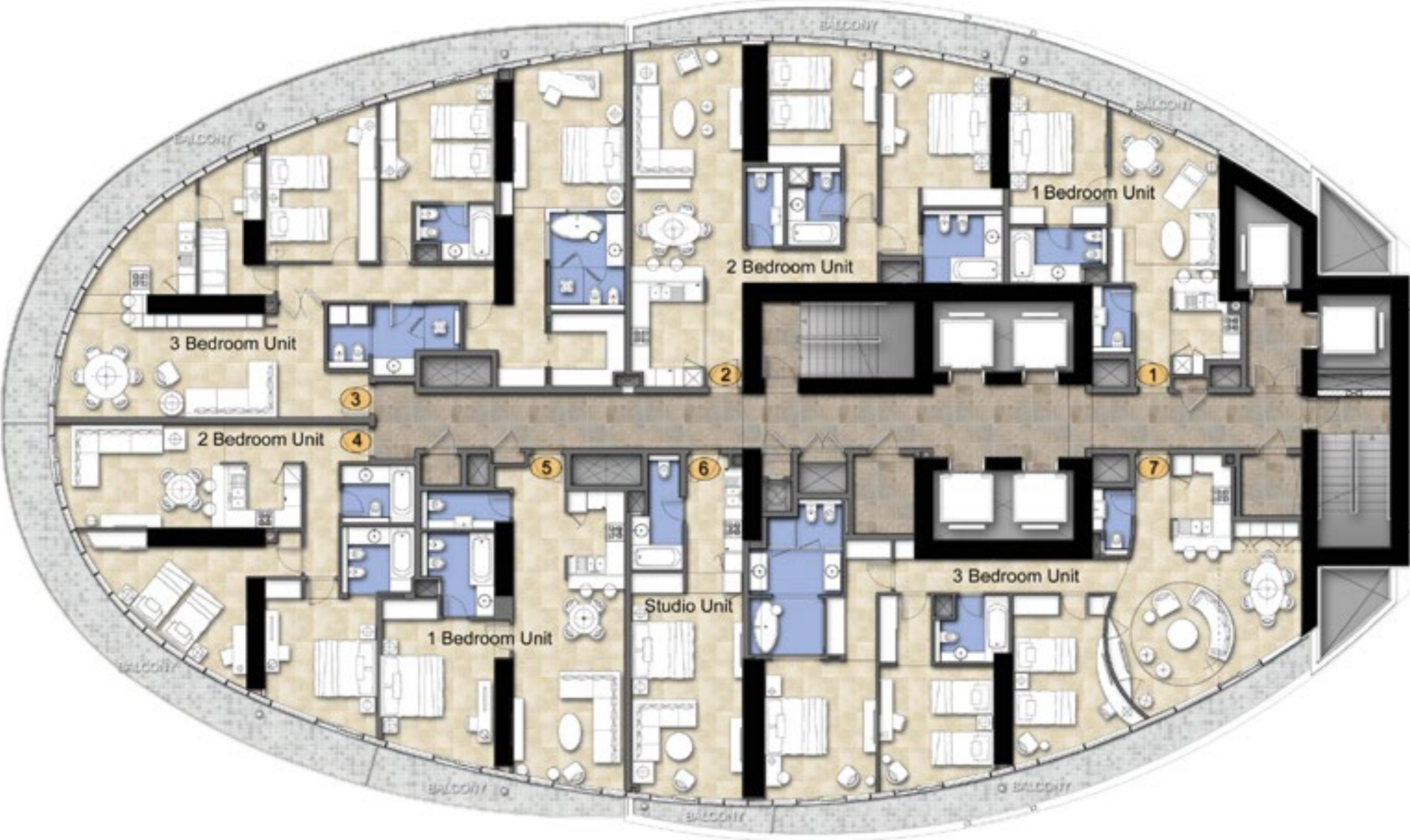
TYPICAL FLOOR PLANS



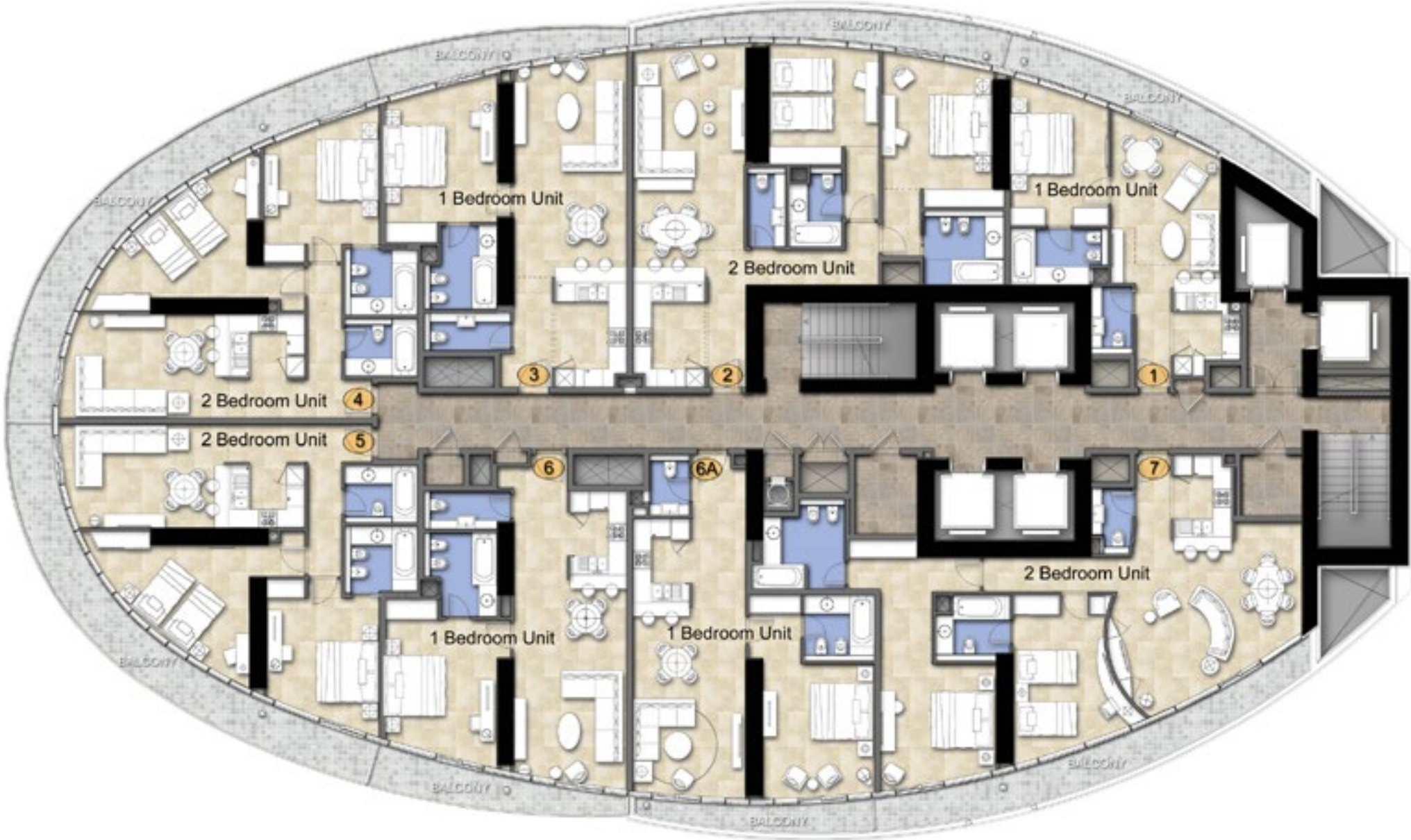
LEVEL 7



LEVELS 9 - 11 & 26



LEVELS 8, 12 - 24



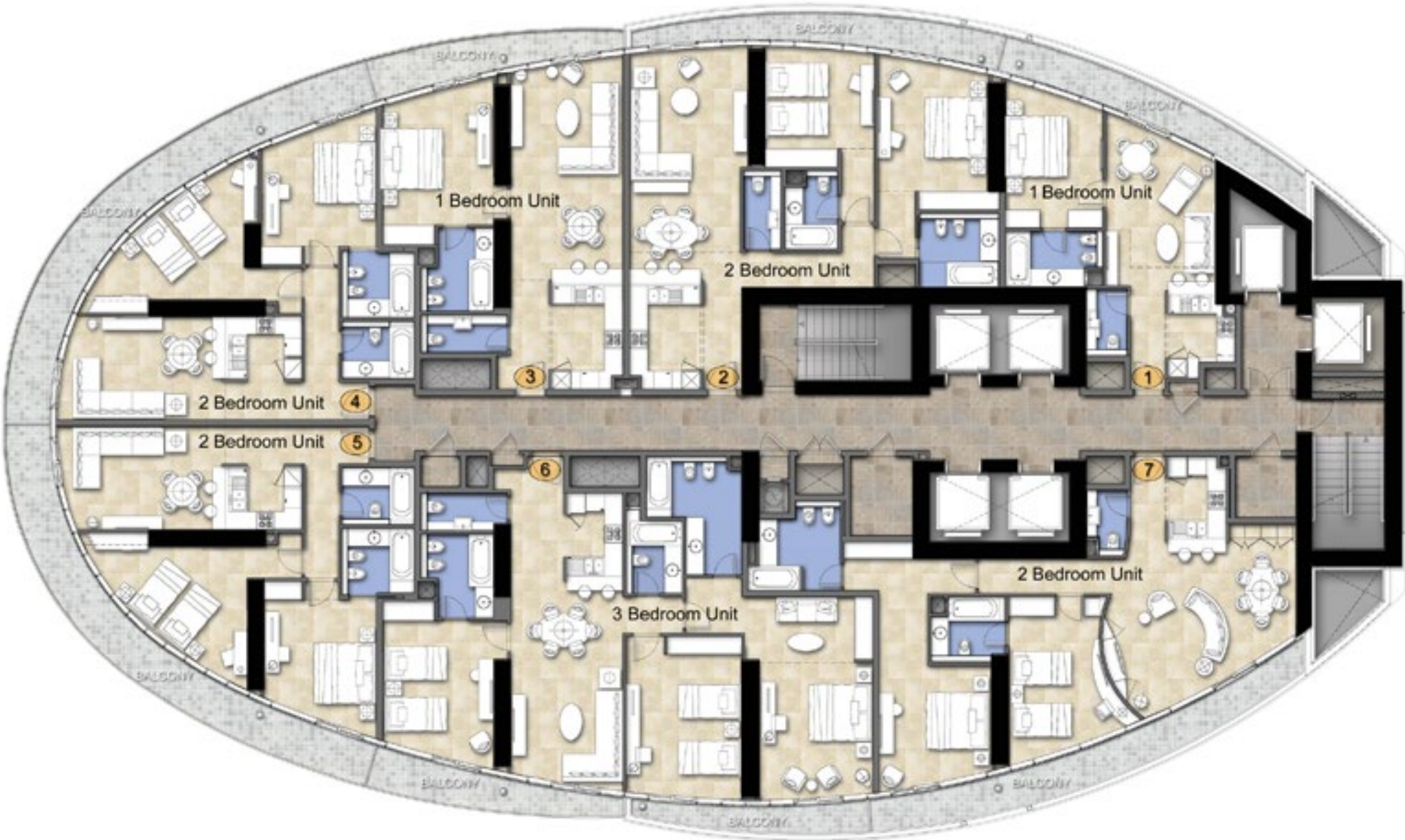
LEVELS 27 & 29

Disclaimer: all pictures, plans, layouts, information, data and details included in this brochure are indicative only and may change at any time up to the final 'as built' status in accordance with final designs of the project, regulatory approvals and planning permissions.

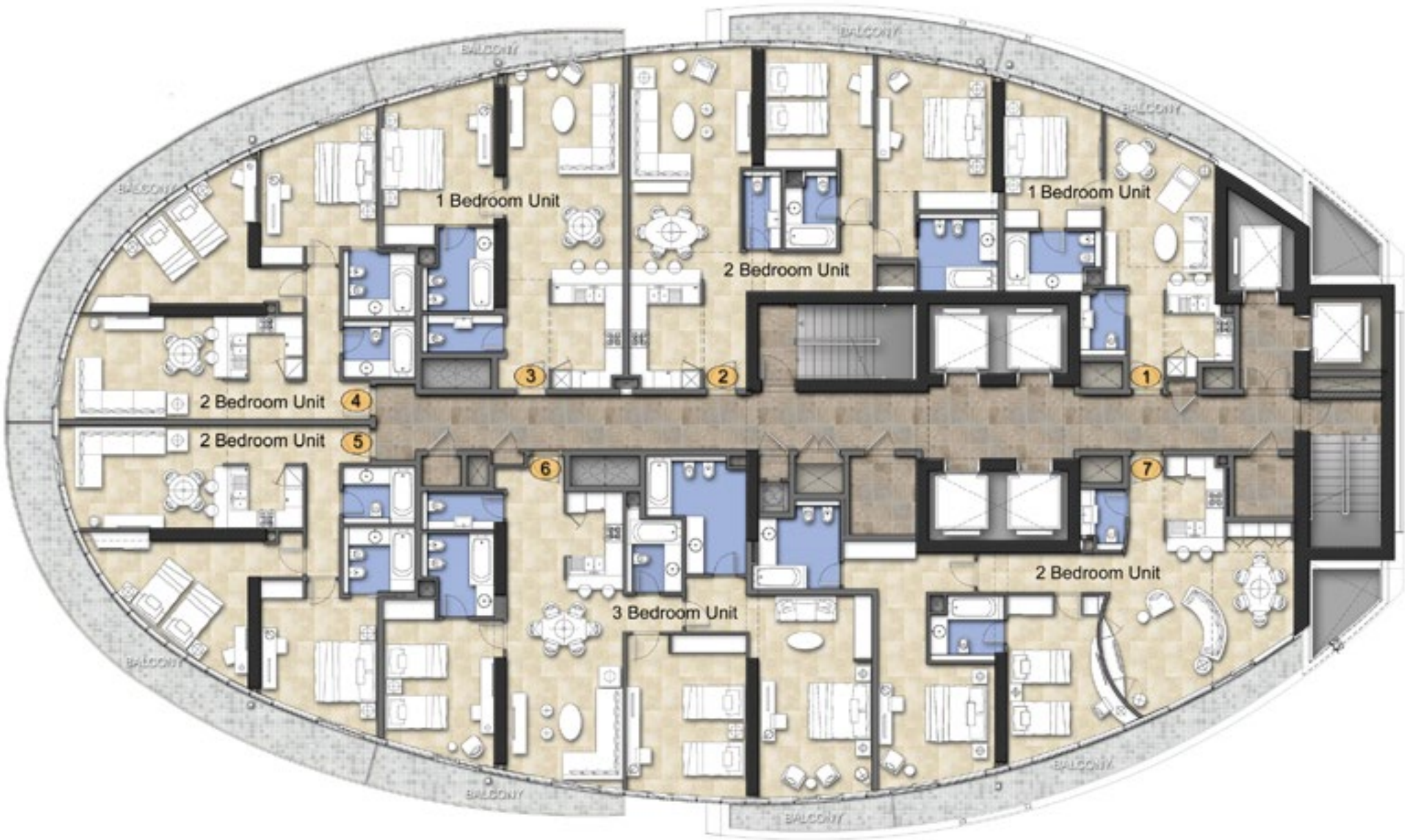
Disclaimer: all pictures, plans, layouts, information, data and details included in this brochure are indicative only and may change at any time up to the final 'as built' status in accordance with final designs of the project, regulatory approvals and planning permissions.



TYPICAL FLOOR PLANS

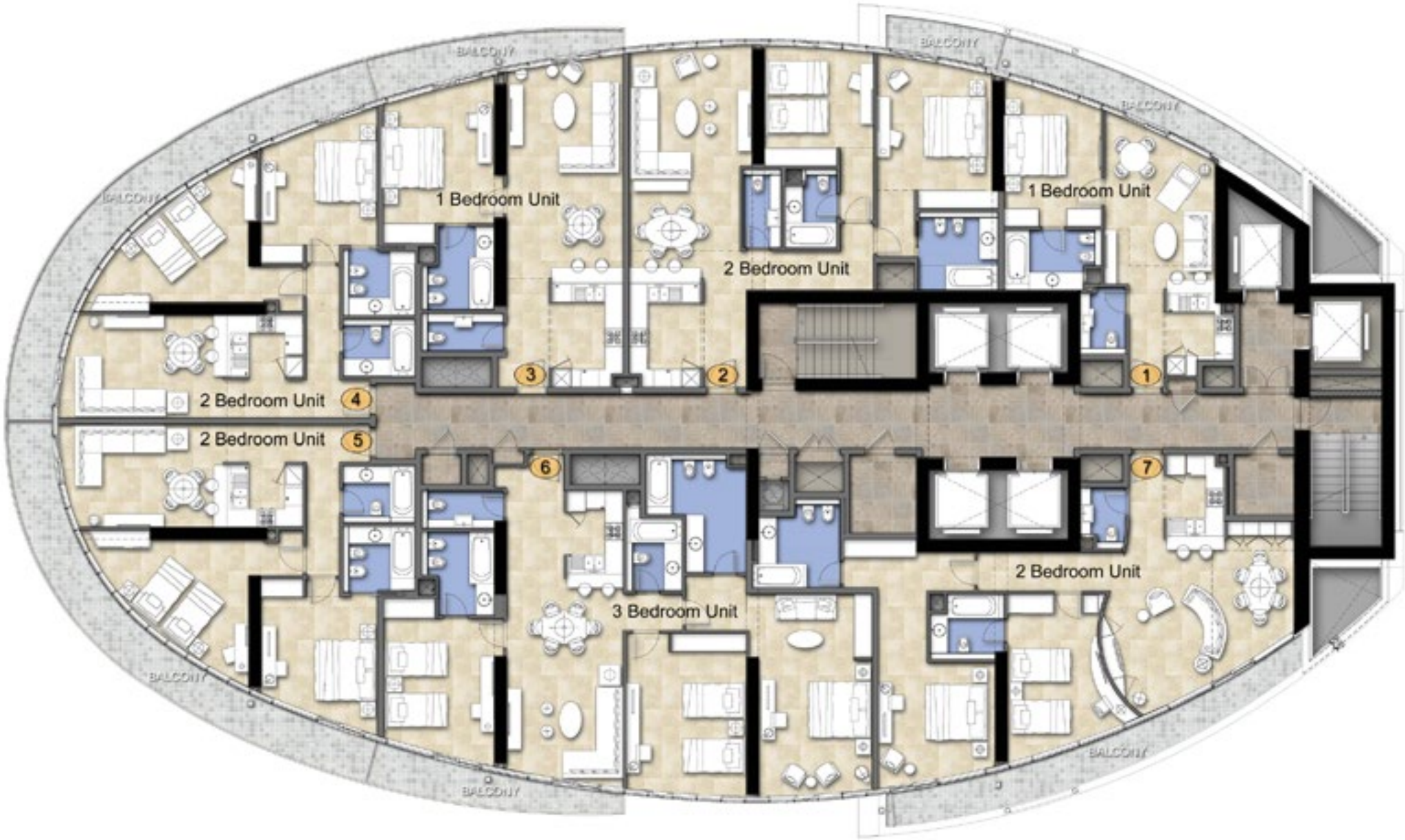


LEVELS 28 & 30 - 39

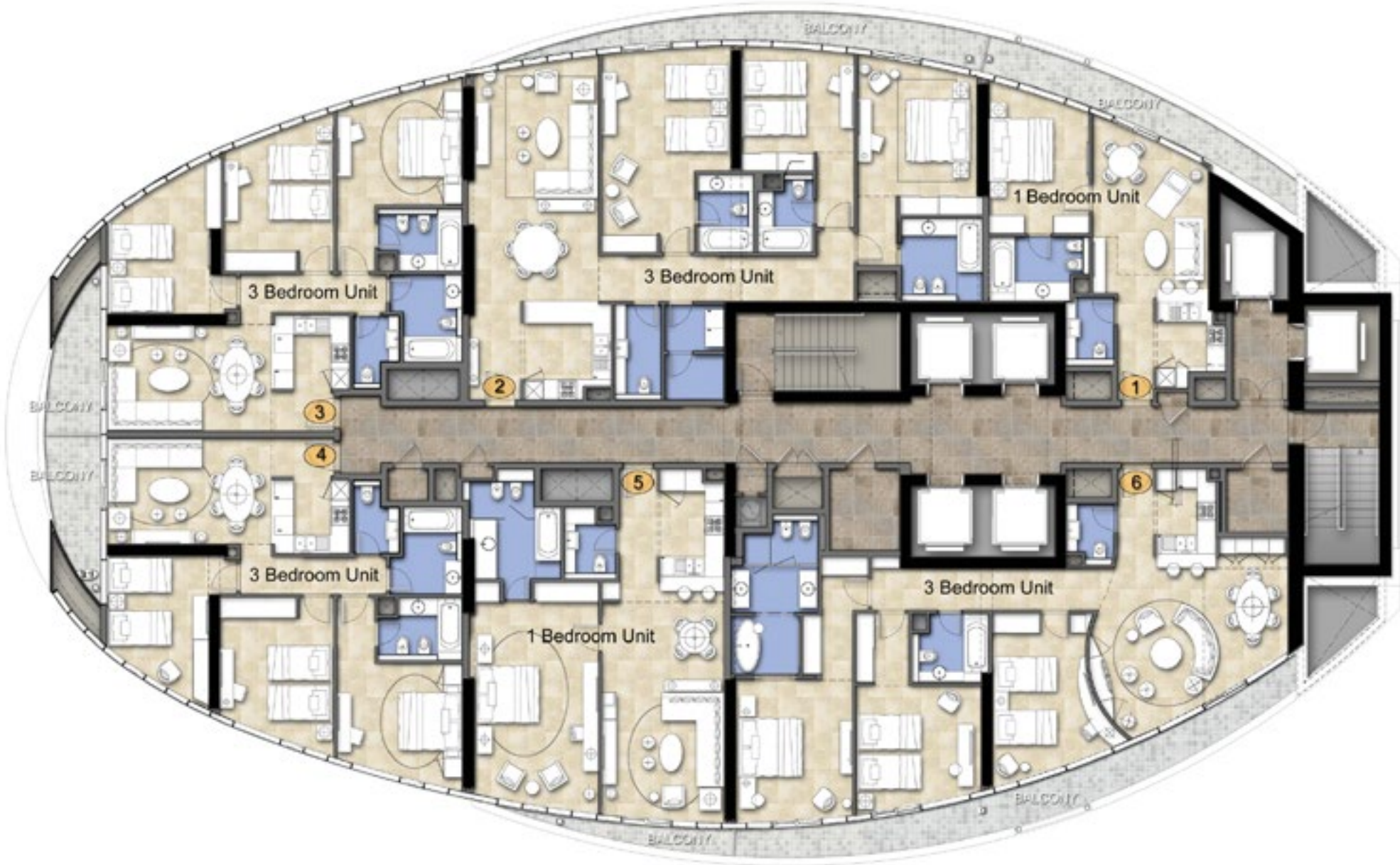


LEVELS 40 - 45

TYPICAL FLOOR PLANS



LEVEL 46



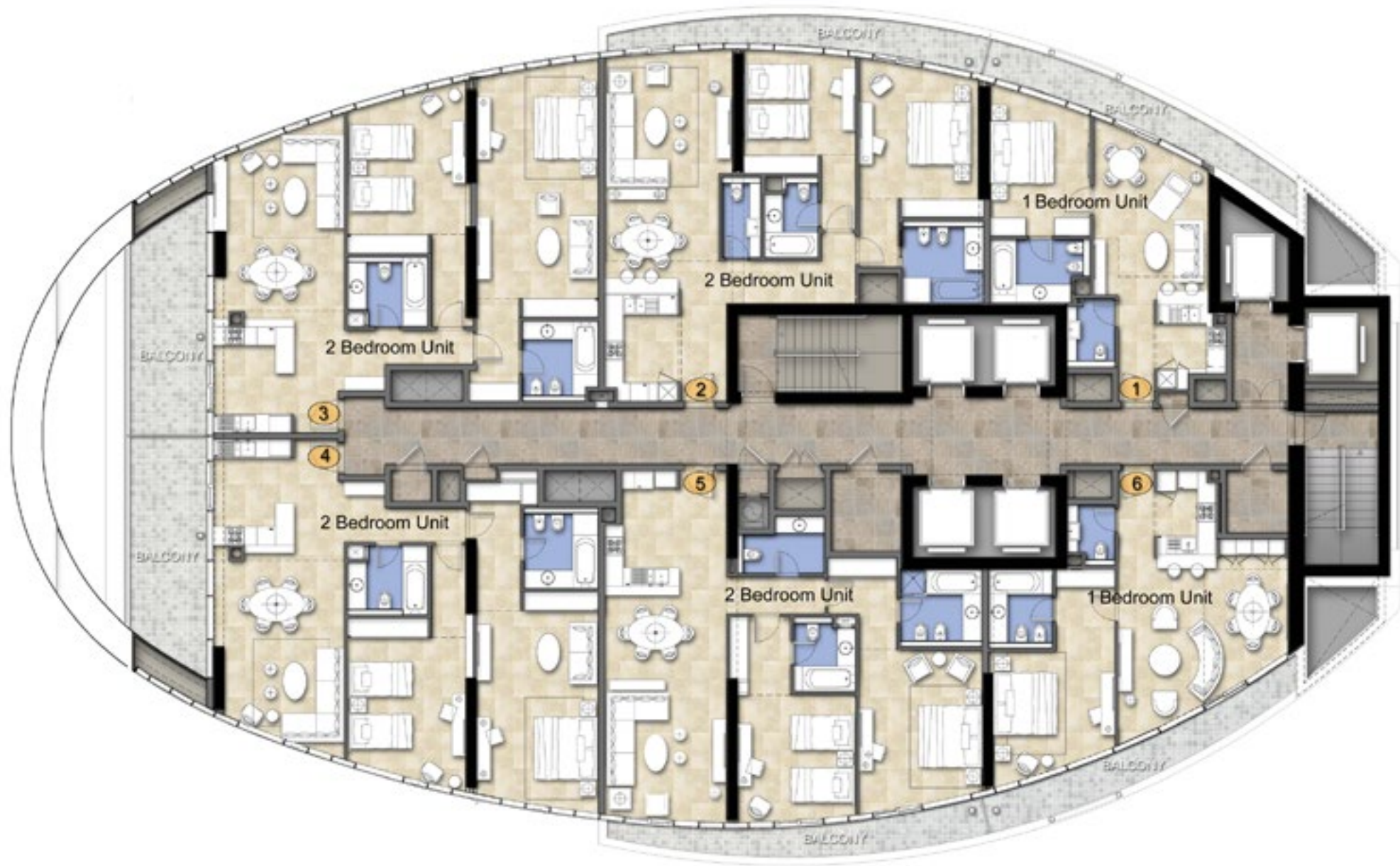
LEVEL 47

Disclaimer: all pictures, plans, layouts, information, data and details included in this brochure are indicative only and may change at any time up to the final 'as built' status in accordance with final designs of the project, regulatory approvals and planning permissions.

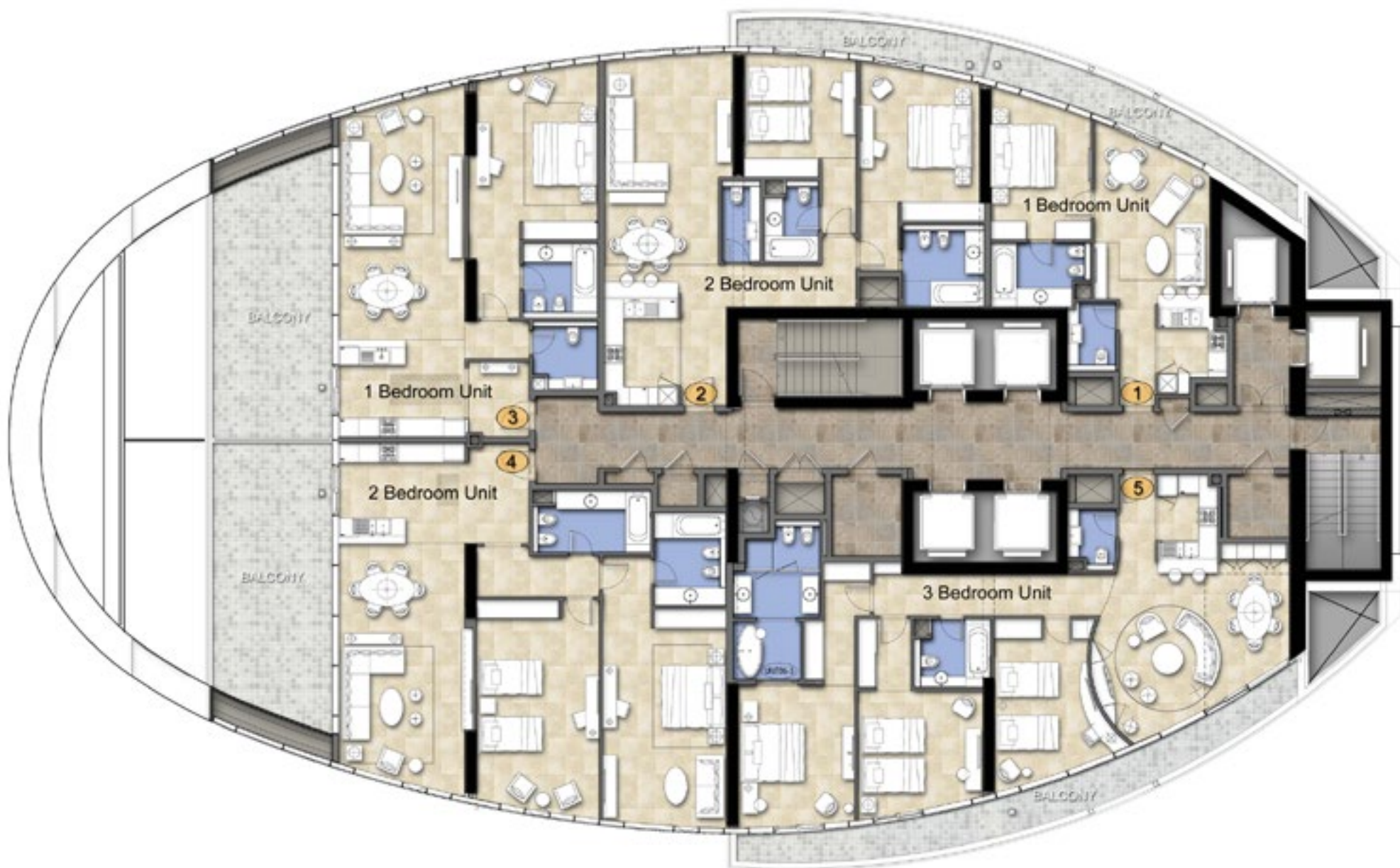
Disclaimer: all pictures, plans, layouts, information, data and details included in this brochure are indicative only and may change at any time up to the final 'as built' status in accordance with final designs of the project, regulatory approvals and planning permissions.



TYPICAL FLOOR PLANS

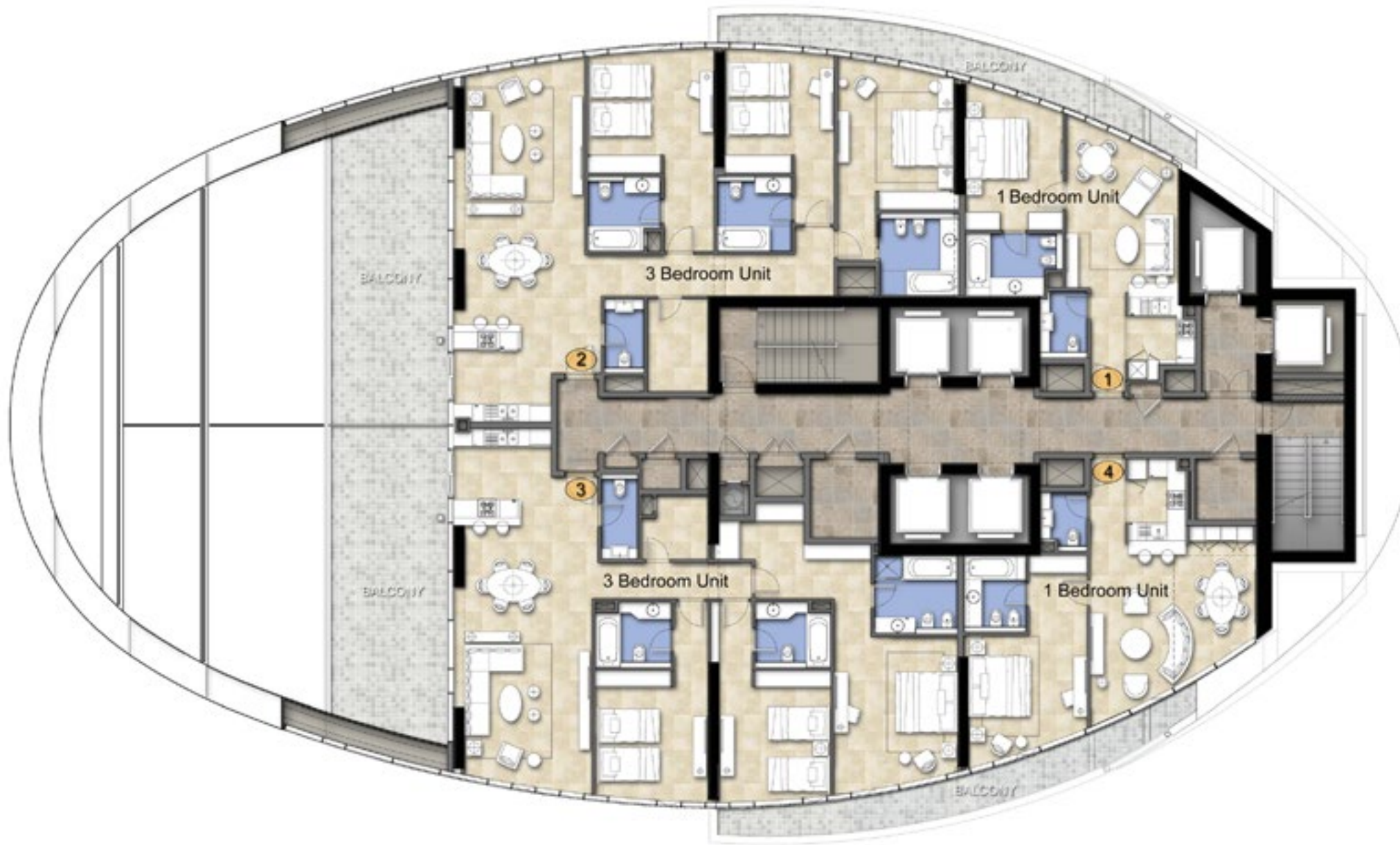


LEVEL 48



LEVEL 49

TYPICAL FLOOR PLANS



LEVEL 50



LEVELS 51 & 52

Disclaimer: all pictures, plans, layouts, information, data and details included in this brochure are indicative only and may change at any time up to the final 'as built' status in accordance with final designs of the project, regulatory approvals and planning permissions.

Disclaimer: all pictures, plans, layouts, information, data and details included in this brochure are indicative only and may change at any time up to the final 'as built' status in accordance with final designs of the project, regulatory approvals and planning permissions.