

# SUNSET

AT CREEK BEACH

FLOOR PLANS

EMAAR

**DUBAI CREEK**  
HARBOUR

**SUNSET AT  
CREEK BEACH**

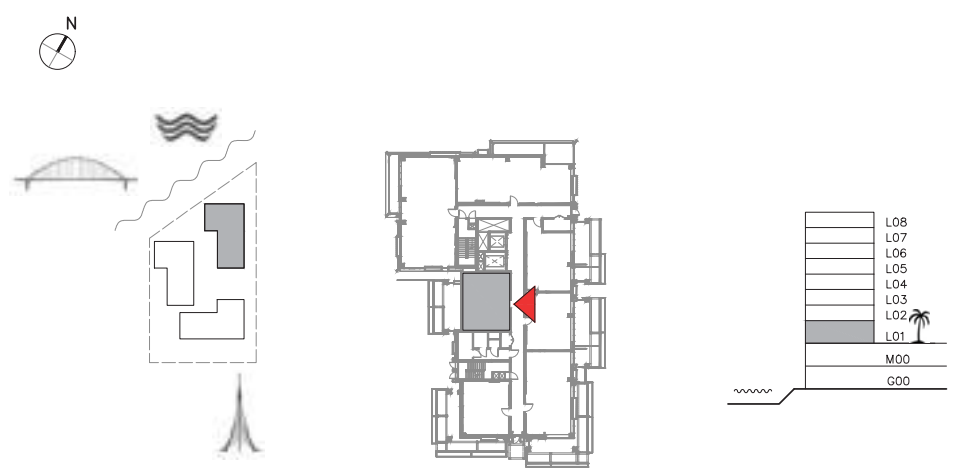
BUILDING 1

LEVEL 1

UNIT 101

**1 BEDROOM**

APARTMENT AREA	59.87 SQ.M.	644.44 SQ.FT.
BALCONY AREA	29.86 SQ.M.	321.41 SQ.FT.
TOTAL AREA	89.73 SQ.M.	965.85 SQ.FT.



FLOOR PLAN 1. All dimensions are in imperial and metric, and measured from finish to finish excluding construction tolerances. 2. All materials, dimensions, and drawings are approximate only. 3. Information is subject to change without notice, at developer's absolute discretion. 4. Actual area may vary from the stated area. 5. Drawings not to scale. 6. All images used are for illustrative purpose only and do not represent the actual size, features, specifications, fittings, and furnishings. 7. The developer reserves the right to make revisions / alterations, at its absolute discretion, without any liability whatsoever.

**EMAAR**

**DUBAI CREEK**  
HARBOUR

**SUNSET AT  
CREEK BEACH**

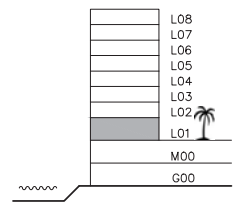
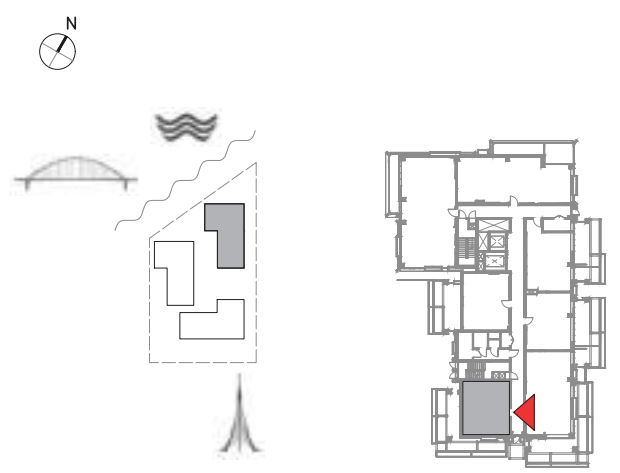
BUILDING 1

LEVEL 1

UNIT 102

**1 BEDROOM**

APARTMENT AREA	57.97 SQ.M.	623.98 SQ.FT.
BALCONY AREA	41.91 SQ.M.	451.12 SQ.FT.
TOTAL AREA	99.88 SQ.M.	1075.10 SQ.FT.



FLOOR PLAN 1. All dimensions are in imperial and metric, and measured from finish to finish excluding construction tolerances. 2. All materials, dimensions, and drawings are approximate only. 3. Information is subject to change without notice, at developer's absolute discretion. 4. Actual area may vary from the stated area. 5. Drawings not to scale. 6. All images used are for illustrative purpose only and do not represent the actual size, features, specifications, fittings, and furnishings. 7. The developer reserves the right to make revisions / alterations, at its absolute discretion, without any liability whatsoever.

**DUBAI CREEK**  
HARBOUR

**SUNSET AT**  
CREEK BEACH

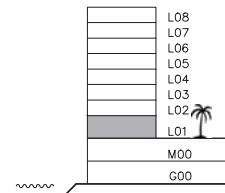
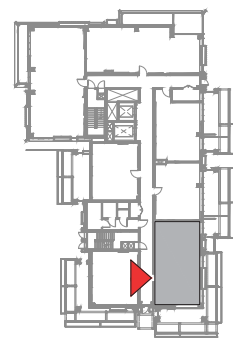
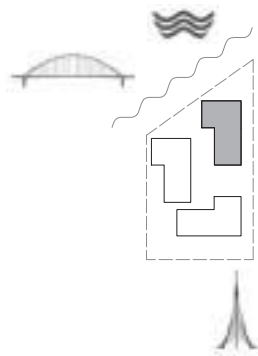
BUILDING 1

LEVEL 1

UNIT 103

**2 BEDROOM**

APARTMENT AREA	88.32 SQ.M.	950.67 SQ.FT.
BALCONY AREA	58.73 SQ.M.	632.16 SQ.FT.
TOTAL AREA	147.05 SQ.M.	1582.83 SQ.FT.



FLOOR PLAN 1. All dimensions are in imperial and metric, and measured from finish to finish excluding construction tolerances. 2. All materials, dimensions, and drawings are approximate only. 3. Information is subject to change without notice, at developer's absolute discretion. 4. Actual area may vary from the stated area. 5. Drawings not to scale. 6. All images used are for illustrative purpose only and do not represent the actual size, features, specifications, fittings, and furnishings. 7. The developer reserves the right to make revisions / alterations, at its absolute discretion, without any liability whatsoever.

**EMAAR**



**DUBAI CREEK**  
HARBOUR

**SUNSET AT  
CREEK BEACH**

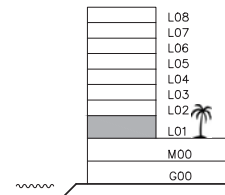
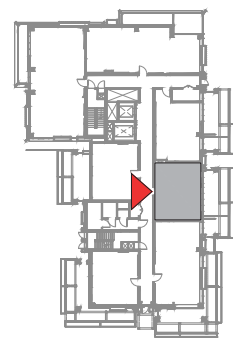
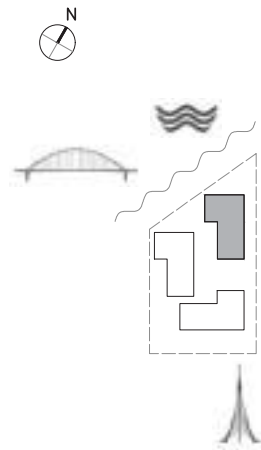
BUILDING 1

LEVEL 1

UNIT 104

**1 BEDROOM**

APARTMENT AREA	59.72 SQ.M.	642.82 SQ.FT.
BALCONY AREA	27.81 SQ.M.	299.34 SQ.FT.
TOTAL AREA	87.53 SQ.M.	942.16 SQ.FT.



FLOOR PLAN 1. All dimensions are in imperial and metric, and measured from finish to finish excluding construction tolerances. 2. All materials, dimensions, and drawings are approximate only. 3. Information is subject to change without notice, at developer's absolute discretion. 4. Actual area may vary from the stated area. 5. Drawings not to scale. 6. All images used are for illustrative purpose only and do not represent the actual size, features, specifications, fittings, and furnishings. 7. The developer reserves the right to make revisions / alterations, at its absolute discretion, without any liability whatsoever.

**EMAAR**

**DUBAI CREEK**  
HARBOUR

**SUNSET AT  
CREEK BEACH**

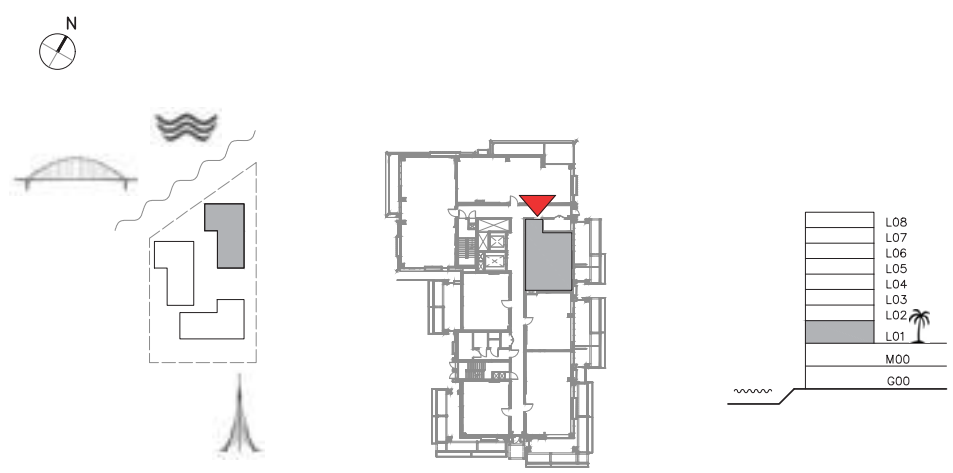
BUILDING 1

LEVEL 1

UNIT 105

**1 BEDROOM**

APARTMENT AREA	65.39 SQ.M.	703.85 SQ.FT.
BALCONY AREA	20.33 SQ.M.	218.83 SQ.FT.
TOTAL AREA	85.72 SQ.M.	922.68 SQ.FT.



FLOOR PLAN 1. All dimensions are in imperial and metric, and measured from finish to finish excluding construction tolerances. 2. All materials, dimensions, and drawings are approximate only. 3. Information is subject to change without notice, at developer's absolute discretion. 4. Actual area may vary from the stated area. 5. Drawings not to scale. 6. All images used are for illustrative purpose only and do not represent the actual size, features, specifications, fittings, and finishings. 7. The developer reserves the right to make revisions / alterations, at its absolute discretion, without any liability whatsoever.

**DUBAI CREEK**  
HARBOUR

**SUNSET AT  
CREEK BEACH**

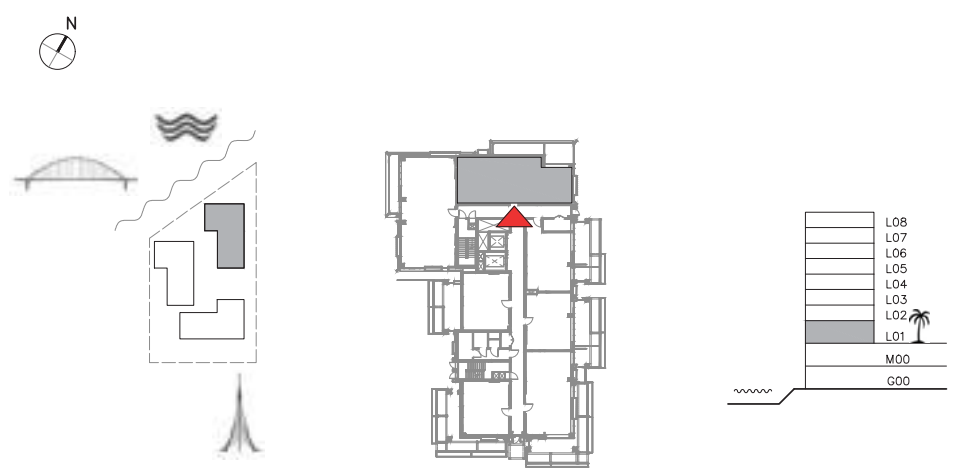
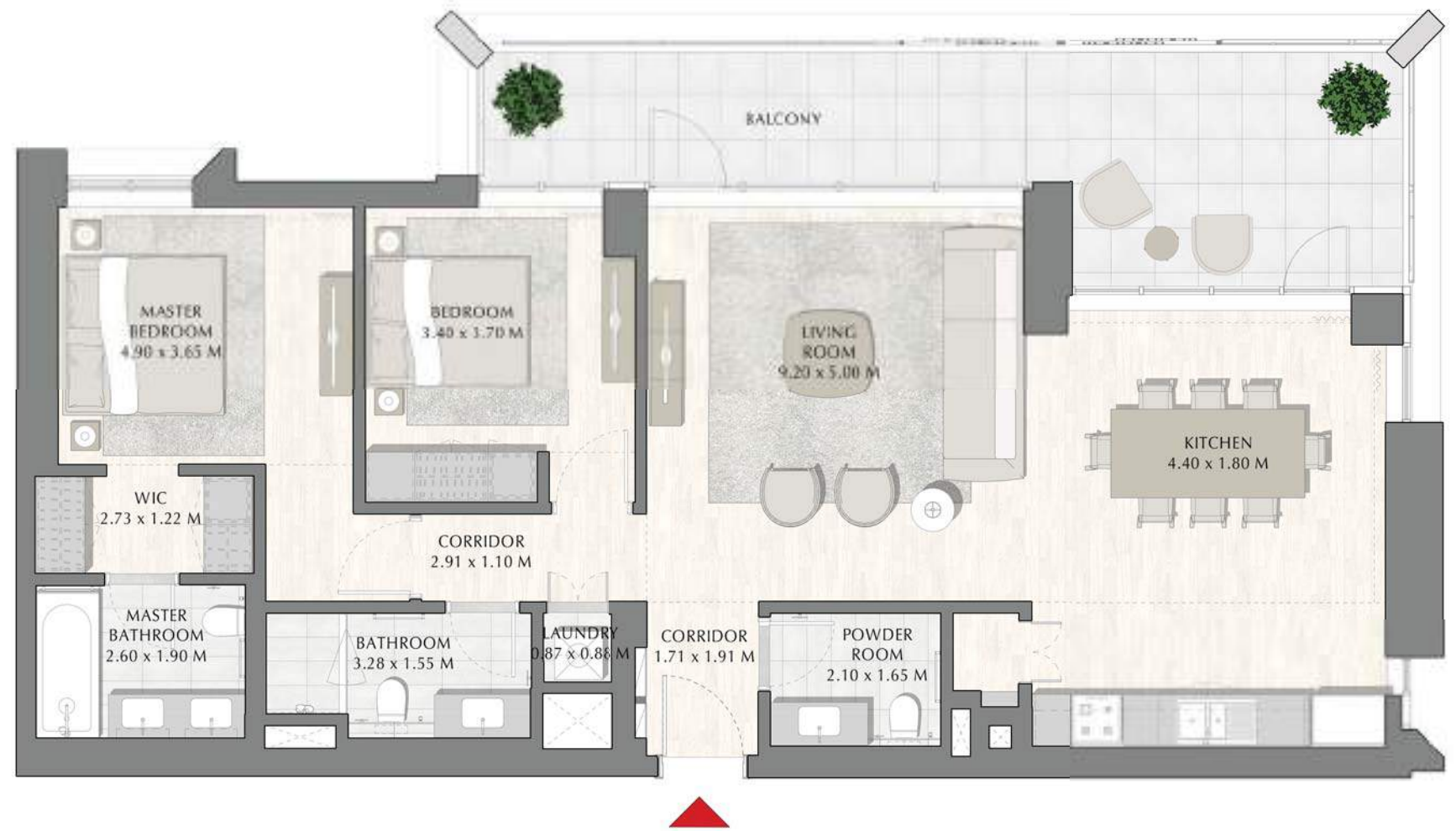
BUILDING 1

LEVEL 1

UNIT 106

**2 BEDROOM**

APARTMENT AREA	114.37 SQ.M.	1231.07 SQ.FT.
BALCONY AREA	26.50 SQ.M.	285.24 SQ.FT.
TOTAL AREA	140.87 SQ.M.	1516.31 SQ.FT.



FLOOR PLAN 1. All dimensions are in imperial and metric, and measured from finish to finish excluding construction tolerances. 2. All materials, dimensions, and drawings are approximate only. 3. Information is subject to change without notice, at developer's absolute discretion. 4. Actual area may vary from the stated area. 5. Drawings not to scale. 6. All images used are for illustrative purpose only and do not represent the actual size, features, specifications, fittings, and furnishings. 7. The developer reserves the right to make revisions / alterations, at its absolute discretion, without any liability whatsoever.

**EMAAR**



**DUBAI CREEK**  
HARBOUR

**SUNSET AT  
CREEK BEACH**

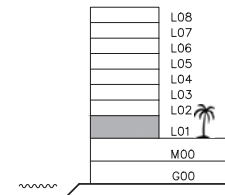
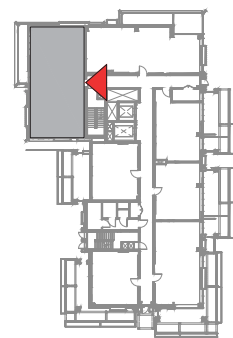
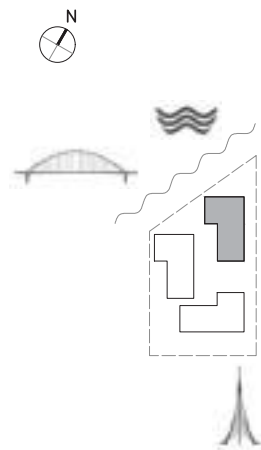
BUILDING 1

LEVEL 1

UNIT 107

**3 BEDROOM**

APARTMENT AREA	133.35 SQ.M.	1435.37 SQ.FT.
BALCONY AREA	31.81 SQ.M.	342.40 SQ.FT.
TOTAL AREA	165.16 SQ.M.	1777.77 SQ.FT.



FLOOR PLAN 1. All dimensions are in imperial and metric, and measured from finish to finish excluding construction tolerances. 2. All materials, dimensions, and drawings are approximate only. 3. Information is subject to change without notice, at developer's absolute discretion. 4. Actual area may vary from the stated area. 5. Drawings not to scale. 6. All images used are for illustrative purpose only and do not represent the actual size, features, specifications, fittings, and furnishings. 7. The developer reserves the right to make revisions / alterations, at its absolute discretion, without any liability whatsoever.

**EMAAR**



**DUBAI CREEK**  
HARBOUR

**SUNSET AT  
CREEK BEACH**

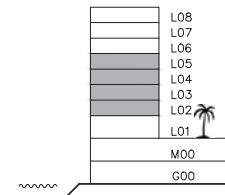
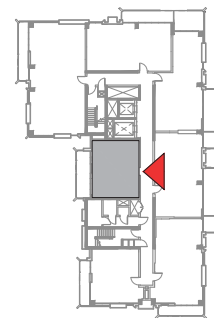
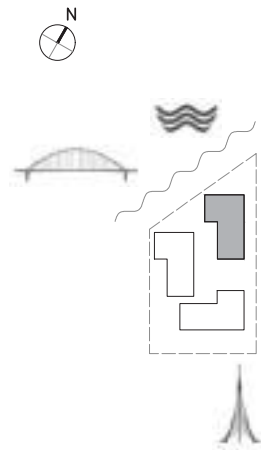
BUILDING 1

LEVEL 2, 3, 4, 5

UNIT 201, 301, 401, 501

**1 BEDROOM**

APARTMENT AREA	59.87 SQ.M.	644.44 SQ.FT.
BALCONY AREA	14.75 SQ.M.	158.77 SQ.FT.
TOTAL AREA	74.62 SQ.M.	803.21 SQ.FT.



FLOOR PLAN 1. All dimensions are in imperial and metric, and measured from finish to finish excluding construction tolerances. 2.All materials, dimensions, and drawings are approximate only. 3. Information is subject to change without notice, at developer's absolute discretion. 4. Actual area may vary from the stated area. 5. Drawings not to scale. 6. All images used are for illustrative purpose only and do not represent the actual size, features, specifications, fittings, and finishings. 7. The developer reserves the right to make revisions / alterations, at it's a absolute discretion, without any liability whatsoever.

**EMAAR**

**DUBAI CREEK**  
HARBOUR

**SUNSET AT  
CREEK BEACH**

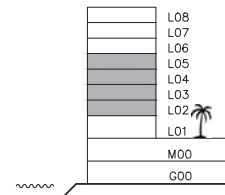
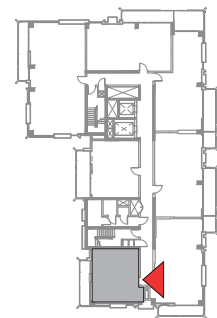
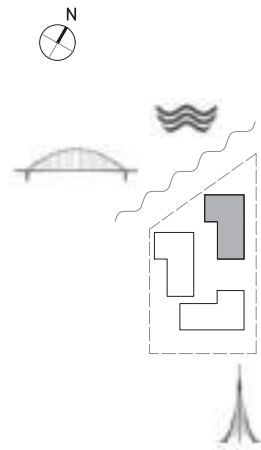
BUILDING 1

LEVEL 2, 3, 4, 5

UNIT 202, 302, 402, 502

**1 BEDROOM**

APARTMENT AREA	59.94 SQ.M.	645.19 SQ.FT.
BALCONY AREA	10.84 SQ.M.	116.68 SQ.FT.
TOTAL AREA	70.78 SQ.M.	761.87 SQ.FT.



FLOOR PLAN 1. All dimensions are in imperial and metric, and measured from finish to finish excluding construction tolerances. 2.All materials, dimensions, and drawings are approximate only. 3. Information is subject to change without notice, at developer's absolute discretion. 4. Actual area may vary from the stated area. 5. Drawings not to scale. 6. All images used are for illustrative purpose only and do not represent the actual size, features, specifications, fittings, and furnishings. 7. The developer reserves the right to make revisions / alterations, at it's a absolute discretion, without any liability whatsoever.

**EMAAR**

**DUBAI CREEK**  
HARBOUR

**SUNSET AT  
CREEK BEACH**

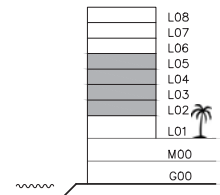
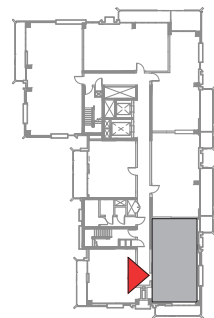
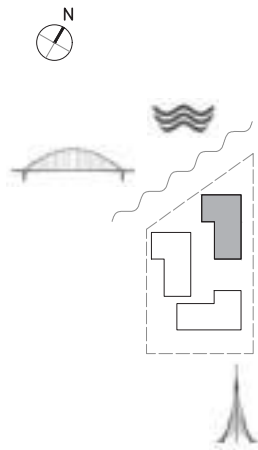
BUILDING 1

LEVEL 2, 3, 4, 5

UNIT 203, 303, 403, 503

**2 BEDROOM**

APARTMENT AREA	90.60 SQ.M.	975.21 SQ.FT.
BALCONY AREA	14.85 SQ.M.	159.84 SQ.FT.
TOTAL AREA	105.45 SQ.M.	1135.05 SQ.FT.



FLOOR PLAN 1. All dimensions are in imperial and metric, and measured from finish to finish excluding construction tolerances. 2.All materials, dimensions, and drawings are approximate only. 3. Information is subject to change without notice, at developer's absolute discretion. 4. Actual area may vary from the stated area. 5. Drawings not to scale. 6. All images used are for illustrative purpose only and do not represent the actual size, features, specifications, fittings, and furnishings. 7. The developer reserves the right to make revisions / alterations, at it's a absolute discretion, without any liability whatsoever.

**EMAAR**



**DUBAI CREEK**  
HARBOUR

**SUNSET AT  
CREEK BEACH**

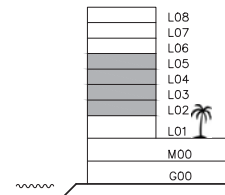
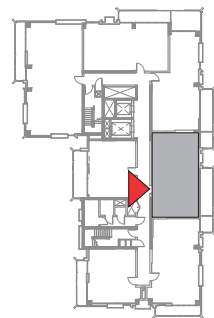
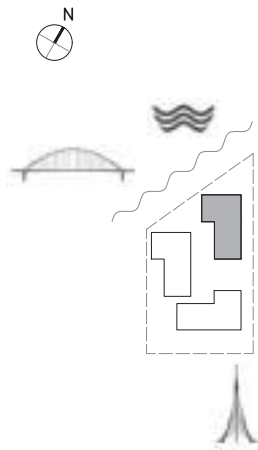
BUILDING 1

LEVEL 2, 3, 4, 5

UNIT 204, 304, 404, 504

**2 BEDROOM**

APARTMENT AREA	87.66 SQ.M.	943.56 SQ.FT.
BALCONY AREA	18.10 SQ.M.	194.83 SQ.FT.
TOTAL AREA	105.76 SQ.M.	1138.39 SQ.FT.



FLOOR PLAN 1. All dimensions are in imperial and metric, and measured from finish to finish excluding construction tolerances. 2.All materials, dimensions, and drawings are approximate only. 3. Information is subject to change without notice, at developer's absolute discretion. 4. Actual area may vary from the stated area. 5. Drawings not to scale. 6. All images used are for illustrative purpose only and do not represent the actual size, features, specifications, fittings, and furnishings. 7. The developer reserves the right to make revisions / alterations, at its absolute discretion, without any liability whatsoever.

**DUBAI CREEK**  
HARBOUR

**SUNSET AT  
CREEK BEACH**

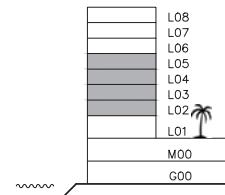
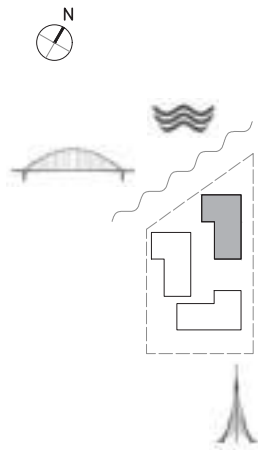
BUILDING 1

LEVEL 2, 3, 4, 5

UNIT 205, 305, 405, 505

**2 BEDROOM**

APARTMENT AREA	86.80 SQ.M.	934.31 SQ.FT.
BALCONY AREA	25.43 SQ.M.	273.73 SQ.FT.
TOTAL AREA	112.23 SQ.M.	1208.04 SQ.FT.



FLOOR PLAN 1. All dimensions are in imperial and metric, and measured from finish to finish excluding construction tolerances. 2. All materials, dimensions, and drawings are approximate only. 3. Information is subject to change without notice, at developer's absolute discretion. 4. Actual area may vary from the stated area. 5. Drawings not to scale. 6. All images used are for illustrative purpose only and do not represent the actual size, features, specifications, fittings, and furnishings. 7. The developer reserves the right to make revisions / alterations, at its absolute discretion, without any liability whatsoever.

**EMAAR**

**DUBAI CREEK**  
HARBOUR

**SUNSET AT  
CREEK BEACH**

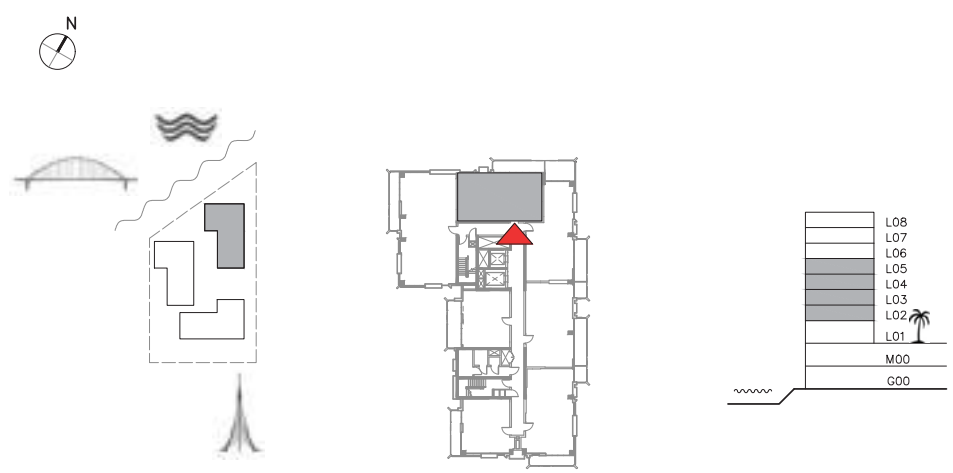
BUILDING 1

LEVEL 2, 3, 4, 5

UNIT 206, 306, 406, 506

**2 BEDROOM**

APARTMENT AREA	88.00 SQ.M.	947.22 SQ.FT.
BALCONY AREA	13.35 SQ.M.	143.70 SQ.FT.
TOTAL AREA	101.35 SQ.M.	1090.92 SQ.FT.



FLOOR PLAN 1. All dimensions are in imperial and metric, and measured from finish to finish excluding construction tolerances. 2. All materials, dimensions, and drawings are approximate only. 3. Information is subject to change without notice, at developer's absolute discretion. 4. Actual area may vary from the stated area. 5. Drawings not to scale. 6. All images used are for illustrative purpose only and do not represent the actual size, features, specifications, fittings, and furnishings. 7. The developer reserves the right to make revisions / alterations, at its absolute discretion, without any liability whatsoever.



**DUBAI CREEK**  
HARBOUR

**SUNSET AT  
CREEK BEACH**

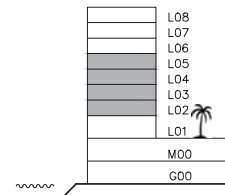
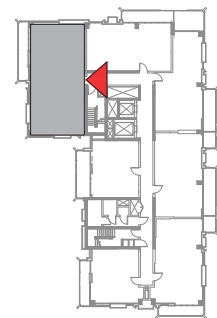
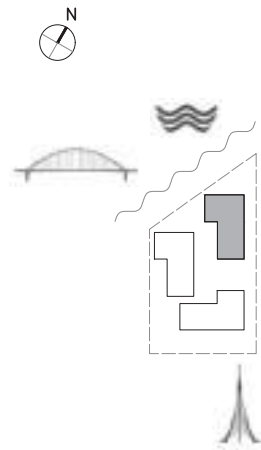
BUILDING 1

LEVEL 2, 3, 4, 5

UNIT 207, 307, 407, 507

**3 BEDROOM**

APARTMENT AREA	132.87 SQ.M.	1430.20 SQ.FT.
BALCONY AREA	14.82 SQ.M.	159.52 SQ.FT.
TOTAL AREA	147.69 SQ.M.	1589.72 SQ.FT.



FLOOR PLAN 1. All dimensions are in imperial and metric, and measured from finish to finish excluding construction tolerances. 2.All materials, dimensions, and drawings are approximate only. 3. Information is subject to change without notice, at developer's absolute discretion. 4. Actual area may vary from the stated area. 5. Drawings not to scale. 6. All images used are for illustrative purpose only and do not represent the actual size, features, specifications, fittings, and furnishings. 7. The developer reserves the right to make revisions / alterations, at its absolute discretion, without any liability whatsoever.

**DUBAI CREEK**  
HARBOUR

**SUNSET AT  
CREEK BEACH**

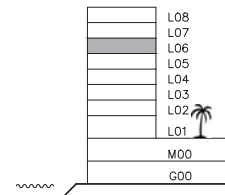
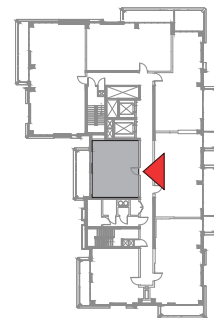
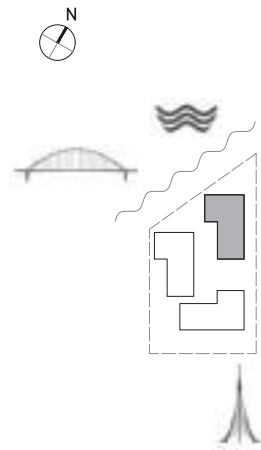
BUILDING 1

LEVEL 6

UNIT 601

**1 BEDROOM**

APARTMENT AREA	59.98 SQ.M.	645.62 SQ.FT.
BALCONY AREA	14.85 SQ.M.	159.84 SQ.FT.
TOTAL AREA	74.83 SQ.M.	805.46 SQ.FT.



FLOOR PLAN 1. All dimensions are in imperial and metric, and measured from finish to finish excluding construction tolerances. 2. All materials, dimensions, and drawings are approximate only. 3. Information is subject to change without notice, at developer's absolute discretion. 4. Actual area may vary from the stated area. 5. Drawings not to scale. 6. All images used are for illustrative purpose only and do not represent the actual size, features, specifications, fittings, and furnishings. 7. The developer reserves the right to make revisions / alterations, at its absolute discretion, without any liability whatsoever.

**EMAAR**

**DUBAI CREEK**  
HARBOUR

**SUNSET AT  
CREEK BEACH**

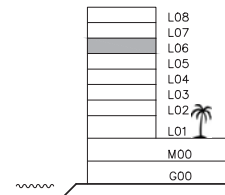
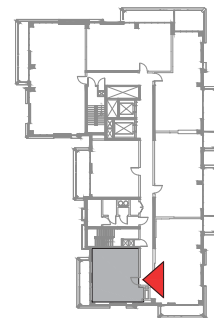
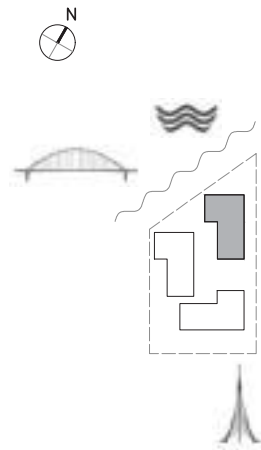
BUILDING 1

LEVEL 6

UNIT 602

**1 BEDROOM**

APARTMENT AREA	60.26 SQ.M.	648.63 SQ.FT.
BALCONY AREA	10.77 SQ.M.	115.93 SQ.FT.
TOTAL AREA	71.03 SQ.M.	764.56 SQ.FT.



FLOOR PLAN 1. All dimensions are in imperial and metric, and measured from finish to finish excluding construction tolerances. 2. All materials, dimensions, and drawings are approximate only. 3. Information is subject to change without notice, at developer's absolute discretion. 4. Actual area may vary from the stated area. 5. Drawings not to scale. 6. All images used are for illustrative purpose only and do not represent the actual size, features, specifications, fittings, and furnishings. 7. The developer reserves the right to make revisions / alterations, at its absolute discretion, without any liability whatsoever.

**EMAAR**



**DUBAI CREEK**  
HARBOUR

**SUNSET AT  
CREEK BEACH**

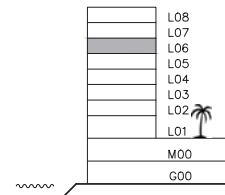
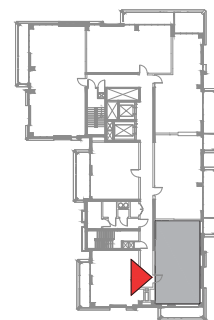
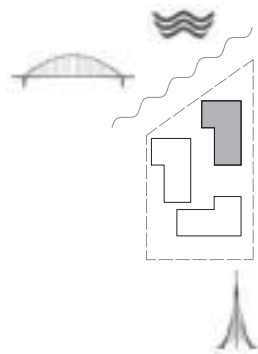
BUILDING 1

LEVEL 6

UNIT 603

**2 BEDROOM**

APARTMENT AREA	90.80 SQ.M.	977.36 SQ.FT.
BALCONY AREA	14.83 SQ.M.	159.63 SQ.FT.
TOTAL AREA	105.63 SQ.M.	1136.99 SQ.FT.



FLOOR PLAN 1. All dimensions are in imperial and metric, and measured from finish to finish excluding construction tolerances. 2. All materials, dimensions, and drawings are approximate only. 3. Information is subject to change without notice, at developer's absolute discretion. 4. Actual area may vary from the stated area. 5. Drawings not to scale. 6. All images used are for illustrative purpose only and do not represent the actual size, features, specifications, fittings, and furnishings. 7. The developer reserves the right to make revisions / alterations, at its absolute discretion, without any liability whatsoever.

**EMAAR**

**DUBAI CREEK**  
HARBOUR

**SUNSET AT**  
**CREEK BEACH**

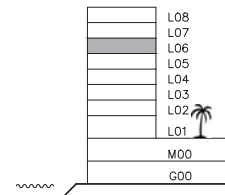
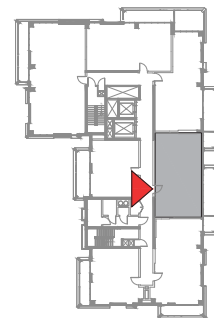
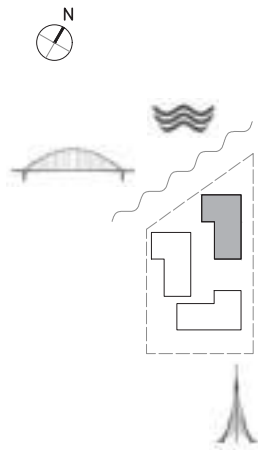
BUILDING 1

LEVEL 6

UNIT 604

**2 BEDROOM**

APARTMENT AREA	87.71 SQ.M.	944.10 SQ.FT.
BALCONY AREA	18.08 SQ.M.	194.61 SQ.FT.
TOTAL AREA	105.79 SQ.M.	1138.71 SQ.FT.



FLOOR PLAN 1. All dimensions are in imperial and metric, and measured from finish to finish excluding construction tolerances. 2. All materials, dimensions, and drawings are approximate only. 3. Information is subject to change without notice, at developer's absolute discretion. 4. Actual area may vary from the stated area. 5. Drawings not to scale. 6. All images used are for illustrative purpose only and do not represent the actual size, features, specifications, fittings, and furnishings. 7. The developer reserves the right to make revisions / alterations, at its absolute discretion, without any liability whatsoever.

**DUBAI CREEK**  
HARBOUR

**SUNSET AT  
CREEK BEACH**

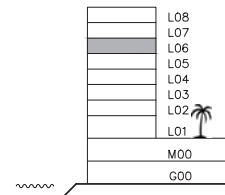
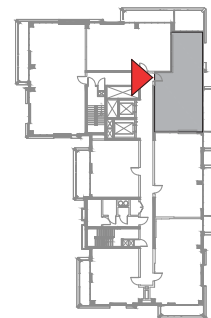
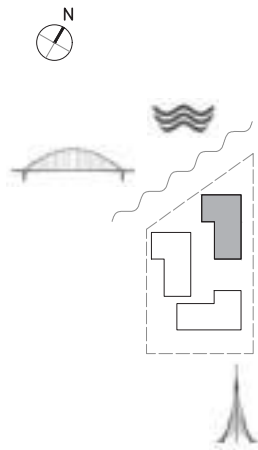
BUILDING 1

LEVEL 6

UNIT 605

**2 BEDROOM**

APARTMENT AREA	86.92 SQ.M.	935.60 SQ.FT.
BALCONY AREA	25.83 SQ.M.	278.03 SQ.FT.
TOTAL AREA	112.75 SQ.M.	1213.63 SQ.FT.



FLOOR PLAN 1. All dimensions are in imperial and metric, and measured from finish to finish excluding construction tolerances. 2. All materials, dimensions, and drawings are approximate only. 3. Information is subject to change without notice, at developer's absolute discretion. 4. Actual area may vary from the stated area. 5. Drawings not to scale. 6. All images used are for illustrative purpose only and do not represent the actual size, features, specifications, fittings, and furnishings. 7. The developer reserves the right to make revisions / alterations, at its absolute discretion, without any liability whatsoever.

**EMAAR**



**DUBAI CREEK**  
HARBOUR

**SUNSET AT  
CREEK BEACH**

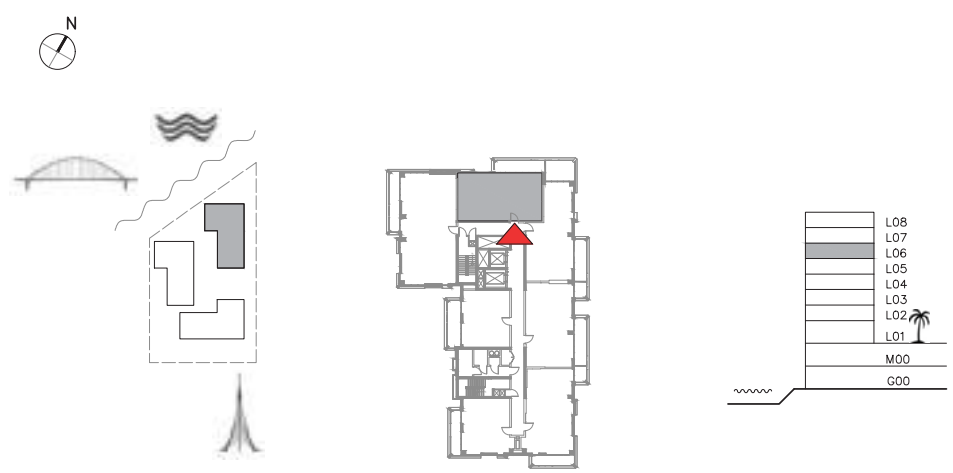
BUILDING 1

LEVEL 6

UNIT 606

**2 BEDROOM**

APARTMENT AREA	88.00 SQ.M.	947.22 SQ.FT.
BALCONY AREA	13.32 SQ.M.	143.38 SQ.FT.
TOTAL AREA	101.32 SQ.M.	1090.60 SQ.FT.



FLOOR PLAN 1. All dimensions are in imperial and metric, and measured from finish to finish excluding construction tolerances. 2. All materials, dimensions, and drawings are approximate only. 3. Information is subject to change without notice, at developer's absolute discretion. 4. Actual area may vary from the stated area. 5. Drawings not to scale. 6. All images used are for illustrative purpose only and do not represent the actual size, features, specifications, fittings, and furnishings. 7. The developer reserves the right to make revisions / alterations, at its absolute discretion, without any liability whatsoever.

**EMAAR**

**DUBAI CREEK**  
HARBOUR

**SUNSET AT  
CREEK BEACH**

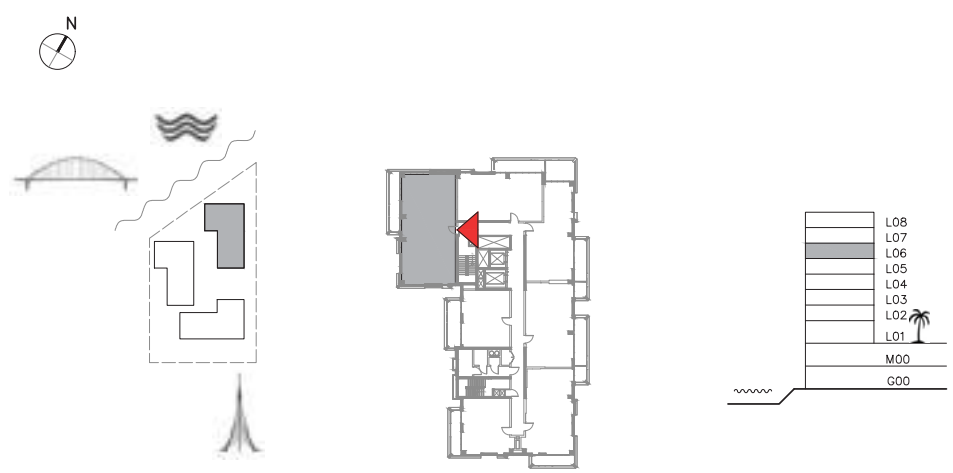
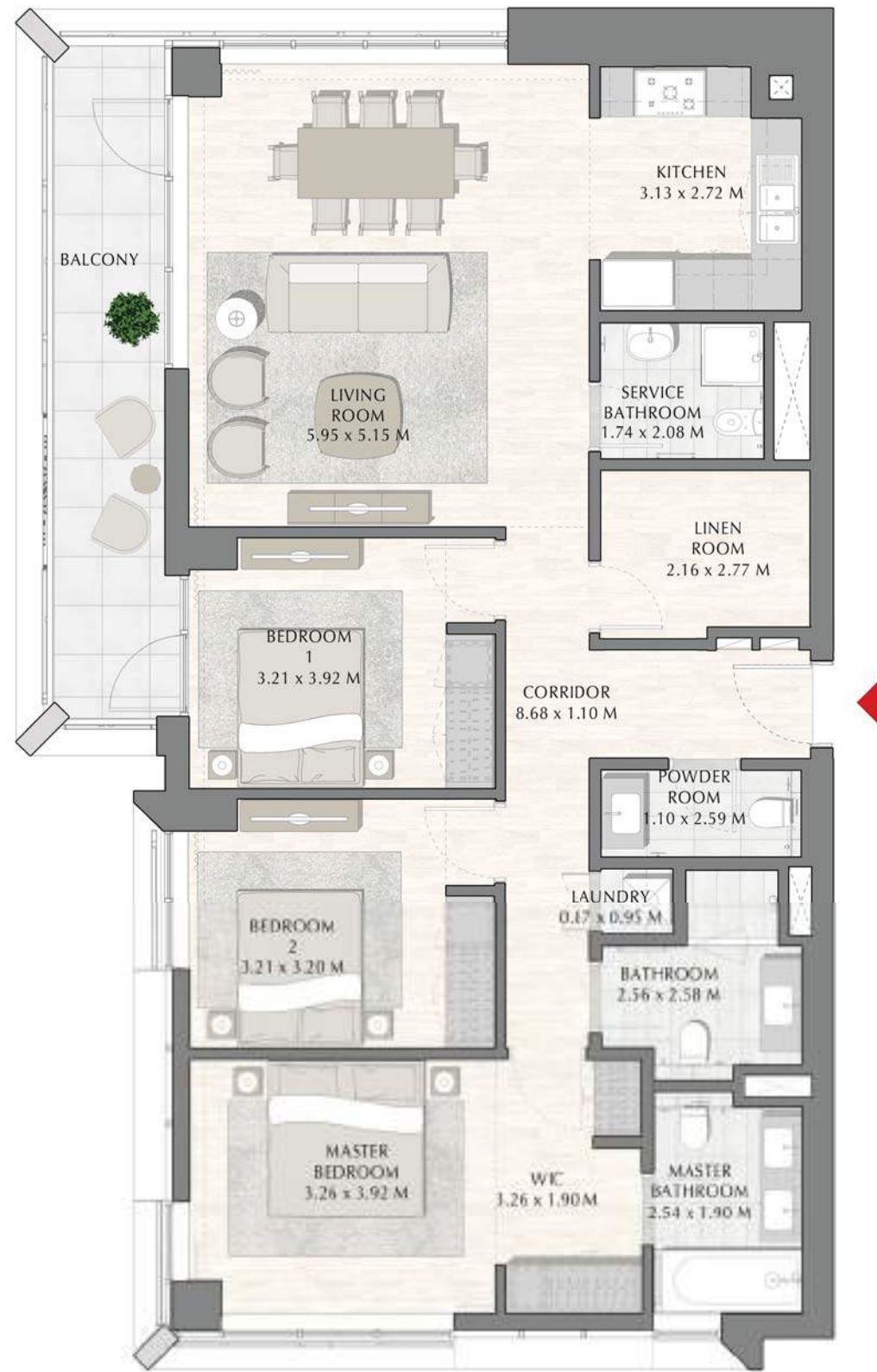
BUILDING 1

LEVEL 6

UNIT 607

**3 BEDROOM**

APARTMENT AREA	133.51 SQ.M.	1437.09 SQ.FT.
BALCONY AREA	14.43 SQ.M.	155.32 SQ.FT.
TOTAL AREA	147.94 SQ.M.	1592.41 SQ.FT.



FLOOR PLAN 1. All dimensions are in imperial and metric, and measured from finish to finish excluding construction tolerances. 2.All materials, dimensions, and drawings are approximate only. 3. Information is subject to change without notice, at developer's absolute discretion. 4. Actual area may vary from the stated area. 5. Drawings not to scale. 6. All images used are for illustrative purpose only and do not represent the actual size, features, specifications, fittings, and furnishings. 7. The developer reserves the right to make revisions / alterations, at its absolute discretion, without any liability whatsoever.

**DUBAI CREEK**  
HARBOUR

**SUNSET AT  
CREEK BEACH**

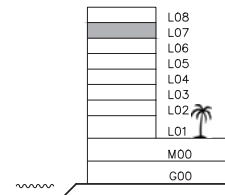
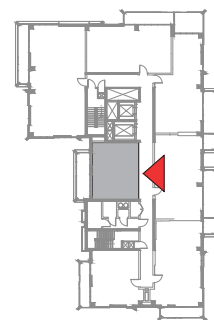
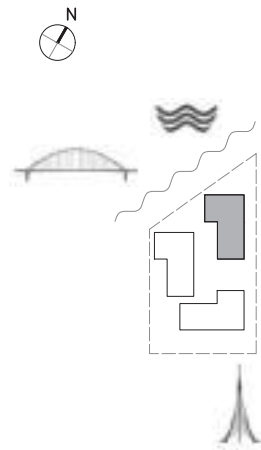
BUILDING 1

LEVEL 7

UNIT 701

**1 BEDROOM**

APARTMENT AREA	59.91 SQ.M.	644.87 SQ.FT.
BALCONY AREA	14.54 SQ.M.	156.51 SQ.FT.
TOTAL AREA	74.45 SQ.M.	801.38 SQ.FT.



FLOOR PLAN 1. All dimensions are in imperial and metric, and measured from finish to finish excluding construction tolerances. 2. All materials, dimensions, and drawings are approximate only. 3. Information is subject to change without notice, at developer's absolute discretion. 4. Actual area may vary from the stated area. 5. Drawings not to scale. 6. All images used are for illustrative purpose only and do not represent the actual size, features, specifications, fittings, and finishings. 7. The developer reserves the right to make revisions / alterations, at its absolute discretion, without any liability whatsoever.

**EMAAR**



**DUBAI CREEK**  
HARBOUR

**SUNSET AT  
CREEK BEACH**

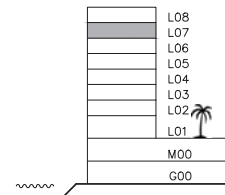
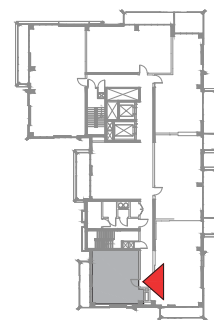
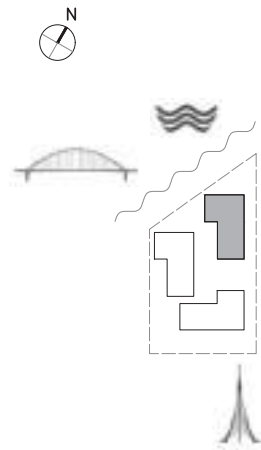
BUILDING 1

LEVEL 7

UNIT 702

**1 BEDROOM**

APARTMENT AREA	59.97 SQ.M.	645.51 SQ.FT.
BALCONY AREA	10.87 SQ.M.	117.00 SQ.FT.
TOTAL AREA	70.84 SQ.M.	762.51 SQ.FT.



FLOOR PLAN 1. All dimensions are in imperial and metric, and measured from finish to finish excluding construction tolerances. 2. All materials, dimensions, and drawings are approximate only. 3. Information is subject to change without notice, at developer's absolute discretion. 4. Actual area may vary from the stated area. 5. Drawings not to scale. 6. All images used are for illustrative purpose only and do not represent the actual size, features, specifications, fittings, and furnishings. 7. The developer reserves the right to make revisions / alterations, at its absolute discretion, without any liability whatsoever.

**EMAAR**

**DUBAI CREEK**  
HARBOUR

**SUNSET AT  
CREEK BEACH**

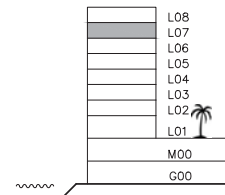
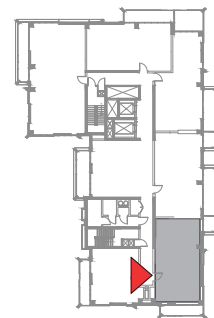
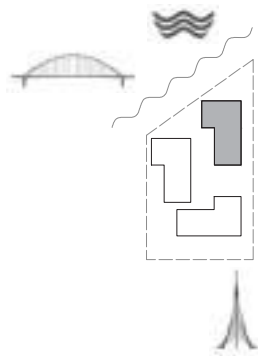
BUILDING 1

LEVEL 7

UNIT 703

**2 BEDROOM**

APARTMENT AREA	90.31 SQ.M.	972.09 SQ.FT.
BALCONY AREA	14.73 SQ.M.	158.55 SQ.FT.
TOTAL AREA	105.04 SQ.M.	1130.64 SQ.FT.



FLOOR PLAN 1. All dimensions are in imperial and metric, and measured from finish to finish excluding construction tolerances. 2.All materials, dimensions, and drawings are approximate only. 3. Information is subject to change without notice, at developer's absolute discretion. 4. Actual area may vary from the stated area. 5. Drawings not to scale. 6. All images used are for illustrative purpose only and do not represent the actual size, features, specifications, fittings, and furnishings. 7. The developer reserves the right to make revisions / alterations, at it's a absolute discretion, without any liability whatsoever.

**EMAAR**

**DUBAI CREEK**  
HARBOUR

**SUNSET AT**  
**CREEK BEACH**

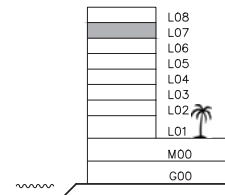
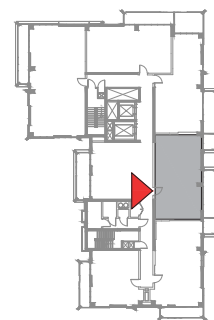
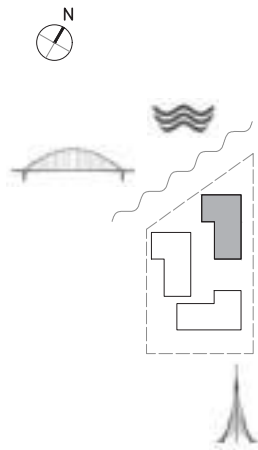
BUILDING 1

LEVEL 7

UNIT 704

**2 BEDROOM**

APARTMENT AREA	87.71 SQ.M.	944.10 SQ.FT.
BALCONY AREA	17.69 SQ.M.	190.41 SQ.FT.
TOTAL AREA	105.40 SQ.M.	1134.51 SQ.FT.



FLOOR PLAN 1. All dimensions are in imperial and metric, and measured from finish to finish excluding construction tolerances. 2. All materials, dimensions, and drawings are approximate only. 3. Information is subject to change without notice, at developer's absolute discretion. 4. Actual area may vary from the stated area. 5. Drawings not to scale. 6. All images used are for illustrative purpose only and do not represent the actual size, features, specifications, fittings, and furnishings. 7. The developer reserves the right to make revisions / alterations, at its absolute discretion, without any liability whatsoever.

**EMAAR**



**DUBAI CREEK**  
HARBOUR

**SUNSET AT  
CREEK BEACH**

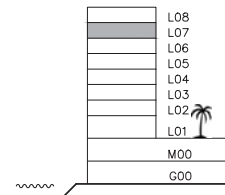
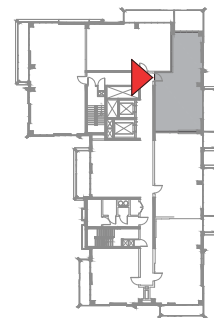
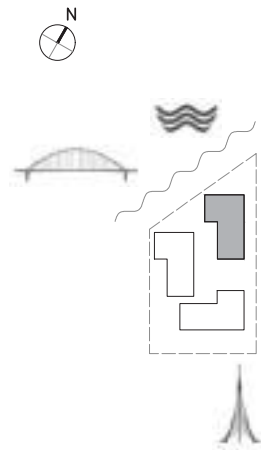
BUILDING 1

LEVEL 7

UNIT 705

**2 BEDROOM**

APARTMENT AREA	86.92 SQ.M.	935.60 SQ.FT.
BALCONY AREA	25.40 SQ.M.	273.40 SQ.FT.
TOTAL AREA	112.32 SQ.M.	1209.00 SQ.FT.



FLOOR PLAN 1. All dimensions are in imperial and metric, and measured from finish to finish excluding construction tolerances. 2. All materials, dimensions, and drawings are approximate only. 3. Information is subject to change without notice, at developer's absolute discretion. 4. Actual area may vary from the stated area. 5. Drawings not to scale. 6. All images used are for illustrative purpose only and do not represent the actual size, features, specifications, fittings, and furnishings. 7. The developer reserves the right to make revisions / alterations, at its absolute discretion, without any liability whatsoever.

**EMAAR**

**DUBAI CREEK**  
HARBOUR

**SUNSET AT  
CREEK BEACH**

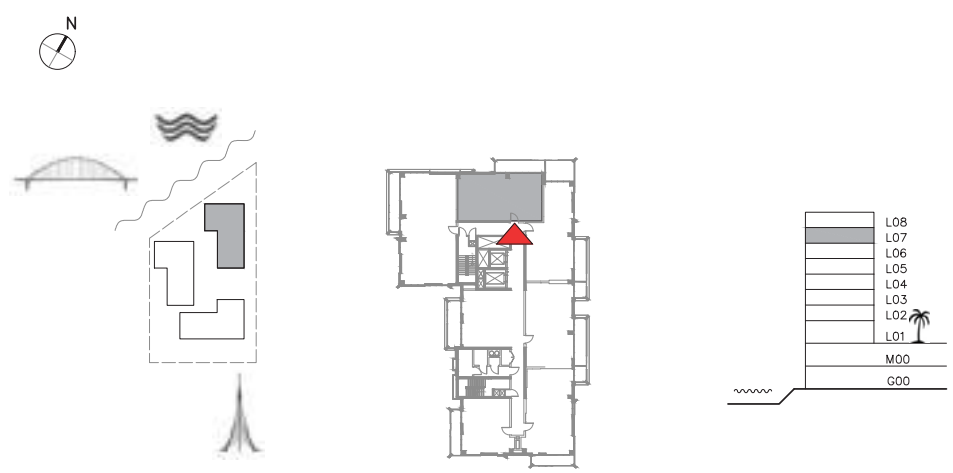
BUILDING 1

LEVEL 7

UNIT 706

**2 BEDROOM**

APARTMENT AREA	87.65 SQ.M.	943.46 SQ.FT.
BALCONY AREA	13.34 SQ.M.	143.59 SQ.FT.
TOTAL AREA	100.99 SQ.M.	1087.05 SQ.FT.



FLOOR PLAN 1. All dimensions are in imperial and metric, and measured from finish to finish excluding construction tolerances. 2. All materials, dimensions, and drawings are approximate only. 3. Information is subject to change without notice, at developer's absolute discretion. 4. Actual area may vary from the stated area. 5. Drawings not to scale. 6. All images used are for illustrative purpose only and do not represent the actual size, features, specifications, fittings, and furnishings. 7. The developer reserves the right to make revisions / alterations, at its absolute discretion, without any liability whatsoever.

**EMAAR**

**DUBAI CREEK**  
HARBOUR

**SUNSET AT  
CREEK BEACH**

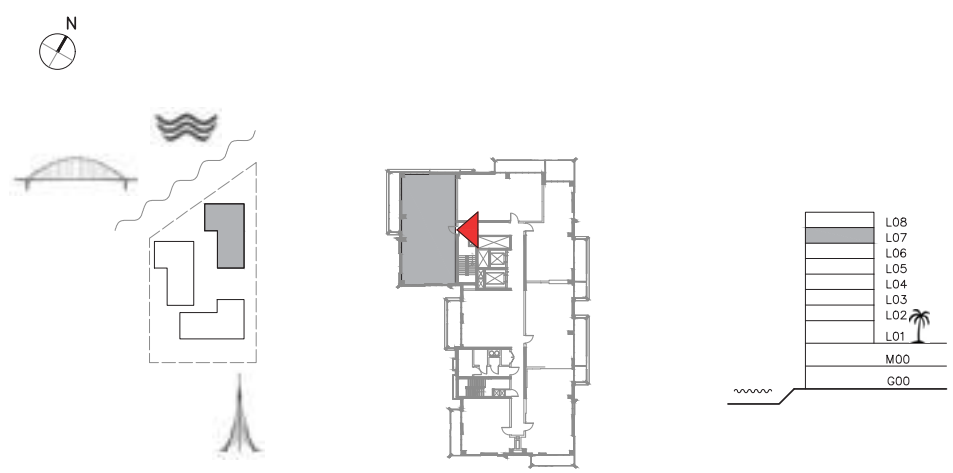
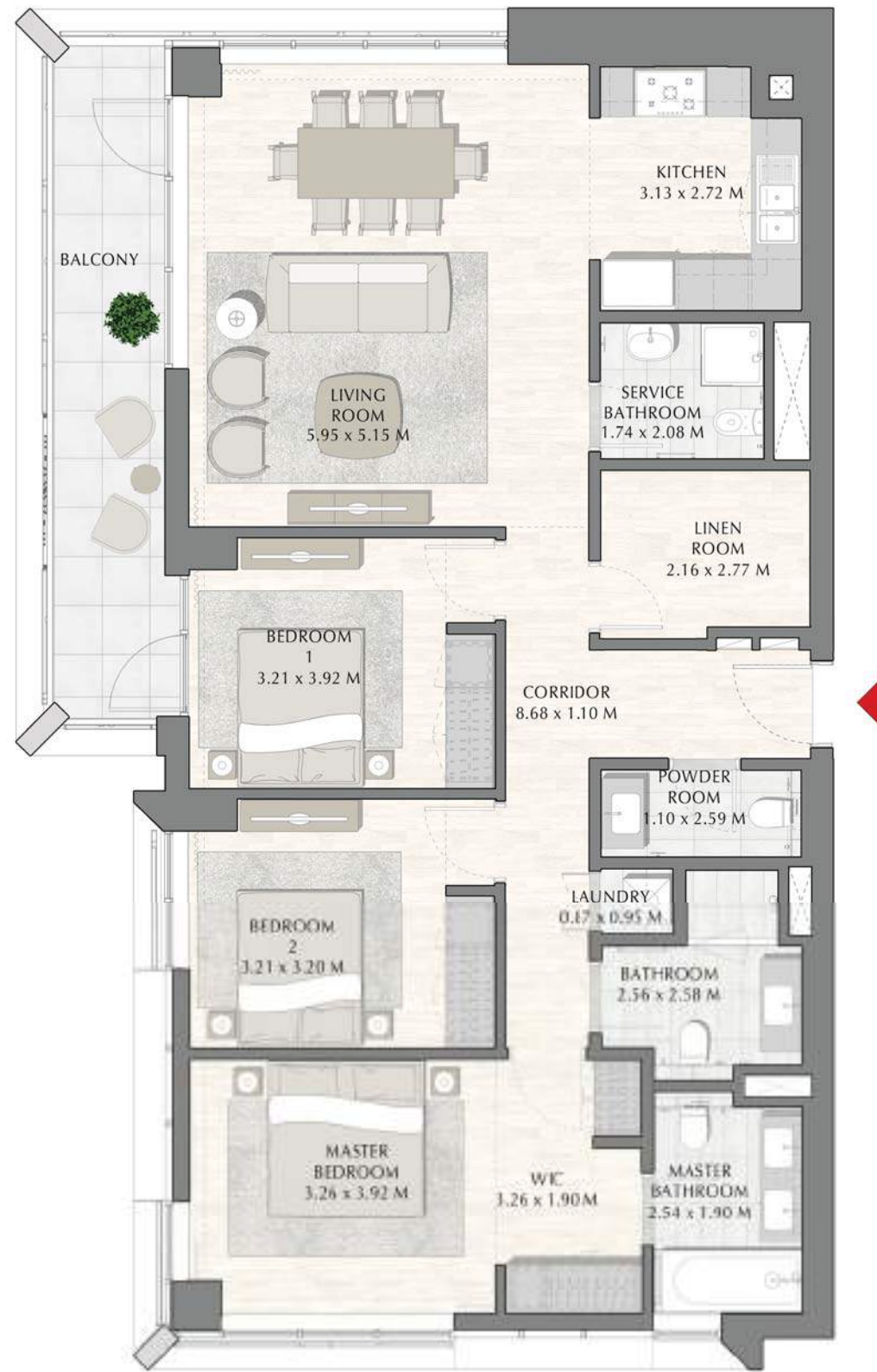
BUILDING 1

LEVEL 7

UNIT 707

**3 BEDROOM**

APARTMENT AREA	133.46 SQ.M.	1436.55 SQ.FT.
BALCONY AREA	14.61 SQ.M.	157.26 SQ.FT.
TOTAL AREA	148.07 SQ.M.	1593.81 SQ.FT.



FLOOR PLAN 1. All dimensions are in imperial and metric, and measured from finish to finish excluding construction tolerances. 2. All materials, dimensions, and drawings are approximate only. 3. Information is subject to change without notice, at developer's absolute discretion. 4. Actual area may vary from the stated area. 5. Drawings not to scale. 6. All images used are for illustrative purpose only and do not represent the actual size, features, specifications, fittings, and furnishings. 7. The developer reserves the right to make revisions / alterations, at its absolute discretion, without any liability whatsoever.



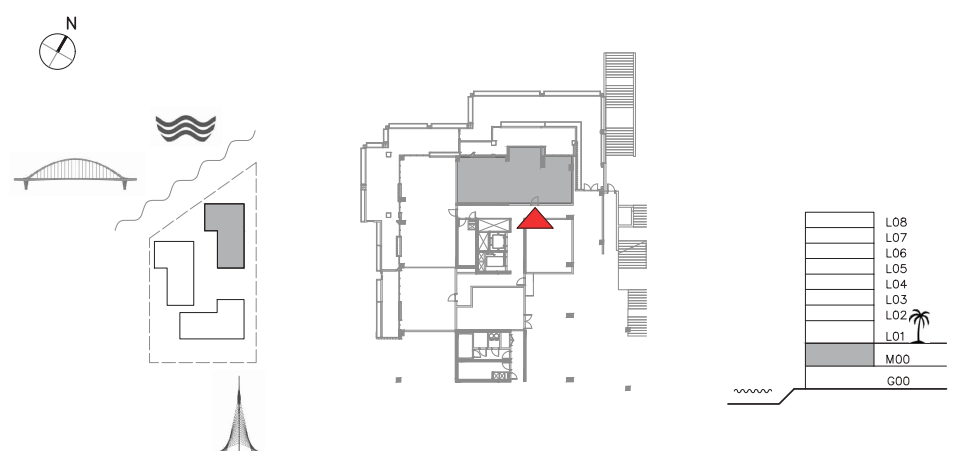
DUBAI CREEK  
HARBOUR

SUNSET AT  
CREEK BEACH

BUILDING 1  
MEZZANINE LEVEL  
UNIT M01

3 BEDROOM

APARTMENT AREA	123.92 SQ.M.	1333.86 SQ.FT.
BALCONY AREA	53.28 SQ.M.	573.50 SQ.FT.
TOTAL AREA	177.20 SQ.M.	1907.36 SQ.FT.



FLOOR PLAN 1. All dimensions are in imperial and metric, and measured from finish to finish excluding construction tolerances. 2. All materials, dimensions, and drawings are approximate only. 3. Information is subject to change without notice, at developer's absolute discretion. 4. Actual area may vary from the stated area. 5. Drawings not to scale. 6. All images used are for illustrative purpose only and do not represent the actual size, features, specifications, fittings, and finishings. 7. The developer reserves the right to make revisions / alterations, at its absolute discretion, without any liability whatsoever.

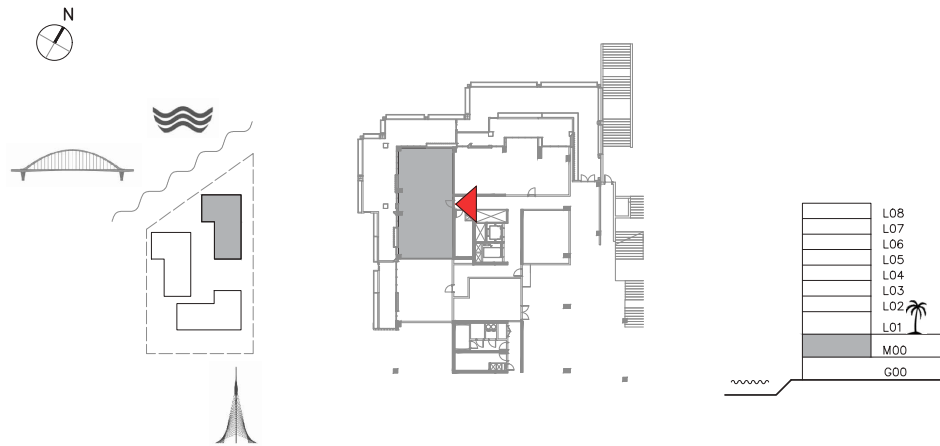
DUBAI CREEK  
HARBOUR

SUNSET AT  
CREEK BEACH

BUILDING 1  
MEZZANINE LEVEL  
UNIT M02

3 BEDROOM

APARTMENT AREA	132.79 SQ.M.	1429.34 SQ.FT.
BALCONY AREA	109.73 SQ.M.	1181.12 SQ.FT.
TOTAL AREA	242.52 SQ.M.	2610.46 SQ.FT.



FLOOR PLAN 1. All dimensions are in imperial and metric, and measured from finish to finish excluding construction tolerances. 2. All materials, dimensions, and drawings are approximate only. 3. Information is subject to change without notice, at developer's absolute discretion. 4. Actual area may vary from the stated area. 5. Drawings not to scale. 6. All images used are for illustrative purpose only and do not represent the actual size, features, specifications, fittings, and finishings. 7. The developer reserves the right to make revisions / alterations, at its absolute discretion, without any liability whatsoever.

EMAAR

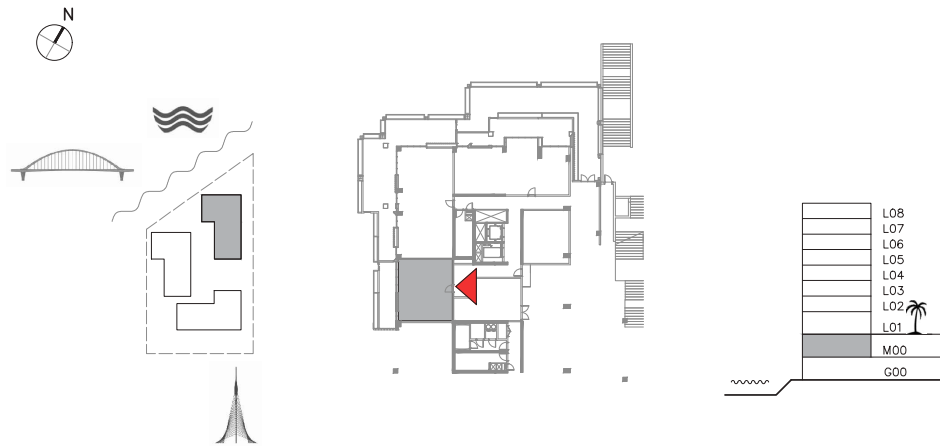
DUBAI CREEK  
HARBOUR

SUNSET AT  
CREEK BEACH

BUILDING 1  
MEZZANINE LEVEL  
UNIT M03

1 BEDROOM

APARTMENT AREA	73.14 SQ.M.	787.27 SQ.FT.
BALCONY AREA	25.45 SQ.M.	273.94 SQ.FT.
TOTAL AREA	98.59 SQ.M.	1061.21 SQ.FT.



FLOOR PLAN 1. All dimensions are in imperial and metric, and measured from finish to finish excluding construction tolerances. 2. All materials, dimensions, and drawings are approximate only. 3. Information is subject to change without notice, at developer's absolute discretion. 4. Actual area may vary from the stated area. 5. Drawings not to scale. 6. All images used are for illustrative purpose only and do not represent the actual size, features, specifications, fittings, and furnishings. 7. The developer reserves the right to make revisions / alterations, at its absolute discretion, without any liability whatsoever.

EMAAR