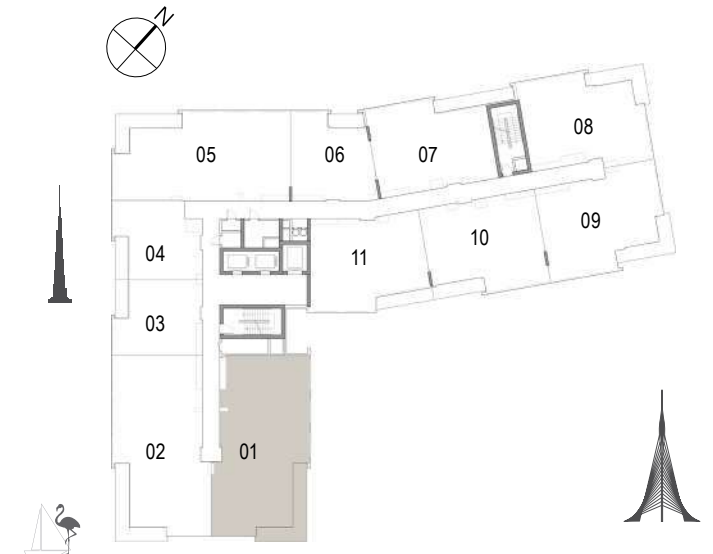


FLOOR PLANS

BUILDING 2

DUBAI CREEK
HARBOUR
THE COVE

Building 02
3 BEDROOM
UNIT 01/ LEVELS 02-06

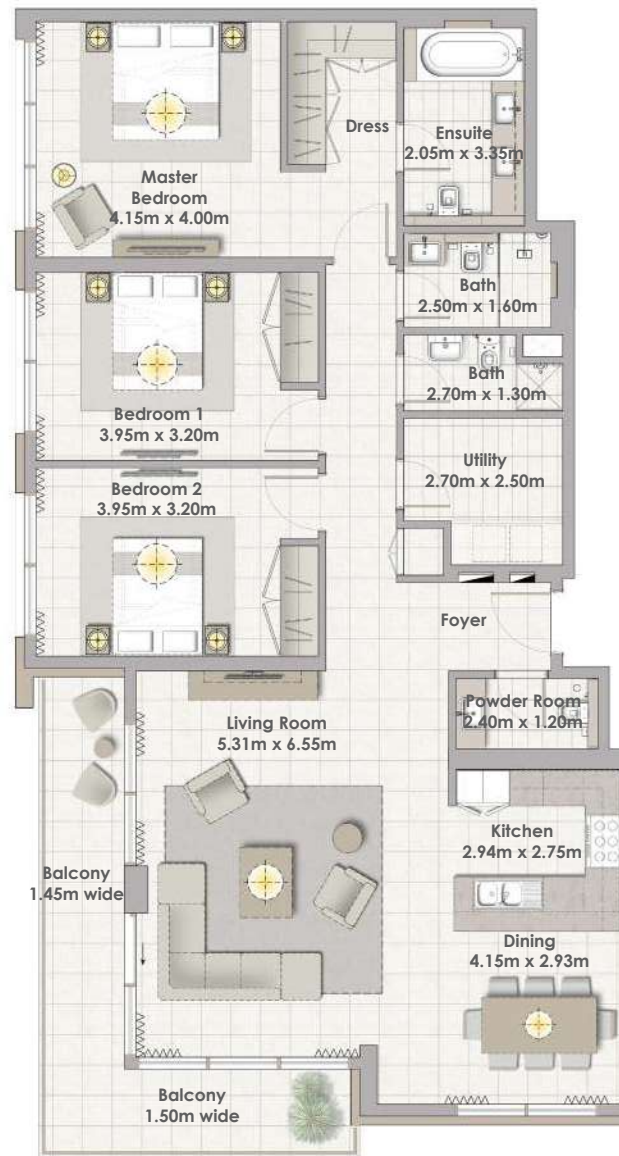


| | |
|--------------|-----------------------------|
| Suite Area | 157.80 Sqm. / 1698.55 Sqft. |
| Balcony Area | 18.31 Sqm. / 197.09 Sqft. |
| Total Area | 176.11 Sqm. / 1895.63 Sqft. |



1. All dimensions are in imperial and metric, and measured to structural elements and exclude wall finishes and construction tolerances. 2. All materials, dimensions, and drawings are approximate only. 3. Information is subject to change without notice, at developer's absolute discretion. 4. Actual area may vary from the stated area. 5. Drawings not to scale. 6. All images used are for illustrative purposes only and do not represent the actual size, features, specifications, fittings, and furnishings. 7. The developer reserves the right to make revisions/alterations, at its absolute discretion, without any liability whatsoever.

Building 02
3 BEDROOM
UNIT 02/ LEVELS 02-06

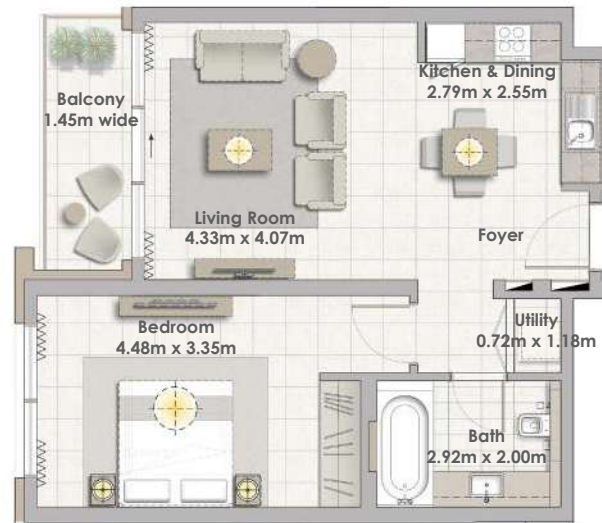


| | |
|--------------|-----------------------------|
| Suite Area | 157.80 Sqm. / 1698.55 Sqft. |
| Balcony Area | 18.31 Sqm. / 197.09 Sqft. |
| Total Area | 176.11 Sqm. / 1895.63 Sqft. |

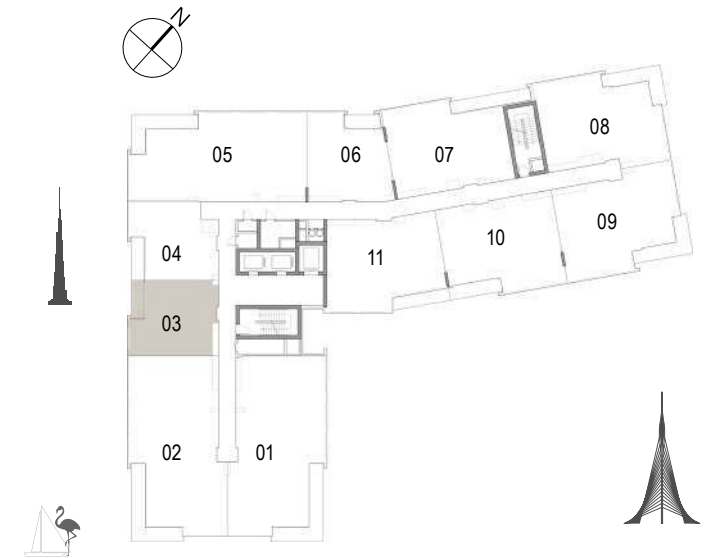
1. All dimensions are in imperial and metric, and measured to structural elements and exclude wall finishes and construction tolerances. 2. All materials, dimensions, and drawings are approximate only. 3. Information is subject to change without notice, at developer's absolute discretion. 4. Actual area may vary from the stated area. 5. Drawings not to scale. 6. All images used are for illustrative purposes only and do not represent the actual size, features, specifications, fittings, and furnishings. 7. The developer reserves the right to make revisions/alterations, at its absolute discretion, without any liability whatsoever.

DUBAI CREEK
HARBOUR
THE COVE

Building 02
1 BEDROOM
UNIT 03/ LEVELS 01-06

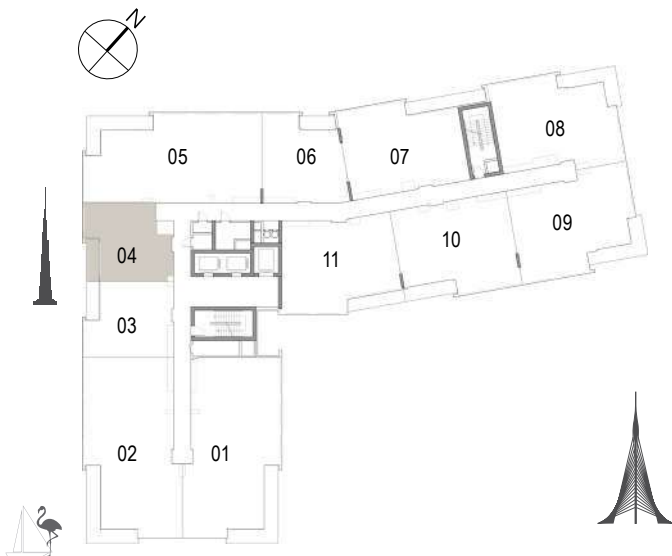


| | |
|--------------|---------------------------|
| Suite Area | 62.16 Sqm. / 669.08 Sqft. |
| Balcony Area | 6.38 Sqm. / 68.67 Sqft. |
| Total Area | 68.54 Sqm. / 737.76 Sqft. |



1. All dimensions are in imperial and metric, and measured to structural elements and exclude wall finishes and construction tolerances. 2. All materials, dimensions, and drawings are approximate only. 3. Information is subject to change without notice, at developer's absolute discretion. 4. Actual area may vary from the stated area. 5. Drawings not to scale. 6. All images used are for illustrative purposes only and do not represent the actual size, features, specifications, fittings, and furnishings. 7. The developer reserves the right to make revisions/alterations, at its absolute discretion, without any liability whatsoever.

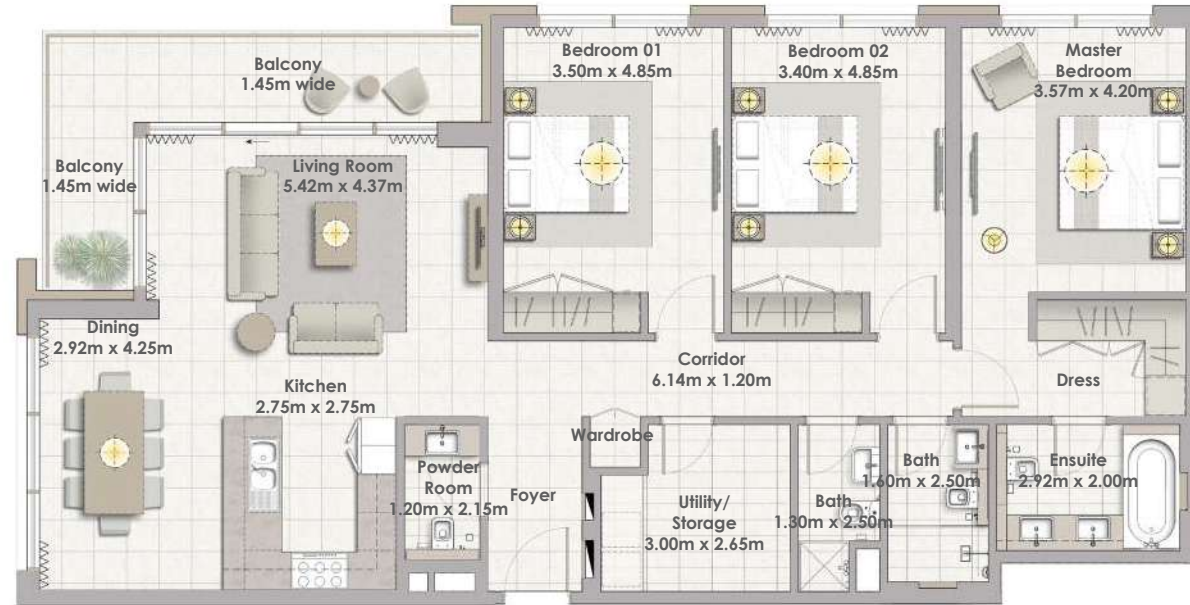
Building 02
1 BEDROOM
UNIT 04/ LEVELS 01-06



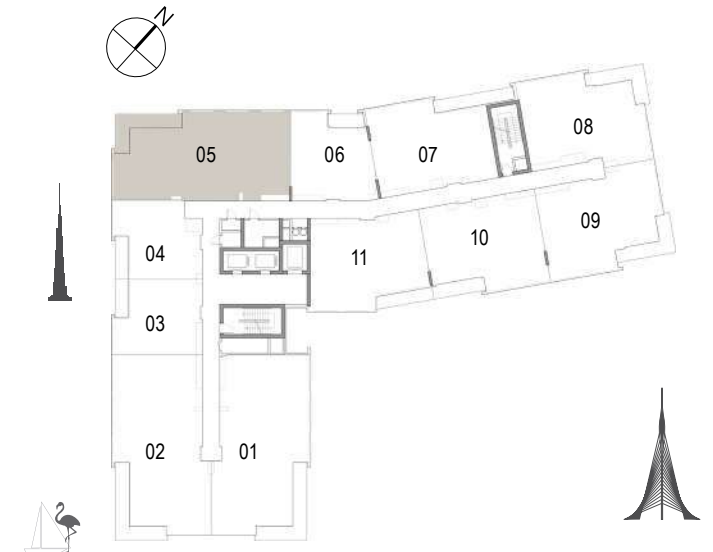
| | |
|--------------|---------------------------|
| Suite Area | 60.44 Sqm. / 650.57 Sqft. |
| Balcony Area | 7.02 Sqm. / 75.56 Sqft. |
| Total Area | 67.46 Sqm. / 726.13 Sqft. |

1. All dimensions are in imperial and metric, and measured to structural elements and exclude wall finishes and construction tolerances. 2. All materials, dimensions, and drawings are approximate only. 3. Information is subject to change without notice, at developer's absolute discretion. 4. Actual area may vary from the stated area. 5. Drawings not to scale. 6. All images used are for illustrative purposes only and do not represent the actual size, features, specifications, fittings, and furnishings. 7. The developer reserves the right to make revisions/alterations, at its absolute discretion, without any liability whatsoever.

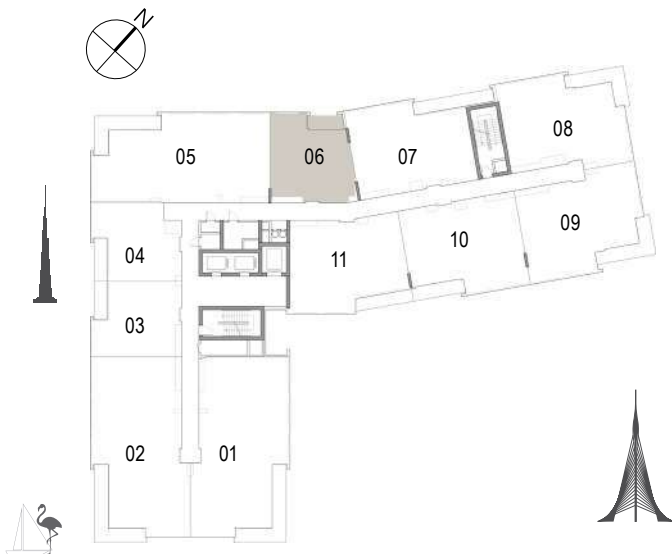
Building 02
3 BEDROOM
UNIT 05/ LEVELS 01-06



| | |
|--------------|-----------------------------|
| Suite Area | 148.24 Sqm. / 1595.64 Sqft. |
| Balcony Area | 14.78 Sqm. / 159.09 Sqft. |
| Total Area | 163.02 Sqm. / 1754.73 Sqft. |



Building 02
1 BEDROOM
UNIT 06/ LEVELS 01-06

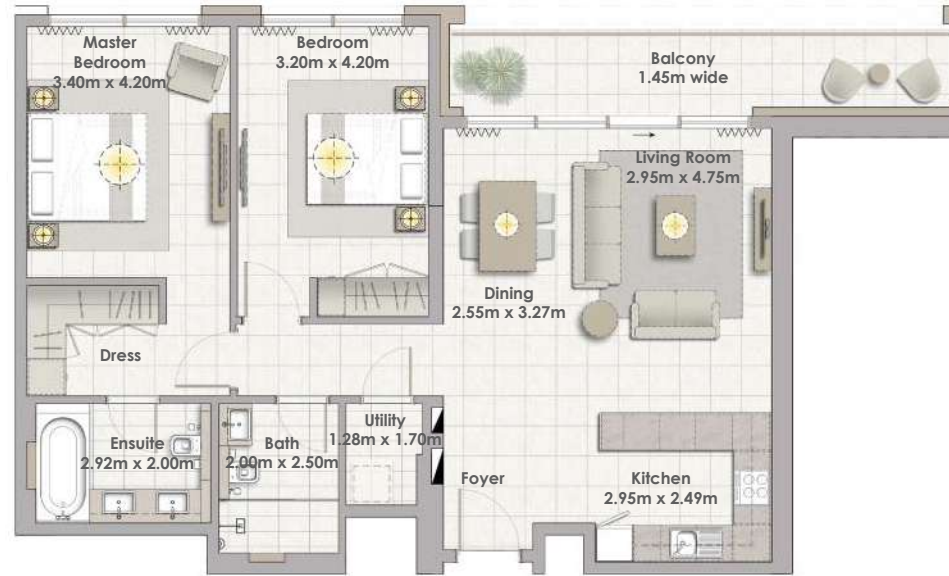


| | |
|--------------|---------------------------|
| Suite Area | 67.15 Sqm. / 722.80 Sqft. |
| Balcony Area | 6.45 Sqm. / 69.43 Sqft. |
| Total Area | 73.60 Sqm. / 792.22 Sqft. |

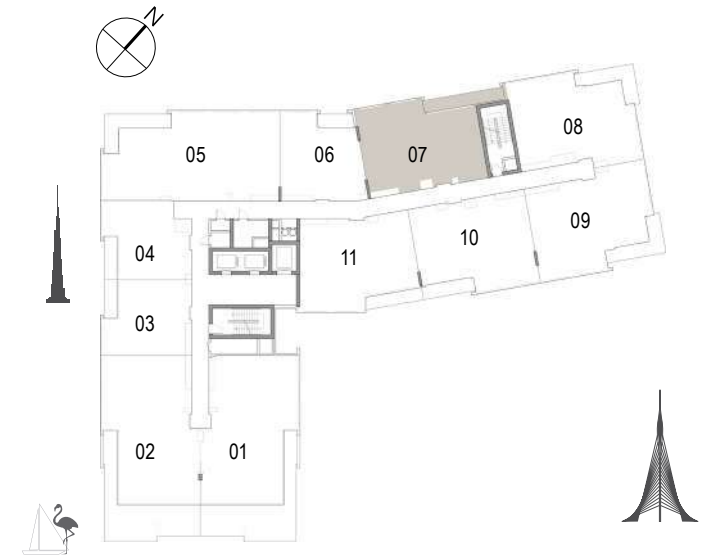
1. All dimensions are in imperial and metric, and measured to structural elements and exclude wall finishes and construction tolerances. 2. All materials, dimensions, and drawings are approximate only. 3. Information is subject to change without notice, at developer's absolute discretion. 4. Actual area may vary from the stated area. 5. Drawings not to scale. 6. All images used are for illustrative purposes only and do not represent the actual size, features, specifications, fittings, and furnishings. 7. The developer reserves the right to make revisions/alterations, at its absolute discretion, without any liability whatsoever.

DUBAI CREEK
HARBOUR
THE COVE

Building 02
2 BEDROOM
UNIT 07/ LEVELS 01-06



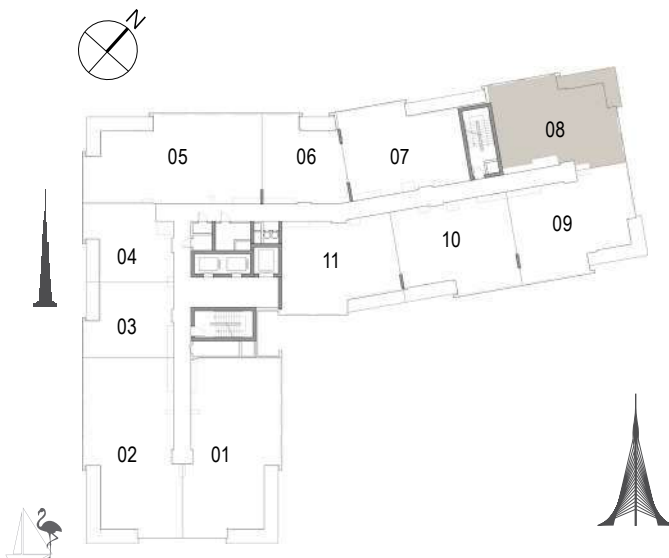
| | |
|--------------|-----------------------------|
| Suite Area | 102.58 Sqm. / 1104.16 Sqft. |
| Balcony Area | 13.60 Sqm. / 146.39 Sqft. |
| Total Area | 116.18 Sqm. / 1250.55 Sqft. |



1. All dimensions are in imperial and metric, and measured to structural elements and exclude wall finishes and construction tolerances. 2. All materials, dimensions, and drawings are approximate only. 3. Information is subject to change without notice, at developer's absolute discretion. 4. Actual area may vary from the stated area. 5. Drawings not to scale. 6. All images used are for illustrative purposes only and do not represent the actual size, features, specifications, fittings, and furnishings. 7. The developer reserves the right to make revisions/alterations, at its absolute discretion, without any liability whatsoever.

DUBAI CREEK
HARBOUR
THE COVE

Building 02
2 BEDROOM
UNIT 08/ LEVELS 01-06



| | |
|--------------|-----------------------------|
| Suite Area | 103.43 Sqm. / 1113.31 Sqft. |
| Balcony Area | 13.61 Sqm. / 146.50 Sqft. |
| Total Area | 117.04 Sqm. / 1259.81 Sqft. |

1. All dimensions are in imperial and metric, and measured to structural elements and exclude wall finishes and construction tolerances. 2. All materials, dimensions, and drawings are approximate only. 3. Information is subject to change without notice, at developer's absolute discretion. 4. Actual area may vary from the stated area. 5. Drawings not to scale. 6. All images used are for illustrative purposes only and do not represent the actual size, features, specifications, fittings, and furnishings. 7. The developer reserves the right to make revisions/alterations, at its absolute discretion, without any liability whatsoever.



DUBAI CREEK
HARBOUR
THE COVE

Building 02
2 BEDROOM
UNIT 09/ LEVELS 01-06

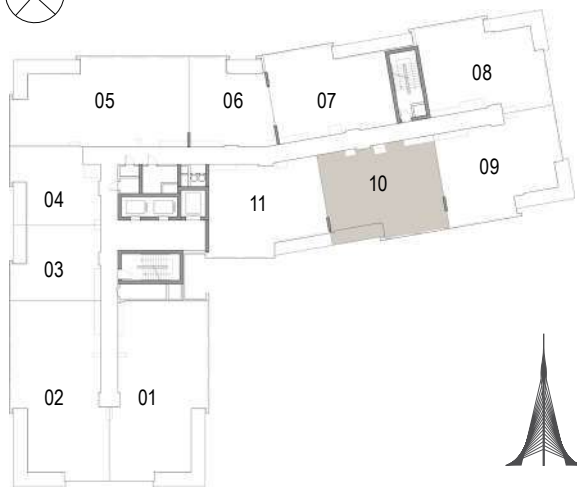


| | |
|--------------|-----------------------------|
| Suite Area | 108.25 Sqm. / 1165.19 Sqft. |
| Balcony Area | 13.62 Sqm. / 146.60 Sqft. |
| Total Area | 121.87 Sqm. / 1311.80 Sqft. |



1. All dimensions are in imperial and metric, and measured to structural elements and exclude wall finishes and construction tolerances. 2. All materials, dimensions, and drawings are approximate only. 3. Information is subject to change without notice, at developer's absolute discretion. 4. Actual area may vary from the stated area. 5. Drawings not to scale. 6. All images used are for illustrative purposes only and do not represent the actual size, features, specifications, fittings, and furnishings. 7. The developer reserves the right to make revisions/alterations, at its absolute discretion, without any liability whatsoever.

Building 02
2 BEDROOM
UNIT 10/ LEVELS 01-06



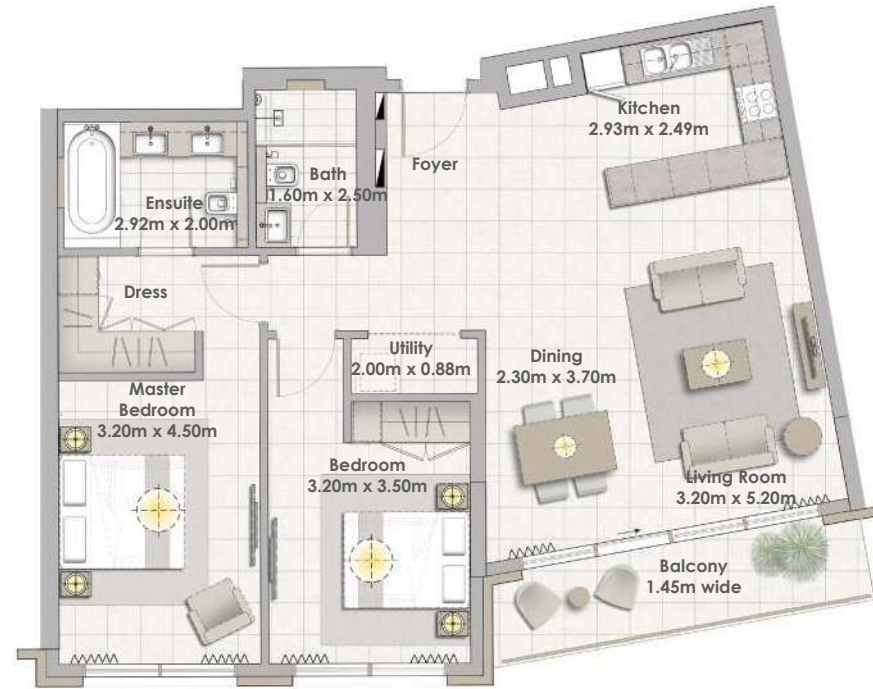
| | |
|--------------|-----------------------------|
| Suite Area | 103.70 Sqm. / 1116.22 Sqft. |
| Balcony Area | 8.52 Sqm. / 91.71 Sqft. |
| Total Area | 112.22 Sqm. / 1207.93 Sqft. |

1. All dimensions are in imperial and metric, and measured to structural elements and exclude wall finishes and construction tolerances. 2. All materials, dimensions, and drawings are approximate only. 3. Information is subject to change without notice, at developer's absolute discretion. 4. Actual area may vary from the stated area. 5. Drawings not to scale. 6. All images used are for illustrative purposes only and do not represent the actual size, features, specifications, fittings, and furnishings. 7. The developer reserves the right to make revisions/alterations, at its absolute discretion, without any liability whatsoever.



DUBAI CREEK
HARBOUR
THE COVE

Building 02
2 BEDROOM
UNIT 11/ LEVELS 01-06

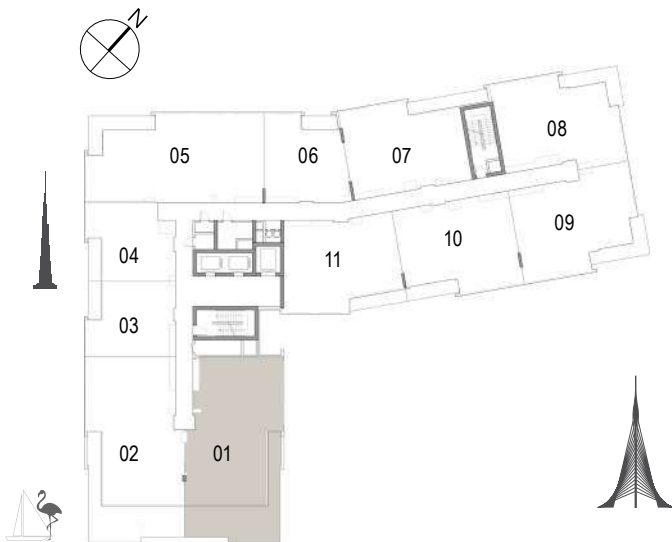


| | |
|--------------|-----------------------------|
| Suite Area | 103.75 Sqm. / 1116.76 Sqft. |
| Balcony Area | 9.25 Sqm. / 99.57 Sqft. |
| Total Area | 113.00 Sqm. / 1216.32 Sqft. |



1. All dimensions are in imperial and metric, and measured to structural elements and exclude wall finishes and construction tolerances. 2. All materials, dimensions, and drawings are approximate only. 3. Information is subject to change without notice, at developer's absolute discretion. 4. Actual area may vary from the stated area. 5. Drawings not to scale. 6. All images used are for illustrative purposes only and do not represent the actual size, features, specifications, fittings, and furnishings. 7. The developer reserves the right to make revisions/alterations, at its absolute discretion, without any liability whatsoever.

Building 02
2 BEDROOM
UNIT 01/ LEVEL 07



| | |
|--------------|-----------------------------|
| Suite Area | 130.17 Sqm. / 1401.14 Sqft. |
| Terrace Area | 50.03 Sqm. / 538.52 Sqft. |
| Total Area | 180.20 Sqm. / 1939.66 Sqft. |

1. All dimensions are in imperial and metric, and measured to structural elements and exclude wall finishes and construction tolerances. 2. All materials, dimensions, and drawings are approximate only. 3. Information is subject to change without notice, at developer's absolute discretion. 4. Actual area may vary from the stated area. 5. Drawings not to scale. 6. All images used are for illustrative purposes only and do not represent the actual size, features, specifications, fittings, and furnishings. 7. The developer reserves the right to make revisions/alterations, at its absolute discretion, without any liability whatsoever.

DUBAI CREEK
HARBOUR
THE COVE

Building 02
2 BEDROOM
UNIT 02/ LEVEL 07

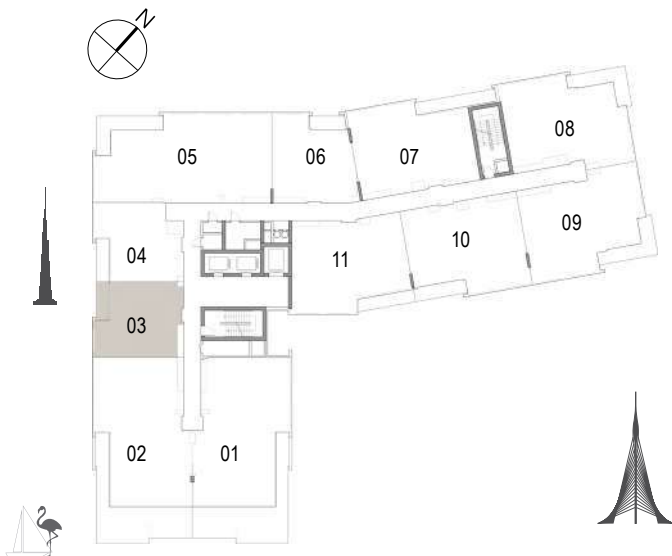


| | |
|--------------|-----------------------------|
| Suite Area | 130.27 Sqm. / 1402.21 Sqft. |
| Terrace Area | 50.03 Sqm. / 538.52 Sqft. |
| Total Area | 180.30 Sqm. / 1940.73 Sqft. |



1. All dimensions are in imperial and metric, and measured to structural elements and exclude wall finishes and construction tolerances. 2. All materials, dimensions, and drawings are approximate only. 3. Information is subject to change without notice, at developer's absolute discretion. 4. Actual area may vary from the stated area. 5. Drawings not to scale. 6. All images used are for illustrative purposes only and do not represent the actual size, features, specifications, fittings, and furnishings. 7. The developer reserves the right to make revisions/alterations, at its absolute discretion, without any liability whatsoever.

Building 02
1 BEDROOM
UNIT 03/ LEVEL 07



| | |
|--------------|---------------------------|
| Suite Area | 62.16 Sqm. / 669.08 Sqft. |
| Balcony Area | 6.38 Sqm. / 68.67 Sqft. |
| Total Area | 68.54 Sqm. / 737.76 Sqft. |

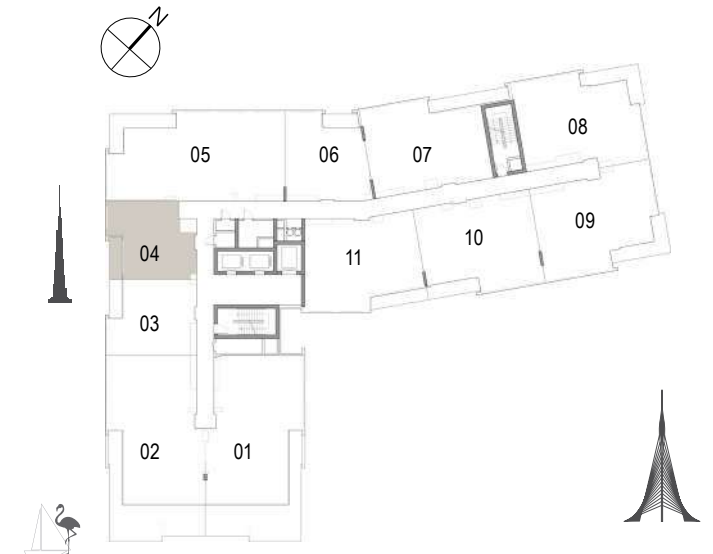
1. All dimensions are in imperial and metric, and measured to structural elements and exclude wall finishes and construction tolerances. 2. All materials, dimensions, and drawings are approximate only. 3. Information is subject to change without notice, at developer's absolute discretion. 4. Actual area may vary from the stated area. 5. Drawings not to scale. 6. All images used are for illustrative purposes only and do not represent the actual size, features, specifications, fittings, and furnishings. 7. The developer reserves the right to make revisions/alterations, at its absolute discretion, without any liability whatsoever.

DUBAI CREEK
HARBOUR
THE COVE

Building 02
1 BEDROOM
UNIT 04/ LEVEL 07

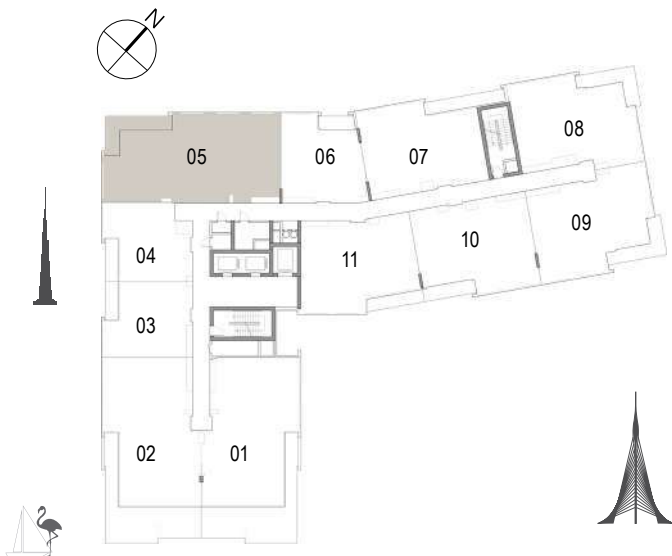
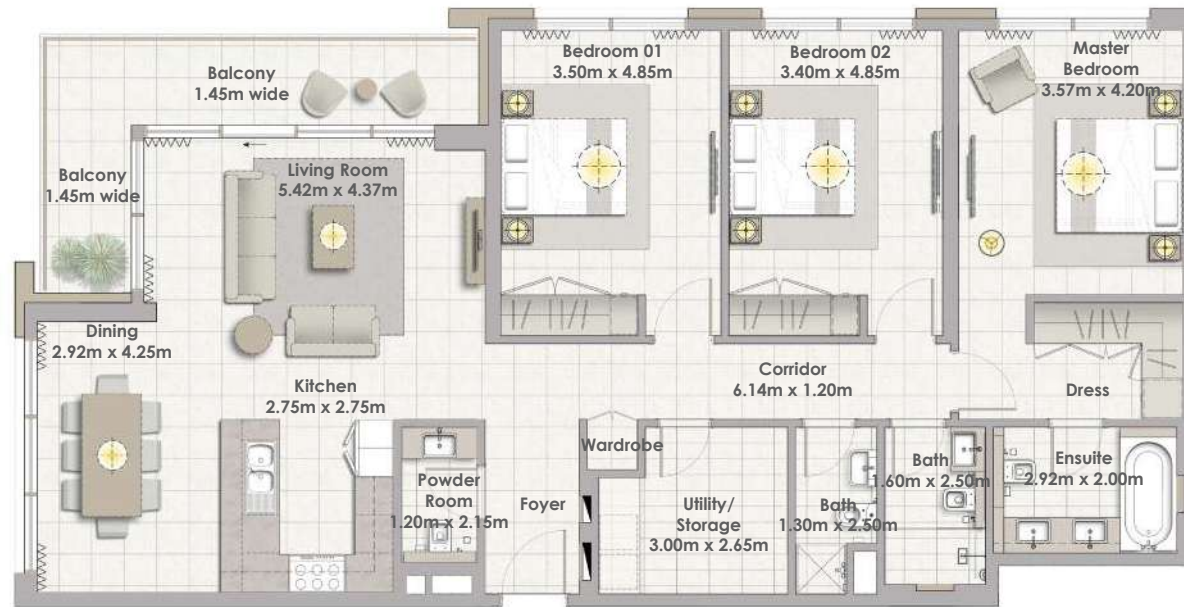


| | |
|--------------|---------------------------|
| Suite Area | 60.44 Sqm. / 650.57 Sqft. |
| Balcony Area | 7.02 Sqm. / 75.56 Sqft. |
| Total Area | 67.46 Sqm. / 726.13 Sqft. |



1. All dimensions are in imperial and metric, and measured to structural elements and exclude wall finishes and construction tolerances. 2. All materials, dimensions, and drawings are approximate only. 3. Information is subject to change without notice, at developer's absolute discretion. 4. Actual area may vary from the stated area. 5. Drawings not to scale. 6. All images used are for illustrative purposes only and do not represent the actual size, features, specifications, fittings, and furnishings. 7. The developer reserves the right to make revisions/alterations, at its absolute discretion, without any liability whatsoever.

Building 02
3 BEDROOM
UNIT 05/ LEVEL 07



| | |
|--------------|-----------------------------|
| Suite Area | 148.24 Sqm. / 1595.64 Sqft. |
| Balcony Area | 14.78 Sqm. / 159.09 Sqft. |
| Total Area | 163.02 Sqm. / 1754.73 Sqft. |

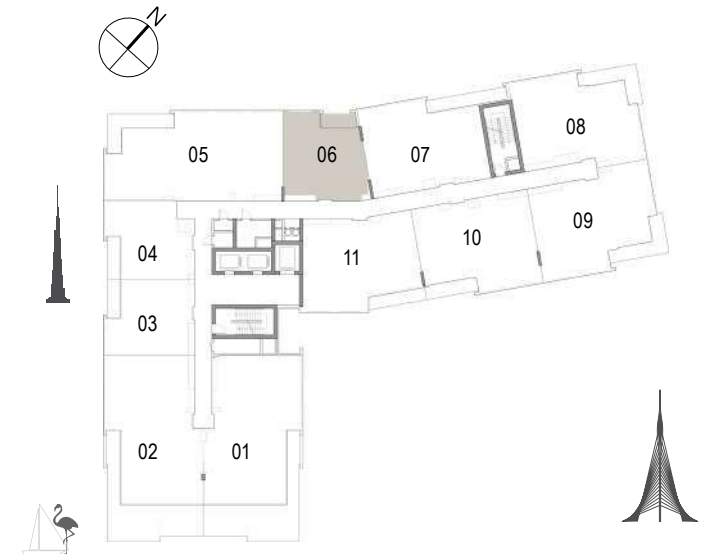
1. All dimensions are in imperial and metric, and measured to structural elements and exclude wall finishes and construction tolerances. 2. All materials, dimensions, and drawings are approximate only. 3. Information is subject to change without notice, at developer's absolute discretion. 4. Actual area may vary from the stated area. 5. Drawings not to scale. 6. All images used are for illustrative purposes only and do not represent the actual size, features, specifications, fittings, and furnishings. 7. The developer reserves the right to make revisions/alterations, at its absolute discretion, without any liability whatsoever.

DUBAI CREEK
HARBOUR
THE COVE

Building 02
1 BEDROOM
UNIT 06/ LEVEL 07

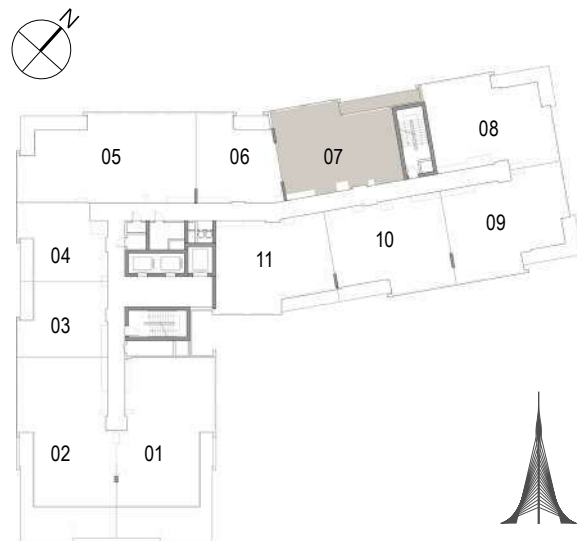


| | |
|--------------|---------------------------|
| Suite Area | 67.15 Sqm. / 722.80 Sqft. |
| Balcony Area | 6.45 Sqm. / 69.43 Sqft. |
| Total Area | 73.60 Sqm. / 792.22 Sqft. |



1. All dimensions are in imperial and metric, and measured to structural elements and exclude wall finishes and construction tolerances. 2. All materials, dimensions, and drawings are approximate only. 3. Information is subject to change without notice, at developer's absolute discretion. 4. Actual area may vary from the stated area. 5. Drawings not to scale. 6. All images used are for illustrative purposes only and do not represent the actual size, features, specifications, fittings, and furnishings. 7. The developer reserves the right to make revisions/alterations, at its absolute discretion, without any liability whatsoever.

Building 02
2 BEDROOM
UNIT 07/ LEVEL 07

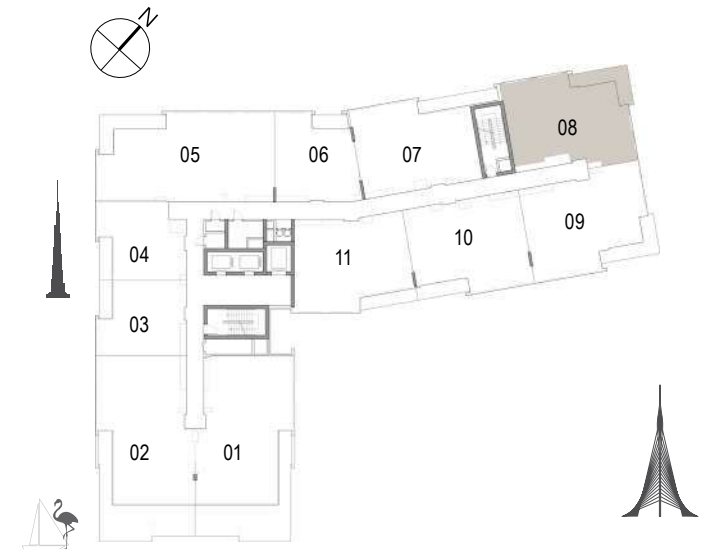


| | |
|-------------------|------------------------------------|
| Suite Area | 102.58 Sqm. / 1104.16 Sqft. |
| Balcony Area | 13.60 Sqm. / 146.39 Sqft. |
| Total Area | 116.18 Sqm. / 1250.55 Sqft. |

1. All dimensions are in imperial and metric, and measured to structural elements and exclude wall finishes and construction tolerances. 2. All materials, dimensions, and drawings are approximate only. 3. Information is subject to change without notice, at developer's absolute discretion. 4. Actual area may vary from the stated area. 5. Drawings not to scale. 6. All images used are for illustrative purposes only and do not represent the actual size, features, specifications, fittings, and furnishings. 7. The developer reserves the right to make revisions/alterations, at its absolute discretion, without any liability whatsoever.

DUBAI CREEK
HARBOUR
THE COVE

Building 02
2 BEDROOM
UNIT 08/ LEVEL 07

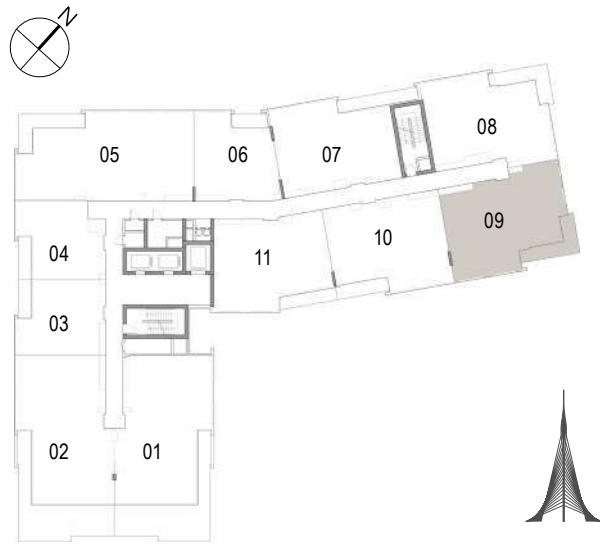


| | |
|--------------|-----------------------------|
| Suite Area | 103.43 Sqm. / 1113.31 Sqft. |
| Balcony Area | 13.61 Sqm. / 146.50 Sqft. |
| Total Area | 117.04 Sqm. / 1259.81 Sqft. |



1. All dimensions are in imperial and metric, and measured to structural elements and exclude wall finishes and construction tolerances. 2. All materials, dimensions, and drawings are approximate only. 3. Information is subject to change without notice, at developer's absolute discretion. 4. Actual area may vary from the stated area. 5. Drawings not to scale. 6. All images used are for illustrative purposes only and do not represent the actual size, features, specifications, fittings, and furnishings. 7. The developer reserves the right to make revisions/alterations, at its absolute discretion, without any liability whatsoever.

Building 02
2 BEDROOM
UNIT 09/ LEVEL 07



| | |
|--------------|-----------------------------|
| Suite Area | 108.25 Sqm. / 1165.19 Sqft. |
| Balcony Area | 13.62 Sqm. / 146.60 Sqft. |
| Total Area | 121.87 Sqm. / 1311.80 Sqft. |

1. All dimensions are in imperial and metric, and measured to structural elements and exclude wall finishes and construction tolerances. 2. All materials, dimensions, and drawings are approximate only. 3. Information is subject to change without notice, at developer's absolute discretion. 4. Actual area may vary from the stated area. 5. Drawings not to scale. 6. All images used are for illustrative purposes only and do not represent the actual size, features, specifications, fittings, and furnishings. 7. The developer reserves the right to make revisions/alterations, at its absolute discretion, without any liability whatsoever.

DUBAI CREEK
HARBOUR
THE COVE

Building 02
2 BEDROOM
UNIT 10/ LEVEL 07

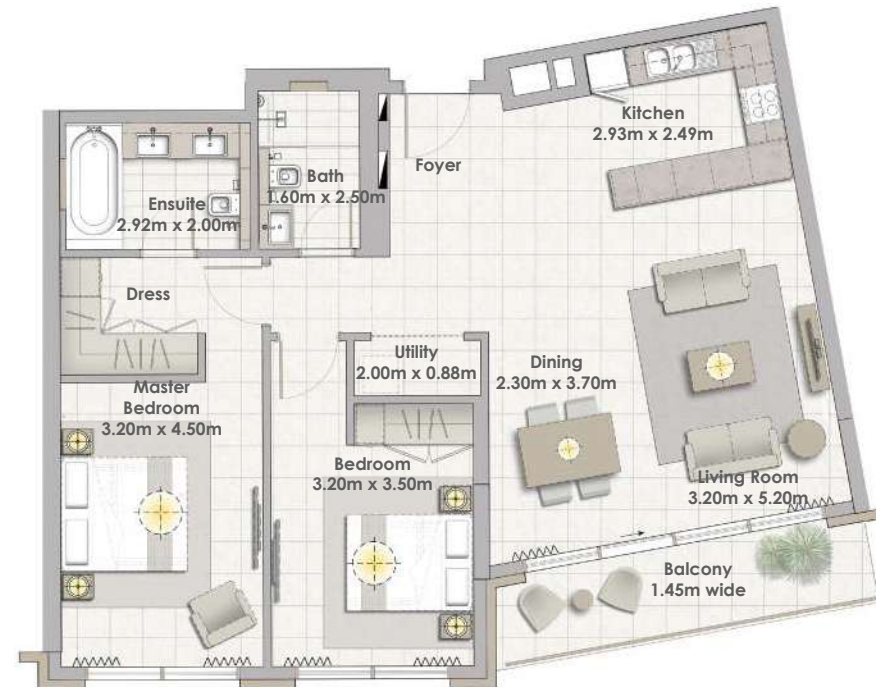


| | |
|--------------|-----------------------------|
| Suite Area | 103.70 Sqm. / 1116.22 Sqft. |
| Balcony Area | 8.52 Sqm. / 91.71 Sqft. |
| Total Area | 112.22 Sqm. / 1207.93 Sqft. |



1. All dimensions are in imperial and metric, and measured to structural elements and exclude wall finishes and construction tolerances. 2. All materials, dimensions, and drawings are approximate only. 3. Information is subject to change without notice, at developer's absolute discretion. 4. Actual area may vary from the stated area. 5. Drawings not to scale. 6. All images used are for illustrative purposes only and do not represent the actual size, features, specifications, fittings, and furnishings. 7. The developer reserves the right to make revisions/alterations, at its absolute discretion, without any liability whatsoever.

Building 02
2 BEDROOM
UNIT 11/ LEVEL 07



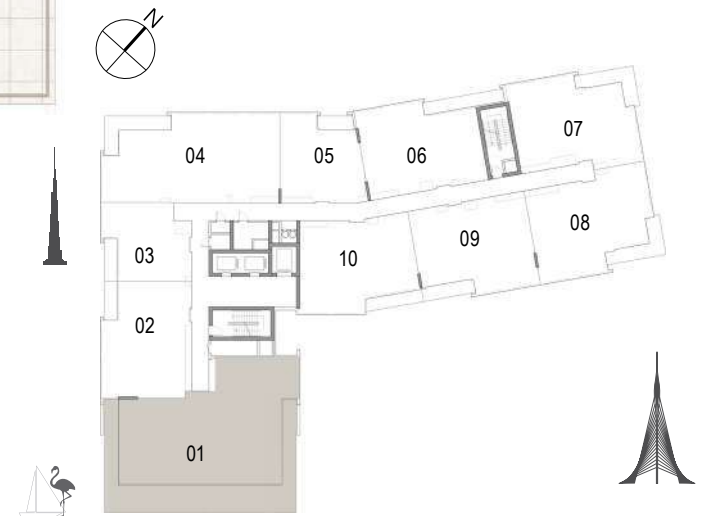
| | |
|--------------|-----------------------------|
| Suite Area | 103.75 Sqm. / 1116.76 Sqft. |
| Balcony Area | 9.25 Sqm. / 99.57 Sqft. |
| Total Area | 113.00 Sqm. / 1216.32 Sqft. |

1. All dimensions are in imperial and metric, and measured to structural elements and exclude wall finishes and construction tolerances. 2. All materials, dimensions, and drawings are approximate only. 3. Information is subject to change without notice, at developer's absolute discretion. 4. Actual area may vary from the stated area. 5. Drawings not to scale. 6. All images used are for illustrative purposes only and do not represent the actual size, features, specifications, fittings, and furnishings. 7. The developer reserves the right to make revisions/alterations, at its absolute discretion, without any liability whatsoever.

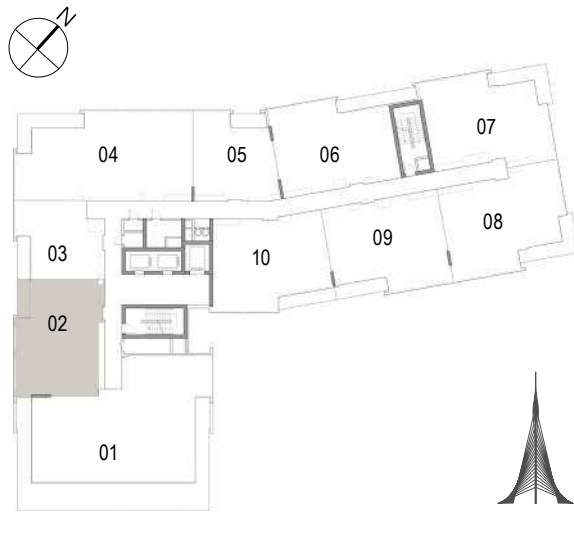
Building 02
3 BEDROOM
UNIT 01/ LEVEL 08



| | |
|--------------|-----------------------------|
| Suite Area | 187.23 Sqm. / 2015.33 Sqft. |
| Terrace Area | 84.91 Sqm. / 913.96 Sqft. |
| Total Area | 272.14 Sqm. / 2929.29 Sqft. |



Building 02
2 BEDROOM
UNIT 02/ LEVEL 08



| | |
|--------------|-----------------------------|
| Suite Area | 98.30 Sqm. / 1058.09 Sqft. |
| Balcony Area | 6.38 Sqm. / 68.67 Sqft. |
| Total Area | 104.68 Sqm. / 1126.77 Sqft. |

1. All dimensions are in imperial and metric, and measured to structural elements and exclude wall finishes and construction tolerances. 2. All materials, dimensions, and drawings are approximate only. 3. Information is subject to change without notice, at developer's absolute discretion. 4. Actual area may vary from the stated area. 5. Drawings not to scale. 6. All images used are for illustrative purposes only and do not represent the actual size, features, specifications, fittings, and furnishings. 7. The developer reserves the right to make revisions/alterations, at its absolute discretion, without any liability whatsoever.

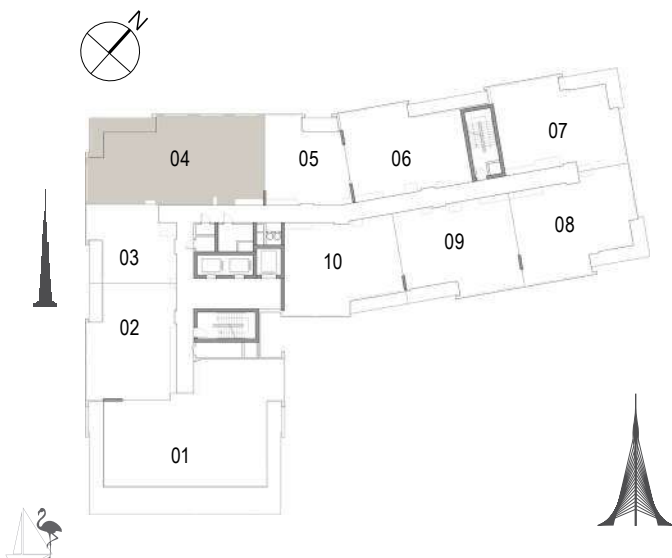
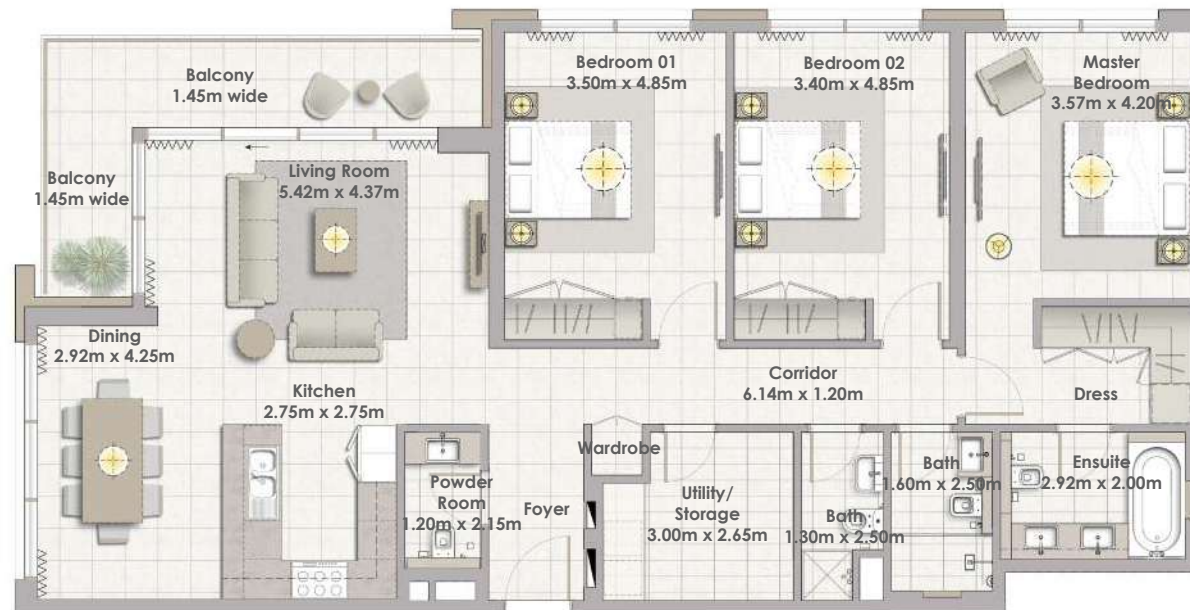
Building 02
1 BEDROOM
UNIT 03/ LEVEL 08



| | |
|--------------|---------------------------|
| Suite Area | 60.44 Sqm. / 650.57 Sqft. |
| Balcony Area | 7.02 Sqm. / 75.56 Sqft. |
| Total Area | 67.46 Sqm. / 726.13 Sqft. |



Building 02
3 BEDROOM
UNIT 04/ LEVEL 08



| | |
|--------------|-----------------------------|
| Suite Area | 148.24 Sqm. / 1595.64 Sqft. |
| Balcony Area | 14.78 Sqm. / 159.09 Sqft. |
| Total Area | 163.02 Sqm. / 1754.73 Sqft. |

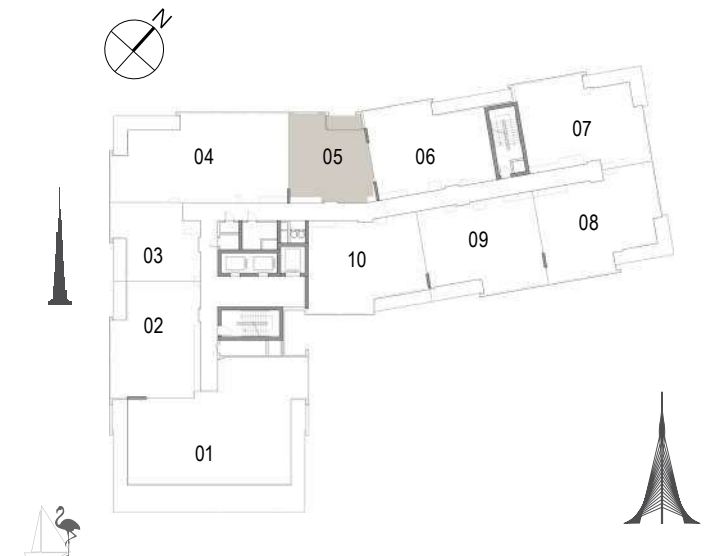
1. All dimensions are in imperial and metric, and measured to structural elements and exclude wall finishes and construction tolerances. 2. All materials, dimensions, and drawings are approximate only. 3. Information is subject to change without notice, at developer's absolute discretion. 4. Actual area may vary from the stated area. 5. Drawings not to scale. 6. All images used are for illustrative purposes only and do not represent the actual size, features, specifications, fittings, and furnishings. 7. The developer reserves the right to make revisions/alterations, at its absolute discretion, without any liability whatsoever.

DUBAI CREEK
HARBOUR
THE COVE

Building 02
1 BEDROOM
UNIT 05/ LEVEL 08

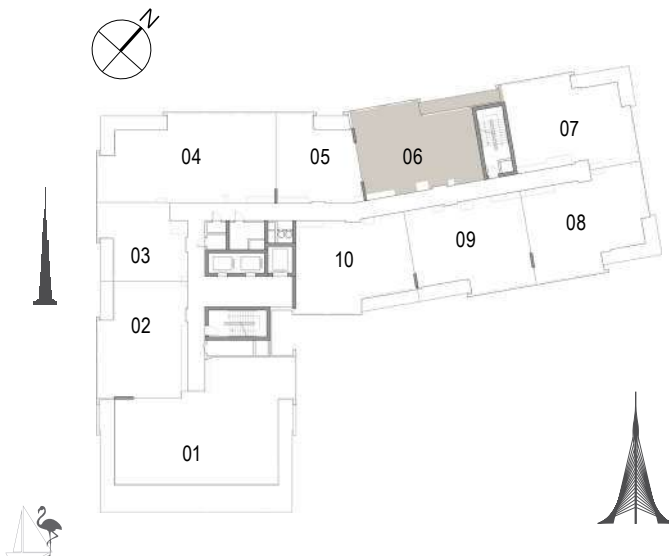


| | |
|--------------|---------------------------|
| Suite Area | 67.15 Sqm. / 722.80 Sqft. |
| Balcony Area | 6.45 Sqm. / 69.43 Sqft. |
| Total Area | 73.60 Sqm. / 792.22 Sqft. |



1. All dimensions are in imperial and metric, and measured to structural elements and exclude wall finishes and construction tolerances. 2. All materials, dimensions, and drawings are approximate only. 3. Information is subject to change without notice, at developer's absolute discretion. 4. Actual area may vary from the stated area. 5. Drawings not to scale. 6. All images used are for illustrative purposes only and do not represent the actual size, features, specifications, fittings, and furnishings. 7. The developer reserves the right to make revisions/alterations, at its absolute discretion, without any liability whatsoever.

Building 02
2 BEDROOM
UNIT 06/ LEVEL 08

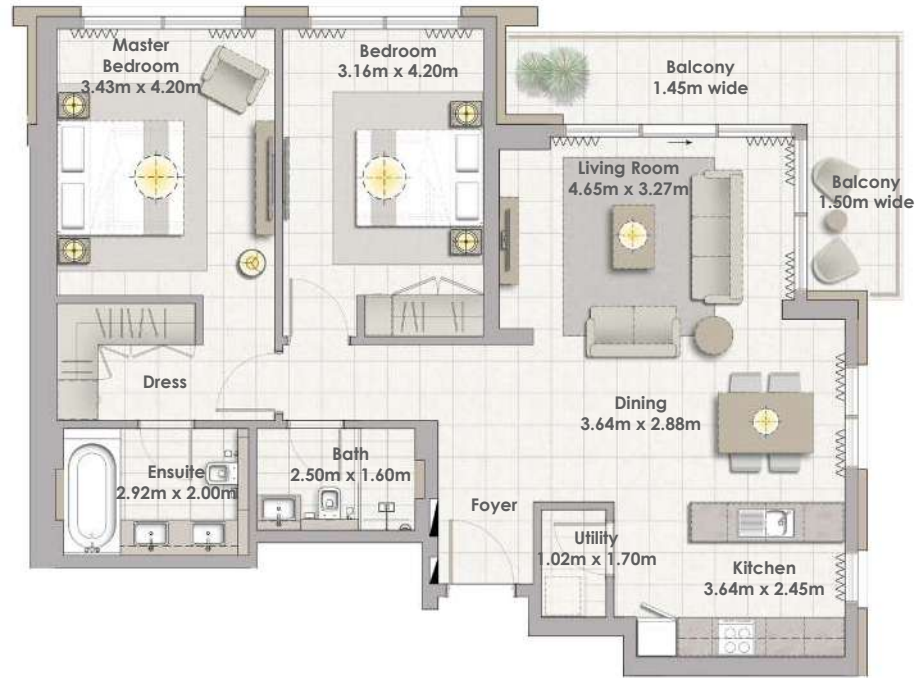


| | |
|--------------|-----------------------------|
| Suite Area | 102.58 Sqm. / 1104.16 Sqft. |
| Balcony Area | 13.60 Sqm. / 146.39 Sqft. |
| Total Area | 116.18 Sqm. / 1250.55 Sqft. |

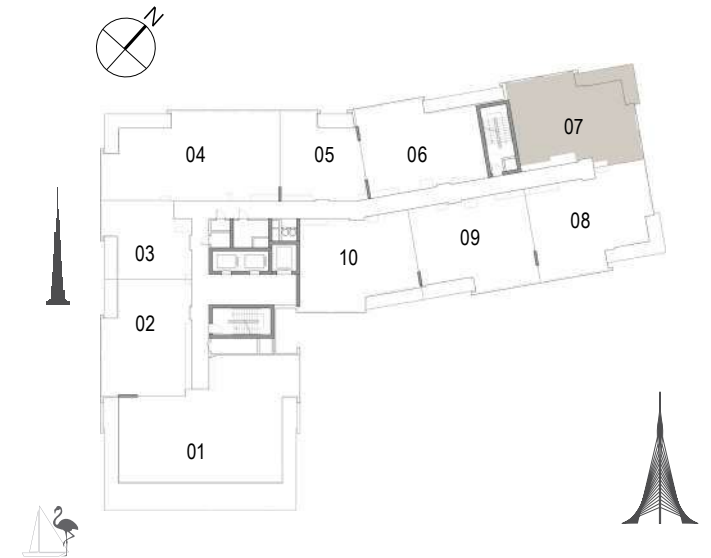
1. All dimensions are in imperial and metric, and measured to structural elements and exclude wall finishes and construction tolerances. 2. All materials, dimensions, and drawings are approximate only. 3. Information is subject to change without notice, at developer's absolute discretion. 4. Actual area may vary from the stated area. 5. Drawings not to scale. 6. All images used are for illustrative purposes only and do not represent the actual size, features, specifications, fittings, and furnishings. 7. The developer reserves the right to make revisions/alterations, at its absolute discretion, without any liability whatsoever.

DUBAI CREEK
HARBOUR
THE COVE

Building 02
2 BEDROOM
UNIT 07/ LEVEL 08



| | |
|--------------|-----------------------------|
| Suite Area | 103.43 Sqm. / 1113.31 Sqft. |
| Balcony Area | 13.61 Sqm. / 146.50 Sqft. |
| Total Area | 117.04 Sqm. / 1259.81 Sqft. |



1. All dimensions are in imperial and metric, and measured to structural elements and exclude wall finishes and construction tolerances. 2. All materials, dimensions, and drawings are approximate only. 3. Information is subject to change without notice, at developer's absolute discretion. 4. Actual area may vary from the stated area. 5. Drawings not to scale. 6. All images used are for illustrative purposes only and do not represent the actual size, features, specifications, fittings, and furnishings. 7. The developer reserves the right to make revisions/alterations, at its absolute discretion, without any liability whatsoever.

Building 02
2 BEDROOM
UNIT 08/ LEVEL 08



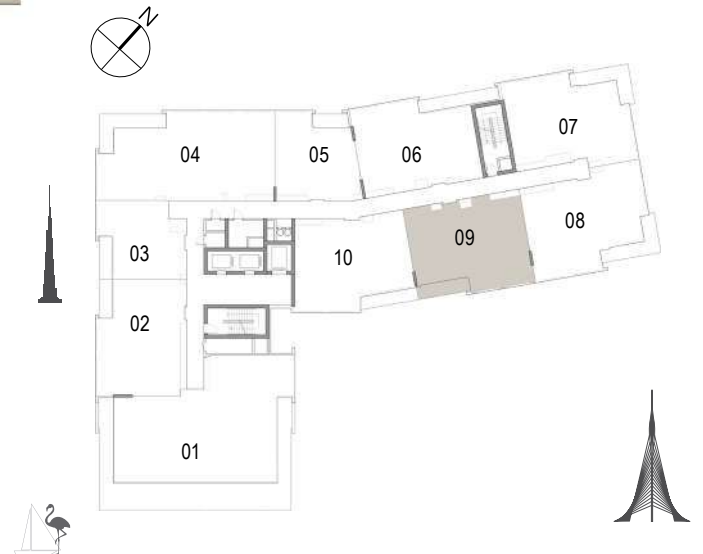
| | |
|--------------|-----------------------------|
| Suite Area | 108.25 Sqm. / 1165.19 Sqft. |
| Balcony Area | 13.62 Sqm. / 146.60 Sqft. |
| Total Area | 121.87 Sqm. / 1311.80 Sqft. |

1. All dimensions are in imperial and metric, and measured to structural elements and exclude wall finishes and construction tolerances. 2. All materials, dimensions, and drawings are approximate only. 3. Information is subject to change without notice, at developer's absolute discretion. 4. Actual area may vary from the stated area. 5. Drawings not to scale. 6. All images used are for illustrative purposes only and do not represent the actual size, features, specifications, fittings, and furnishings. 7. The developer reserves the right to make revisions/alterations, at its absolute discretion, without any liability whatsoever.

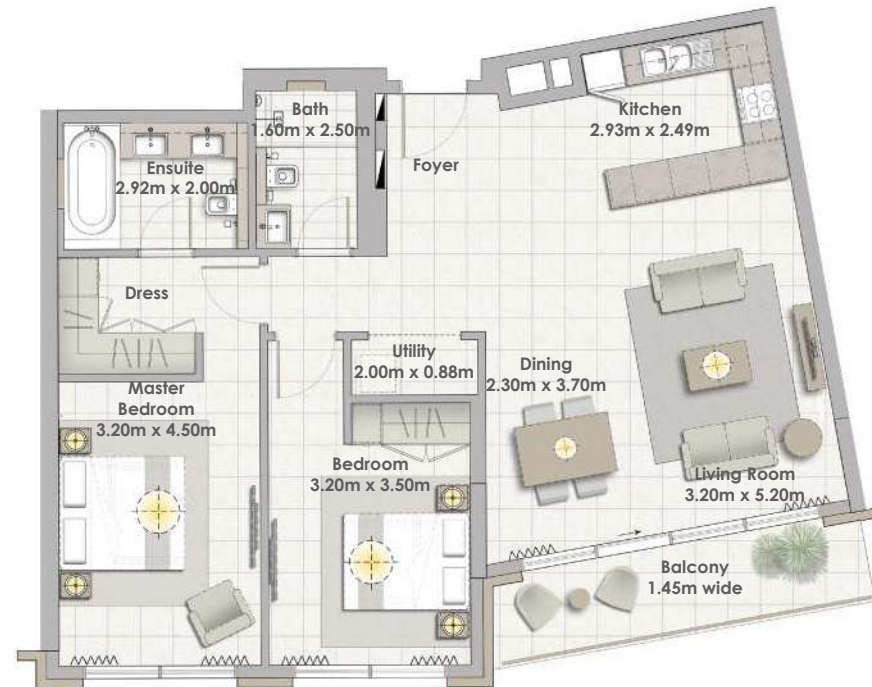
Building 02
2 BEDROOM
UNIT 09/ LEVEL 08



| | |
|--------------|-----------------------------|
| Suite Area | 103.70 Sqm. / 1116.22 Sqft. |
| Balcony Area | 8.52 Sqm. / 91.71 Sqft. |
| Total Area | 112.22 Sqm. / 1207.93 Sqft. |



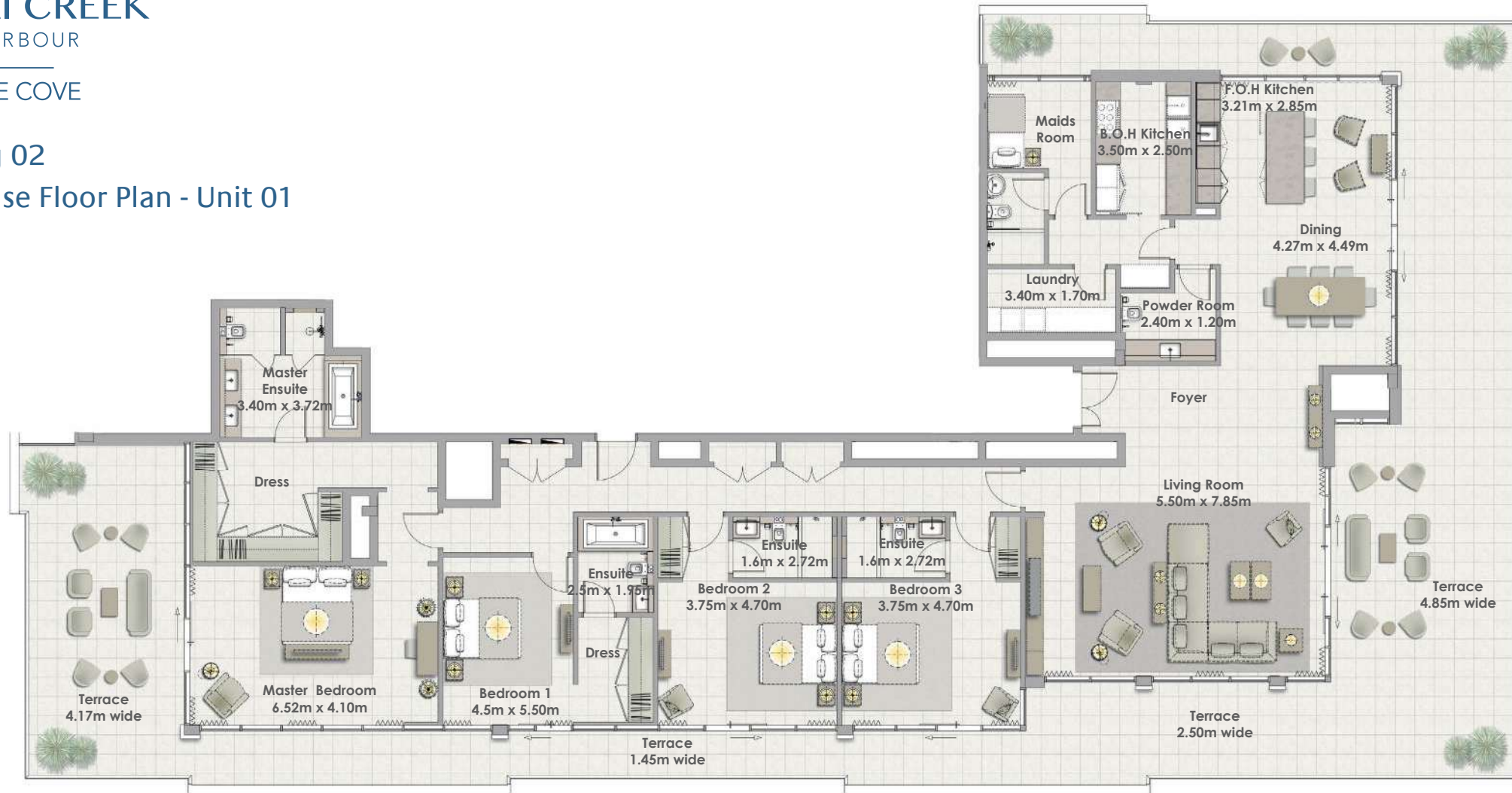
Building 02
2 BEDROOM
UNIT 10/ LEVEL 08



| | |
|--------------|-----------------------------|
| Suite Area | 103.75 Sqm. / 1116.76 Sqft. |
| Balcony Area | 9.25 Sqm. / 99.57 Sqft. |
| Total Area | 113.00 Sqm. / 1216.32 Sqft. |

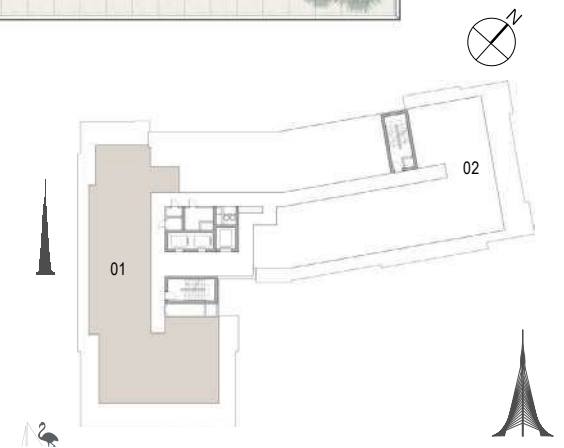
1. All dimensions are in imperial and metric, and measured to structural elements and exclude wall finishes and construction tolerances. 2. All materials, dimensions, and drawings are approximate only. 3. Information is subject to change without notice, at developer's absolute discretion. 4. Actual area may vary from the stated area. 5. Drawings not to scale. 6. All images used are for illustrative purposes only and do not represent the actual size, features, specifications, fittings, and furnishings. 7. The developer reserves the right to make revisions/alterations, at its absolute discretion, without any liability whatsoever.

Building 02
Penthouse Floor Plan - Unit 01



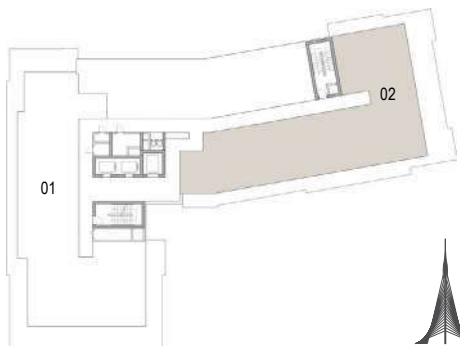
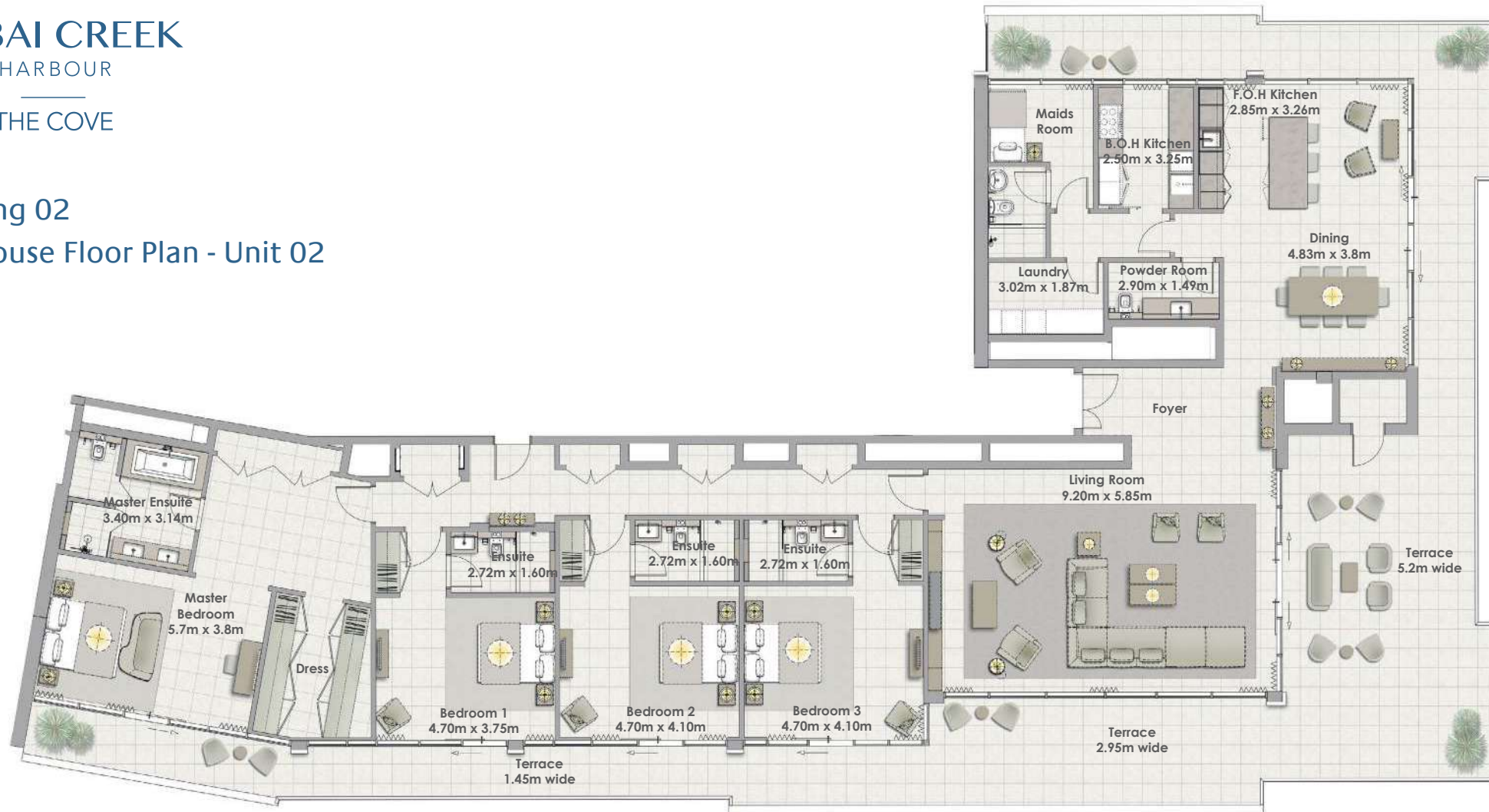
Building 02
4 BEDROOM
UNIT 01/ LEVELS 09

| | |
|--------------|-----------------------------|
| Suite Area | 315.38 Sqm. / 3394.72 Sqft. |
| Balcony Area | 186.23 Sqm. / 2004.56Sqft. |
| Total Area | 501.61Sqm. / 5399.28 Sqft. |



DUBAI CREEK
HARBOUR
THE COVE

Building 02
Penthouse Floor Plan - Unit 02



Building 02
4 BEDROOM
UNIT 02/ LEVELS 09

| | |
|--------------|----------------------------|
| Suite Area | 325.25Sqm. / 3500.96Sqft. |
| Terrace Area | 153.31Sqm. / 1650 Sqft. |
| Total Area | 478.56 Sqm. /5151.18 Sqft. |

1. All dimensions are in imperial and metric, and measured to structural elements and exclude wall finishes and construction tolerances. 2. All materials, dimensions, and drawings are approximate only. 3. Information is subject to change without notice, at developer's absolute discretion. 4. Actual area may vary from the stated area. 5. Drawings not to scale. 6. All images used are for illustrative purposes only and do not represent the actual size, features, specifications, fittings, and furnishings. 7. The developer reserves the right to make revisions/alterations, at its absolute discretion, without any liability whatsoever.

