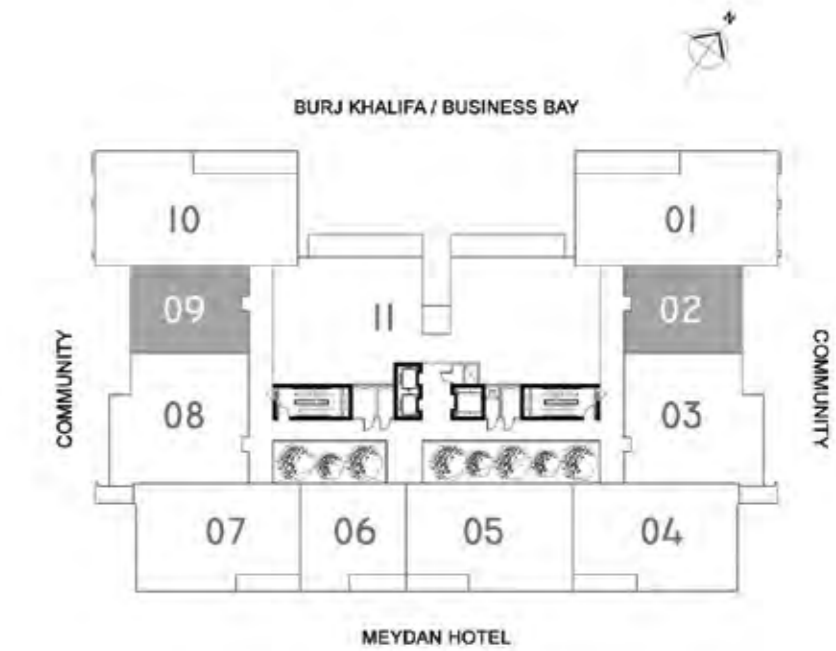


ONE BEDROOM APARTMENT - TYPE A

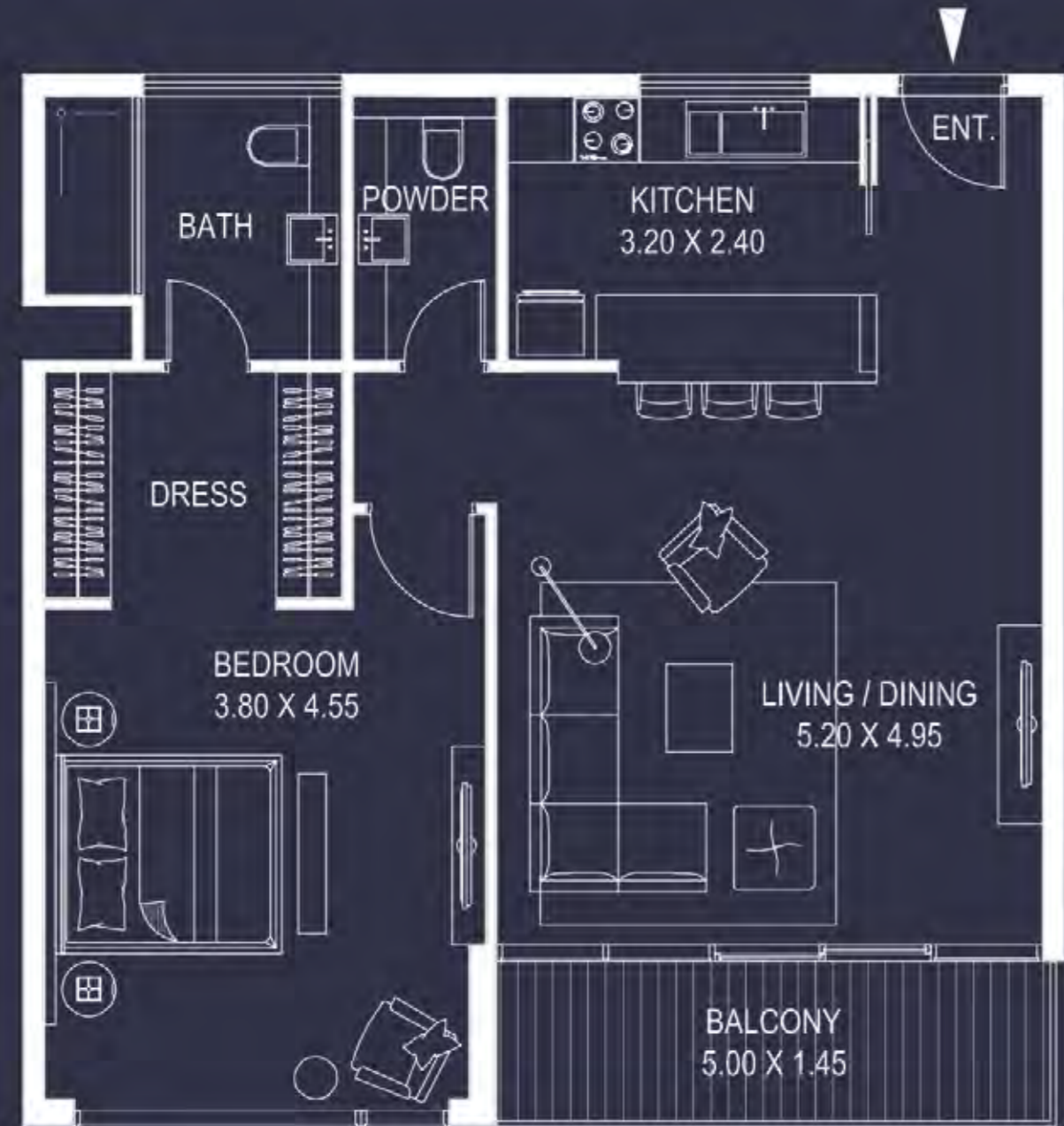
KEY PLAN

6 Nos.
(1st to 3rd Floor)



1 BED TYPE A					
Levels	Unit No.	Views	Area (sq.ft.)*		Total
			Unit	Balcony	
1	102	Neighbour	845.00	0.00	845.00
1	109	Neighbour	845.00	0.00	845.00
2	202	Neighbour	845.00	0.00	845.00
2	209	Neighbour	845.00	0.00	845.00
3	302	Neighbour	845.00	0.00	845.00
3	309	Neighbour	845.00	0.00	845.00
Total					6

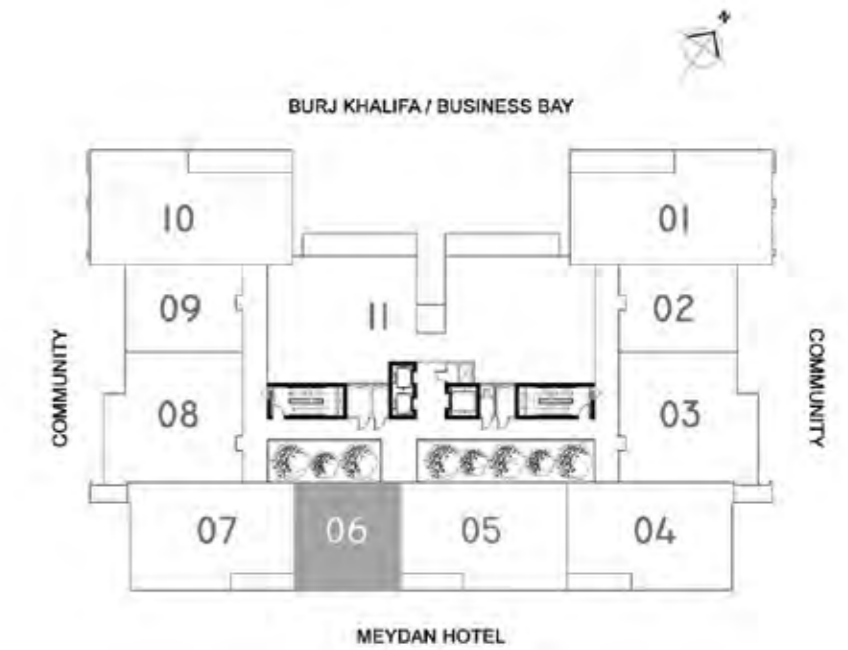
* Leasable area and Balcony location may vary from floor to floor.
* Dimension of the spaces, Furniture, Wardrobe and Bath Fixtures are indicative and may vary.



ONE BEDROOM APARTMENT - TYPE B

KEY PLAN

■ 3 Nos.
(1st to 3rd Floor)



1 BED TYPE B					
Levels	Unit No.	Views	Area (sq.ft.)*		Total
			Unit	Balcony	
1	106	Meydan Hotel	845.00	70.00	915.00
2	206	Meydan Hotel	845.00	70.00	915.00
3	306	Meydan Hotel	845.00	70.00	915.00
Total					3

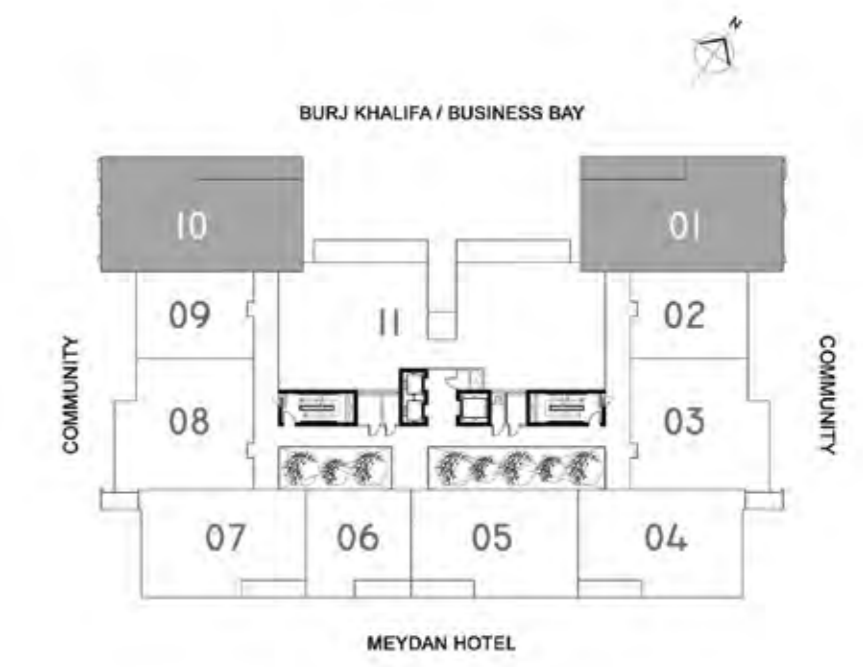
* Leasable area and Balcony location may vary from floor to floor.
* Dimension of the spaces, Furniture, Wardrobe and Bath Fixtures are indicative and may vary.



TWO BEDROOM APARTMENT - TYPE A

KEY PLAN

6 Nos.
(1st to 3rd Floor)



2 BED TYPE A					
Levels	Unit No.	Views	Area (sq.ft.)*		Total
			Unit	Balcony	
1	101	Burj / BB	1,665.00	205.00	1,870.00
1	110	Burj / BB	1,665.00	205.00	1,870.00
2	201	Burj / BB	1,665.00	205.00	1,870.00
2	210	Burj / BB	1,665.00	205.00	1,870.00
3	301	Burj / BB	1,665.00	195.00	1,860.00
3	310	Burj / BB	1,665.00	195.00	1,860.00
Total					6

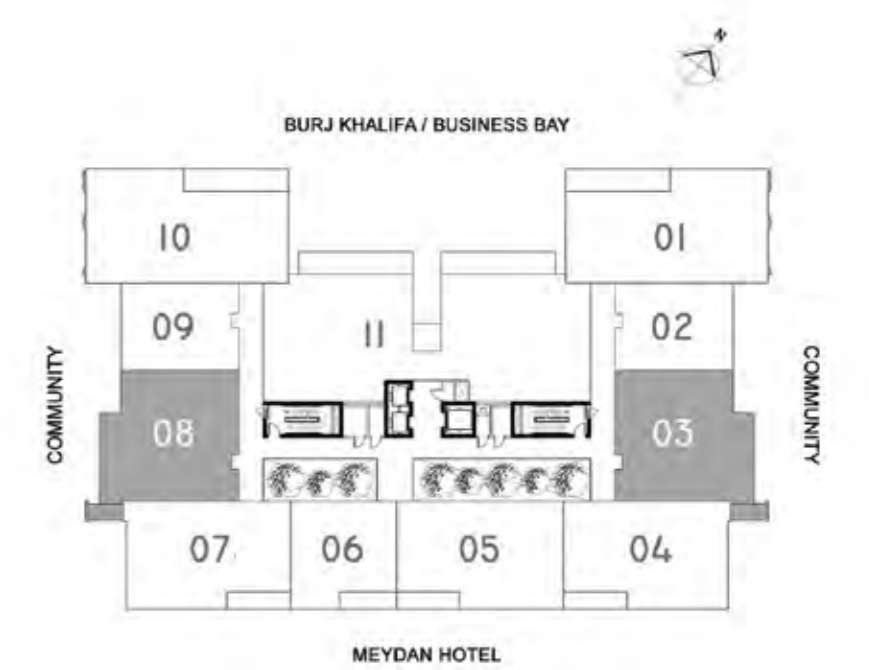
* Leasable area and Balcony location may vary from floor to floor.
* Dimension of the spaces, Furniture, Wardrobe and Bath Fixtures are indicative and may vary.



TWO BEDROOM APARTMENT - TYPE B

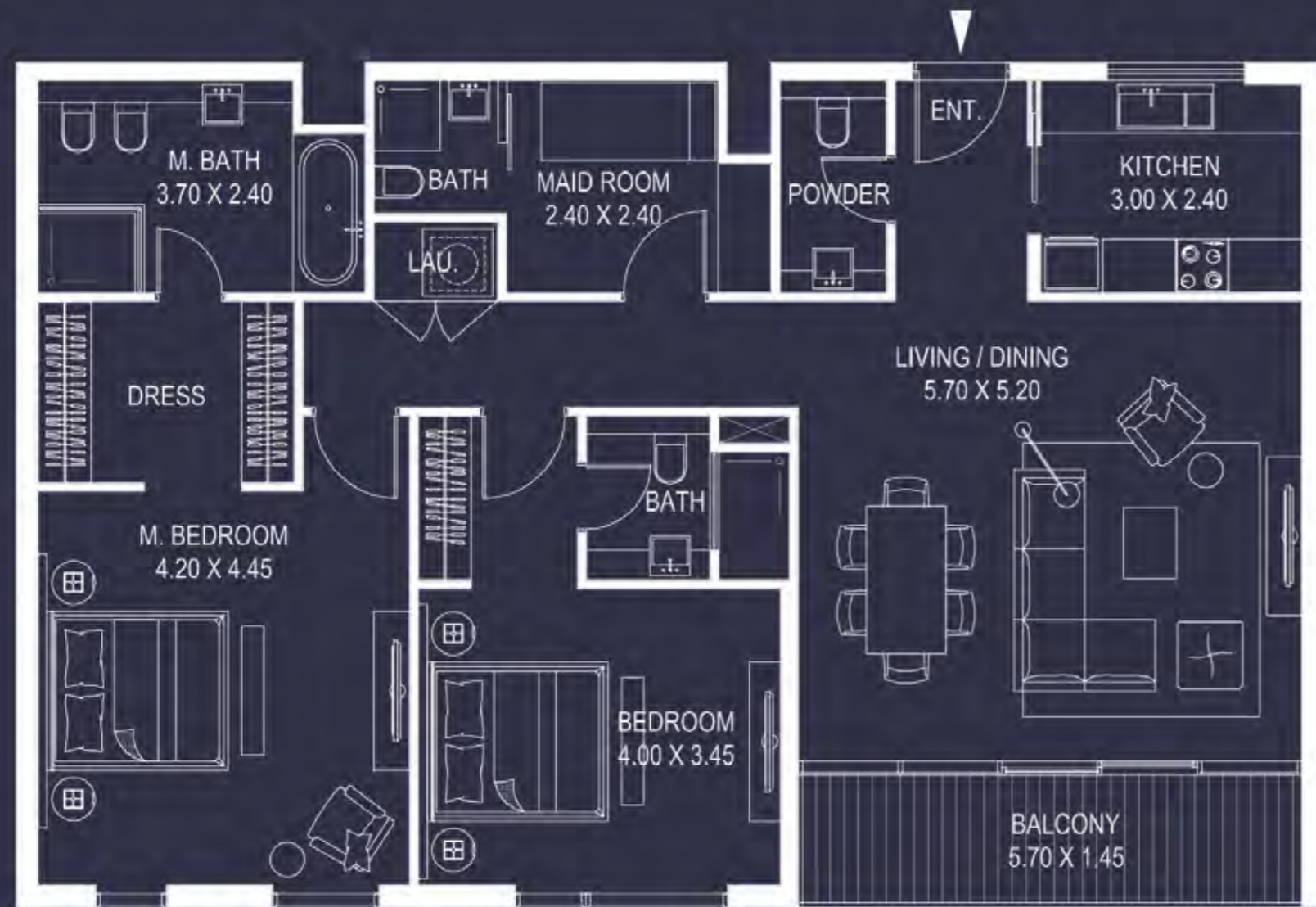
KEY PLAN

6 Nos.
(1st to 3rd Floor)



2 BED TYPE B					
Levels	Unit No.	Views	Area (sq.ft.)*		Total
			Unit	Balcony	
1	103	Neighbour	1,405.00	60.00	1,465.00
1	108	Neighbour	1,405.00	60.00	1,465.00
2	203	Neighbour	1,405.00	60.00	1,465.00
2	208	Neighbour	1,405.00	60.00	1,465.00
3	303	Neighbour	1,405.00	60.00	1,465.00
3	308	Neighbour	1,405.00	60.00	1,465.00
Total					6

* Leasable area and Balcony location may vary from floor to floor.
* Dimension of the spaces, Furniture, Wardrobe and Bath Fixtures are indicative and may vary.



TWO BEDROOM APARTMENT - TYPE C1

KEY PLAN

3 Nos.
(1st to 3rd Floor)



2 BED TYPE C1					
Levels	Unit No.	Views	Area (sq.ft.)*		Total
			Unit	Balcony	
1	107	Meydan Hotel	1,355.00	95.00	1,450.00
2	207	Meydan Hotel	1,355.00	95.00	1,450.00
3	307	Meydan Hotel	1,355.00	95.00	1,450.00
Total					3

* Leasable area and Balcony location may vary from floor to floor.
* Dimension of the spaces, Furniture, Wardrobe and Bath Fixtures are indicative and may vary.



TWO BEDROOM APARTMENT - TYPE C2

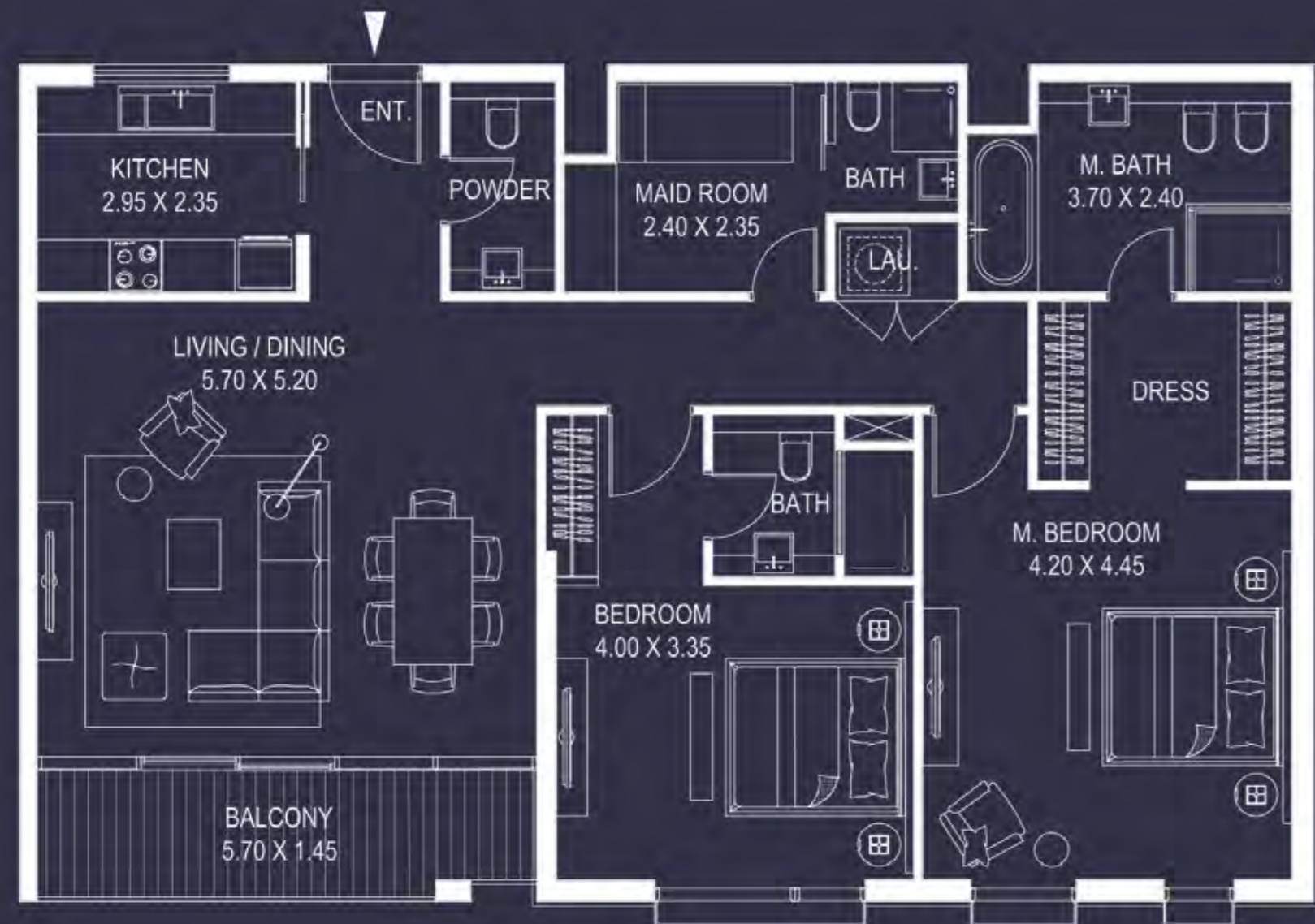
KEY PLAN

3 Nos.
(1st to 3rd Floor)



2 BED TYPE C2					
Levels	Unit No.	Views	Area (sq.ft.)*		Total
			Unit	Balcony	
1	105	Meydan Hotel	1,370.00	80.00	1,450.00
2	205	Meydan Hotel	1,370.00	80.00	1,450.00
3	305	Meydan Hotel	1,370.00	80.00	1,450.00
Total					3

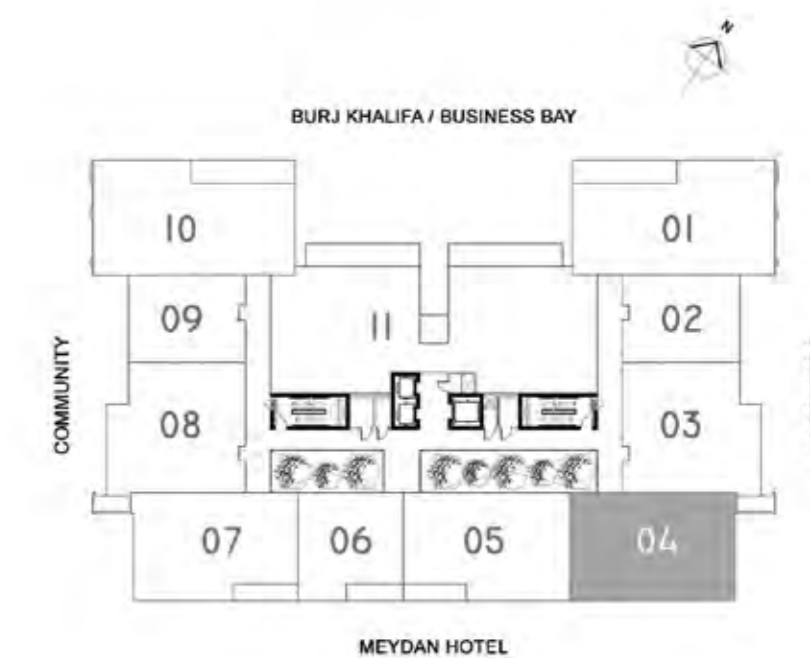
* Leasable area and Balcony location may vary from floor to floor.
* Dimension of the spaces, Furniture, Wardrobe and Bath Fixtures are indicative and may vary.



TWO BEDROOM APARTMENT - TYPE C3

KEY PLAN

3 Nos.
(1st to 3rd Floor)



2 BED TYPE C3					
Levels	Unit No.	Views	Area (sq.ft.)*		Total
			Unit	Balcony	
1	104	Meydan Hotel	1,355.00	95.00	1,450.00
2	204	Meydan Hotel	1,355.00	95.00	1,450.00
3	304	Meydan Hotel	1,355.00	95.00	1,450.00
Total					3

* Leasable area and Balcony location may vary from floor to floor.
* Dimension of the spaces, Furniture, Wardrobe and Bath Fixtures are indicative and may vary.



TWO BEDROOM APARTMENT - TYPE D

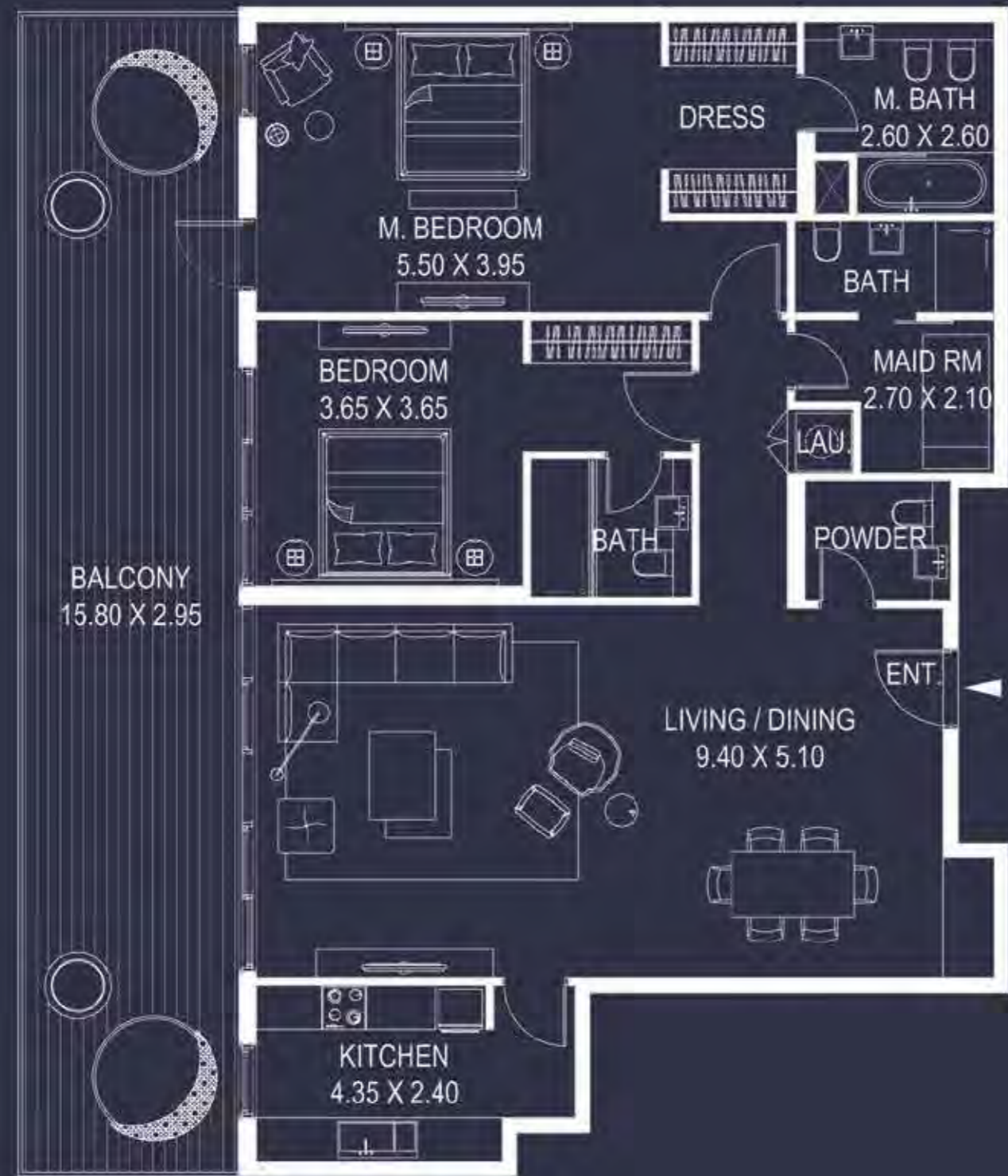
KEY PLAN

■ 2 Nos. (1st Floor)



2 BED TYPE D					
Levels	Unit No.	Views	Area (sq.ft.)*		Total
			Unit	Balcony	
1	111	Burj / BB	1,535.00	125.00	1,660.00
1	112	Burj / BB	1,535.00	125.00	1,660.00
Total					2

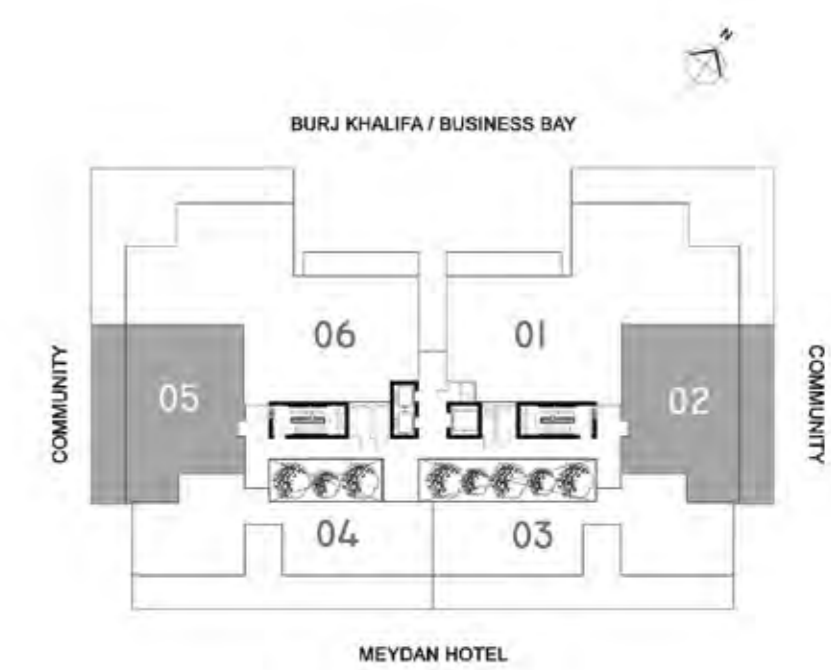
* Leasable area and Balcony location may vary from floor to floor.
 * Dimension of the spaces, Furniture, Wardrobe and Bath Fixtures are indicative and may vary.



TWO BEDROOM APARTMENT - TYPE E

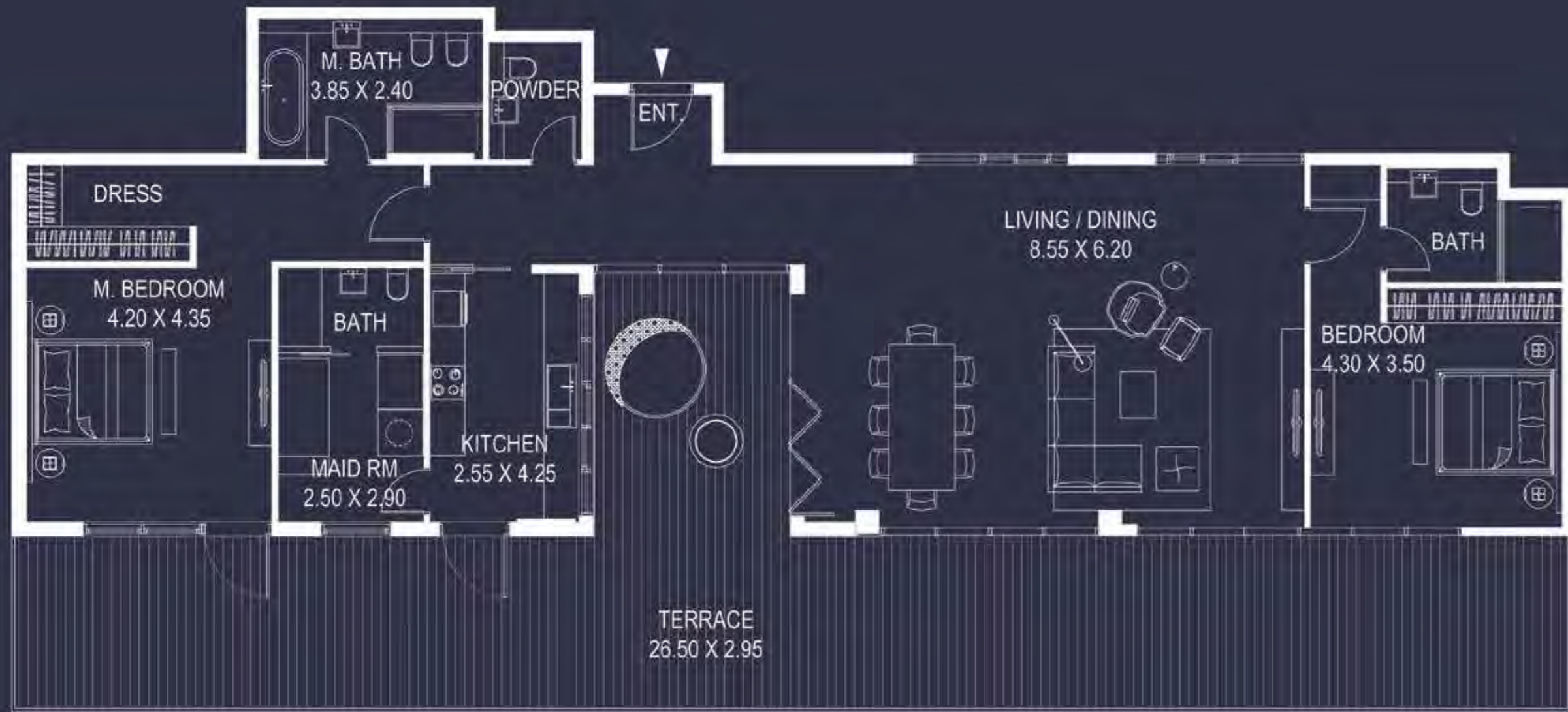
KEY PLAN

■ 2 Nos.
(4th Floor)



2 BED TYPE E					
Levels	Unit No.	Views	Area (sq.ft.)*		Total
			Unit	Balcony	
4	402	Neighbour	1,540.00	500.00	2,040.00
4	405	Neighbour	1,540.00	500.00	2,040.00
Total					2

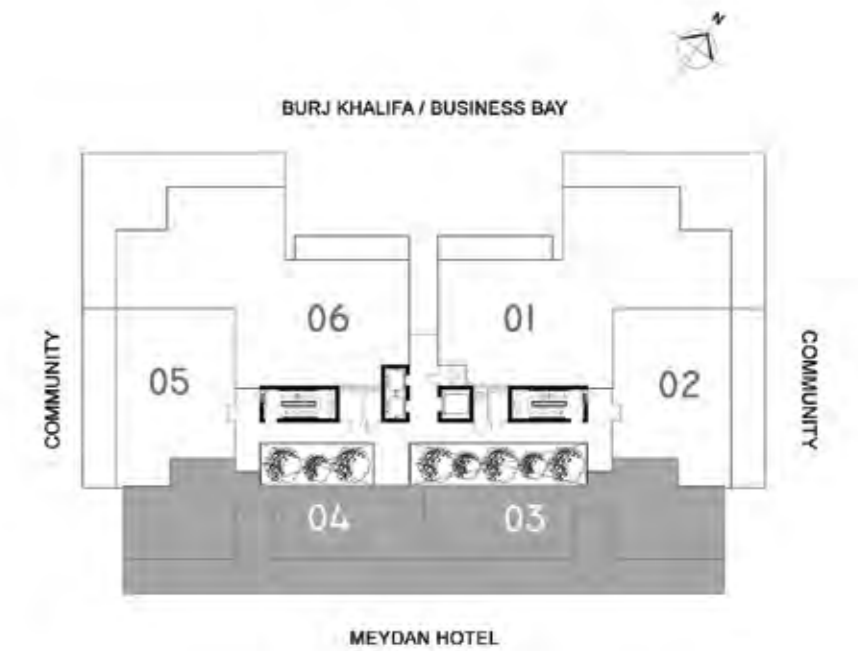
* Leasable area and Balcony location may vary from floor to floor.
* Dimension of the spaces, Furniture, Wardrobe and Bath Fixtures are indicative and may vary.



TWO BEDROOM APARTMENT - TYPE F

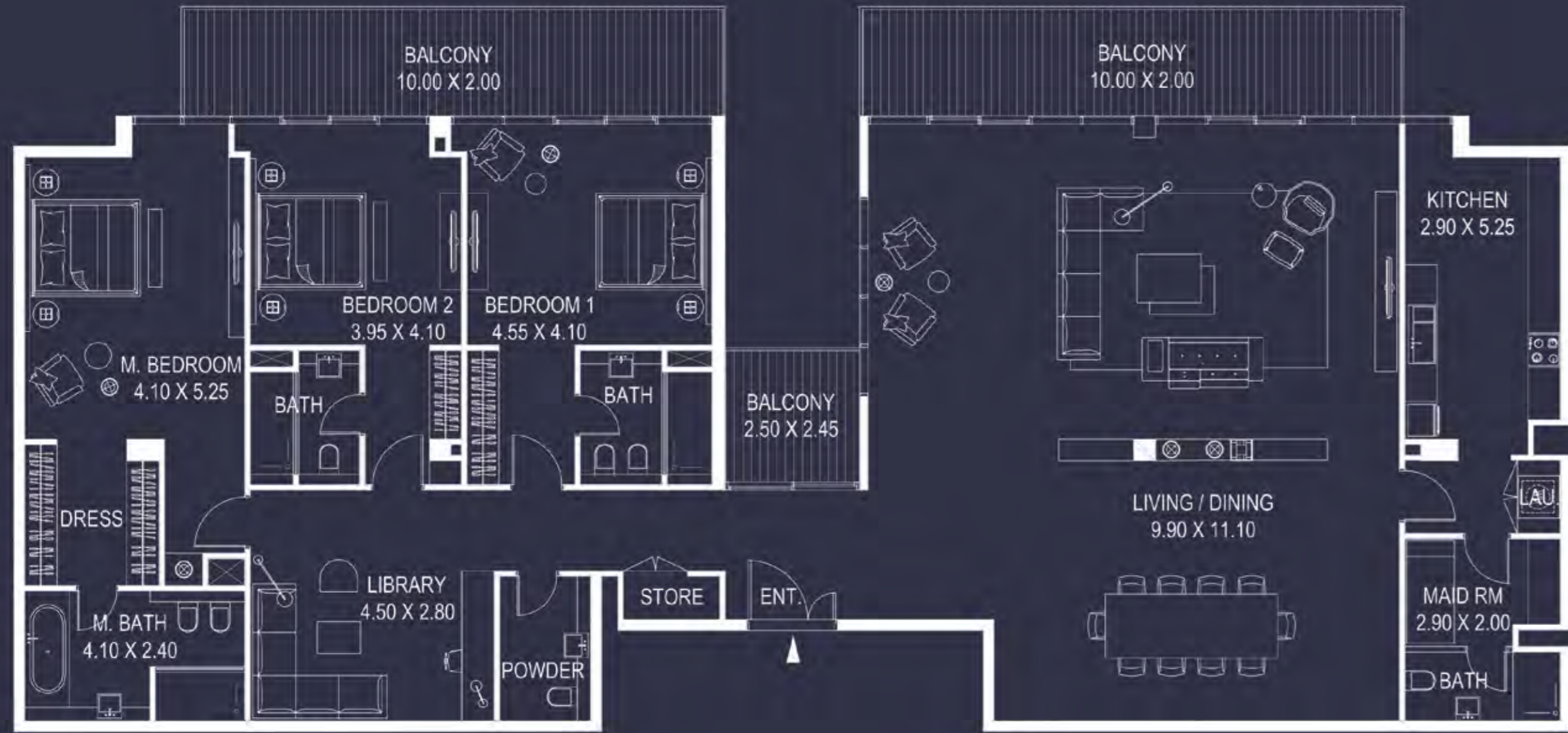
KEY PLAN

■ 2 Nos.
(4th Floor)



2 BED TYPE F					
Levels	Unit No.	Views	Area (sq.ft.)*		Total
			Unit	Balcony	
4	403	Meydan Hotel	1,805.00	1,010.00	2,815.00
4	404	Meydan Hotel	1,805.00	1,000.00	2,805.00
Total					2

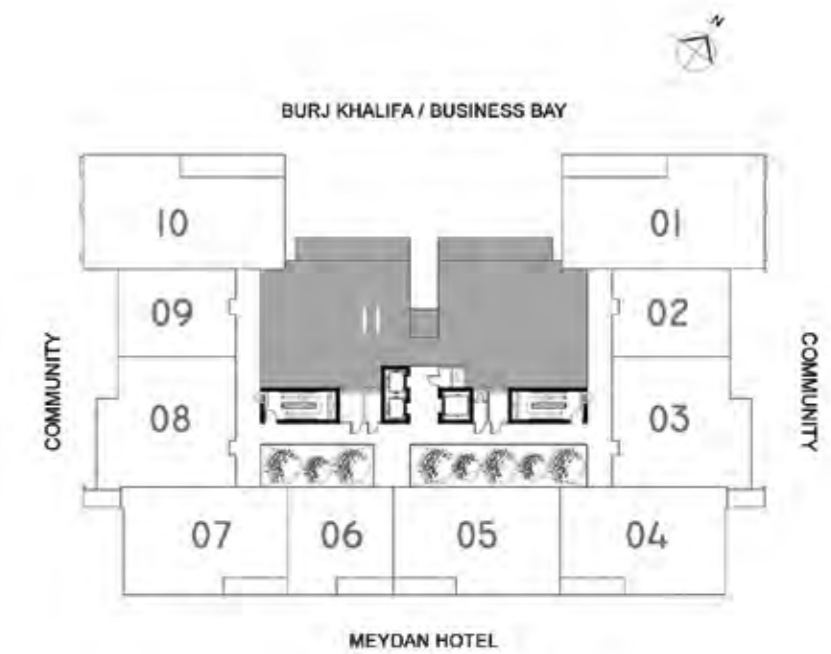
* Leasable area and Balcony location may vary from floor to floor.
* Dimension of the spaces, Furniture, Wardrobe and Bath Fixtures are indicative and may vary.



THREE BEDROOM APARTMENT - TYPE A

KEY PLAN

■ 2 Nos.
(2nd to 3rd Floor)



3 BED TYPE A					
Levels	Unit No.	Views	Area (sq.ft.)*		Total
			Unit	Balcony	
2	211	Burj / BB	3,095.00	525.00	3,620.00
3	311	Burj / BB	3,095.00	525.00	3,620.00
Total					2

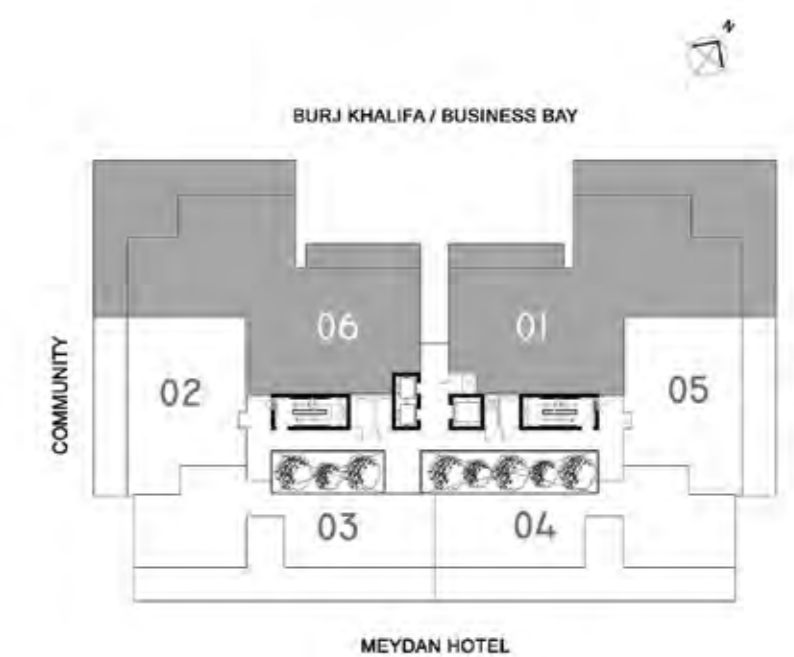
* Leasable area and Balcony location may vary from floor to floor.
* Dimension of the spaces, Furniture, Wardrobe and Bath Fixtures are indicative and may vary.



THREE BEDROOM APARTMENT - TYPE B

KEY PLAN

■ 2 Nos.
(4th Floor)



3 BED TYPE B					
Levels	Unit No.	Views	Area (sq.ft.)*		Total
			Unit	Balcony	
4	401	Burj / BB	3,050.00	1,295.00	4,345.00
4	406	Burj / BB	3,055.00	1,295.00	4,350.00
Total					2

* Leasable area and Balcony location may vary from floor to floor.
* Dimension of the spaces, Furniture, Wardrobe and Bath Fixtures are indicative and may vary.