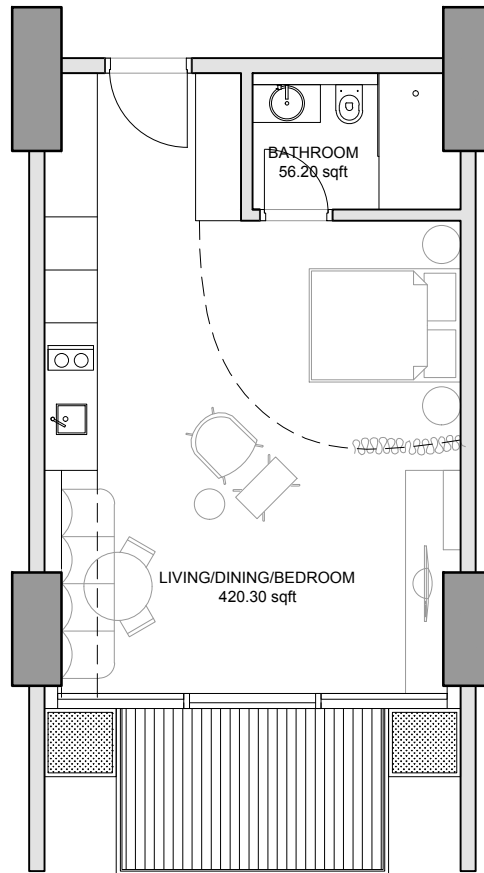


HAMENI RESIDENCES

ZAYA REAL ESTATE DEVELOPMENT LLC

STUDIO-TYPE A



APARTMENT

STUDIO-TYPE A

TOTAL AREA = 56.37 SQ.M. = 606.76 SQ.FT.

INDOOR AREA = 48.45 SQ.M. = 521.51 SQ.FT.

OUTDOOR AREA = 7.92 SQ.M. = 85.25 SQ.FT.

NUMBER OF UNITS = 94 NOS.

APARTMENT CODES

W 7 09 *	E 7 07 *	W 21 09
W 7 10 *	E 7 08 *	W 21 10
W 7 11 *	E 7 09 *	E 21 07
W 7 12 *	E 7 10 *	E 21 08
W 7 13 *	E 7 11 *	

* Repeated in 8th , 9th, 10th, 11th,
12th, 13th, 14th & 15th Floor.

0 1 2 3 4 5m
1:100

LAYOUT PLAN

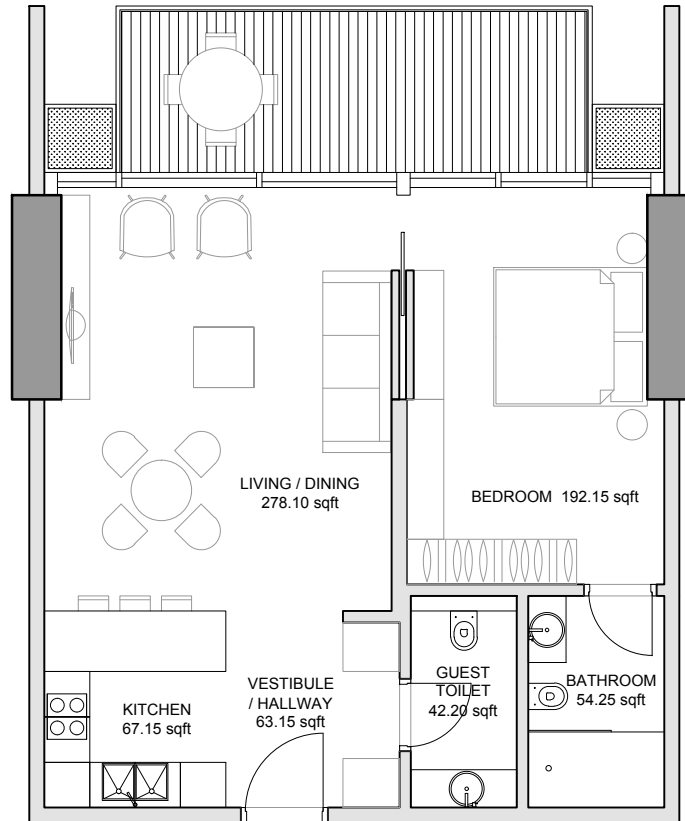
BUYER

SELLER

HAMENI RESIDENCES

ZAYA REAL ESTATE DEVELOPMENT LLC

1BR-TYPE A



APARTMENT

1BR-TYPE A

TOTAL AREA = 85.26 SQ.M. = 917.72 SQ.FT.

INDOOR AREA = 71.40 SQ.M. = 768.54 SQ.FT.

OUTDOOR AREA = 13.86 SQ.M. = 149.18 SQ.FT.

NUMBER OF UNITS = 109 NOS.

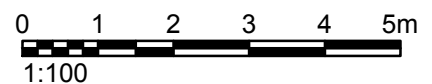
APARTMENT CODES

W 5 06	W 7 01 **	W 28 02	W 26 05 ***
W 6 01	W 7 06 **	E 28 02	E 26 03 ***
W 6 02 *	E 7 01 **	W 26 03 ***	E 26 04 ***
W 6 06	E 7 03 **	W 26 04 ***	E 26 05 ***

* Repeated in 8th, 10th, 12th, 14th, 16th, 18th, 20th, 22nd & 24th Floor.

** Repeated in 8th, 9th, 10th, 11th, 12th, 13th, 14th, 15nd, 16th, 17th, 18th, 19th, 20th, 21st, 22nd, 23rd, 24th & 25th Floor.

*** Repeated in 27th & 28th Floor



LAYOUT PLAN

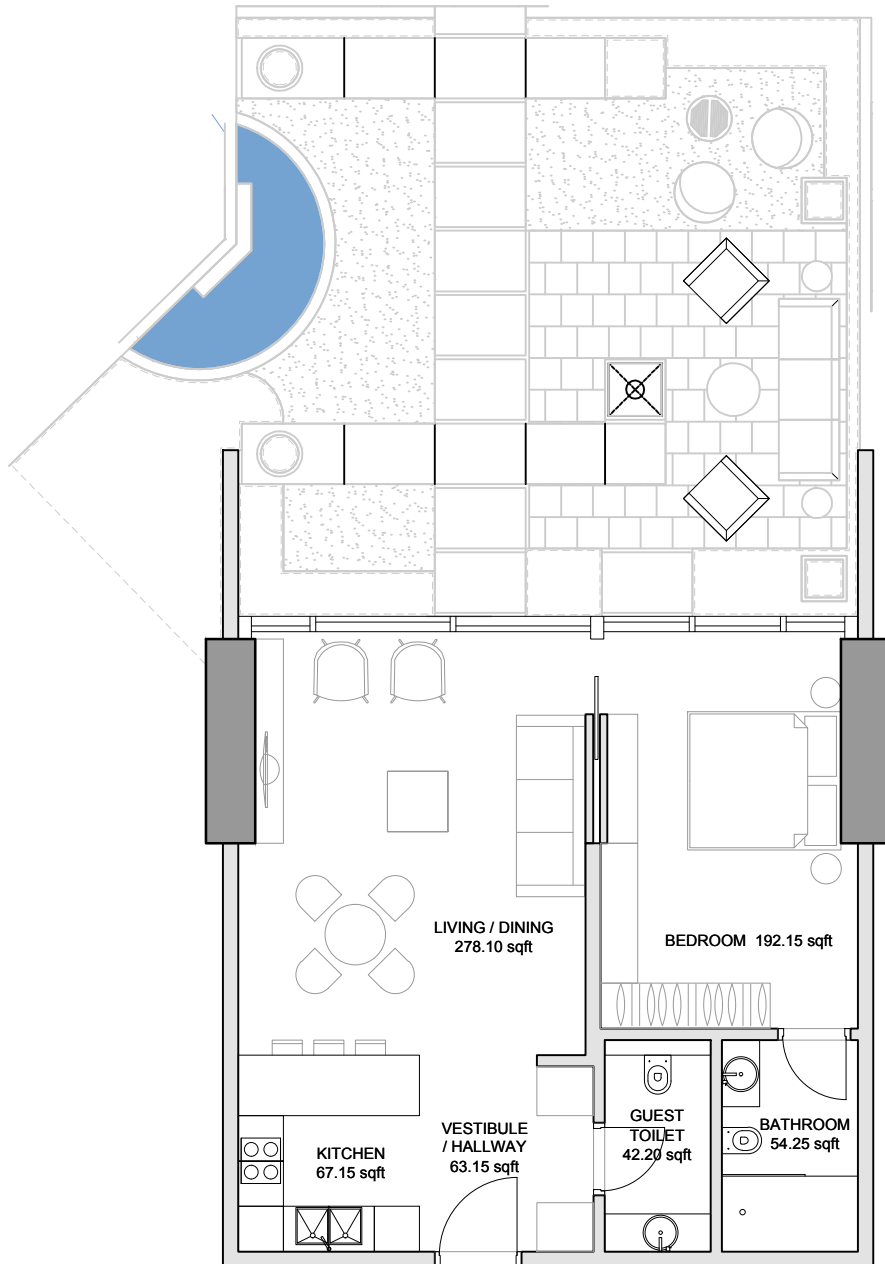
BUYER

SELLER

HAMENI RESIDENCES

ZAYA REAL ESTATE DEVELOPMENT LLC

1BR-TYPE A1



APARTMENT 1BR-TYPE A1

TOTAL AREA = 148 SQ.M. = 1593.05 SQ.FT.

INDOOR AREA = 71.40 SQ.M. = 768.54 SQ.FT.

OUTDOOR AREA = 75.68 SQ.M. = 814.64 SQ.FT.

NUMBER OF UNITS = 1 NOS.

APARTMENT CODES

W 5 01

0 1 2 3 4 5m
1:100

LAYOUT PLAN

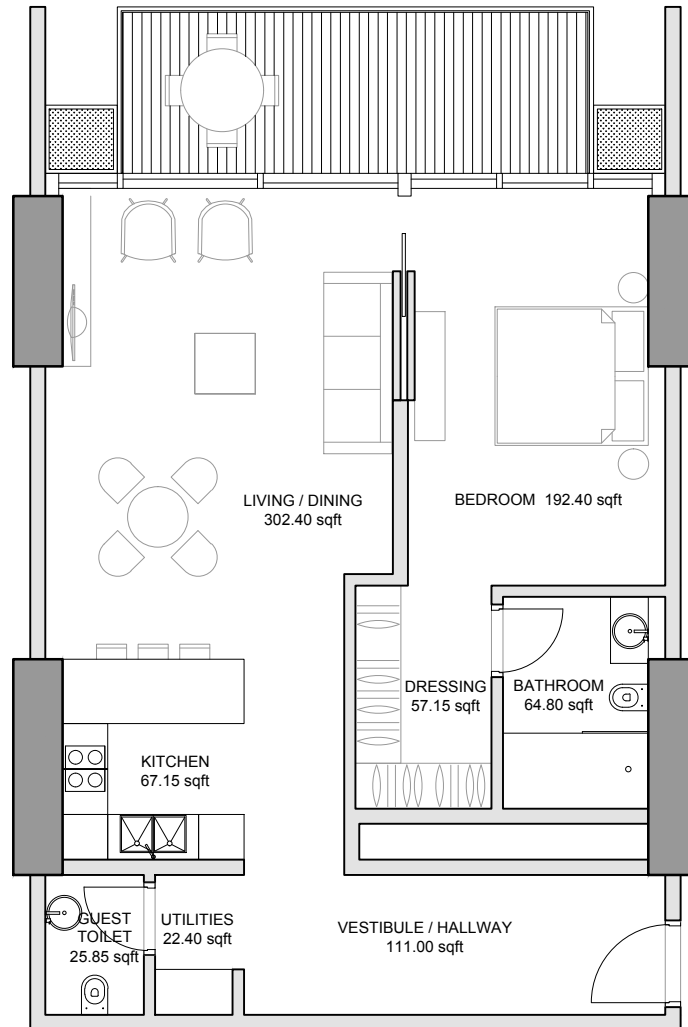
BUYER

SELLER

HAMENI RESIDENCES

ZAYA REAL ESTATE DEVELOPMENT LLC

1BR-TYPE B



APARTMENT

1BR-TYPE B

TOTAL AREA = 109.27 SQ.M. = 1176.16 SQ.FT.

INDOOR AREA = 95.41 SQ.M. = 1026.98 SQ.FT.

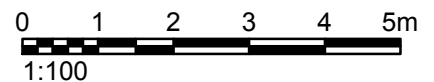
OUTDOOR AREA = 13.86 SQ.M. = 149.18 SQ.FT.

NUMBER OF UNITS = 10 NOS.

APARTMENT CODES

W 7 02 *

* Repeated in 9th, 11th, 13th, 15th, 17th,
19th, 21st, 23rd & 25th Floor.



LAYOUT PLAN

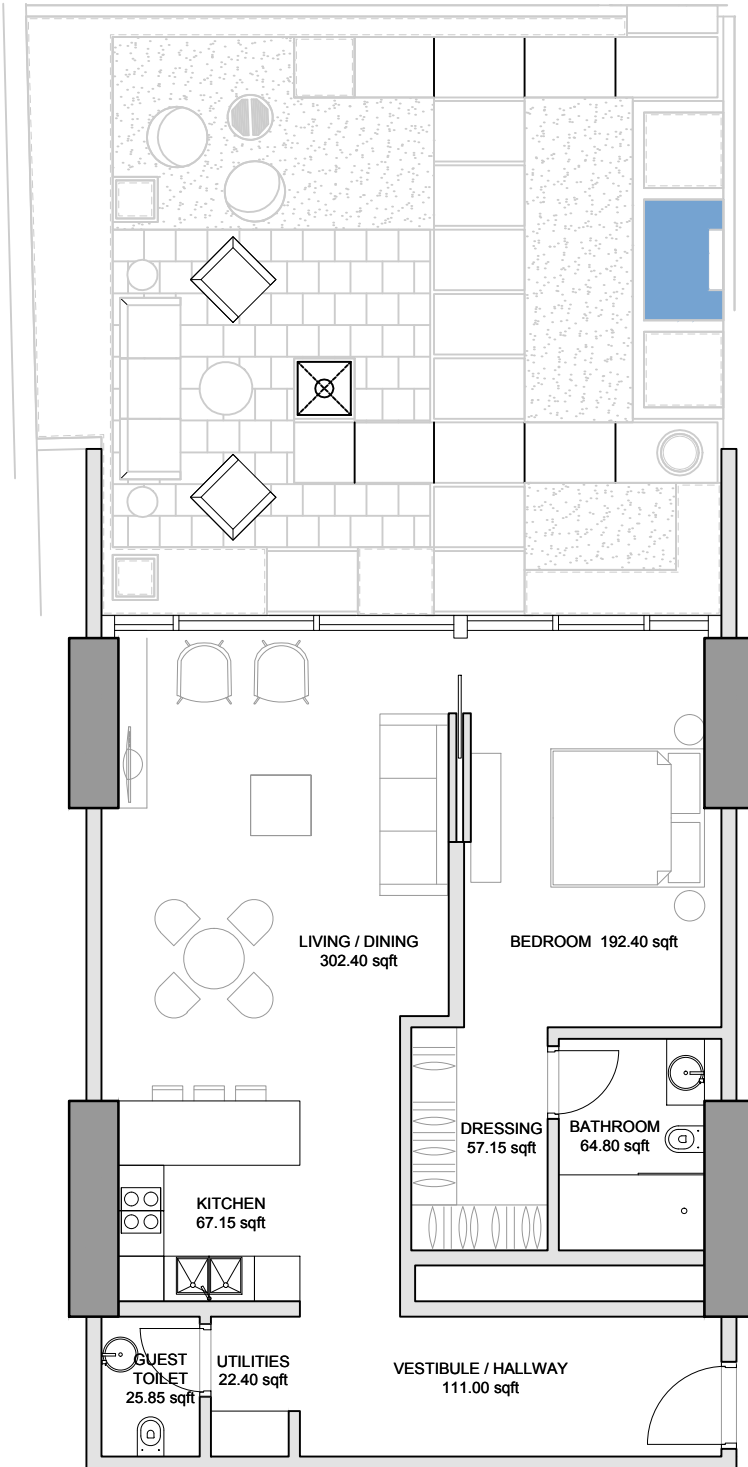
BUYER

SELLER

HAMENI RESIDENCES

ZAYA REAL ESTATE DEVELOPMENT LLC

1BR-TYPE B1



APARTMENT

1BR-TYPE B1

TOTAL AREA = 169.70 SQ.M. = 1826.63 SQ.FT.

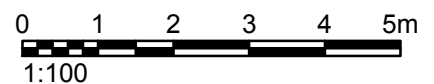
INDOOR AREA = 95.41 SQ.M. = 1026.98 SQ.FT.

OUTDOOR AREA = 74.47 SQ.M. = 801.60 SQ.FT.

NUMBER OF UNITS = 1 NOS.

APARTMENT CODES

W 5 02



LAYOUT PLAN

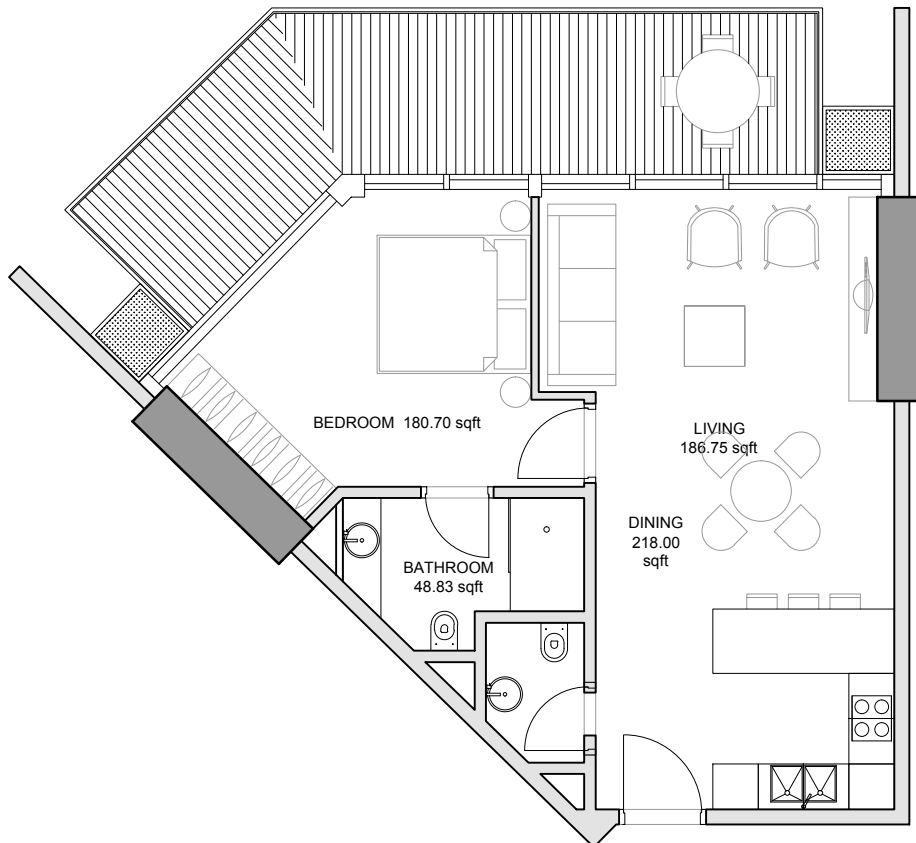
BUYER

SELLER

HAMENI RESIDENCES

ZAYA REAL ESTATE DEVELOPMENT LLC

1BR-TYPE C



APARTMENT

1BR-TYPE C

TOTAL AREA = 88.65 SQ.M. = 954.21 SQ.FT.

INDOOR AREA = 66.08 SQ.M. = 711.27 SQ.FT.

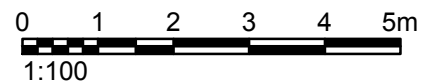
OUTDOOR AREA = 22.57 SQ.M. = 242.94 SQ.FT.

NUMBER OF UNITS = 21 NOS.

APARTMENT CODES

W 5 05 *

* Repeated in 6th, 7th, 8th, 9th, 10th, 11th,
12th, 13th, 14th, 15th, 16th, 17th, 18th, 19th,
20th, 21st, 22nd 23rd, 24th & 25th Floor.



LAYOUT PLAN

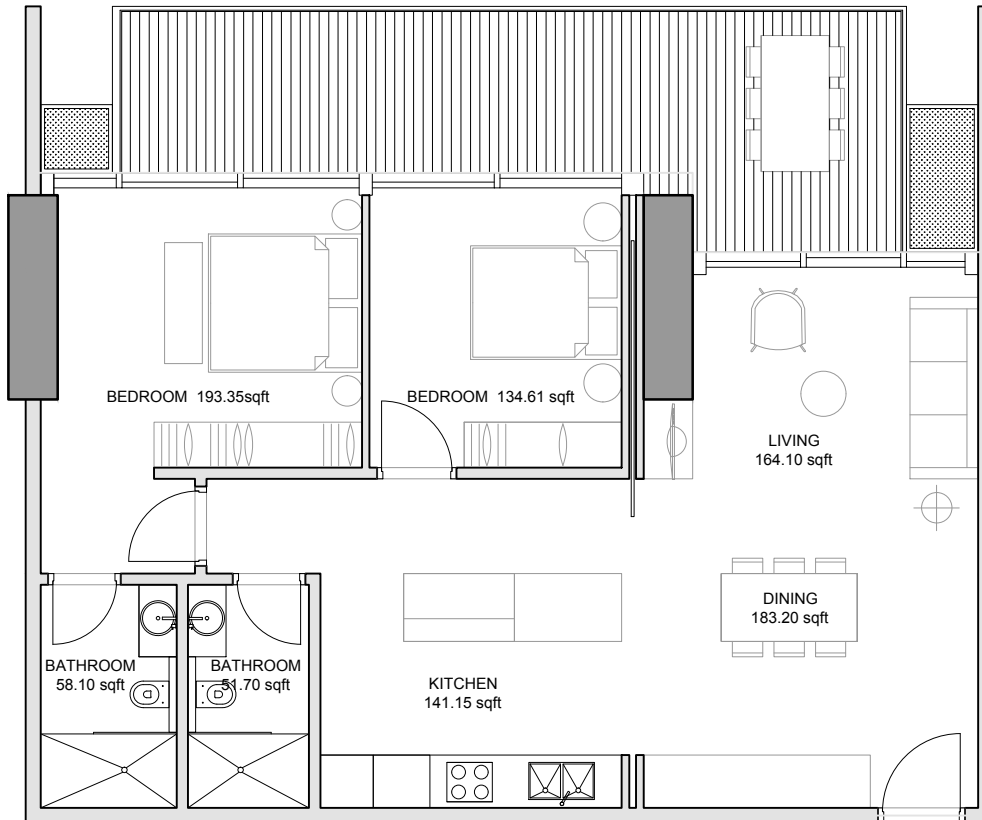
BUYER

SELLER

HAMENI RESIDENCES

ZAYA REAL ESTATE DEVELOPMENT LLC

2BR-TYPE A



APARTMENT

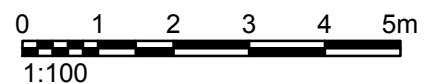
2BR-TYPE A

TOTAL AREA = 129.09 SQ.M. = 1389.50 SQ.FT.
INDOOR AREA = 103.03 SQ.M. = 1109.00 SQ.FT.
OUTDOOR AREA = 26.06 SQ.M. = 280.50 SQ.FT.
NUMBER OF UNITS = 62 NOS.

APARTMENT CODES

W 5 03	W 7 07 *
W 5 04	W 7 08 *
W 7 03 *	E 7 05 *
W 7 04 *	E 7 06 *

* Repeated in 9th, 11th, 13th, 15th, 17th,
19th, 21st, 23rd & 25th Floor.



LAYOUT PLAN

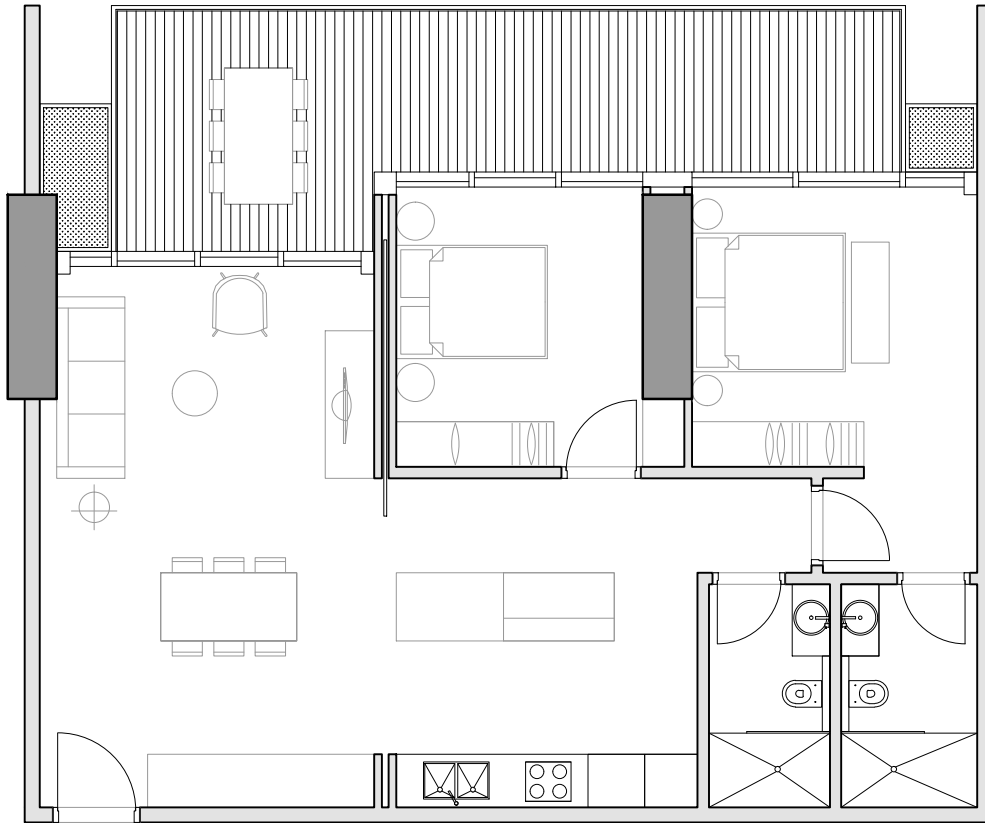
BUYER

SELLER

HAMENI RESIDENCES

ZAYA REAL ESTATE DEVELOPMENT LLC

2BR-TYPE B



APARTMENT

2BR-TYPE B

TOTAL AREA = 129.08 SQ.M. = 1389.39 SQ.FT.

INDOOR AREA = 102.34 SQ.M. = 1101.57 SQ.FT.

OUTDOOR AREA = 26.74 SQ.M. = 287.82 SQ.FT.

NUMBER OF UNITS = 45 NOS.

APARTMENT CODES

W 6 04	W 8 08	**
W 8 04	E 8 05	*
W 8 07	E 8 06	**

* Repeated in 10th, 12th, 14th, 16th, 18th, 20th, 22nd & 24th Floor.

** Repeated in 10th, 12th, 14th, 16th, 18th, 22nd & 24th Floor.

0 1 2 3 4 5m
1:100

LAYOUT PLAN

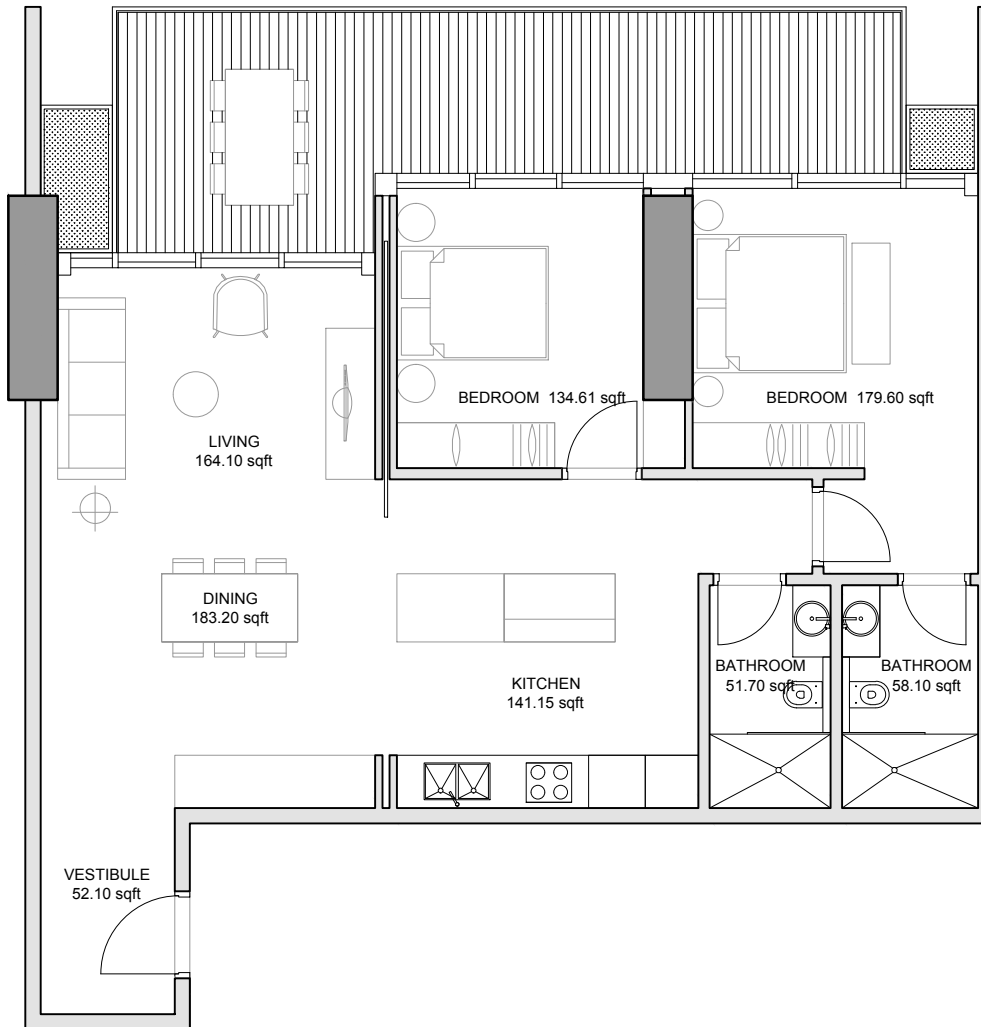
BUYER

SELLER

HAMENI RESIDENCES

ZAYA REAL ESTATE DEVELOPMENT LLC

2BR-TYPE B1



APARTMENT

2BR-TYPE B1

TOTAL AREA = 134.47 SQ.M. = 1447.41 SQ.FT.

INDOOR AREA = 107.73 SQ.M. = 1159.59 SQ.FT.

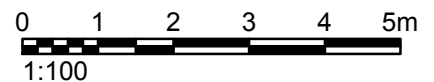
OUTDOOR AREA = 26.74 SQ.M. = 287.82 SQ.FT.

NUMBER OF UNITS = 09 NOS.

APARTMENT CODES

W 6 03 *

* Repeated in 8th, 12th, 14th, 16th, 18th,
20th, 22nd & 24th Floor.



LAYOUT PLAN

BUYER

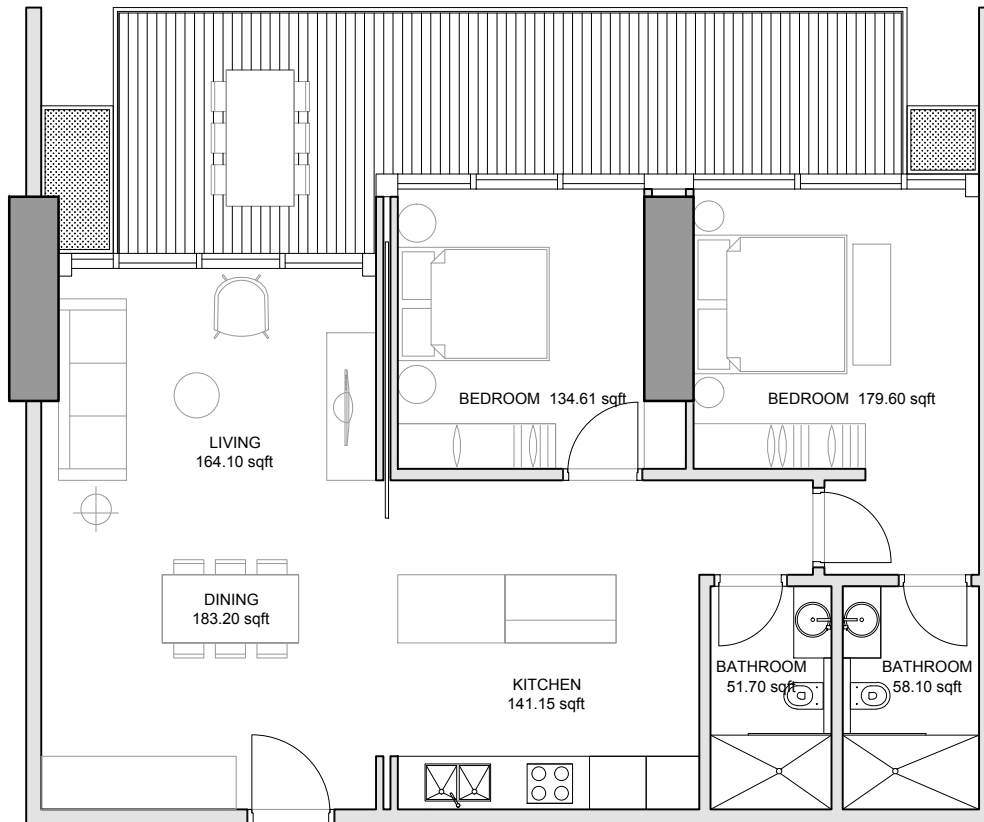
SELLER

HAMENI RESIDENCES

ZAYA REAL ESTATE DEVELOPMENT LLC

updated
25/05/2014

2BR-TYPE B2



APARTMENT

2BR-TYPE B2

TOTAL AREA = 129.08 SQ.M. = 1389.39 SQ.FT.

INDOOR AREA = 102.34 SQ.M. = 1101.57 SQ.FT.

OUTDOOR AREA = 26.74 SQ.M. = 287.82 SQ.FT.

NUMBER OF UNITS = 45 NOS.

APARTMENT CODES

W 10 03

LAYOUT PLAN

0 1 2 3 4 5m
1:100

BUYER

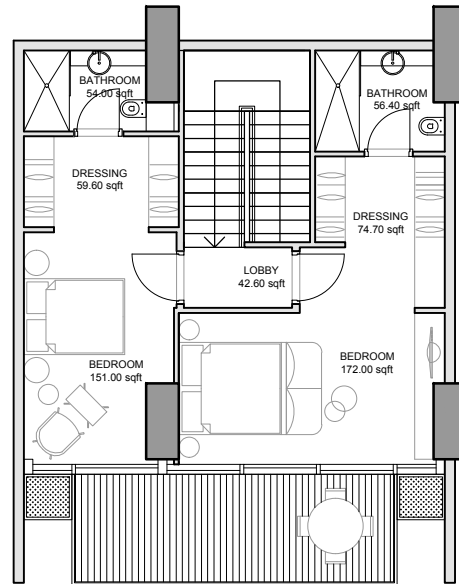
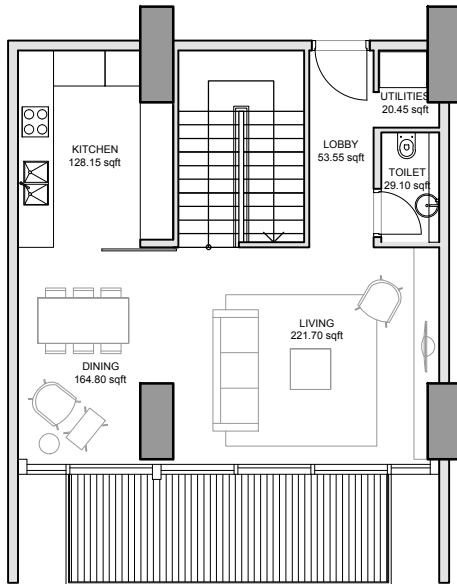
SELLER

HAMENI RESIDENCES

ZAYA REAL ESTATE DEVELOPMENT LLC

updated
26/05/2014

2BR DUPLEX-TYPE A



APARTMENT

2BR DUPLEX-TYPE A

TOTAL AREA = 173.73 SQ.M. = 1870.00 SQ.FT.

INDOOR AREA = 145.35 SQ.M. = 1564.53 SQ.FT.

OUTDOOR AREA = 28.38 SQ.M. = 305.47 SQ.FT.

NUMBER OF UNITS = 28 NOS.

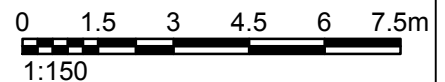
APARTMENT CODES

W 16 09 *	W 26 06 ***	W 20 08
E 16 07 *	W 26 07 ***	E 20 06
W 16 10 **	E 26 06 ***	
E 16 08 **	E 26 07 ***	

* Repeated in 18th, 20th, 22nd, 24th Floor.

** Repeated in 18th, 22nd, 24th Floor.

*** Repeated in 28th Floor



LAYOUT PLAN

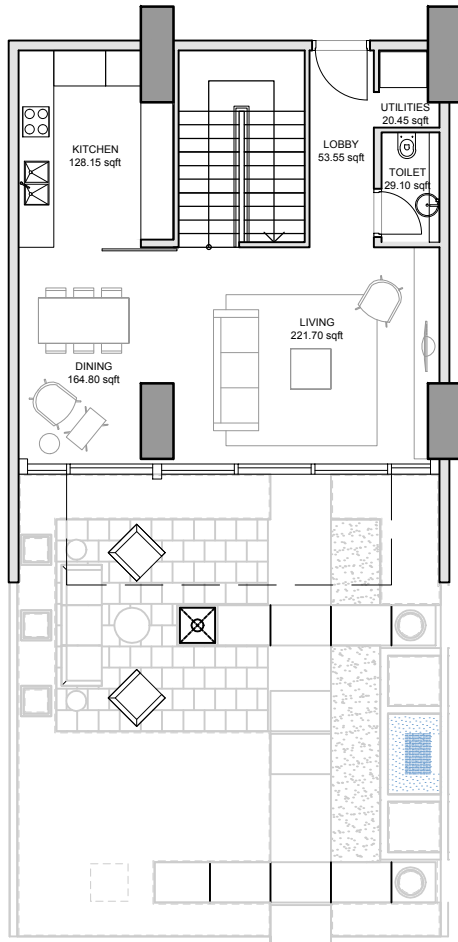
BUYER

SELLER

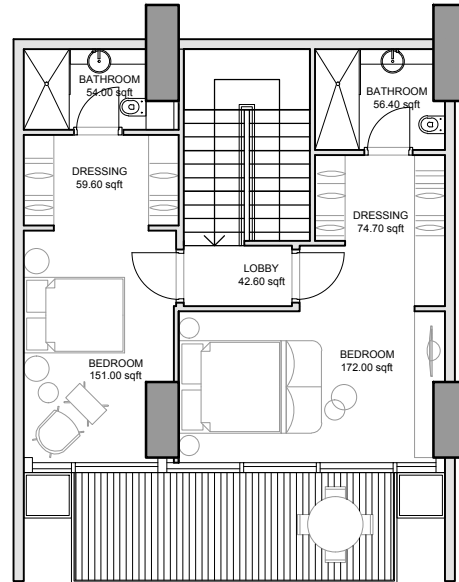
HAMENI RESIDENCES

ZAYA REAL ESTATE DEVELOPMENT LLC

2BR DUPLEX-TYPE A1,A2



LOWER LEVEL



UPPER LEVEL

APARTMENT VARIATION

2BR DUPLEX-TYPE A1

TOTAL AREA = 238.35 SQ.M. = 2565.57 SQ.FT.

INDOOR AREA = 145.35 SQ.M. = 1564.53 SQ.FT.

OUTDOOR AREA = 95.10 SQ.M. = 1,023.68 SQ.FT.

NUMBER OF UNITS = 4 NOS.

APARTMENT CODES

W 5 07

E 5 01

W 5 08

E 5 02

APARTMENT VARIATION

2BR DUPLEX-TYPE A2

TOTAL AREA = 254.19 SQ.M. = 2736.07 SQ.FT.

INDOOR AREA = 145.35 SQ.M. = 1564.53 SQ.FT.

OUTDOOR AREA = 110.44 SQ.M. = 1,188.80 SQ.FT.

NUMBER OF UNITS = 1 NOS.

APARTMENT CODES

W 5 09

0 1.5 3 4.5 6 7.5m

1:150

LAYOUT PLAN

BUYER

SELLER

HAMENI RESIDENCES

ZAYA REAL ESTATE DEVELOPMENT LLC

2BR DUPLEX-TYPE B

APARTMENT

2BR DUPLEX-TYPE B

TOTAL AREA = 294.27 SQ.M. = 3167.49 SQ.FT.

INDOOR AREA = 148.14 SQ.M. = 1594.56 SQ.FT.

OUTDOOR AREA = 146.13 SQ.M. = 1572.93 SQ.FT.

NUMBER OF UNITS = 4 NOS.

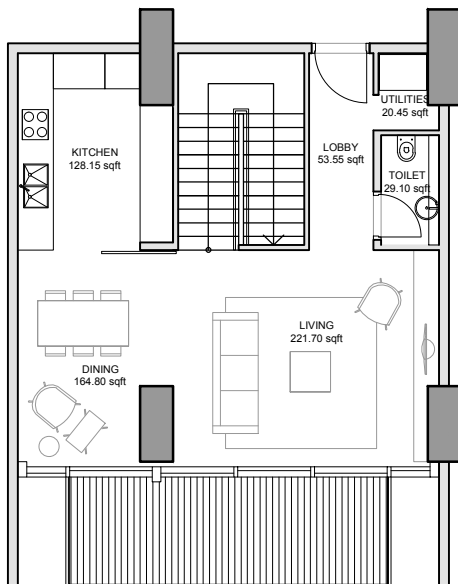
APARTMENT CODES

W 30 02

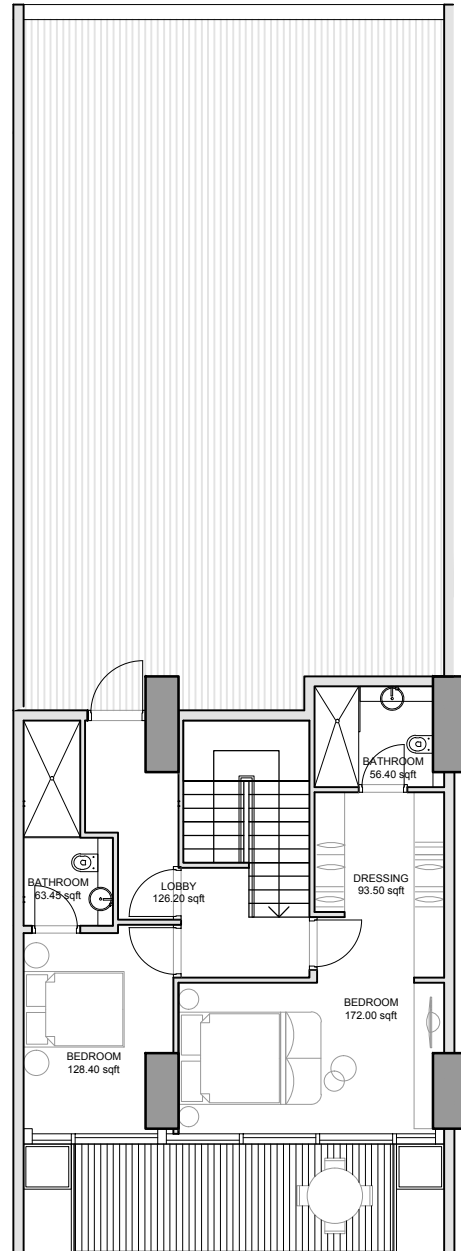
E 30 02

W 30 03

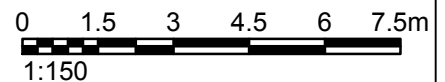
E 30 03



LOWER LEVEL



UPPER LEVEL



LAYOUT PLAN

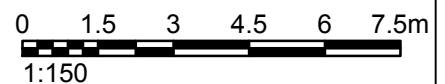
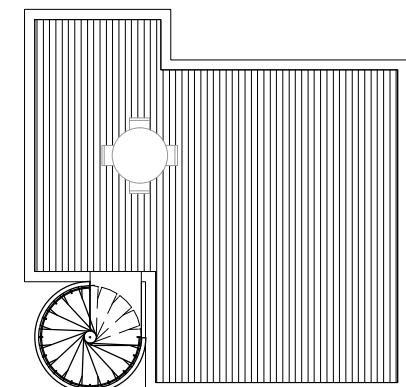
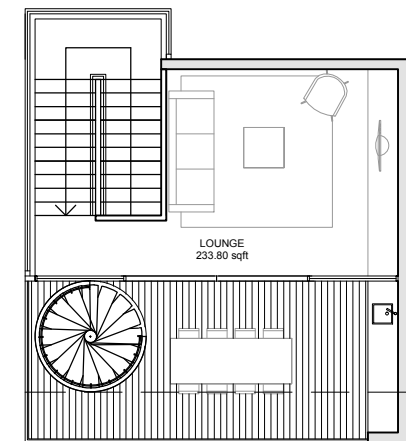
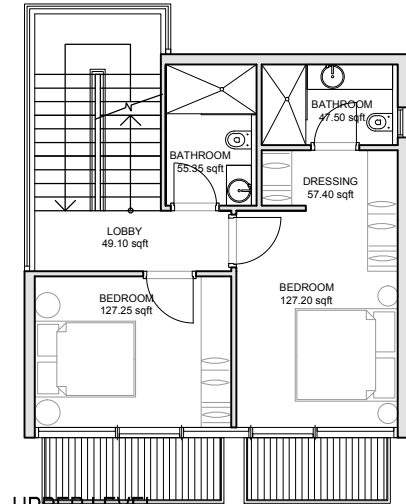
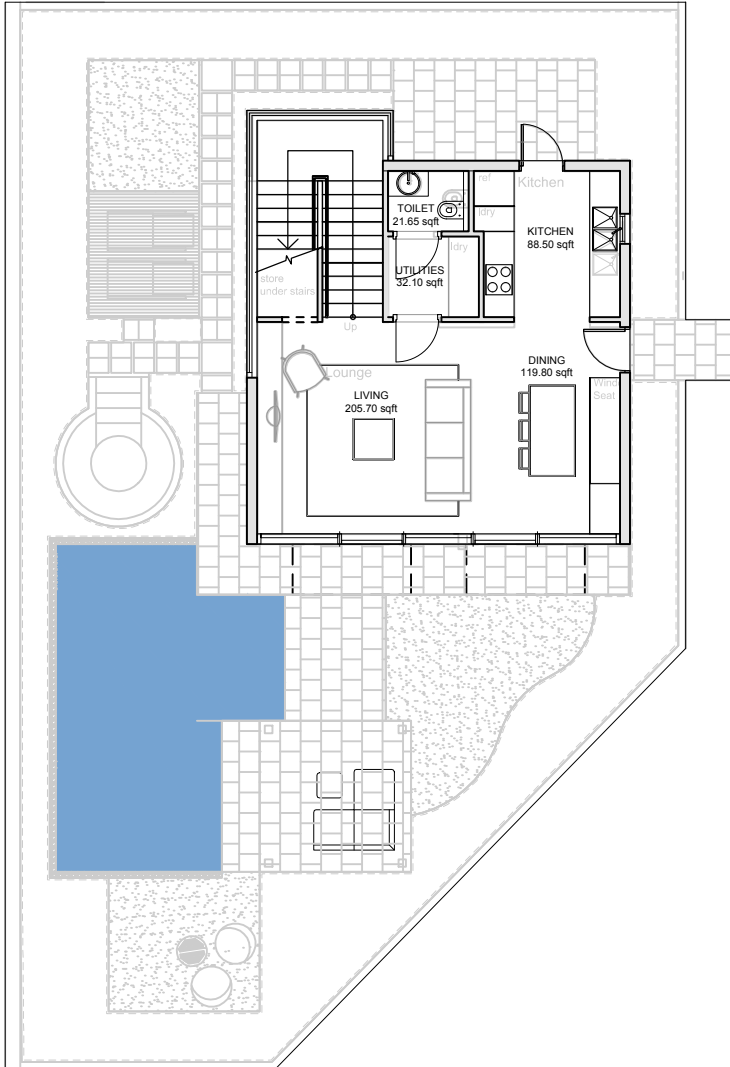
BUYER

SELLER

HAMENI RESIDENCES

ZAYA REAL ESTATE DEVELOPMENT LLC

VILLA 2BR-TYPE A,A1,A2,A3



LAYOUT PLAN

BUYER

SELLER

HAMENI RESIDENCES

ZAYA REAL ESTATE DEVELOPMENT LLC

APARTMENT

2BR VILLA-TYPE A

TOTAL AREA = 399.73 SQ.M. = 4302.64 SQ.FT.

INDOOR AREA = 157.66 SQ.M. = 1697.03 SQ.FT.

OUTDOOR AREA = 250.60 SQ.M. = 2,697.45 SQ.FT.

NUMBER OF UNITS = 1 NOS.

APARTMENT CODES

E 5 04

APARTMENT VARIATION

2BR VILLA-TYPE A1

TOTAL AREA = 406.66 SQ.M. = 4377.24 SQ.FT.

INDOOR AREA = 157.66 SQ.M. = 1697.03 SQ.FT.

OUTDOOR AREA = 258.40 SQ.M. = 2,781.50 SQ.FT.

NUMBER OF UNITS = 1 NOS.

APARTMENT CODES

E 5 05

APARTMENT VARIATION

2BR VILLA-TYPE A2

TOTAL AREA = 422.94 SQ.M. = 4552.48 SQ.FT.

INDOOR AREA = 157.66 SQ.M. = 1697.03 SQ.FT.

OUTDOOR AREA = 274.28 SQ.M. = 2,952.43 SQ.FT.

NUMBER OF UNITS = 1 NOS.

APARTMENT CODES

W 5 11

APARTMENT VARIATION

2BR VILLA-TYPE A3

TOTAL AREA = 409.04 SQ.M. = 4402.86 SQ.FT.

INDOOR AREA = 157.66 SQ.M. = 1697.03 SQ.FT.

OUTDOOR AREA = 260.30 SQ.M. = 2,801.95 SQ.FT.

NUMBER OF UNITS = 1 NOS.

APARTMENT CODES

W 5 10

LAYOUT PLAN

0 1.5 3 4.5 6 7.5m
1:150

BUYER

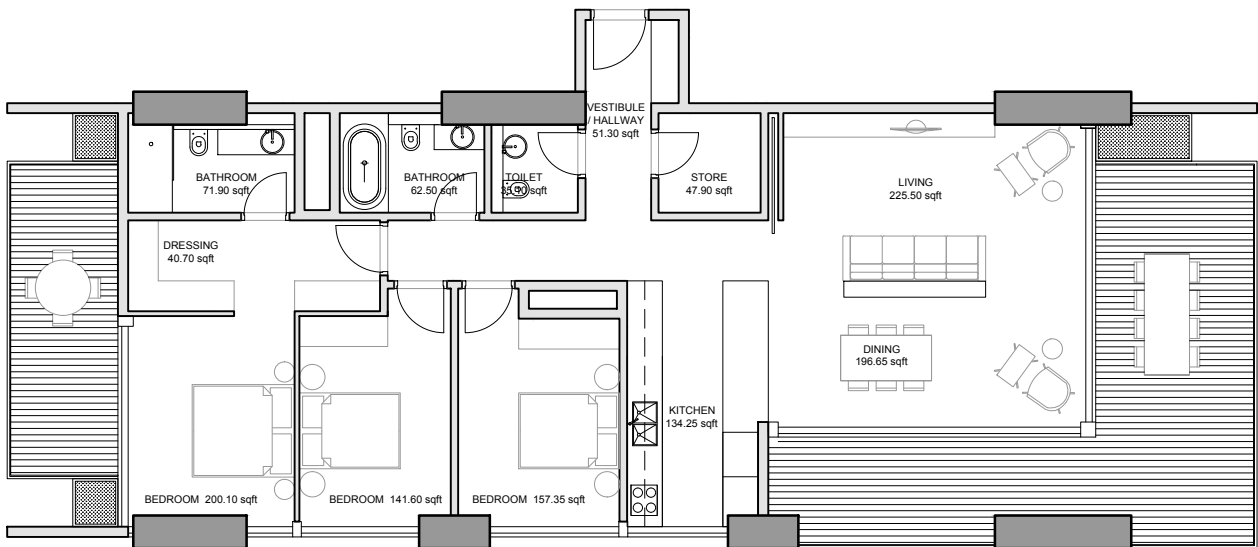
SELLER

HAMENI RESIDENCES

ZAYA REAL ESTATE DEVELOPMENT LLC

Updated
26/05/2014

3BR-TYPE A



APARTMENT

3BR-TYPE A

TOTAL AREA = 208.95 SQ.M. = 2249.11 SQ.FT.

INDOOR AREA = 156.22 SQ.M. = 1681.53 SQ.FT.

OUTDOOR AREA = 52.73 SQ.M. = 567.58 SQ.FT.

NUMBER OF UNITS = 19 NOS.

APARTMENT CODES

E 7 02 *

* Repeated in 8th, 9th, 10th, 11th, 12th,
13th, 14th, 15th, 16th, 17th, 18th, 19th, 20th,
21st, 22nd, 23rd, 24th & 25th Floor.

LAYOUT PLAN

0 1.5 3 4.5 6 7.5m
1:150

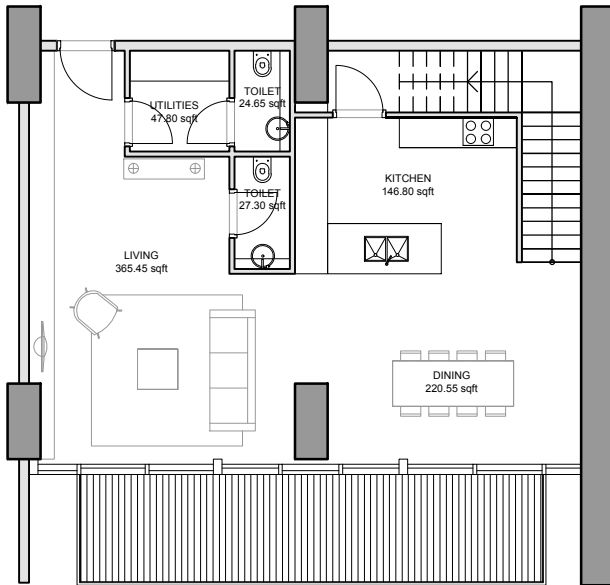
BUYER

SELLER

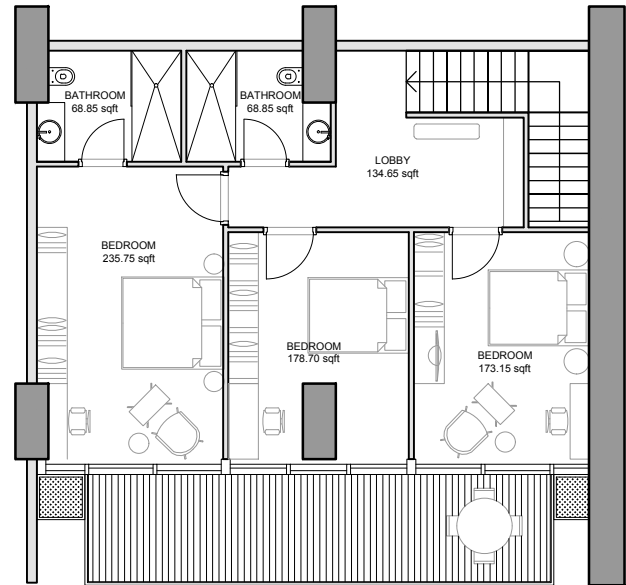
HAMENI RESIDENCES

ZAYA REAL ESTATE DEVELOPMENT LLC

3BR DUPLEX-TYPE A



LOWER LEVEL



UPPER LEVEL

APARTMENT

3BR DUPLEX-TYPE A

TOTAL AREA = 233.58 SQ.M. = 2514.22 SQ.FT.

INDOOR AREA = 192.66 SQ.M. = 2073.77 SQ.FT.

OUTDOOR AREA = 40.92 SQ.M. = 440.45 SQ.FT.

NUMBER OF UNITS = 12 NOS.

APARTMENT CODES

W 16 11* W 26 08**
E 16 09* E 26 08**

* Repeated in 18th, 22nd, 24thFloor.

** Repeated in 28thFloor.

0 1.5 3 4.5 6 7.5m
1:150

LAYOUT PLAN

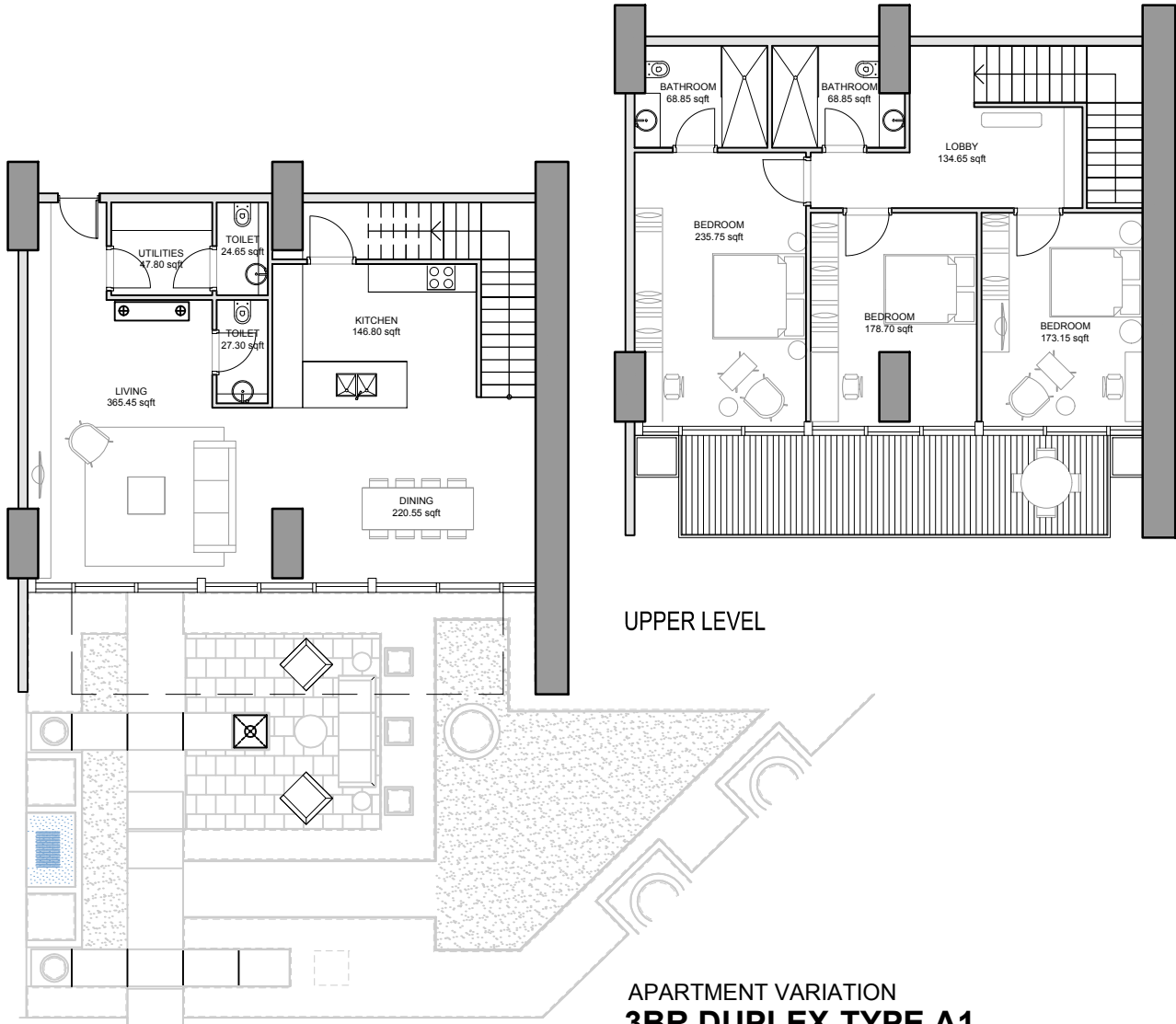
BUYER

SELLER

HAMENI RESIDENCES

ZAYA REAL ESTATE DEVELOPMENT LLC

3BR DUPLEX-TYPE A1



UPPER LEVEL

APARTMENT VARIATION

3BR DUPLEX-TYPE A1

TOTAL AREA = 343.16 SQ.M. = 3693.73 SQ.FT.

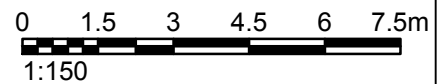
INDOOR AREA = 192.66 SQ.M. = 2073.77 SQ.FT.

OUTDOOR AREA = 148.97 SQ.M. = 1,603.55 SQ.FT.

NUMBER OF UNITS = 1 NOS.

APARTMENT CODES

E 5 03



LAYOUT PLAN

BUYER

SELLER

HAMENI RESIDENCES

ZAYA REAL ESTATE DEVELOPMENT LLC

3BR DUPLEX-TYPE B

APARTMENT

3BR DUPLEX-TYPE B

TOTAL AREA = 382.67 SQ.M. = 4119.02 SQ.FT.

INDOOR AREA = 198.47 SQ.M. = 2136.31 SQ.FT.

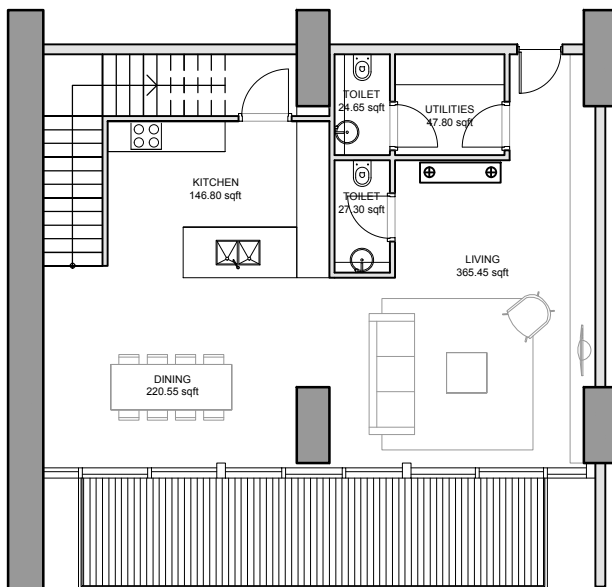
OUTDOOR AREA = 184.60 SQ.M. = 1,987.10 SQ.FT.

NUMBER OF UNITS = 2 NOS.

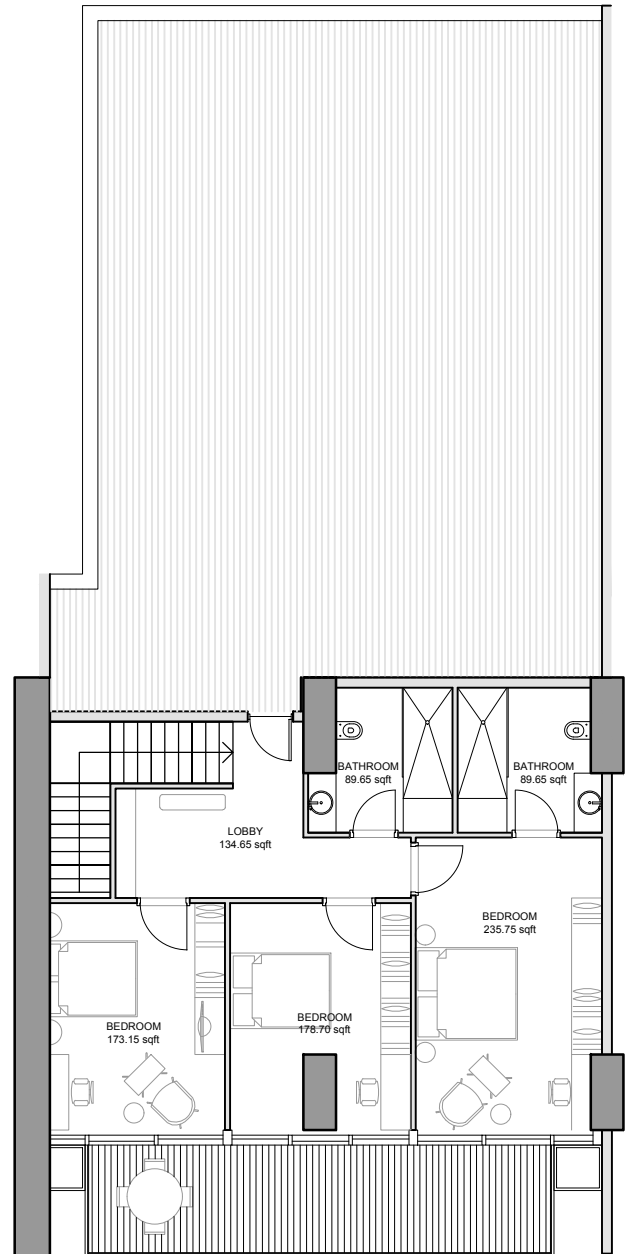
APARTMENT CODES

W 30 04

E 30 04

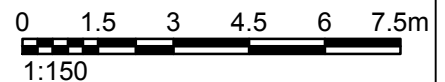


LOWER LEVEL



UPPER LEVEL

LAYOUT PLAN



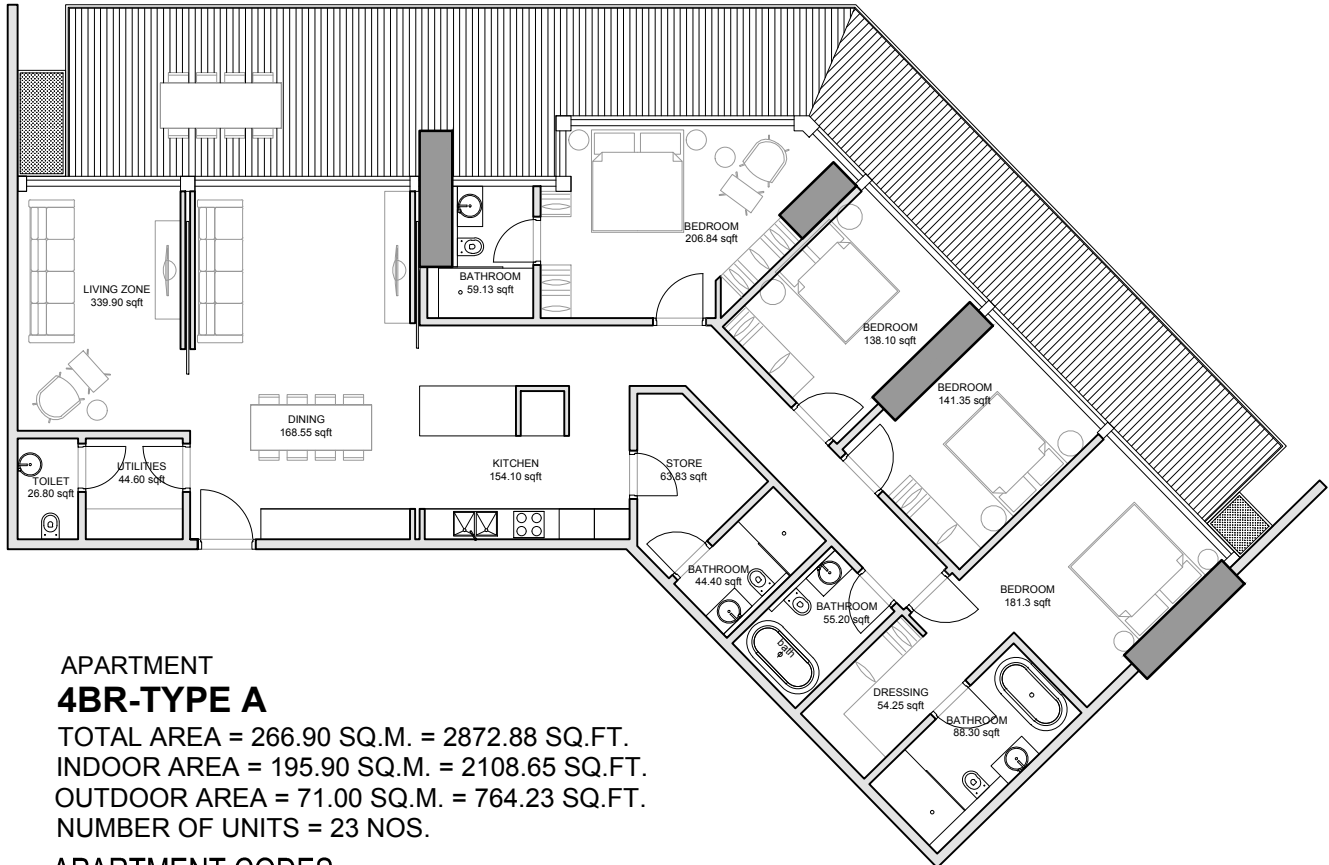
BUYER

SELLER

HAMENI RESIDENCES

ZAYA REAL ESTATE DEVELOPMENT LLC

4BR-TYPE A



APARTMENT

4BR-TYPE A

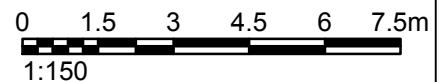
TOTAL AREA = 266.90 SQ.M. = 2872.88 SQ.FT.
INDOOR AREA = 195.90 SQ.M. = 2108.65 SQ.FT.
OUTDOOR AREA = 71.00 SQ.M. = 764.23 SQ.FT.
NUMBER OF UNITS = 23 NOS.

APARTMENT CODES

- E 7 04 *
- W 26 02 **
- E 26 02 **

* Repeated in 8th, 9th, 10th, 11th, 12th, 13th, 14th, 15th, 16th, 17th, 18th, 19th, 20th, 21st, 22nd, 23rd, 24th, 25th Floor.

** Repeated in 27th Floor.



LAYOUT PLAN

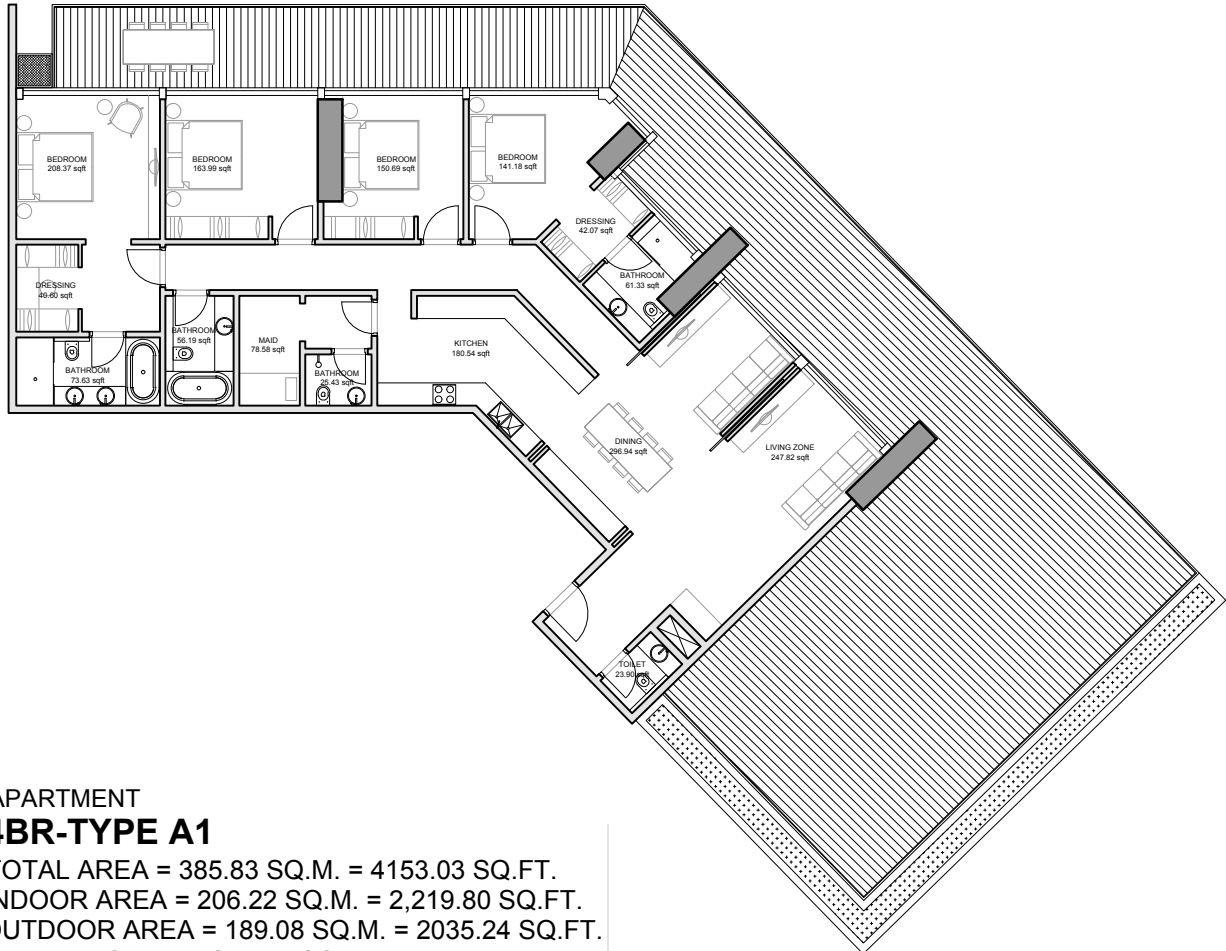
BUYER

SELLER

HAMENI RESIDENCES

ZAYA REAL ESTATE DEVELOPMENT LLC

4BR-TYPE A1



APARTMENT 4BR-TYPE A1

TOTAL AREA = 385.83 SQ.M. = 4153.03 SQ.FT.
INDOOR AREA = 206.22 SQ.M. = 2,219.80 SQ.FT.
OUTDOOR AREA = 189.08 SQ.M. = 2035.24 SQ.FT.
NUMBER OF UNITS = 2 NOS.

APARTMENT CODES

W 29 01

E 29 01

0 2 4 6 8 10m
1:200

LAYOUT PLAN

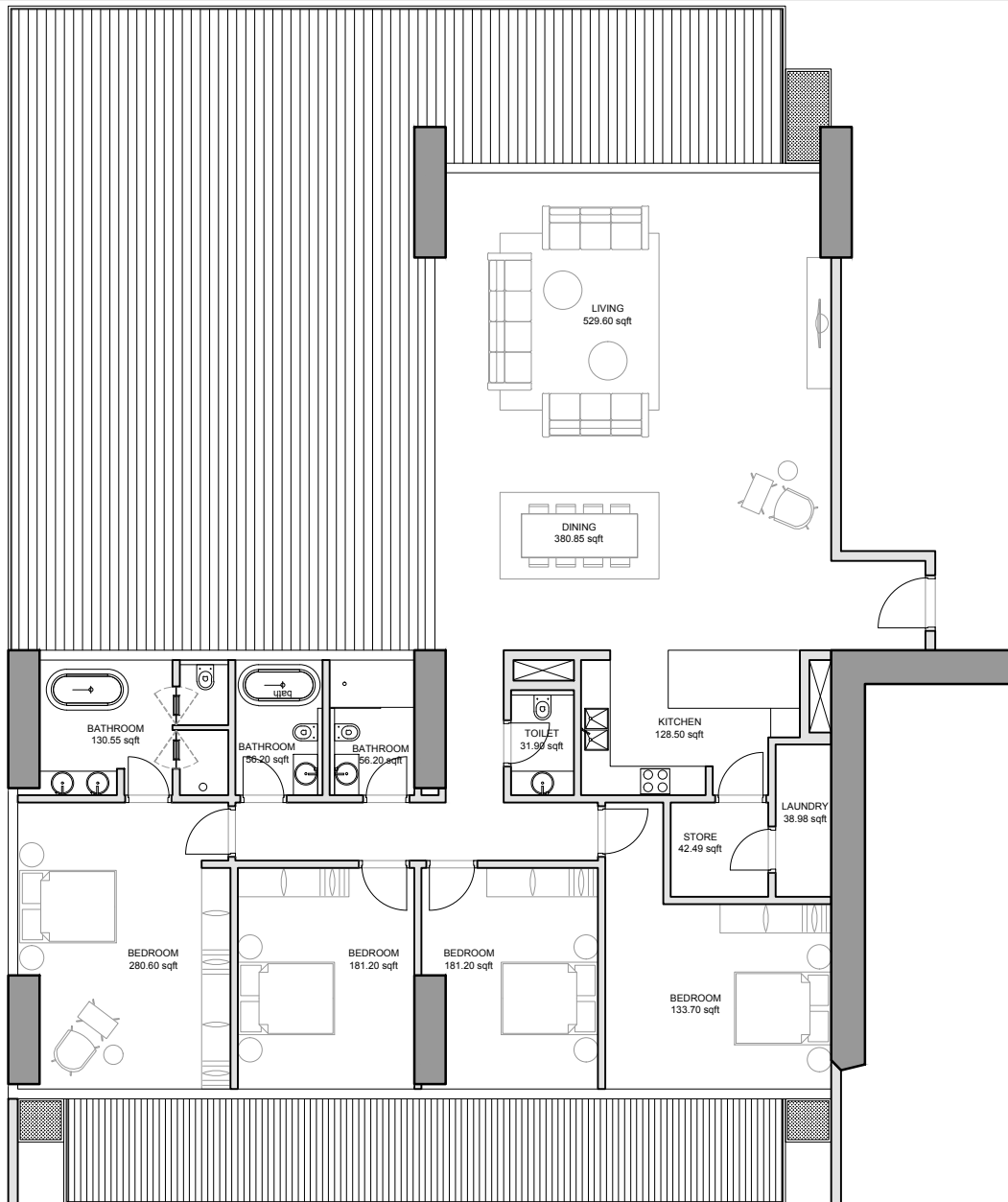
BUYER

SELLER

HAMENI RESIDENCES

ZAYA REAL ESTATE DEVELOPMENT LLC

4BR-TYPE B



APARTMENT

4BR-TYPE B

TOTAL AREA = 415.88 SQ.M. = 4476.48 SQ.FT.

INDOOR AREA = 244.40 SQ.M. = 2630.69 SQ.FT.

OUTDOOR AREA = 171.48 SQ.M. = 1845.79 SQ.FT.

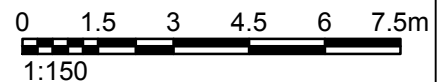
NUMBER OF UNITS = 2 NOS.

APARTMENT CODES

W 26 01

E 26 01

LAYOUT PLAN



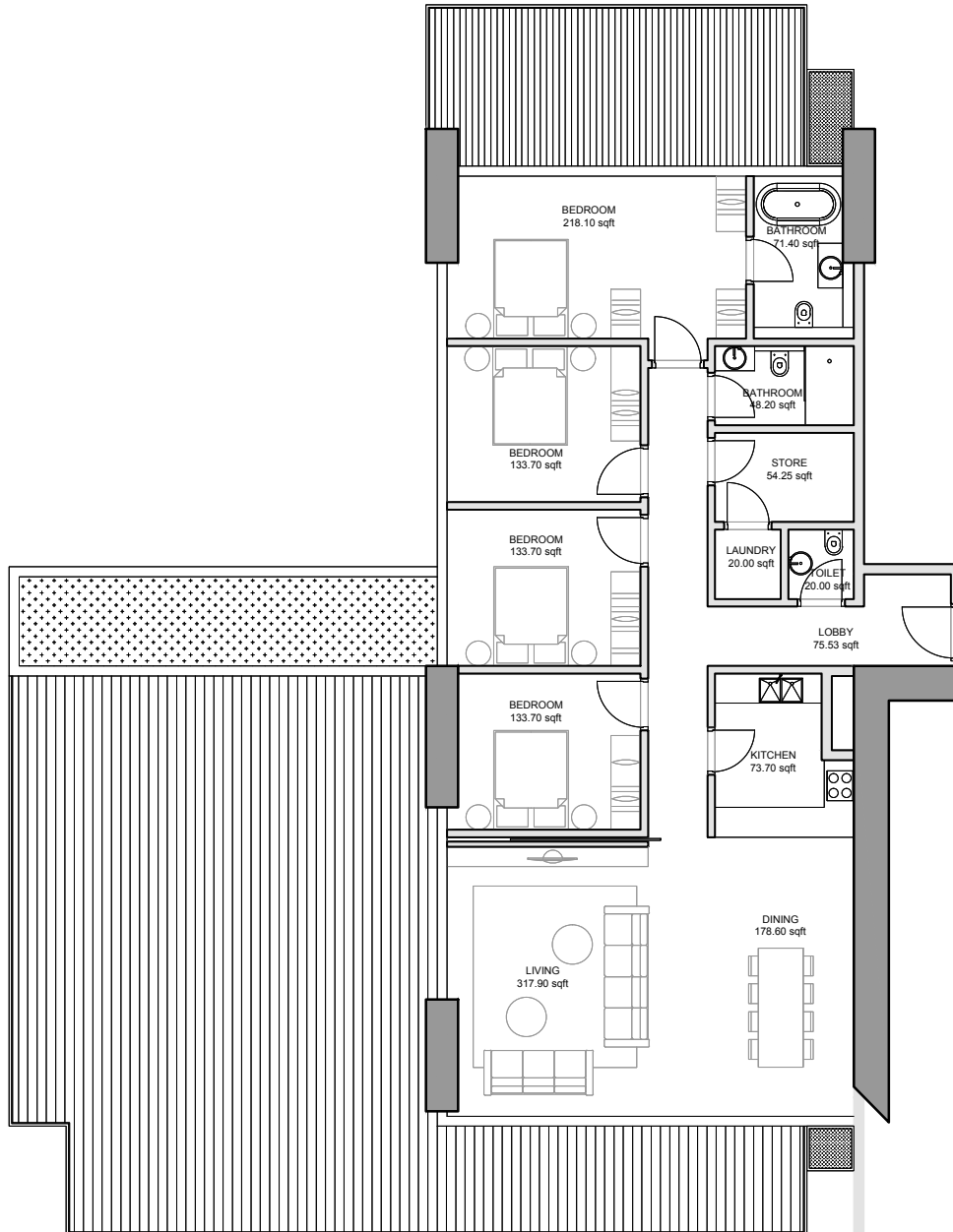
BUYER

SELLER

HAMENI RESIDENCES

ZAYA REAL ESTATE DEVELOPMENT LLC

4BR-TYPE C



APARTMENT

4BR-TYPE C

TOTAL AREA = 318.44 SQ.M. = 3427.65 SQ.FT.

INDOOR AREA = 164.47 SQ.M. = 1770.34 SQ.FT.

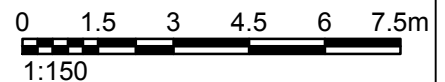
OUTDOOR AREA = 153.97 SQ.M. = 1657.31 SQ.FT.

NUMBER OF UNITS = 2 NOS.

APARTMENT CODES

W 27 01

E 27 01



LAYOUT PLAN

BUYER

SELLER

HAMENI RESIDENCES

ZAYA REAL ESTATE DEVELOPMENT LLC

4BR-TYPE D



APARTMENT 4BR-TYPE D

TOTAL AREA = 404.19 SQ.M. = 4350.66 SQ.FT.

INDOOR AREA = 218.00 SQ.M. = 2346.53 SQ.FT.

OUTDOOR AREA = 186.19 SQ.M. = 2004.13 SQ.FT.

NUMBER OF UNITS = 2 NOS.

APARTMENT CODES

W 28 01

E 28 01

0 1.5 3 4.5 6 7.5m
1:150

LAYOUT PLAN

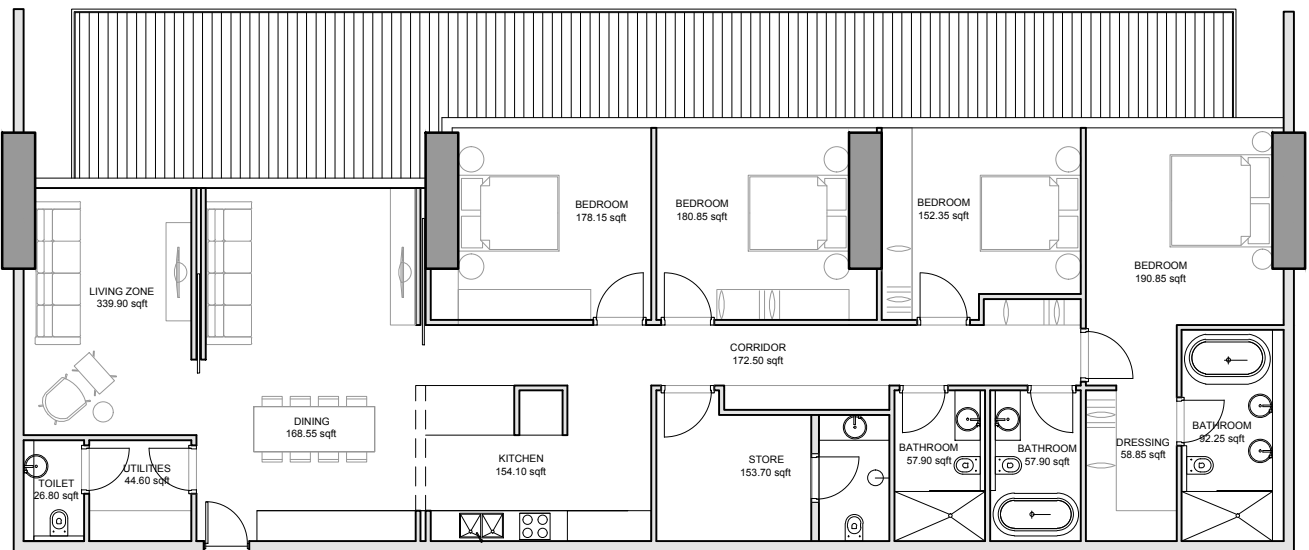
BUYER

SELLER

HAMENI RESIDENCES

ZAYA REAL ESTATE DEVELOPMENT LLC

4BR-TYPE E



APARTMENT

4BR-TYPE E

TOTAL AREA = 262.6 SQ.M. = 2826.59 SQ.FT.

INDOOR AREA = 204.12 SQ.M. = 2197.12 SQ.FT.

OUTDOOR AREA = 58.48 SQ.M. = 629.47 SQ.FT.

NUMBER OF UNITS = 3 NOS.

APARTMENT CODES

W 6 07

W 29 02

E 29 02

LAYOUT PLAN

0 1.5 3 4.5 6 7.5m
1:150

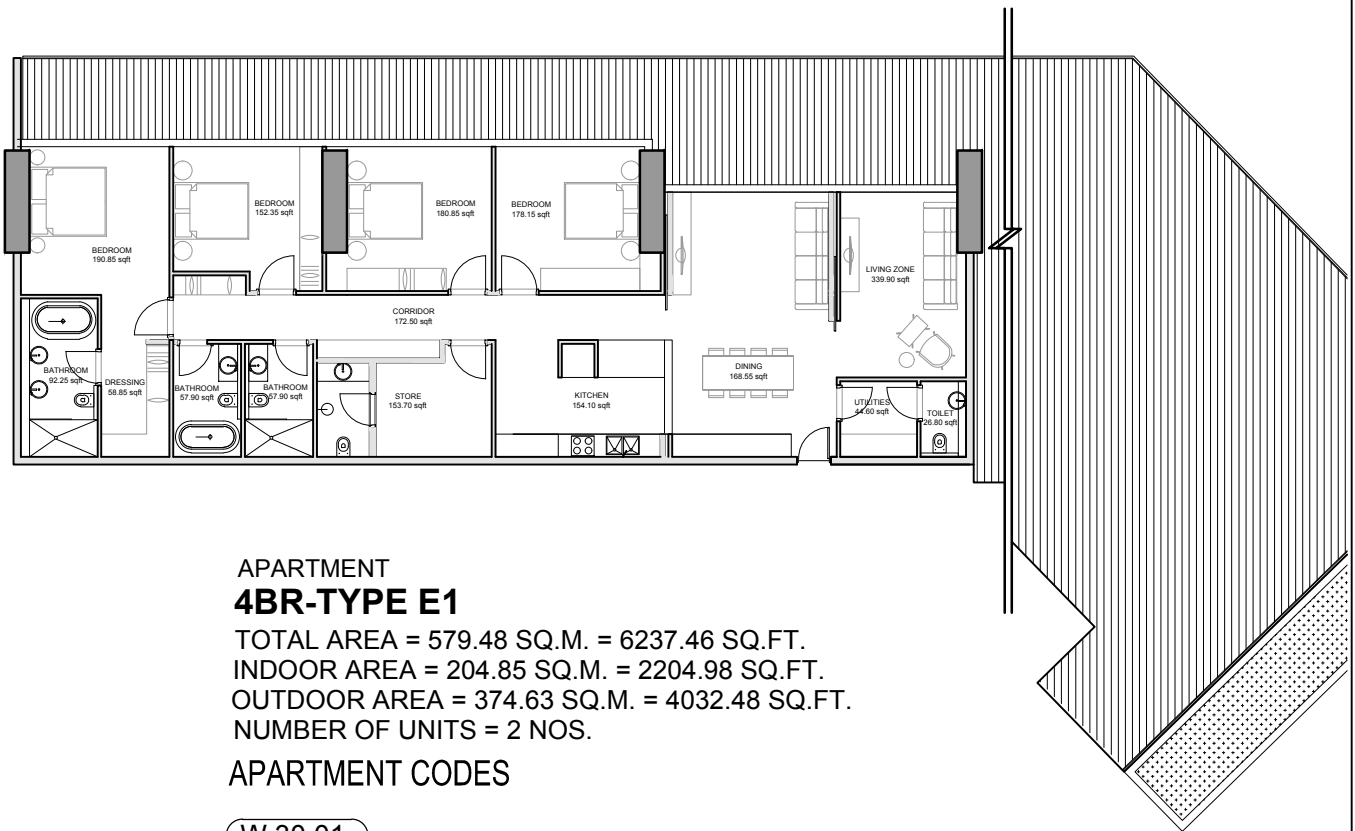
BUYER

SELLER

HAMENI RESIDENCES

ZAYA REAL ESTATE DEVELOPMENT LLC

4BR-TYPE E1



APARTMENT

4BR-TYPE E1

TOTAL AREA = 579.48 SQ.M. = 6237.46 SQ.FT.

INDOOR AREA = 204.85 SQ.M. = 2204.98 SQ.FT.

OUTDOOR AREA = 374.63 SQ.M. = 4032.48 SQ.FT.

NUMBER OF UNITS = 2 NOS.

APARTMENT CODES

W 30 01

E 30 01

LAYOUT PLAN

0 2 4 6 8 10m
1:200

BUYER

SELLER