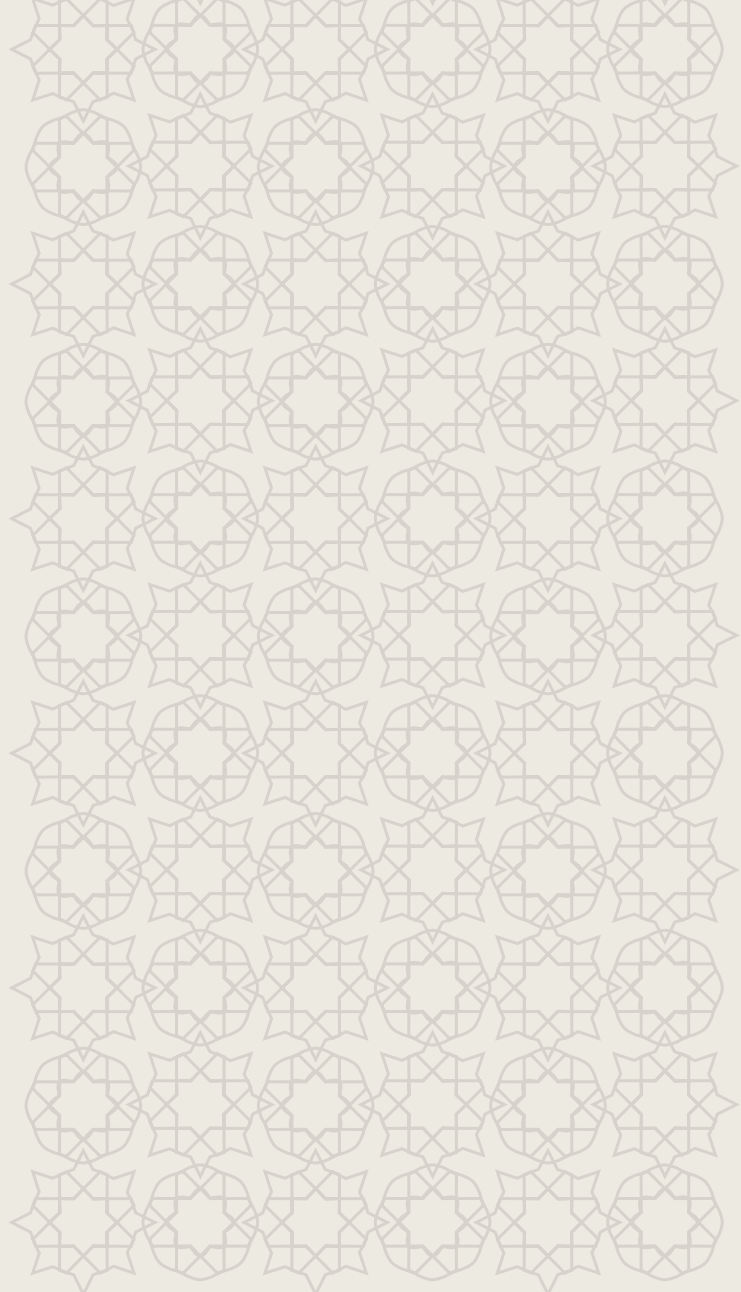




4 Bedroom Villa Type 'A'

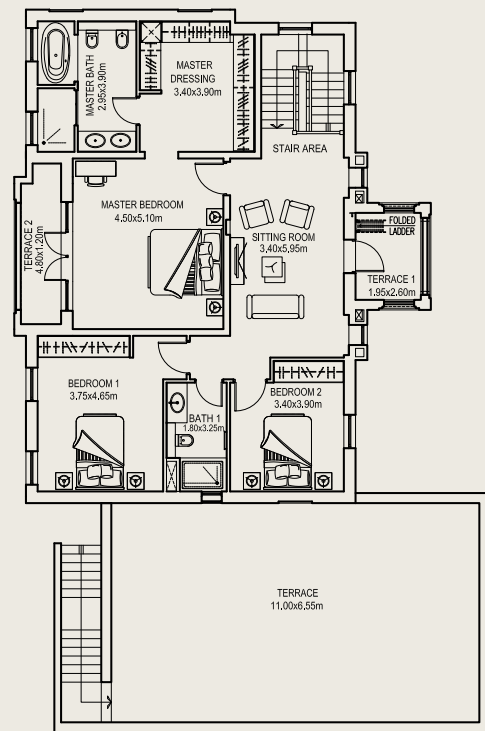
Gross floor area = 506.06 sq.m (5,447.18 sq.ft)
 Total terrace = 151.05 sq.m (1,625.89 sq.ft)
 Accessible terraces: 3
 Individual plot size: 600 sq.m (6,458 sq.ft)



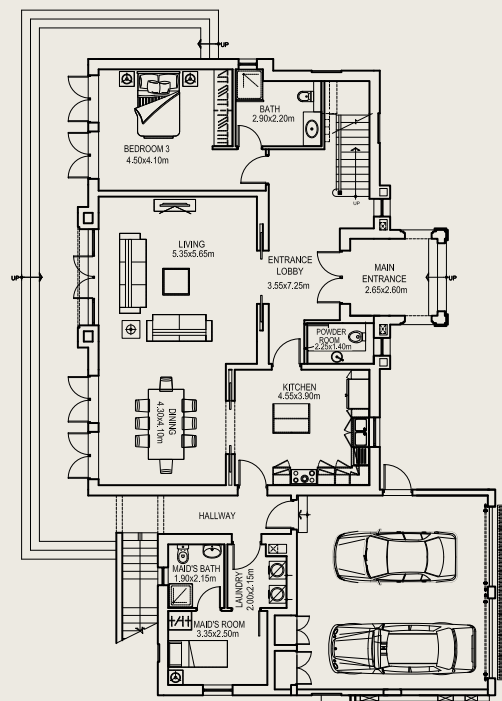
4 Bedroom Villa Type 'B'

Gross floor area = 455.2 sq.m (4,900 sq.ft)
 Total terrace = 110.01 sq.m (1,184.14 sq.ft)
 Accessible terraces: 3
 Individual plot size: 600 sq.m (6,458 sq.ft)

First Floor Plan

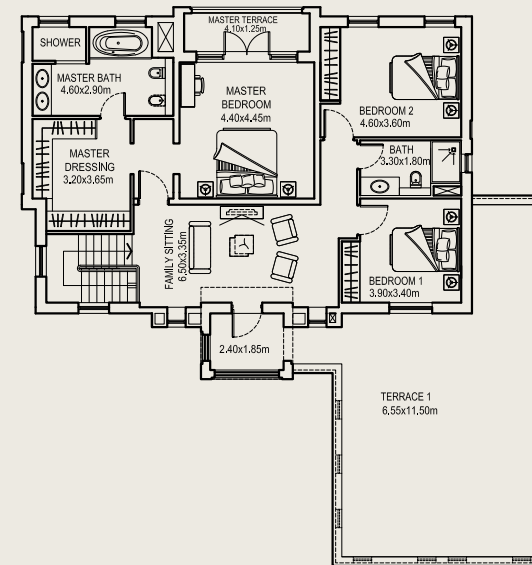


Ground Floor Plan

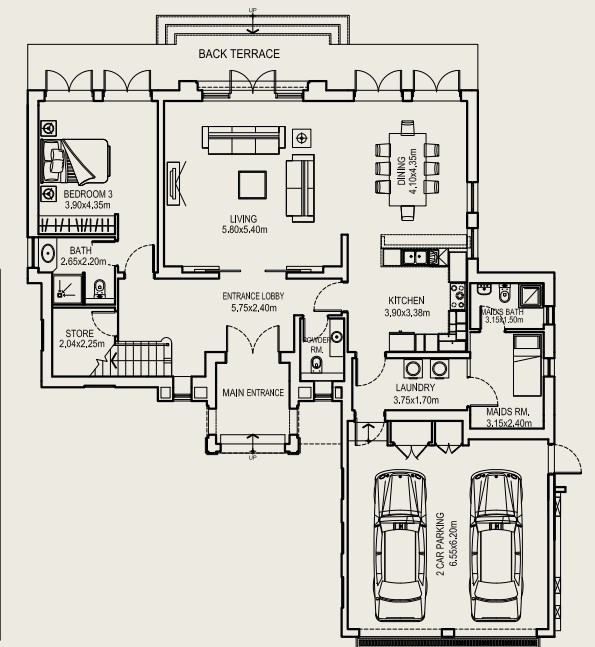


Floor plan: Numbers, square footage and floor plans are approximate. Final dimensions, square footage and floor plans may vary.

First Floor Plan



Ground Floor Plan

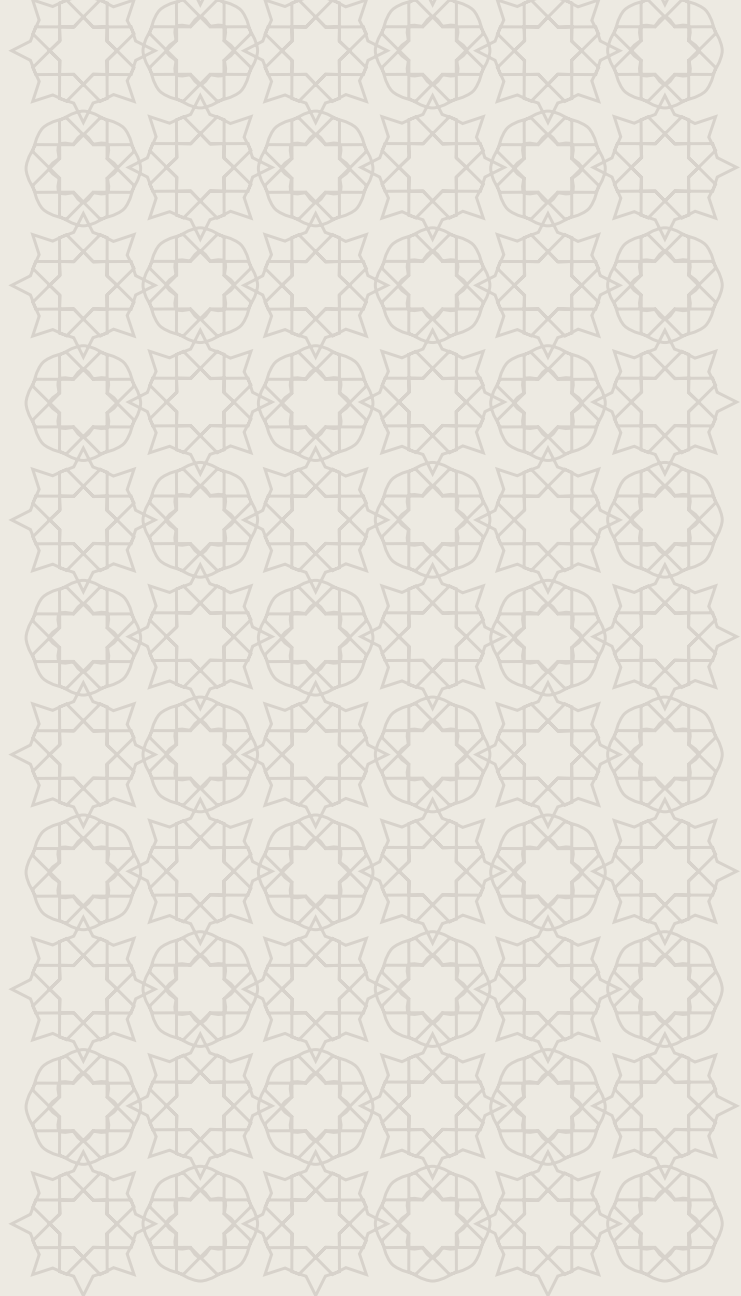


Floor plan: Numbers, square footage and floor plans are approximate. Final dimensions, square footage and floor plans may vary.



3 Bedroom Townhouse (Middle)

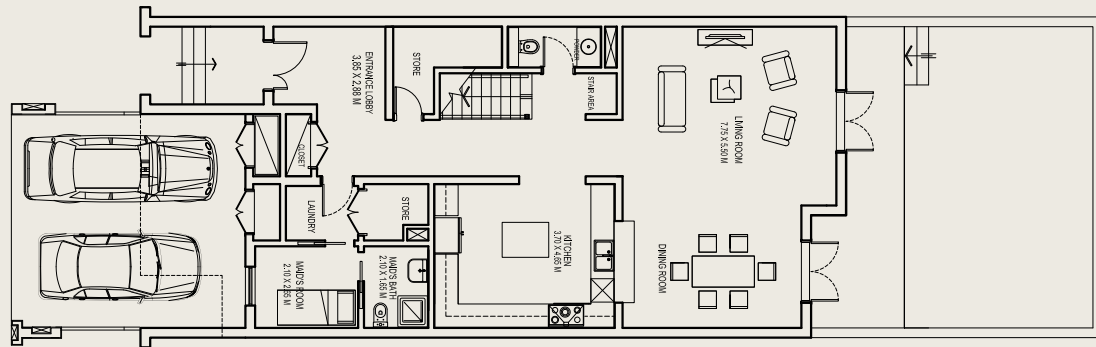
Gross floor area = 301.21 sq.m (3,242.20 sq.ft)
 Total terrace = 65.79 sq.m (708.16 sq.ft)
 Accessible terraces: 2
 Individual plot size: 224 sq.m (2,411 sq.ft)



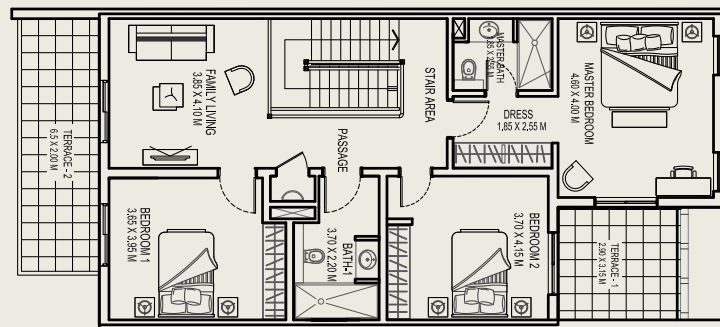
3 Bedroom Townhouse (Corner)

Gross floor area = 301.21 sq.m (3,242.20 sq.ft)
 Total terrace = 65.79 sq.m (708.16 sq.ft)
 Accessible terraces: 2
 Individual plot size: 224 sq.m (2,411 sq.ft)

Ground Floor Plan

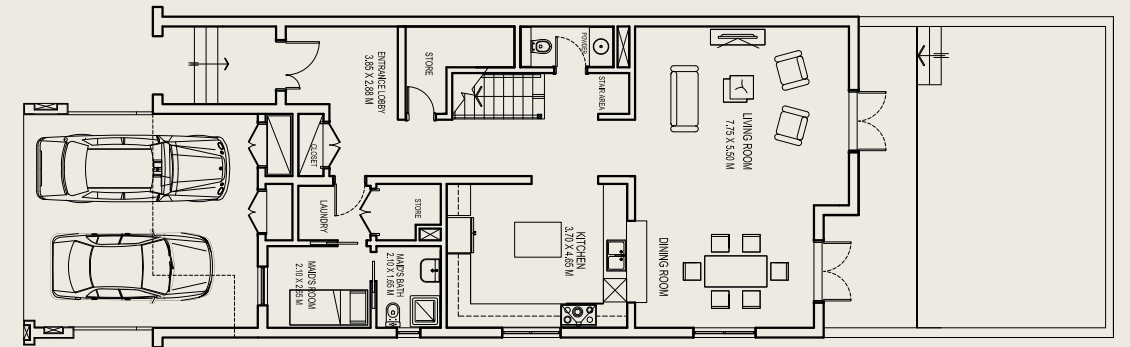


First Floor Plan

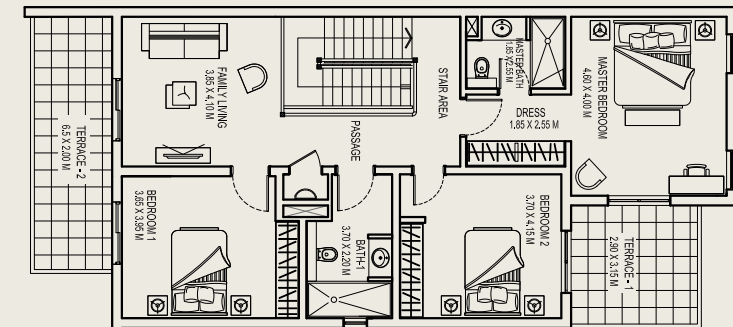


Floor plan: Numbers, square footage and floor plans are approximate. Final dimensions, square footage and floor plans may vary.

Ground Floor Plan



First Floor Plan



Floor plan: Numbers, square footage and floor plans are approximate. Final dimensions, square footage and floor plans may vary.