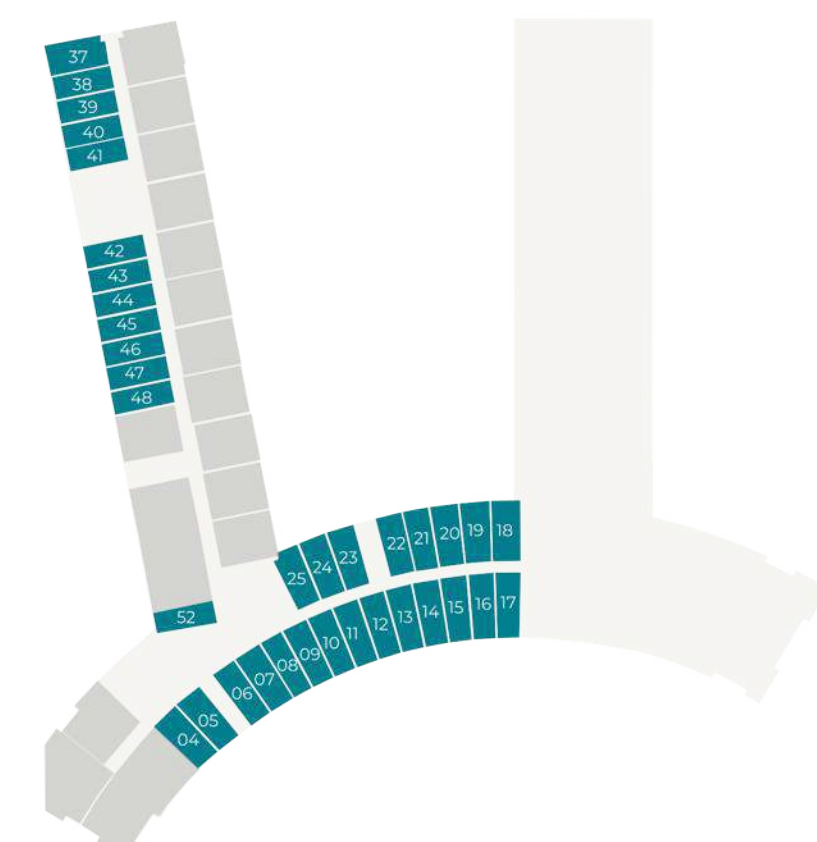


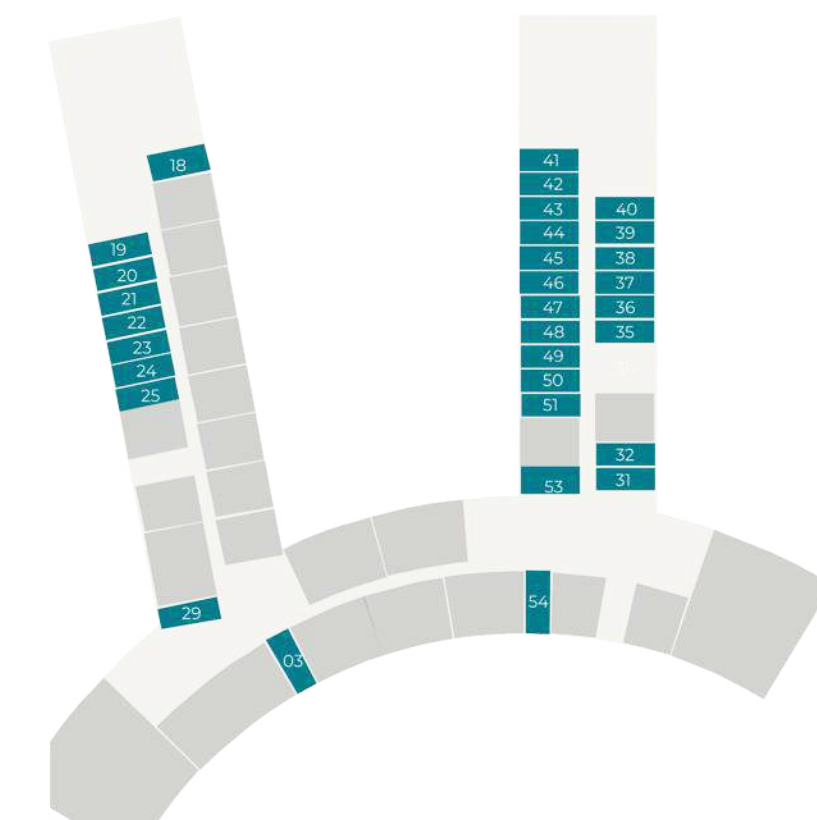
Suite Area: From 308 to 612 SQFT  
Balcony Area: From 18 to 100 SQFT  
Total Area: From 307 to 713 SQFT



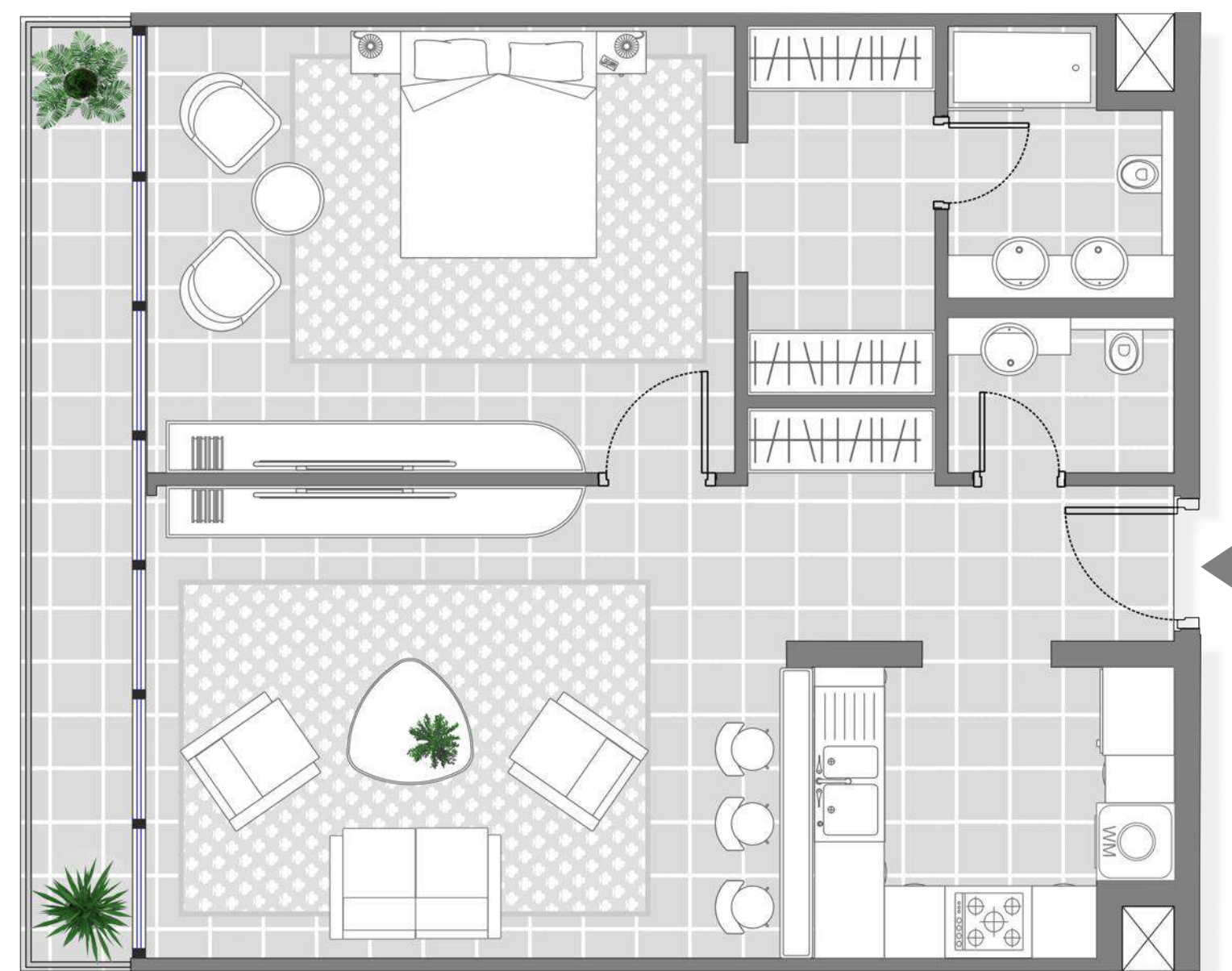
3 floor



14 floor

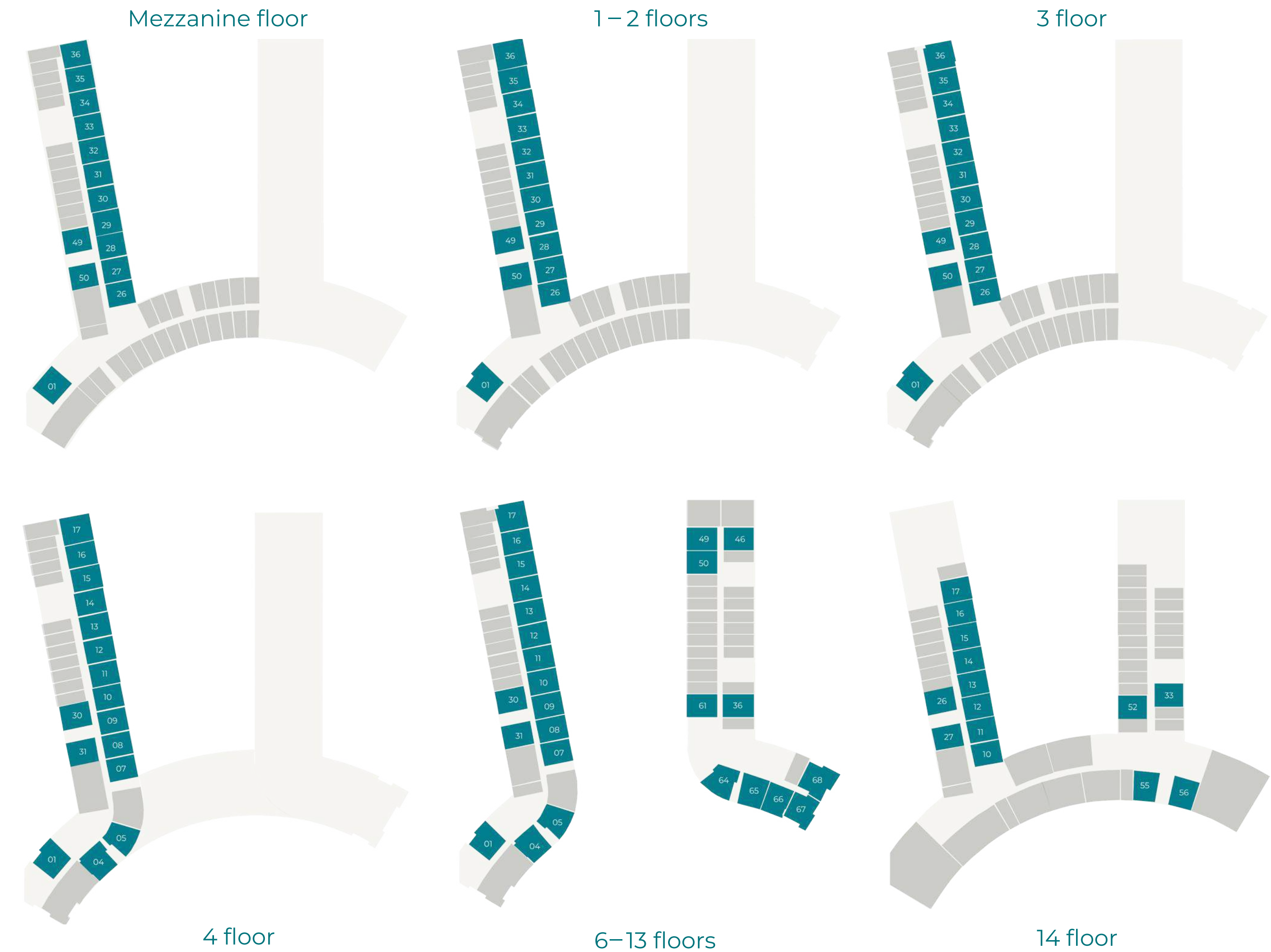




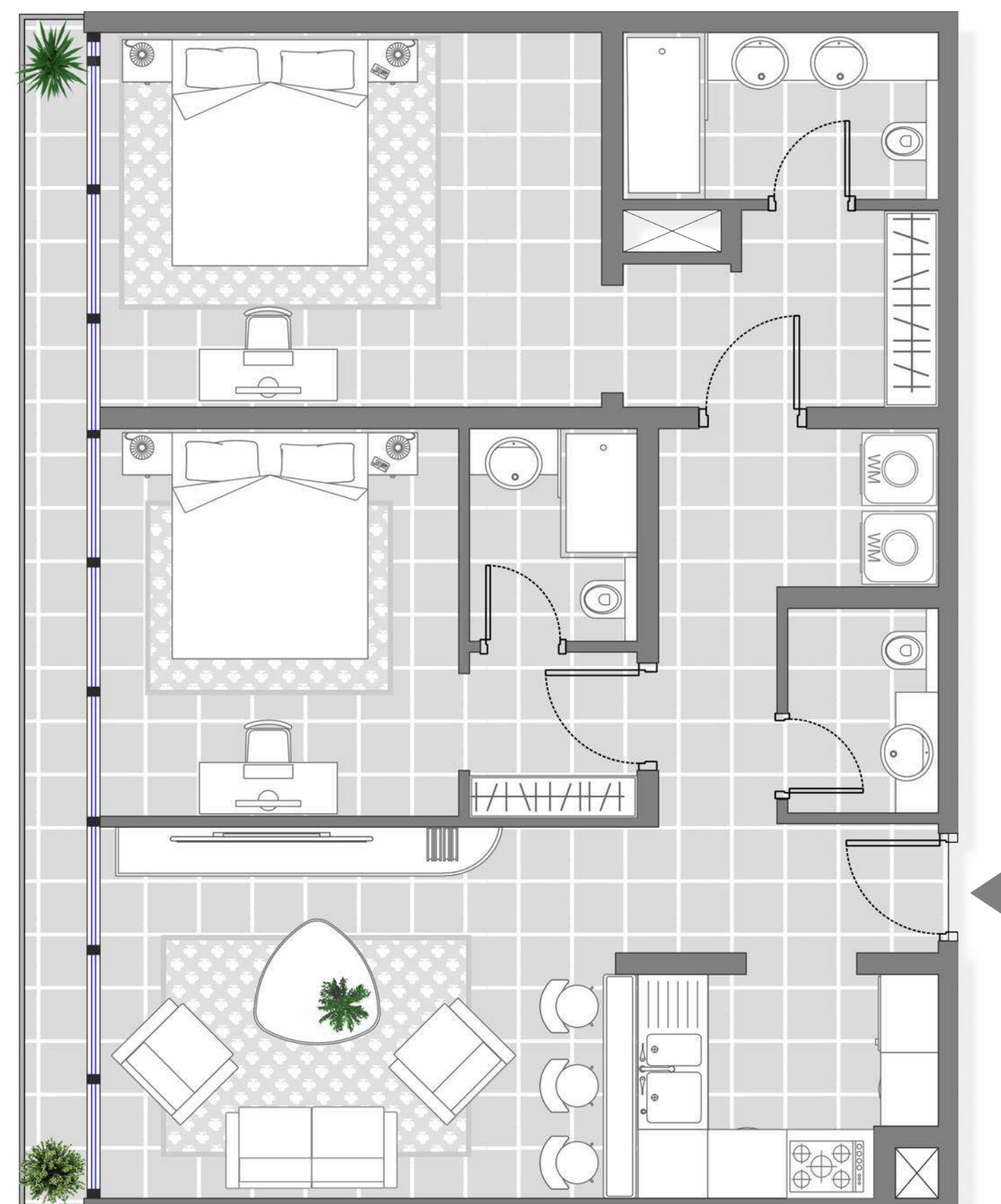


## 1 BEDROOM APARTMENTS

Suite Area: From 560 to 846 SQFT  
Balcony Area: From 33 to 174 SQFT  
Total Area: From 560 to 946 SQFT

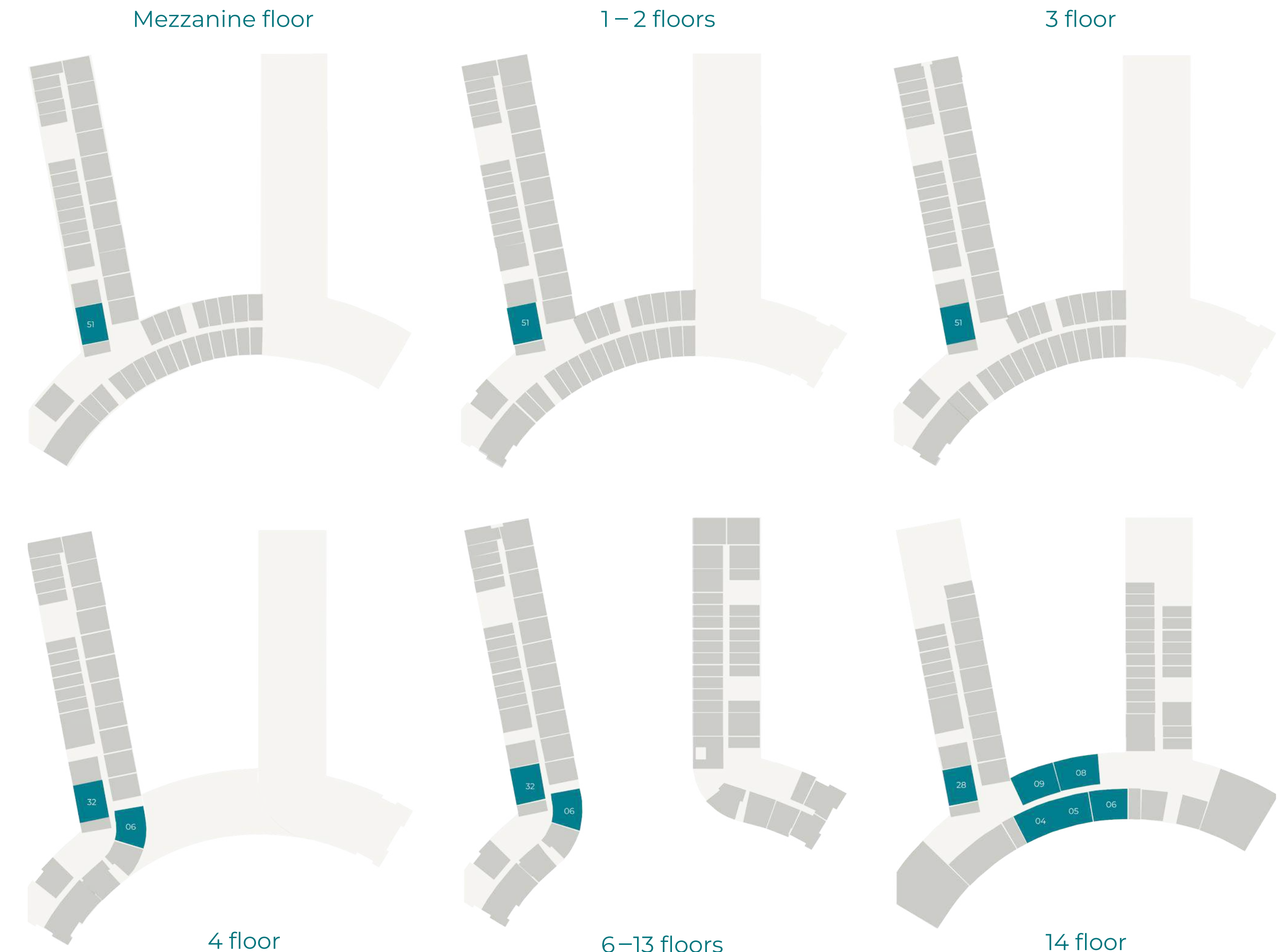




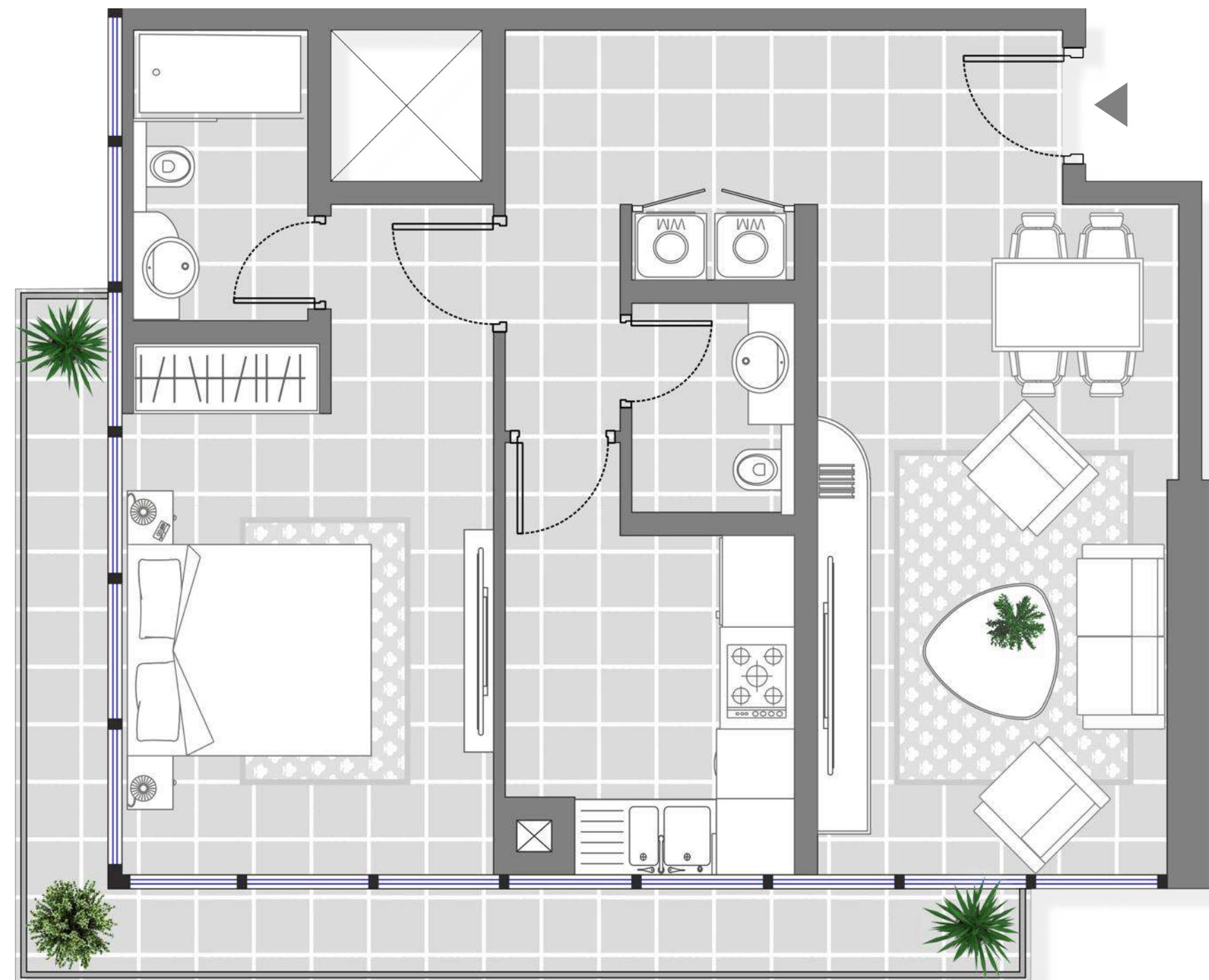


## 2 BEDROOM APARTMENTS

Suite Area: From 969 to 1080 SQFT  
Balcony Area: From 104 to 125 SQFT  
Total Area: From 1020 to 1202 SQFT





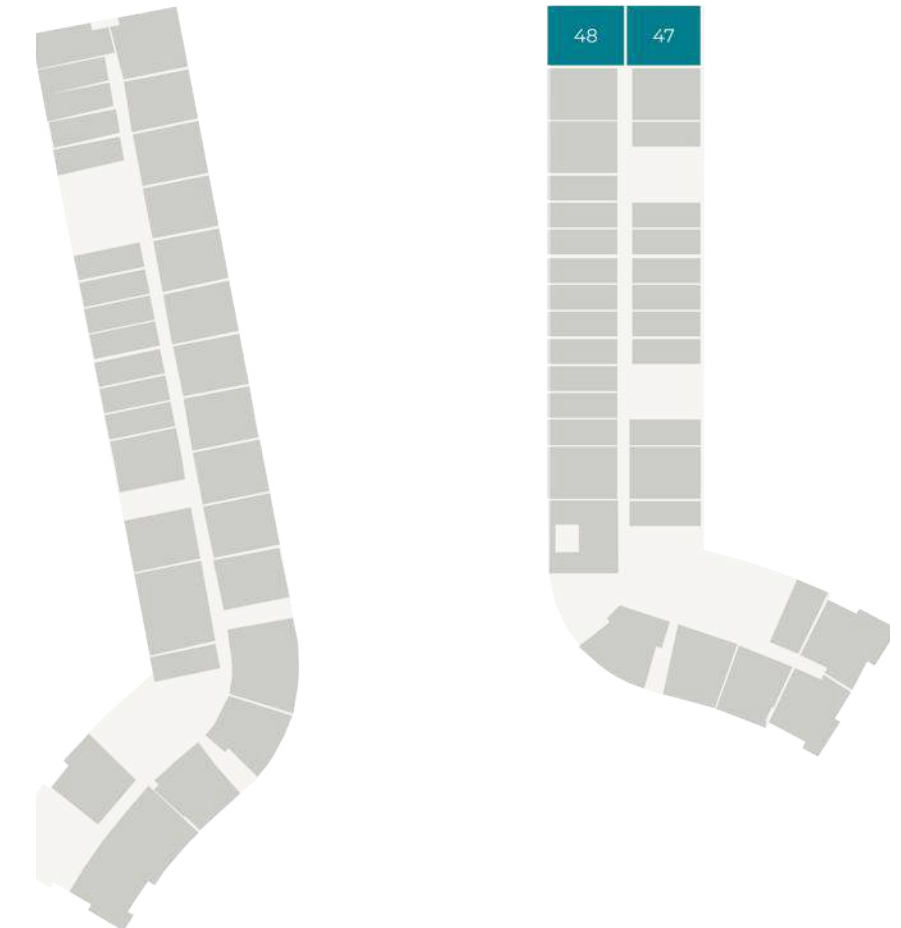


### 1 BEDROOM APARTMENTS

Suite Area: 722 SQFT  
Balcony Area: 140 SQFT  
Total Area: 862 SQFT



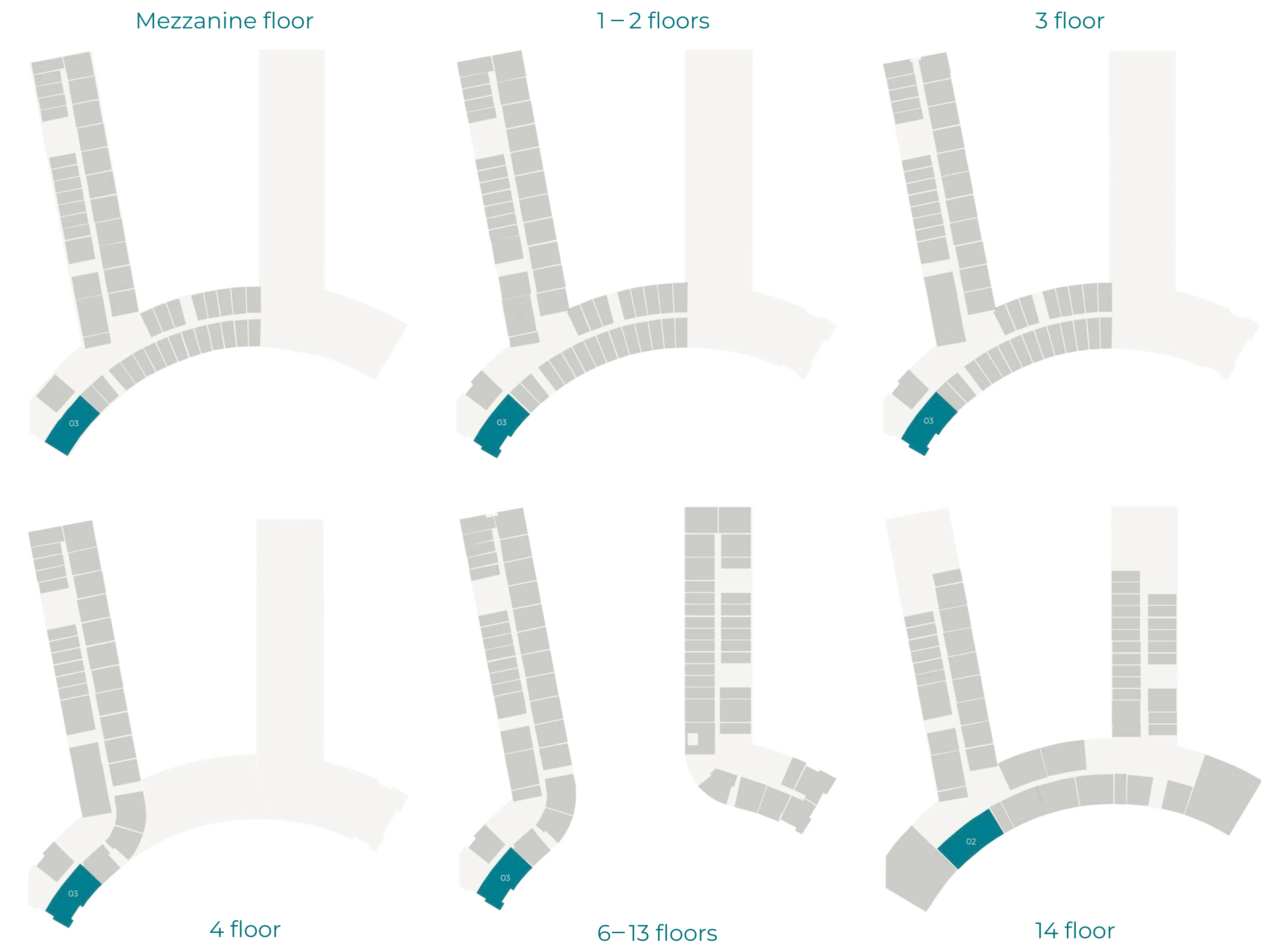
6-13 floors



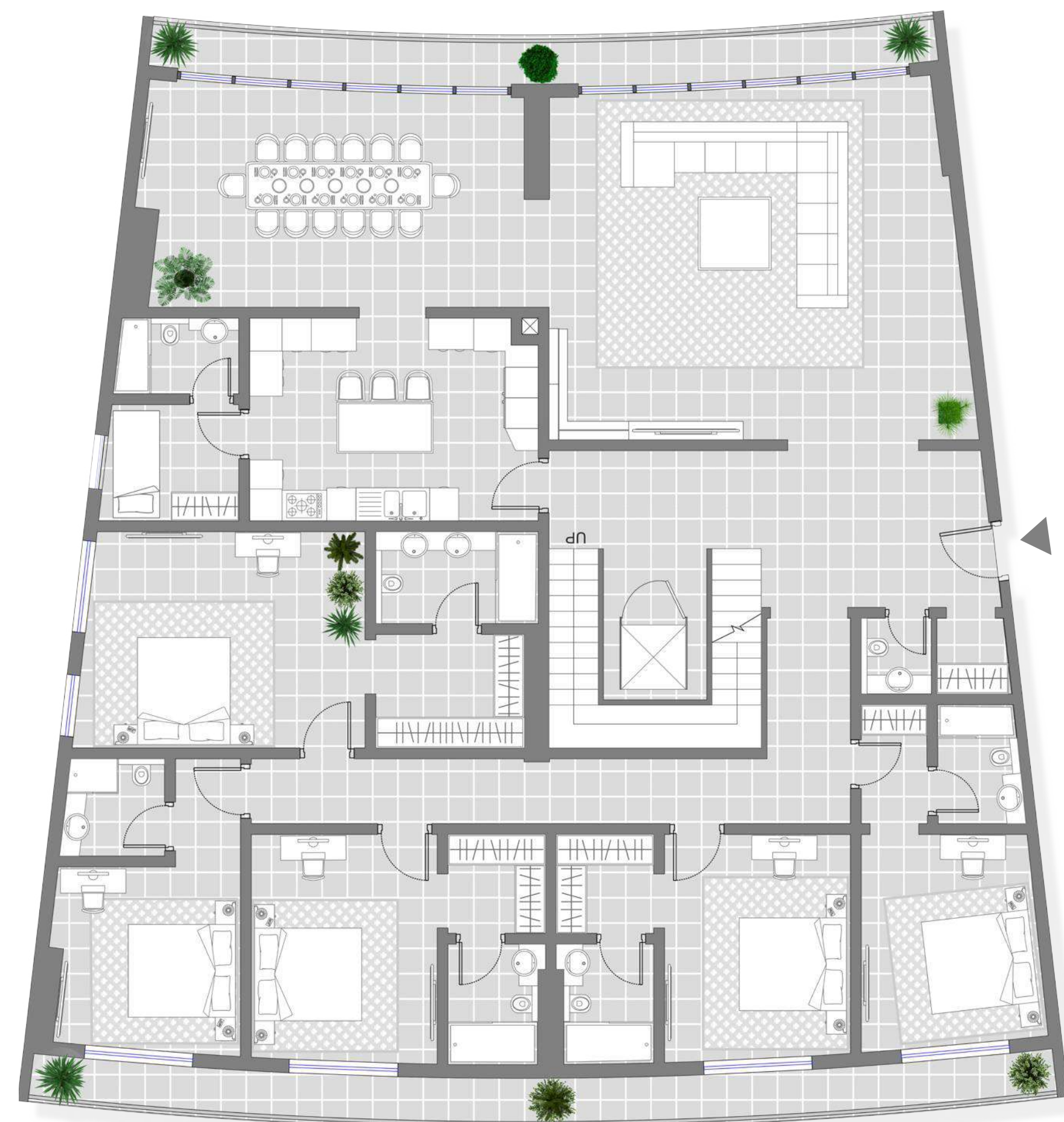


### 3 BEDROOM APARTMENTS

Suite Area: 1,511 SQFT  
Balcony Area: 153 SQFT  
Total Area: 1,664 SQFT





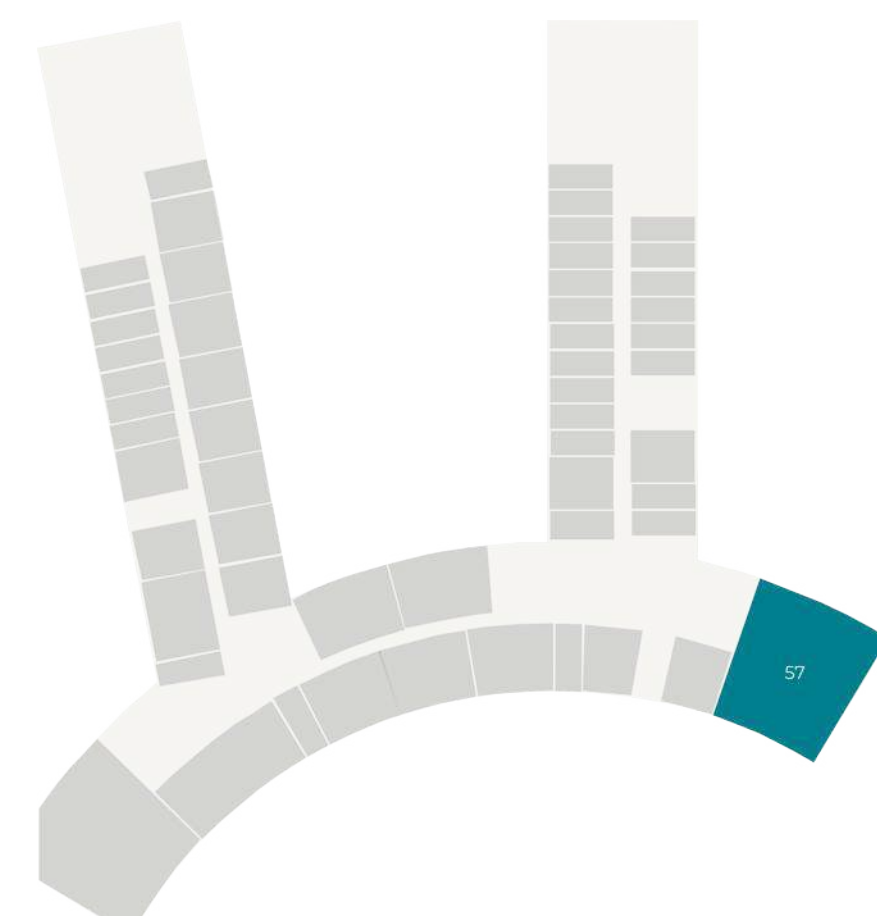


### SOUTH PENTHOUSE

Total Area: 6,984 SQFT  
Suite Area: 3,479 SQFT  
Terrace Area: 3,505 SQFT



14 floor







### NORTH PENTHOUSE

Toral Area: 6,892 SQFT  
Suite Area: 3,529 SQFT  
Terrace Area: 3,363 SQFT



14 floor

