



C A N V A S



It's whatever you want it to be

A sanctuary from the city

A creative hub to inspire collaboration

A pocket of culture where Dubai's creatives gather

It's a quiet moment in the garden

It's the morning light streaming through your bedroom window
It's a place where you constantly discover, yet feels so familiar at the same time
It's the place you can't wait to return to everyday
Home is what you make it. It's there to create the life you've always wanted
Welcome to your Canvas



Dubai is changing. The creative community is flourishing; individuality, energy and progress are hallmarks of the city and pockets of culture are rising up to meet the demands of a new guard of global citizens. KOA represents this movement. We build communities that enrich every element of one's life and reflect the soul of a dynamic new Dubai.

Our first project, Canvas, is a showcase of this ethos. A unique member's community where like-minded individuals come together to live, work and play; it's a hub of energy and substance where residents can carve out a space as unique as they are. It's a community that both celebrates individualism and encourages collaboration and social engagement. It's here where connections are made, ideas come to life, potential is unlocked and where you truly feel at home.

We created Canvas to reflect the values of a new Dubai and provide a starting point for residents to create the life they desire. We want you to make it yours. We know you will be at home here.

Mohammed Zaal

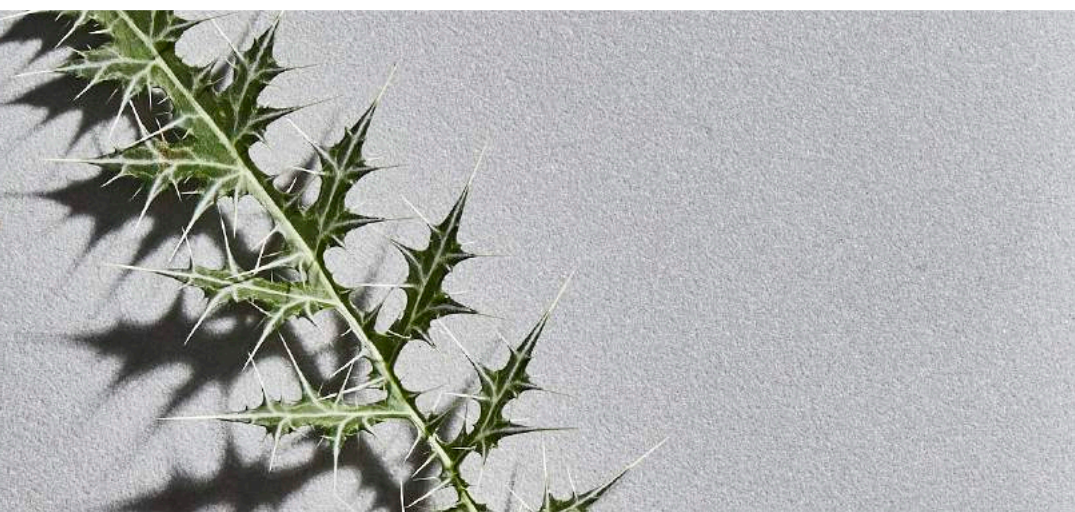
CANVAS

Canvas, the first project from KOA, offers a new approach to modern living in Dubai.

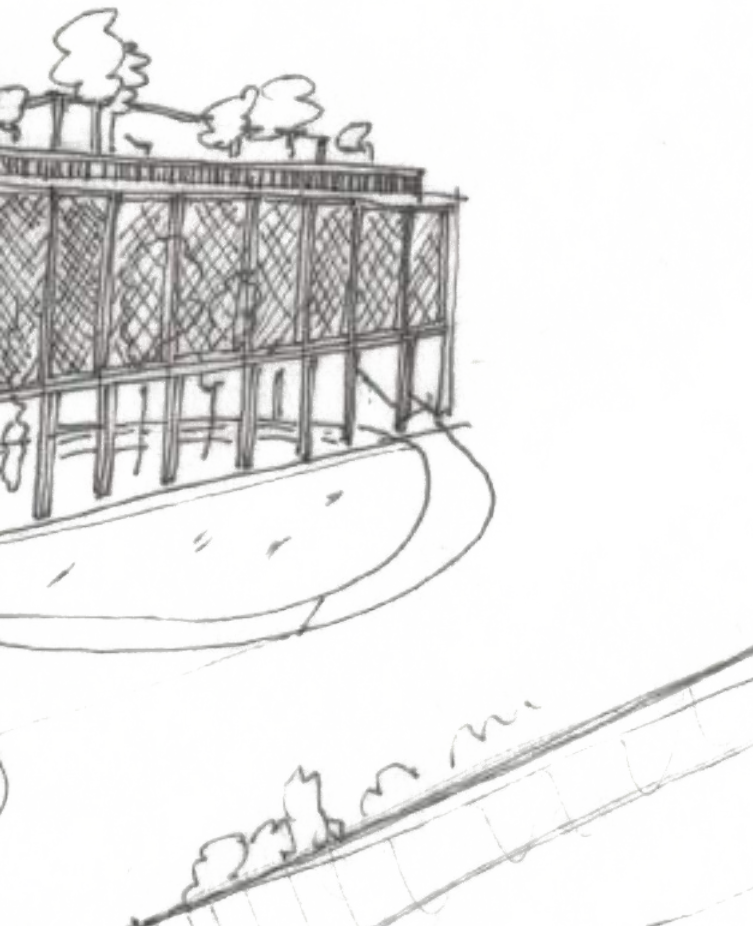
Much like the city itself Canvas is a showcase in the duality of space.

The project seamlessly merges old with new, craftsmanship with striking modernity and innovation in design, the natural environment with urban living, a vibrant sense of culture and energy balanced with a tranquil living environment.









Designed by T.ZED Architects, the 70 residences across 2 buildings are unlike anything available in Dubai.

41 unique layouts have each been designed with a new generation of modern residents in mind where functionality, timeless design, distinguished signature details and integrity of materials are hallmarks of the project.

Located just 20 minutes from the city in Mohammad Bin Rashid Gardens it's a place where one can leave the world behind and enjoy a truly immersive, one-of-a-kind experience.





A unique community where the concepts of energy, space and substance are reimagined and the power of collaboration and the collective mind are celebrated.



SPACE

It's about how you live in a place not the boundaries of your four walls.

Canvas provides such a sense of freedom and individual expression.





41 bespoke floor plans within the 70 unit complex offer a truly unique experience to each resident while a raw, natural palette of materials sets a neutral tone to each space that awaits your personal styling.

Outdoor spaces as extensions of the interiors blur the boundaries between inside and outside. An emphasis on natural light in all rooms, and views of the landscape beyond redefines the home space as your personal sanctuary.

The places where you live, work and socialise merge effortlessly together and the way you experience life is reimagined. Your living room transforms from a family gathering space to a personal library. The lobby becomes an art gallery. A communal working space leads to a garden and the garden becomes a private dining room.

Your surroundings become anything you want them to be and your entire community becomes your home.









SUBSTANCE

It's the meaning and purpose behind every touch and every experience.

Every element of Canvas tells a story and provides a unique and intriguing experience.





The overall palette of colours and textures was born out of the nature of the site. Stone and timber line each unit, revealed uniquely in each room across the walls, floors and surfaces, while hints of exposed concrete add contrast and depth to the entire space.

The natural stone, timber and metal applications flow seamlessly throughout the exteriors and interiors bringing all elements together in a harmonious whole. Water features, open-planted courtyards, natural light, fluid and continuous lines enhance the whole landscape.

Inspired by the lush ecosystem surrounding the area, nature has been placed at the heart of the development. Indigenous plant species are the basis of the landscaping, paying homage to the natural environment of the region.

From the moment you arrive you know you are part of something real.







ENERGY

A spark that drives you with no limits on what you can become.

Designed as a sanctuary from city life, residents can lose themselves in the multitude of amenities that revive and rejuvenate the senses.





200,000 sq ft of indigenous landscaped gardens welcome you in, with winding walking trails that allow you to immerse yourself in your surroundings. Soothing water features provide an added sense of clarity and calm.

Every interpretation of leisure is considered. Three pools spread over the property offer the choice of family fun, a solo lap, or a more social experience. On-call luxurious spa facilities allow you to indulge while a state-of-the-art fitness studio and paddle tennis courts provide a more active interpretation of down-time.

An on-site day care and dedicated children's play area offers convenience to everyday life and makes Canvas a haven for families.

It's a community designed for living with vibrancy that is unmatched.







COLLECTIVE

Ideas and experiences come together to shape meaning.

The creativity and the energy of each resident are harnessed to create a socially dynamic community.





So much more than just a collection of individual residences, Canvas offers a platform where minds come together, creating human engagement and social collaborations.

A unique co-working space is the heartbeat of the development. A space where residents can gather and work alongside entrepreneurs and creatives from the region.

A gourmet market and restaurant brings residents together over a coffee or meal and a multi-purpose amphitheatre provides a hub of culture and entertainment where events, speakers and activity will inject the community with a sense of soul and excitement.

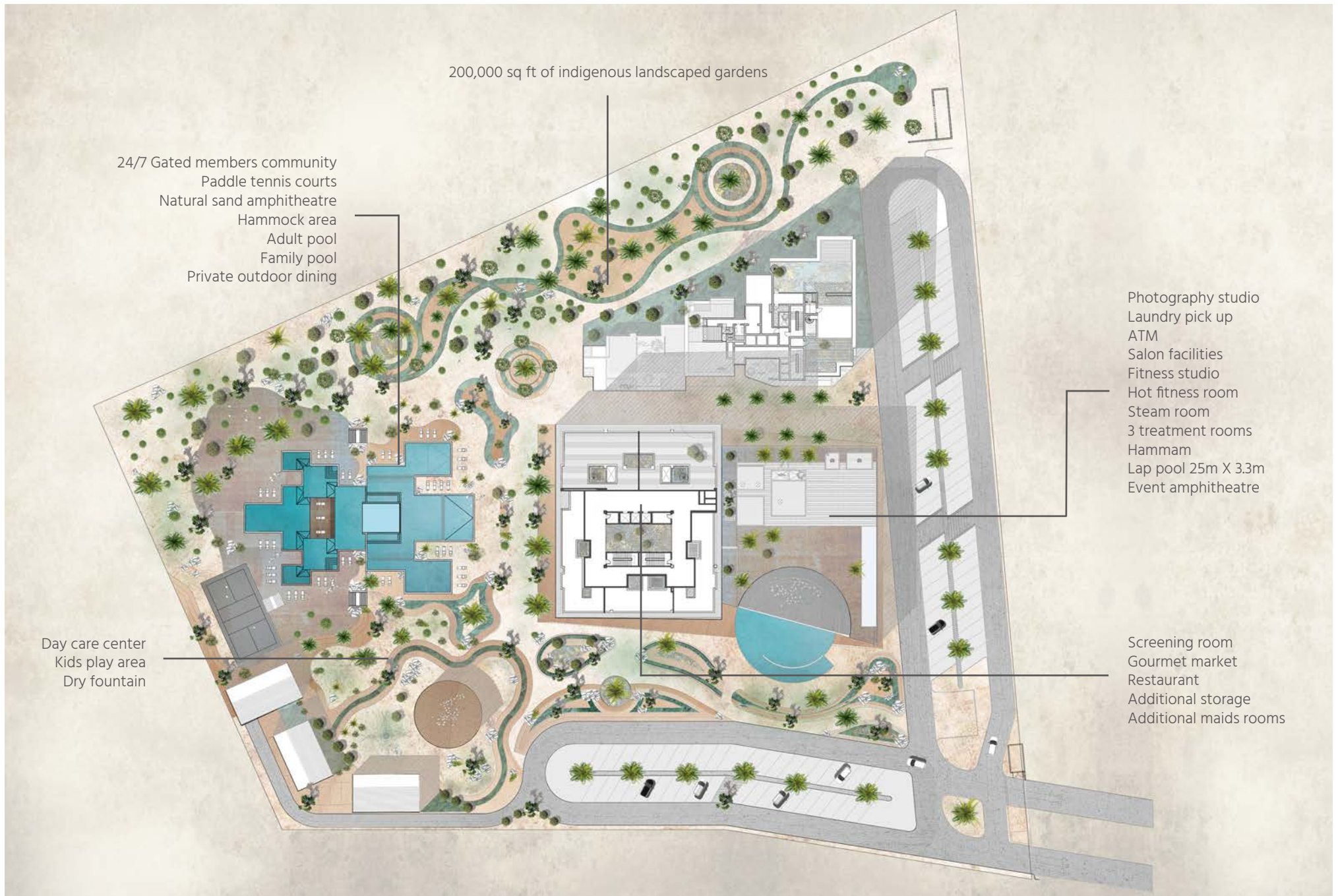
It's a place where people come together and ambition and potential are unlocked.







Designed as a member's community where every convenience, service and amenity is available at your doorstep.



200,000 sq ft of indigenous landscaped gardens

24/7 Gated members community
Paddle tennis courts
Natural sand amphitheatre
Hammock area
Adult pool
Family pool
Private outdoor dining

Day care center
Kids play area
Dry fountain

Photography studio
Laundry pick up
ATM
Salon facilities
Fitness studio
Hot fitness room
Steam room
3 treatment rooms
Hamam
Lap pool 25m X 3.3m
Event amphitheatre

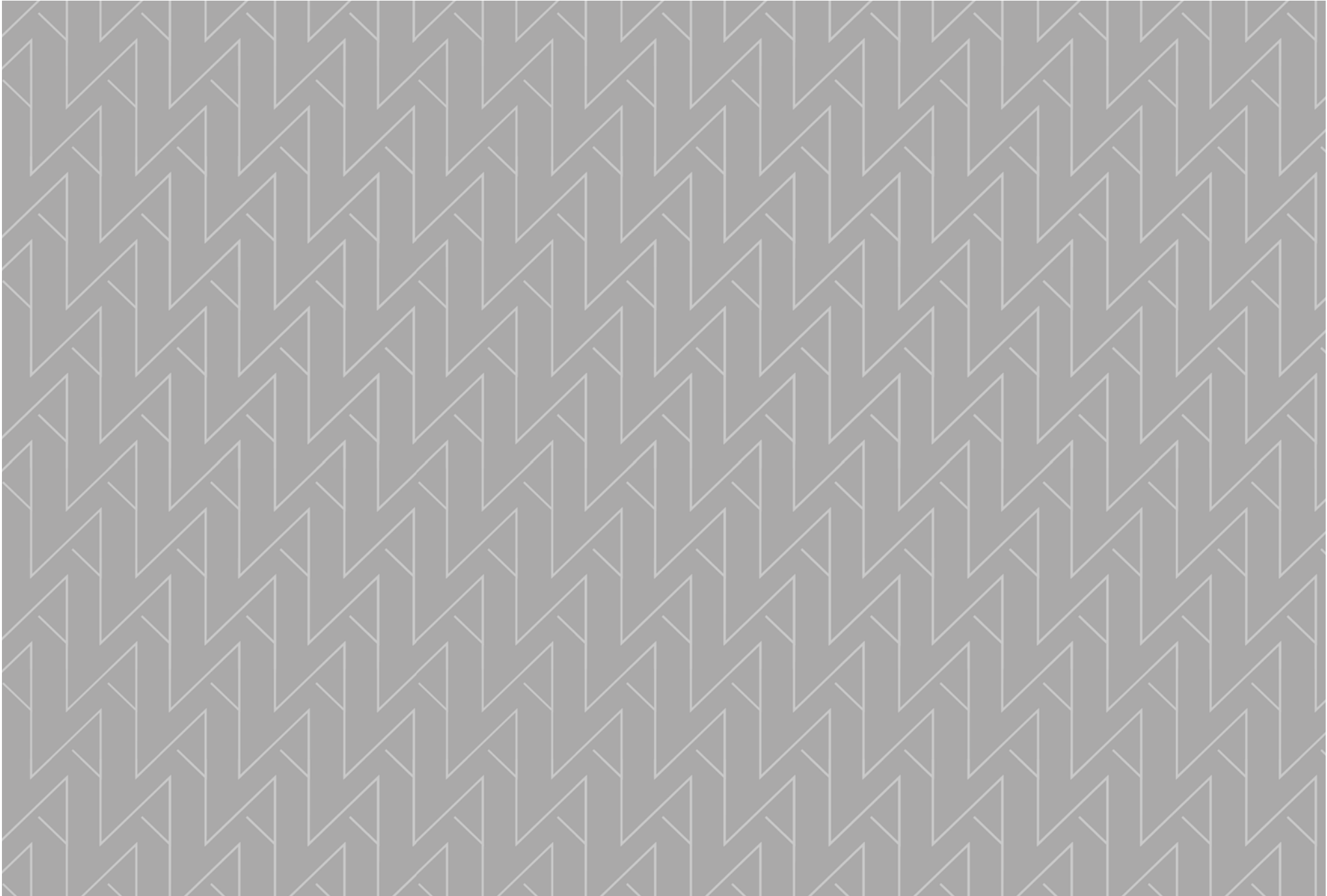
Screening room
Gourmet market
Restaurant
Additional storage
Additional maids rooms



This is your Canvas







Disclaimer: Drawings and images are for illustrative purposes.
Information is subject to change without notice.