



Redwood Avenue

at Jumeirah Golf Estates

Redwood Avenue by Jumeirah Golf Estates

MARCH 2018

THE WORLD'S PREMIER RESIDENTIAL AND LEISURE DESTINATION

Set in breath-taking acres of open space, Jumeirah Golf Estates is a select residential development that offers an unmatched way of life.

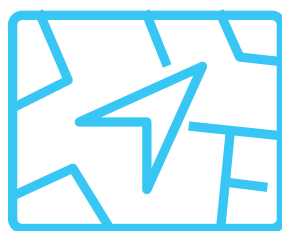
Each of the 16 well-appointed communities on the estate blends the comforts of luxe urban living with the tranquillity of nature. Just minutes away from Dubai's major attractions, Jumeirah Golf Estates offers incredible views of two famous Championship golf courses, lush, landscaped gardens and expansive skies.



LIFE AT JUMEIRAH GOLF ESTATES



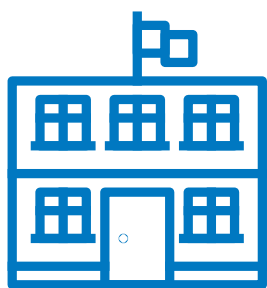
1,835
Total homes



1,119
Hectares



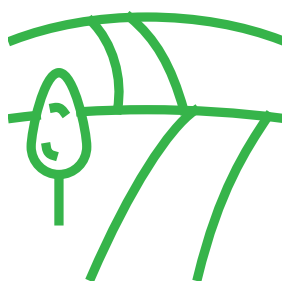
700
Families



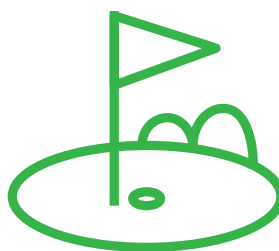
1
Clubhouse and
country club



3
F&B outlets



16KM
Jogging and
cycling paths



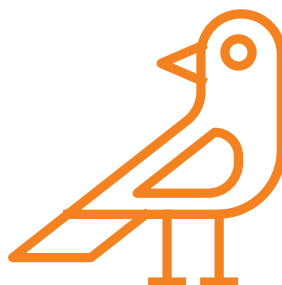
2
Championship
golf courses



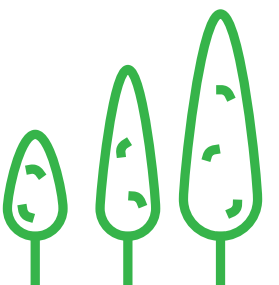
1
European tour
performance institute



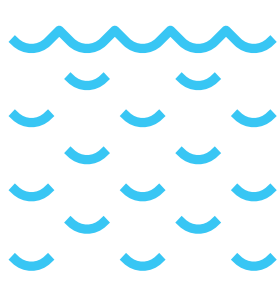
65,000
Spectators at
DPWTC every year



342
Species




4,000+
Trees








15
Lakes

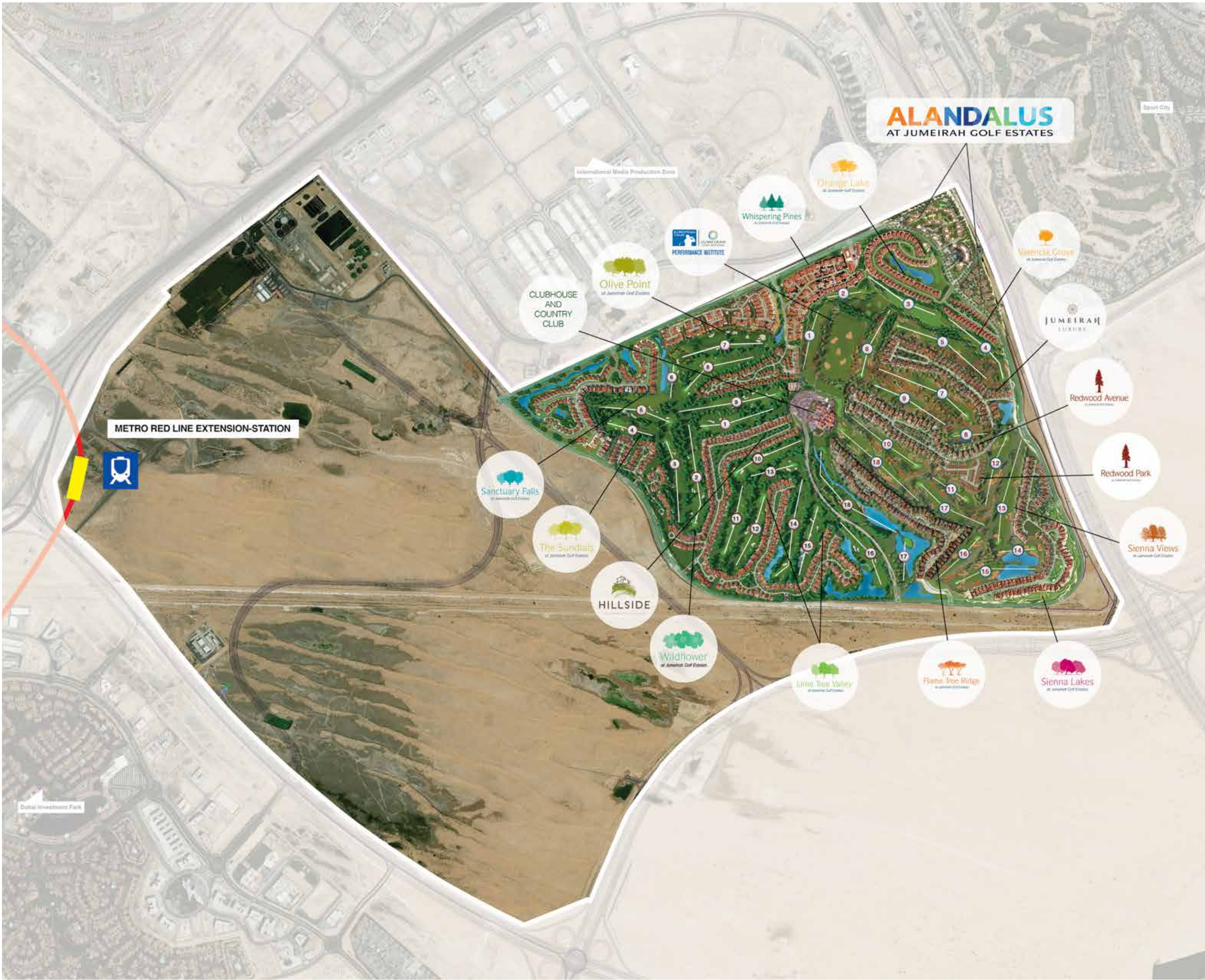
WHERE WE ARE

-  Mall Of The Emirates
-  Burj Al Arab
-  Ain Dubai
-  Expo 2020 Dubai Site
-  Meydan Racecourse
-  Downtown Dubai
-  Atlantis, The Palm
-  Dubai Creek Tower
-  Dubai International Airport
-  Al Maktoum International Airport
-  Dubai Marina



JGE MASTERPLAN

-  Redwood
-  Alandalus
-  Whispering Pines
-  Flame Tree Ridge
-  Wild Flower
-  Fire Golf Course
-  Earth Golf Course



JUMEIRAH GOLF ESTATES

Set on 1,119 hectares of beautiful landscapes, Jumeirah Golf Estates is one of the Middle East's most desirable and exclusive residential and leisure communities.

Ancient Mediterranean-inspired architecture

complemented by striking water features and flora

Just 6km away

from the World Expo Dubai 2020 site

Over 900

Golf Club Members

Over 1,800

luxury properties

across 16 distinct districts

15 minutes

from the Dubai Marina

More than 700 families

happy live there

75% is outdoor space, compared to **25%** residential

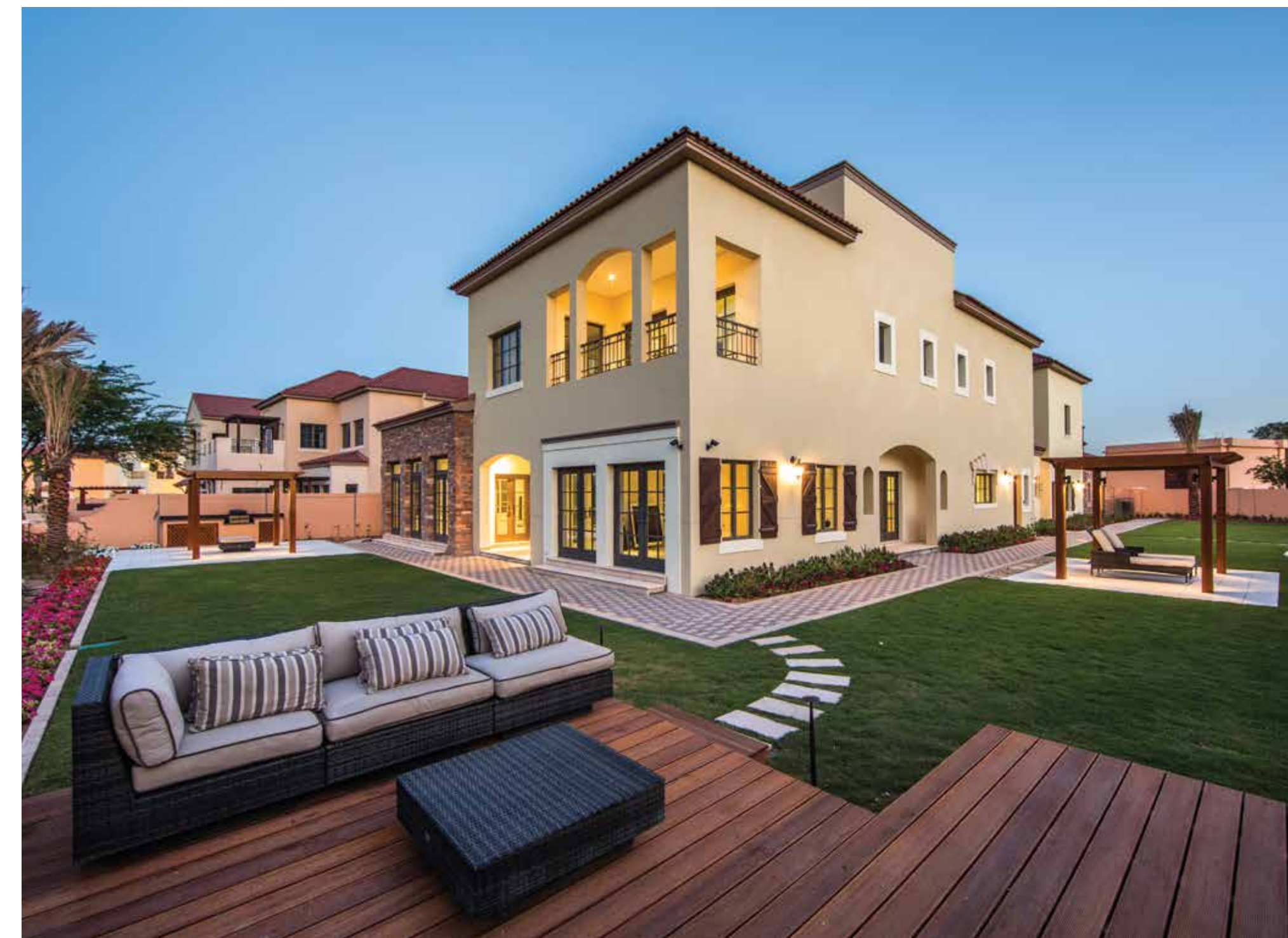


A woman with dark hair tied back, wearing a white dress with a teal floral pattern, stands on a balcony. She is looking out over a lush green golf course with a sand trap in the foreground. In the background, there are several two-story residential buildings with red-tiled roofs and some trees. The sky is clear and blue.

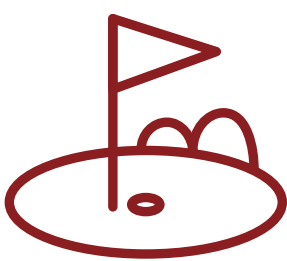
REDWOOD AVENUE PERFECTION LIES IN THE DETAILS

REDWOOD AVENUE

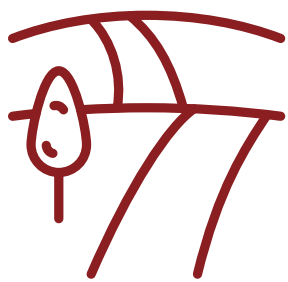
- **47 individually** designed villas
- Properties ranging from **8,135 sqft** to **11,061 sqft**
- Unique collection of stunning **five and six-bedroom** villas
- Superb views of the golf course
- Equipped with world's leading names in audio-visual technology, interiors, appliances and security systems
- Thoughtfully planned and constructed - a unique expression of its owners' tastes and lifestyle
- Homeowners have a choice of **11** architectural styles and **four** interior schemes, exclusively designed by **B&B Italia**



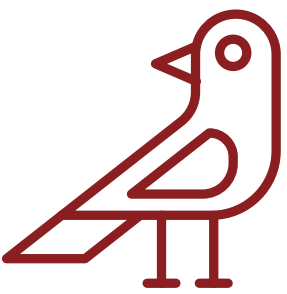
PERFECTION LIES IN THE DETAILS



2
Championship
golf courses



5KM+
of walking
paths



Attracts several
species of birds



Overlooking
fire course



Landscaped
gardens



PERFECTION LIES IN THE DETAILS

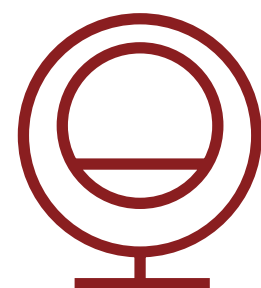
Residents have access to a range of leisure amenities suited to every taste and age, and variety of shopping options.



47
Villas



5-6
Bedrooms
spacious villas



Modern
Living



1
Clubhouse



2
Community
centres



25+
Shops and
restaurants

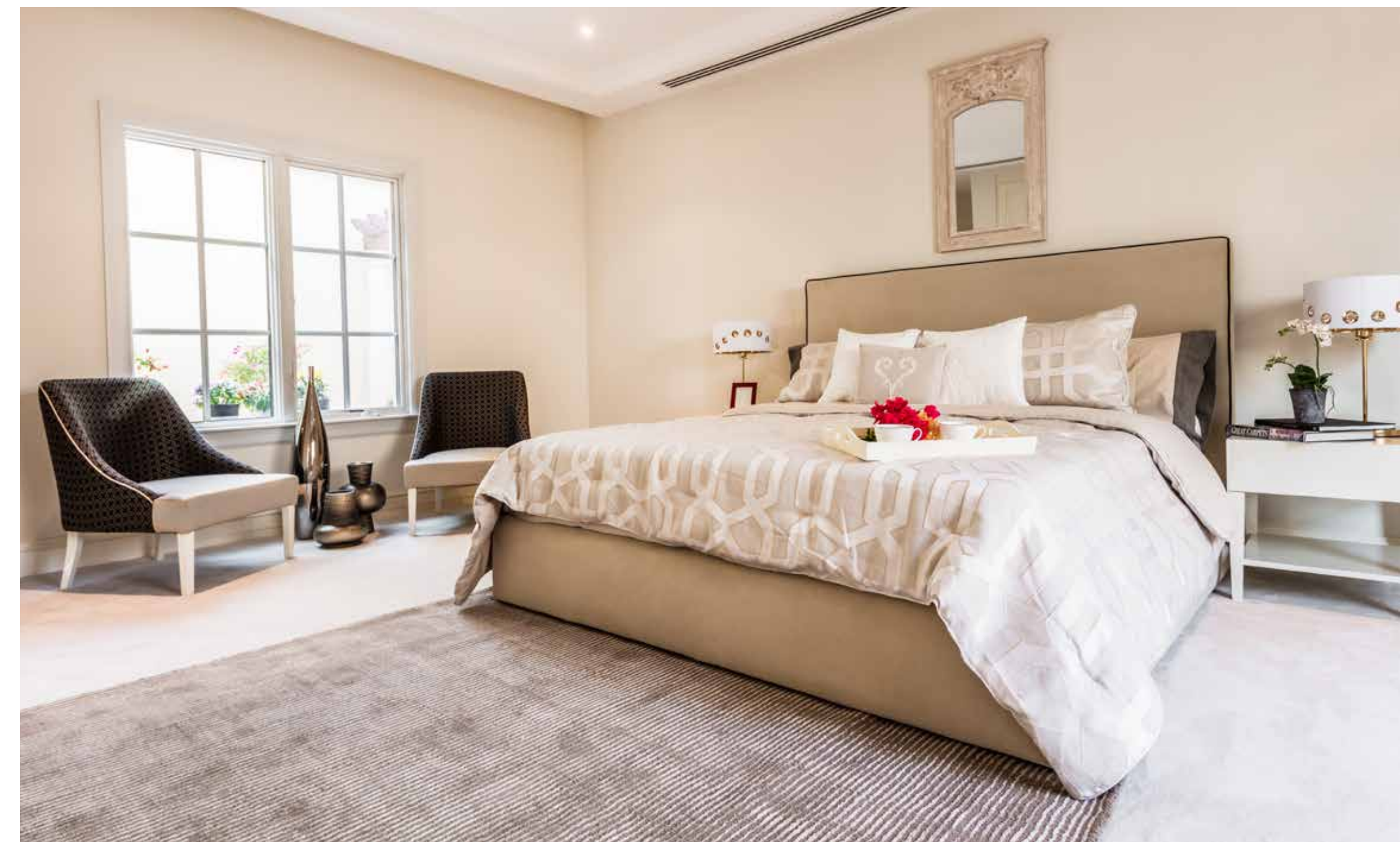
FINISHING

DESIGN IN EVERY DETAIL

From Poggenpohl kitchens to Miele appliances and interior options designed by B&B Italia, the world's leading interior and furniture company, every home features all the requirements of modern living.

FEATURES:

- Poggenpohl
- Bang & Olufsen
- B&B Italia
- Legrand
- LexSystems



FINISHING

LIGHTING AND ACCESS CONTROL SYSTEMS

With Legrand system, homeowners, can monitor their home through network cameras or control daily functions like turning lights and A/C on and off, through the use of intelligent switches, touch screens, remote controls, internet or PDAs.



FINISHING



- Laminated, glossy lacquered or wooden veneer finish and ironmongery to Blum
- Black granite counter tops with top of the range built-in white goods
- Porcelain flooring
- Decorative extraction hood

FINISHING



- Glazed porcelain flooring throughout living areas, bedrooms and hallways
- Polished Creama Marfil marble for the staircase
- Natural granite for entrance steps and porch

