



ZEEEST





# ZEEST



Escrow Account:





### Contemporary Community Living at International City - Phase 3

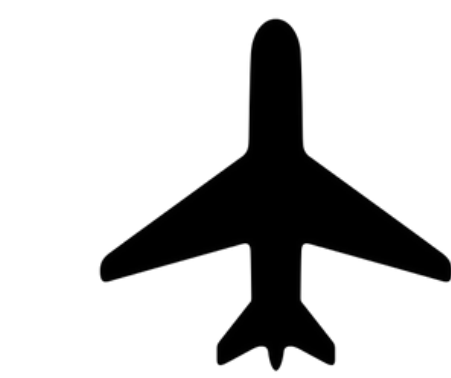
True to its name, is a melting pot of the divergent nationalities and cultures making Dubai modern and cosmopolitan. Initiated with a vision to provide affordable yet stylish living experience to more than 60,000 people, International City has been successful in helping realize the dreams of many to own a home in Dubai.



5 Minutes to Sheikh Mohammad Bin Zayed Road

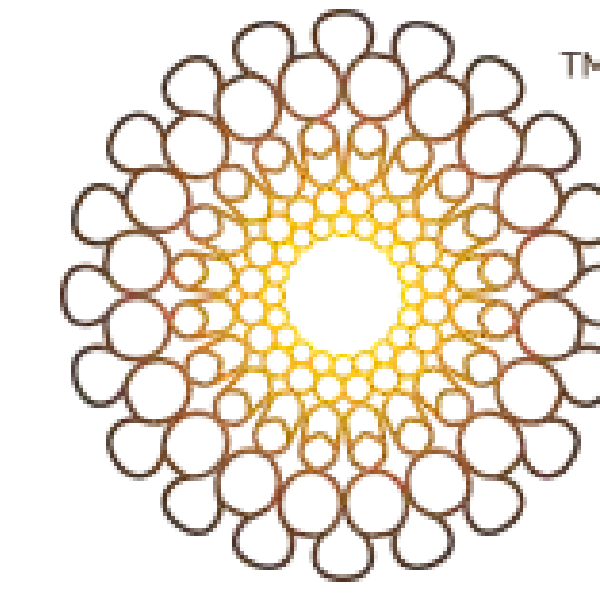


15 Minutes to Burj Khalifa



15 Minutes to Airport





إكسبو 2020 EXPO 2020  
دبي، الإمارات العربية المتحدة  
DUBAI, UNITED ARAB EMIRATES

## Explore City Full of Opportunitites

Dubai has a reputation for being a visionary city; a first-mover that shapes its own destiny. The spirit of possible and wise foresight of its leaders have been hallmarks of Dubai's economic progress over the past decades. And what once was a tranquil town has rapidly grown into a premier leisure and business tourism destination, becoming the record-breaking and innovative city it is today - the crossroads of opportunity.

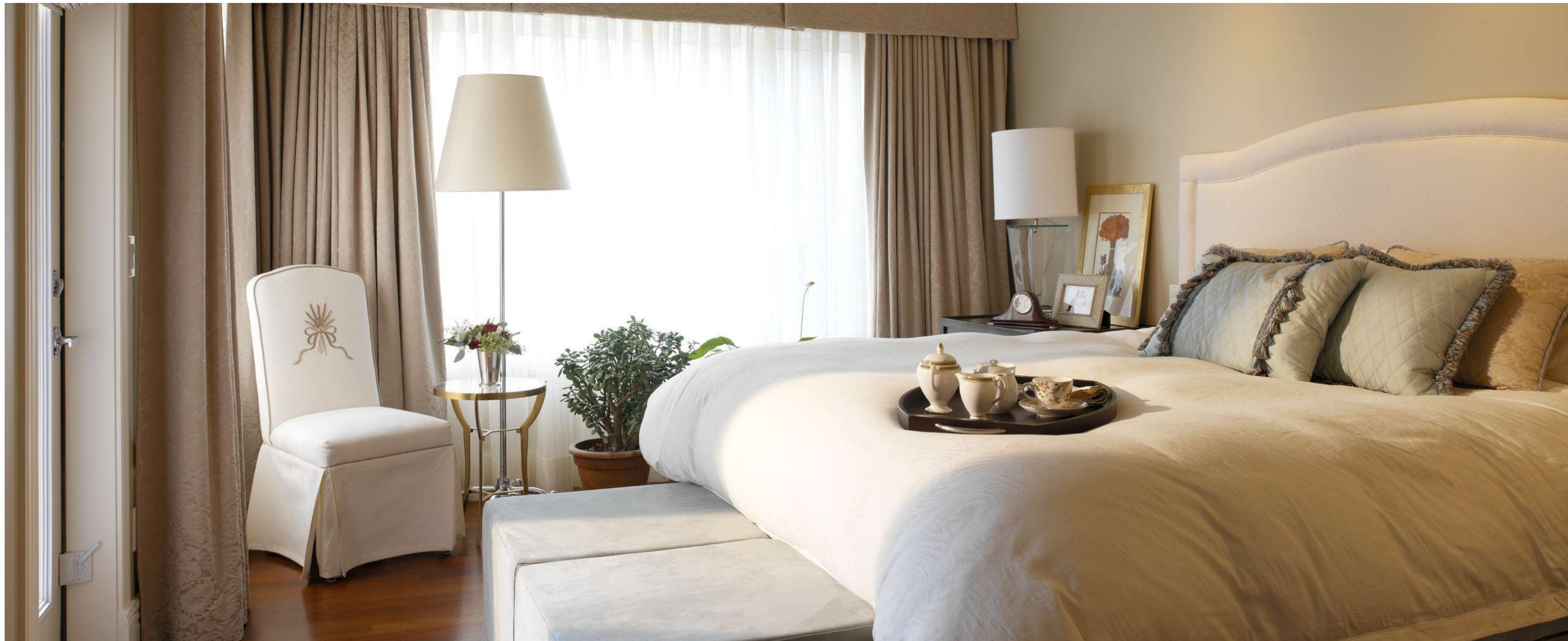
hyperloop | one





MS ZEEST is an upcoming project in International City - Phase 3 Dubai by MS Homes Developers. The project aim is to provide affordable living luxury in Dubai. Own your home in the heart of Dubai where it is easily accessible to all destinations in Dubai. A flawless urban living equipped with modern facilities.





## AFFORDABLE LUXURY LIVING

Affordable Luxury Studio, 1 & 2 bedroom apartments. Freehold master development in the heart of Dubai. Presenting MS ZEEST in International City Dubai. What's more, you can transport yourself to the buzzing city life within moments.







## WORLD CLASS FACILITIES & AMENITIES

With its luxurious and contemporary design, MS ZEEST is going to be a landmark at the International City community. With high-class facilities, it gives residents choice of a more personal space in addition to giving the project a constantly changing facade. Unwind in the pool or hit the highly equipped fitness center. Health club amenities, retail spaces, and landscape areas within MS ZEEST have made a lavish lifestyle that residents of all ages can enjoy.





# FLOORPLANS



1BHK - TYPE 1

KEY PLAN



FIRST FLOOR PLAN

**MS ZEEST**

SUITE AREA : 41.40 SQ.M  
 TERRACE AREA : 5.06 SQ.M  
 TOTAL AREA : 46.46 SQ.M



1BHK - TYPE 2

KEY PLAN



FIRST FLOOR PLAN

**MS ZEEST**

SUITE AREA : 61.25 SQ.M  
 TERRACE AREA : 12.46 SQ.M  
 TOTAL AREA : 87.74 SQ.M



# FLOORPLANS



MS ZEEST

SUITE AREA : 41.40 SQ.M  
 TERRACE AREA : 5.06 SQ.M  
 TOTAL AREA : 46.46 SQ.M

STUDIO - TYPE 1

KEY PLAN



FIRST FLOOR PLAN



MS ZEEST

SUITE AREA : 38.37 SQ.M  
 TERRACE AREA : 5.75 SQ.M  
 TOTAL AREA : 44.12 SQ.M

STUDIO - TYPE 2

KEY PLAN



FIRST FLOOR PLAN

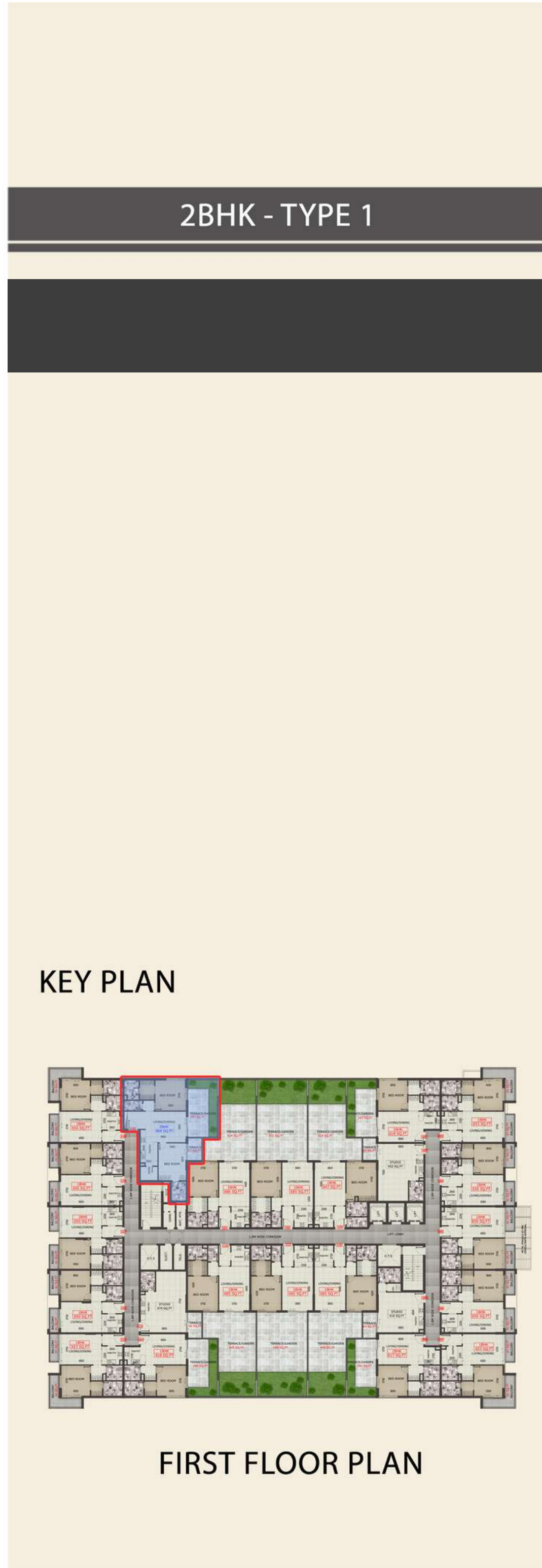


# FLOORPLANS



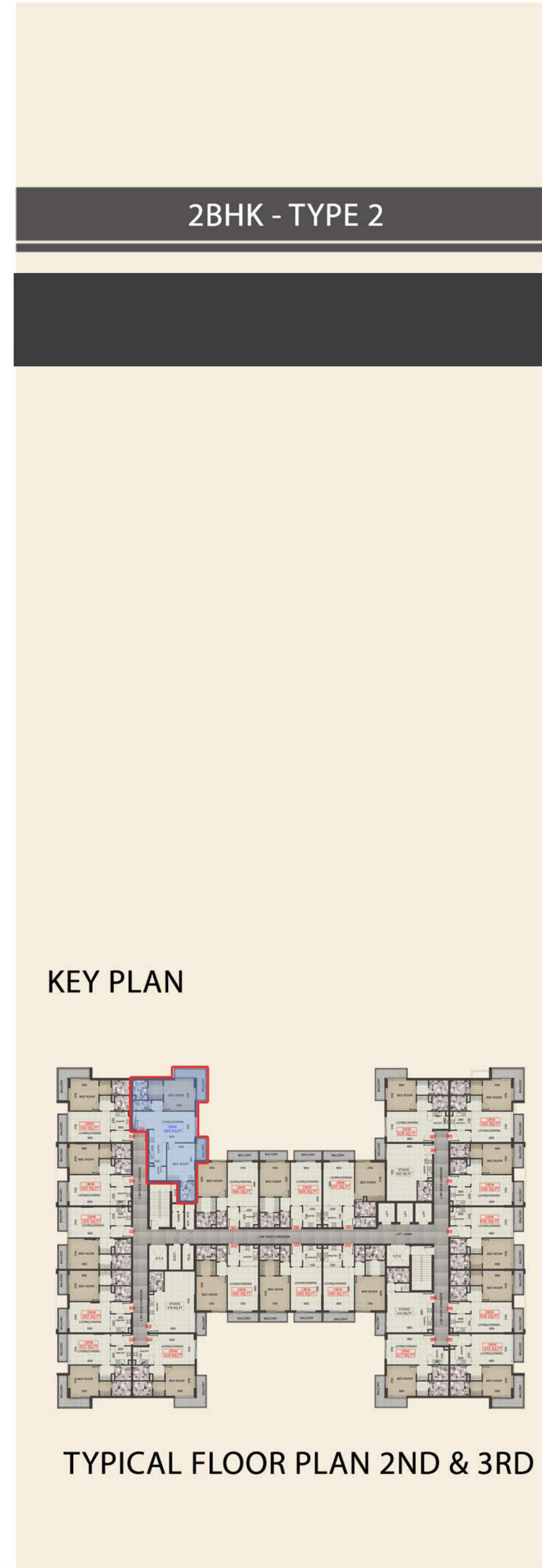
**MS ZEEST**

SUITE AREA : 90.17 SQ.M  
 TERRACE AREA : 32.19 SQ.M  
 TOTAL AREA : 122.36 SQ.M



**MS ZEEST**

SUITE AREA : 90.23 SQ.M  
 TERRACE AREA : 11.02 SQ.M  
 TOTAL AREA : 101.28 SQ.M







ZEEST

Project By:



Escrow Account:

