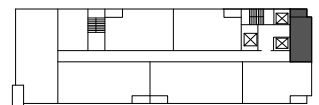


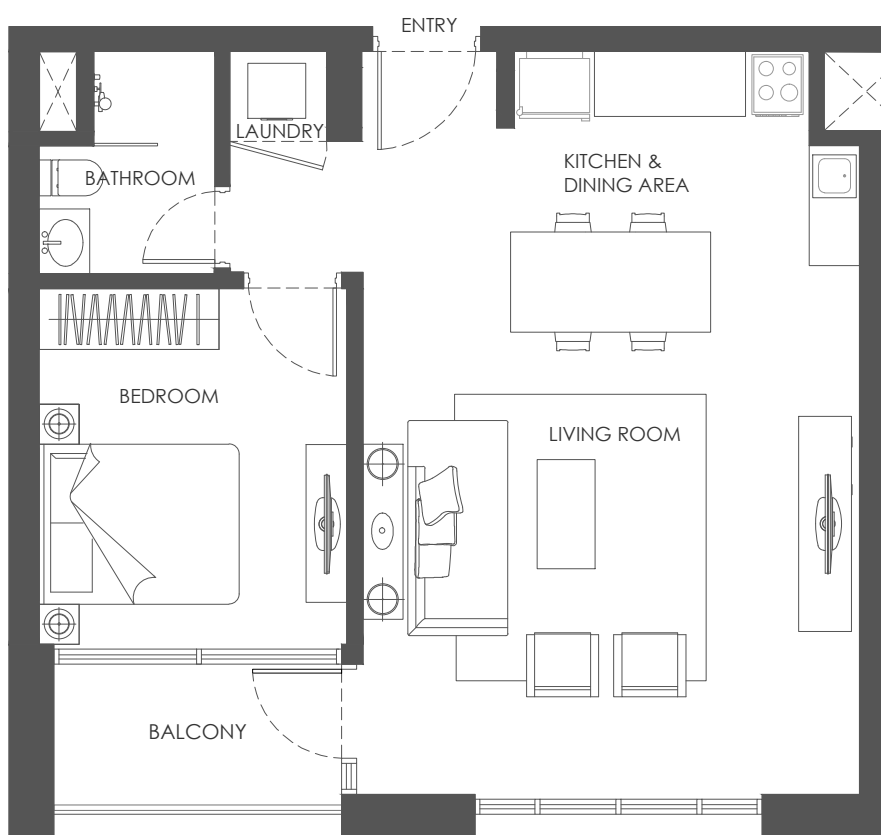
Key Plan



APARTMENT AREA: 38.20m²
NET AREA: 33.12m²
BALCONY AREA: 5.08m²



DISCLAIMER: Note that this floor plan was produced prior to the completion of construction and is indicative only and not to scale. Changes may be made during development, with areas, fittings, finishes and specification subject to change without notice in accordance with the Sale and Purchase Agreement. The furniture depicted is not included with any sale and should not be taken to indicate the final positions of power points, TV connections and the like. Prospective purchasers must rely on their own enquiries from time to time. Bulkheads necessary for services and structure are not depicted.



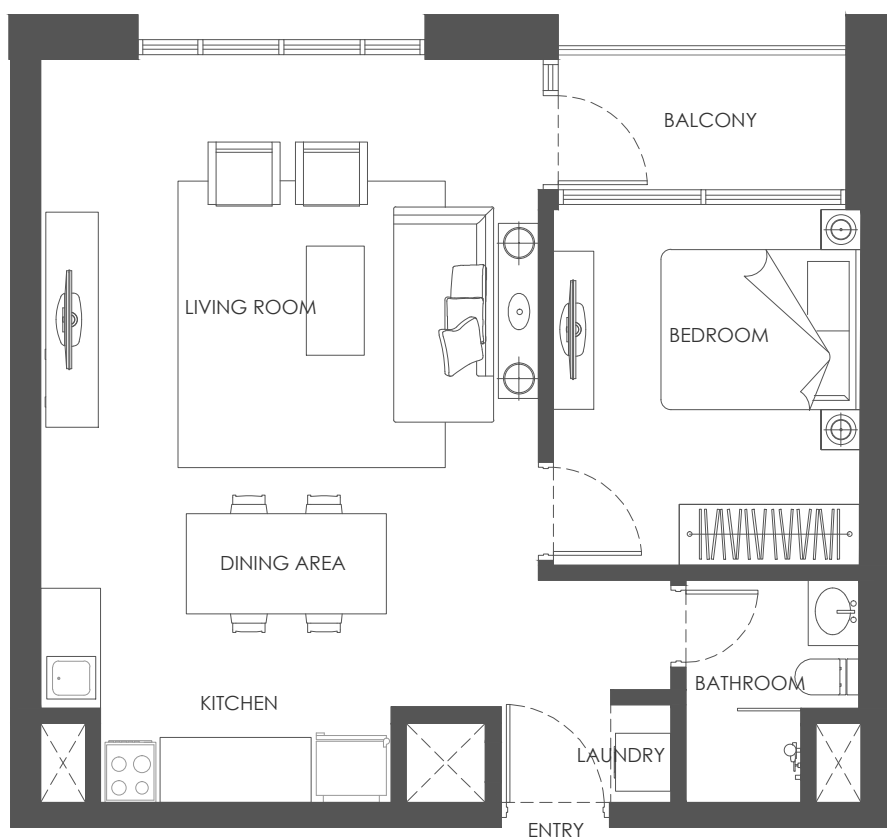
Key Plan



APARTMENT AREA: 64.21m²
NET AREA: 59.09m²
BALCONY AREA: 5.12m²



DISCLAIMER: Note that this floor plan was produced prior to the completion of construction and is indicative only and not to scale. Changes may be made during development, with areas, fittings, finishes and specification subject to change without notice in accordance with the Sale and Purchase Agreement. The furniture depicted is not included with any sale and should not be taken to indicate the final positions of power points, TV connections and the like. Prospective purchasers must rely on their own enquiries from time to time. Bulkheads necessary for services and structure are not depicted.



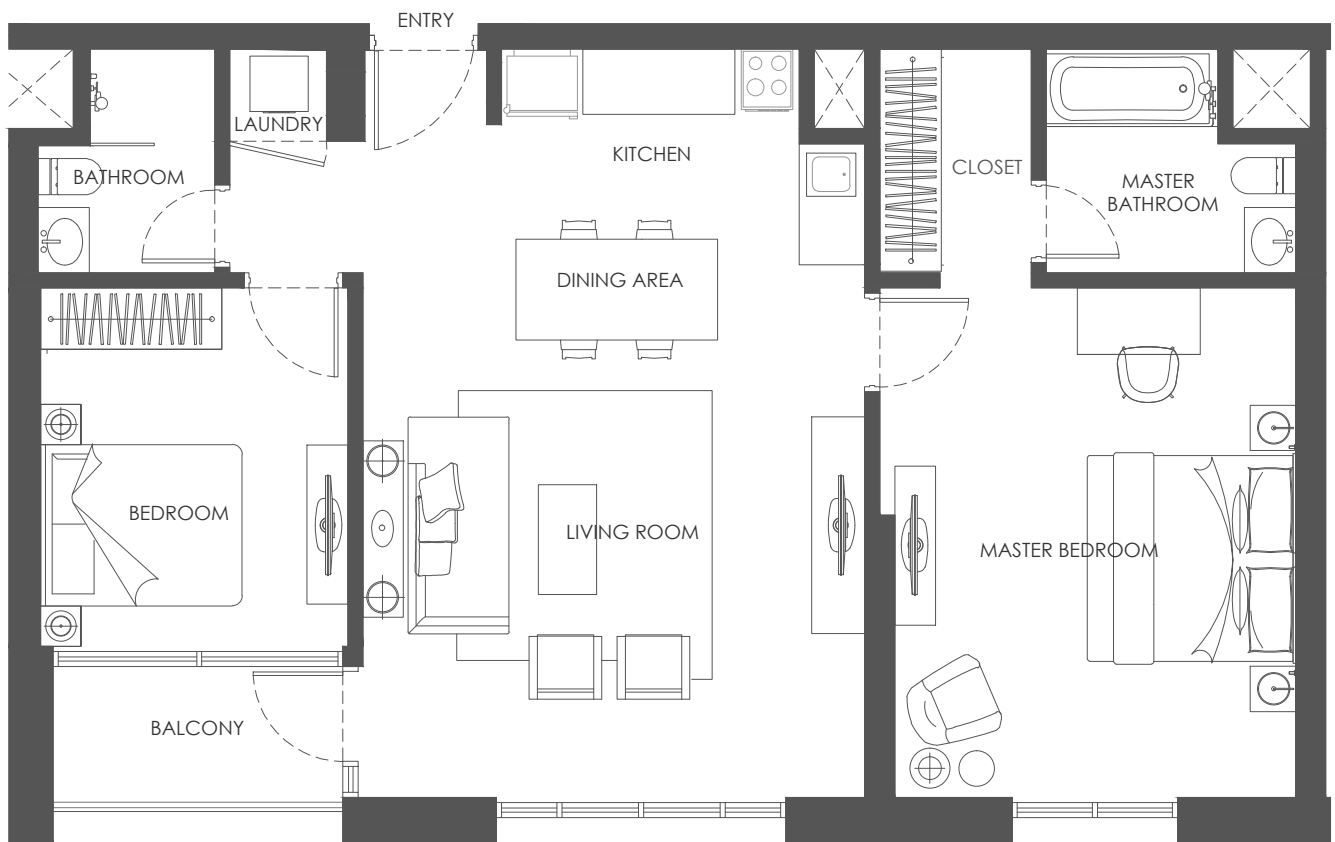
Key Plan



APARTMENT AREA: 63.02m²
NET AREA: 57.89m²
BALCONY AREA: 5.13m²



DISCLAIMER: Note that this floor plan was produced prior to the completion of construction and is indicative only and not to scale. Changes may be made during development, with areas, fittings, finishes and specification subject to change without notice in accordance with the Sale and Purchase Agreement. The furniture depicted is not included with any sale and should not be taken to indicate the final positions of power points, TV connections and the like. Prospective purchasers must rely on their own enquiries from time to time. Bulkheads necessary for services and structure are not depicted.



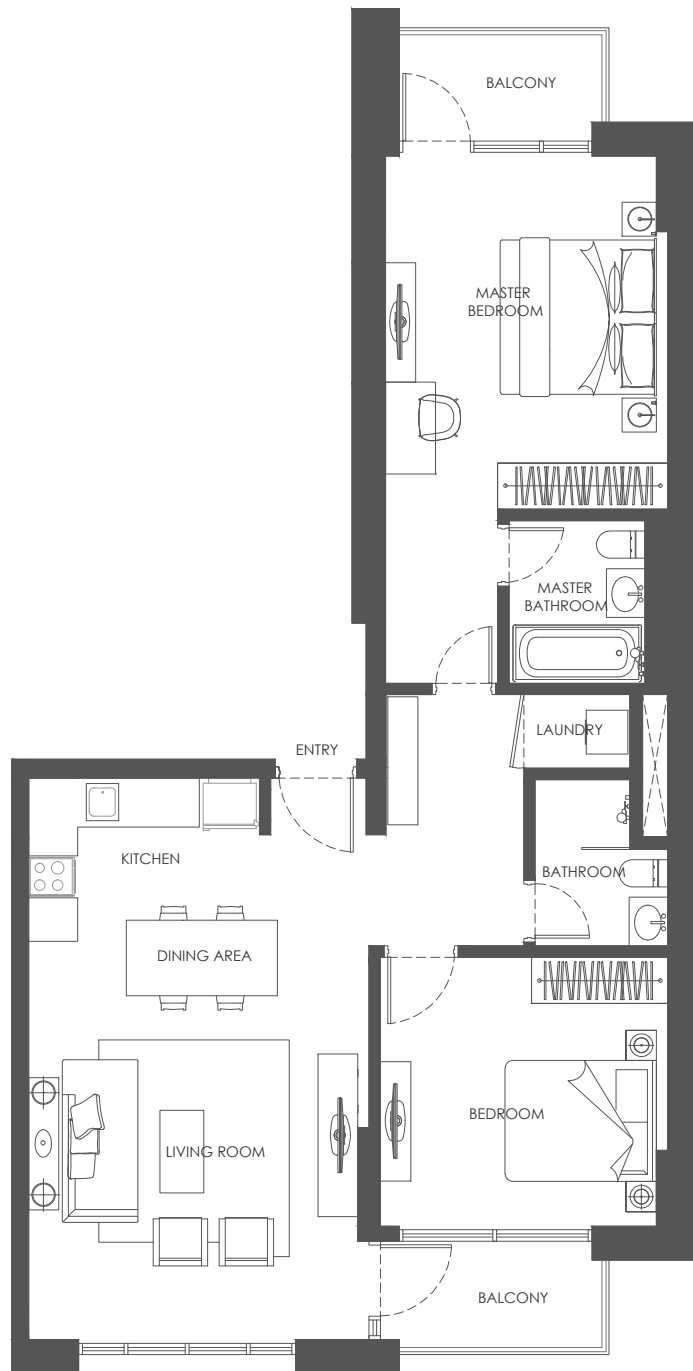
Key Plan



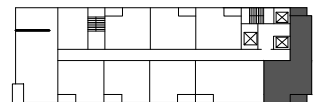
APARTMENT AREA: 95.99m²
NET AREA: 90.87m²
BALCONY AREA: 5.12m²



DISCLAIMER: Note that this floor plan was produced prior to the completion of construction and is indicative only and not to scale. Changes may be made during development, with areas, fittings, finishes and specification subject to change without notice in accordance with the Sale and Purchase Agreement. The furniture depicted is not included with any sale and should not be taken to indicate the final positions of power points, TV connections and the like. Prospective purchasers must rely on their own enquiries from time to time. Bulkheads necessary for services and structure are not depicted.



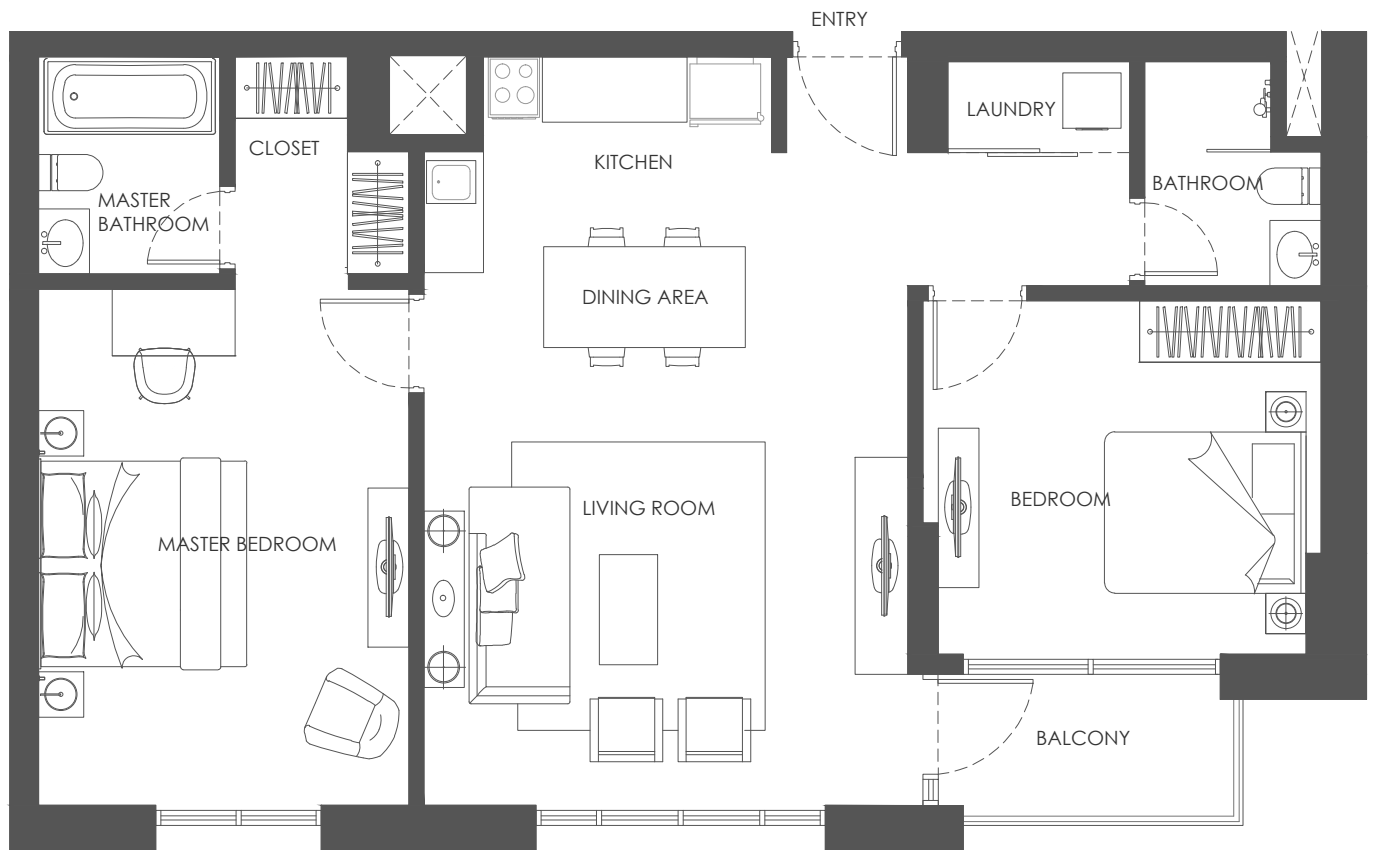
Key Plan



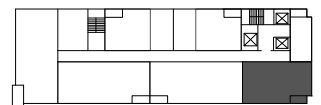
APARTMENT AREA: 103.58m²
NET AREA: 93.50m²
BALCONY AREA: 10.08m²



DISCLAIMER: Note that this floor plan was produced prior to the completion of construction and is indicative only and not to scale. Changes may be made during development, with areas, fittings, finishes and specification subject to change without notice in accordance with the Sale and Purchase Agreement. The furniture depicted is not included with any sale and should not be taken to indicate the final positions of power points, TV connections and the like. Prospective purchasers must rely on their own enquiries from time to time. Bulkheads necessary for services and structure are not depicted.



Key Plan



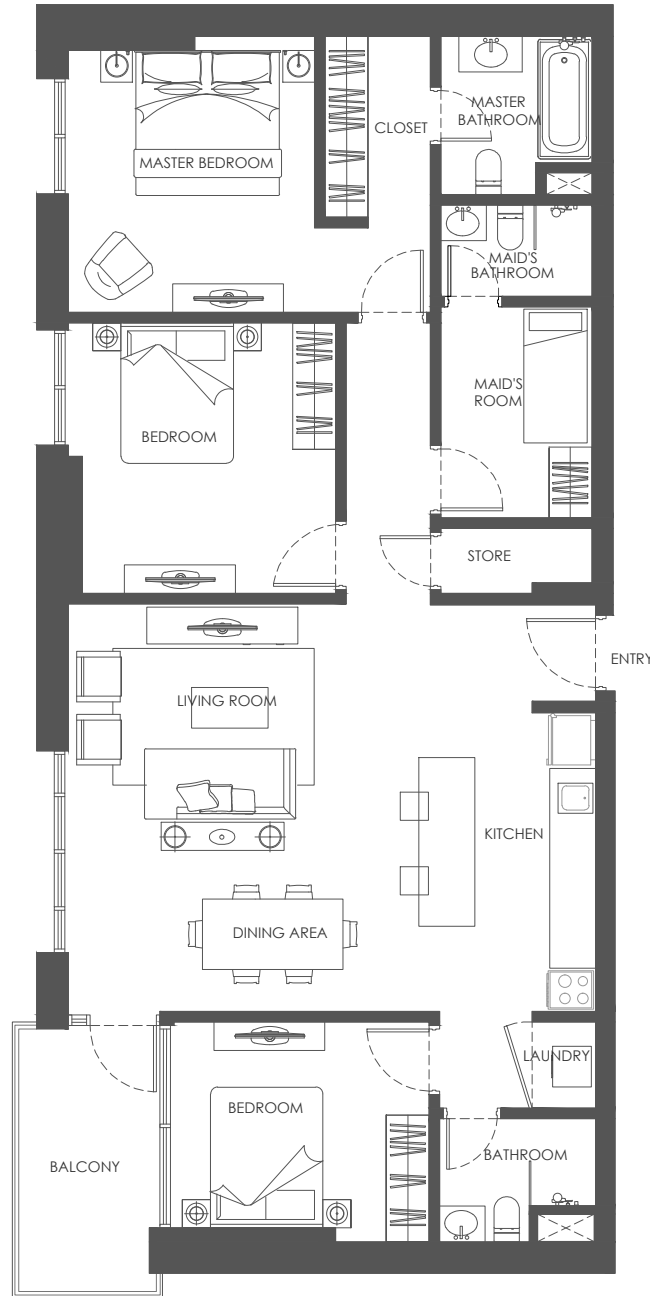
APARTMENT AREA: 97.25m²

NET AREA: 92.25m²

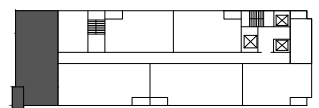
BALCONY AREA: 5.00m²



DISCLAIMER: Note that this floor plan was produced prior to the completion of construction and is indicative only and not to scale. Changes may be made during development, with areas, fittings, finishes and specification subject to change without notice in accordance with the Sale and Purchase Agreement. The furniture depicted is not included with any sale and should not be taken to indicate the final positions of power points, TV connections and the like. Prospective purchasers must rely on their own enquiries from time to time. Bulkheads necessary for services and structure are not depicted.



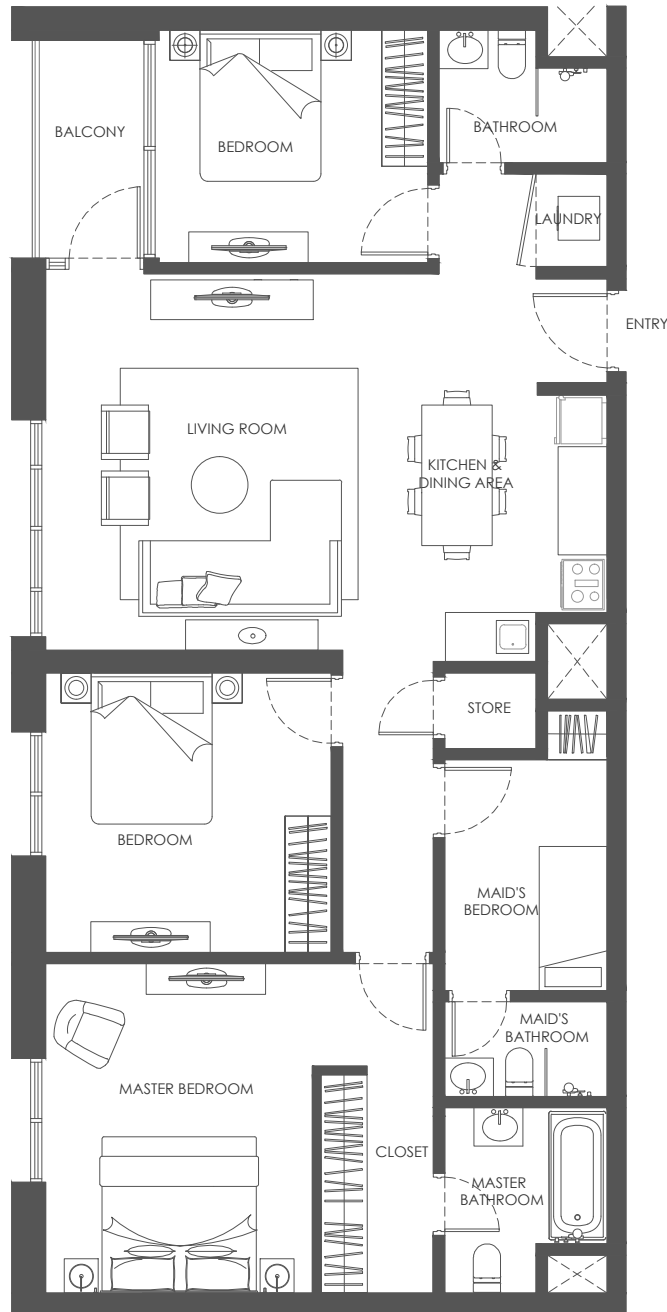
Key Plan



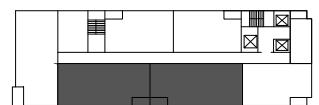
APARTMENT AREA: 137.19m²
NET AREA: 128.69m²
BALCONY AREA: 8.50m²



DISCLAIMER: Note that this floor plan was produced prior to the completion of construction and is indicative only and not to scale. Changes may be made during development, with areas, fittings, finishes and specification subject to change without notice in accordance with the Sale and Purchase Agreement. The furniture depicted is not included with any sale and should not be taken to indicate the final positions of power points, TV connections and the like. Prospective purchasers must rely on their own enquiries from time to time. Bulkheads necessary for services and structure are not depicted.



Key Plan



APARTMENT AREA: 128.02m²
NET AREA: 122.92m²
BALCONY AREA: 5.10m²



DISCLAIMER: Note that this floor plan was produced prior to the completion of construction and is indicative only and not to scale. Changes may be made during development, with areas, fittings, finishes and specification subject to change without notice in accordance with the Sale and Purchase Agreement. The furniture depicted is not included with any sale and should not be taken to indicate the final positions of power points, TV connections and the like. Prospective purchasers must rely on their own enquiries from time to time. Bulkheads necessary for services and structure are not depicted.