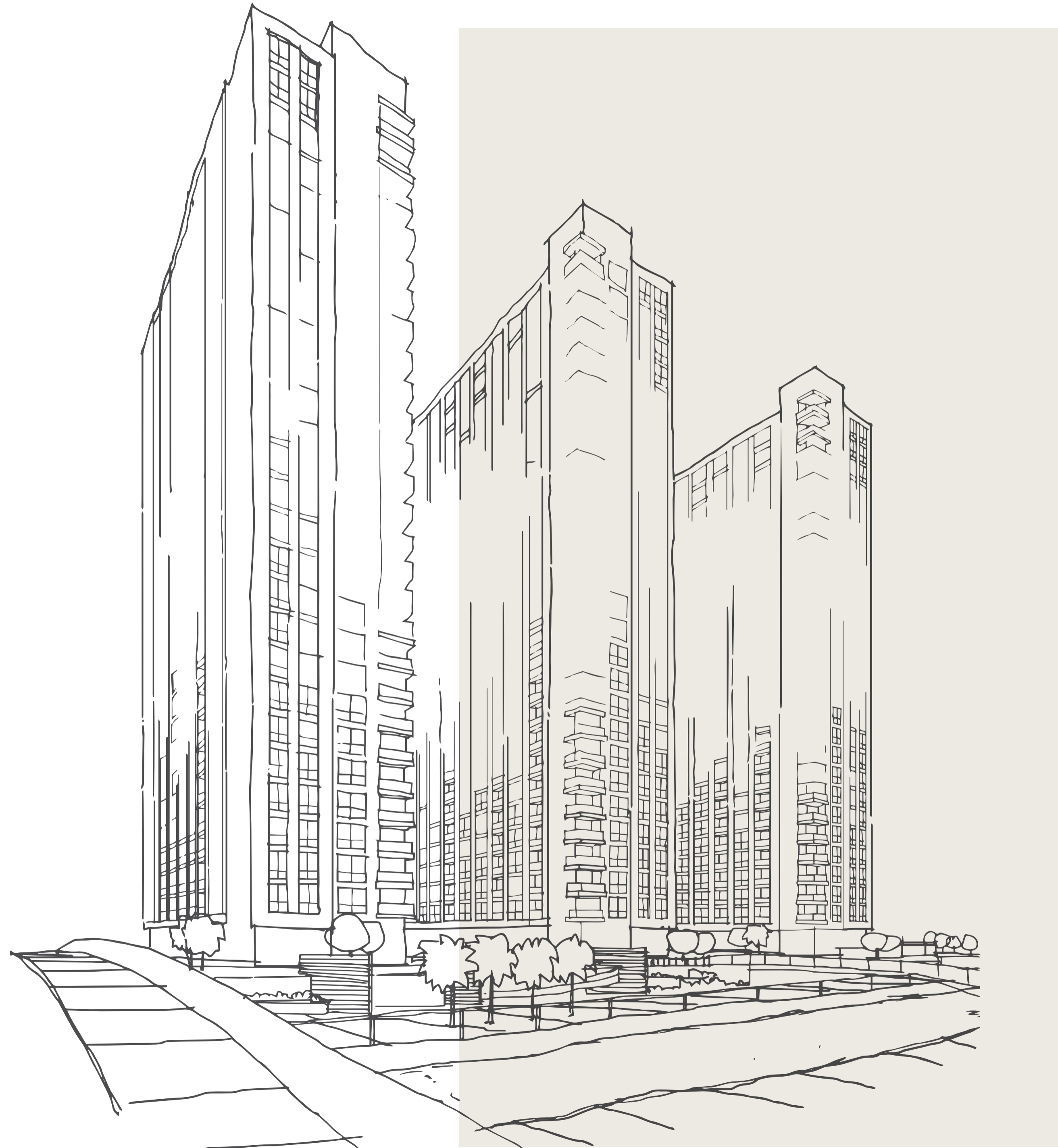


—

## THE BIGGER PICTURE

Each phase will comprise of three 26 storey towers surrounded by green spaces and pools, split in half by the canal.

—



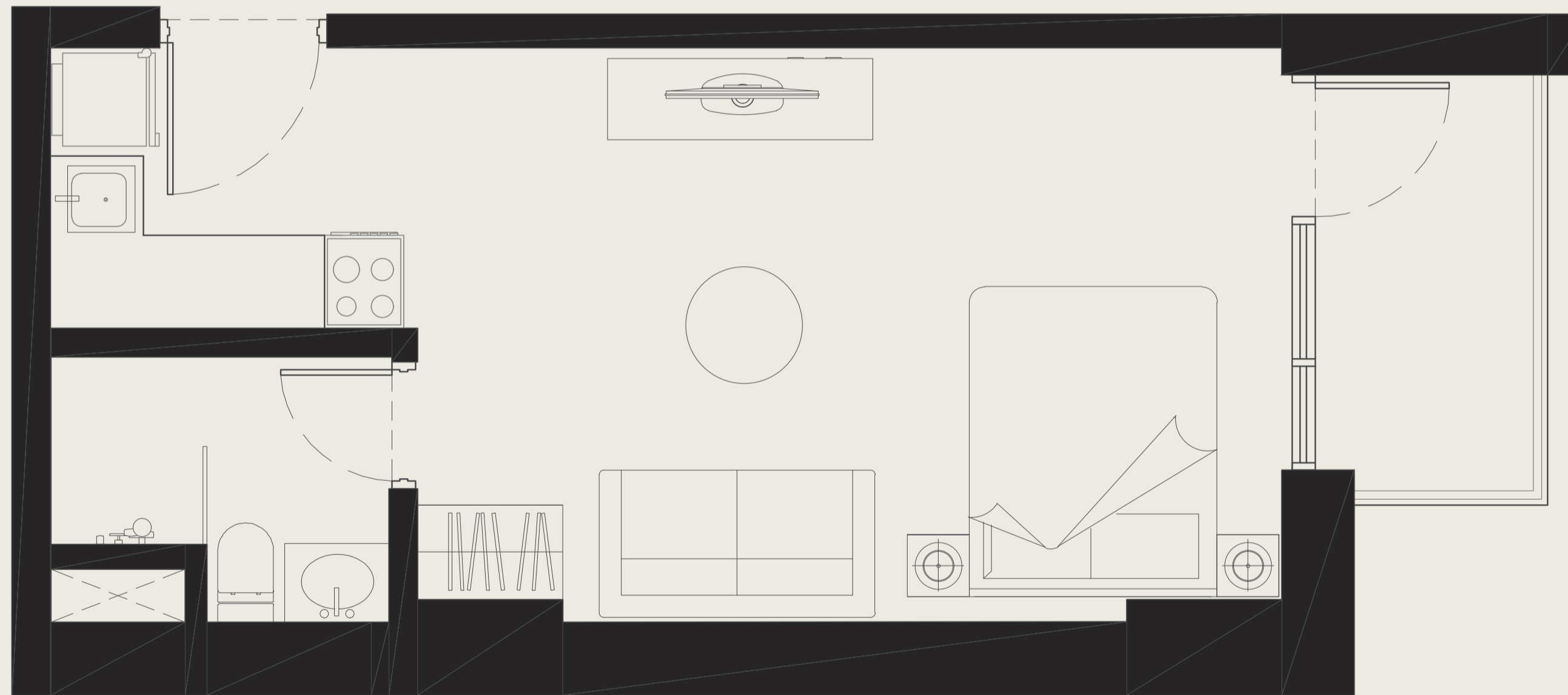


# FIND THE PERFECT PLAN

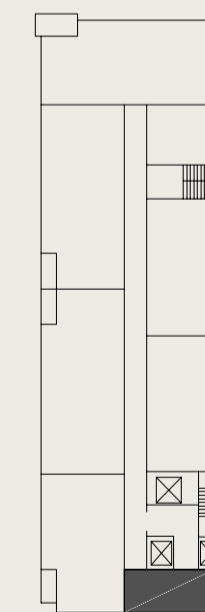


# S

## STUDIO FLOOR PLAN



Average Size: 38m<sup>2</sup>  
\*Apartment sizes are indicative only and are based on Aldar's internal measurement guidelines.



KEY PLAN

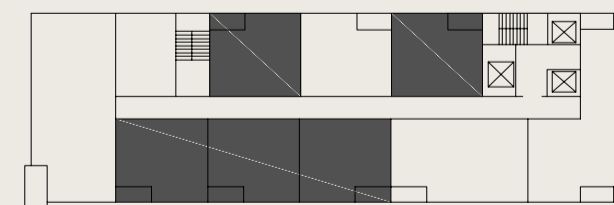
**Disclaimer:** Note that this floor plan was produced prior to the completion of construction and is indicative only and not to scale. Changes may be made during the development and areas, fittings, finishes and specifications are subject to change without notice in accordance with the provision of the Contract of Sale. The furniture depicted is not included with any sale and should not be taken to indicate the final positions of power points, TV connections etc. Prospective purchasers must rely on their own enquiries from time to time. Bulkheads necessary for services and structure are not depicted.



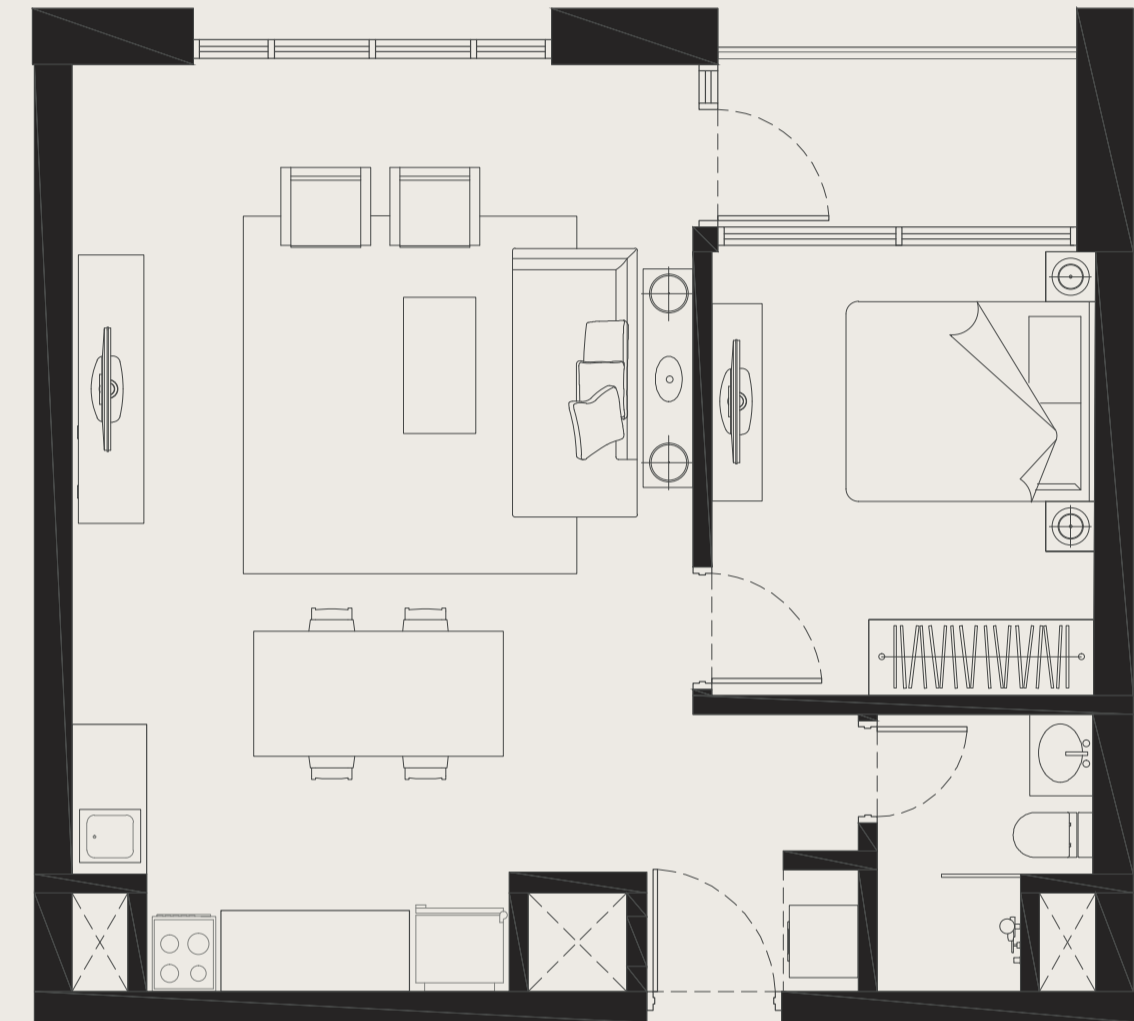
## BEDROOM FLOOR PLANS



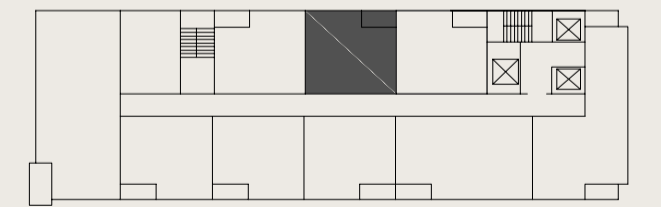
**A PLANS - Average Size: 64m<sup>2</sup>**  
\*Apartment sizes are indicative only and are based on Aldar's internal measurement guidelines.



KEY PLAN



**B PLANS - Average Size: 63m<sup>2</sup>**  
\*Apartment sizes are indicative only and are based on Aldar's internal measurement guidelines.



KEY PLAN

**Disclaimer:** Note that this floor plan was produced prior to the completion of construction and is indicative only and not to scale. Changes may be made during the development and areas, fittings, finishes and specifications are subject to change without notice in accordance with the provision of the Contract of Sale. The furniture depicted is not included with any sale and should not be taken to indicate the final positions of power points, TV connections etc. Prospective purchasers must rely on their own enquiries from time to time. Bulkheads necessary for services and structure are not depicted.



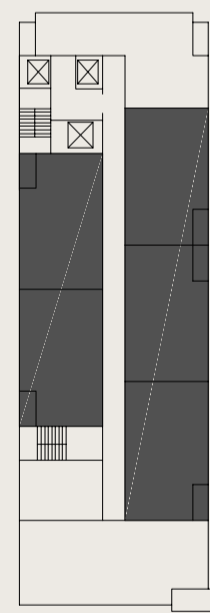


# 2

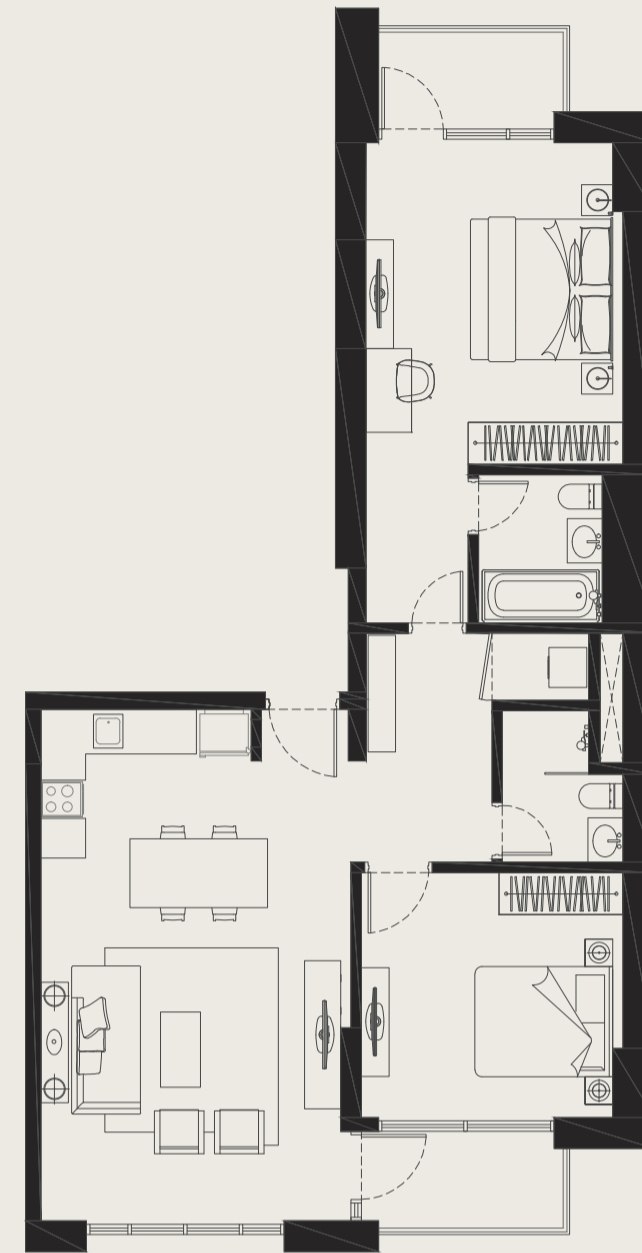
## BEDROOM FLOOR PLANS



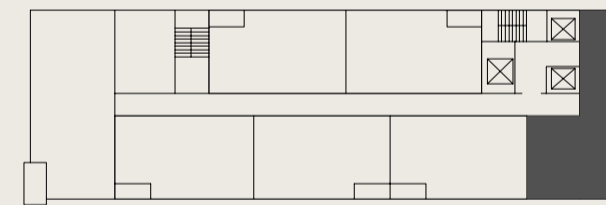
**A PLANS - Average Size: 96m<sup>2</sup>\***  
\*Apartment sizes are indicative only and are based on Aldar's internal measurement guidelines.



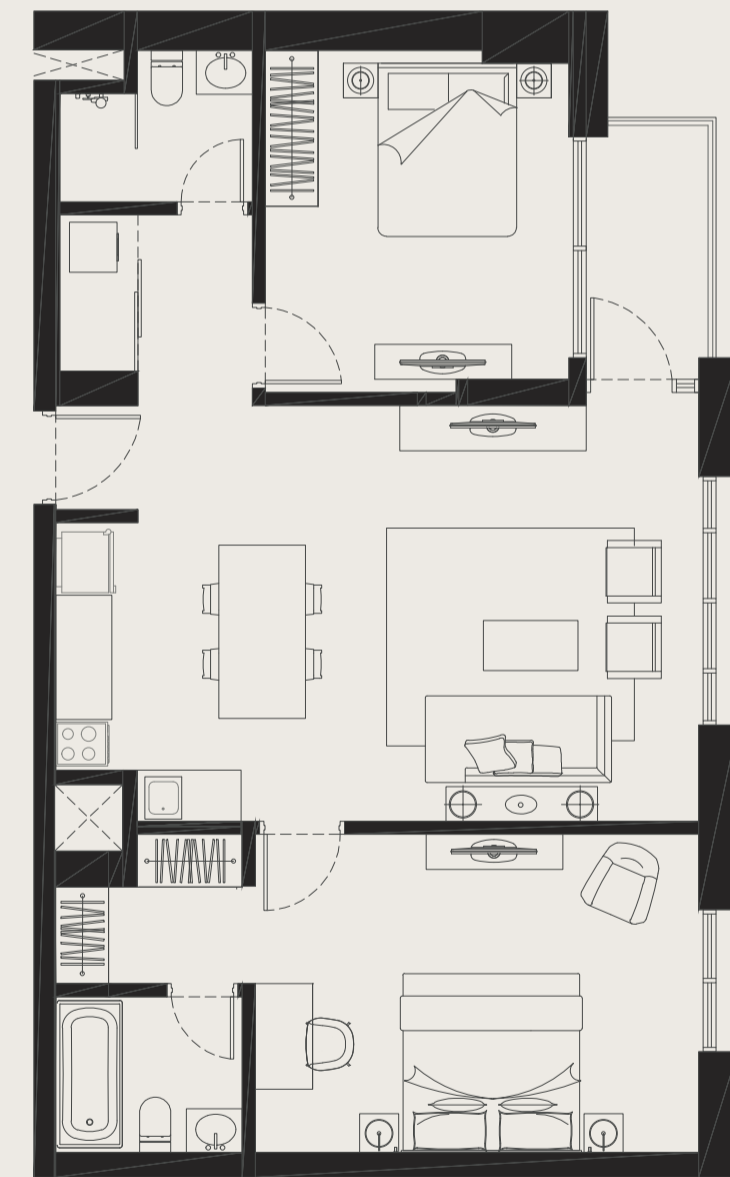
KEY PLAN



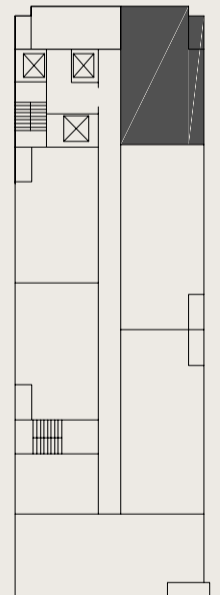
**B PLANS - Average Size: 104m<sup>2</sup>\***  
\*Apartment sizes are indicative only and are based on Aldar's internal measurement guidelines.



KEY PLAN



**C PLANS - Average Size: 97m<sup>2</sup>\***  
\*Apartment sizes are indicative only and are based on Aldar's internal measurement guidelines.

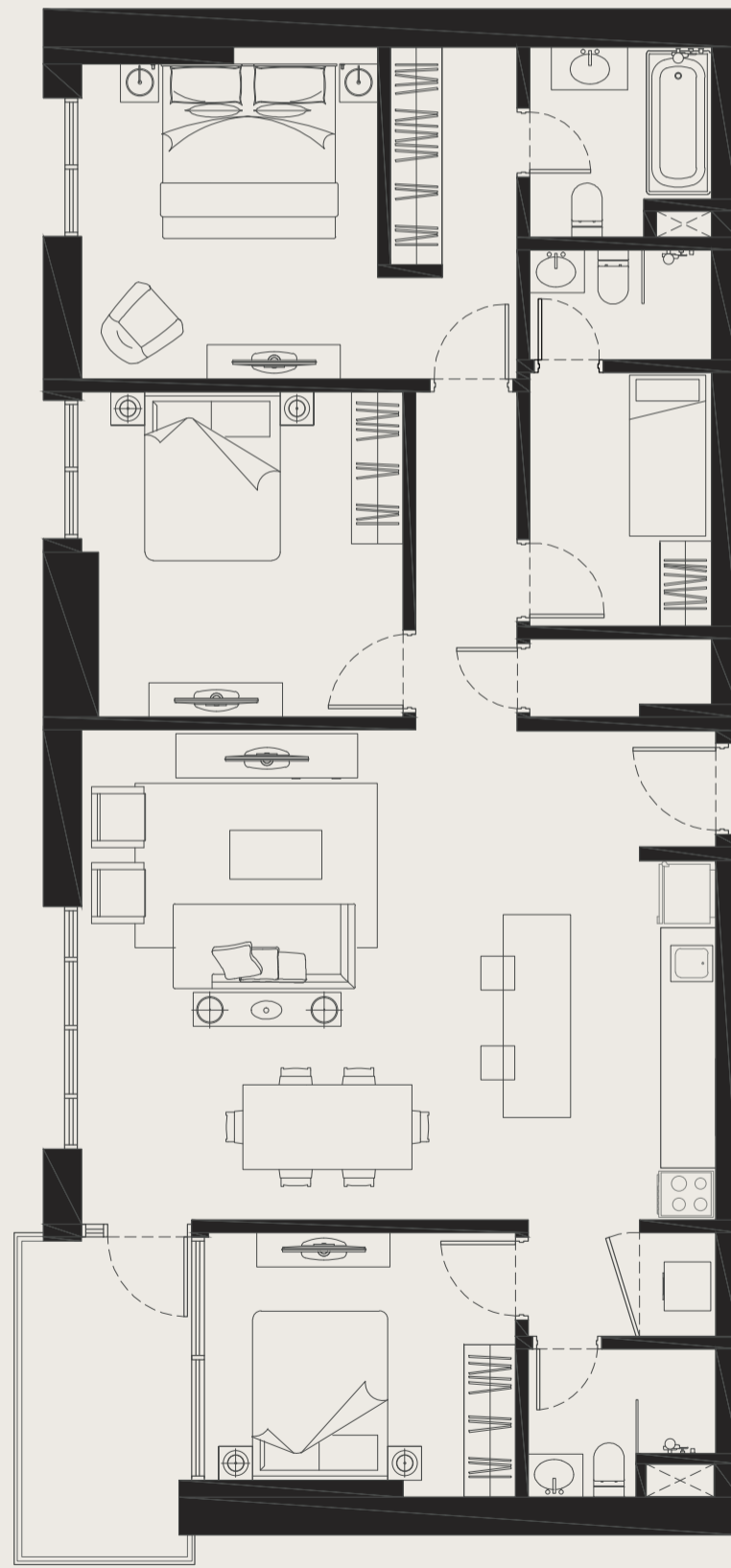


KEY PLAN

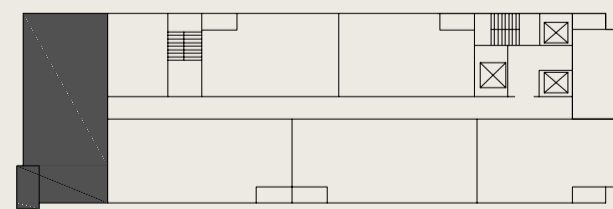
**Disclaimer:** Note that this floor plan was produced prior to the completion of construction and is indicative only and not to scale. Changes may be made during the development and areas, fittings, finishes and specifications are subject to change without notice in accordance with the provision of the Contract of Sale. The furniture depicted is not included with any sale and should not be taken to indicate the final positions of power points, TV connections etc. Prospective purchasers must rely on their own enquiries from time to time. Bulkheads necessary for services and structure are not depicted.

# 3

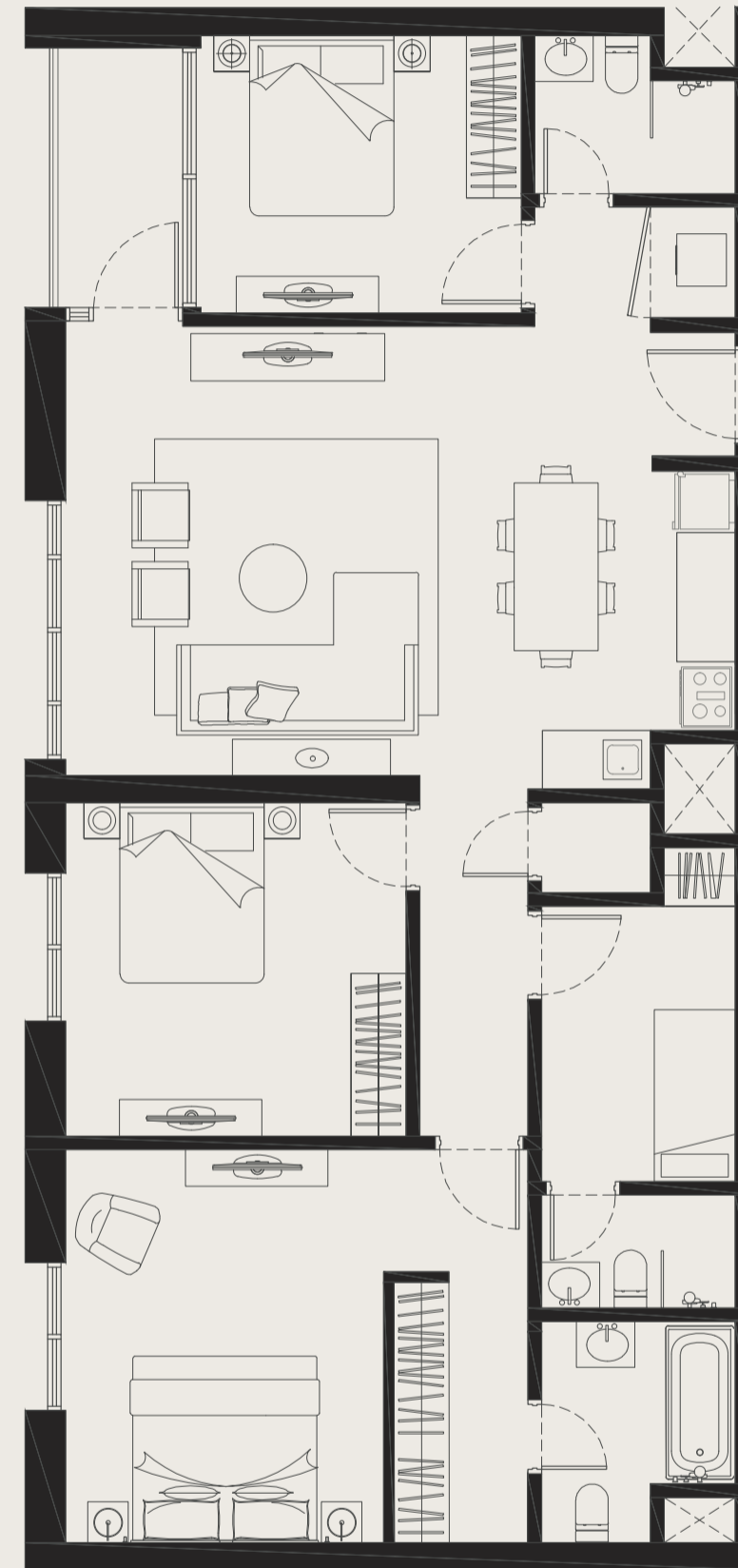
## BEDROOM FLOOR PLANS



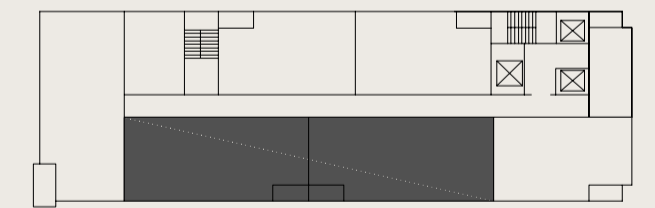
**A PLANS - Average Size: 137m<sup>2</sup>**  
\*Apartment sizes are indicative only and are based on Aldar's internal measurement guidelines.



KEY PLAN



**B PLANS - Average Size: 128m<sup>2</sup>**  
\*Apartment sizes are indicative only and are based on Aldar's internal measurement guidelines.



KEY PLAN

**Disclaimer:** Note that this floor plan was produced prior to the completion of construction and is indicative only and not to scale. Changes may be made during the development and areas, fittings, finishes and specifications are subject to change without notice in accordance with the provision of the Contract of Sale. The furniture depicted is not included with any sale and should not be taken to indicate the final positions of power points, TV connections etc. Prospective purchasers must rely on their own enquiries from time to time. Bulkheads necessary for services and structure are not depicted.