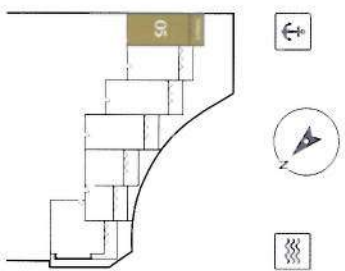
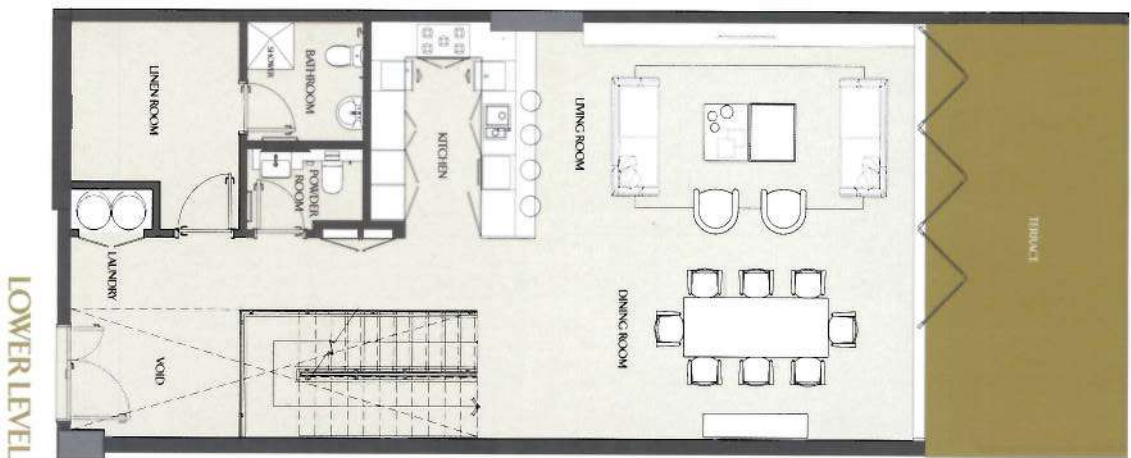


# TWO BEDROOM VILLA

## VILLA 05 - 301 | PODIUM 3 & 4

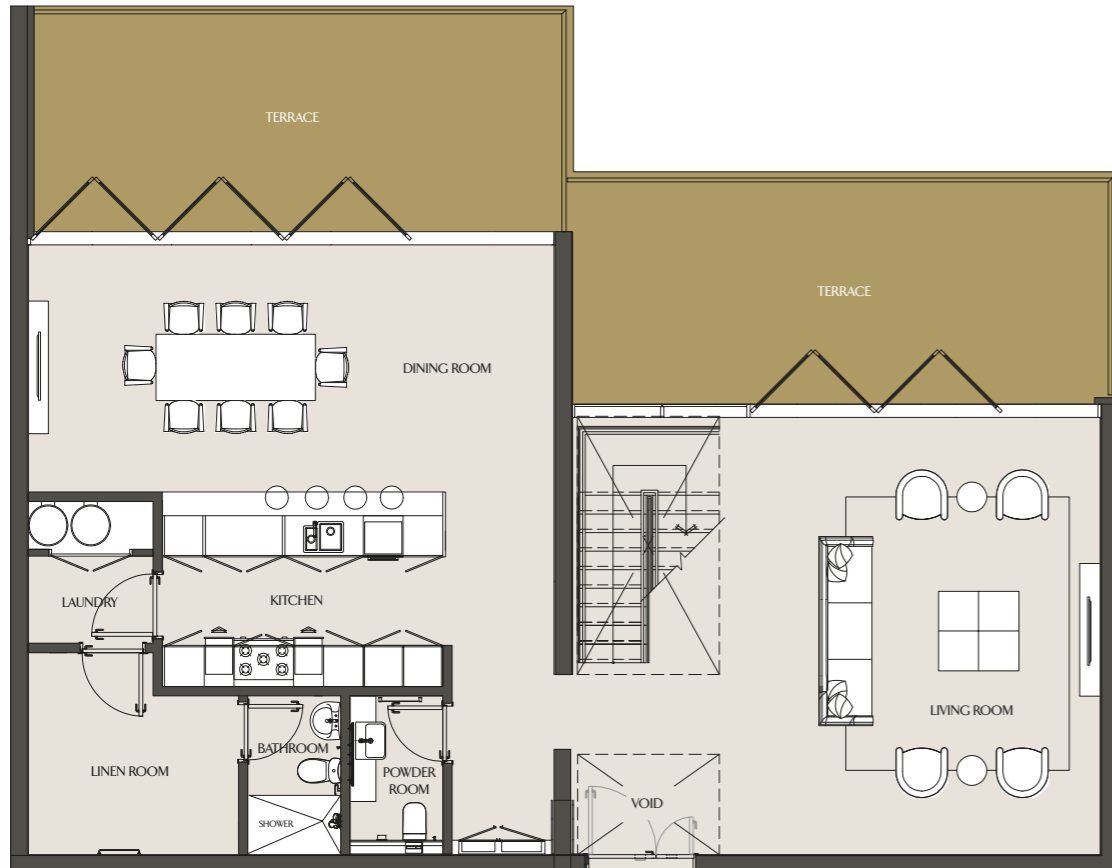


Apartment Area	199.61 m <sup>2</sup>	2148.58 ft <sup>2</sup>
Balcony Area	26.01 m <sup>2</sup>	279.97 ft <sup>2</sup>
Total Area	225.62 m <sup>2</sup>	2428.55 ft <sup>2</sup>

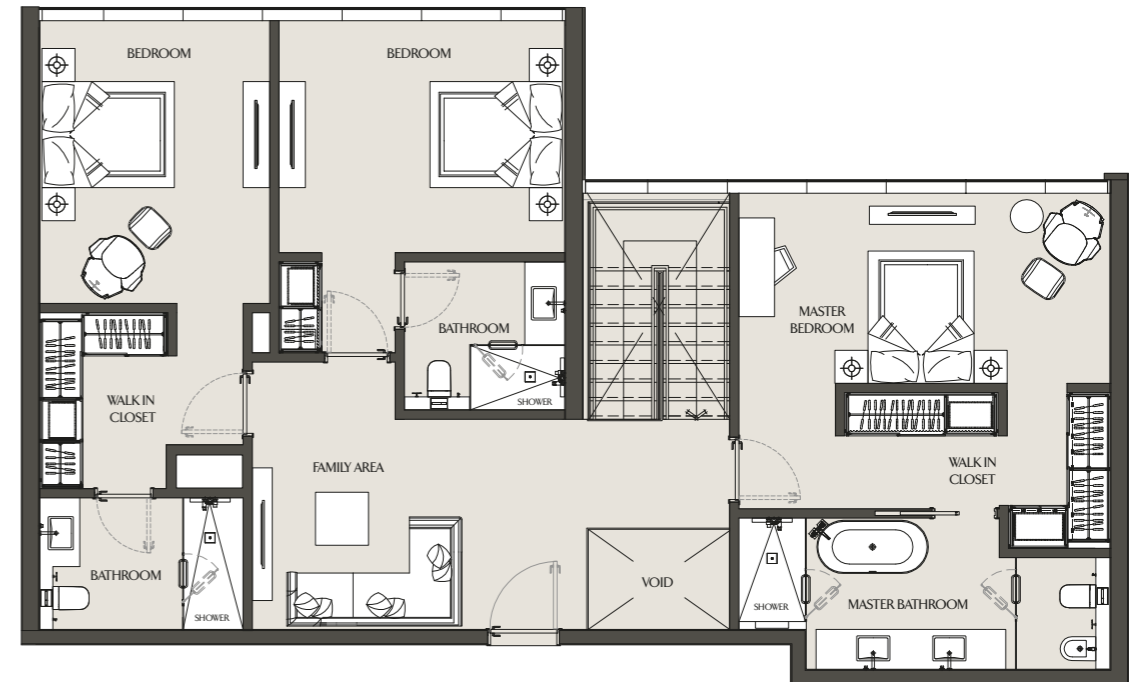
Drawings are provided by our consultants. All dimensions, features and amenities are approximate at time of printing. Actual area may vary from stated area. Drawings not to scale. E&OE. The developer reserves the right to make revisions to the floor plans and any features, materials and dimensions mentioned without further notice.

# THREE BEDROOM VILLA

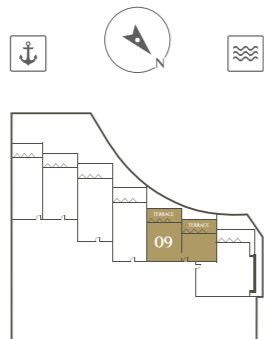
## VILLA 09 - 305 | PODIUM 3 & 4



LOWER LEVEL



UPPER LEVEL



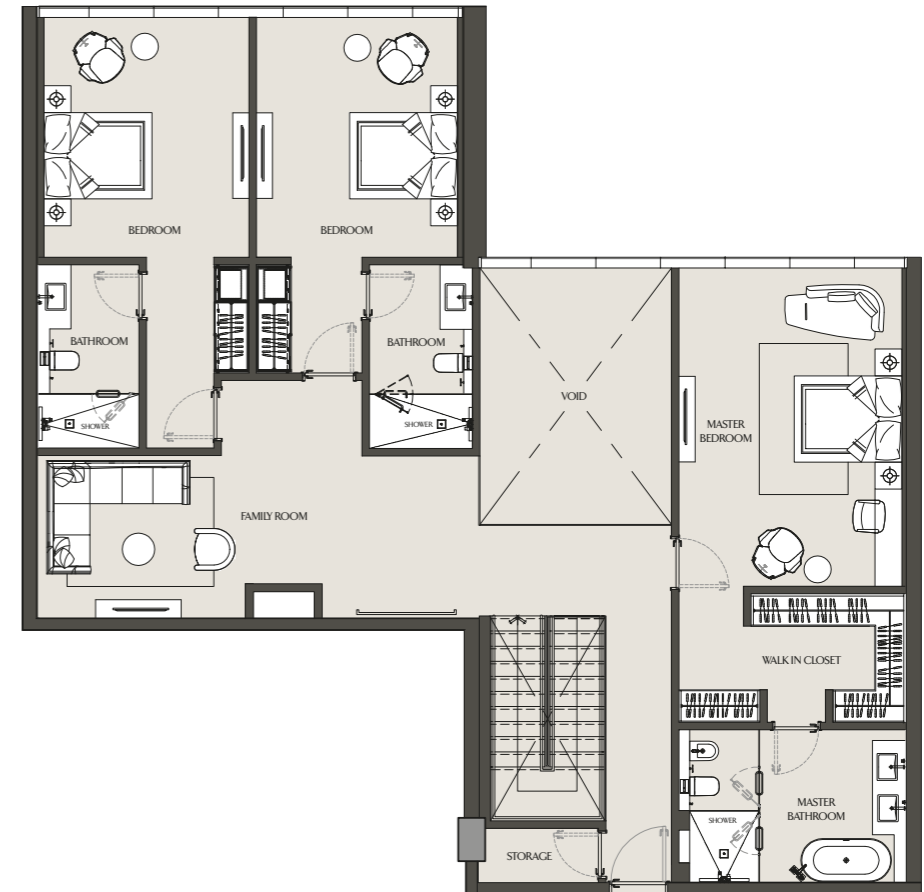
Apartment Area	256.69 m <sup>2</sup>	2762.99 ft <sup>2</sup>
Balcony Area	56.90 m <sup>2</sup>	612.47 ft <sup>2</sup>
Total Area	313.59 m <sup>2</sup>	3375.45 ft <sup>2</sup>

# FOUR BEDROOM VILLA

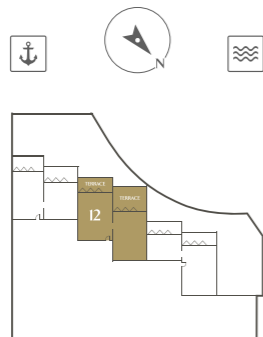
## VILLA 12 - 502 | PODIUM 5 & 6



LOWER LEVEL



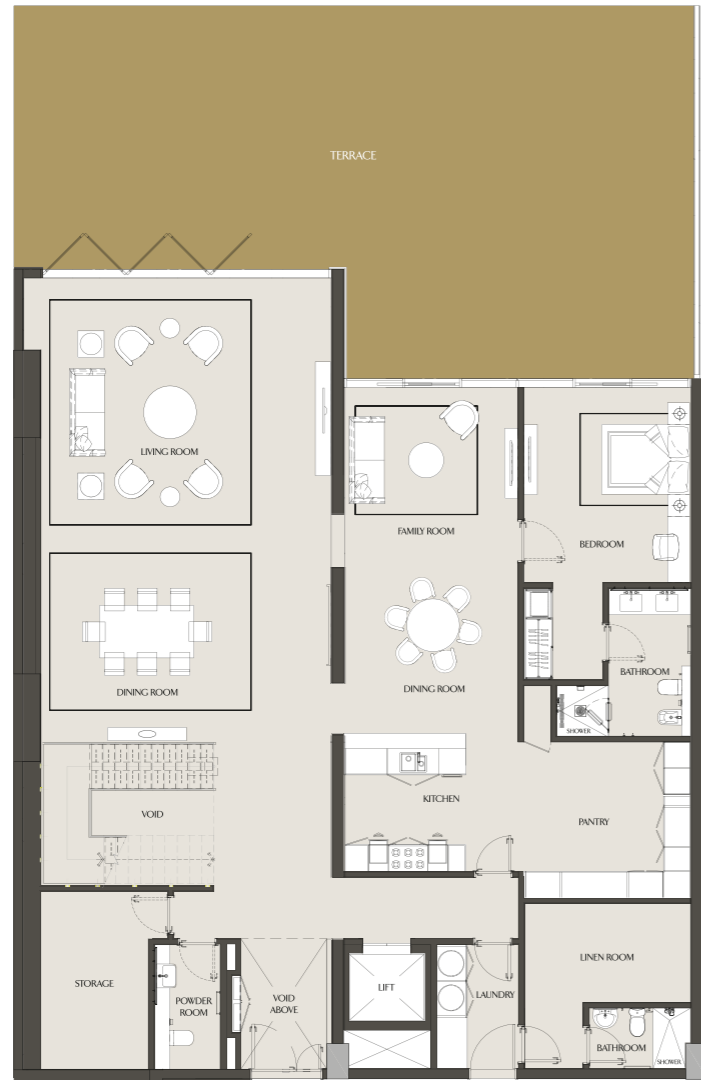
UPPER LEVEL



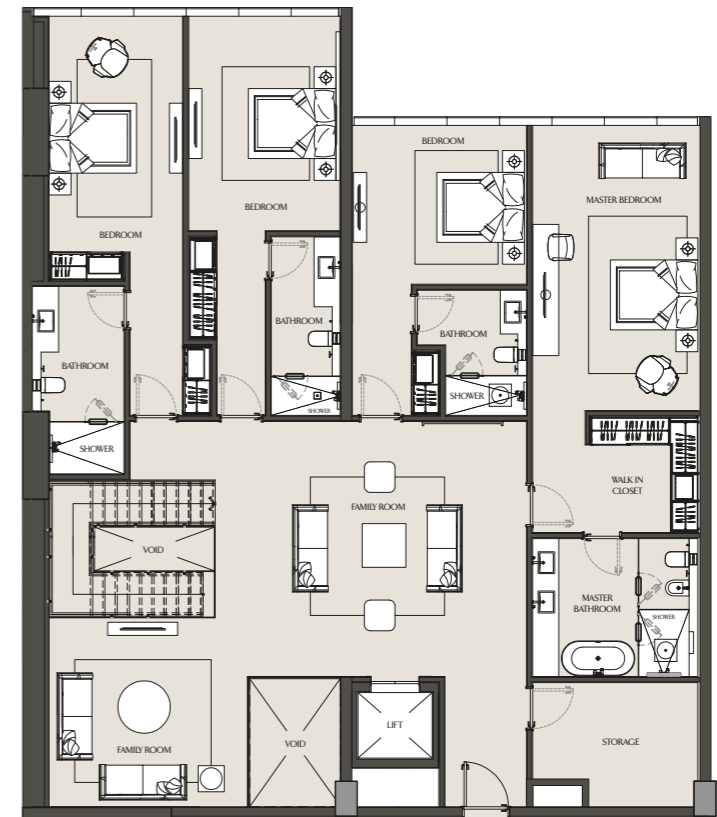
Apartment Area	349.82 m <sup>2</sup>	3765.43 ft <sup>2</sup>
Balcony Area	79.50 m <sup>2</sup>	855.73 ft <sup>2</sup>
Total Area	429.32 m <sup>2</sup>	4621.16 ft <sup>2</sup>

# FIVE BEDROOM VILLA

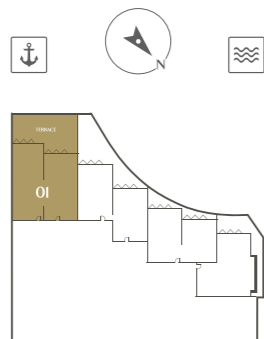
## VILLA 01 - 101 | PODIUM 1 & 2



LOWER LEVEL



UPPER LEVEL



Apartment Area	500.69 m <sup>2</sup>	5389.38 ft <sup>2</sup>
Balcony Area	129.63 m <sup>2</sup>	1395.33 ft <sup>2</sup>
Total Area	630.32 m <sup>2</sup>	6784.71 ft <sup>2</sup>