

Jumeirah
Living
MARINA GATE

JUMEIRAH™ COMES TO THE MARINA





WELCOME TO JUMEIRAH LIVING MARINA GATE

Jumeirah Living Marina Gate combines the Jumeirah Group's luxury hospitality experience with Select Group's commitment to creating an exceptional standard of living. Never before have Marina residents had access to Jumeirah's impeccable standards for a curated lifestyle, coupled with the exceptional attractions found in one of Dubai's most captivating locations. 104 serviced apartments, 389 private residences and 15 villas present a range of exclusive opportunities to live a life characterised by unprecedented quality and flair.



CELEBRATED CITY

Dubai is a world-famous destination renowned for its stunning skyline and a wealth of exceptional attractions that delight residents and visitors in this dynamic city throughout the year. With a record-breaking 20 million people expected to travel to the iconic emirate by the arrival of the World Expo in 2020, Dubai continues to push the boundaries of creativity to develop an unparalleled environment to live, work and play.

Awash with historical and contemporary charms, as well as breath-taking natural and architectural beauty, the city blends its rich history with an ambitious future and the splendid environment is home to over 200 nationalities. World-class retail outlets, gourmet dining spots, an engaging cultural scene and exhilarating leisure pursuits all come together in one unforgettable destination where the best can only get better.



THE NEIGHBOURHOOD

Jumeirah Living Marina Gate represents the third and final tower of the prestigious Marina Gate community located at the original entrance to Dubai Marina, a place where residents can relax and appreciate the best that life has to offer in a luxurious waterfront setting. The picture perfect position affords stunning views over the emerald bay with its array of yachts and a palm-lined promenade set against the beautiful backdrop of the majestic Marina skyline.

Life at the heart of one of Dubai's most sought after locations is the height of convenience with the tram, metro and water taxis only a short walk away, and excellent transport links connecting residents to the rest of this fascinating city. A boat ride around the World Islands, Burj Al Arab Jumeirah or the other marina inlets provides a refreshing perspective of the area from the crystal clear seas.





MARINA'S BEST AT YOUR DOORSTEP

Direct access to the cosmopolitan Marina Walk opens up a world of leisure options for residents. Countless places to dine at, five-star hotels, intimate coffee shops and a variety of retail outlets including international supermarkets and stylish clothing boutiques add to the development's charm.

Anyone who appreciates an active lifestyle will love going for a jog around the water's edge, riding a bike along the bustling promenade or spending the day fishing on the Arabian Gulf. Beauty salons, a polyclinic, children's play areas, and a nursery school complete the offering for an outstanding family-friendly environment.



THE VIEW

Nowhere captures the inspiring oceanic views quite like Dubai Marina. Towering skyscrapers overlook calm, blue waters and whichever level you gaze out, Jumeirah Living Marina Gate brings the panoramic waterfront spectacle to life from inside one of the area's most impressive new landmarks.

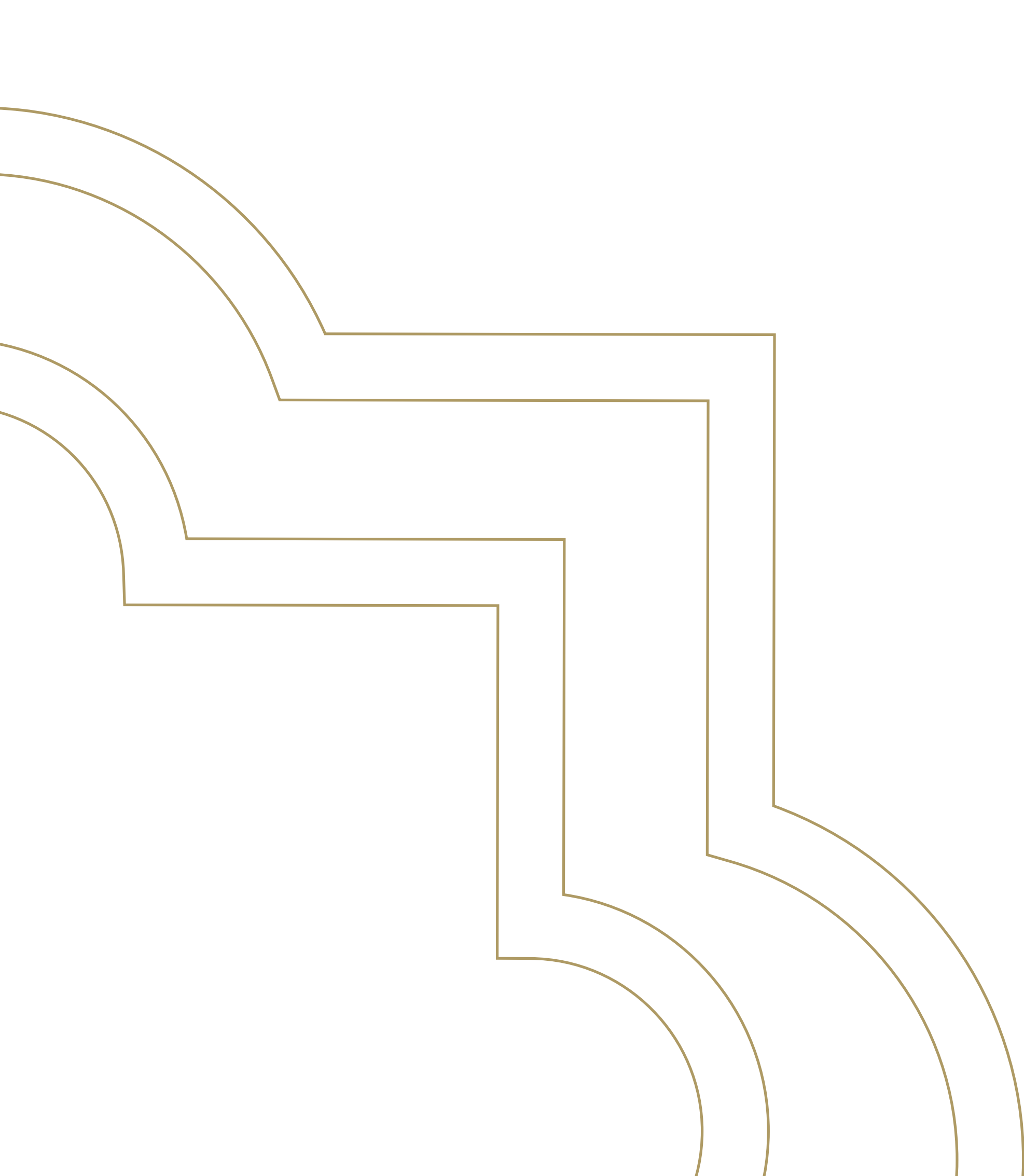


CURATED LIFESTYLE

Embodying Jumeirah's service philosophy, the residences will achieve unsurpassed standards of marina living. With a unique combination of prime location, effortless luxury and contemporary lifestyle, the development has been designed for discerning residents seeking everything they need in one place.

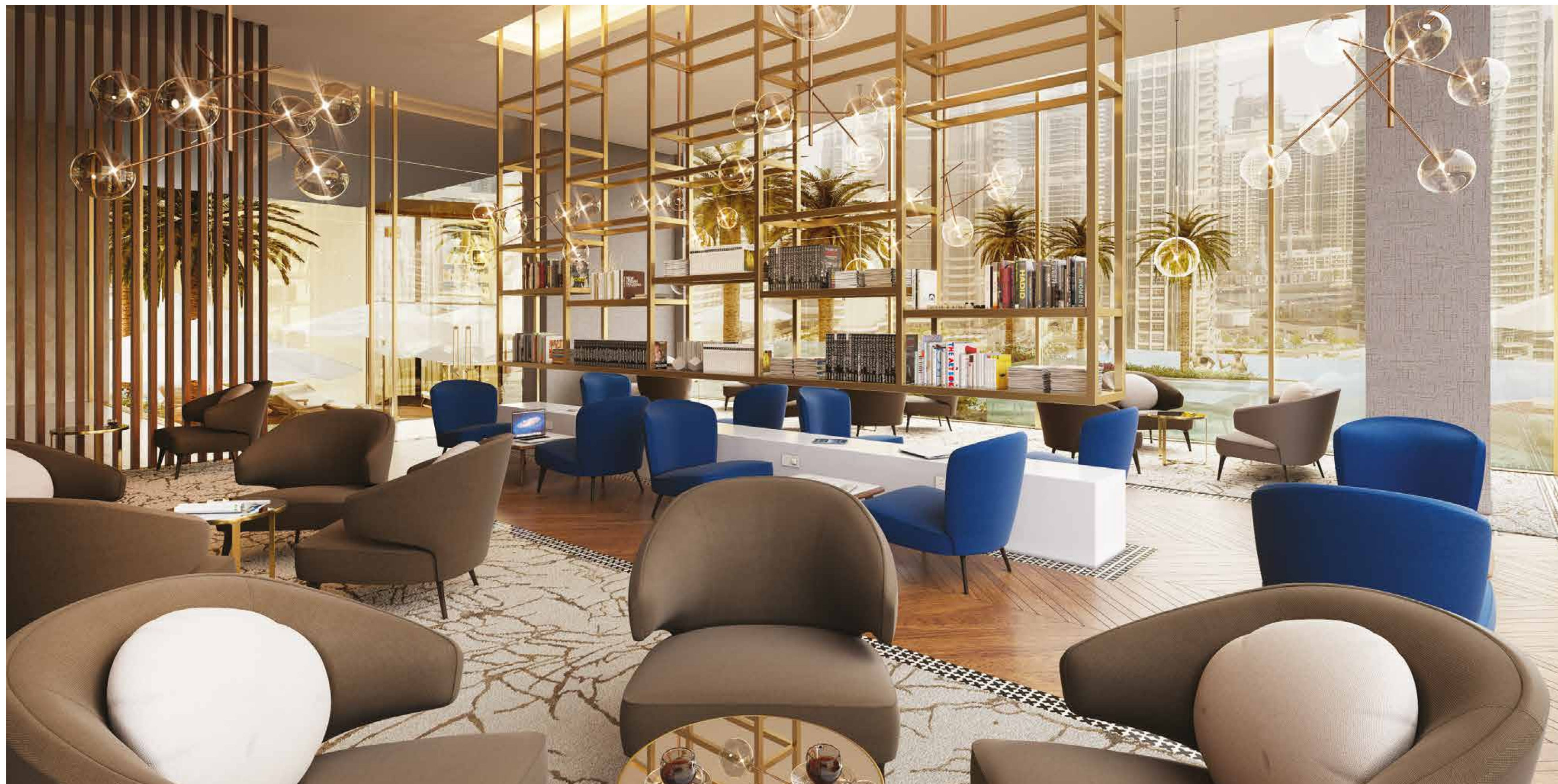
Exclusive sense of arrival and a lifestyle concierge service enhance the day-to-day experience, while every other detail has been taken care of to ensure residents are provided with the best of facilities.





AMENITIES & SERVICES

Jumeirah Living Marina Gate combines the privacy and comfort of home with the services and amenities of a luxury Jumeirah hotel.



SERENE RESIDENT'S LOUNGE

Conveniently located Resident's Lounge is an ideal place to relax and unwind in stylish executive surroundings. Views of the stunning Marina skyline, elegantly appointed interiors and impeccable service makes this the perfect setting for entertaining guests.



STATE OF THE ART FITNESS CENTRE

A good workout comes with a great view.

The state of the art, dual level gymnasium overlooks the bustling Dubai Marina and features the latest fitness and audio-visual equipment.





SPECTACULAR INFINITY EDGE POOL

Stunning temperature-controlled infinity pool manned by fully trained attendants for comfort and safety.

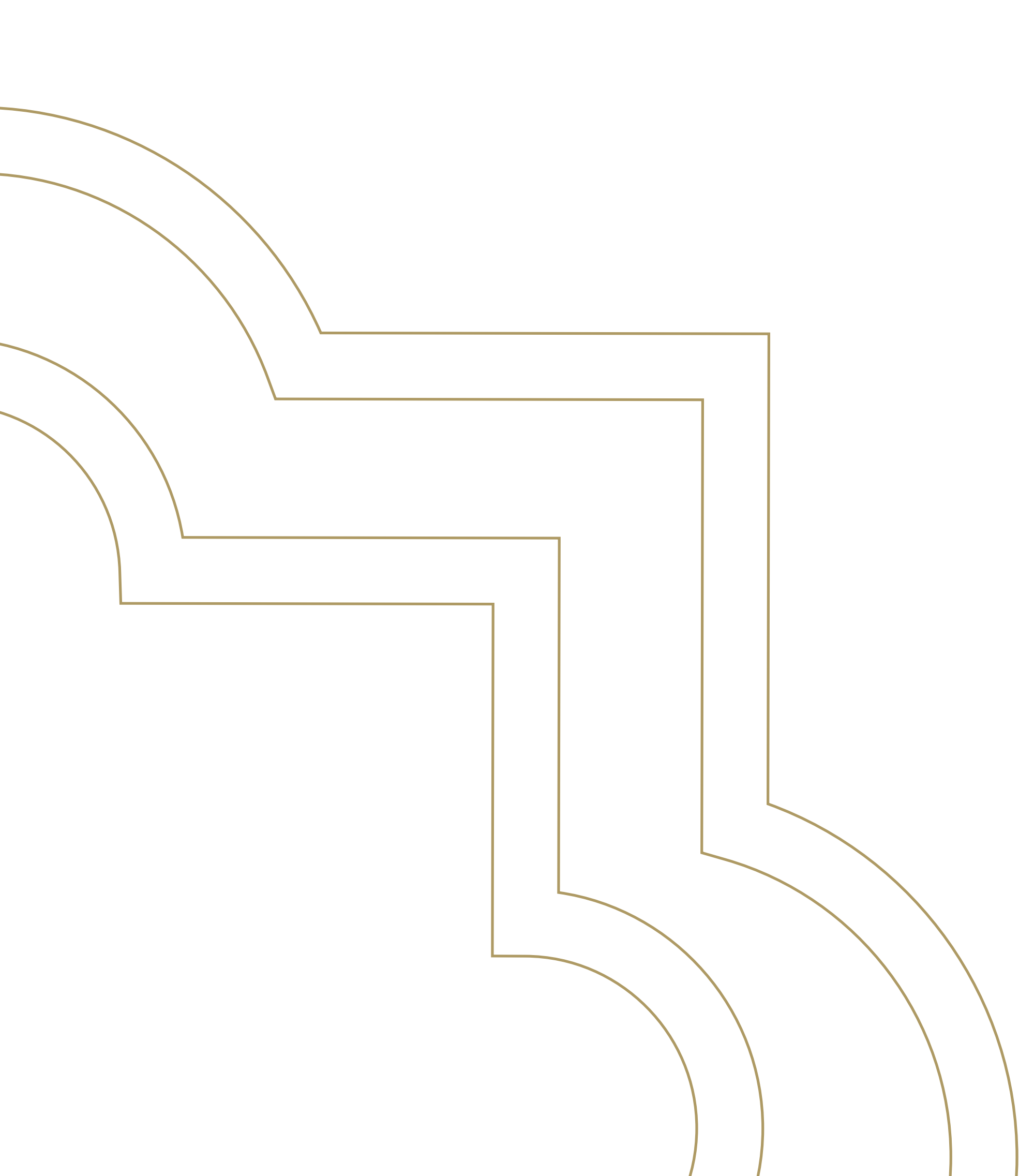


OPEN AIR PADDLE TENNIS COURT

Additional range of on-site leisure and lifestyle facilities will include:

- ◆ Lively children's pool and creative play area
- ◆ Relaxing sauna and invigorating plunge pool
- ◆ A dedicated guest relations team including concierge, security and housekeeping services





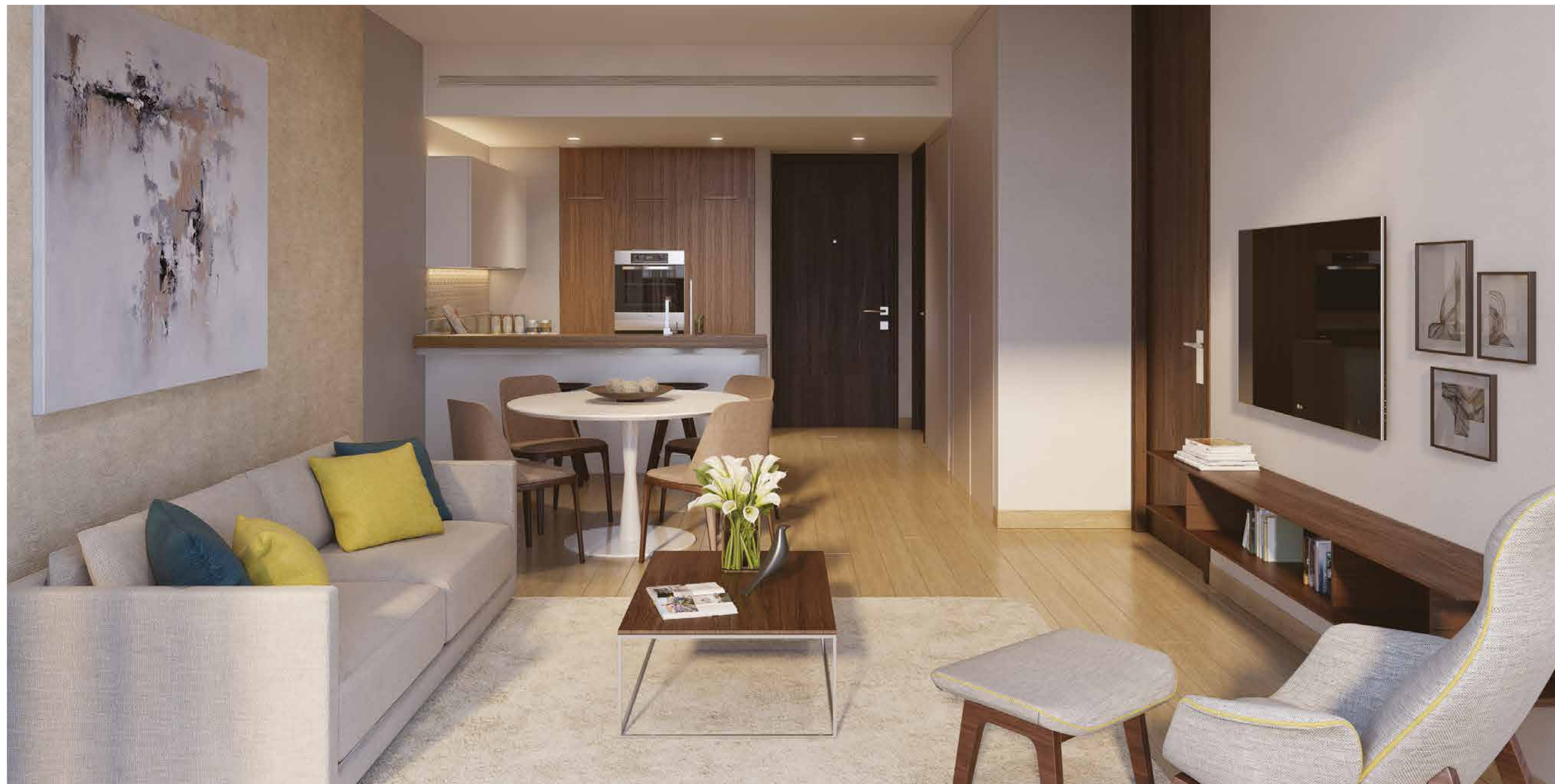
UNDERSTATED LUXURY THE PRIVATE RESIDENCES

The luxurious living destination has been designed to create a striking contemporary addition to the famed Marina skyline. Indoor spaces will be maximised with fully furnished, understated luxurious décor and huge floor-to-ceiling windows will highlight the stunning views. Carefully planned communal areas link a seamless sequence of inviting spaces, incorporating public and private areas where residents can choose to relax, retreat or socialise.



EXECUTIVE STUDIO

ONE BEDROOM APARTMENT

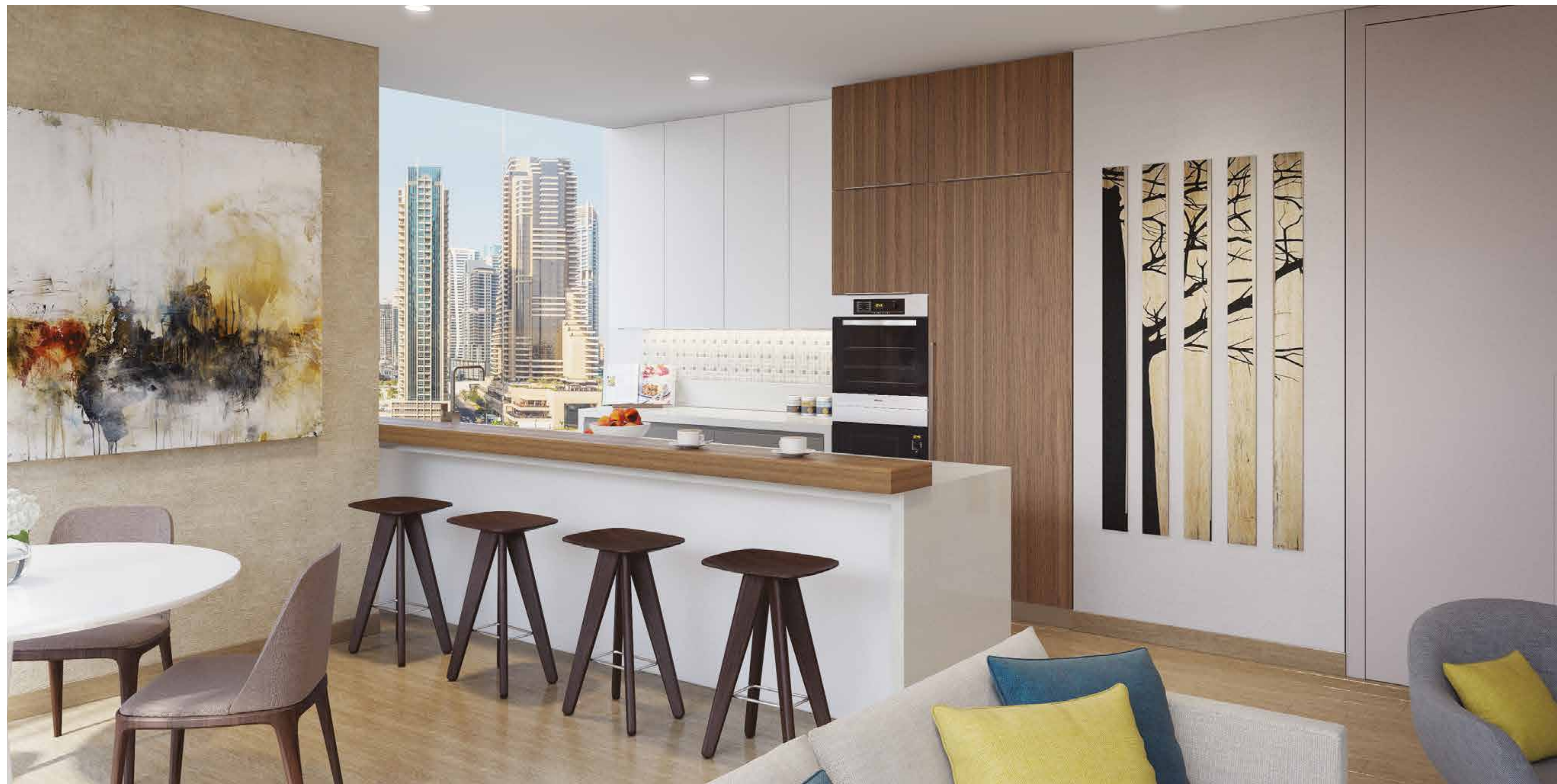




ONE BEDROOM VIEWS

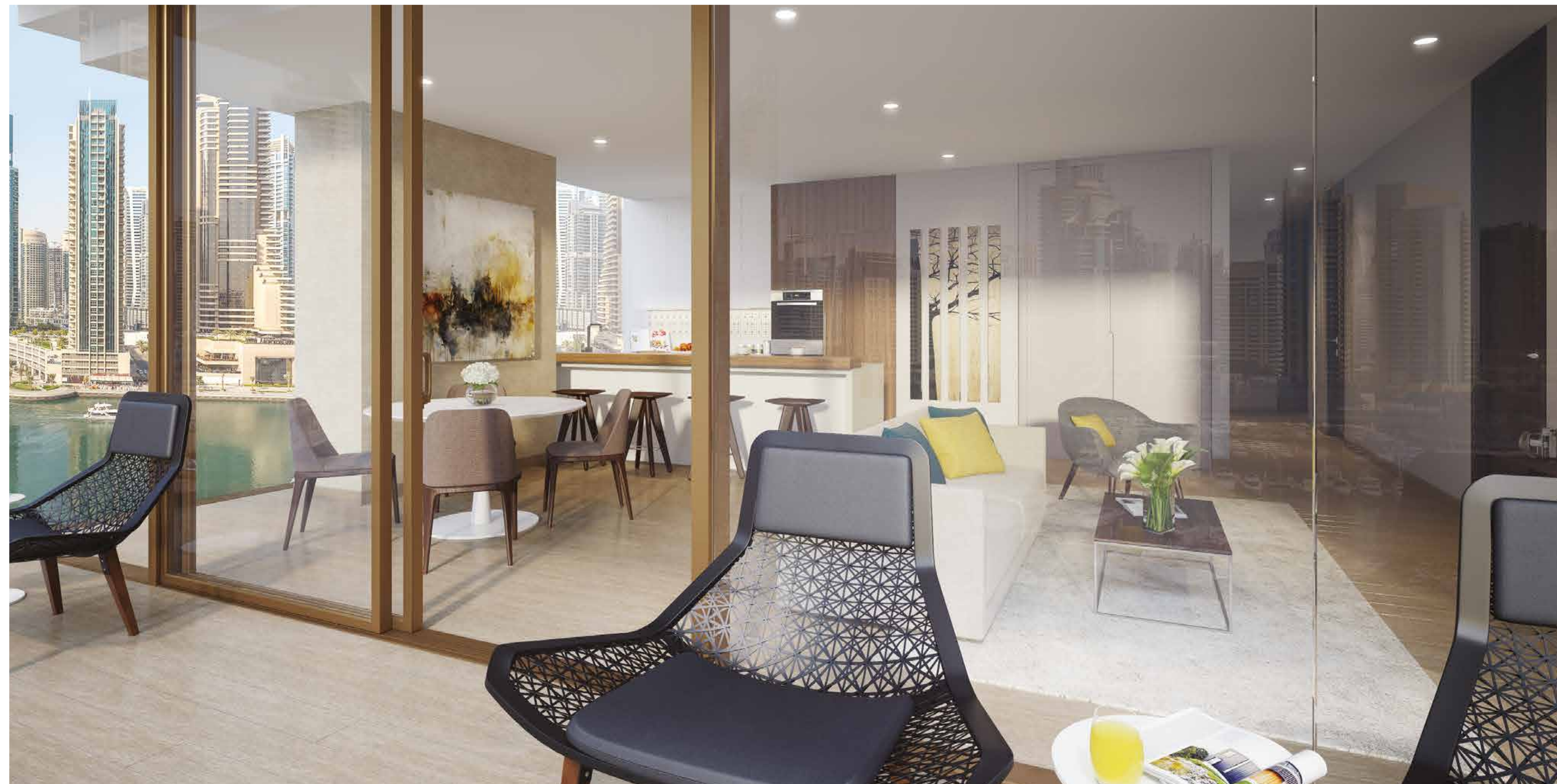
TWO BEDROOM APARTMENT





TWO BEDROOM KITCHEN

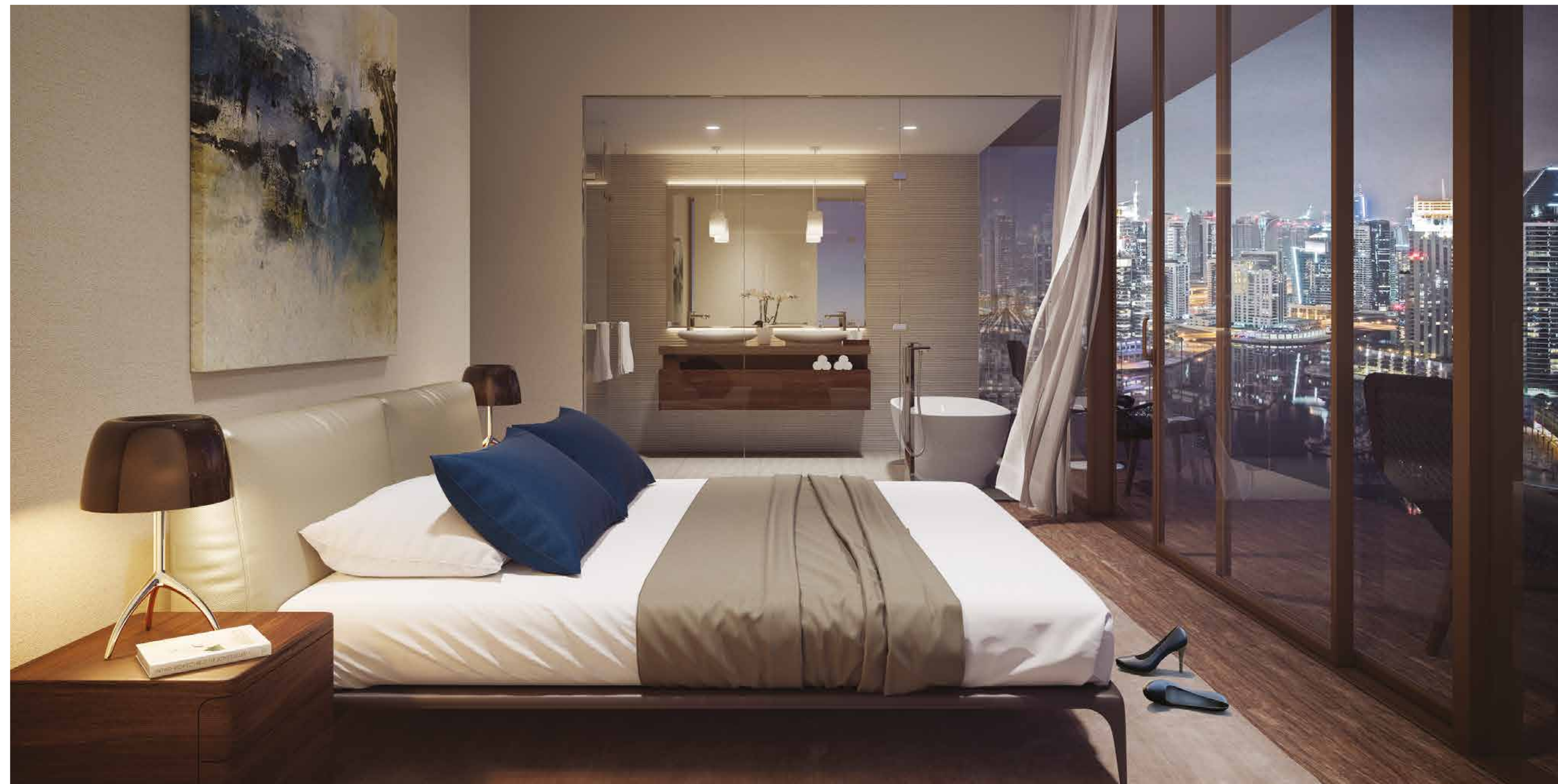
TWO BEDROOM BALCONY





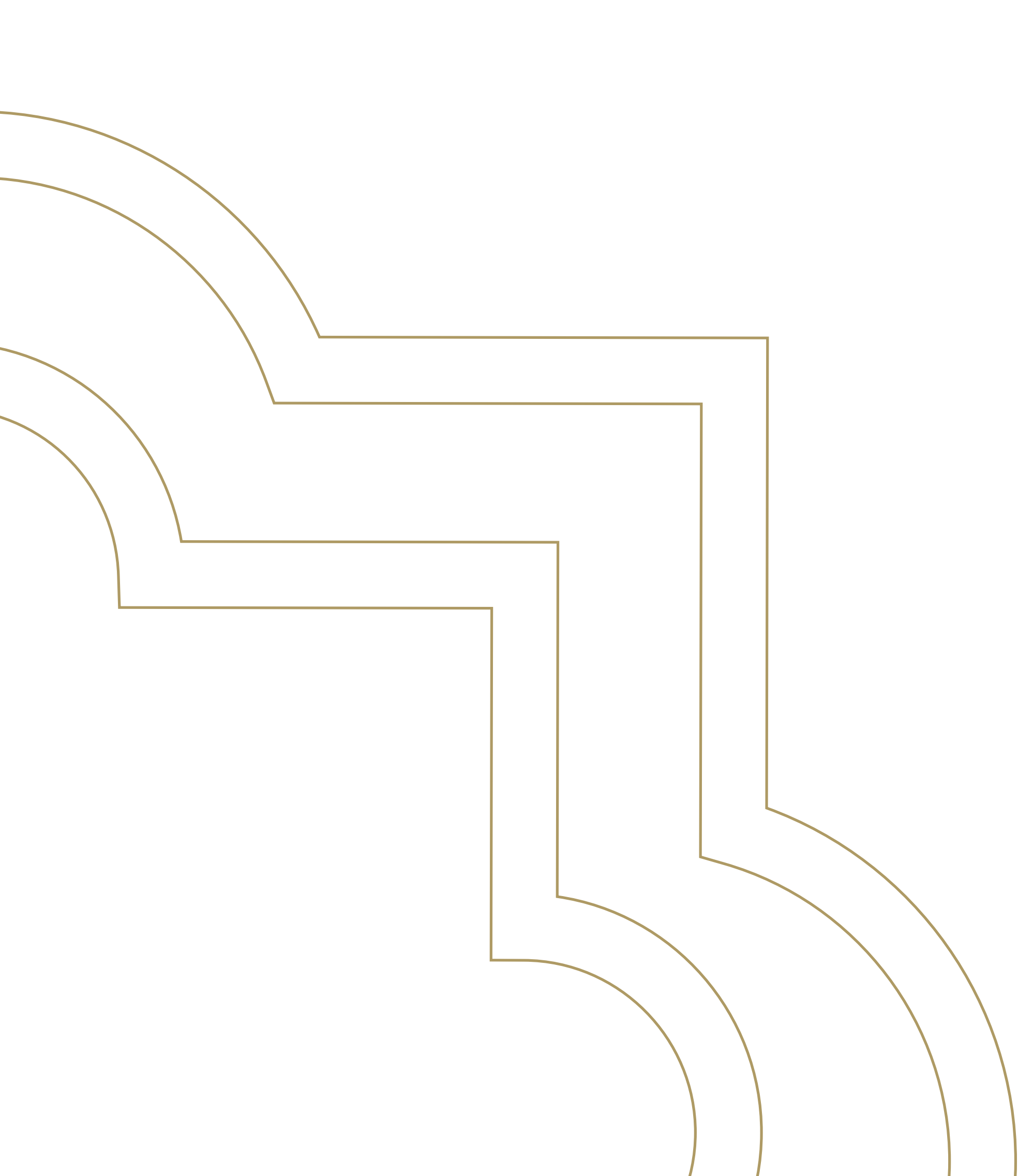
THREE BEDROOM APARTMENT

THE MASTER BEDROOM





THREE BEDROOM BATHROOM

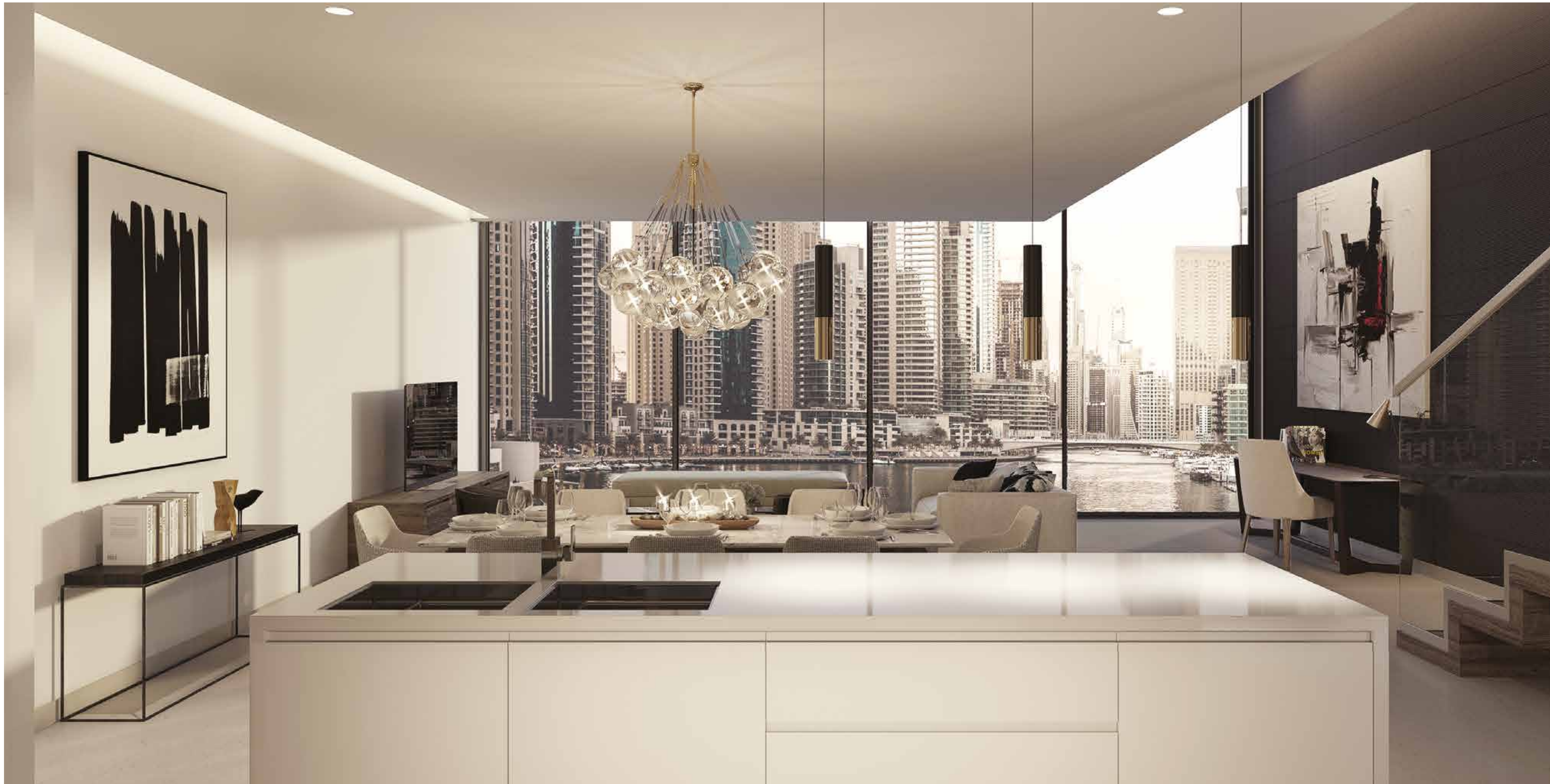


SUBTLE SOPHISTICATION THE VILLAS

Embellished with luxurious details, the finish and fittings in these exceptional duplex homes are in a class of their own.

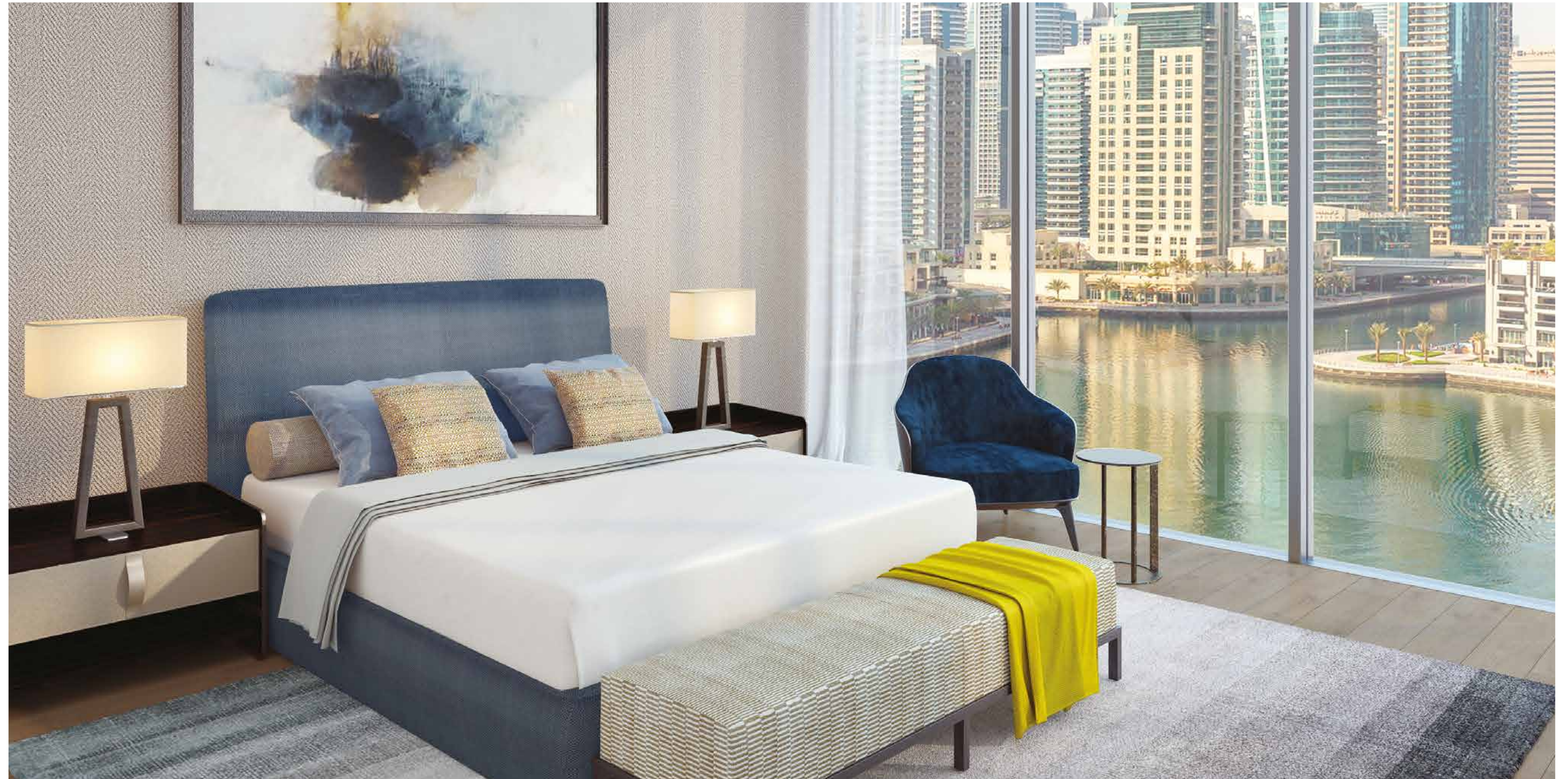
THE VILLA LIVING ROOM





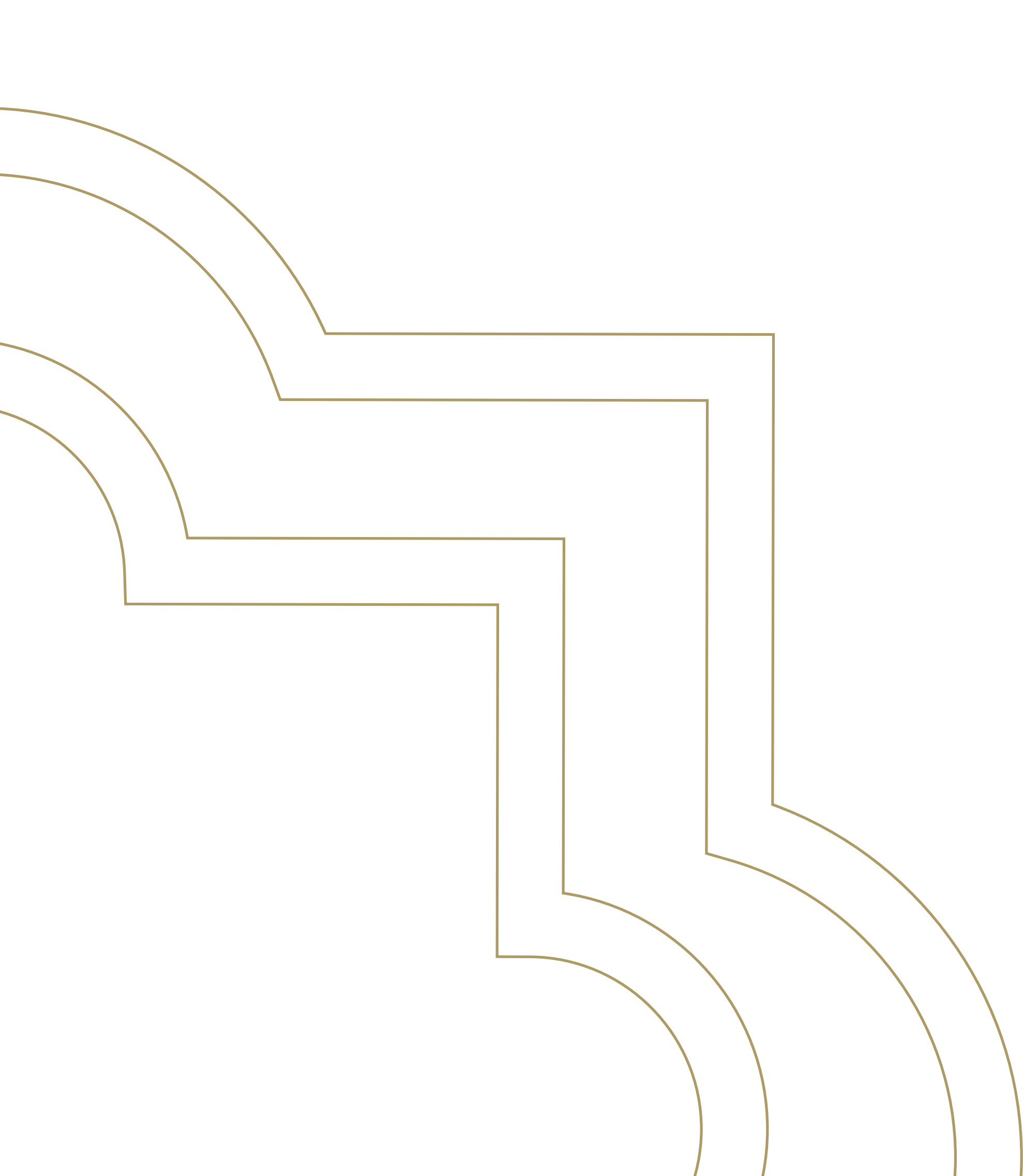
THE VILLA KITCHEN

THE VILLA
MASTER BEDROOM





THE VILLA
MASTER BATHROOM



LUXURY REDEFINED THE PENTHOUSE

The crown jewel of the development, the half-floor penthouse, is located on the 56th floor and is the epitome of luxury and comfort.

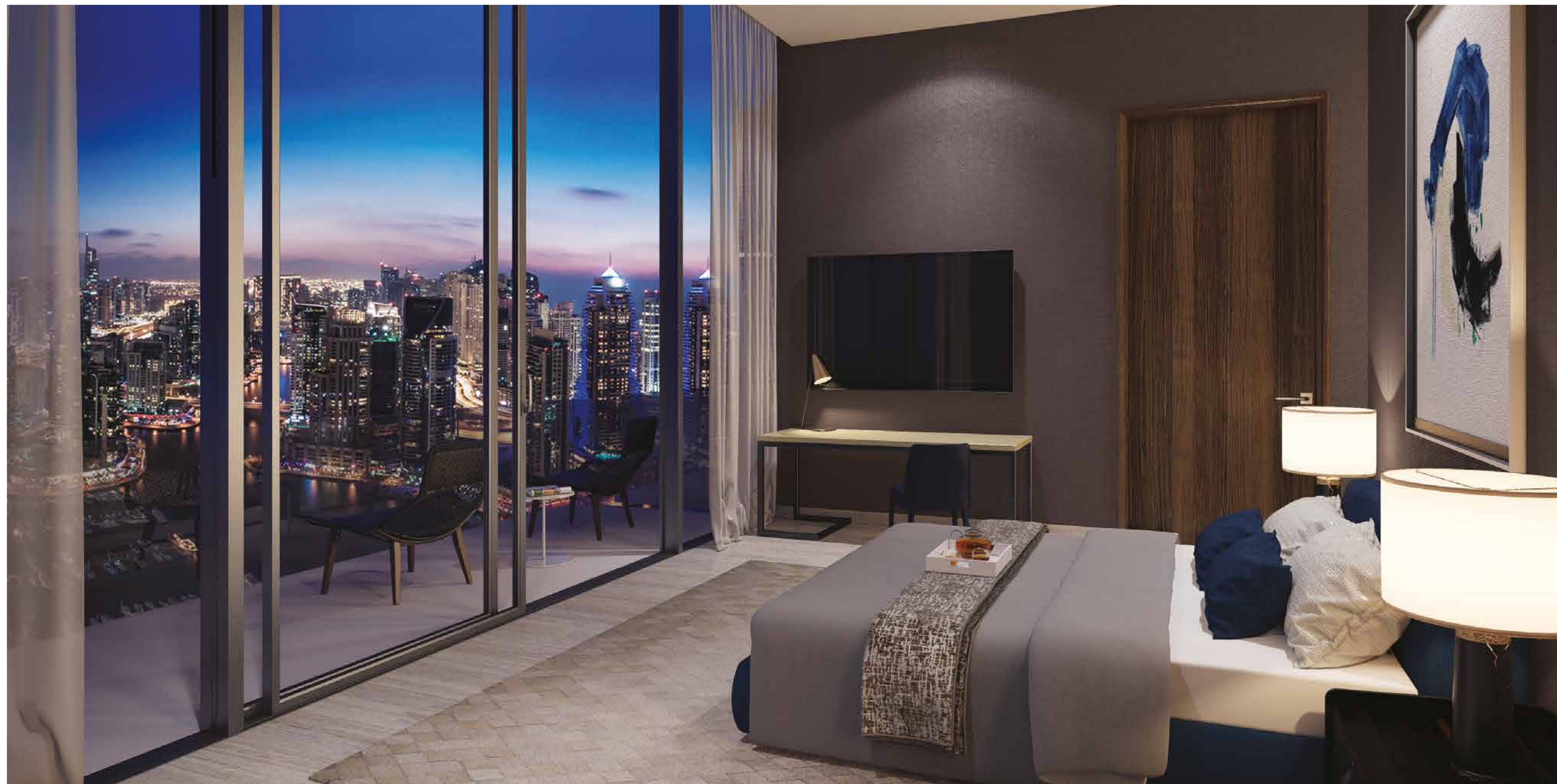
THE PENTHOUSE
LIVING ROOM





THE PENTHOUSE
DINING ROOM

THE PENTHOUSE
MASTER BEDROOM





THE PENTHOUSE
MASTER BATHROOM

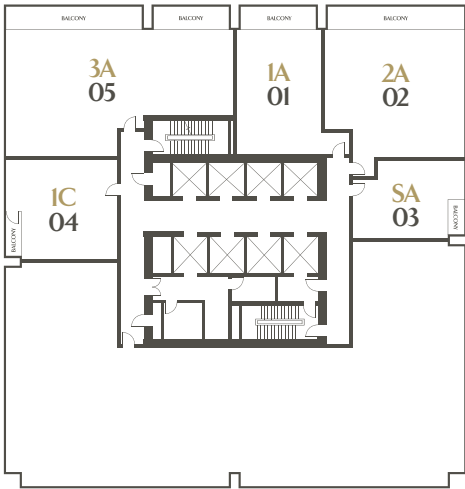
APARTMENT KEY PLANS



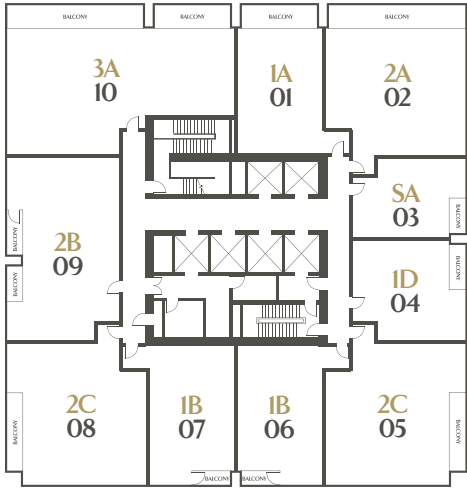
Marina View



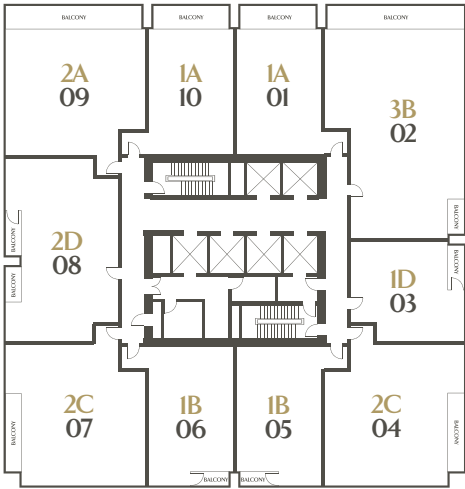
Sea View



FLOOR TYPE 03, 04
LEVEL 19, 20



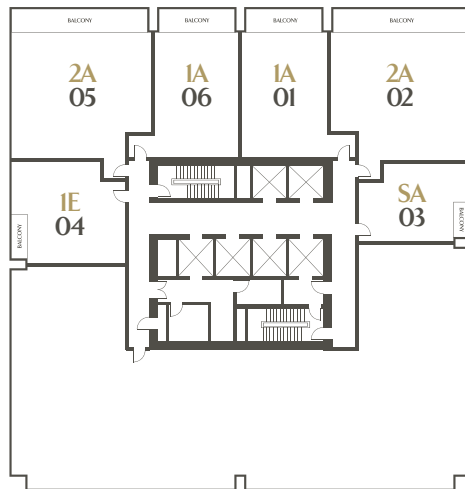
FLOOR TYPE 05
LEVEL 21



FLOOR TYPE 06
LEVEL 22 - 29



FLOOR TYPE 07
LEVEL 30 - 40



FLOOR TYPE 08
LEVEL 41, 42



FLOOR TYPE 09
LEVEL 43 - 55

Drawings are provided by our consultants. All dimensions, features and amenities are approximate at time of printing. Actual area may vary from stated area. Drawings not to scale E&OE. The developer reserves the right to make revisions to the floor plans and any features, materials and dimensions mentioned without further notice.

Drawings are provided by our consultants. All dimensions, features and amenities are approximate at time of printing. Actual area may vary from stated area. Drawings not to scale E&OE. The developer reserves the right to make revisions to the floor plans and any features, materials and dimensions mentioned without further notice.

SELECT GROUP

Select Group has been helping people create a secure future since 2002, through award-winning real estate and investment opportunities.

As one of the largest privately held real estate development and investment companies in the GCC, Select Group has delivered over 3,000 homes and continues to pursue fresh and exciting opportunities that will benefit communities for generations to come.





JUMEIRAH GROUP

Jumeirah Group was founded in 1997 with the aim of becoming a hospitality industry leader through establishing a world-class portfolio of luxury hotels and resorts. A natural extension to the Jumeirah Hotels & Resorts brand, JUMEIRAH LIVING™ encapsulates the STAY DIFFERENT™ promise by offering an outstanding hospitality experience, which combines the privacy and comfort of home with the refined services of a luxury hotel. Jumeirah Group currently operates 19 properties worldwide, including the Grosvenor House Suites by Jumeirah Living in London and Jumeirah Living World Trade Centre Residence in Dubai.



A development by



select-group.ae

The Jumeirah logos, trade marks and trade names ("Jumeirah Marks") published in this publication are owned by or licensed to Jumeirah International LLC or its Group Companies (collectively referred to as "Jumeirah"). The use of the Jumeirah Marks by Capitol 3 Limited ("Company") has been authorised by Jumeirah under license, solely in relation to the intention of Jumeirah to manage and operate the "Jumeirah Living Marina Gate" development located at Dubai Marina, Dubai ("Development").

The Development is not owned, developed or sold by Jumeirah. The Company, which is not an affiliate of Jumeirah, is responsible for the marketing and sales of the Development. Accordingly, Jumeirah will not be responsible for: (a) any advertising claims or representations in this publication or otherwise made by the Company; (b) any content in this publication; (c) any marketing and/or data collection practices carried out by the Company; (d) any dealings or communications that you have with the Company; and (e) any infringement of third party rights or local laws in connection with this publication. Jumeirah strongly recommends that you confirm any information appearing in this publication and consult your professional advisors before proceeding with any related transaction. To the maximum extent permitted by law, Jumeirah will not be liable for any form of loss or damage arising out of or in connection with this publication, the Development, or any dealings or communications that you have with the Company.

© Select Global Development LLC 2016. All rights reserved. No part of this publication may be reproduced in any material form (including photocopying or storage in any medium by electronic means) without the written permission of Select Global Development LLC.

