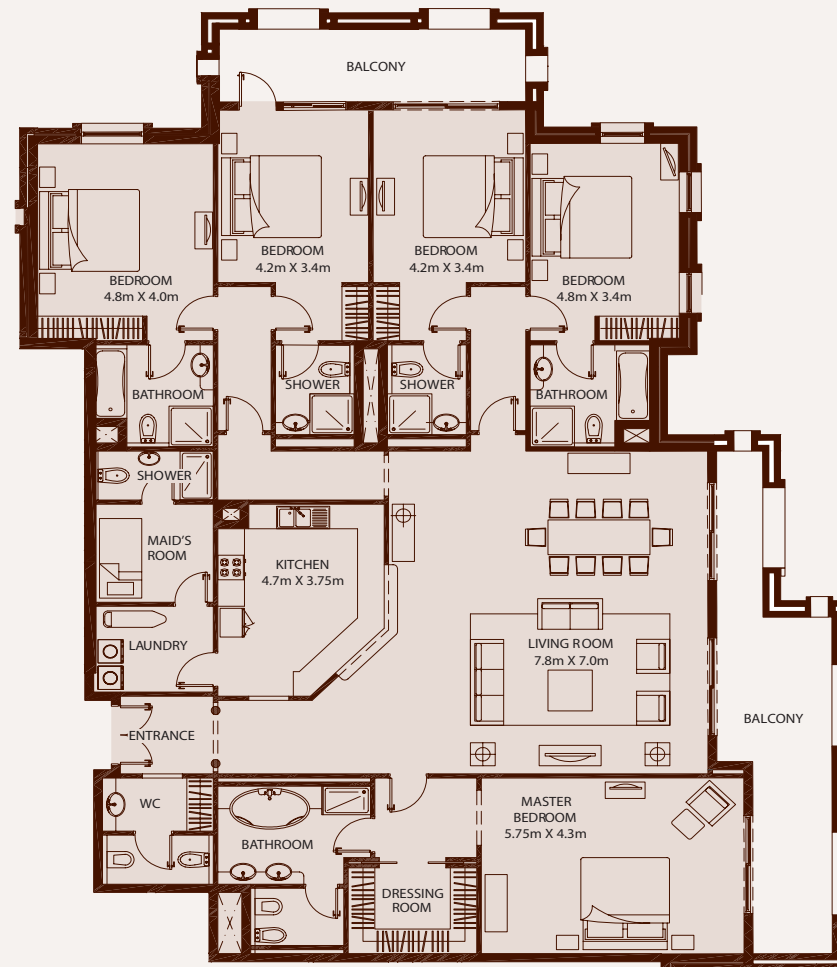
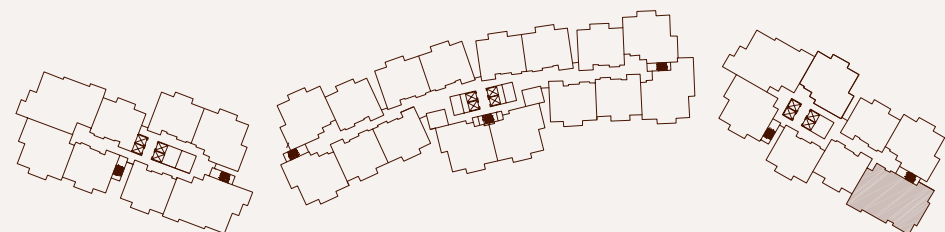


APARTMENTS

UNIT TYPE A - 5 BEDROOM



Apartments - Unit Type A, 5 Bedroom - Approximate Areas		
Unit	295.49m ²	3,181ft ²
Balcony	44.01m ²	474ft ²
Total	339.50m²	3,655ft²



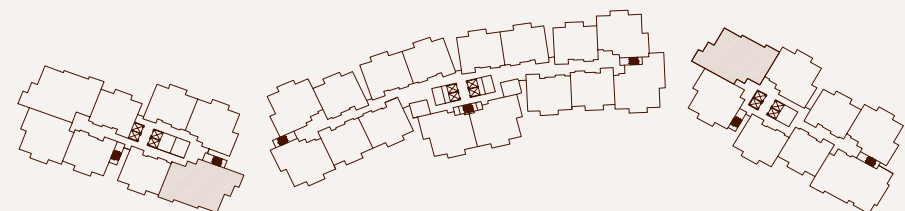
All measurements, drawings and materials are approximate. This information is subject to change without notice. The developer reserves the right to make revisions. This drawing is not to scale. Computer renderings displayed are an artist's representation of the project. Variations may occur.

APARTMENTS

UNIT TYPE B1 - 4 BEDROOM



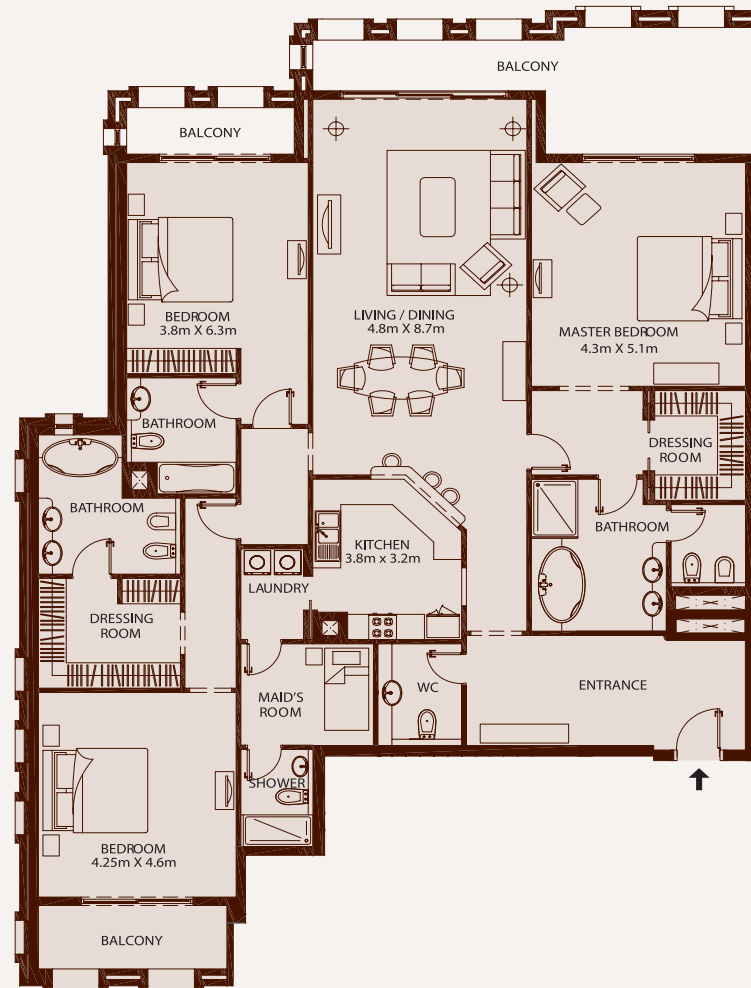
Apartments - Unit Type B1, 4 Bedroom - Approximate Areas		
Unit	296.94m ²	3,196ft ²
Balcony	40.08m ²	431ft ²
Total	337.02m²	3,627ft²



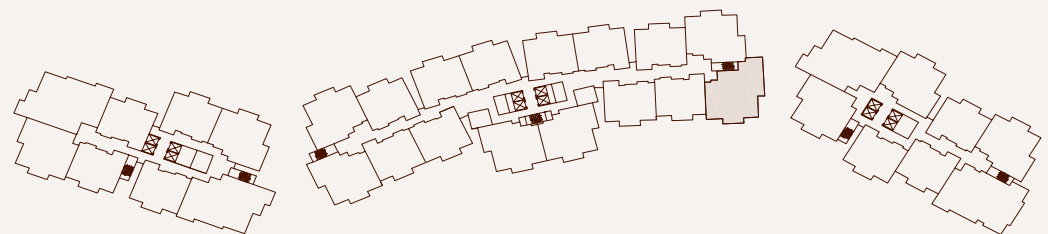
All measurements, drawings and materials are approximate. This information is subject to change without notice. The developer reserves the right to make revisions. This drawing is not to scale. Computer renderings displayed are an artist's representation of the project. Variations may occur.

APARTMENTS

UNIT TYPE C - 3 BEDROOM



Apartments - Unit Type C, 3 Bedroom - Approximate Areas		
Unit	238.47m ²	2,567ft ²
Balcony	40.80m ²	439ft ²
Total	279.27m²	3,006ft²



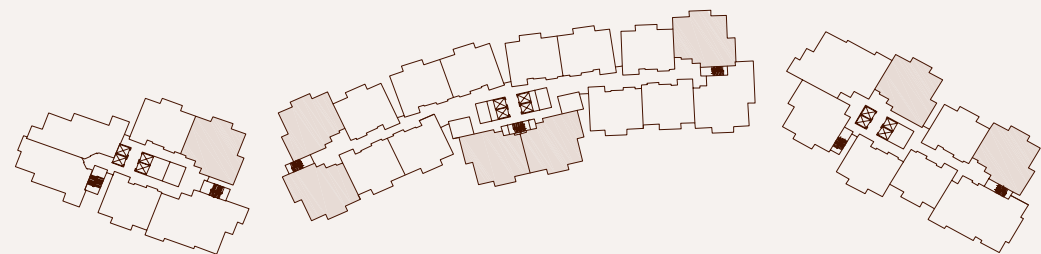
All measurements, drawings and materials are approximate. This information is subject to change without notice. The developer reserves the right to make revisions. This drawing is not to scale. Computer renderings displayed are an artist's representation of the project. Variations may occur.

APARTMENTS

UNIT TYPE D1 - 3 BEDROOM



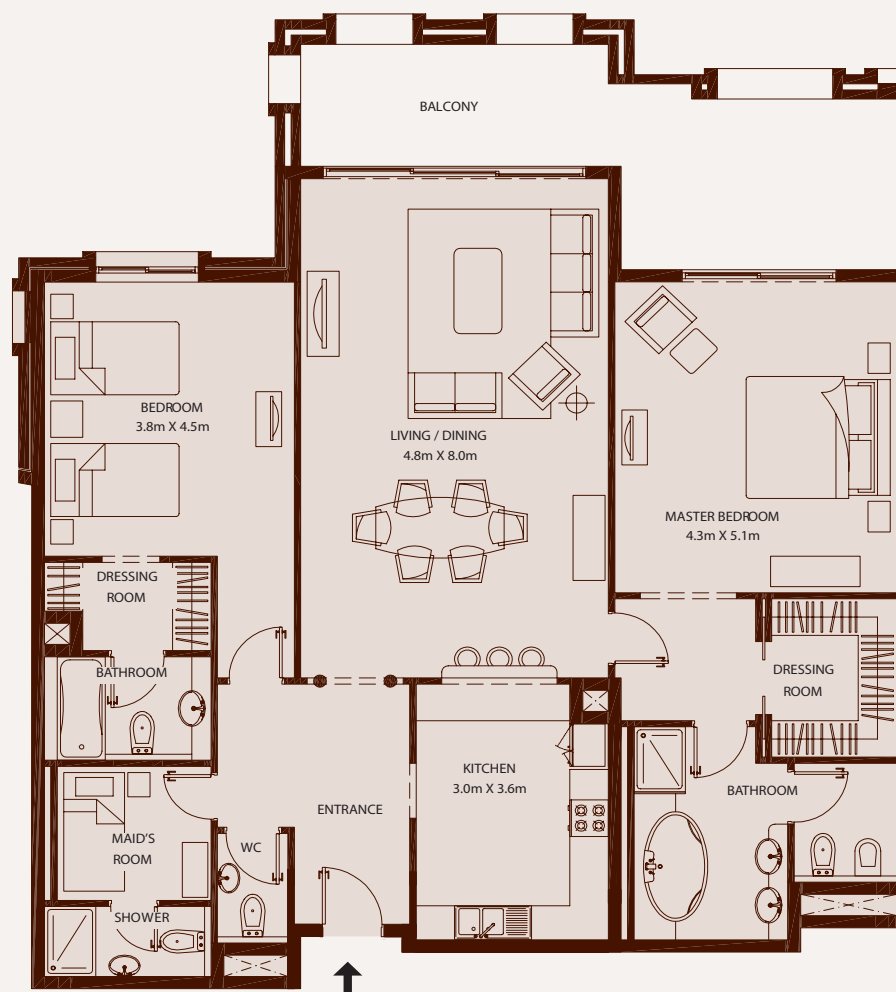
Apartments - Unit Type D1, 3 Bedroom - Approximate Areas		
Unit	199.85m ²	2,151ft ²
Balcony	22.68m ²	244ft ²
Total	222.53m²	2,395ft²



All measurements, drawings and materials are approximate. This information is subject to change without notice. The developer reserves the right to make revisions. This drawing is not to scale. Computer renderings displayed are an artist's representation of the project. Variations may occur.

APARTMENTS

UNIT TYPE E - 2 BEDROOM



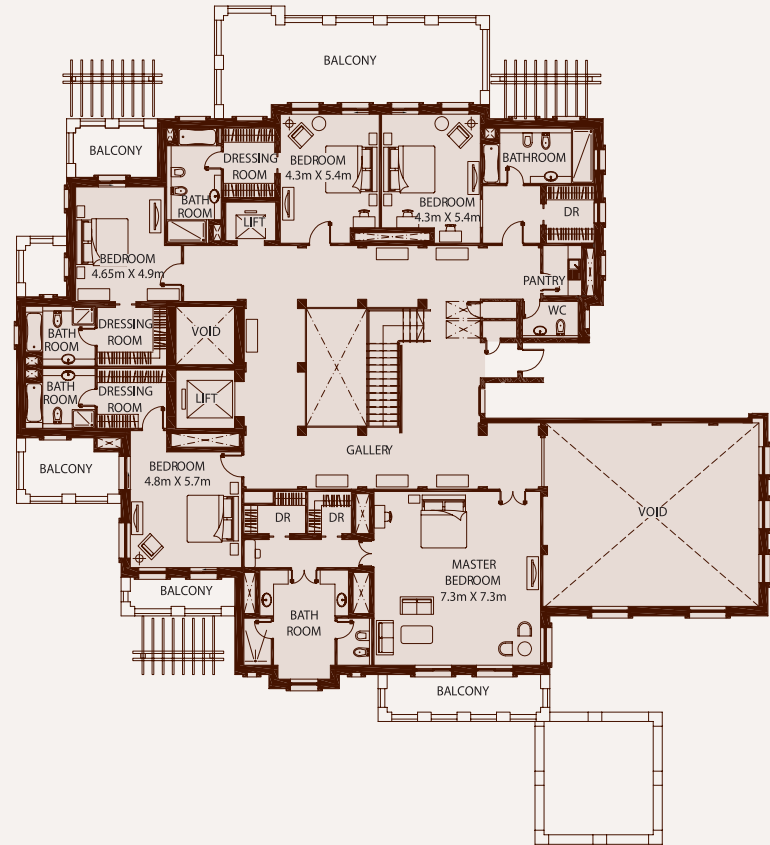
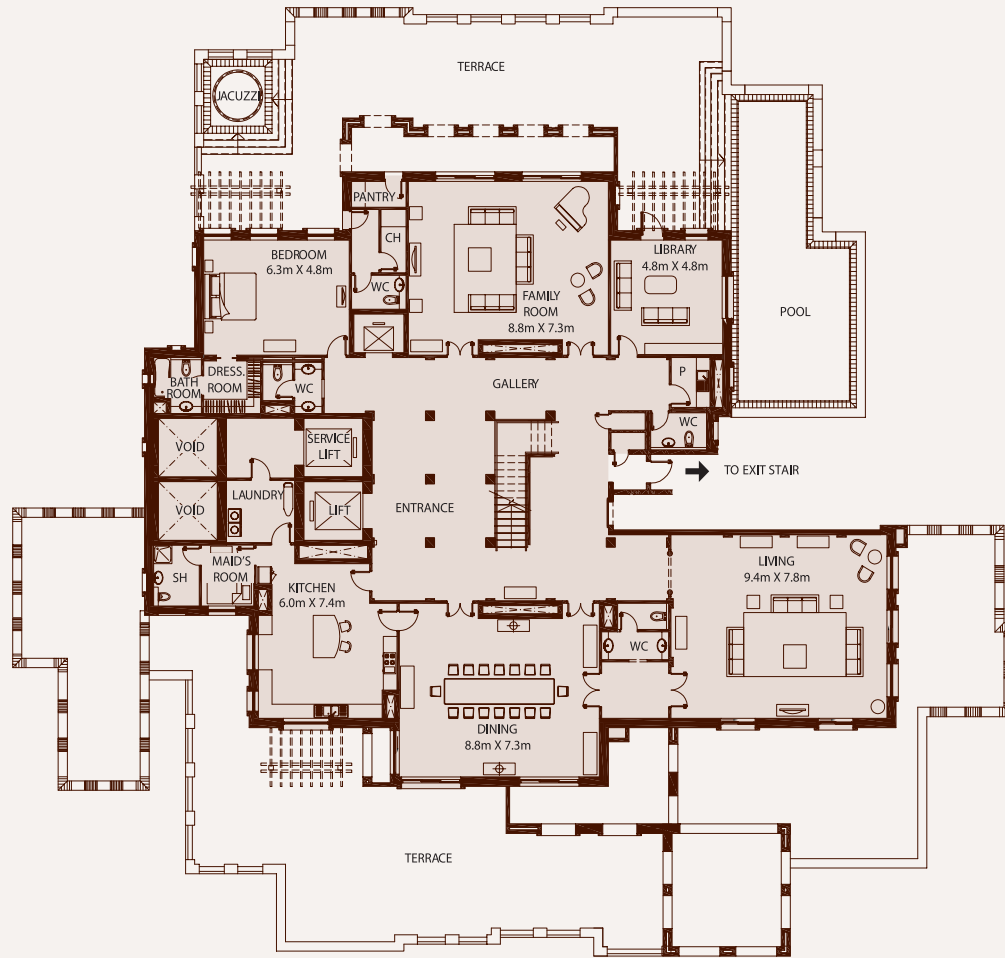
Apartments - Unit Type E, 2 Bedroom - Approximate Areas		
Unit	162.30m ²	1,747ft ²
Balcony	26.90m ²	290ft ²
Total	189.20m²	2,037ft²



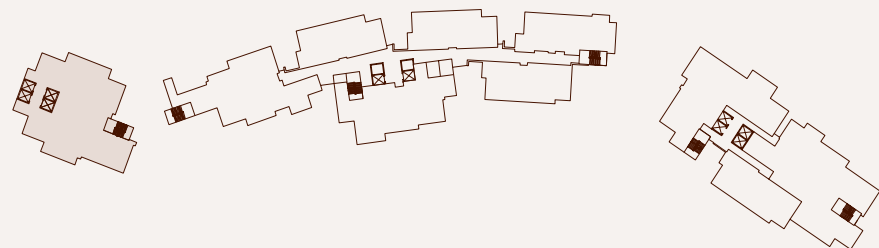
All measurements, drawings and materials are approximate. This information is subject to change without notice. The developer reserves the right to make revisions. This drawing is not to scale. Computer renderings displayed are an artist's representation of the project. Variations may occur.

PENTHOUSES

PH101

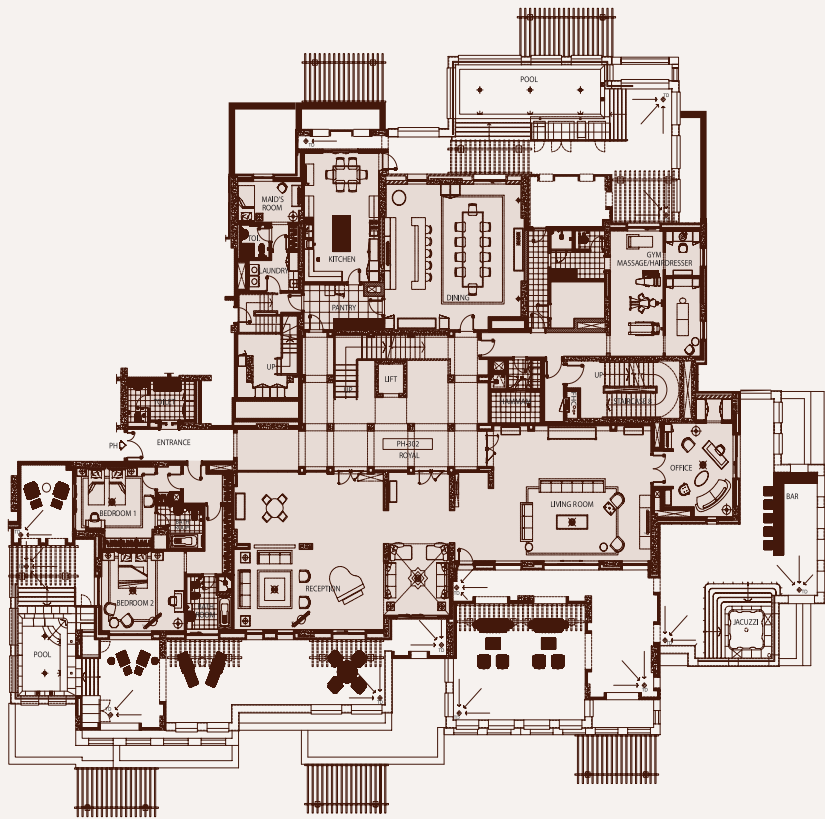


Penthouses - PH101 - Approximate Areas			
Lower Level	Unit	572.48m ²	6,162ft ²
Lower Level	Terrace	563.09m ²	6,061ft ²
Upper Level	Unit	458.72m ²	4,938ft ²
Upper Level	Balcony	99.92m ²	968ft ²
Upper Level	Void	83.00m ²	893ft ²
Total		1,777.21m²	19,022ft²

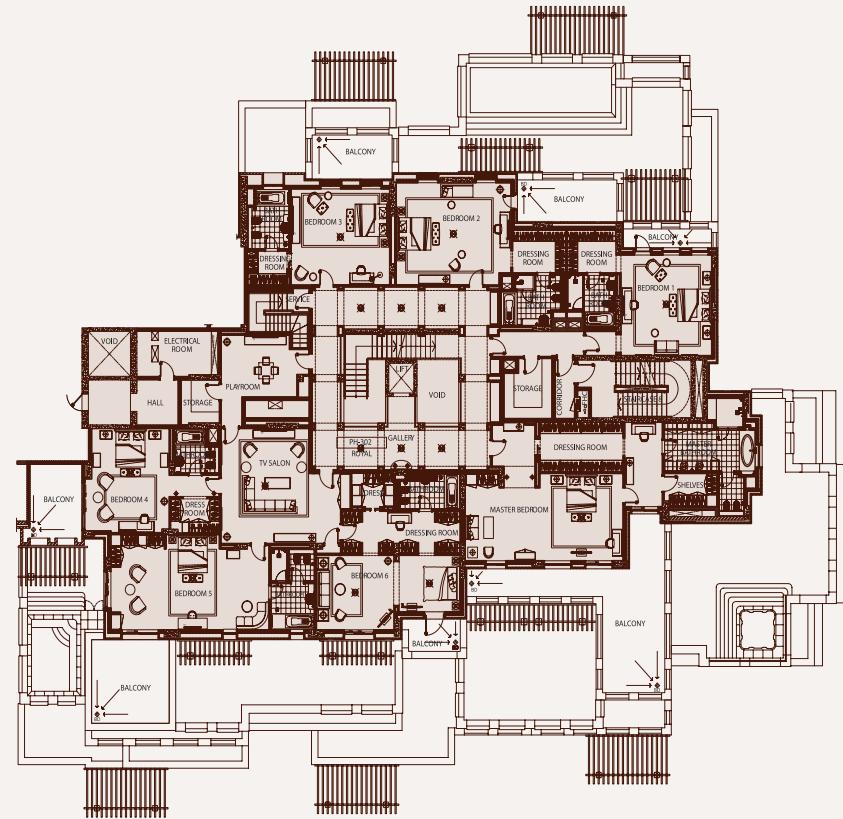


All measurements, drawings and materials are approximate. This information is subject to change without notice. The developer reserves the right to make revisions. This drawing is not to scale. Computer renderings displayed are an artist's representation of the project. Variations may occur.

PENTHOUSES PH302

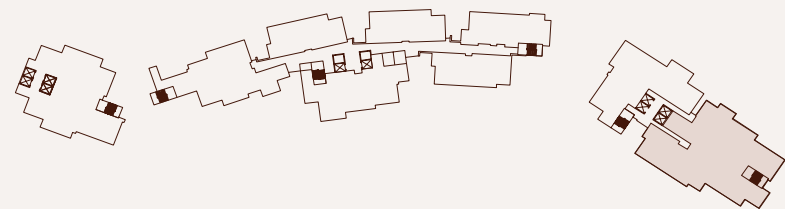


Lower Level

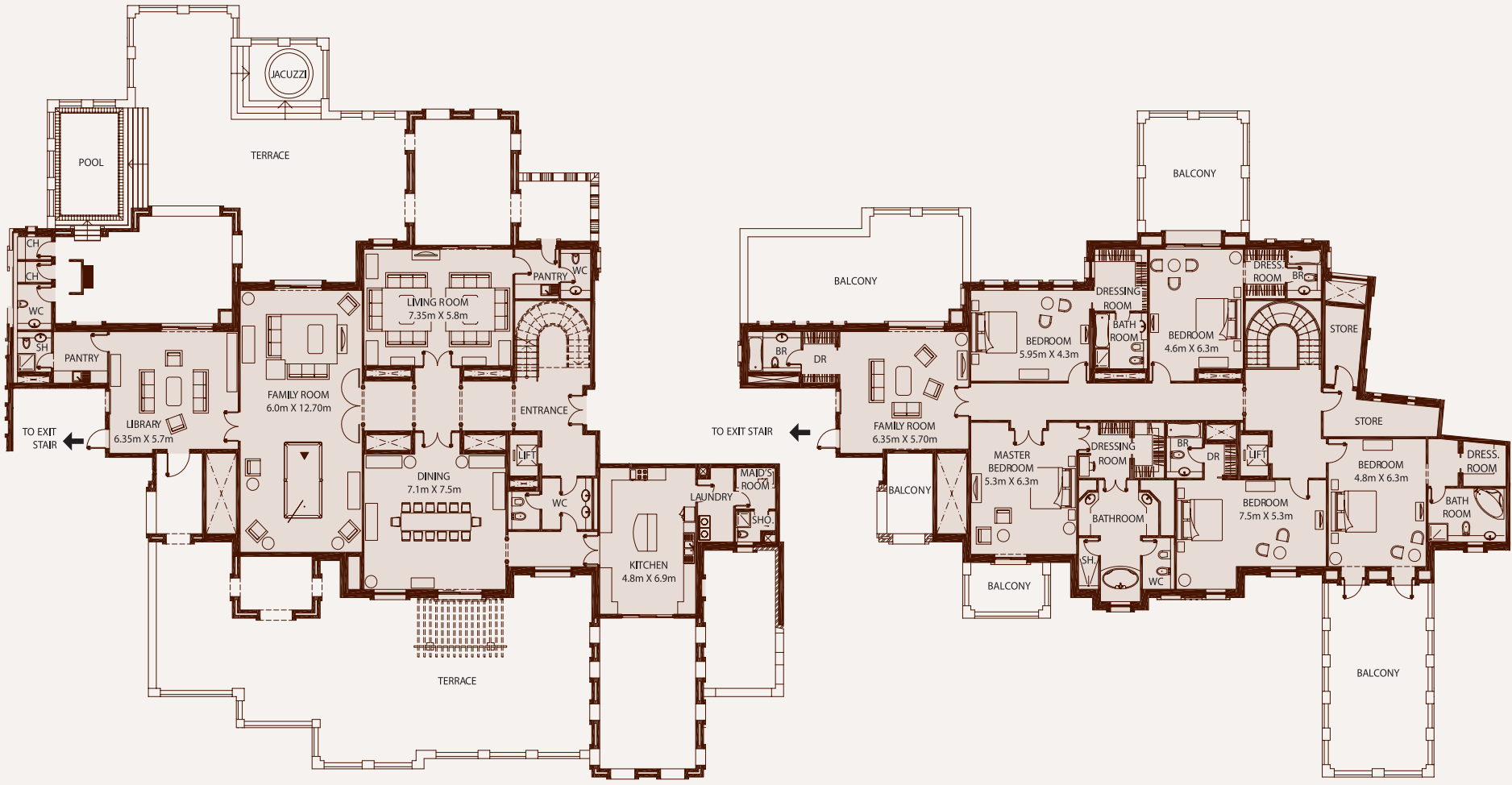


Upper Level

Penthouses - PH302 - Approximate Areas			
Lower Level	Unit	799.08m ²	8,601ft ²
Lower Level	Terrace	486.24m ²	5,233ft ²
Upper Level	Unit	782.00m ²	8,417ft ²
Upper Level	Terrace	153.52m ²	1,652ft ²
Total		2,220.84m²	23,905.12ft²



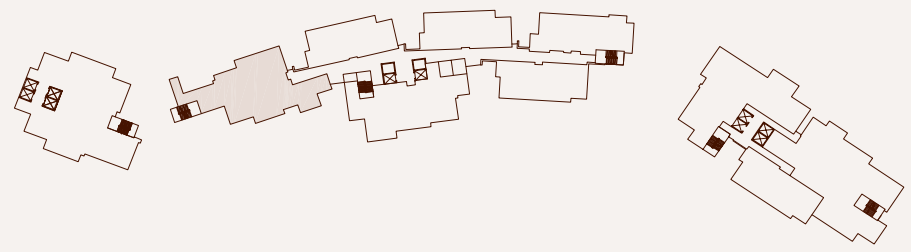
PENTHOUSES PH201



Lower Level

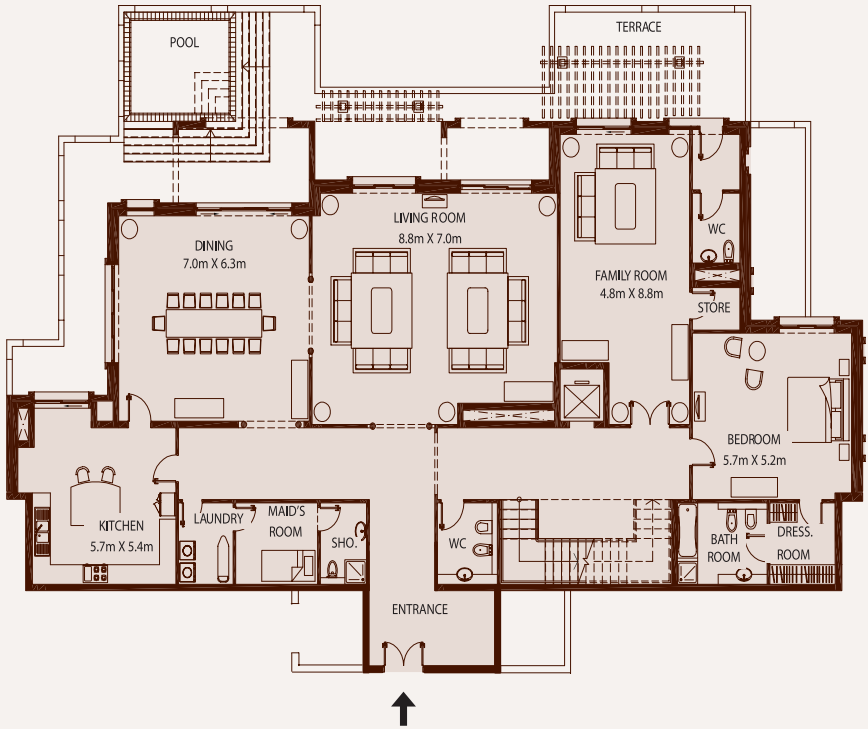
Upper Level

Penthouses - PH201 - Approximate Areas			
Lower Level	Unit	404.38m ²	4,353ft ²
Lower Level	Terrace	522.29m ²	5,622ft ²
Upper Level	Unit	424.84m ²	4,573ft ²
Upper Level	Balcony	166.34m ²	1,790ft ²
Total		1517.85m²	16,338ft²

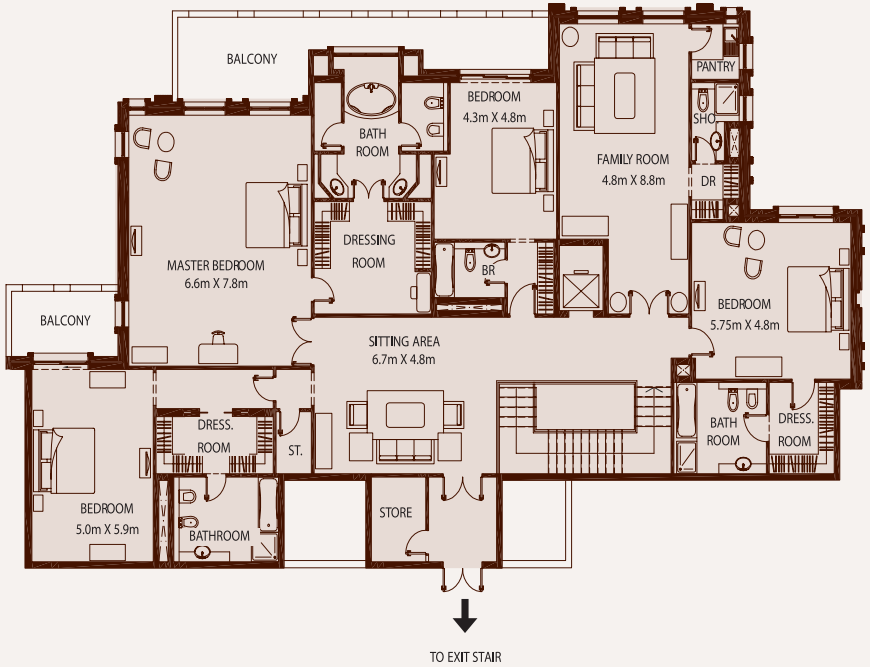


All measurements, drawings and materials are approximate. This information is subject to change without notice. The developer reserves the right to make revisions. This drawing is not to scale. Computer renderings displayed are an artist's representation of the project. Variations may occur.

PENTHOUSES PH206



Lower Level



Upper Level

Penthouses - PH206 - Approximate Areas

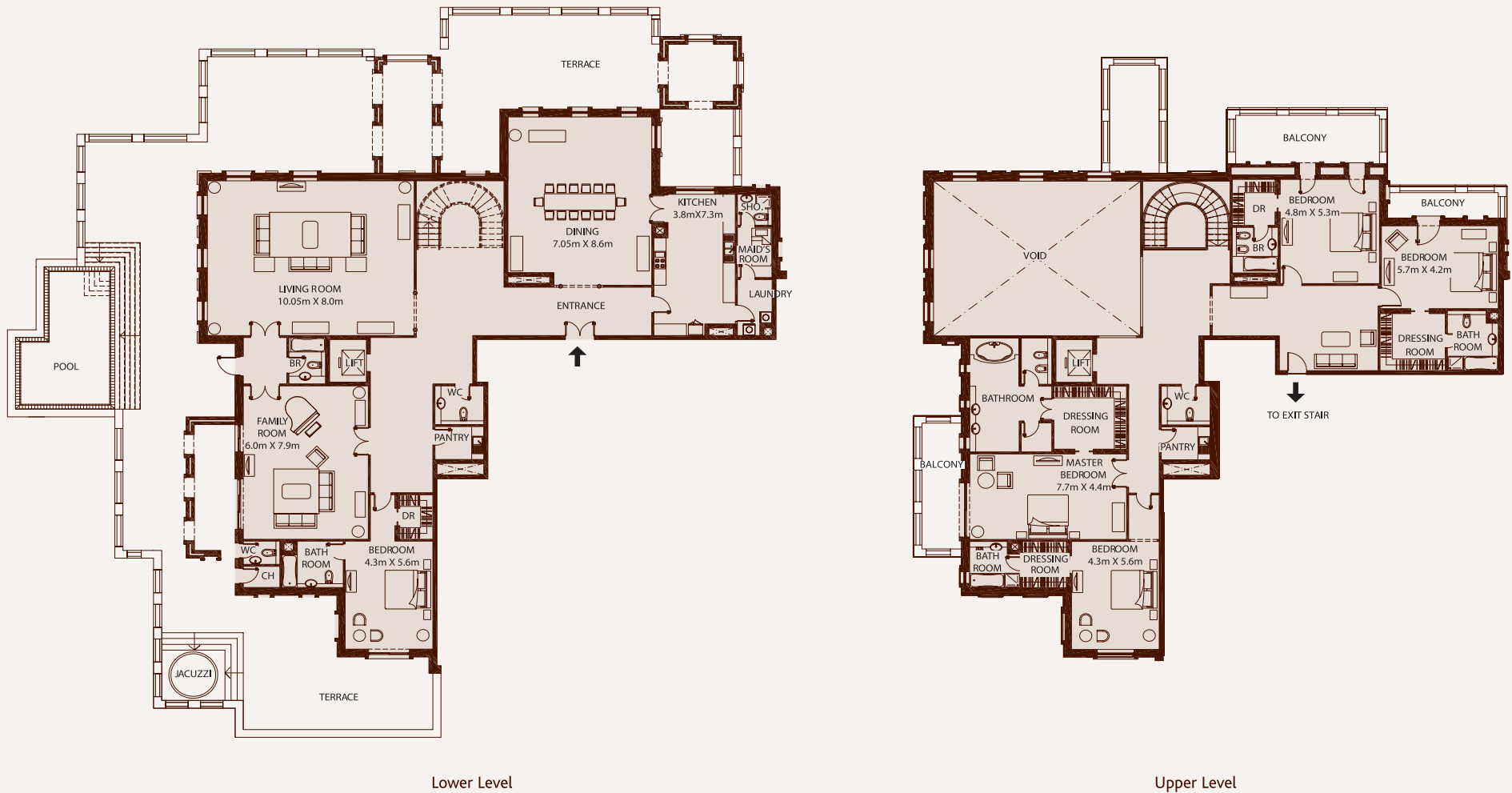
Lower Level	Unit	367.29m ²	3,953ft ²
Lower Level	Terrace	126.49m ²	1,361ft ²
Upper Level	Unit	381.53m ²	4,107ft ²
Upper Level	Balcony	36.33m ²	391ft ²
Total		911.64m²	9,812ft²



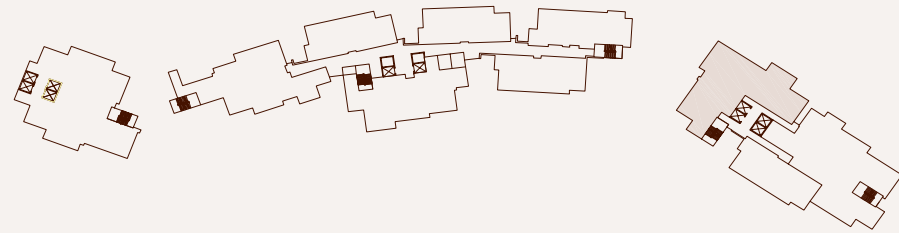
All measurements, drawings and materials are approximate. This information is subject to change without notice. The developer reserves the right to make revisions. This drawing is not to scale. Computer renderings displayed are an artist's representation of the project. Variations may occur.

PENTHOUSES

PH301

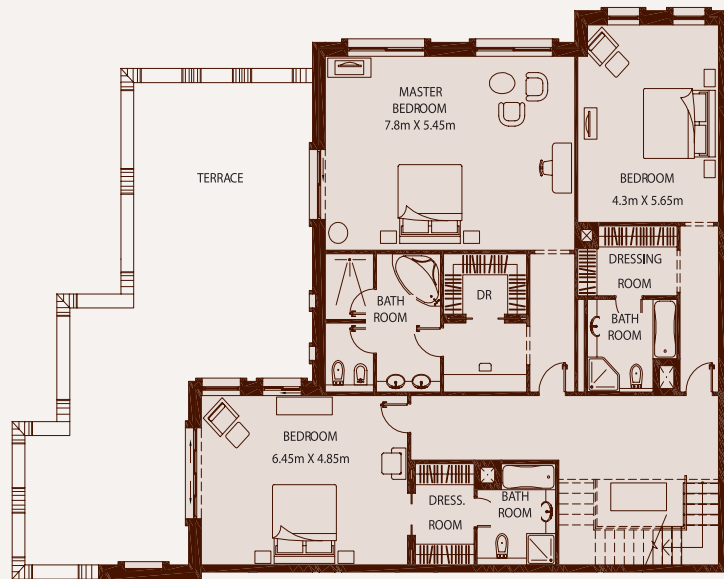


Penthouses - PH301 - Approximate Areas			
Lower Level	Unit	425.52m ²	4,580ft ²
Lower Level	Balcony	421.25m ²	4,534ft ²
Upper Level	Unit	332.06m ²	3,574ft ²
Upper Level	Void	81.19m ²	874ft ²
Upper Level	Balcony	50.32m ²	542ft ²
Total		1,310.34m²	14,104ft²

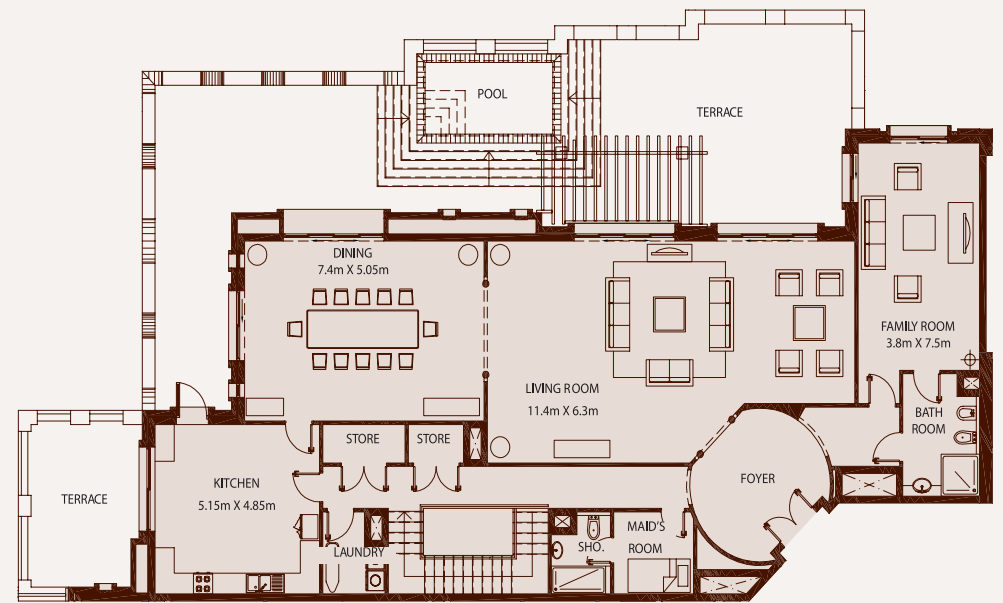


PENTHOUSES

PH1501, 1502

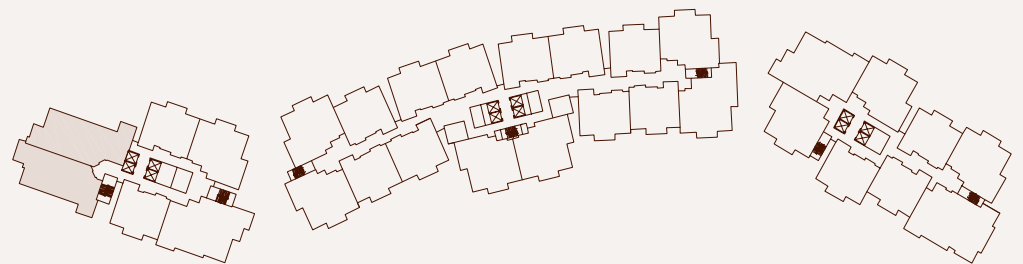


Lower Level



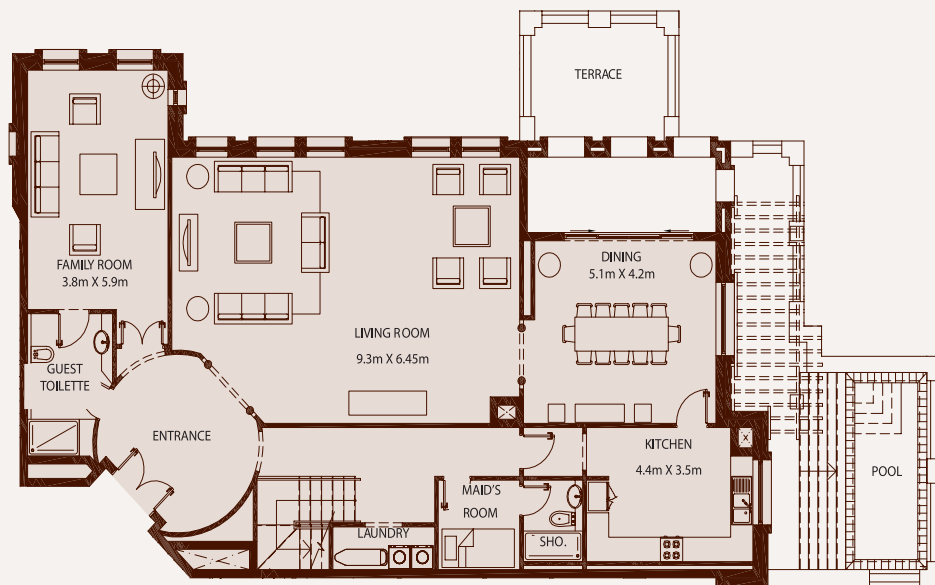
Upper Level

Penthouses - PH1501, 1502 - Approximate Areas			
Upper Level	Unit	264.05m ²	2,842ft ²
Upper Level	Terrace	148.50m ²	1,598ft ²
Lower Level	Unit	217.81m ²	2,344ft ²
Lower Level	Terrace	87.43m ²	941ft ²
Total		717.79m²	7,725ft²

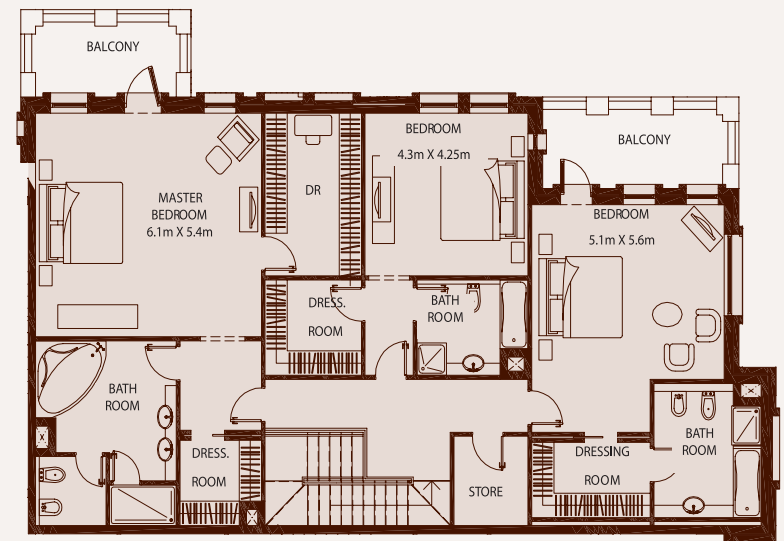


PENTHOUSES

PH1601, 1602

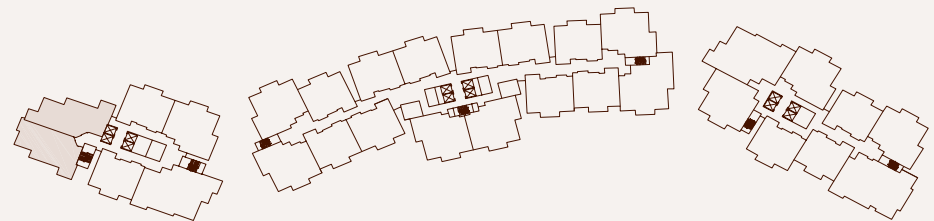


Lower Level



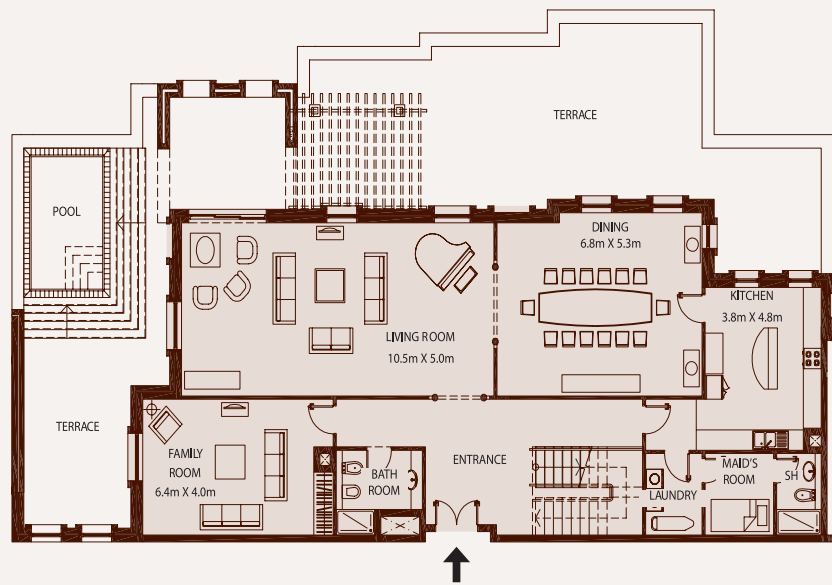
Upper Level

Penthouses - PH1601, 1602 - Approximate Areas			
Lower Level	Unit	197.33m ²	2,124ft ²
Lower Level	Terrace	64.34m ²	693ft ²
Upper Level	Unit	196.29m ²	2,113ft ²
Upper Level	Balcony	21.81m ²	235ft ²
Total		479.77m²	5,165ft²

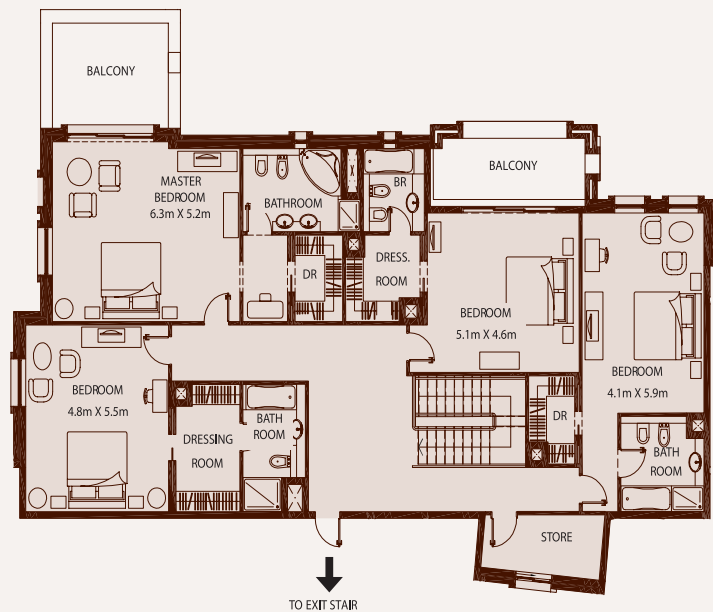


PENTHOUSES

PH202, 203

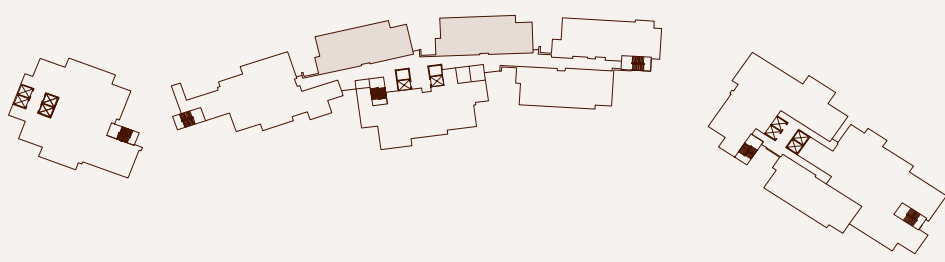


Lower Level



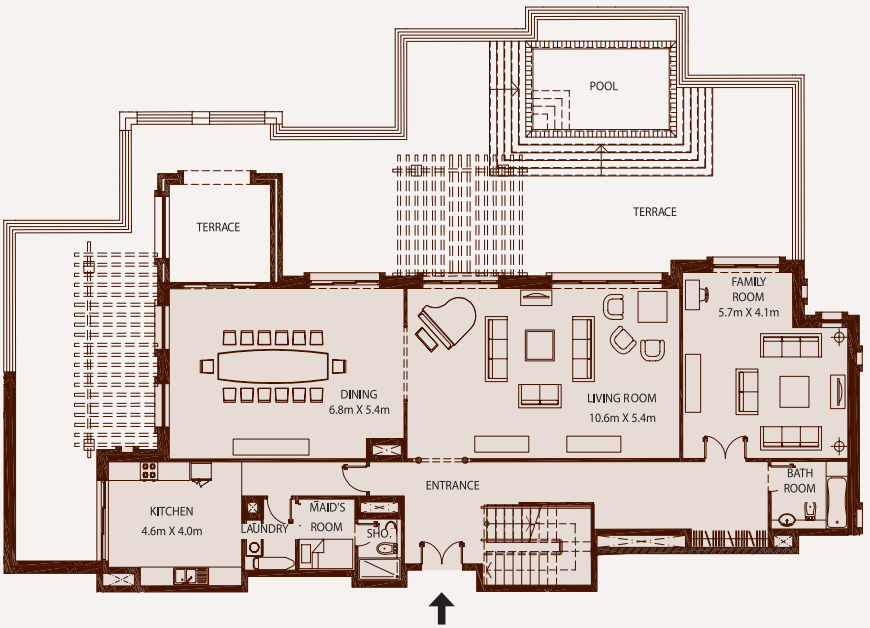
Upper Level

Penthouses - PH202,203 - Approximate Areas			
Lower Level	Unit	213.65m ²	2,300ft ²
Lower Level	Terrace	160.96m ²	1,732ft ²
Upper Level	Unit	247.33m ²	2,662ft ²
Upper Level	Balcony	29.89m ²	322ft ²
Total		651.83m²	7,016ft²

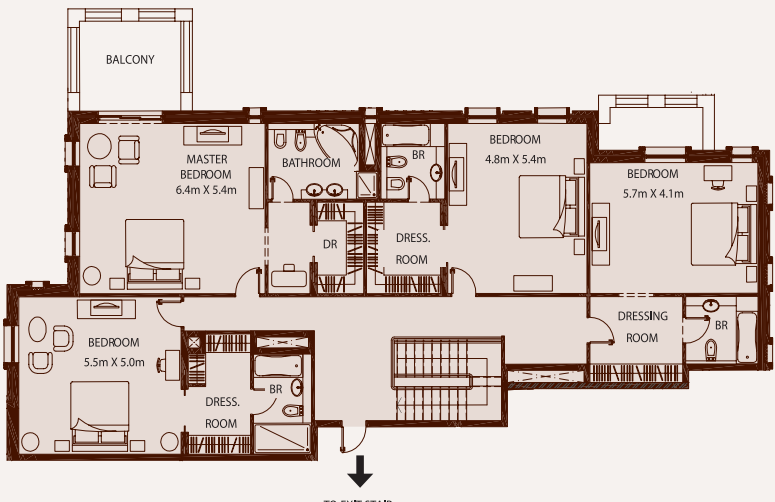


All measurements, drawings and materials are approximate. This information is subject to change without notice. The developer reserves the right to make revisions. This drawing is not to scale. Computer renderings displayed are an artist's representation of the project. Variations may occur.

PENTHOUSES PH204



Lower Level



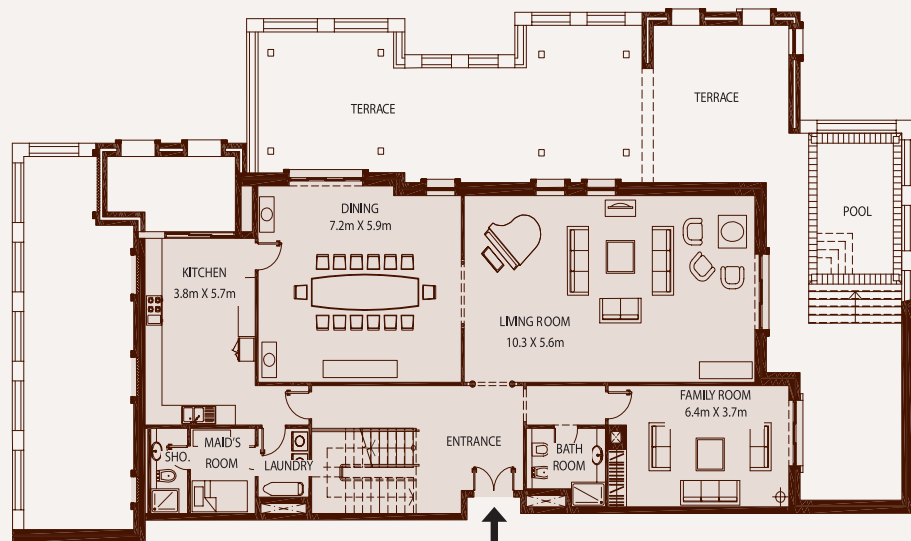
Upper Level

Penthouses - PH204 - Approximate Areas			
Lower Level	Unit	235.95m ²	2,540ft ²
Lower Level	Terrace	203.41m ²	2,190ft ²
Upper Level	Unit	244.08m ²	2,627ft ²
Upper Level	Balcony	21.33m ²	229ft ²
Total		704.77m²	7,586ft²

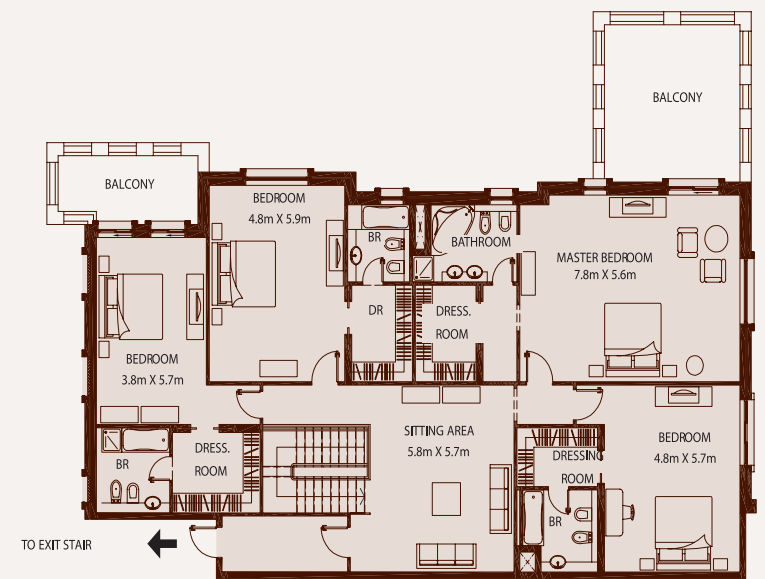


All measurements, drawings and materials are approximate. This information is subject to change without notice. The developer reserves the right to make revisions. This drawing is not to scale. Computer renderings displayed are an artist's representation of the project. Variations may occur.

PENTHOUSES PH205



Lower Level



Upper Level

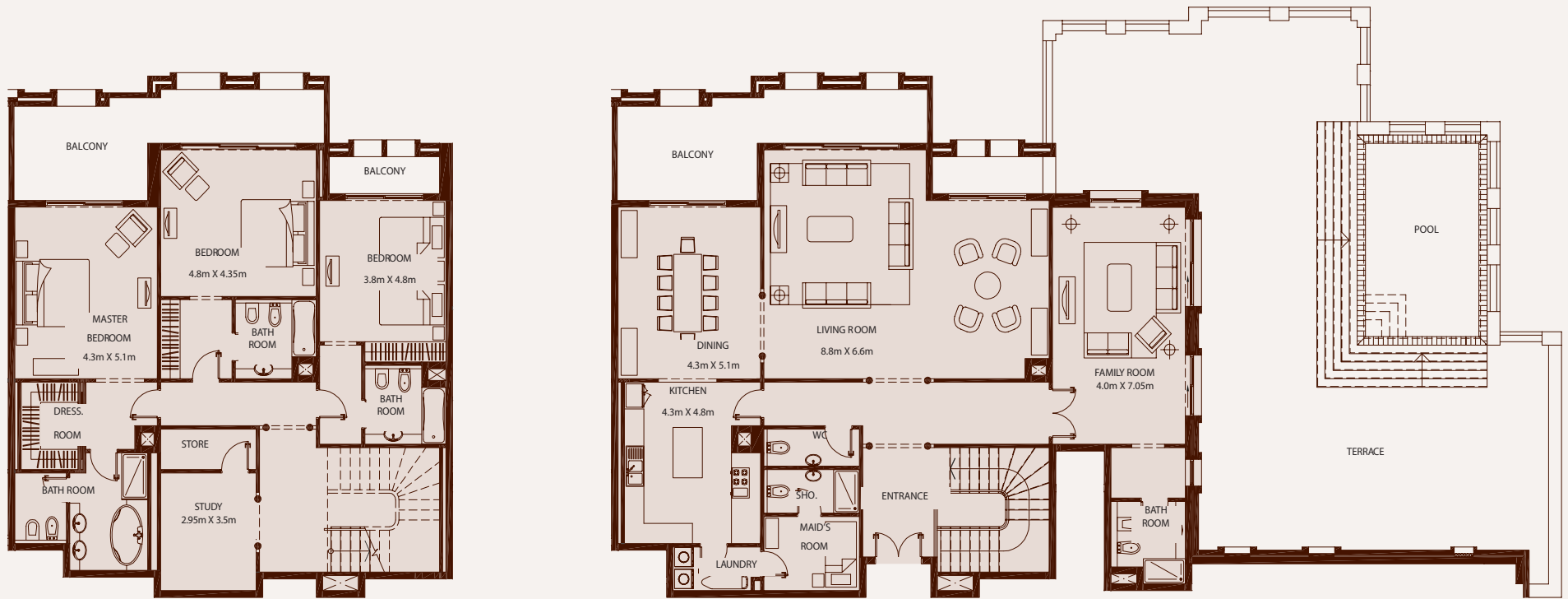
Penthouses - PH205 - Approximate Areas			
Lower Level	Unit	226.73m ²	2,440ft ²
Lower Level	Terrace	205.75m ²	2,215ft ²
Upper Level	Unit	268.59m ²	2,891ft ²
Upper Level	Balcony	42.76m ²	460ft ²
Total		743.83m²	8,006ft²



All measurements, drawings and materials are approximate. This information is subject to change without notice. The developer reserves the right to make revisions. This drawing is not to scale. Computer renderings displayed are an artist's representation of the project. Variations may occur.

PENTHOUSES

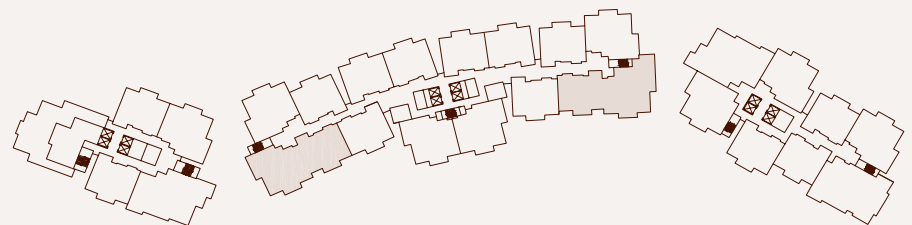
PH21003, 21012



Lower Level

Upper Level

Penthouses - PH21003, 21012 - Approximate Areas			
Lower Level	Unit	161.39m ²	1,737ft ²
Lower Level	Balcony	30.36m ²	327ft ²
Upper Level	Unit	207.27m ²	2,231ft ²
Upper Level	Terrace	204.95m ²	2,206ft ²
Total		603.97m²	6,501ft²



All measurements, drawings and materials are approximate. This information is subject to change without notice. The developer reserves the right to make revisions. This drawing is not to scale. Computer renderings displayed are an artist's representation of the project. Variations may occur.