

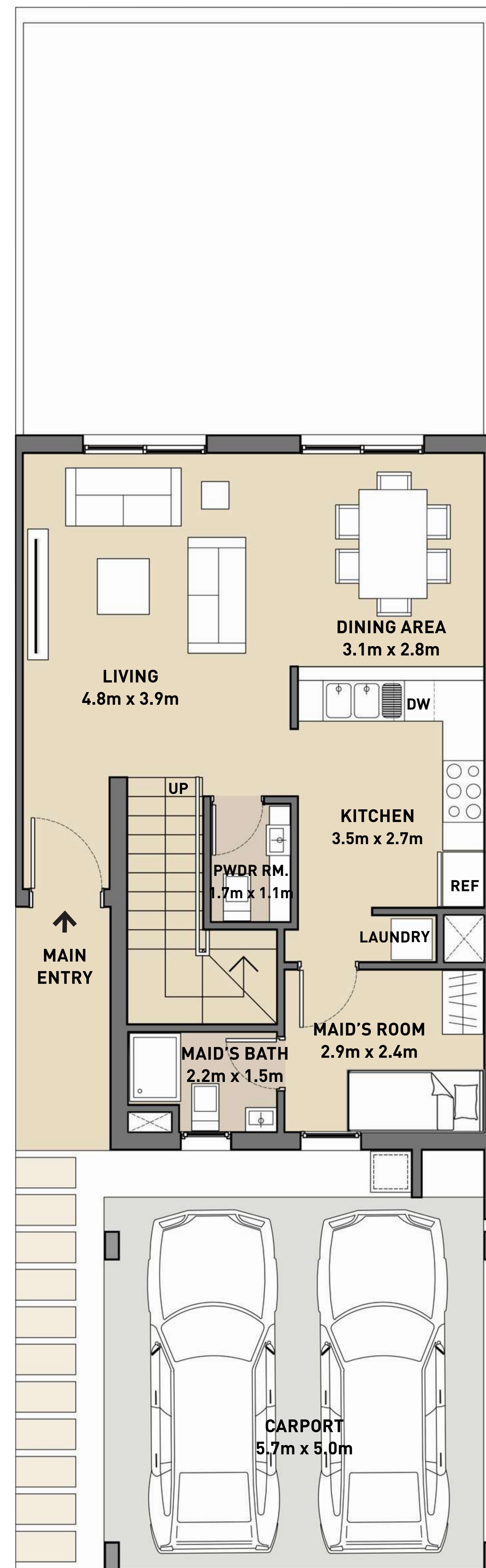
3 Bedroom Townhouse

Type A - Mid Unit

Total Area	174.79 Sq.m / 1,881 Sq.ft
Suite Area	143.44 Sq.m / 1544 Sq.ft
Carport	31.35 Sq.m / 337 Sq.ft



KEY PLAN



GROUND FLOOR

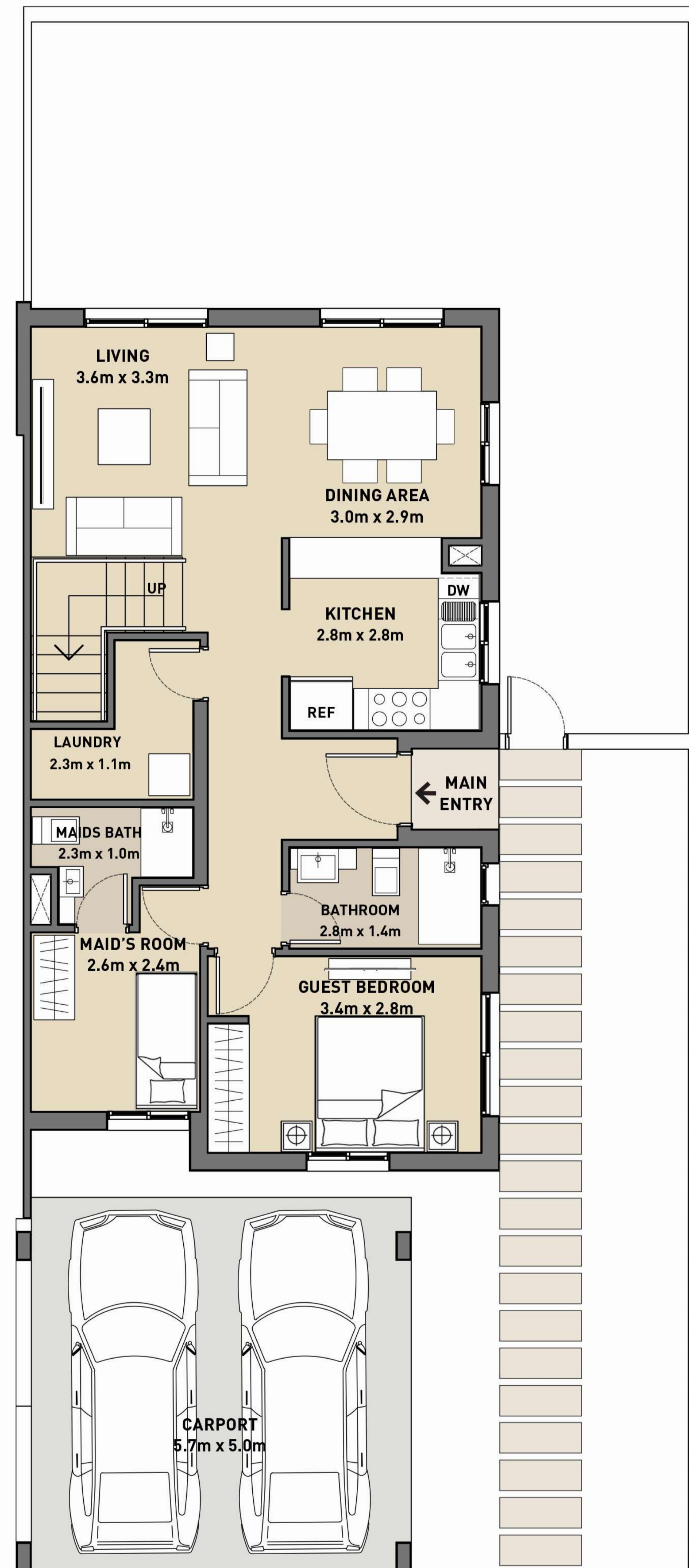


FIRST FLOOR

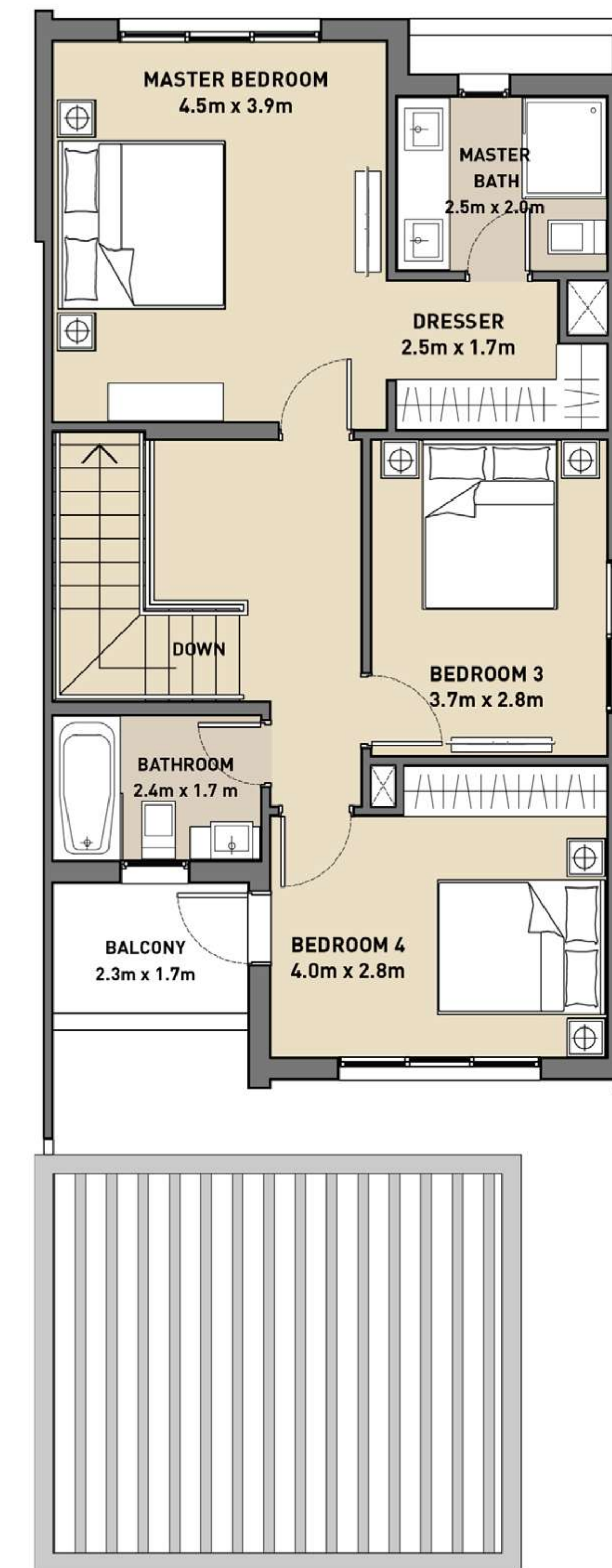
4 Bedroom Townhouse

End Unit

Total Area	205.3 Sq.m / 2,210 Sq.ft
Suite Area	169.89 Sq.m / 1829 Sq.ft
Balcony	4.06 Sq.m / 44 Sq.ft
Suite + Balcony Area	173.95 Sq.m / 1873 Sq.ft
Carport	31.35 Sq.m / 337 Sq.ft



GROUND FLOOR



FIRST FLOOR



KEY PLAN