

ONE  
PALM

Managed by

)( *Dorchester Collection*

ONE OF A KIND

SERENITY FOUND

# FIRST LIGHT

THE ART OF LUXURY LIVING





# THE ULTIMATE ADDRESS

Completed in 2006, Palm Jumeirah is unquestionably Dubai's most spectacular location and a world icon. A marvel of modern engineering, the island boasts pristine beaches surrounded by the crystal blue waters of the Arabian Gulf – a prime destination for those who can appreciate an ultra-exclusive lifestyle. This one-of-a-kind setting now features a remarkable collection of stunning residences at its most prime position. Omniyat is proud to present One Palm.



ONE  
PALM

Managed by  
Dorchester Collection





## A RESIDENCE ON DUBAI'S MOST ICONIC LANDMARK



Palm Jumeirah

Renowned for ultra-modern architecture, the finest in high-end retail and a vibrant, exciting nightlife, Dubai is the world's premier locale for lavishness and grandeur. At its heart, Palm Jumeirah represents the absolute best this pearl of a city has to offer.

With its prime position on the Arabian Gulf, already home to some of the world's most renowned five-star hotels, Palm Jumeirah is one of this metropolis' most coveted destinations.

And from this international landmark's number one plot, One Palm presents pristine beachfront living that perfectly captures the essence of Dubai's cosmopolitan allure.



TURQUOISE WATERS





AT THE CENTRE  
OF THE VERY BEST  
OF DUBAI

- |                       |   |   |                         |
|-----------------------|---|---|-------------------------|
| BURJ AL ARAB          | 1 | 5 | ATLANTIS, THE PALM      |
| ONE & ONLY THE PALM   | 2 | 6 | SOFITEL HOTEL, THE PALM |
| JUMEIRAH ZABEEL SARAY | 3 | 7 | WALDORF ASTORIA DUBAI   |
| KEMPINSKI HOTEL       | 4 | 8 | RIXOS, THE PALM DUBAI   |





# ONE

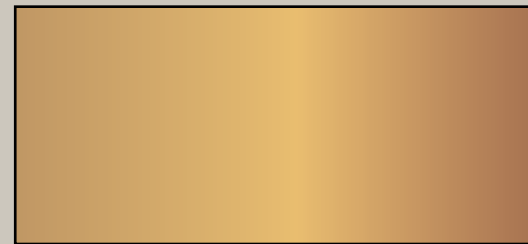
## ONE OF A KIND

One Palm is a completely re-imagined approach to elegance and exclusivity. Iconic architecture, sprawling layouts, unbeatable amenities, lush green spaces, and the most sought-after interior features make One Palm more than a residence – a veritable masterpiece of artful design and the pinnacle of luxurious living in all its aspects.





A LIMITED COLLECTION OF  
94 ULTRA-EXCLUSIVE HOMES,  
DESIGNED FOR LIFE LIVED  
IN INFINITE ABUNDANCE





# A STRIKING EDIFICE BEFITTING A WORLD- FAMOUS LANDMARK

With a stunning city skyline and the unmistakable Palm Jumeirah set upon the glimmering Arabian Gulf as a backdrop, this is your home at the world's most thrilling location. Each spectacular, light-filled residence evokes inspiration around every corner. One Palm offers a new level of sumptuous indulgence, for connoisseurs of perfection.





The timeless elegance of your home at One Palm deserves a backdrop that sets it off like a precious jewel in an elegant setting. Floor-to-ceiling glass enables you to look out over sweeping, 360-degree vistas of the Gulf and the exciting Dubai skyline in an inspiring, ever-changing display of sea, sky and light.

UNLIKE ANYTHING BEFORE IT





# ABOVE

## ABOVE IT ALL

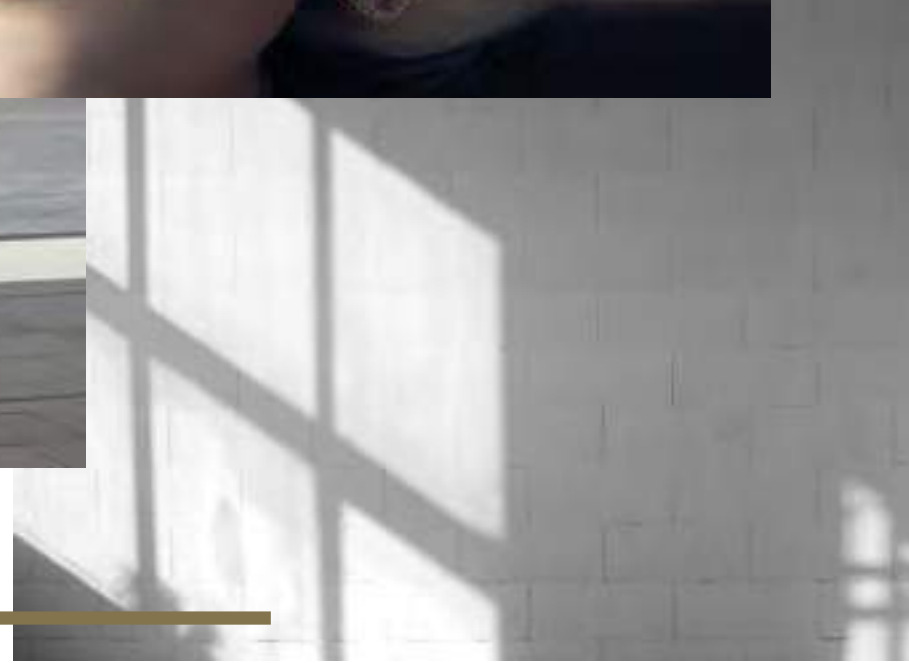
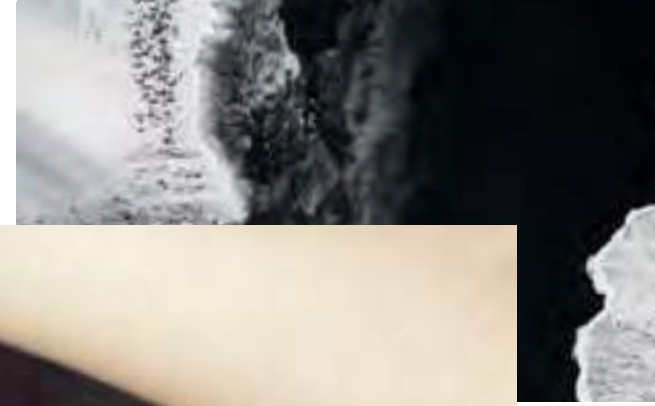
Cutting-edge architecture, exclusively designed luscious interiors, the seamless coherence of privacy and association, make your home at One Palm truly a cut above everything else. But what makes One Palm even more spectacular is the sense of freedom, infinity and true bliss that comes from enjoying daily views that encompass everything on the horizon and beyond.











Timeless Elegance

#### VIEWS TO INSPIRE

Welcome to your home, where minimalist beauty meets an exquisite, staggered layout. The strikingly consonant design of One Palm gives you both privacy and interaction. With three separate cores making up the structure, each elevator leads to no more than two residences. Working in conjunction with the natural environment, One Palm uses the brilliant natural light of Dubai along with transcendent green spaces to offer a home that is truly a unique pearl.







MANAGED BY

)( *Dorchester Collection*

---

ONE PALM IS MANAGED  
BY DORCHESTER COLLECTION,  
A 5-STAR HOTEL OPERATOR WITH  
A PORTFOLIO THAT BOASTS THE  
WORLD'S FOREMOST LUXURY  
HOTELS IN EUROPE AND THE USA.





ONE  
PALM

Managed by  
Dorchester Collection

Dorchester Collection, established in 2006, is one of the most prestigious luxury hotel management companies, with an impressive portfolio that includes nine of the world's finest and most iconic hotels in Europe and the USA.

Each hotel is an icon in its own right, a unique creation by world-renowned artists and designers, combining luxurious décor, bespoke furniture and art, masterful craftsmanship and superior design that harmonizes tradition with modernity.

Dorchester Collection is renowned for its passion for excellence and innovation. The hotels embody the culture of each city, honoring its heritage and unique style, while simultaneously bringing out a modern kind of individuality through contemporary styling and state-of-the-art facilities.



THE DORCHESTER, LONDON





When you pass through the doors of a Dorchester Collection hotel you'll experience immediately the essence of fine living, glamorous charm, refined elegance and impeccable service. And we guarantee you'll remember it forever.



AN ICONIC ADDRESS



One Palm offers its esteemed residents the total convenience of the superb A la carte Services, making everyday living absolutely effortless.

You have at your disposal a range of services, from classics such as maintenance, doorman and valet parking, to premium services that include housekeeping, in-residence catering, unique dining events, and a butler.

The exclusive concierge is here to assist with an expert tailored selection of dining choices, events, venues, tickets, and everything else you need for a dynamic social and cultural life in the city.



- CLASSIC
- COMMON AREA MAINTENANCE AND CLEANING
  - CONCIERGE SERVICES
  - VALET PARKING
  - LIFEGUARD AND GYM SERVICE
  - SECURITY SERVICES

- A LA CARTE
- HOUSEKEEPING, LAUNDRY, MAINTENANCE, BESPOKE IN-RESIDENCE CATERING SERVICES
  - ONE-OFF DINING EVENTS, FUNCTIONS





)( *Dorchester Collection*

# AROUND THE WORLD



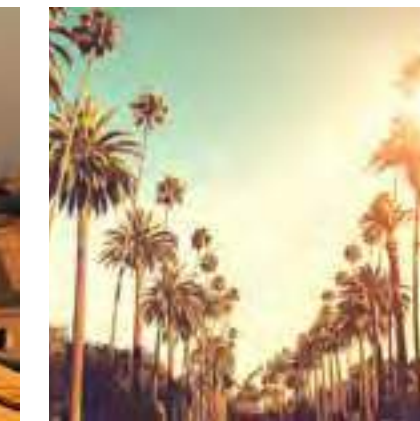
UK  
LONDON & ASCOT



FRANCE  
PARIS



ITALY  
MILAN & ROME



USA  
BEVERLY HILLS & LOS ANGELES





HÔTEL PLAZA ATHÉNÉE, PARIS



HOTEL BEL-AIR, LOS ANGELES

Dorchester Collection proudly encompasses the best locations in the world, including Park Lane in London, Sunset Boulevard in Beverly Hills, rue de Rivoli and avenue Montaigne in Paris, Via Ludovisi, Piazza della Repubblica in Milan, Stone Canyon Road in Los Angeles and Ascot in Berkshire.

They are the only luxury hotel company in the world with a consistent portfolio of truly iconic properties.

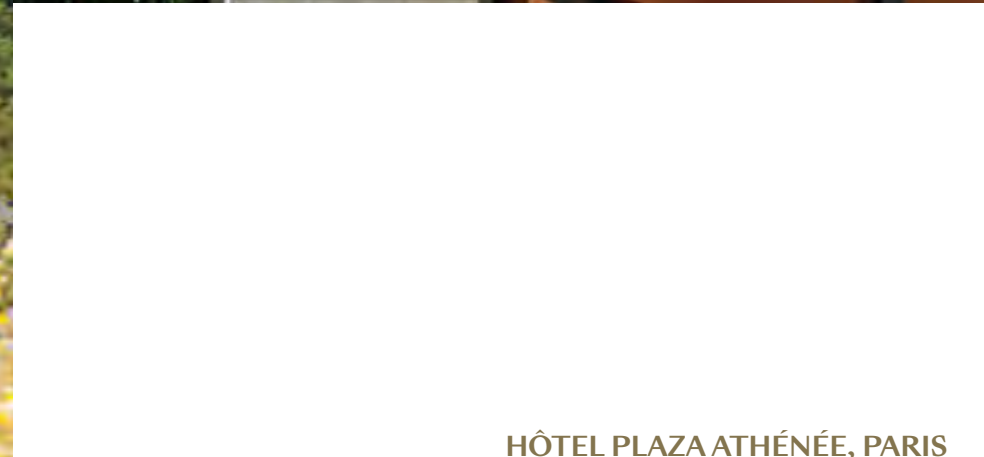
Dorchester Collection hotels are favoured by celebrities, world leaders, royalty and high society - in each city they are quite simply the place to be.



COWORTH PARK, ASCOT



45 PARK LANE, LONDON



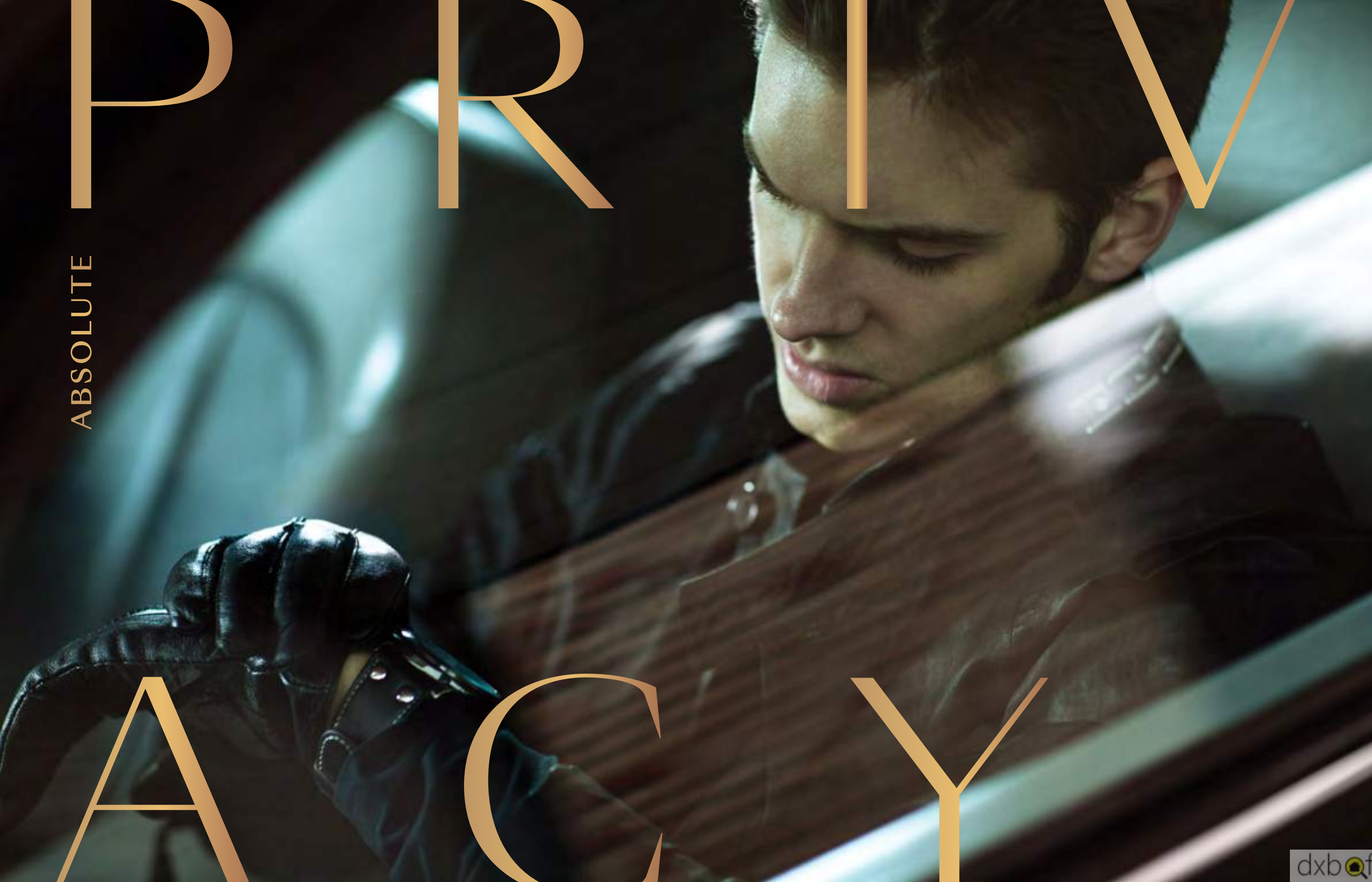
HÔTEL PLAZA ATHÉNÉE, PARIS



LE MEURICE, PARIS







ABSOLUTE

PRIV

ACY

SEAMLESS SECURITY ACCESS

DISCREET CCTV

STRICT IDENTITY VERIFICATION POLICY

PRIVATE JETTY

AUTOMATED GATES

SUPERSIZED PARKING SPACES





## MAJESTIC ARRIVAL

Every trip home to One Palm is an occasion of unparalleled exhilaration, as the automated gates open to reveal a stunning layout featuring reflection pools and waterfalls.

Drive up to your residence in style along a pristine courtyard lined with signature artistic centrepieces from the world famous landscape architect, Vladimir Djurovic.

The beautiful panorama leads straight to the upper ground floor with a convenient and private valet drop-off area.



## EXCLUSIVE ACCESS

As you make your way up to the spectacular lobby of One Palm, your car is taken down to its spacious parking place. In a building of 94 exclusive units, One Palm features over 400 car parks.

Supersized spots ensure your high performance machine or vintage beauty has ample space. The parking area also includes particular zones clearly marked for charging batteries and car grooming.



## Breathtaking Welcome







ONE PALM'S IDEAL POSITION  
AT THE TRUNK OF PALM  
JUMEIRAH PROVIDES RESIDENTS  
A PRIVATE JETTY FOR ARRIVAL  
BY SEA DIRECTLY FROM THE  
ARABIAN GULF.



# 1st

## SCENIC MASTERPIECE

One Palm is a genuine haven of majestic natural beauty and absolute privacy. It's designed to provide the utmost comfort through the perfect symmetry of ingenuity and natural grace.







EXQUISITE AND REMARKABLE



Plunge Pool

INFINITE BEAUTY

World-renowned master landscape architect Vladimir Djurovic has brought his groundbreaking vision to One Palm to create an awe-inspiring timeless landscape. At One Palm nature takes center stage. Light and mist dance throughout green gardens, offering a flawless balance of sustainability, beauty and serenity.

With lush horticulture, pure layouts and unique details the landscape inspires a sense of deep relaxation, comfort and well-being. A connection to nature and its infinite beauty emanates from its holistic integration into the design and living experience.







"OUR GUIDING DESIGN  
PHILOSOPHY IS TO PUT  
NATURE AT CENTER STAGE"

— Vladimir Djurovic

Moving up through the building from the lower ground floor through to the exquisite penthouse gardens, the character of the landscape changes from shaded, earthy and textured to open, airy and luminous. Water is also a constant feature throughout this unprecedented residence. With water mirrors in the main lobby, and glistening and soothing elements throughout, you'll get the feeling of being in a modern oasis of luxury.



## BREATHTAKING DRIVE

The grand, cobblestone drive of One Palm is set off by, and contrasts with, the clean lines and angularity of a stunning, modern water feature. Punctuated by shade trees, plantings and stone slab bridges that invite interaction, the drive is a memorable experience for visitors and residents alike.





EXOTIC VEGETATION

The building emerges from a tropical forest that extends all the way to the beach. Lush gardens with dense, exotic vegetation offer a shaded environment around a series of water elements that frame the architecture.



Lush Gardens



TROPICAL FOREST







Highly textured, natural materials characterize the ground level gardens, providing a solid base that anchors the entire project. These gardens cater to diverse uses and experiences, from big gatherings to more intimate and contemplative moments.



## LUXURIOUS LIVING

Once we move up to the apartment terraces, the textures and materiality turn more architectural following those of the interior. The building offers gardens for luxurious outdoor living to its residents in their own private terraces. Vegetation, green screens and water elements enrich the outdoor living experience of these spaces.







# THE PERFECT BALANCE OF LUXURY AND TRANQUILITY

The outdoor terraces of each One Palm home are a site to behold. Framed by inspiring views of the Arabian Gulf and the city beyond, they feature refreshing plunge pools, ample space for relaxing or entertaining, and natural touches that sooth and relax. The terraces are indeed an ultra-luxurious feature, the symbol of a unique kind of freedom and unsurpassable level of comfort.





# NOEL

## BRILLIANTLY HANDCRAFTED

The residences at One Palm are crafted, carefully considered environments, melding the energy at the heart of one of the world's most dynamic, young cities with the tranquility and solitude of a unique, inspiring sanctuary. Two of the world's most forward-thinking firms, Super Potato and Elicyon, have brought to life their own unique, yet symbiotic visions – each a masterpiece of interior design. Each space takes its cues by looking both outward to reflect the vibrant spirit of Dubai, while looking inward at the unique character of those who will find their refuge here, creating extraordinary homes that are a celebration of life lived to the fullest.





WELCOME TO A WORLD  
WITHIN A WORLD. YOUR WORLD,  
BEARING YOUR DISTINCTIVE  
SIGNATURE OF ELEGANCE AND  
EXCLUSIVITY, WHILE OFFERING  
PEACE AND SECURITY TO ALL  
WHO ENTER AND LIVE HERE.



Conceived to allow for easy access and interaction within the development or complete privacy for those seeking solitude, One Palm's three separate cores include private and semi-private lift lobbies leading to no more than two residences. From the moment you alight onto your personal lift lobby, your senses are treated to a feast of details, brilliantly handcrafted into forms that are familiar, calming and pleasing to the soul. Each piece of fine furniture, each object d'art is custom curated by you, with the careful eye and guidance of true masters of interior design.



NATURAL  
DESIGN



"The original inspiration for One Palm comes from the use of stone, wood, metal and glass to create the feeling of living in the air and living amongst nature. We restructured the visual and physical attributes of materials found from legendary Japanese architecture and tearooms – iron, timber, natural stone, and bricks – to incorporate into our design to enhance the beauty of the space. I believe this is a new method of expressing natural forms. Furthermore, the importance of our design is the feeling of natural changes around us such as water, clouds, wind and light and how to express these feelings through design."

*M. Sugimoto*

Takashi Sugimoto  
President  
SUPER POTATO CO. LTD.





## NATURAL AESTHETIC

Based in Japan, the internationally acclaimed design firm Super Potato is renowned for fashioning spaces that blend an Asian sensibility while celebrating the unique character of each project's location. For their design, they use natural stone and woods with glass and steel to craft a minimalist environment that is surprisingly warm and inviting. Rounded, highly tactile forms that hearken back to George Nakashima, Isamu Noguchi and other mid-century modern classics can be found in the furniture and fittings.



Super Potato



## UNIQUE CHARACTER





## NATURAL DIVERSITY

The striking architectural edifice of One Palm belies the surprising tranquility enveloping the inviting, expansive interior spaces of its common areas. Their calming, minimalist yet elegant feel has been meticulously planned by famed interior firm Super Potato. From its lobby and corridors to the fitness centre, spa and business centre, residents are treated to a palette of natural, organic materials that are a feast for the senses – floors in grey and silver travertine, crown marble, woods of walnut, solid white oak and smoked eucalyptus, with accents of stainless steel hairline finishes to name only a few.





The secure private entrance to the Super Potato imagined and realized penthouse recalls elegant affluence, a tradition of hospitality, and creates a relaxing, grounding experience.

Rich and solid wood, delicate ambiance lighting, carefully selected artwork and ornaments that are both international and local in character, create a gracious, pleasant environment, a truly warm welcome home.

The entrance is a preview of the style and elegance of the entire apartment, a sneak peak into the wonderful world designed for One Palm by Super Potato.







Floor to ceiling windows flood the living area with light by day, as well as truly awe-inspiring views by night. The feeling is expansive and impressive, yet completely comfortable and inviting.





## INTIMATELY BEAUTIFUL

The Super Potato designed apartment is opulent yet refined, delicate yet bold, soothing yet inspiring. Its beauty is achieved through many interconnected layers and elements.

Intimate, diverse and soothing lighting, tasteful and elegant ornaments, inspiring artwork, different yet compatible materials and textures are just some of the elements that come together to create a lovely interplay of grace and timeless elegance.



A World of Distinction







The natural design and intimate feel of the penthouse comes to life strikingly in the living area.

The impressive feature wall invokes tradition and erudition, where culture and art are an integral and pivotal element of everyday life.

The view displays simultaneously the majesty of nature and the ingenuity of manmade creation, the contrast between the sea and the sky, the modernity of Dubai and the infinity of the horizon.

The comfortable, discreet furniture creates a cosy space where one can contemplate, admire and be inspired.













Beyond ample storage for your wardrobe, the generous walk-in closets have views that amaze and invigorate.



The understated elegance of the master bath melds a Zen-like, minimalist feel with the warmth of wood and stone elements.



Blissfully Calm







A thoroughly intimate space, replete with furnishings and a colour palette that induce a perfect sense of calm and serenity.

Relaxing Design





The background of the entire image is a close-up, high-resolution texture of a light-colored marble. It features intricate, flowing veins in shades of cream, off-white, and pale yellow, set against a slightly darker, greyish-white base. The veins vary in thickness and direction, creating a dynamic and organic pattern.

TIMELESS  
DESIGN





#### MINIMALIST AESTHETIC

Acclaimed designers of London's One Hyde Park, Elicyon creates unique, customized spaces that elevate luxury interior design to an artform. The interior scheme in the penthouse conceptualized by Elicyon is sophisticated and modern, complementary in all aspects to the breathtaking panoramic beach views.

Natural materials and finishes, from lacquered wood and leather to stone and silk, converge in a glamorous, streamlined fashion. Elicyon's minimalist aesthetic highlights the interplay of interior and exterior motifs, in a timeless stunning look.



#### CLASSICALLY ELEGANT



Acclaimed Designers





The entrance to the Elicyon-designed apartment reflects and introduces the key elements of their world-renowned design and showcases their ingenuity in mimicking the natural landscape through interior spaces.

Diverse elements, materials and textures, such as smooth marble, different forms and shapes of glass and crystal, and diverse sea-inspired hues establish a continuity between the interior space and the stunning exterior landscape that inspired it.







"THE BIGGEST  
PIECE OF ART IN THIS  
PROPERTY IS THE VIEW"

— Charu Gandhi  
Architect, Founder and Director of Elicyon







## FUNCTIONAL ELEGANCE

With such a view it's hard to imagine a better place for entertaining guests, throwing a lavish dinner party, and enjoying the simple pleasures in life.











"FOR ME, THIS SPACE CULMINATES  
IN THE SCREENS AND THE ARTWORK  
FRAMING THE STUNNING VIEWS.  
ALL SEEN THROUGH THE LENS OF  
BEAUTIFUL TEXTURES AND MATERIALS"

— Charu Gandhi  
Architect, Founder and Director of Elicyon

The double living room is exquisite and magical. The splendid pieces of furniture, glass and metalwork, emerald greens and vintage metal are all bespoke and commissioned specifically for this extraordinary space.

The stunning feature wall divides the sprawling living room into a more formal section, perfect for entertaining, open to the world both from inside and outside, and a second, more intimate, pensive, and comfortable space.



# THE COMFORT OF STYLE

This secluded yet transparent nook is created through the playful use of an abstract arabesque pattern in the mashrabiya screens. The design creates a reference to traditional Middle Eastern architecture, creating an intimate space. Its simple, minimalist design allows for order and clarity, inspires work and efficiency, providing the possibility both to connect and disconnect, depending on your business, work or study needs.



Multi-Purpose Spaces







EYE-OPENING DESIGN

Beautiful Awakening







The luxury wardrobe space is specifically designed to protect your essentials, but also to display and reflect your unique sense of style.



One of the top luxurious features of the sleek and elegant bathroom is the generous bathtub with a front-row view of the sea, the sky and the city - indeed a hallmark of truly affluent living.







Natural Flow

Elicyon has incorporated the natural inspiration for the design of the apartment in each and every aspect, including a range of interesting elements such as the beautiful hand painted silk wallpapers, which blend the use of luxury materials with bespoke craftsmanship and detailing.





The media and family room is yet another secluded, comfortable space that allows you to disconnect from the everyday world and instead connect with your loved ones. You can enjoy a variety of entertainment options in the ultimate luxury style.

