An aerial photograph of Dubai, United Arab Emirates, showcasing its artificial islands and skyline. The image features the Palm Jumeirah in the foreground, with the Atlantis, The Palm hotel prominently displayed. The city's skyline, including the Burj Khalifa, is visible in the background under a clear blue sky. The water is a vibrant turquoise color. A semi-transparent green circle is overlaid on the left side of the image, containing text.

Dubai's world class physical infrastructure has played a pivotal role in establishing the city as a global hub for both trade and tourism.



- ✦ Dubai Mall
- ✦ Man made Islands
- ✦ Business Hub



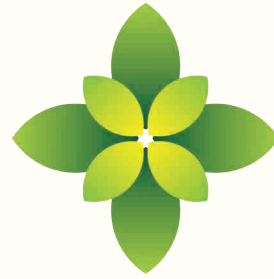
- ✦ Expo 2020
- ✦ World Connect
- ✦ Hospitality



A romantic couple is captured from behind, running along a sandy beach towards the ocean. The scene is bathed in the warm, golden light of a sunset. The man on the left is wearing a patterned short-sleeved shirt and shorts, while the woman on the right is in a dark, patterned dress. They are both splashing through shallow water, with droplets of water suspended in the air around them. The sky is a mix of bright yellow and soft orange, with a few birds visible in the distance. A semi-transparent yellow horizontal band is overlaid across the middle of the image, containing the text.

LIVE THE LIFE

PRESENTING



ALCOVE

— ENGULF YOUR SENSES —

Over the last three decades, Grovy has succeeded in building a reputation that rests strongly on a customer centric approach. The experienced architects, designers, and planners, have developed a much sought after 'boutique' apartment style, which is a far cry from the traditional apartments that many organisations are now looking to move to.

Alcove's unique design lives up to its name, with all space being artistically maximised with the clever and efficient use of outdoor space. The development has been designed to maximise energy efficiency throughout the building, following the Green Building Code. Another key feature is the G+5 structure, where terraces have been carved out to provide unique private spaces for our select occupants.

Grovy presents this project with great experience, enthusiasm and knowledge to the market of Dubai's market.





PROJECT HIGHLIGHTS



- ✦ **Ensuite Bathrooms**
- ✦ **24 Hours Security**
- ✦ **Marble Lobby**
- ✦ **Build-in Wardrobes**

- ✦ **3 Lifts**
- ✦ **Covered Parking**
- ✦ **Private Terraces**
- ✦ **Outdoor Pool**





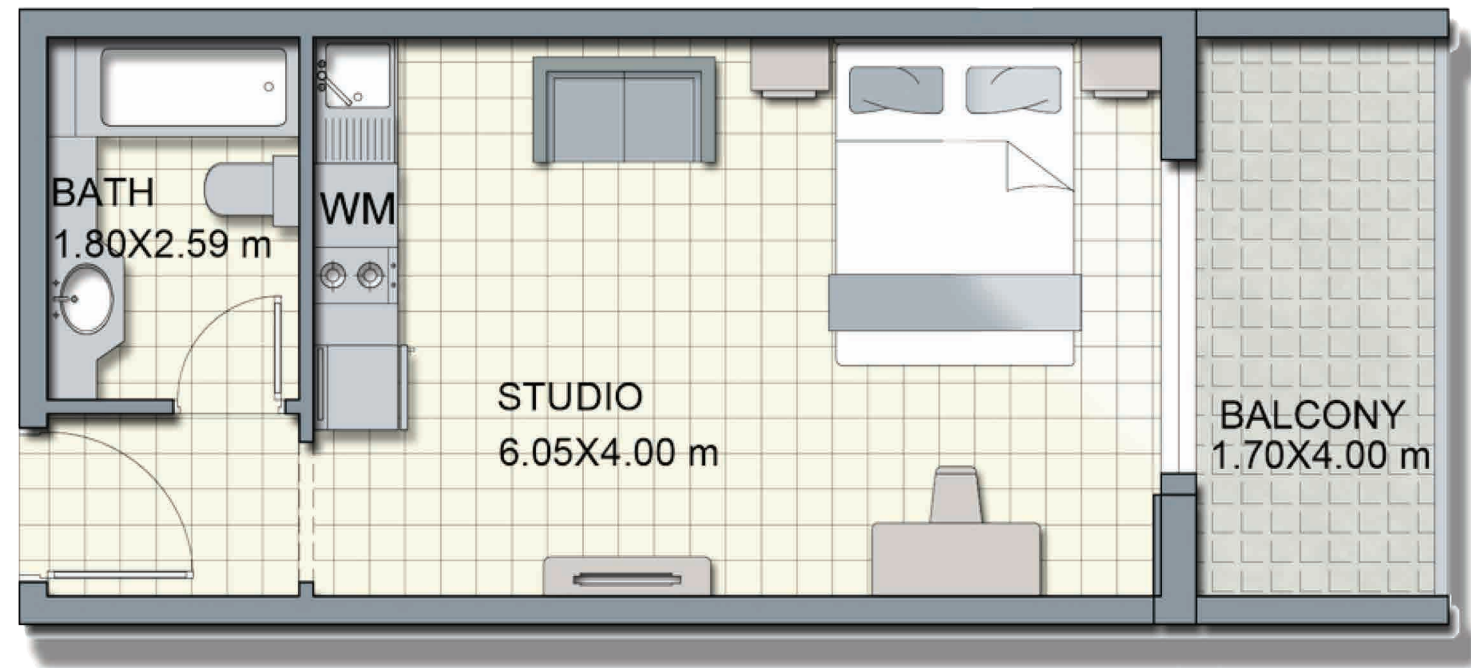
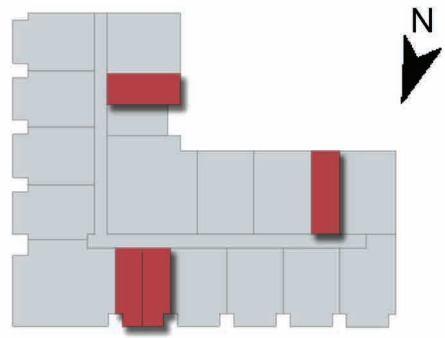
*Create your home with your own
personal memories
and art.*



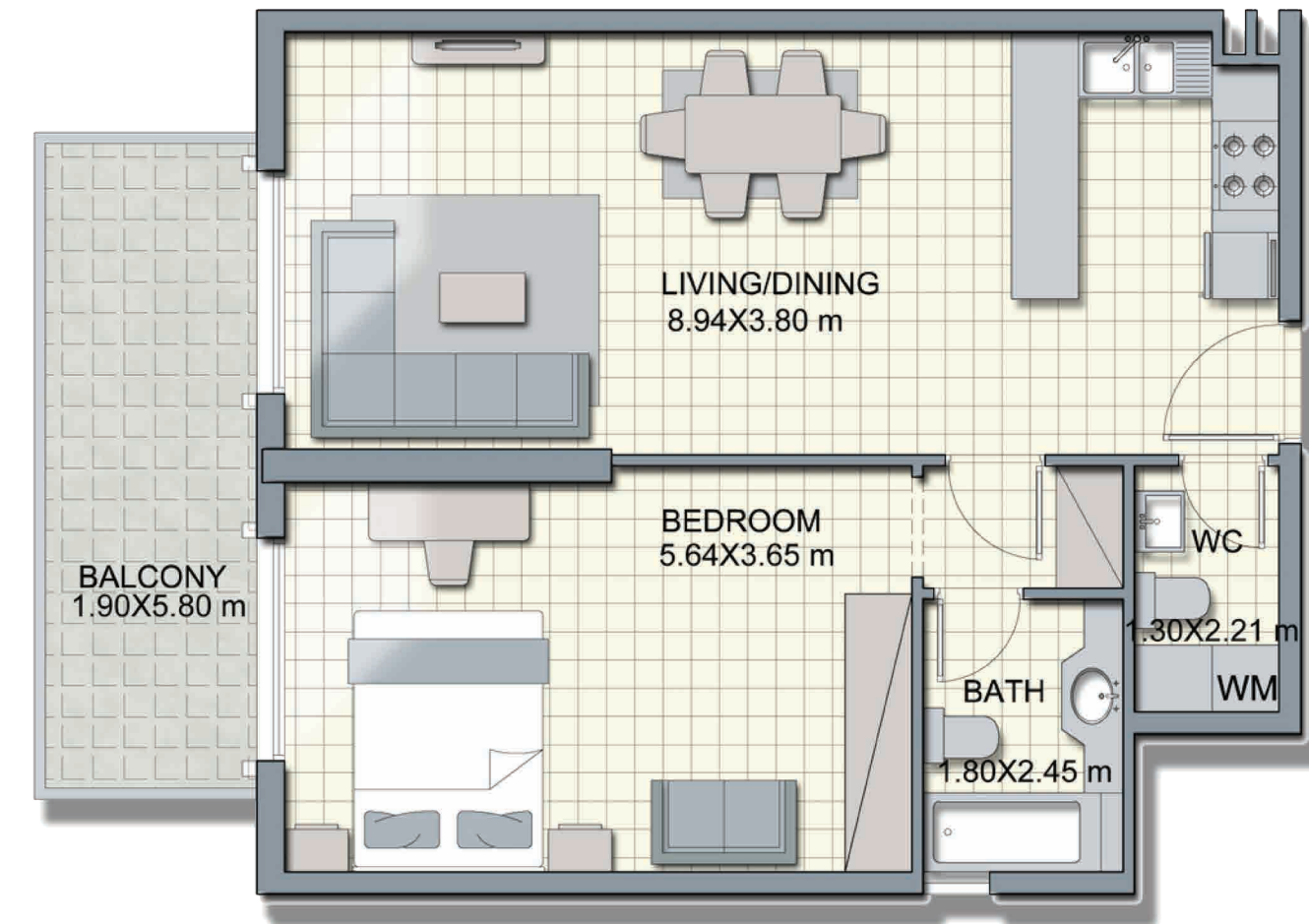
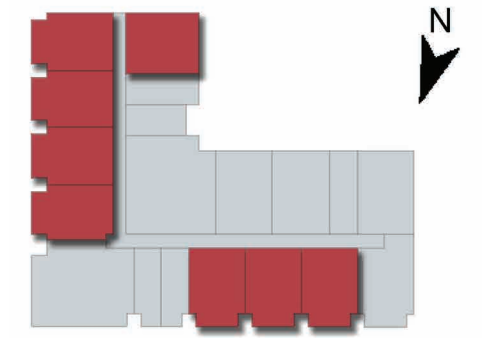




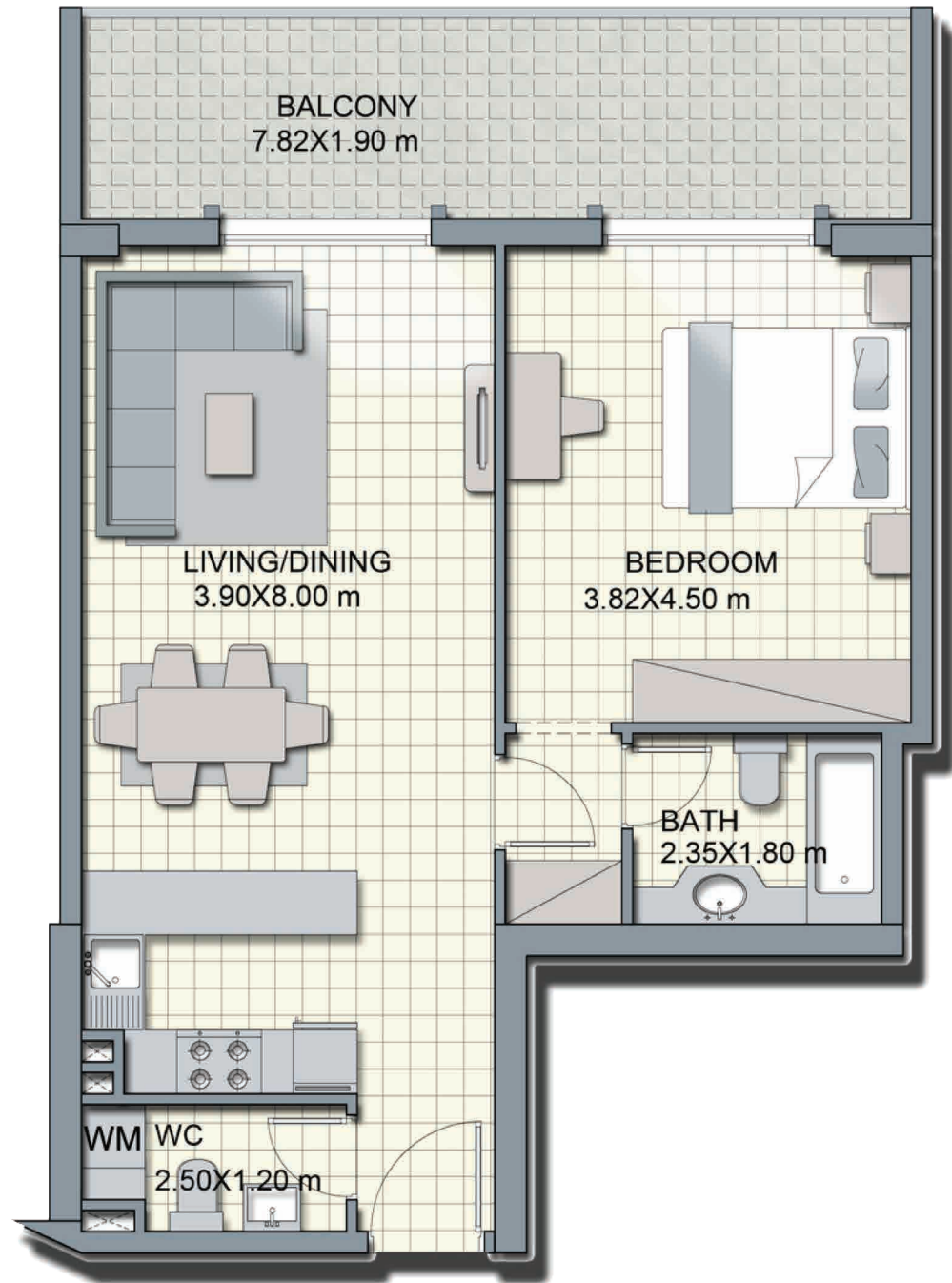
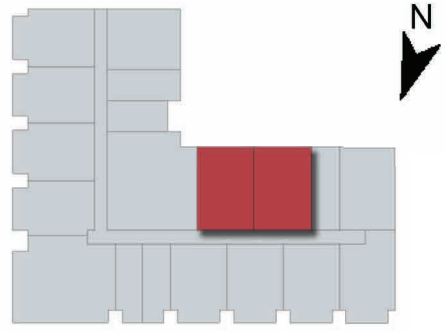
*Jumeirah Village Circle is
a community with a focus
on family and well being.*



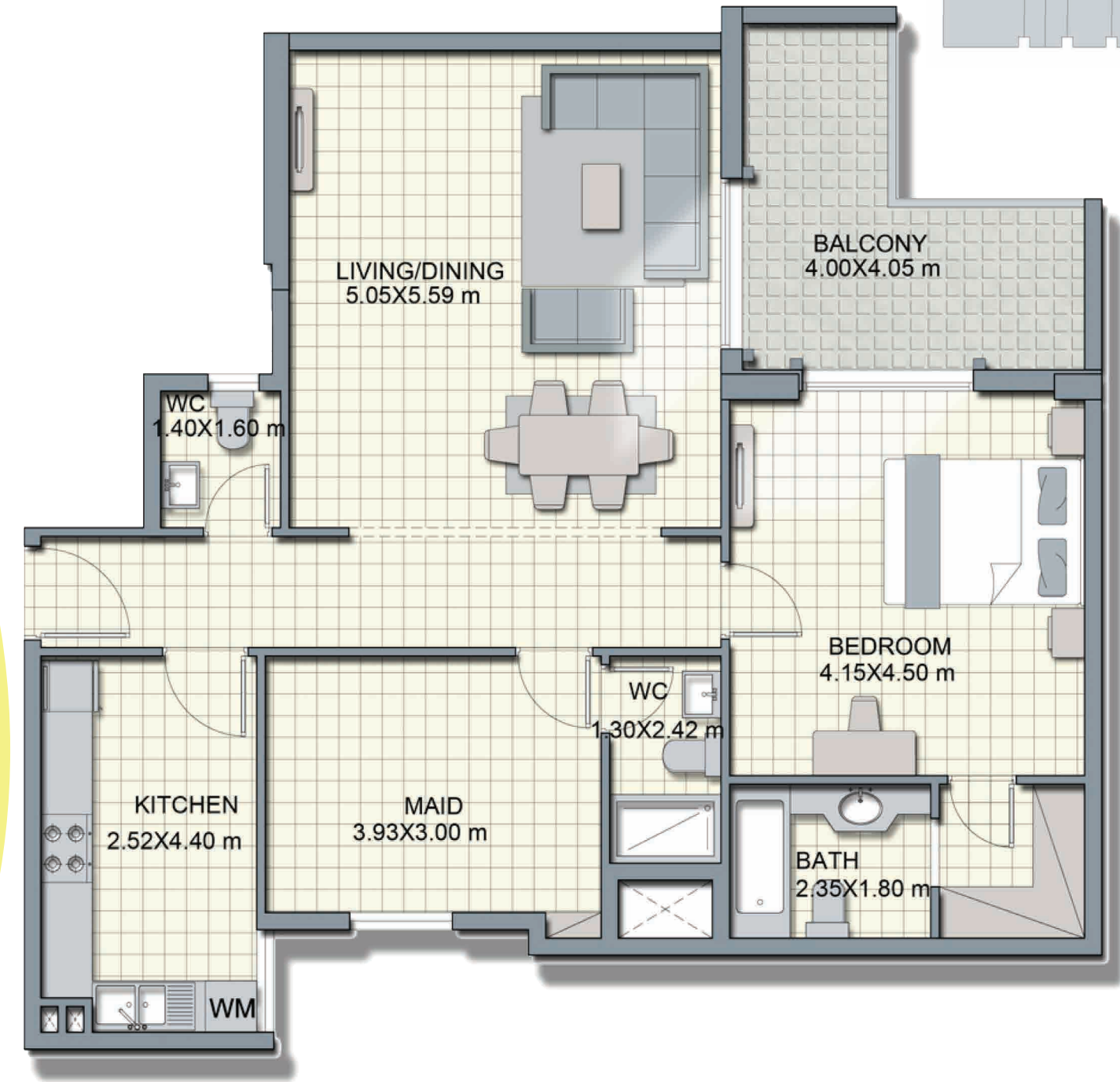
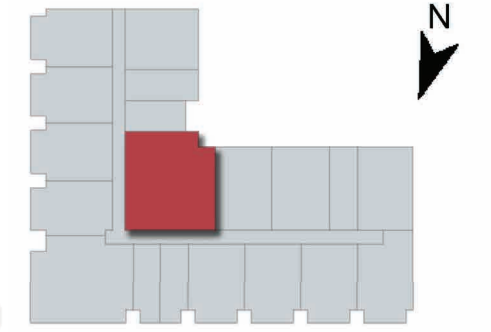
Studio - C1
Total Area 439 - 488 Sq. Ft.



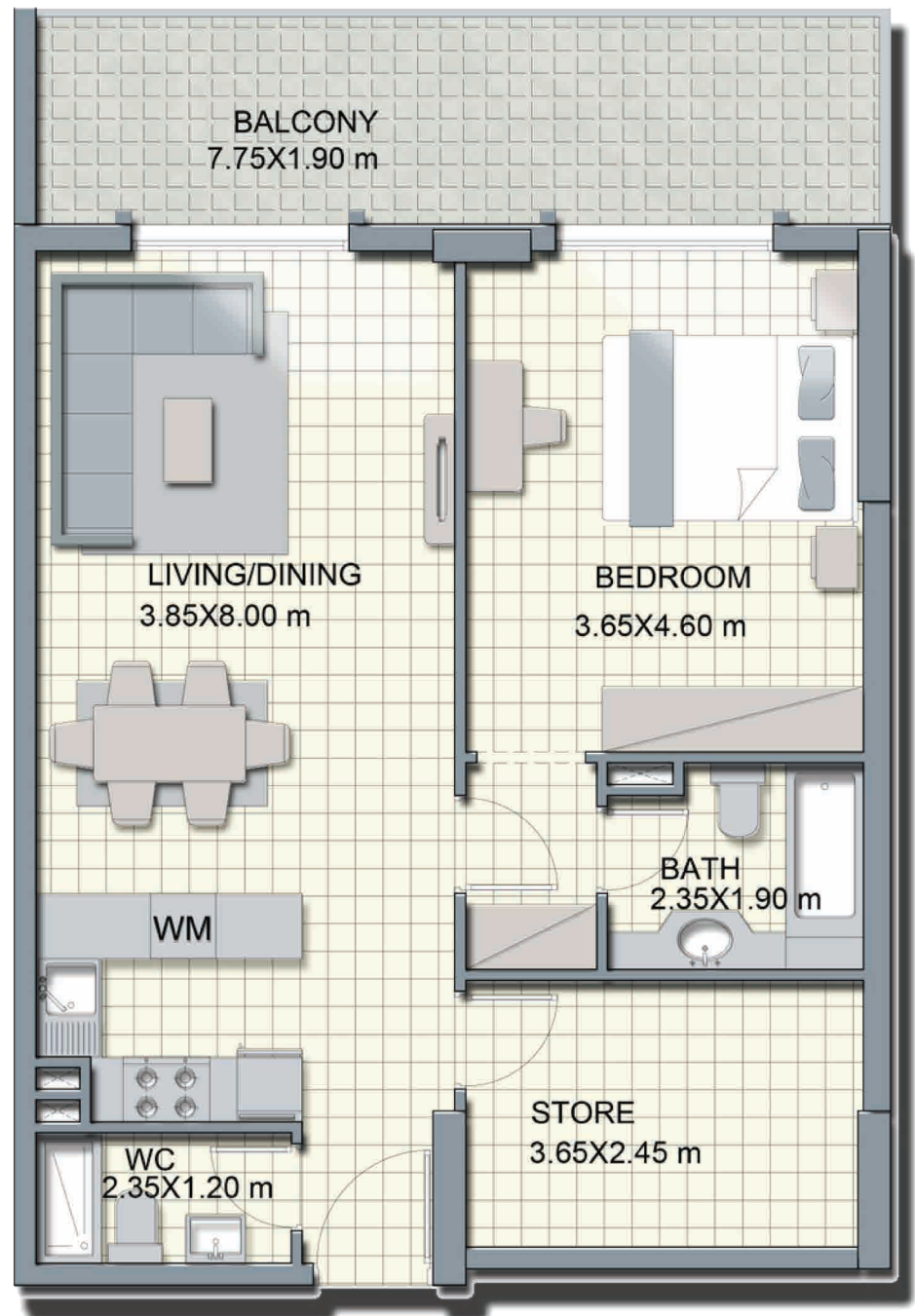
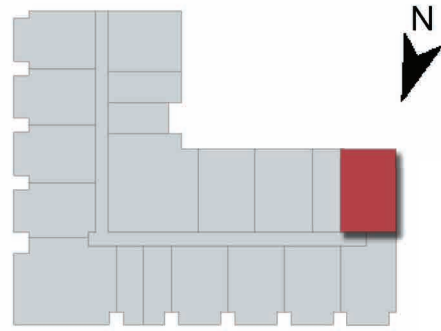
1 Bedroom - A1
Total Area 865 - 1048 Sq. Ft.



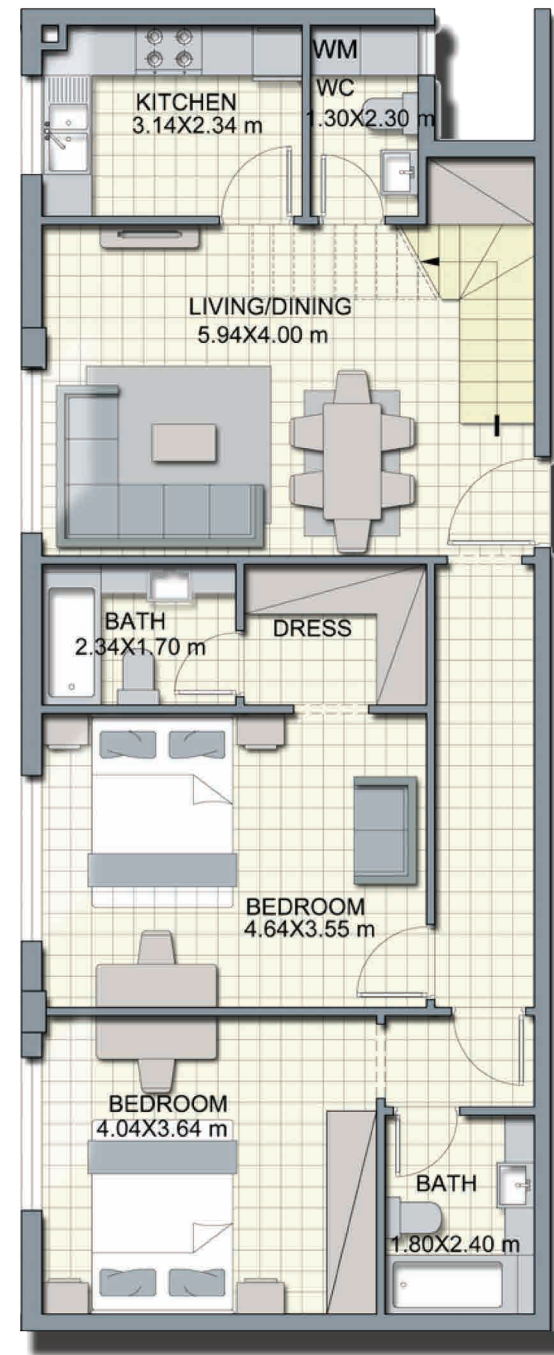
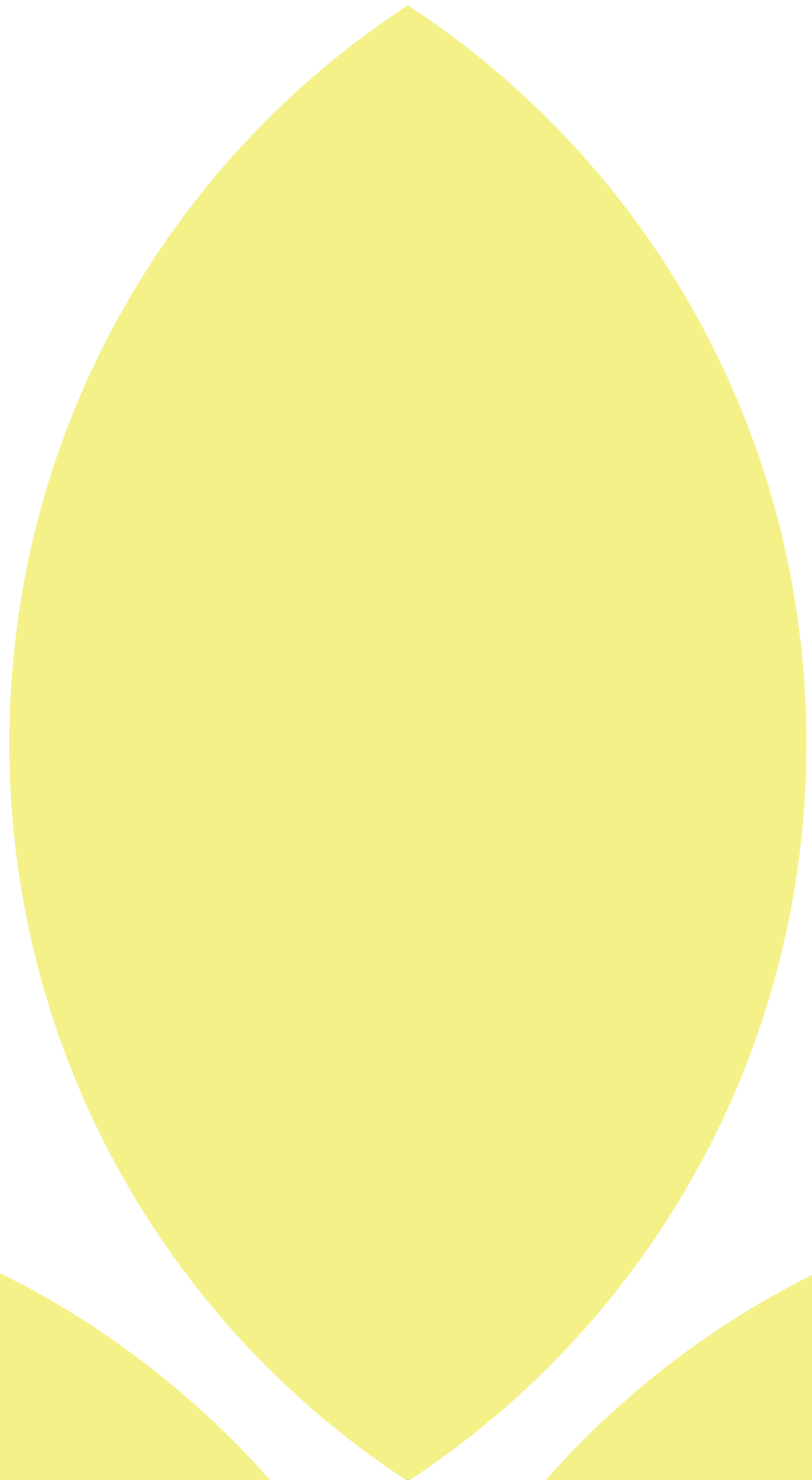
1 Bedroom - A3
Total Area 825 - 873 Sq. Ft.



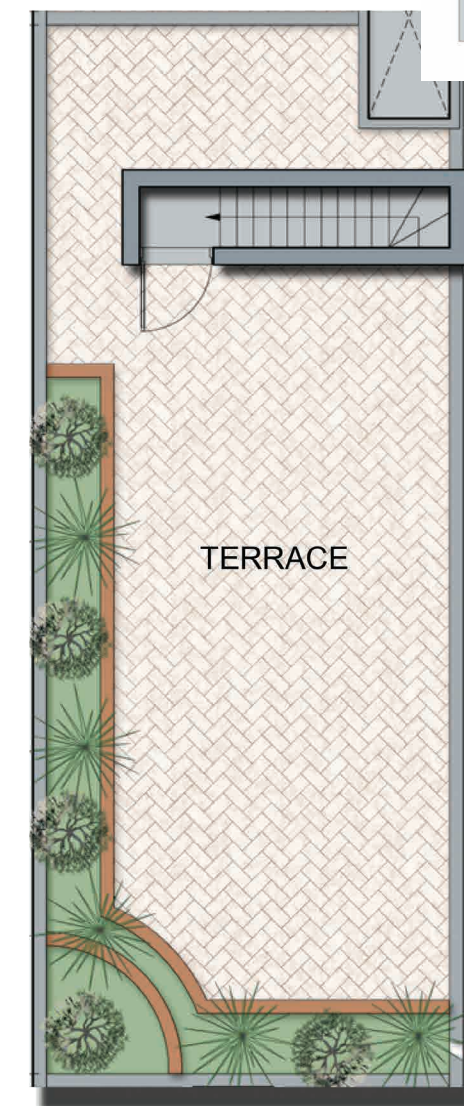
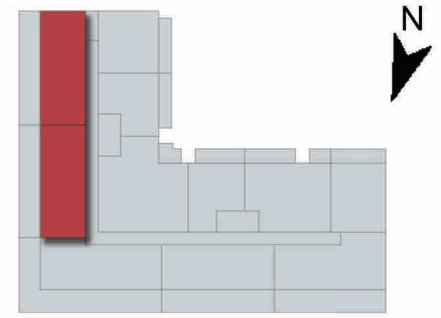
1 Bedroom + Maid - A4
Total Area 1182 - 1236 Sq. Ft.

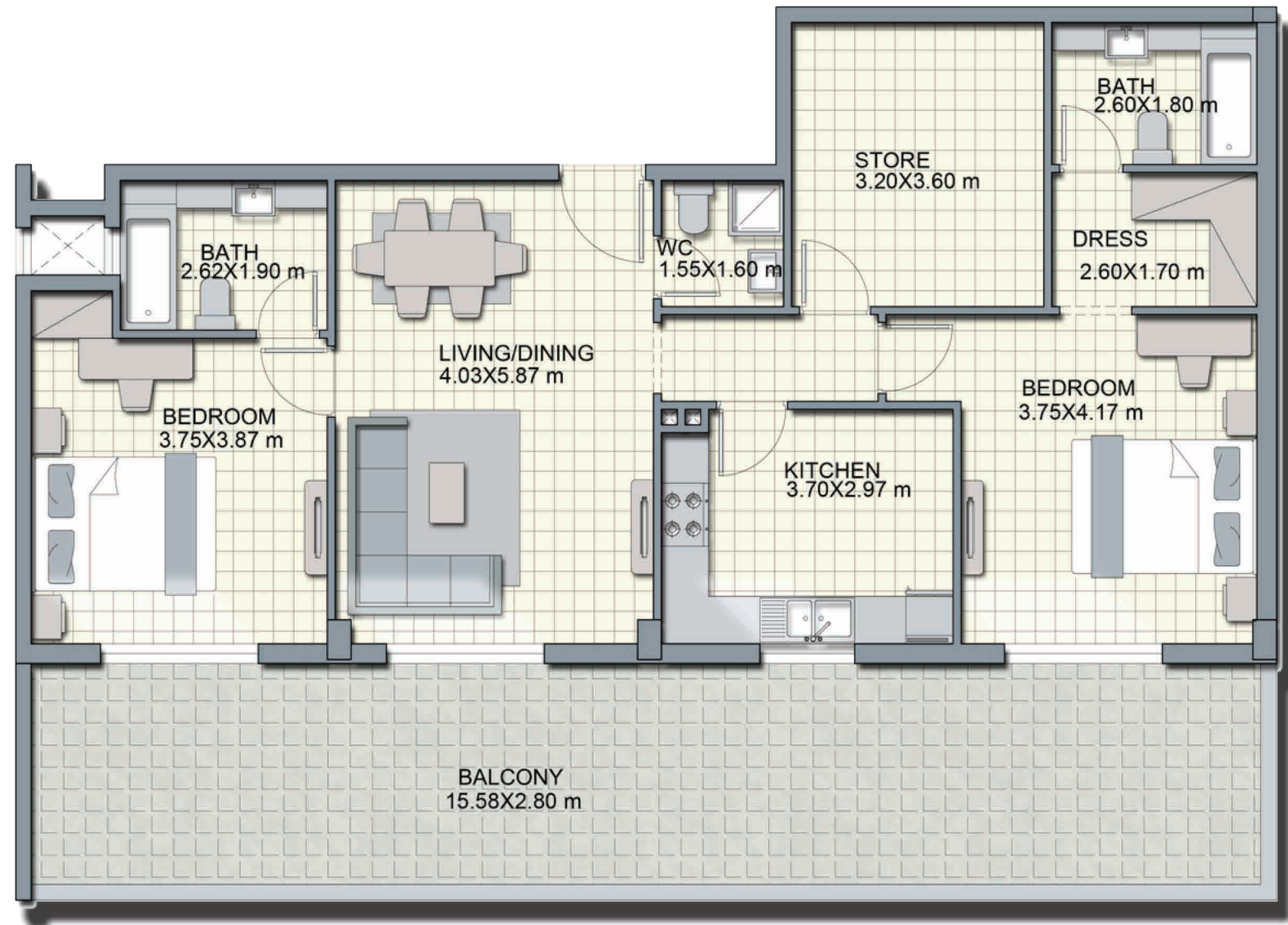
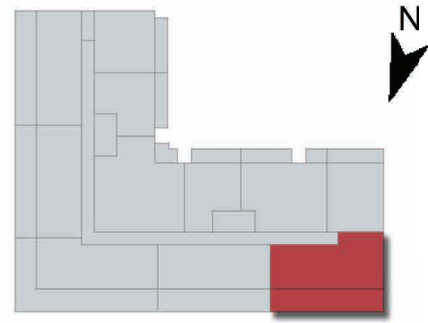


1 Bedroom + Store - A6
Total Area 967 - 973 Sq. Ft.

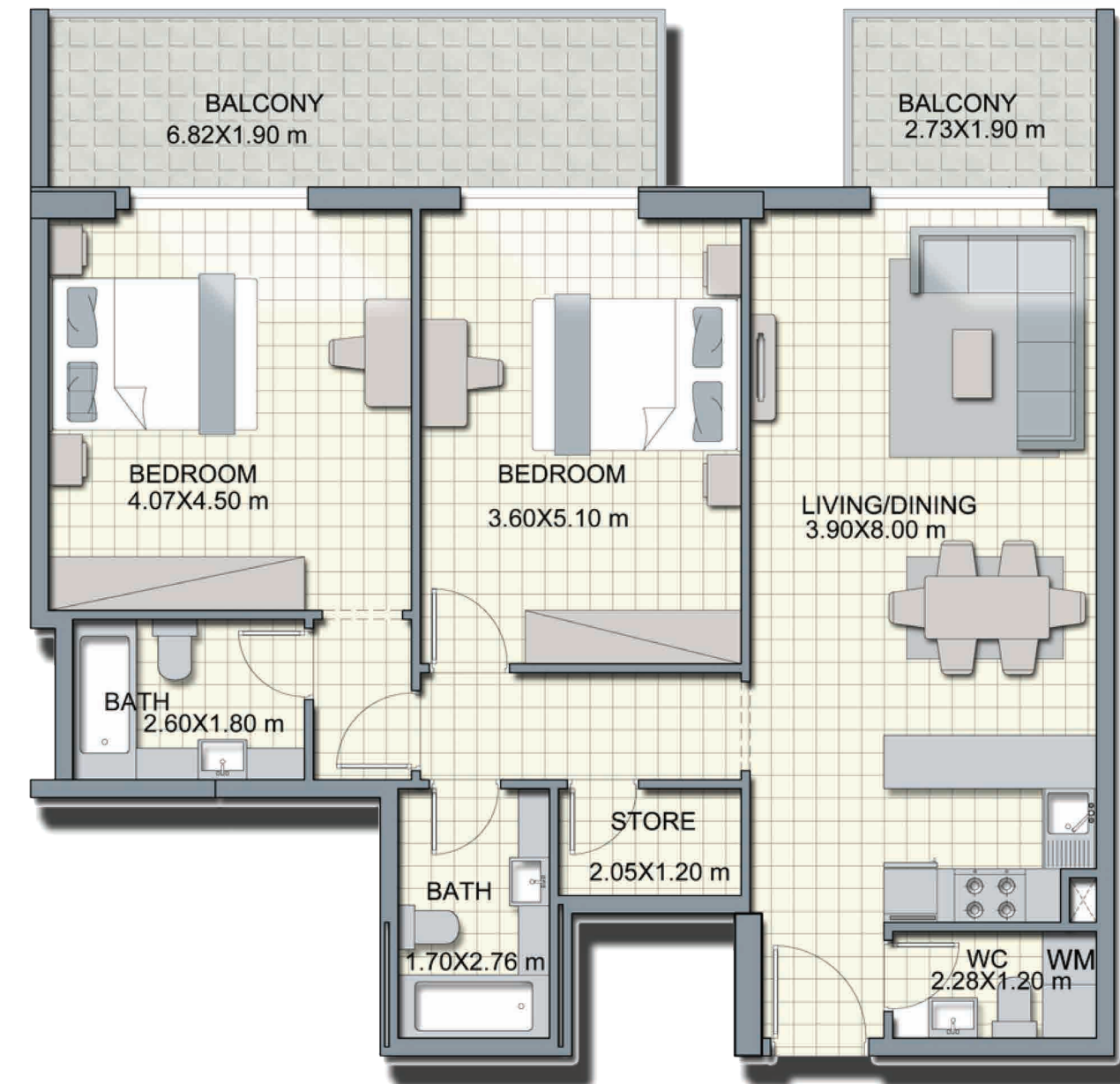
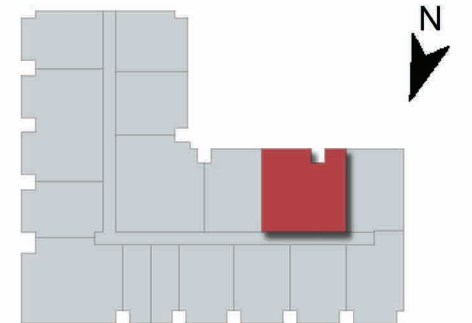


2 Bedroom - B1
Total Area 1531 - 2066 Sq. Ft.





2 Bedroom + Store - B3
Total Area 1655 - 2166 Sq. Ft.



2 Bedroom + Store - B5
Total Area 1280 Sq. Ft.



The community offers it's residents many parks, schools and even a mall.

Directions Jumeirah Village Circle

Jumeirah Village Circle has a central location. Easy access to major roads, nearby community malls in Sports City and Motor City.

Some Landmarks distances

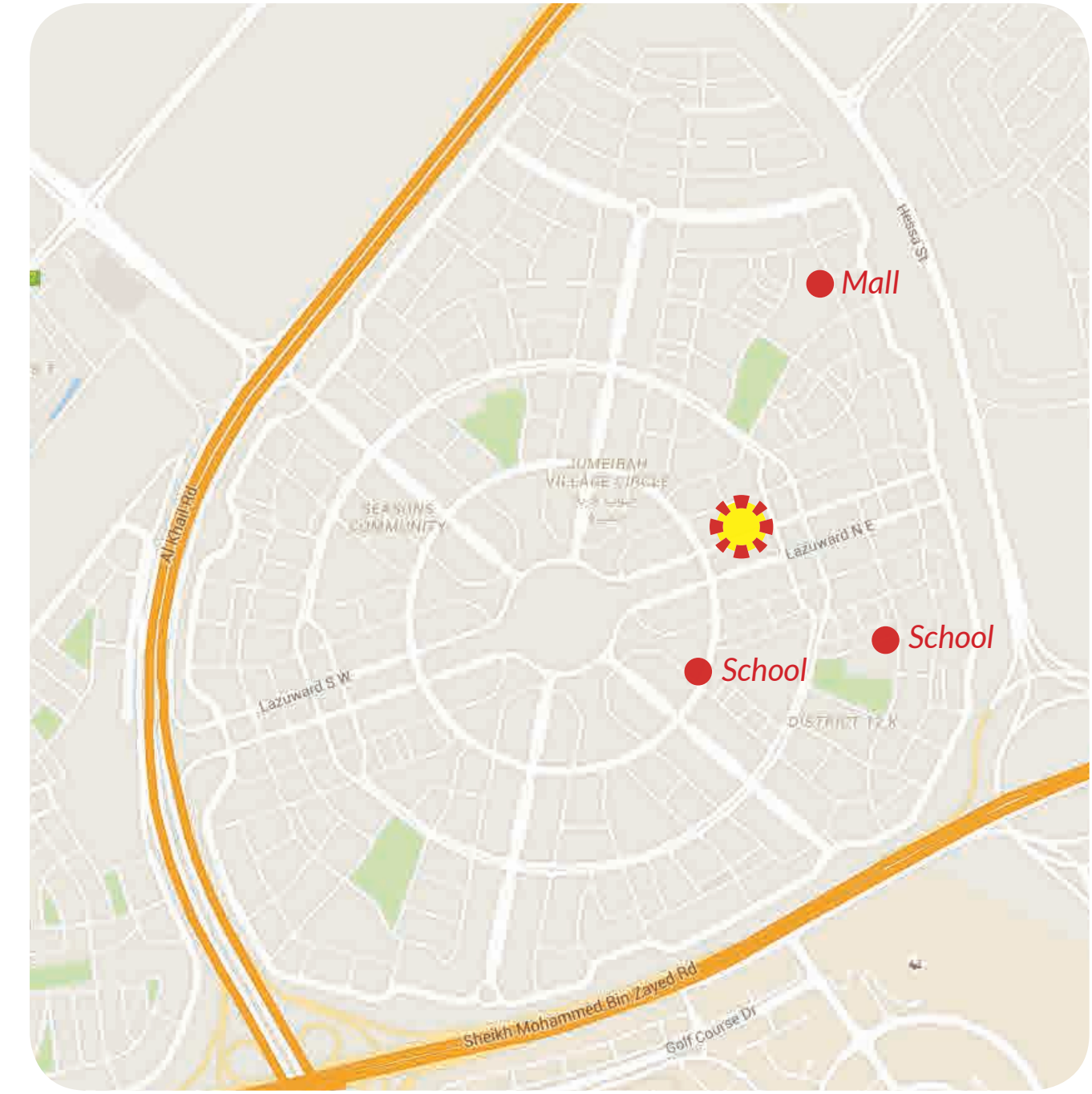
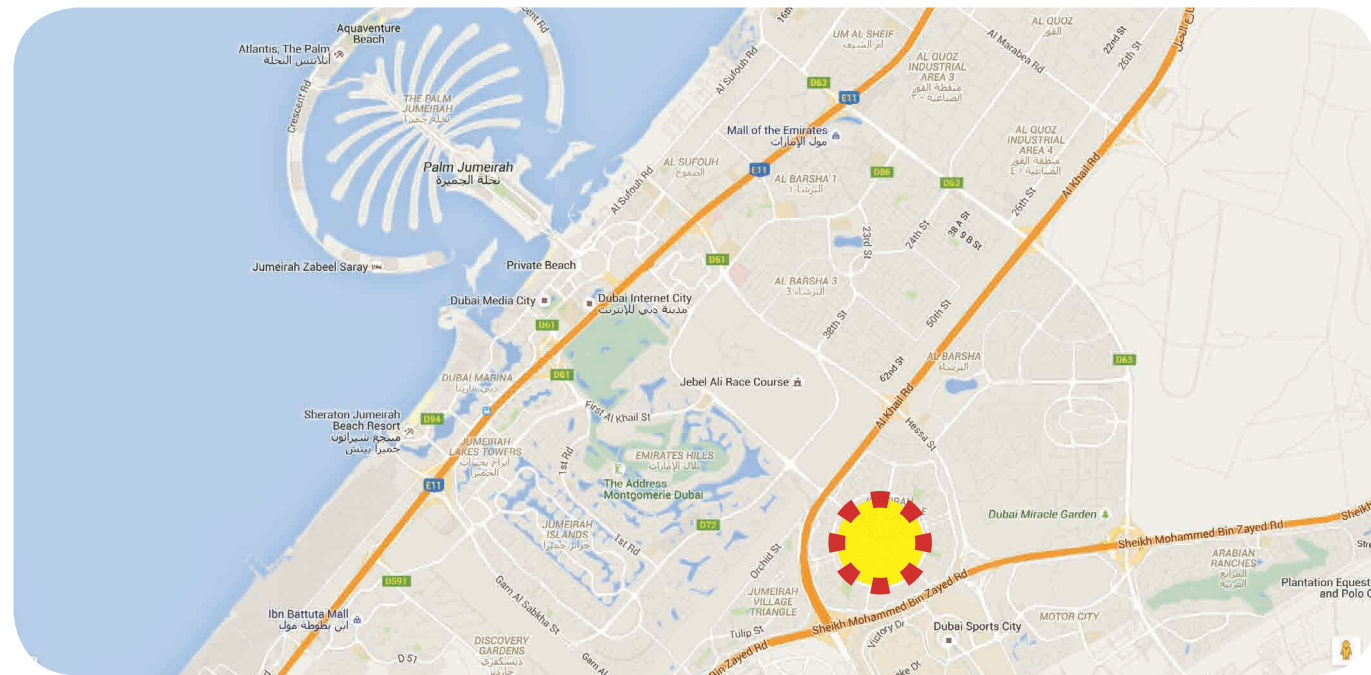
Dubai International Airport: 32 km (24 min)

Burj Khalifa: 23 km (20 min)

Dubai Marina: 13 km (15 min)

Palm Jumeirah: 12 km (12 min)

Location Alcove



PRESENTING



Grovy Real Estate Development LLC
Grovy India Limited

Grovy Real Estate Development LLC is a reputed Dubai based developer, and is associated closely within the real estate sector as investors and developers. Managed by two young entrepreneurs; Rohan Jalan and Abhishek Jalan, their in depth experience in finance, merged together with consistency and strategic implementation, ensures their drive for excellence, innovation and execution.

Grovy India Limited was formed in 1985 and is well known for its ambitious commitment within the New Delhi real estate development market. Their diversified real estate venture includes residential, commercial and retail sectors, with operations involving multiple aspects of real estate development including land identification, acquisition, apartment development building, land development, villa construction, project planning and execution. Grovy India Limited also plans to diversify into the building of high rise apartments, group housing, commercial, retail and hospitality spaces. Under the chairmanship of Chartered Accountant and Financial Consultant; P.C. Jalan, Grovy India Limited is poised to make great strides in the real estate development world.

OUR VISION

To be leaders in real estate industry by adopting new technologies and setting international standards. To follow the industry best practices and build a strong and never ending relationship with our customers and stakeholders.

OUR MISSION

To always follow the right approach and values and convey the same to our esteemed customers because they will always be at the core of our business model.



CONTACT US

**Move a step closer to your dream home,
contact us now!**

Project Developer:



P.O. Box 41604, Dubai - UAE

Telephone : +971 4 438 5005
Fax : +971 4 451 8243
Email : alcove@grovy.ae
Website : www.grovy.ae

Exclusive Sales Agents



Suite 1601, Boulevard Plaza Tower 1, Downtown
Dubai, UAE

Telephone : +971 4 388 2220
Fax : +971 4 388 2231
Email : alcove@aquaproperties.com
Website : www.aquaproperties.com/alcove



Disclaimer: All the dimensions are provided by our consultants. All material, dimensions, drawing features and amenities are approximate at the time of printing. Actual area may vary from the stated area from unit to unit. Drawing not to scale. The images used are only meant for depiction purpose and are not the actual site pictures.